

Data Path : Z:\pestpcbsrv\HPCHEM1\ECD_S\Data\PS111521\
 Data File : PS017416.D
 Signal(s) : Signal #1: ECD1A.ch Signal #2: ECD2B.ch
 Acq On : 15 Nov 2021 15:16
 Operator : DD\AJ
 Sample : M4654-04
 Misc :
 ALS Vial : 5 Sample Multiplier: 1

Instrument :
 ECD_S
 ClientSampleId :

Integration File signal 1: autoint1.e
 Integration File signal 2: autoint2.e
 Quant Time: Nov 16 00:31:52 2021
 Quant Method : Z:\pestpcbsrv\HPCHEM1\ECD_S\Method\PS101821.M
 Quant Title : 8080.M
 QLast Update : Tue Oct 19 01:21:46 2021
 Response via : Initial Calibration
 Integrator: ChemStation

Volume Inj. : 2 µl
 Signal #1 Phase : Rtx-CLPesticides Signal #2 Phase: Rtx-CLPesticides2
 Signal #1 Info : 30M x 0.32mm x0.5 Signal #2 Info : 30M x 0.32mm x 0.25µm

	Compound	RT#1	RT#2	Resp#1	Resp#2	ng/ml	ng/ml

System Monitoring Compounds							
4) S	2,4-DCAA	7.147	6.737	693.3E6	252.5E6	453.599	432.087
Target Compounds							
1) T	Dalapon	2.937f	0.000	21161993	0	9.746	N.D. #
2) T	3,5-DICHL...	6.311f	5.960	5633697	81103801	2.610	93.380 #
3) T	4-Nitroph...	6.972	6.391	13176350	5236467	15.108	16.245
5) T	DICAMBA	7.346	6.895	11137480	8136688	1.859	3.196 #
6) T	MCP P	7.501	6.931f	23530961	8353621	5.264	4.148
7) T	MCPA	7.631	7.190	25955597	28222744	4.207	9.533 #
8) T	DICHLORPROP	8.043	7.519	24803125	4831689	16.542	7.513 #
9) T	2,4-D	8.261	7.786	21219676	18216022	11.980	24.205 #
10) T	Pentachlo...	8.624f	0.000	79748658	0	3.844	N.D. #
11) T	2,4,5-TP ...	9.066f	8.629f	10916947	5045553	1.342	1.464
12) T	2,4,5-T	9.409	0.000	15745660	0	1.960	N.D. #
13) T	2,4-DB	9.986	0.000	27804841	0	18.483	N.D. #
14) T	DINOSEB	11.067	0.000	106.9E6	0	18.879	N.D. #
15) T	Picloram	10.938	10.786	54311587	10255201	5.085	2.678 #
16) T	DCPA	11.389	10.725	12466823	11490056	1.224	2.693 #

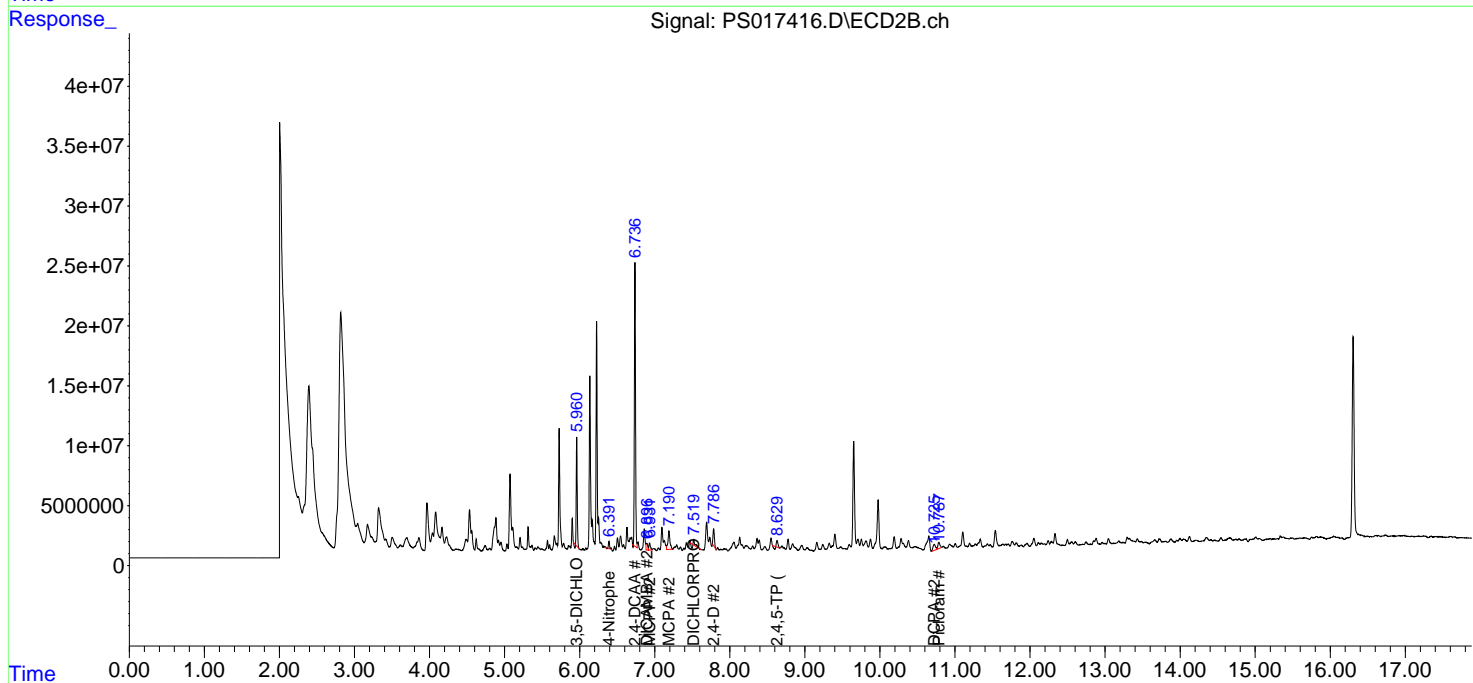
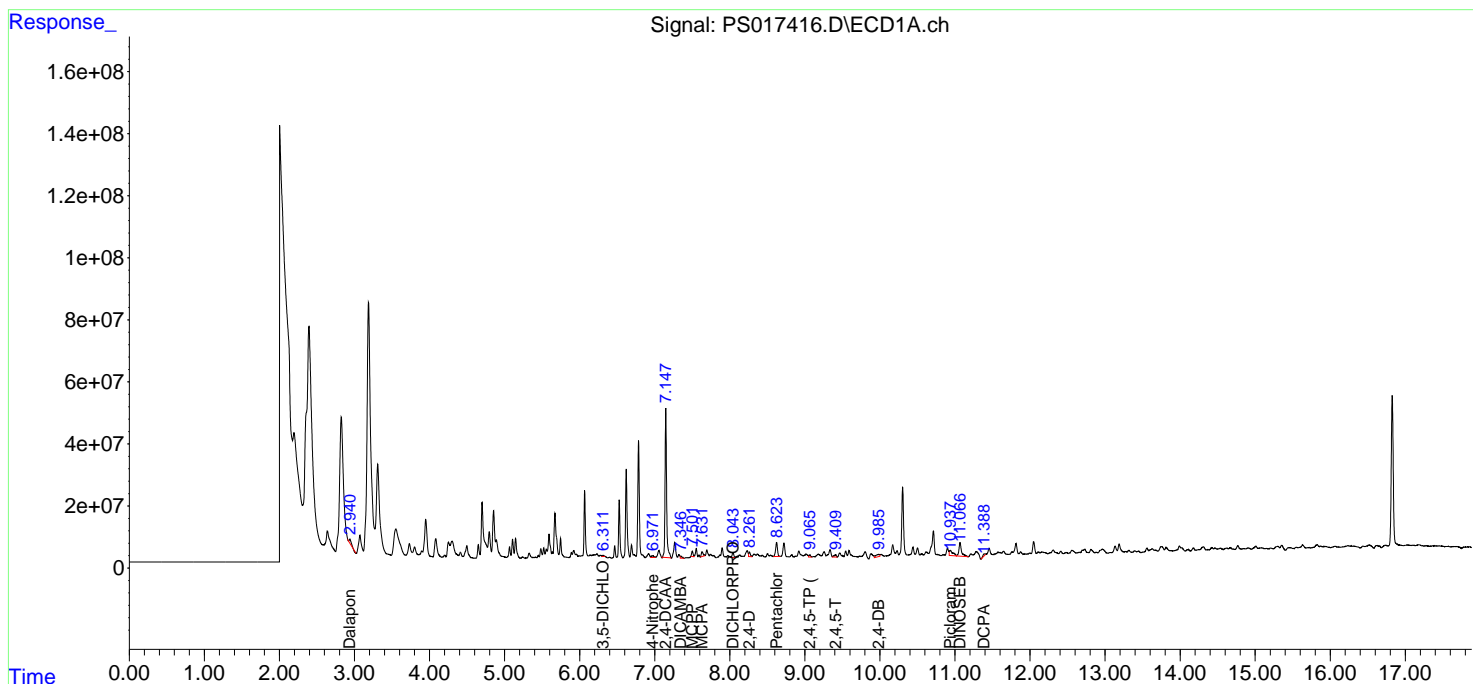
(f)=RT Delta > 1/2 Window (#)=Amounts differ by > 25% (m)=manual int.

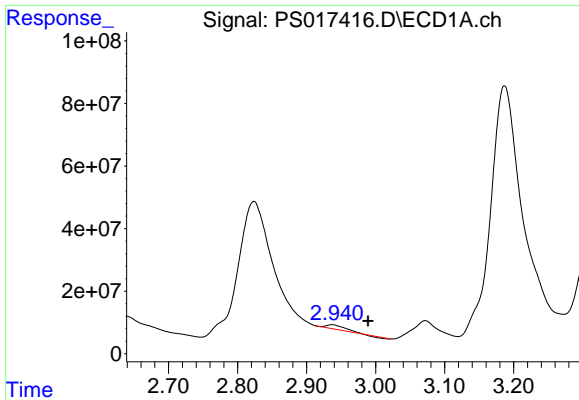
Data Path : Z:\pestpcbsrv\HPCHEM1\ECD_S\Data\PS111521\
 Data File : PS017416.D
 Signal(s) : Signal #1: ECD1A.ch Signal #2: ECD2B.ch
 Acq On : 15 Nov 2021 15:16
 Operator : DD\AJ
 Sample : M4654-04
 Misc :
 ALS Vial : 5 Sample Multiplier: 1

Instrument :
 ECD_S
 ClientSampleId :

Integration File signal 1: autoint1.e
 Integration File signal 2: autoint2.e
 Quant Time: Nov 16 00:31:52 2021
 Quant Method : Z:\pestpcbsrv\HPCHEM1\ECD_S\Method\PS101821.M
 Quant Title : 8080.M
 QLast Update : Tue Oct 19 01:21:46 2021
 Response via : Initial Calibration
 Integrator: ChemStation

Volume Inj. : 2 µl
 Signal #1 Phase : Rtx-CLPesticides Signal #2 Phase: Rtx-CLPesticides2
 Signal #1 Info : 30M x 0.32mm x 0.5 Signal #2 Info : 30M x 0.32mm x 0.25µm

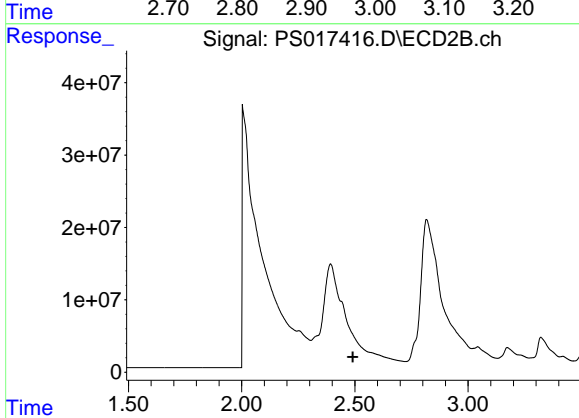




#1 Dalapon

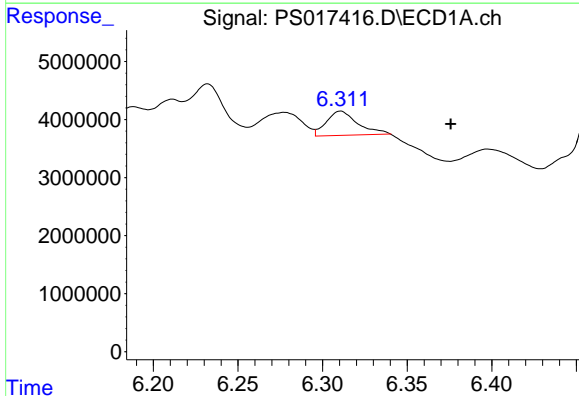
R.T.: 2.937 min
 Delta R.T.: -0.052 min
 Response: 21161993
 Conc: 9.75 ng/ml

Instrument :
 ECD_S
 ClientSampleId :



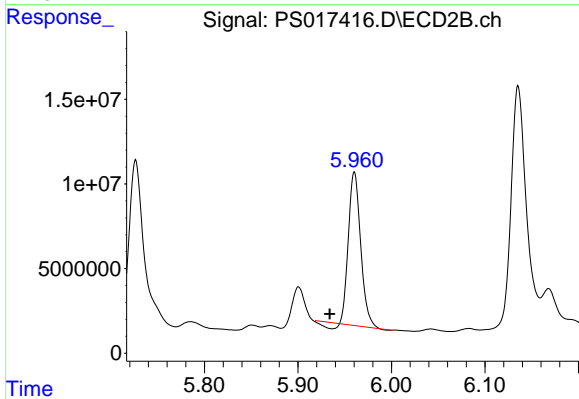
#1 Dalapon

R.T.: 0.000 min
 Exp R.T. : 2.491 min
 Response: 0
 Conc: N.D.



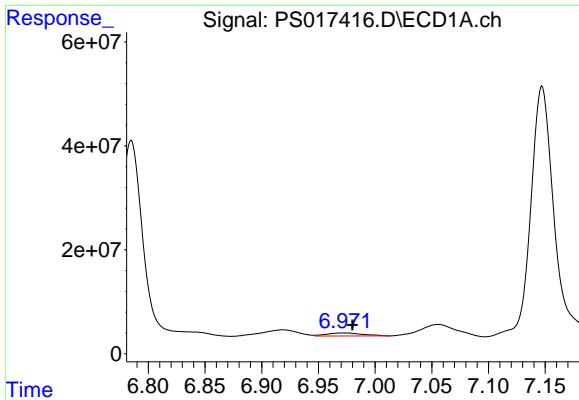
#2 3,5-DICHLOROBENZOIC ACID

R.T.: 6.311 min
 Delta R.T.: -0.065 min
 Response: 5633697
 Conc: 2.61 ng/ml



#2 3,5-DICHLOROBENZOIC ACID

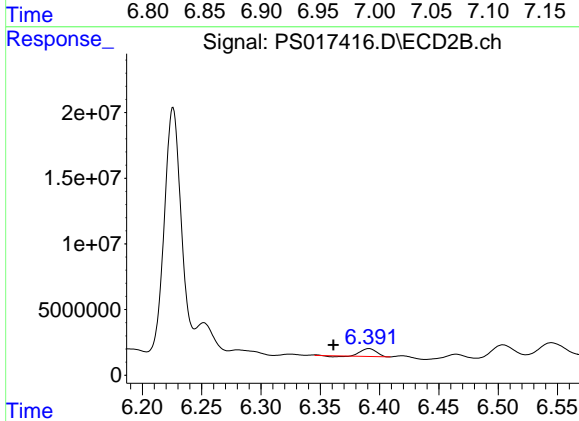
R.T.: 5.960 min
 Delta R.T.: 0.026 min
 Response: 81103801
 Conc: 93.38 ng/ml



#3 4-Nitrophenol

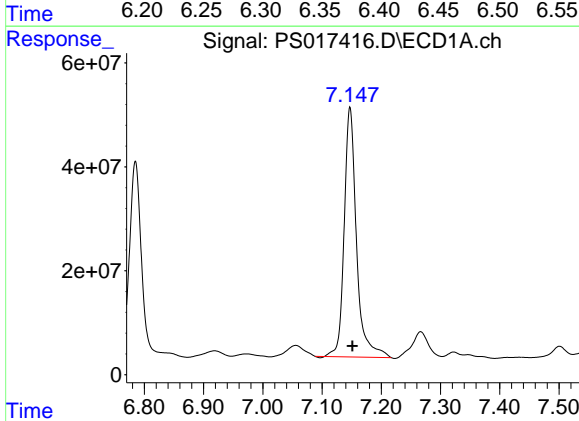
R.T.: 6.972 min
 Delta R.T.: -0.008 min
 Response: 13176350
 Conc: 15.11 ng/ml

Instrument :
 ECD_S
 ClientSampleId :



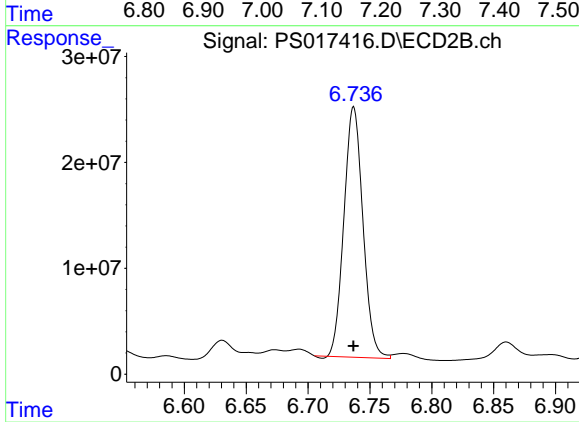
#3 4-Nitrophenol

R.T.: 6.391 min
 Delta R.T.: 0.030 min
 Response: 5236467
 Conc: 16.24 ng/ml



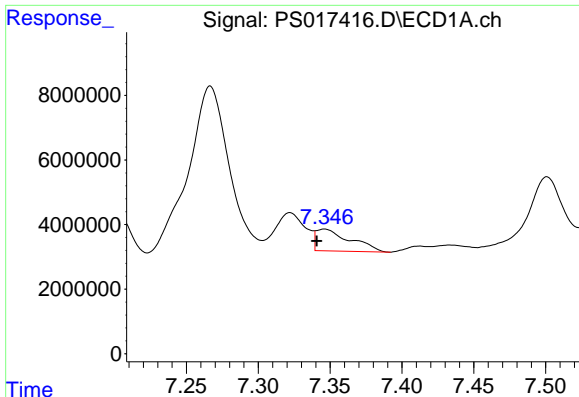
#4 2,4-DCAA

R.T.: 7.147 min
 Delta R.T.: -0.004 min
 Response: 693308533
 Conc: 453.60 ng/ml



#4 2,4-DCAA

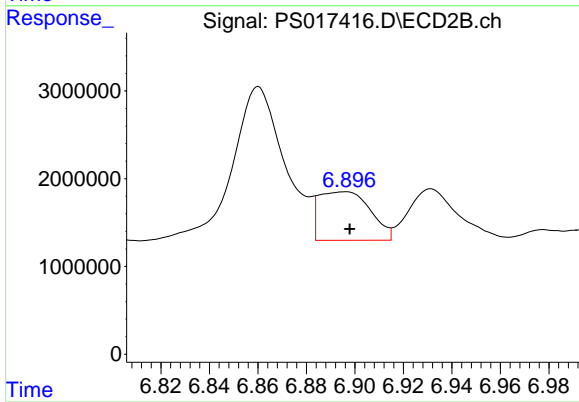
R.T.: 6.737 min
 Delta R.T.: 0.000 min
 Response: 252529582
 Conc: 432.09 ng/ml



#5 DICAMBA

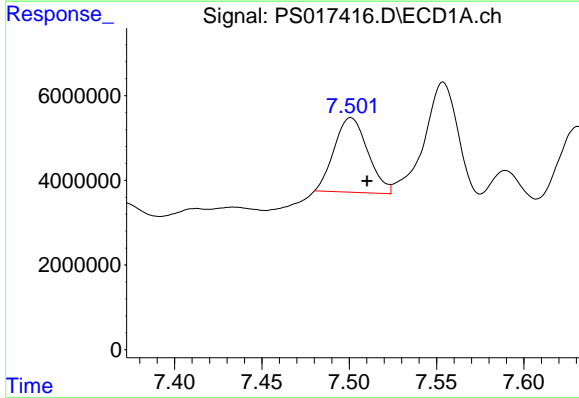
R.T.: 7.346 min
 Delta R.T.: 0.005 min
 Response: 11137480
 Conc: 1.86 ng/ml

Instrument :
 ECD_S
 ClientSampleId :



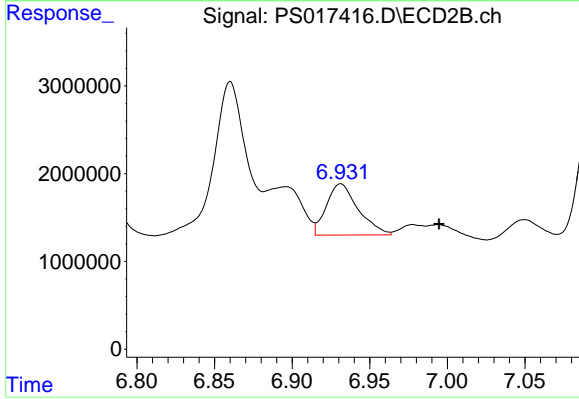
#5 DICAMBA

R.T.: 6.895 min
 Delta R.T.: -0.003 min
 Response: 8136688
 Conc: 3.20 ng/ml



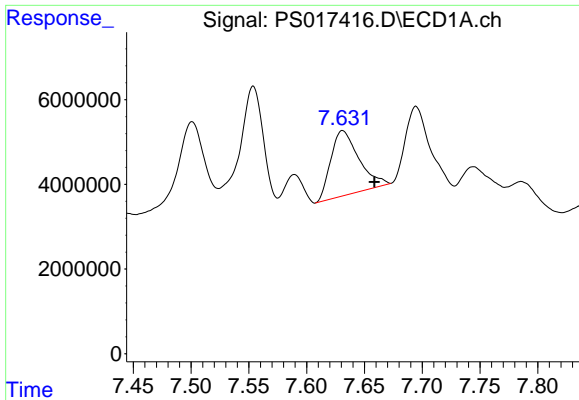
#6 MCPP

R.T.: 7.501 min
 Delta R.T.: -0.009 min
 Response: 23530961
 Conc: 5.26 ug/ml



#6 MCPP

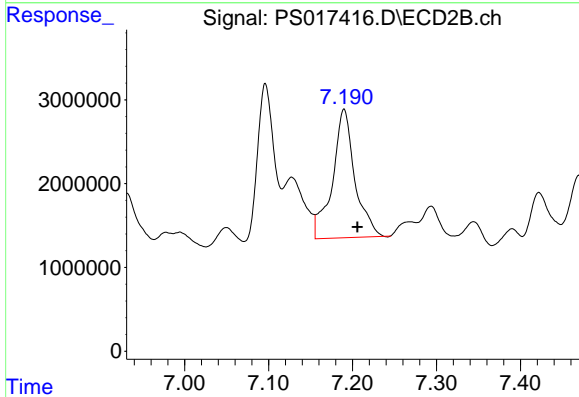
R.T.: 6.931 min
 Delta R.T.: -0.063 min
 Response: 8353621
 Conc: 4.15 ug/ml



#7 MCPA

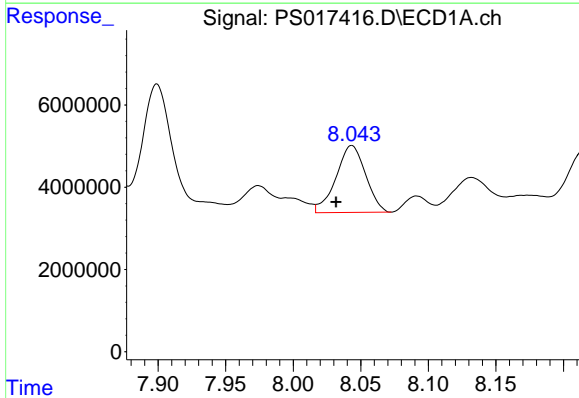
R.T.: 7.631 min
 Delta R.T.: -0.027 min
 Response: 25955597
 Conc: 4.21 ug/ml

Instrument :
 ECD_S
 ClientSampleId :



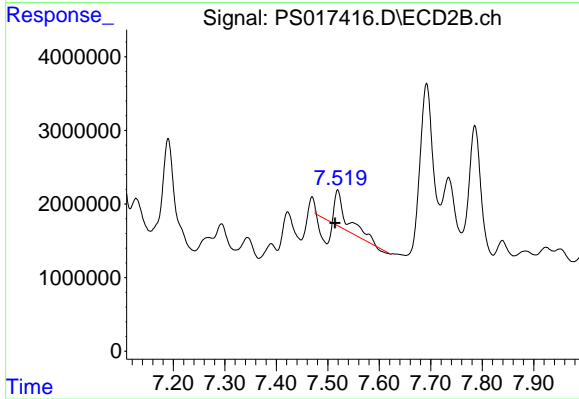
#7 MCPA

R.T.: 7.190 min
 Delta R.T.: -0.016 min
 Response: 28222744
 Conc: 9.53 ug/ml



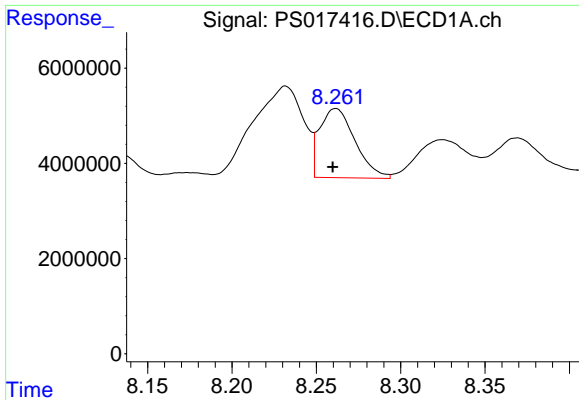
#8 DICHLORPROP

R.T.: 8.043 min
 Delta R.T.: 0.012 min
 Response: 24803125
 Conc: 16.54 ng/ml



#8 DICHLORPROP

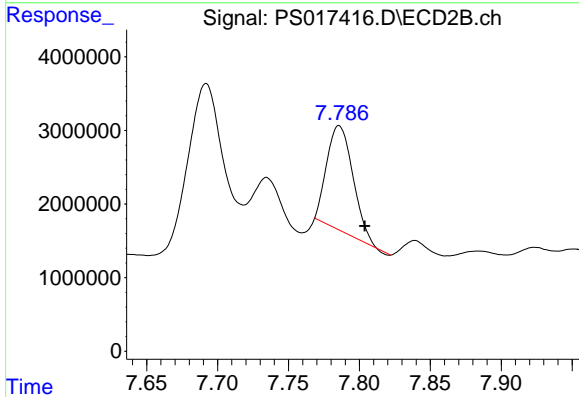
R.T.: 7.519 min
 Delta R.T.: 0.005 min
 Response: 4831689
 Conc: 7.51 ng/ml



#9 2,4-D

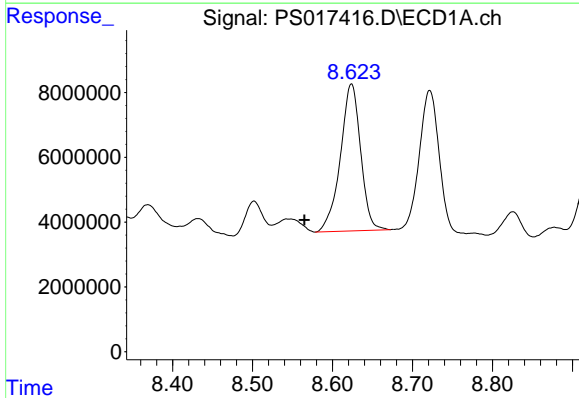
R.T.: 8.261 min
 Delta R.T.: 0.002 min
 Response: 21219676
 Conc: 11.98 ng/ml

Instrument :
 ECD_S
 ClientSampleId :



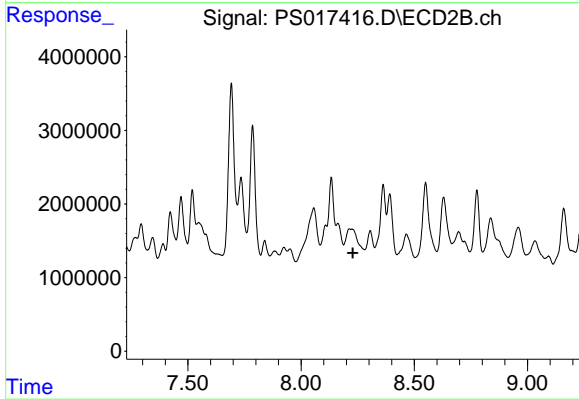
#9 2,4-D

R.T.: 7.786 min
 Delta R.T.: -0.018 min
 Response: 18216022
 Conc: 24.20 ng/ml



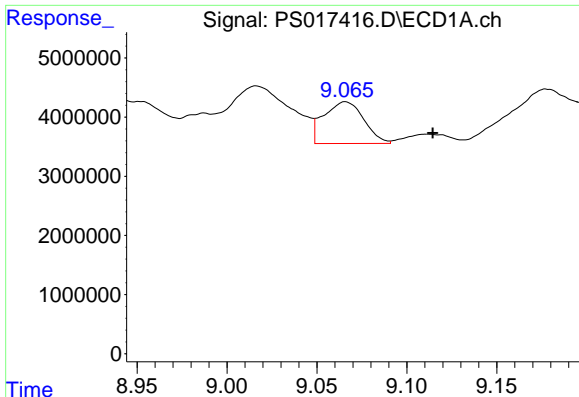
#10 Pentachlorophenol

R.T.: 8.624 min
 Delta R.T.: 0.059 min
 Response: 79748658
 Conc: 3.84 ng/ml



#10 Pentachlorophenol

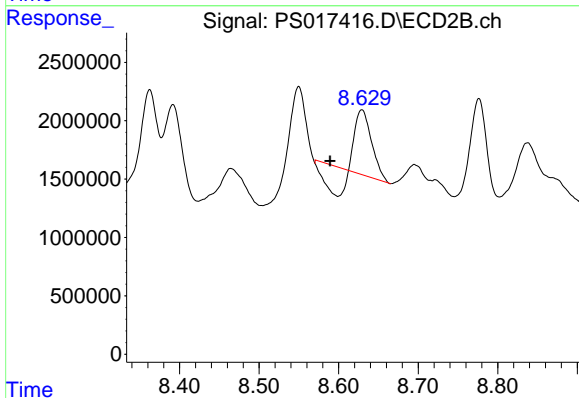
R.T.: 0.000 min
 Exp R.T. : 8.229 min
 Response: 0
 Conc: N.D.



#11 2,4,5-TP (SILVEX)

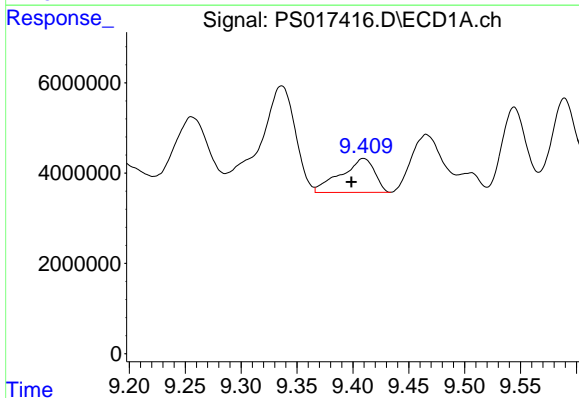
R.T.: 9.066 min
 Delta R.T.: -0.049 min
 Response: 10916947
 Conc: 1.34 ng/ml

Instrument :
 ECD_S
 ClientSampleId :



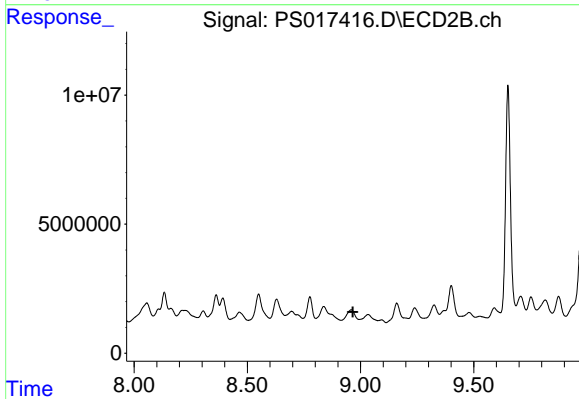
#11 2,4,5-TP (SILVEX)

R.T.: 8.629 min
 Delta R.T.: 0.040 min
 Response: 5045553
 Conc: 1.46 ng/ml



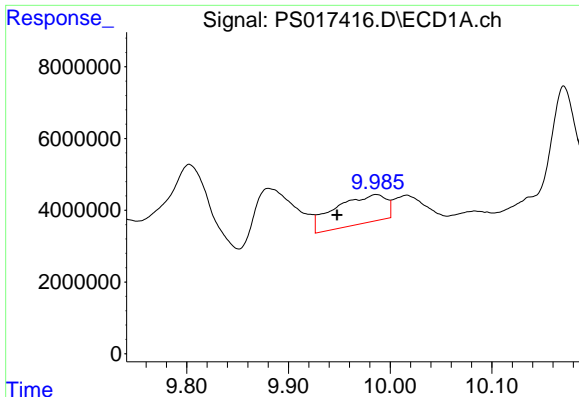
#12 2,4,5-T

R.T.: 9.409 min
 Delta R.T.: 0.011 min
 Response: 15745660
 Conc: 1.96 ng/ml



#12 2,4,5-T

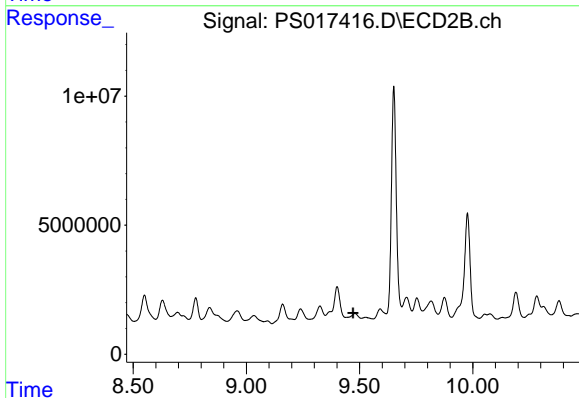
R.T.: 0.000 min
 Exp R.T. : 8.966 min
 Response: 0
 Conc: N.D.



#13 2,4-DB

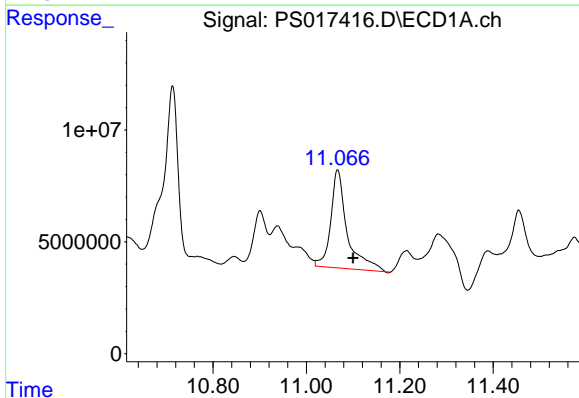
R.T.: 9.986 min
 Delta R.T.: 0.038 min
 Response: 27804841
 Conc: 18.48 ng/ml

Instrument :
 ECD_S
 ClientSampleId :



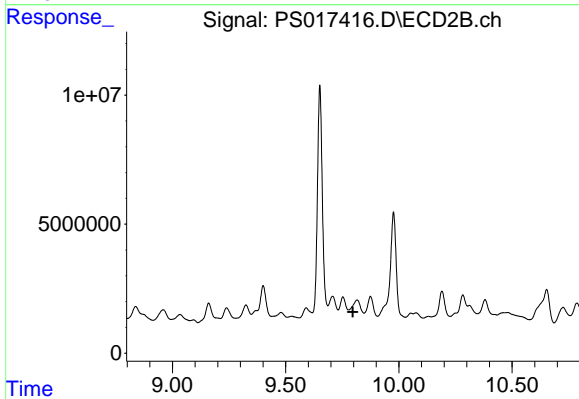
#13 2,4-DB

R.T.: 0.000 min
 Exp R.T. : 9.471 min
 Response: 0
 Conc: N.D.



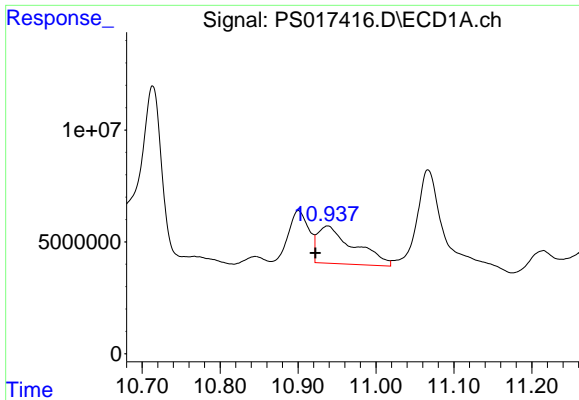
#14 DINOSEB

R.T.: 11.067 min
 Delta R.T.: -0.033 min
 Response: 106948014
 Conc: 18.88 ng/ml



#14 DINOSEB

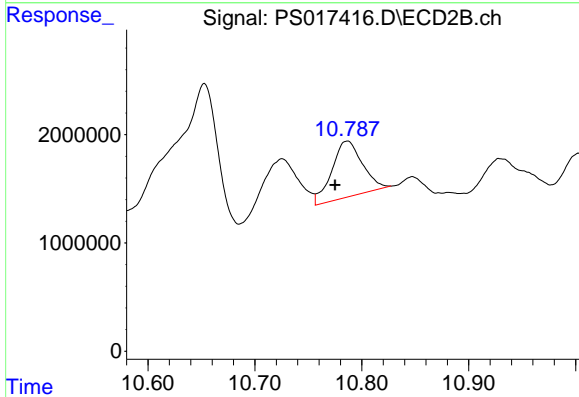
R.T.: 0.000 min
 Exp R.T. : 9.797 min
 Response: 0
 Conc: N.D.



#15 Picloram

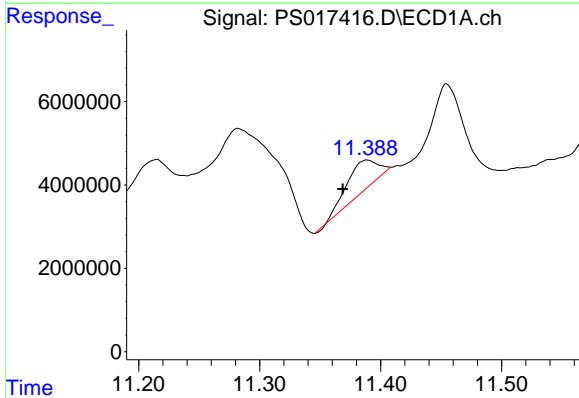
R.T.: 10.938 min
 Delta R.T.: 0.016 min
 Response: 54311587
 Conc: 5.08 ng/ml

Instrument :
 ECD_S
 ClientSampleId :



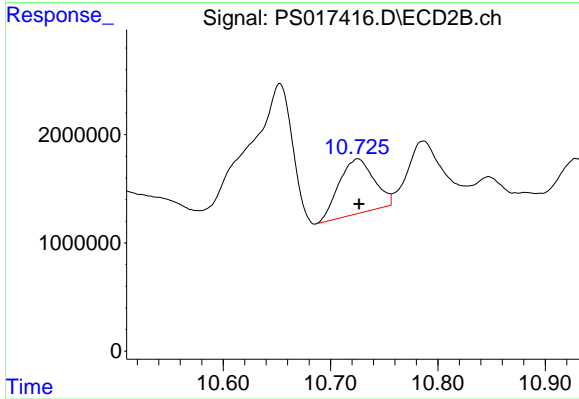
#15 Picloram

R.T.: 10.786 min
 Delta R.T.: 0.011 min
 Response: 10255201
 Conc: 2.68 ng/ml



#16 DCPA

R.T.: 11.389 min
 Delta R.T.: 0.020 min
 Response: 12466823
 Conc: 1.22 ng/ml



#16 DCPA

R.T.: 10.725 min
 Delta R.T.: -0.001 min
 Response: 11490056
 Conc: 2.69 ng/ml