

Data Path : Z:\pestpcbsrv\HPCHEM1\ECD_S\Data\PS111721\
 Data File : PS017438.D
 Signal(s) : Signal #1: ECD1A.ch Signal #2: ECD2B.ch
 Acq On : 17 Nov 2021 16:10
 Operator : AJ\MA
 Sample : PB140835BL
 Misc :
 ALS Vial : 14 Sample Multiplier: 1

Instrument :
 ECD_S
 ClientSampleId :

Integration File signal 1: autoint1.e
 Integration File signal 2: autoint2.e
 Quant Time: Nov 18 00:09:31 2021
 Quant Method : Z:\pestpcbsrv\HPCHEM1\ECD_S\Method\PS101821.M
 Quant Title : 8080.M
 QLast Update : Tue Oct 19 01:21:46 2021
 Response via : Initial Calibration
 Integrator: ChemStation

Volume Inj. : 2 µl
 Signal #1 Phase : Rtx-CLPesticides Signal #2 Phase: Rtx-CLPesticides2
 Signal #1 Info : 30M x 0.32mm x0.5 Signal #2 Info : 30M x 0.32mm x 0.25µm

Compound	RT#1	RT#2	Resp#1	Resp#2	ng/ml	ng/ml
System Monitoring Compounds						
4) S 2,4-DCAA	7.148	6.737	774.0E6	326.8E6	506.410	559.181
Target Compounds						
1) T Dalapon	2.941f	2.447f	53344204	57728129	24.567	89.218 #
2) T 3,5-DICHL...	6.311f	5.960	5754191	51505014	2.666	59.301 #
3) T 4-Nitroph...	6.923f	0.000	18606390	0	21.334	N.D. #
5) T DICAMBA	7.322	6.861	15658457	21870273	2.614	8.590 #
6) T MCPP	7.501	0.000	17402566	0	3.893	N.D. #
7) T MCPA	7.643	7.189	28370895	23277449	4.599	7.863 #
8) T DICHLORPROP	0.000	7.546	0	9125834	N.D.	14.191
9) T 2,4-D	8.213f	7.786	18373428	12264692	10.373	16.297 #
10) T Pentachlo...	8.623f	0.000	57788976	0	2.785	N.D. #
11) T 2,4,5-TP ...	9.175f	0.000	11524755	0	1.417	N.D. #
12) T 2,4,5-T	9.411	0.000	7806585	0	<MDL	N.D. #
13) T 2,4-DB	9.911	0.000	12676792	0	8.427	N.D. #
14) T DINOSEB	11.067	0.000	68084070	0	12.019	N.D. #
15) T Picloram	10.904	10.793	38092605	10183519	3.566	2.659 #
16) T DCPA	0.000	10.793f	0	10183519	N.D.	2.386

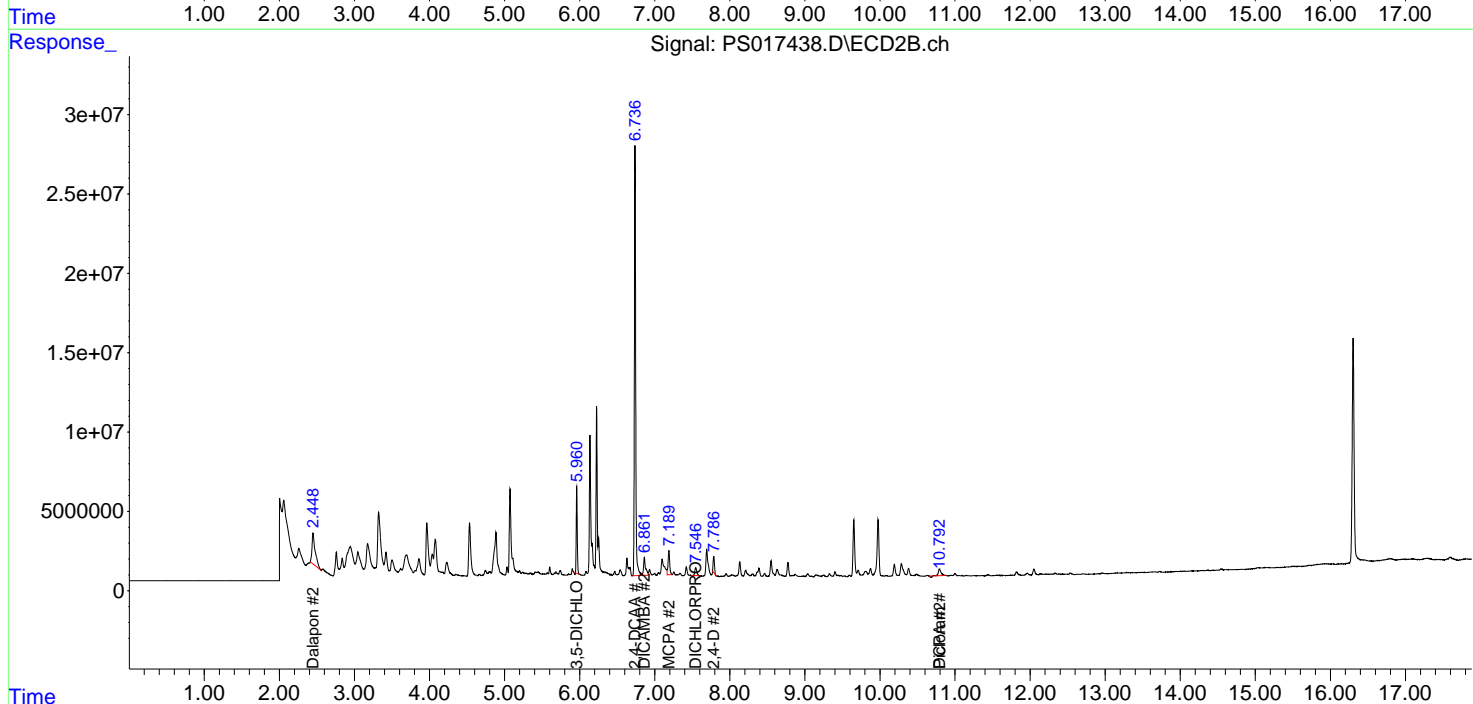
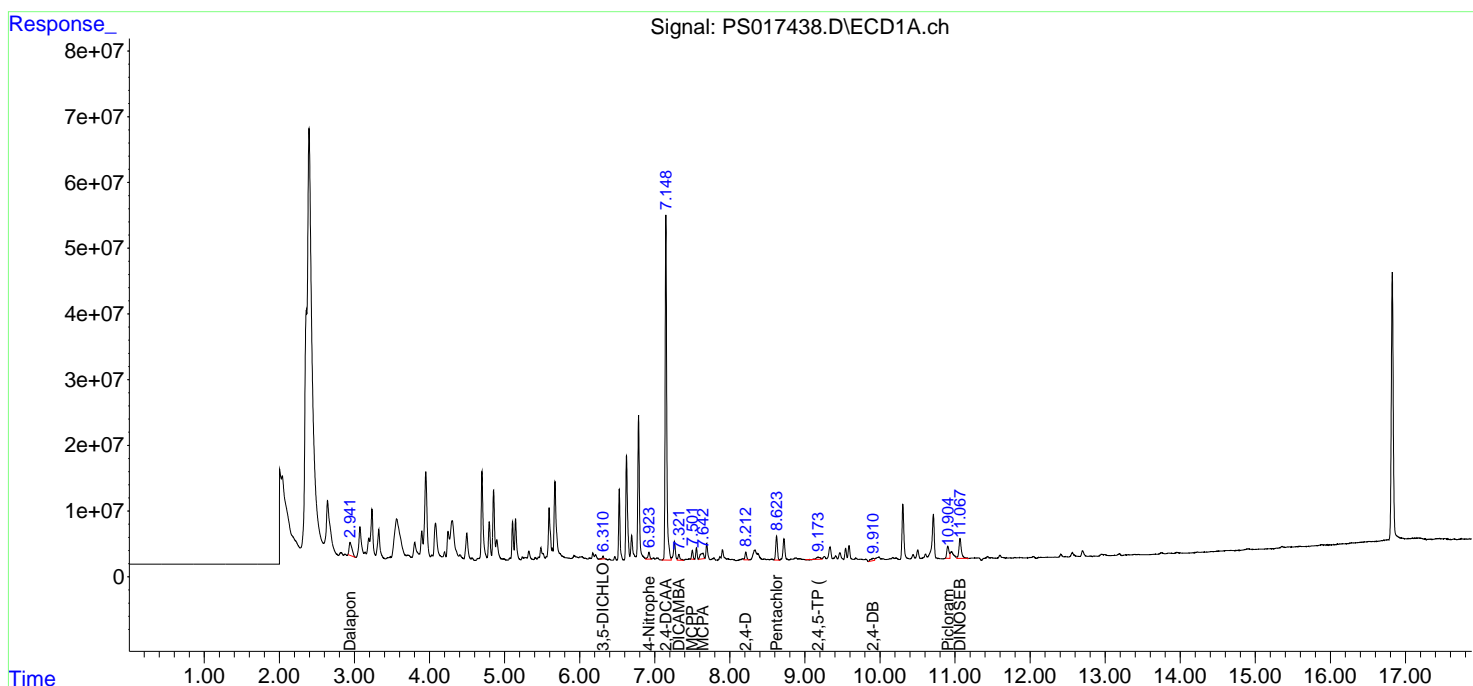
(f)=RT Delta > 1/2 Window (#)=Amounts differ by > 25% (m)=manual int.

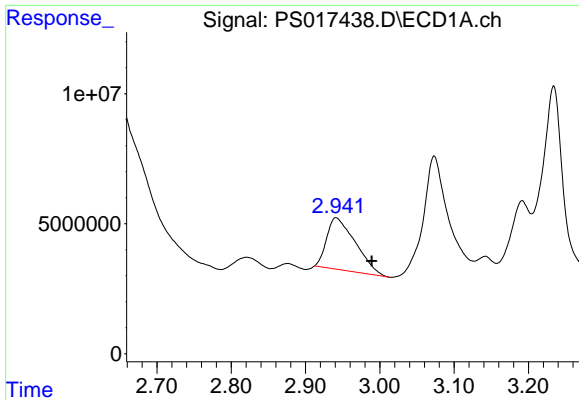
Data Path : Z:\pestpcbsrv\HPCHEM1\ECD_S\Data\PS111721\
 Data File : PS017438.D
 Signal(s) : Signal #1: ECD1A.ch Signal #2: ECD2B.ch
 Acq On : 17 Nov 2021 16:10
 Operator : AJ\MA
 Sample : PB140835BL
 Misc :
 ALS Vial : 14 Sample Multiplier: 1

Instrument :
 ECD_S
 ClientSampleId :

Integration File signal 1: autoint1.e
 Integration File signal 2: autoint2.e
 Quant Time: Nov 18 00:09:31 2021
 Quant Method : Z:\pestpcbsrv\HPCHEM1\ECD_S\Method\PS101821.M
 Quant Title : 8080.M
 QLast Update : Tue Oct 19 01:21:46 2021
 Response via : Initial Calibration
 Integrator: ChemStation

Volume Inj. : 2 µl
 Signal #1 Phase : Rtx-CLPesticides Signal #2 Phase: Rtx-CLPesticides2
 Signal #1 Info : 30M x 0.32mm x0.5 Signal #2 Info : 30M x 0.32mm x 0.25µm

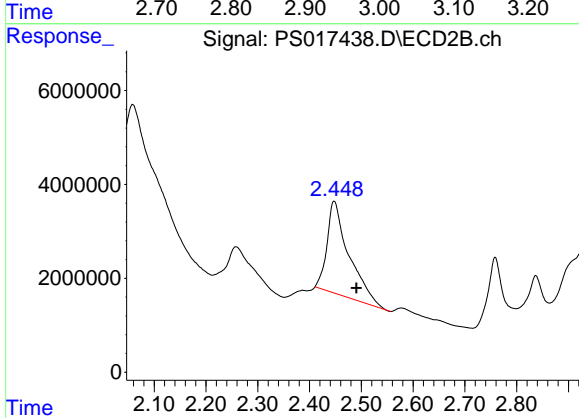




#1 Dalapon

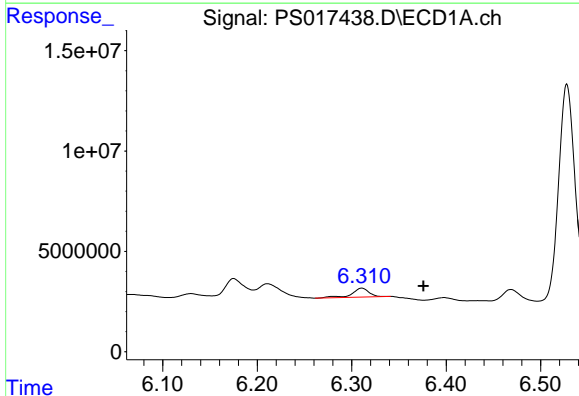
R.T.: 2.941 min
 Delta R.T.: -0.048 min
 Response: 53344204
 Conc: 24.57 ng/ml

Instrument :
 ECD_S
 ClientSampleId :



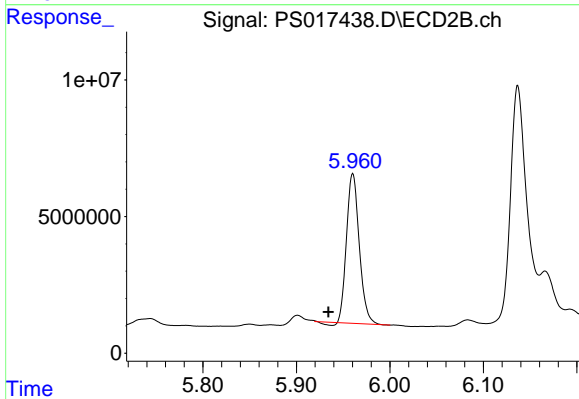
#1 Dalapon

R.T.: 2.447 min
 Delta R.T.: -0.044 min
 Response: 57728129
 Conc: 89.22 ng/ml



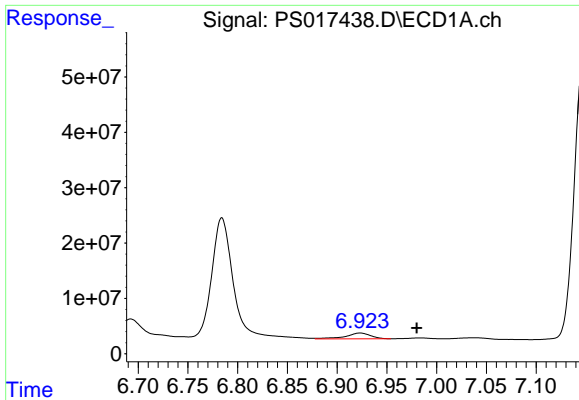
#2 3,5-DICHLOROBENZOIC ACID

R.T.: 6.311 min
 Delta R.T.: -0.065 min
 Response: 5754191
 Conc: 2.67 ng/ml



#2 3,5-DICHLOROBENZOIC ACID

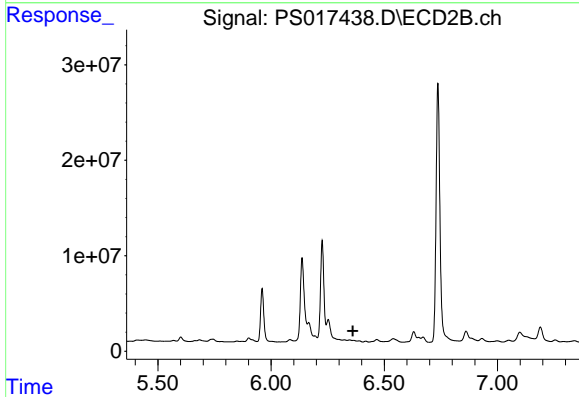
R.T.: 5.960 min
 Delta R.T.: 0.026 min
 Response: 51505014
 Conc: 59.30 ng/ml



#3 4-Nitrophenol

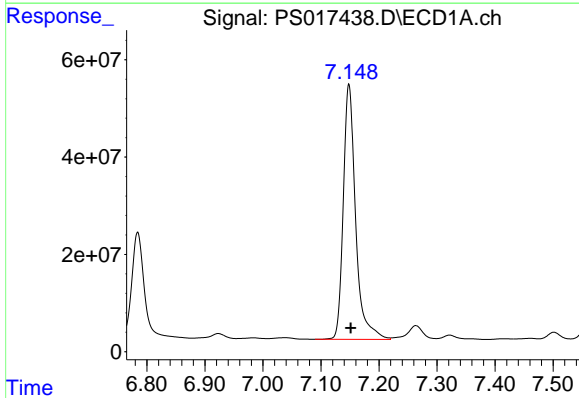
R.T.: 6.923 min
 Delta R.T.: -0.057 min
 Response: 18606390
 Conc: 21.33 ng/ml

Instrument :
 ECD_S
 ClientSampleId :



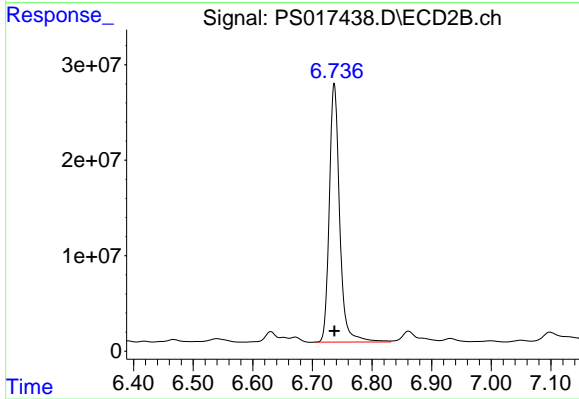
#3 4-Nitrophenol

R.T.: 0.000 min
 Exp R.T. : 6.361 min
 Response: 0
 Conc: N.D.



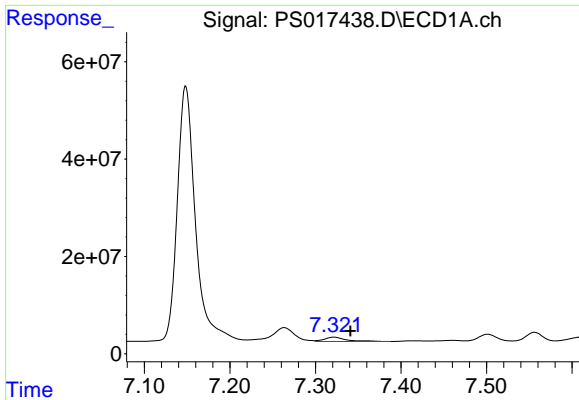
#4 2,4-DCAA

R.T.: 7.148 min
 Delta R.T.: -0.003 min
 Response: 774027888
 Conc: 506.41 ng/ml



#4 2,4-DCAA

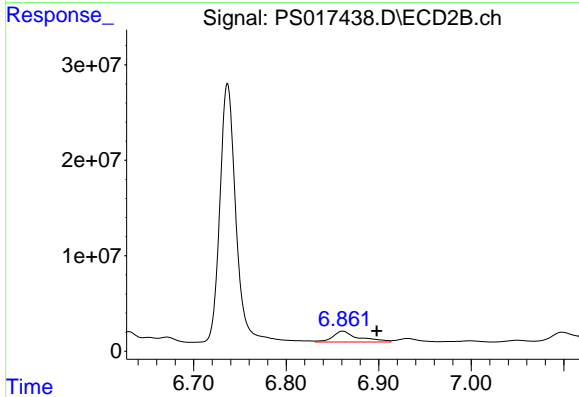
R.T.: 6.737 min
 Delta R.T.: 0.000 min
 Response: 326808635
 Conc: 559.18 ng/ml



#5 DICAMBA

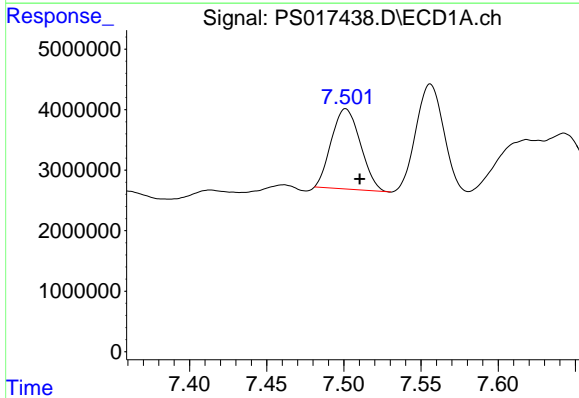
R.T.: 7.322 min
 Delta R.T.: -0.019 min
 Response: 15658457
 Conc: 2.61 ng/ml

Instrument :
 ECD_S
 ClientSampleId :



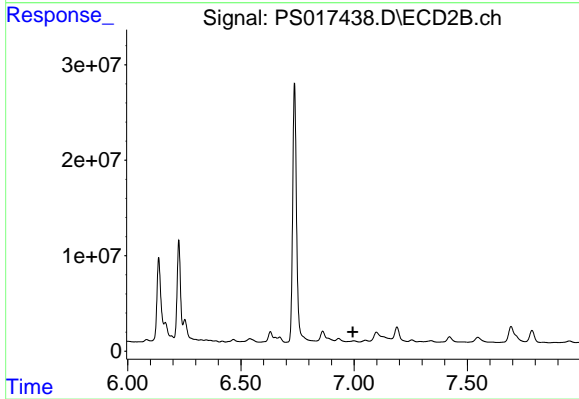
#5 DICAMBA

R.T.: 6.861 min
 Delta R.T.: -0.037 min
 Response: 21870273
 Conc: 8.59 ng/ml



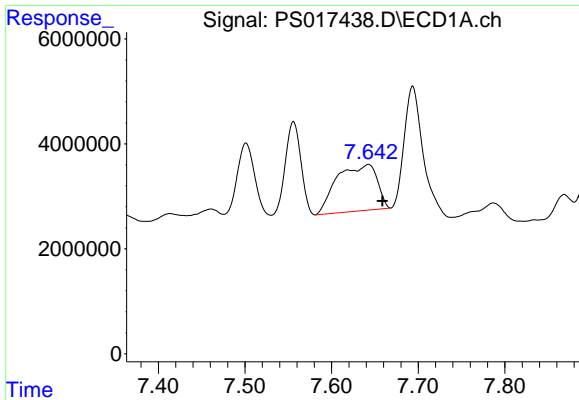
#6 MCPP

R.T.: 7.501 min
 Delta R.T.: -0.009 min
 Response: 17402566
 Conc: 3.89 ug/ml



#6 MCPP

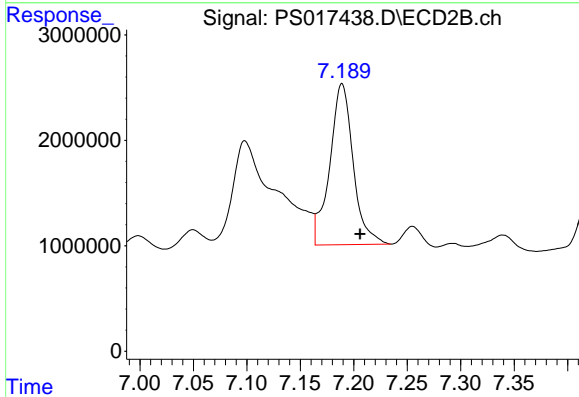
R.T.: 0.000 min
 Exp R.T. : 6.995 min
 Response: 0
 Conc: N.D.



#7 MCPA

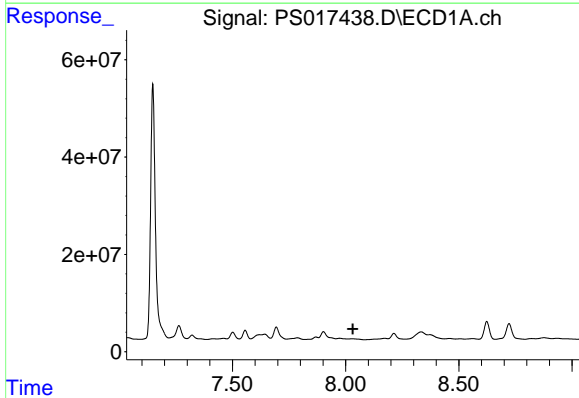
R.T.: 7.643 min
 Delta R.T.: -0.016 min
 Response: 28370895
 Conc: 4.60 ug/ml

Instrument :
 ECD_S
 ClientSampleId :



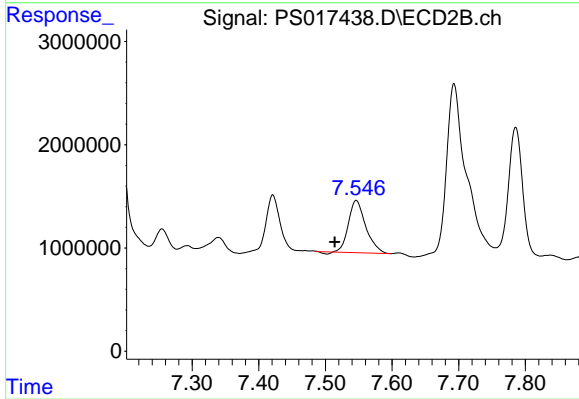
#7 MCPA

R.T.: 7.189 min
 Delta R.T.: -0.017 min
 Response: 23277449
 Conc: 7.86 ug/ml



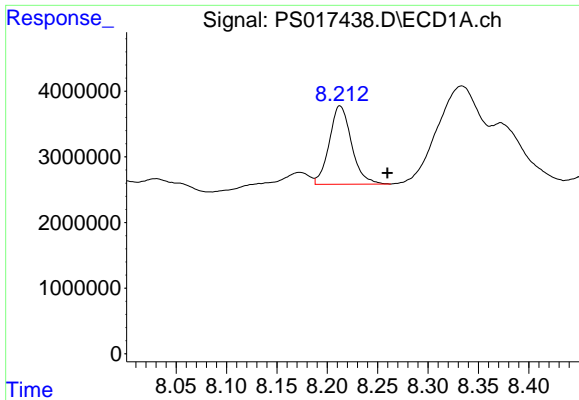
#8 DICHLORPROP

R.T.: 0.000 min
 Exp R.T. : 8.032 min
 Response: 0
 Conc: N.D.



#8 DICHLORPROP

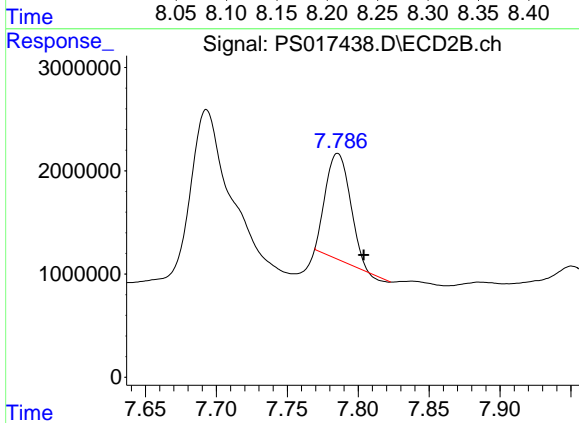
R.T.: 7.546 min
 Delta R.T.: 0.032 min
 Response: 9125834
 Conc: 14.19 ng/ml



#9 2,4-D

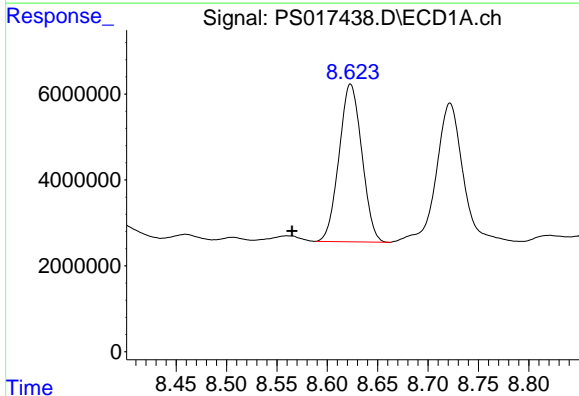
R.T.: 8.213 min
 Delta R.T.: -0.047 min
 Response: 18373428
 Conc: 10.37 ng/ml

Instrument :
 ECD_S
 ClientSampleId :



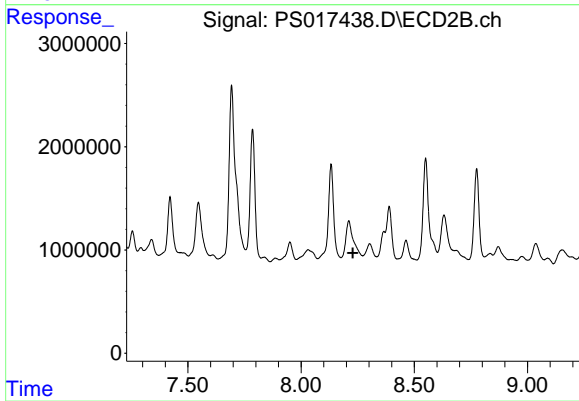
#9 2,4-D

R.T.: 7.786 min
 Delta R.T.: -0.018 min
 Response: 12264692
 Conc: 16.30 ng/ml



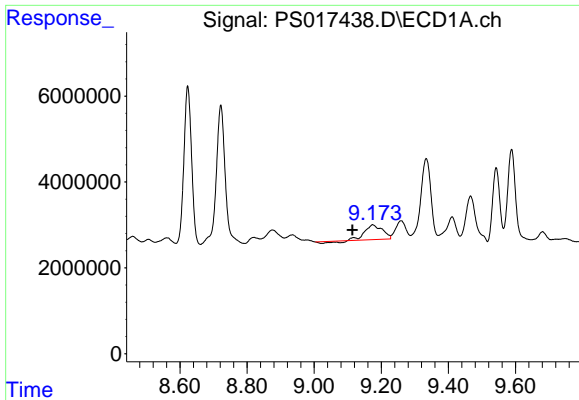
#10 Pentachlorophenol

R.T.: 8.623 min
 Delta R.T.: 0.058 min
 Response: 57788976
 Conc: 2.79 ng/ml



#10 Pentachlorophenol

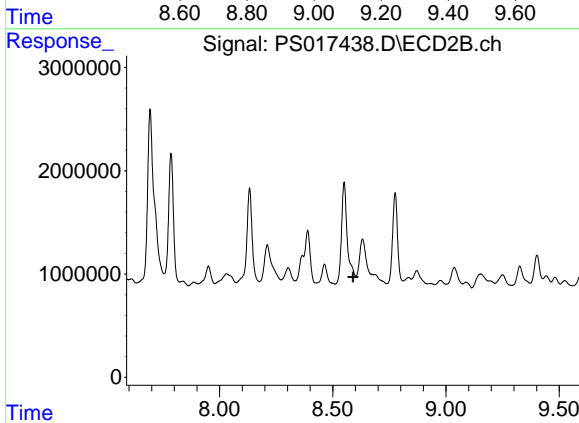
R.T.: 0.000 min
 Exp R.T. : 8.229 min
 Response: 0
 Conc: N.D.



#11 2,4,5-TP (SILVEX)

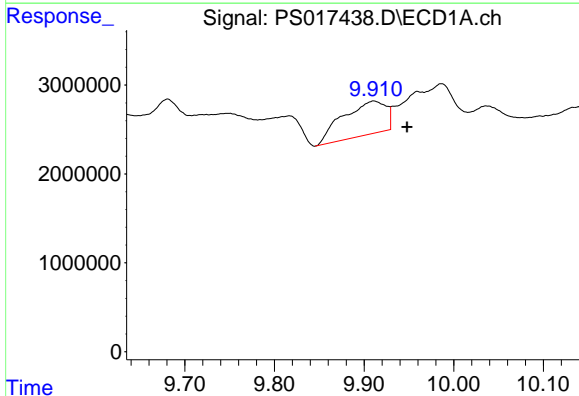
R.T.: 9.175 min
 Delta R.T.: 0.060 min
 Response: 11524755
 Conc: 1.42 ng/ml

Instrument :
 ECD_S
 ClientSampleId :



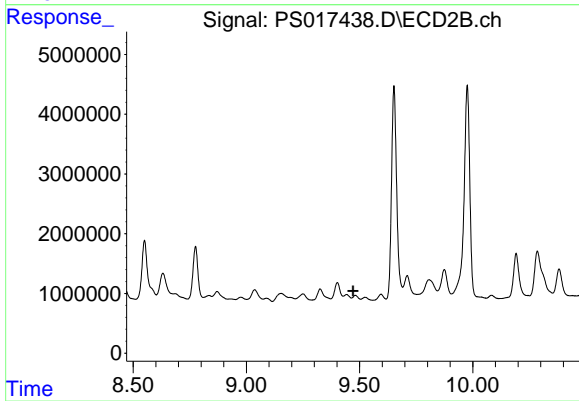
#11 2,4,5-TP (SILVEX)

R.T.: 0.000 min
 Exp R.T. : 8.589 min
 Response: 0
 Conc: N.D.



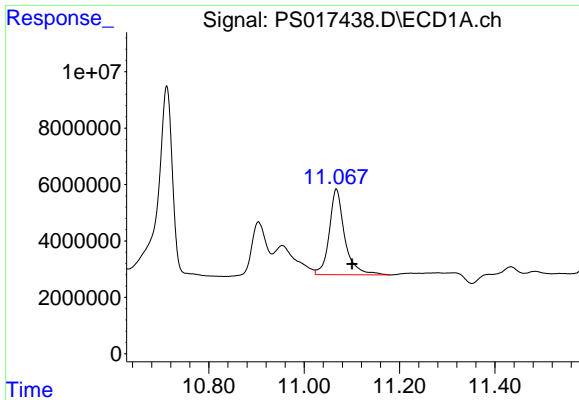
#13 2,4-DB

R.T.: 9.911 min
 Delta R.T.: -0.037 min
 Response: 12676792
 Conc: 8.43 ng/ml



#13 2,4-DB

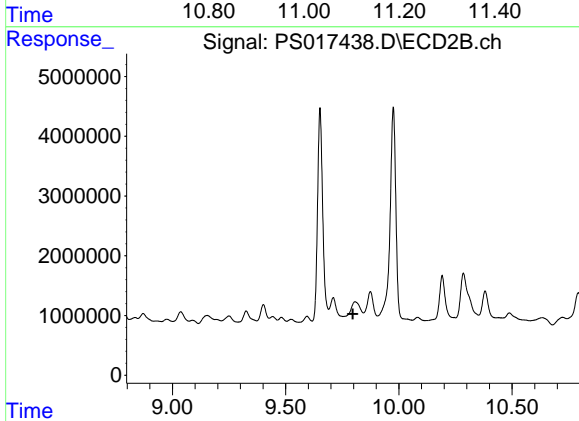
R.T.: 0.000 min
 Exp R.T. : 9.471 min
 Response: 0
 Conc: N.D.



#14 DINOSEB

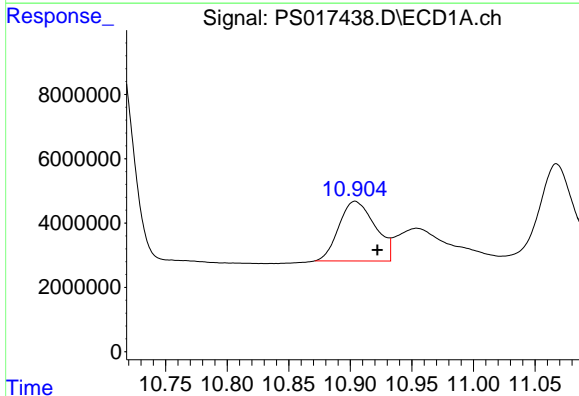
R.T.: 11.067 min
 Delta R.T.: -0.033 min
 Response: 68084070
 Conc: 12.02 ng/ml

Instrument :
 ECD_S
 ClientSampleId :



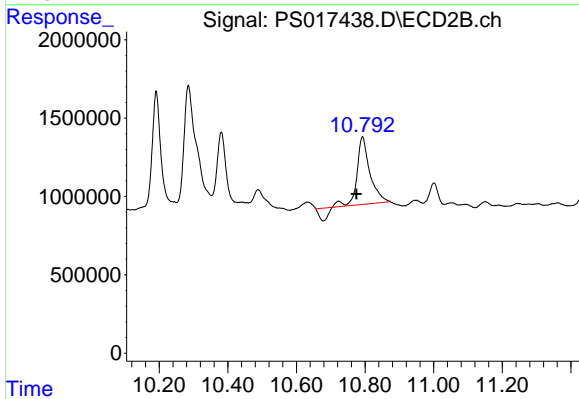
#14 DINOSEB

R.T.: 0.000 min
 Exp R.T. : 9.797 min
 Response: 0
 Conc: N.D.



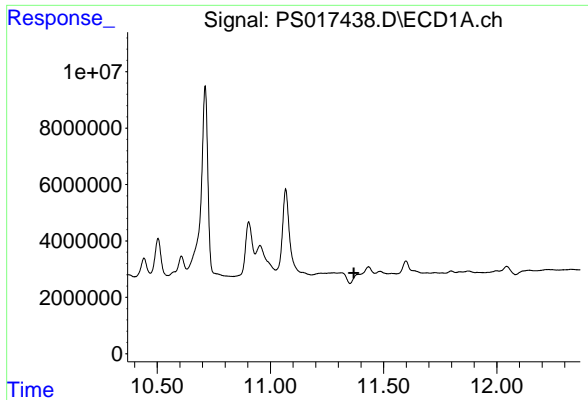
#15 Picloram

R.T.: 10.904 min
 Delta R.T.: -0.018 min
 Response: 38092605
 Conc: 3.57 ng/ml



#15 Picloram

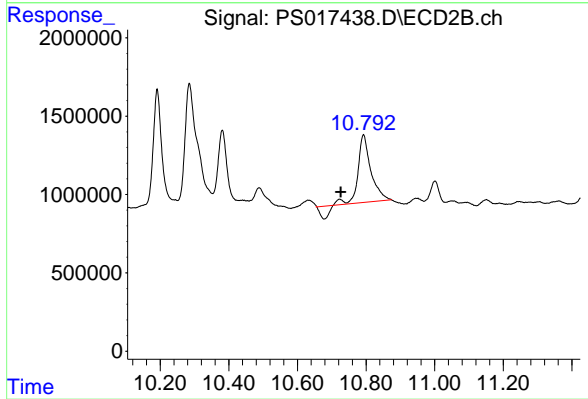
R.T.: 10.793 min
 Delta R.T.: 0.018 min
 Response: 10183519
 Conc: 2.66 ng/ml



#16 DCPA

R.T.: 0.000 min
 Exp R.T.: 11.369 min
 Response: 0
 Conc: N.D.

Instrument :
 ECD_S
 ClientSampleId :



#16 DCPA

R.T.: 10.793 min
 Delta R.T.: 0.066 min
 Response: 10183519
 Conc: 2.39 ng/ml