

Data Path : Z:\pestpcbsrv\HPCHEM1\ECD_S\Data\PS111819\
 Data File : PS007718.D
 Signal(s) : Signal #1: ECD1A.ch Signal #2: ECD2B.ch
 Acq On : 18 Nov 2019 19:31
 Operator : SM\AJ
 Sample : K5671-10
 Misc :
 ALS Vial : 11 Sample Multiplier: 1

Instrument :
 ECD_S
 ClientSampleId :
 OR-03-111419

Integration File signal 1: autoint1.e
 Integration File signal 2: autoint2.e
 Quant Time: Nov 19 04:04:57 2019
 Quant Method : Z:\pestpcbsrv\HPCHEM1\ECD_S\Method\PS110619.M
 Quant Title : 8080.M
 QLast Update : Wed Nov 06 02:45:11 2019
 Response via : Initial Calibration
 Integrator: ChemStation

Volume Inj. : 2 µl
 Signal #1 Phase : Rtx-CLPesticides Signal #2 Phase: Rtx-CLPesticides2
 Signal #1 Info : 30M x 0.32mm x0.5 Signal #2 Info : 30M x 0.32mm x 0.25µm

Compound	RT#1	RT#2	Resp#1	Resp#2	ng/ml	ng/ml

System Monitoring Compounds						
4) S 2,4-DCAA	5.449	5.173	247.5E6	149.1E6	179.700	212.165
Target Compounds						
1) T Dalapon	2.011	1.717	184.6E6	480.3E6	102.063	404.537 #
2) T 3,5-DICHL...	0.000	4.463	0	10432532	N.D.	11.548
3) T 4-Nitroph...	0.000	4.848	0	15873825	N.D.	38.576
7) T MCPA	0.000	5.486	0	60954375	N.D.	20.280
9) T 2,4-D	0.000	6.009	0	19736177	N.D.	24.474
10) T Pentachlo...	0.000	6.382	0	17499744	N.D.	1.787
11) T 2,4,5-TP ...	0.000	6.771	0	15889965	N.D.	4.058

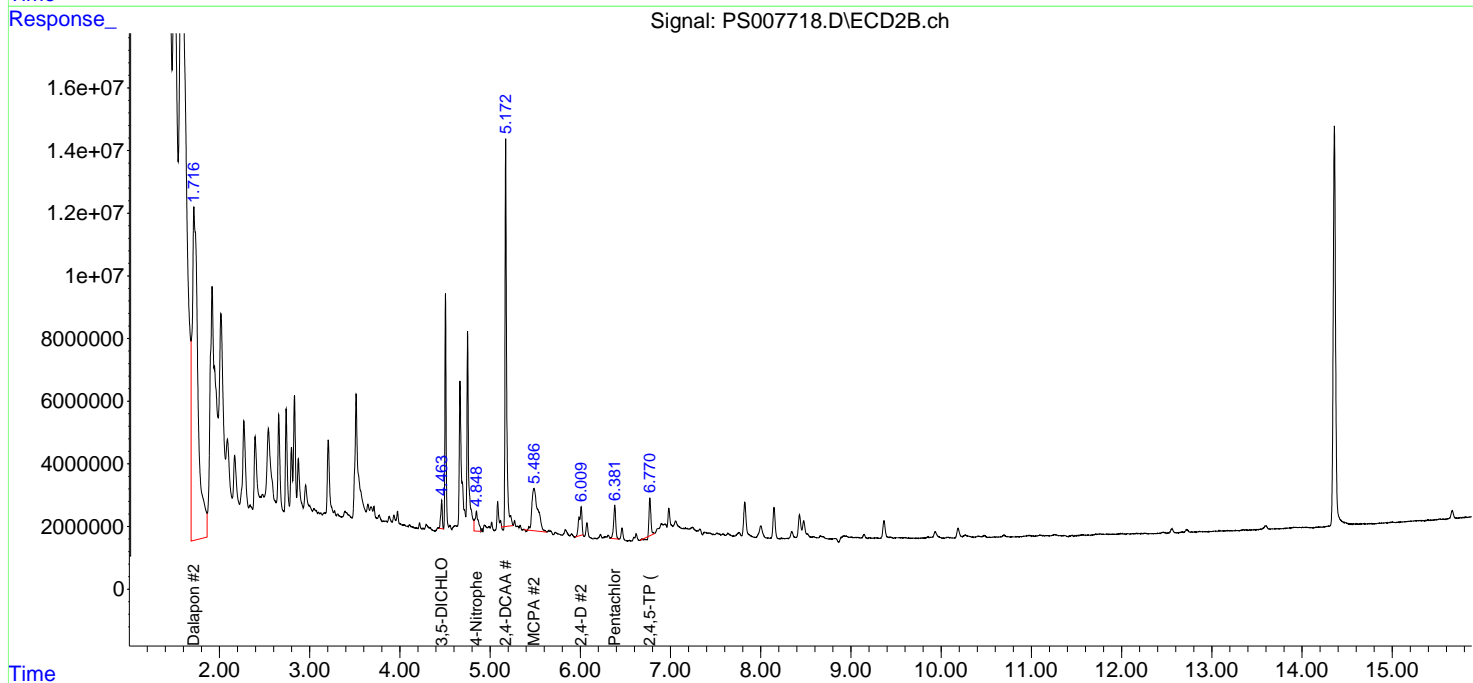
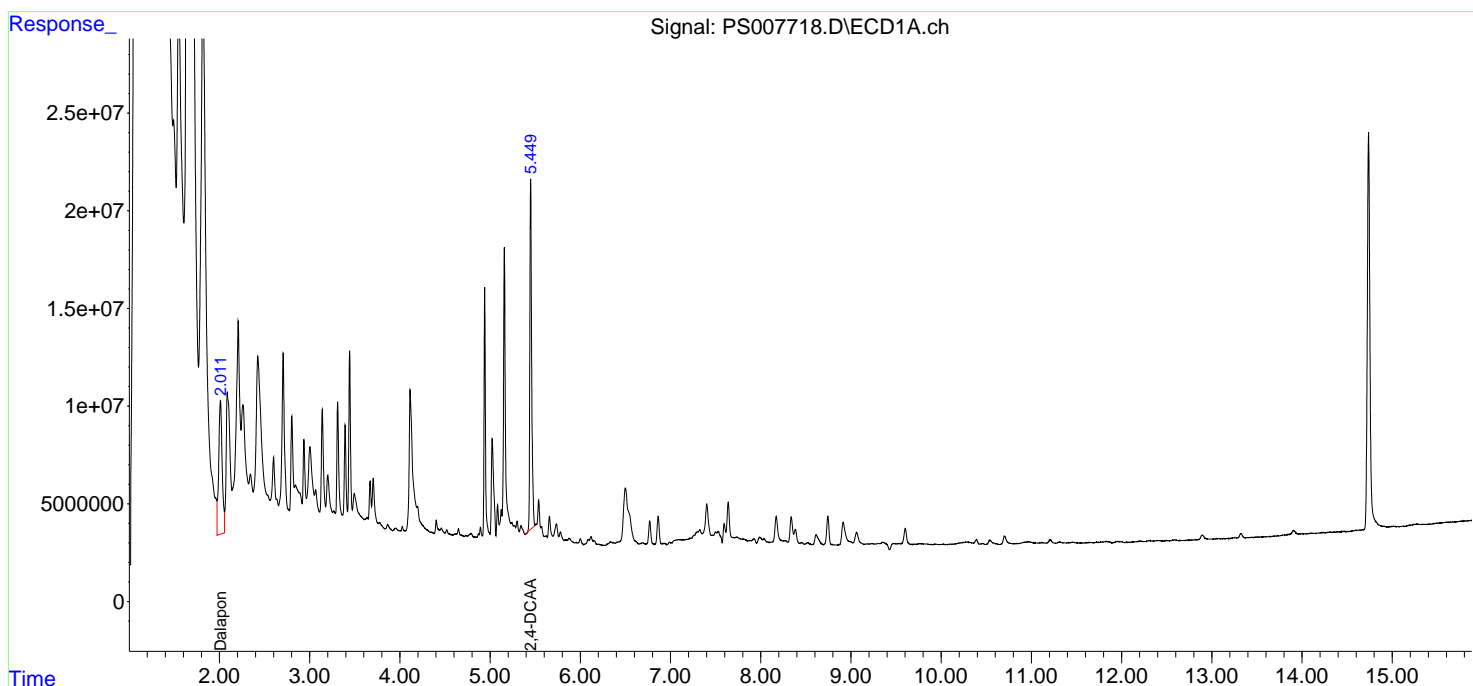
(f)=RT Delta > 1/2 Window (#)=Amounts differ by > 25% (m)=manual int.

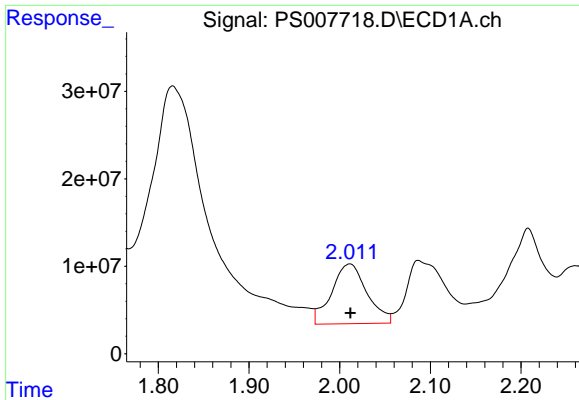
Data Path : Z:\pestpcbsrv\HPCHEM1\ECD_S\Data\PS111819\
Data File : PS007718.D
Signal(s) : Signal #1: ECD1A.ch Signal #2: ECD2B.ch
Acq On : 18 Nov 2019 19:31
Operator : SM\AJ
Sample : K5671-10
Misc :
ALS Vial : 11 Sample Multiplier: 1

Instrument :
ECD_S
ClientSampled :
OR-03-111419

Integration File signal 1: autoint1.e
Integration File signal 2: autoint2.e
Quant Time: Nov 19 04:04:57 2019
Quant Method : Z:\pestpcbsrv\HPCHEM1\ECD_S\Method\PS110619.M
Quant Title : 8080.M
QLast Update : Wed Nov 06 02:45:11 2019
Response via : Initial Calibration
Integrator: ChemStation

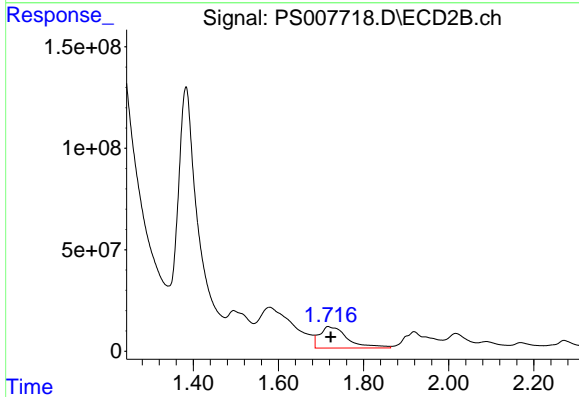
Volume Inj. : 2 µl
Signal #1 Phase : Rtx-CLPesticides Signal #2 Phase: Rtx-CLPesticides2
Signal #1 Info : 30M x 0.32mm x 0.5 Signal #2 Info : 30M x 0.32mm x 0.25µm



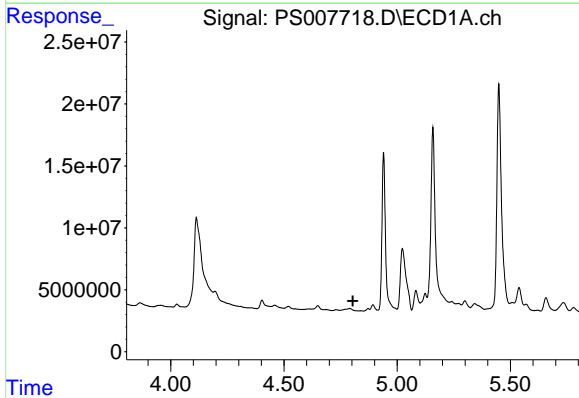


#1 Dalapon
 R.T.: 2.011 min
 Delta R.T.: 0.000 min
 Response: 184649545
 Conc: 102.06 ng/ml

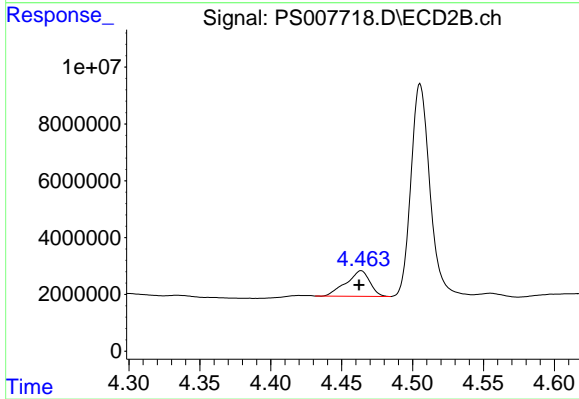
Instrument :
 ECD_S
 ClientSampled :
 OR-03-111419



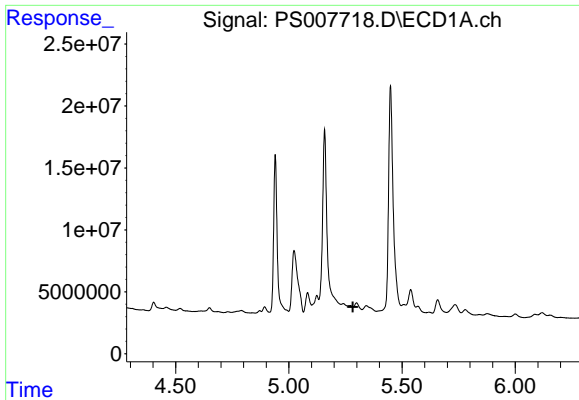
#1 Dalapon
 R.T.: 1.717 min
 Delta R.T.: -0.006 min
 Response: 480347789
 Conc: 404.54 ng/ml



#2 3,5-DICHLOROBENZOIC ACID
 R.T.: 0.000 min
 Exp R.T. : 4.804 min
 Response: 0
 Conc: N.D.



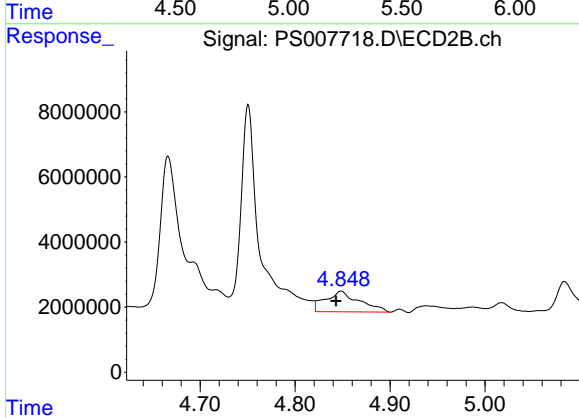
#2 3,5-DICHLOROBENZOIC ACID
 R.T.: 4.463 min
 Delta R.T.: 0.001 min
 Response: 10432532
 Conc: 11.55 ng/ml



#3 4-Nitrophenol

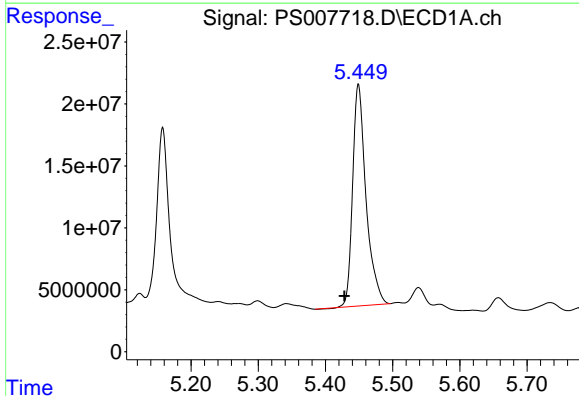
R.T.: 0.000 min
 Exp R.T.: 5.283 min
 Response: 0
 Conc: N.D.

Instrument :
 ECD_S
 ClientSampleId :
 OR-03-111419



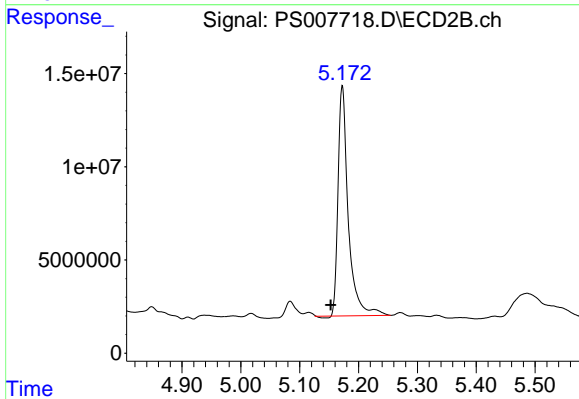
#3 4-Nitrophenol

R.T.: 4.848 min
 Delta R.T.: 0.005 min
 Response: 15873825
 Conc: 38.58 ng/ml



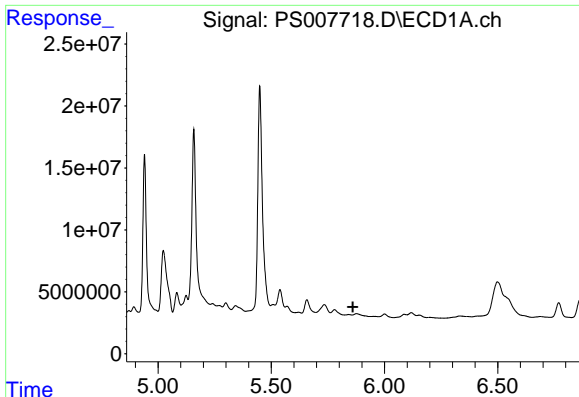
#4 2,4-DCAA

R.T.: 5.449 min
 Delta R.T.: 0.021 min
 Response: 247480649
 Conc: 179.70 ng/ml



#4 2,4-DCAA

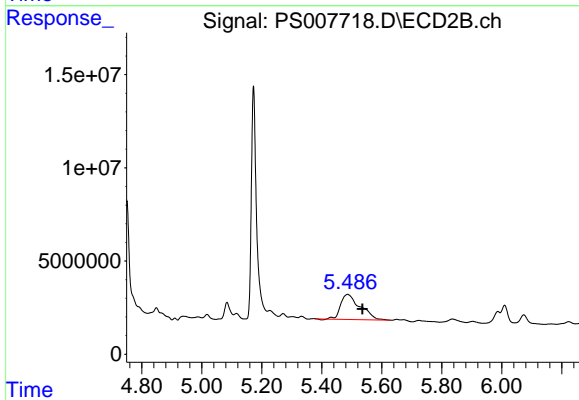
R.T.: 5.173 min
 Delta R.T.: 0.020 min
 Response: 149059823
 Conc: 212.17 ng/ml



#7 MCPA

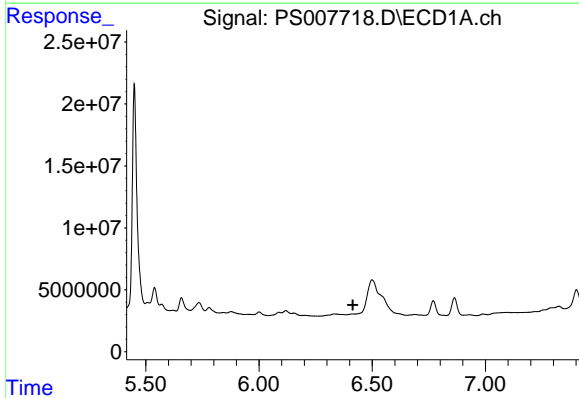
R.T.: 0.000 min
 Exp R.T. : 5.860 min
 Response: 0
 Conc: N.D.

Instrument :
 ECD_S
 ClientSampleId :
 OR-03-111419



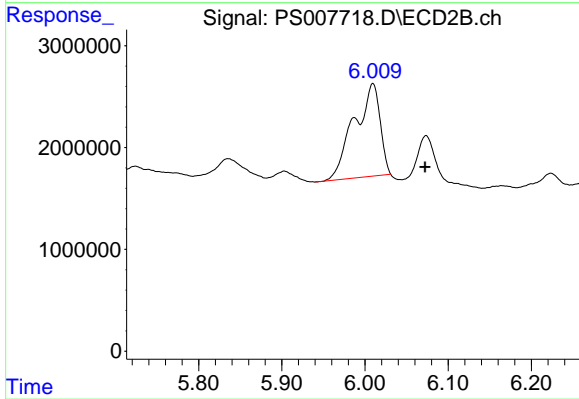
#7 MCPA

R.T.: 5.486 min
 Delta R.T.: -0.050 min
 Response: 60954375
 Conc: 20.28 ug/ml



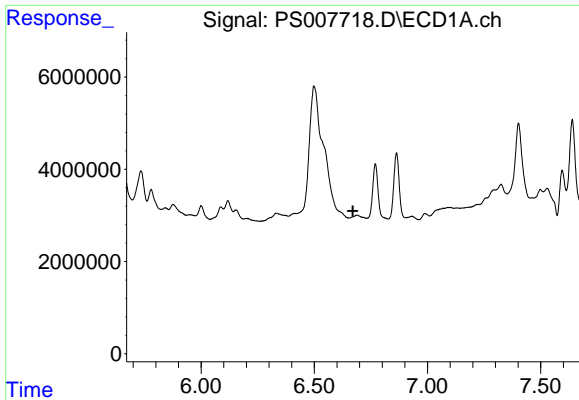
#9 2,4-D

R.T.: 0.000 min
 Exp R.T. : 6.414 min
 Response: 0
 Conc: N.D.



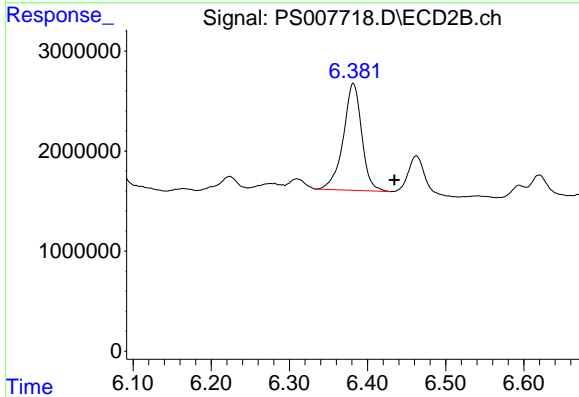
#9 2,4-D

R.T.: 6.009 min
 Delta R.T.: -0.063 min
 Response: 19736177
 Conc: 24.47 ng/ml

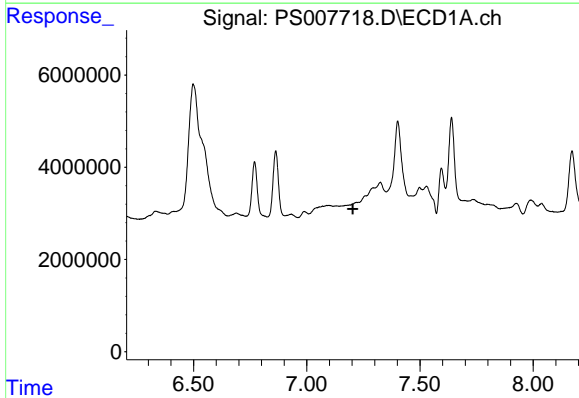


#10 Pentachlorophenol
 R.T.: 0.000 min
 Exp R.T.: 6.671 min
 Response: 0
 Conc: N.D.

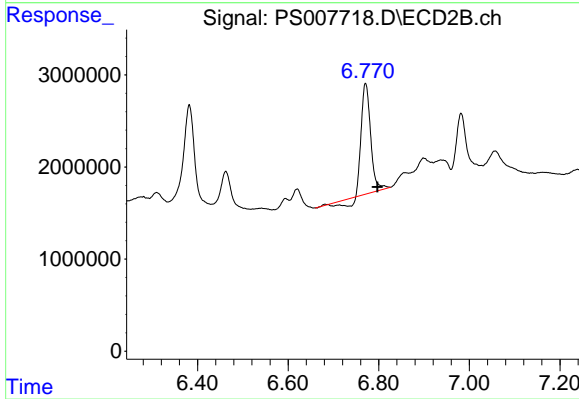
Instrument :
 ECD_S
 ClientSampleId :
 OR-03-111419



#10 Pentachlorophenol
 R.T.: 6.382 min
 Delta R.T.: -0.053 min
 Response: 17499744
 Conc: 1.79 ng/ml



#11 2,4,5-TP (SILVEX)
 R.T.: 0.000 min
 Exp R.T.: 7.203 min
 Response: 0
 Conc: N.D.



#11 2,4,5-TP (SILVEX)
 R.T.: 6.771 min
 Delta R.T.: -0.026 min
 Response: 15889965
 Conc: 4.06 ng/ml