

Data Path : Z:\pestpcbsrv\HPCHEM1\ECD\_S\Data\PS111918\  
 Data File : PS002443.D  
 Signal(s) : Signal #1: ECD1A.ch Signal #2: ECD2B.ch  
 Acq On : 19 Nov 2018 17:26  
 Operator : EI\SJ  
 Sample : PB114918BL  
 Misc :  
 ALS Vial : 5 Sample Multiplier: 1

Instrument :  
 ECD\_S  
 ClientSampleId :

Integration File signal 1: autoint1.e  
 Integration File signal 2: autoint2.e  
 Quant Time: Nov 20 02:33:02 2018  
 Quant Method : Z:\pestpcbsrv\HPCHEM1\ECD\_S\Method\PS110918.M  
 Quant Title : 8080.M  
 QLast Update : Fri Nov 09 15:54:35 2018  
 Response via : Initial Calibration  
 Integrator: ChemStation

Volume Inj. : 2 µl  
 Signal #1 Phase : Rtx-CLPesticides Signal #2 Phase: Rtx-CLPesticides2  
 Signal #1 Info : 30M x 0.32mm x0.5 Signal #2 Info : 30M x 0.32mm x 0.25µm

|                             | Compound     | RT#1   | RT#2   | Resp#1   | Resp#2   | ng/ml   | ng/ml    |
|-----------------------------|--------------|--------|--------|----------|----------|---------|----------|
| -----                       |              |        |        |          |          |         |          |
| System Monitoring Compounds |              |        |        |          |          |         |          |
| 4) S                        | 2,4-DCAA     | 11.427 | 10.919 | 168.6E6  | 174.6E6  | 553.637 | 477.277  |
| Target Compounds            |              |        |        |          |          |         |          |
| 1) T                        | Dalapon      | 2.905  | 2.359  | 16583790 | 42412619 | 37.609  | 98.544 # |
| 3) T                        | 4-Nitroph... | 11.076 | 10.076 | 2837279  | 10712187 | 17.487  | 61.138 # |
| 6) T                        | MCP          | 12.110 | 0.000  | 12209666 | 0        | 13.009  | N.D. #   |
| 7) T                        | MCPA         | 12.386 | 11.821 | 1241246  | 2108666  | 0.859   | 1.498 #  |
| 8) T                        | DICHLORPROP  | 0.000  | 12.335 | 0        | 1740465  | N.D.    | 5.252 #  |
| 9) T                        | 2,4-D        | 13.346 | 12.786 | 2076304  | 638847   | 6.460   | 1.600 #  |
| 10) T                       | Pentachlo... | 13.662 | 13.342 | 7331547  | 6037319  | 1.516   | 1.186    |
| 12) T                       | 2,4,5-T      | 0.000  | 14.540 | 0        | 8050710  | N.D.    | 5.150 #  |
| 14) T                       | DINOSEB      | 0.000  | 15.594 | 0        | 5040864  | N.D.    | 3.368 #  |
| 15) T                       | Picloram     | 16.966 | 16.846 | 15749869 | 49314084 | 7.416   | 18.537 # |
| 16) T                       | DCPA         | 0.000  | 16.846 | 0        | 49314084 | N.D.    | 20.563 # |
| -----                       |              |        |        |          |          |         |          |

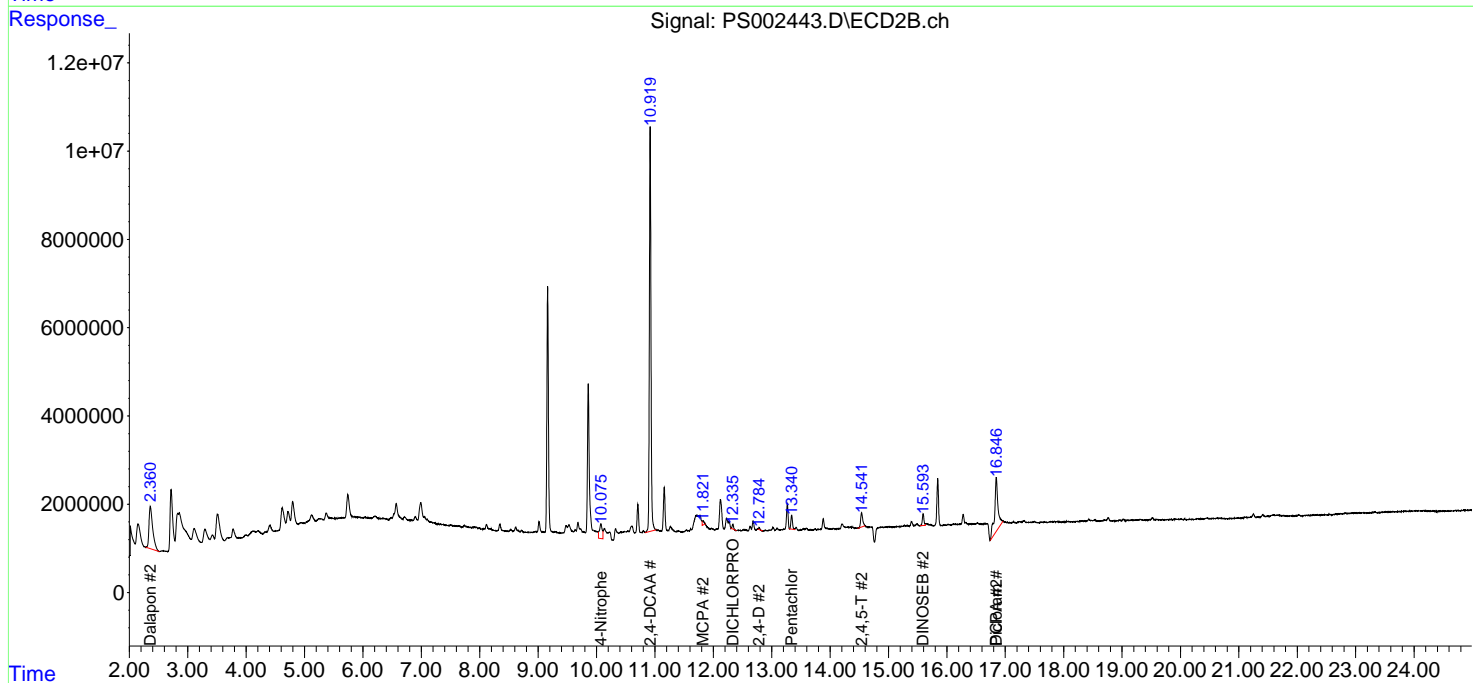
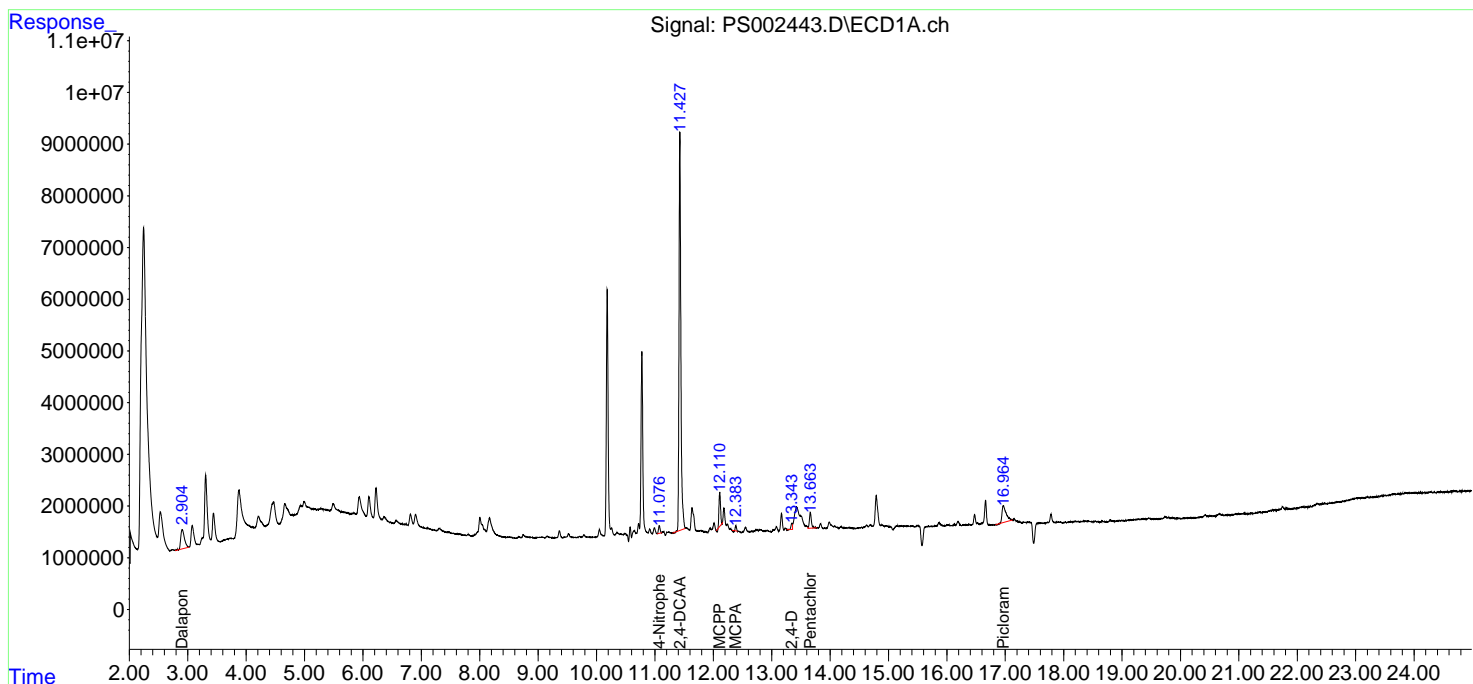
(f)=RT Delta > 1/2 Window (#)=Amounts differ by > 25% (m)=manual int.

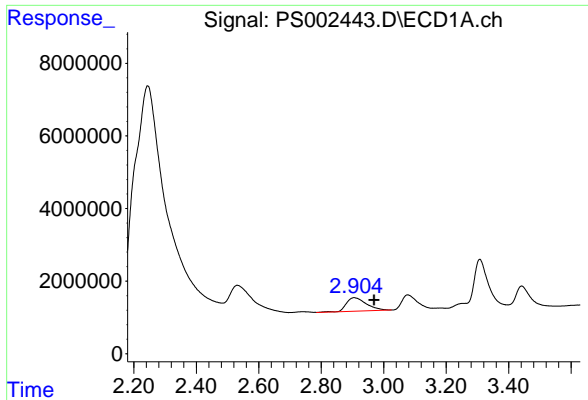
Data Path : Z:\pestpcbsrv\HPCHEM1\ECD\_S\Data\PS111918\  
 Data File : PS002443.D  
 Signal(s) : Signal #1: ECD1A.ch Signal #2: ECD2B.ch  
 Acq On : 19 Nov 2018 17:26  
 Operator : EI\SJ  
 Sample : PB114918BL  
 Misc :  
 ALS Vial : 5 Sample Multiplier: 1

Instrument :  
 ECD\_S  
 ClientSampleId :

Integration File signal 1: autoint1.e  
 Integration File signal 2: autoint2.e  
 Quant Time: Nov 20 02:33:02 2018  
 Quant Method : Z:\pestpcbsrv\HPCHEM1\ECD\_S\Method\PS110918.M  
 Quant Title : 8080.M  
 QLast Update : Fri Nov 09 15:54:35 2018  
 Response via : Initial Calibration  
 Integrator: ChemStation

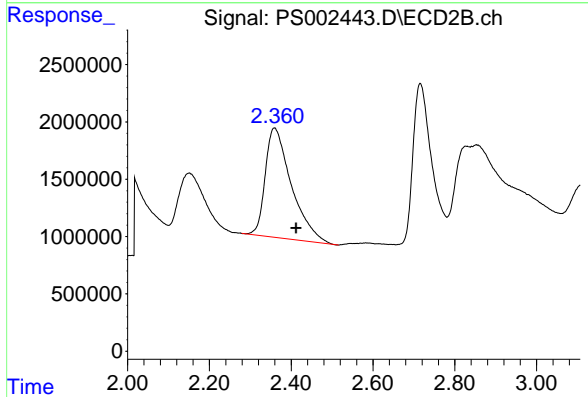
Volume Inj. : 2 µl  
 Signal #1 Phase : Rtx-CLPesticides Signal #2 Phase: Rtx-CLPesticides2  
 Signal #1 Info : 30M x 0.32mm x0.5 Signal #2 Info : 30M x 0.32mm x 0.25µm



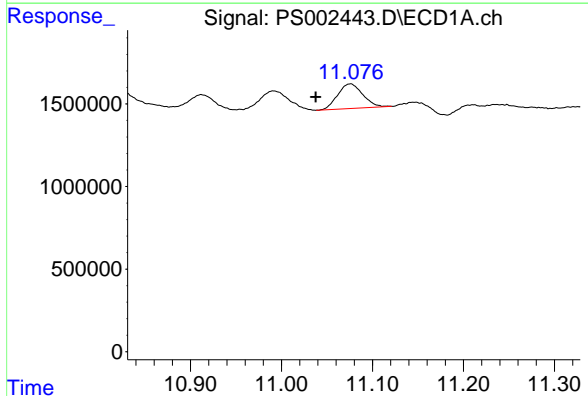


#1 Dalapon  
 R.T.: 2.905 min  
 Delta R.T.: -0.064 min  
 Response: 16583790  
 Conc: 37.61 ng/ml

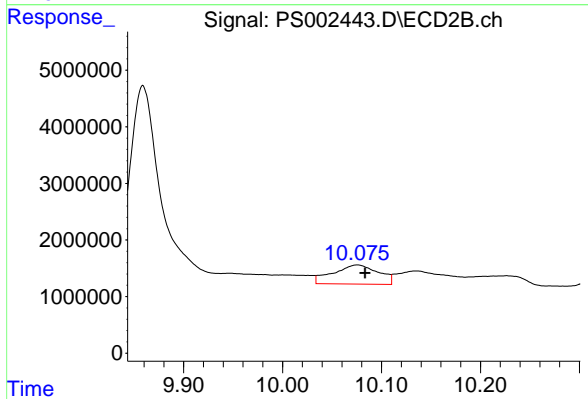
Instrument :  
 ECD\_S  
 ClientSampled :



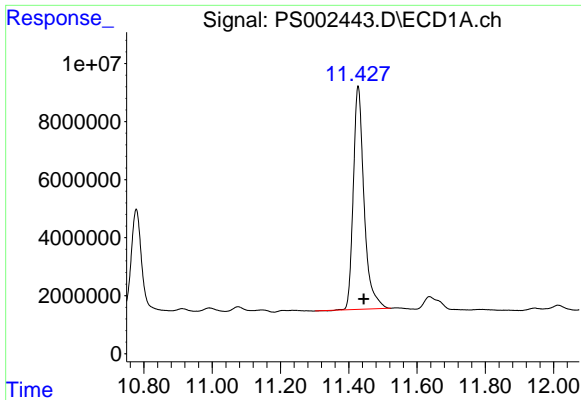
#1 Dalapon  
 R.T.: 2.359 min  
 Delta R.T.: -0.053 min  
 Response: 42412619  
 Conc: 98.54 ng/ml



#3 4-Nitrophenol  
 R.T.: 11.076 min  
 Delta R.T.: 0.038 min  
 Response: 2837279  
 Conc: 17.49 ng/ml



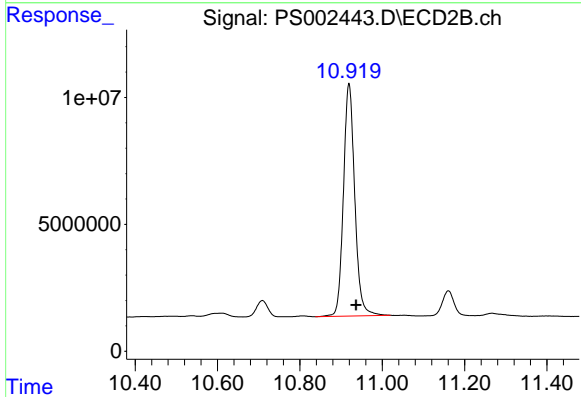
#3 4-Nitrophenol  
 R.T.: 10.076 min  
 Delta R.T.: -0.008 min  
 Response: 10712187  
 Conc: 61.14 ng/ml



#4 2,4-DCAA

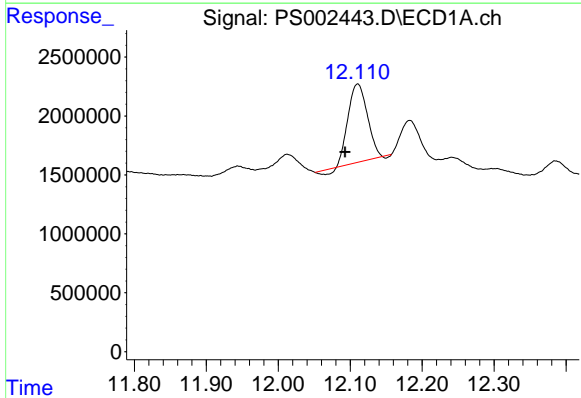
R.T.: 11.427 min  
Delta R.T.: -0.016 min  
Response: 168637675  
Conc: 553.64 ng/ml

Instrument :  
ECD\_S  
ClientSampleId :



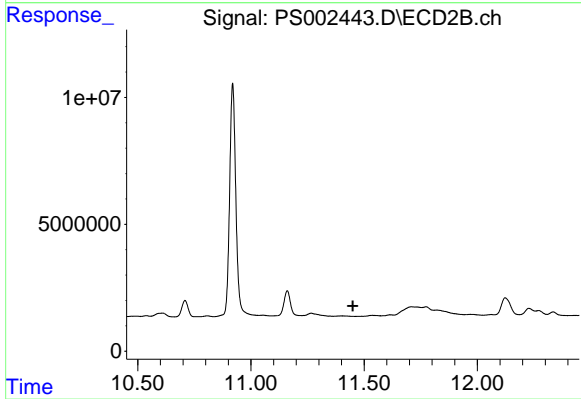
#4 2,4-DCAA

R.T.: 10.919 min  
Delta R.T.: -0.017 min  
Response: 174641366  
Conc: 477.28 ng/ml



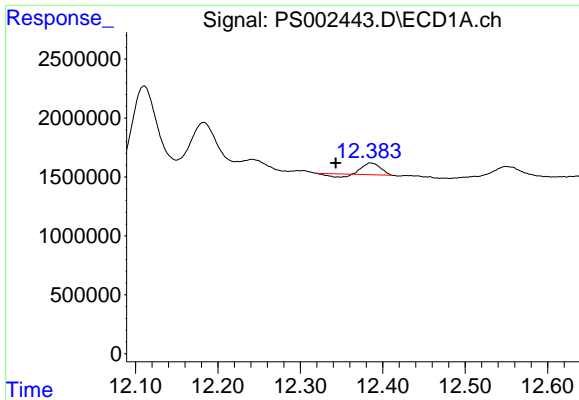
#6 MCP

R.T.: 12.110 min  
Delta R.T.: 0.018 min  
Response: 12209666  
Conc: 13.01 ug/ml



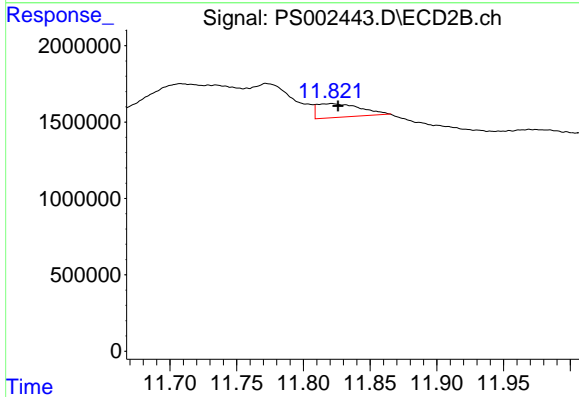
#6 MCP

R.T.: 0.000 min  
Exp R.T.: 11.450 min  
Response: 0  
Conc: N.D.

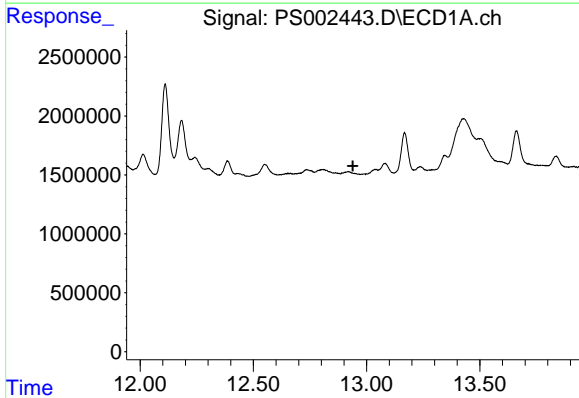


#7 MCPA  
 R.T.: 12.386 min  
 Delta R.T.: 0.043 min  
 Response: 1241246  
 Conc: 0.86 ug/ml

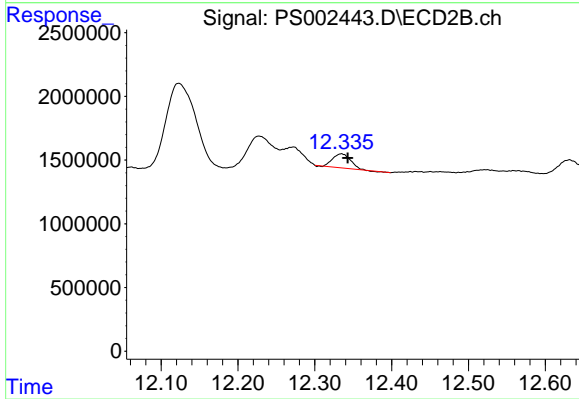
Instrument :  
 ECD\_S  
 ClientSampled :



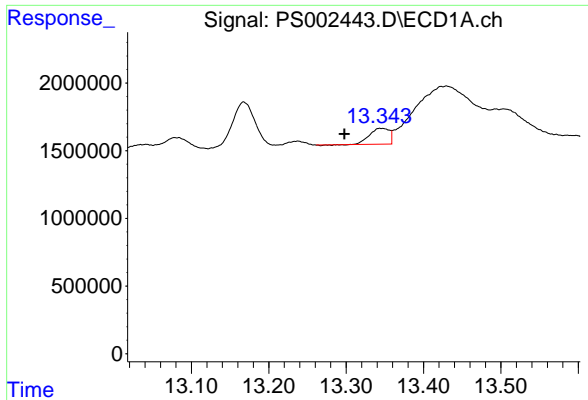
#7 MCPA  
 R.T.: 11.821 min  
 Delta R.T.: -0.005 min  
 Response: 2108666  
 Conc: 1.50 ug/ml



#8 DICHLORPROP  
 R.T.: 0.000 min  
 Exp R.T. : 12.939 min  
 Response: 0  
 Conc: N.D.

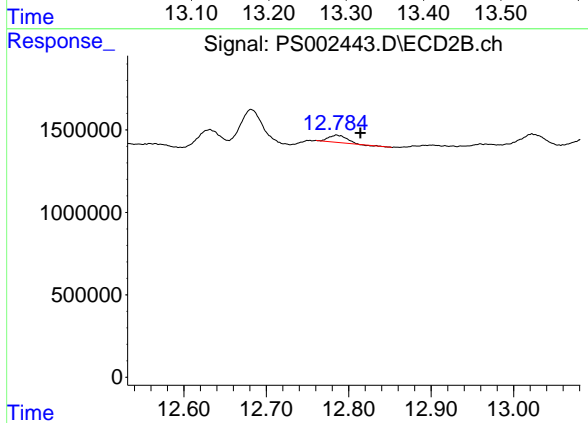


#8 DICHLORPROP  
 R.T.: 12.335 min  
 Delta R.T.: -0.008 min  
 Response: 1740465  
 Conc: 5.25 ng/ml

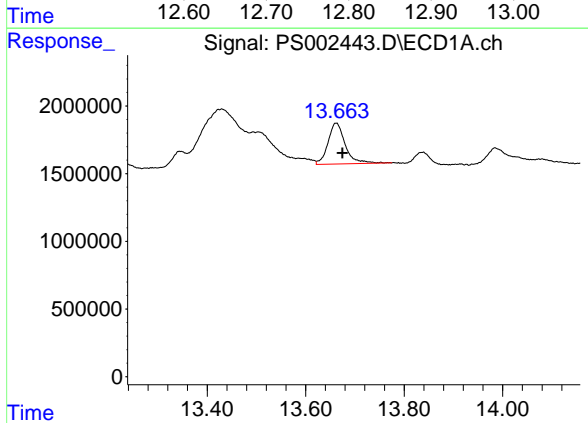


#9 2,4-D  
 R.T.: 13.346 min  
 Delta R.T.: 0.048 min  
 Response: 2076304  
 Conc: 6.46 ng/ml

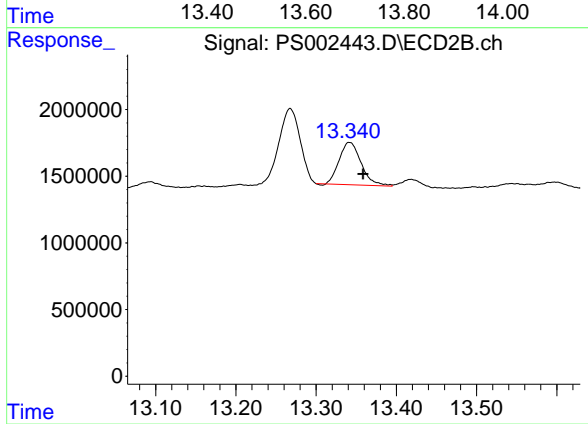
Instrument :  
 ECD\_S  
 ClientSampled :



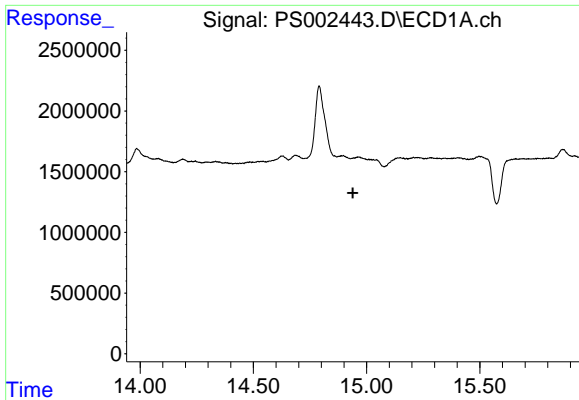
#9 2,4-D  
 R.T.: 12.786 min  
 Delta R.T.: -0.028 min  
 Response: 638847  
 Conc: 1.60 ng/ml



#10 Pentachlorophenol  
 R.T.: 13.662 min  
 Delta R.T.: -0.013 min  
 Response: 7331547  
 Conc: 1.52 ng/ml



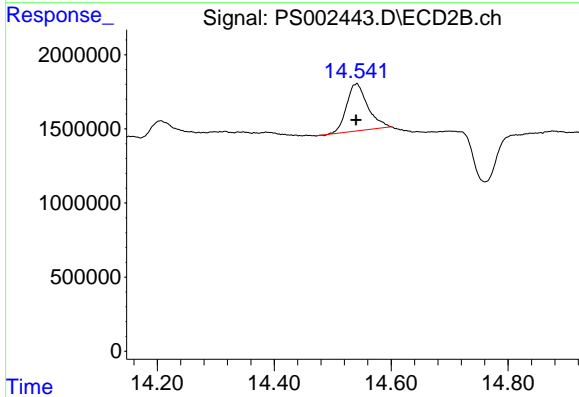
#10 Pentachlorophenol  
 R.T.: 13.342 min  
 Delta R.T.: -0.017 min  
 Response: 6037319  
 Conc: 1.19 ng/ml



#12 2,4,5-T

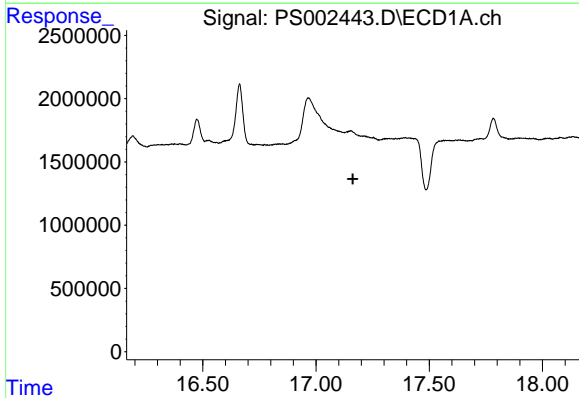
R.T.: 0.000 min  
 Exp R.T.: 14.940 min  
 Response: 0  
 Conc: N.D.

Instrument :  
 ECD\_S  
 ClientSampleId :



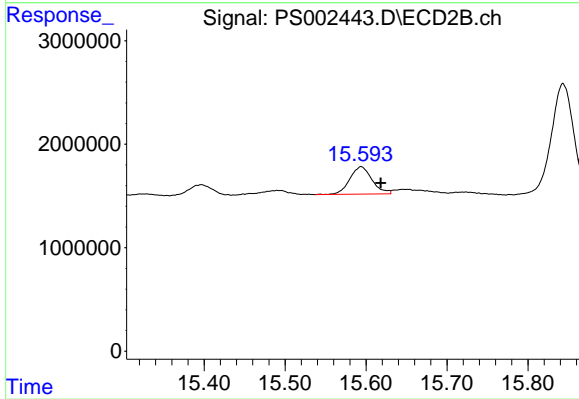
#12 2,4,5-T

R.T.: 14.540 min  
 Delta R.T.: 0.000 min  
 Response: 8050710  
 Conc: 5.15 ng/ml



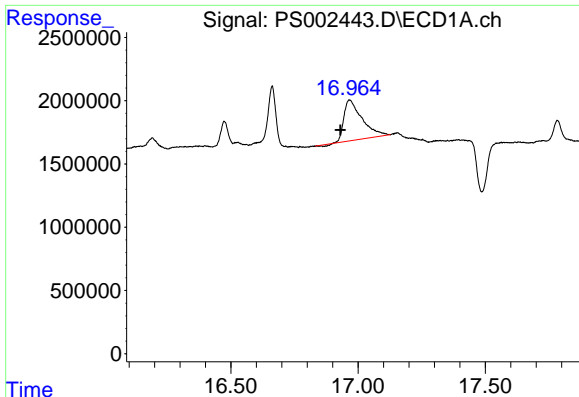
#14 DINOSEB

R.T.: 0.000 min  
 Exp R.T.: 17.163 min  
 Response: 0  
 Conc: N.D.



#14 DINOSEB

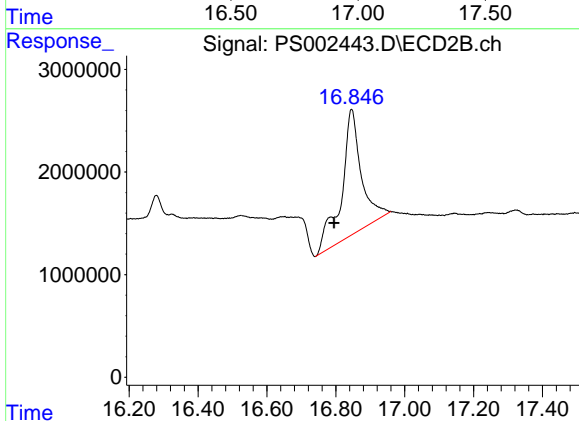
R.T.: 15.594 min  
 Delta R.T.: -0.024 min  
 Response: 5040864  
 Conc: 3.37 ng/ml



#15 Picloram

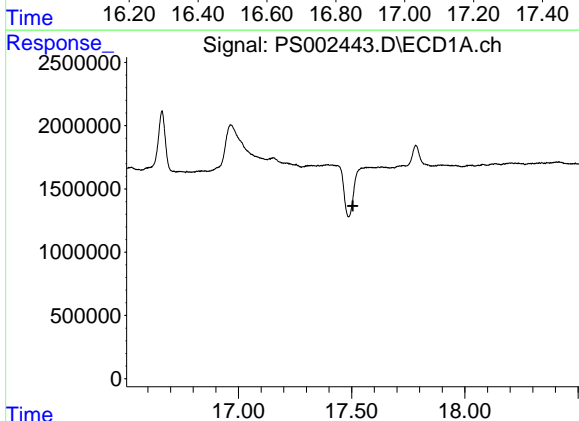
R.T.: 16.966 min  
 Delta R.T.: 0.035 min  
 Response: 15749869  
 Conc: 7.42 ng/ml

Instrument :  
 ECD\_S  
 ClientSampled :



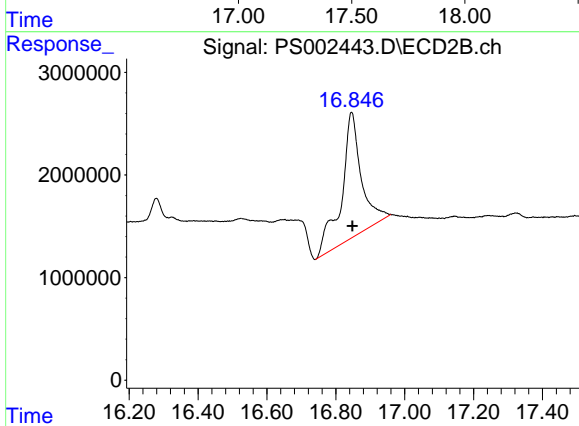
#15 Picloram

R.T.: 16.846 min  
 Delta R.T.: 0.051 min  
 Response: 49314084  
 Conc: 18.54 ng/ml



#16 DCPA

R.T.: 0.000 min  
 Exp R.T. : 17.506 min  
 Response: 0  
 Conc: N.D.



#16 DCPA

R.T.: 16.846 min  
 Delta R.T.: -0.002 min  
 Response: 49314084  
 Conc: 20.56 ng/ml