

Data Path : Z:\pestpcbsrv\HPCHEM1\ECD_S\Data\PS111919\
 Data File : PS007743.D
 Signal(s) : Signal #1: ECD1A.ch Signal #2: ECD2B.ch
 Acq On : 19 Nov 2019 09:52
 Operator : SM\AJ
 Sample : K5671-10RE
 Misc :
 ALS Vial : 4 Sample Multiplier: 1

Instrument :
 ECD_S
 ClientSampleId :

Integration File signal 1: autoint1.e
 Integration File signal 2: autoint2.e
 Quant Time: Nov 19 10:16:22 2019
 Quant Method : Z:\pestpcbsrv\HPCHEM1\ECD_S\Method\PS110619.M
 Quant Title : 8080.M
 QLast Update : Wed Nov 06 02:45:11 2019
 Response via : Initial Calibration
 Integrator: ChemStation

Volume Inj. : 2 µl
 Signal #1 Phase : Rtx-CLPesticides Signal #2 Phase: Rtx-CLPesticides2
 Signal #1 Info : 30M x 0.32mm x0.5 Signal #2 Info : 30M x 0.32mm x 0.25µm

Compound	RT#1	RT#2	Resp#1	Resp#2	ng/ml	ng/ml

System Monitoring Compounds						
4) S 2,4-DCAA	5.434	0.000	258.4E6	0	187.658	N.D. #
Target Compounds						
1) T Dalapon	1.997	1.701	118.3E6	352.4E6	65.369	296.770 #
2) T 3,5-DICHL...	0.000	4.448	0	7208539	N.D.	7.979
3) T 4-Nitroph...	0.000	4.832	0	16552385	N.D.	40.225
7) T MCPA	0.000	5.474	0	61671666	N.D.	20.518
8) T DICHLORPROP	0.000	5.815	0	9804020	N.D.	14.950
9) T 2,4-D	6.482	6.057	116.3E6	6266543	82.930	7.771 #
10) T Pentachlo...	0.000	6.366	0	18638697	N.D.	1.903
11) T 2,4,5-TP ...	0.000	6.755	0	19202191	N.D.	4.904

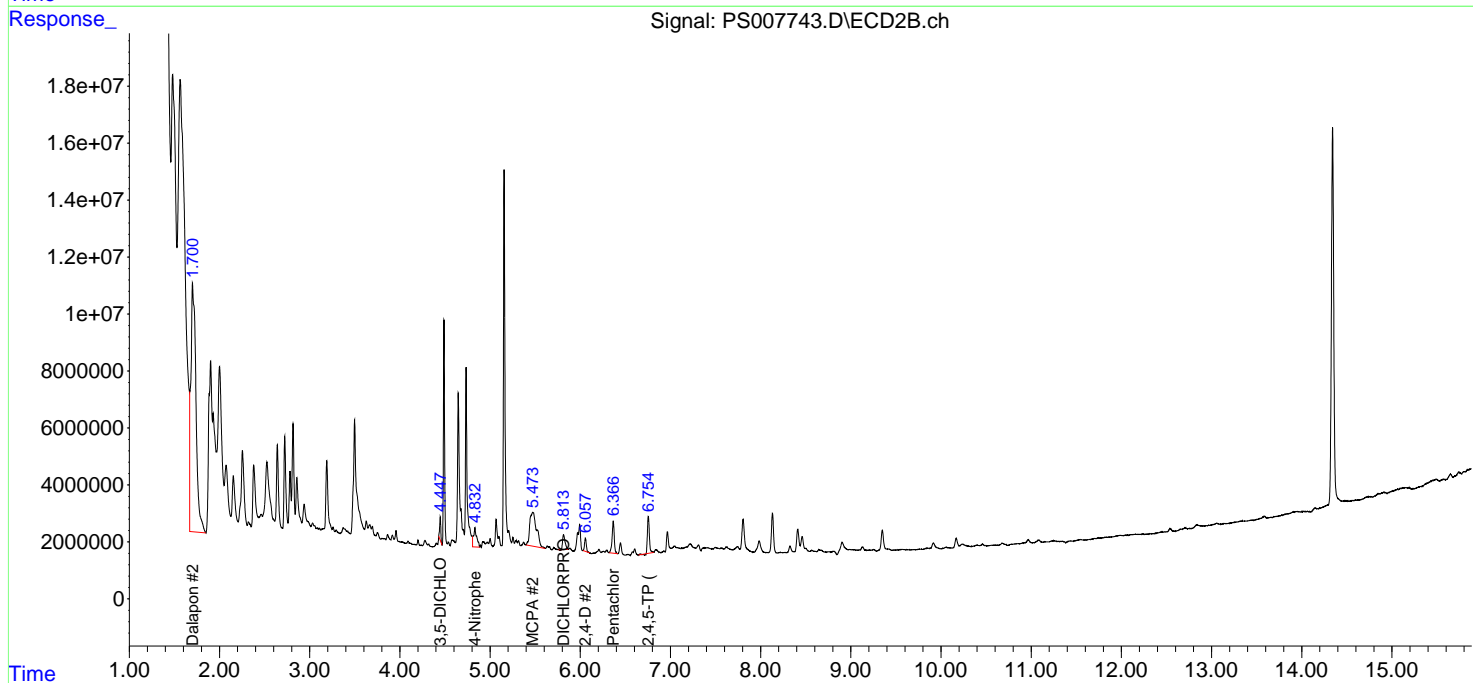
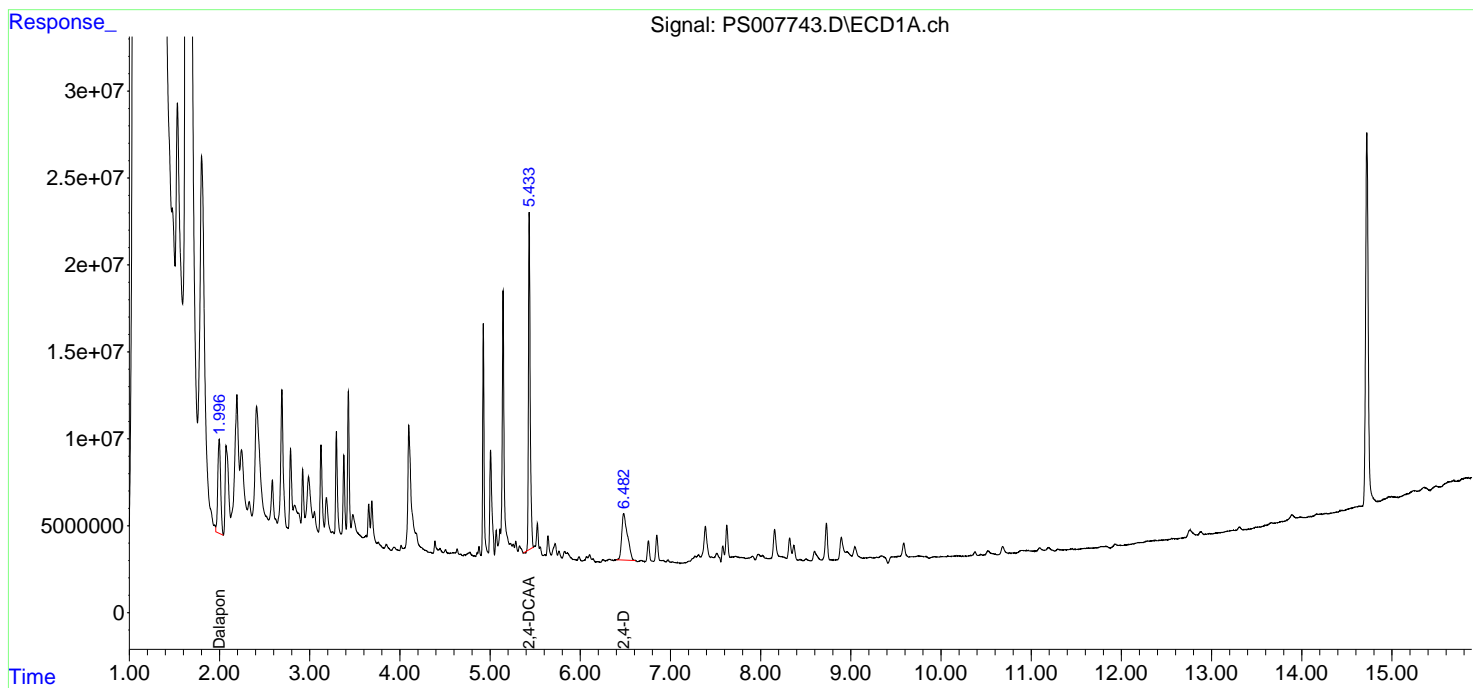
(f)=RT Delta > 1/2 Window (#)=Amounts differ by > 25% (m)=manual int.

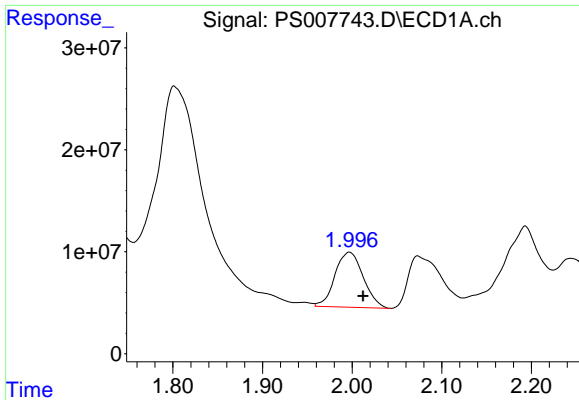
Data Path : Z:\pestpcbsrv\HPCHEM1\ECD_S\Data\PS111919\
 Data File : PS007743.D
 Signal(s) : Signal #1: ECD1A.ch Signal #2: ECD2B.ch
 Acq On : 19 Nov 2019 09:52
 Operator : SM\AJ
 Sample : K5671-10RE
 Misc :
 ALS Vial : 4 Sample Multiplier: 1

Instrument :
 ECD_S
 ClientSampled :

Integration File signal 1: autoint1.e
 Integration File signal 2: autoint2.e
 Quant Time: Nov 19 10:16:22 2019
 Quant Method : Z:\pestpcbsrv\HPCHEM1\ECD_S\Method\PS110619.M
 Quant Title : 8080.M
 QLast Update : Wed Nov 06 02:45:11 2019
 Response via : Initial Calibration
 Integrator: ChemStation

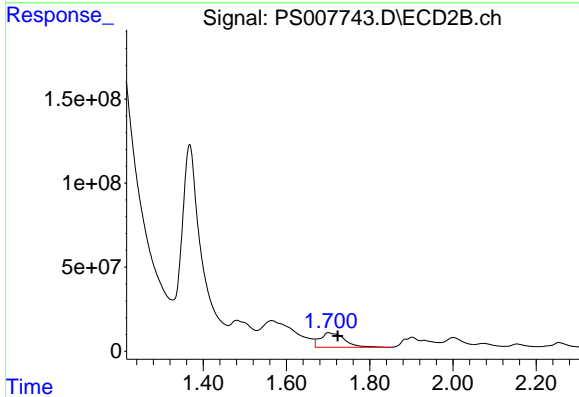
Volume Inj. : 2 µl
 Signal #1 Phase : Rtx-CLPesticides Signal #2 Phase: Rtx-CLPesticides2
 Signal #1 Info : 30M x 0.32mm x 0.5 Signal #2 Info : 30M x 0.32mm x 0.25µm



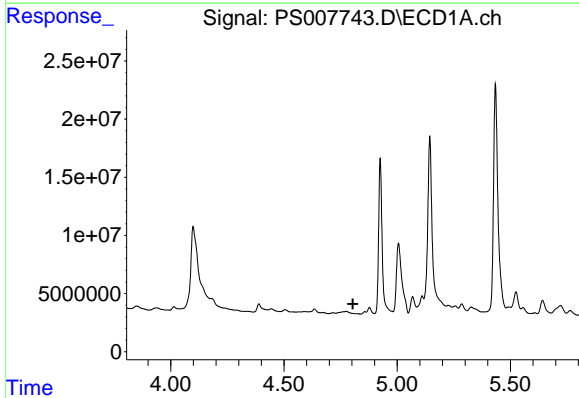


#1 Dalapon
 R.T.: 1.997 min
 Delta R.T.: -0.015 min
 Response: 118265041
 Conc: 65.37 ng/ml

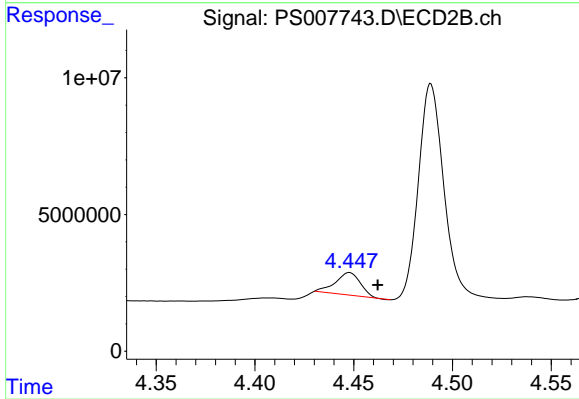
Instrument :
 ECD_S
 ClientSampleId :



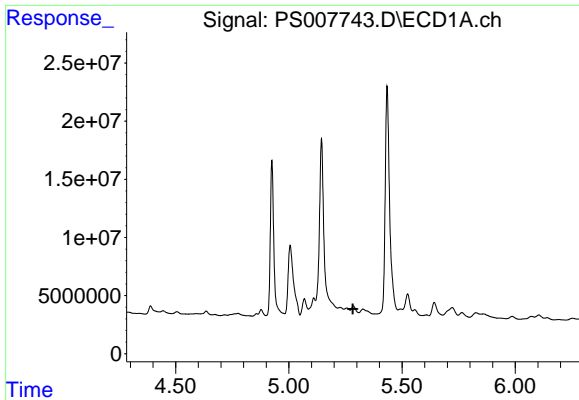
#1 Dalapon
 R.T.: 1.701 min
 Delta R.T.: -0.022 min
 Response: 352385653
 Conc: 296.77 ng/ml



#2 3,5-DICHLOROBENZOIC ACID
 R.T.: 0.000 min
 Exp R.T. : 4.804 min
 Response: 0
 Conc: N.D.



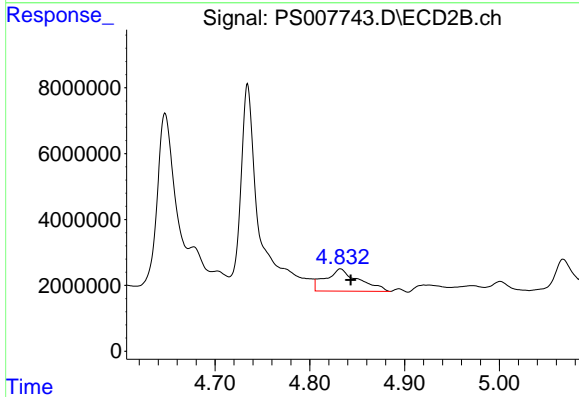
#2 3,5-DICHLOROBENZOIC ACID
 R.T.: 4.448 min
 Delta R.T.: -0.015 min
 Response: 7208539
 Conc: 7.98 ng/ml



#3 4-Nitrophenol

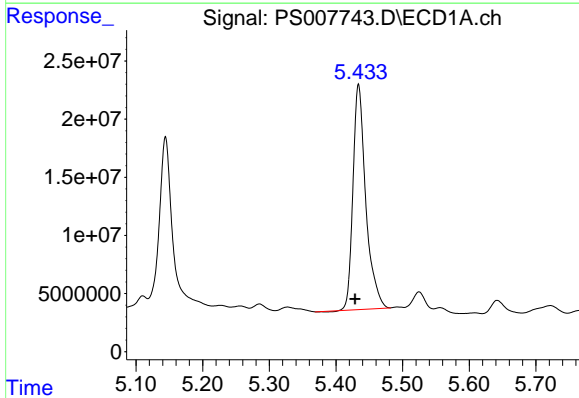
R.T.: 0.000 min
 Exp R.T.: 5.283 min
 Response: 0
 Conc: N.D.

Instrument :
 ECD_S
 ClientSampled :



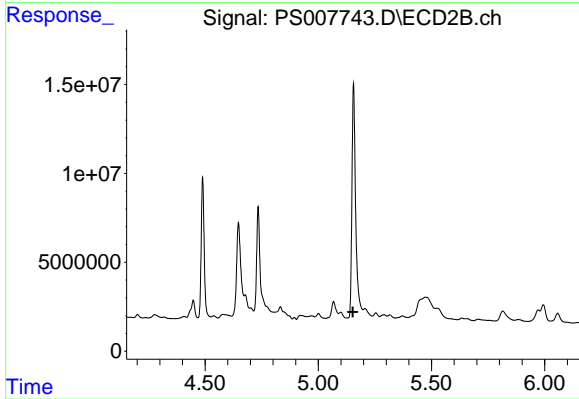
#3 4-Nitrophenol

R.T.: 4.832 min
 Delta R.T.: -0.011 min
 Response: 16552385
 Conc: 40.23 ng/ml



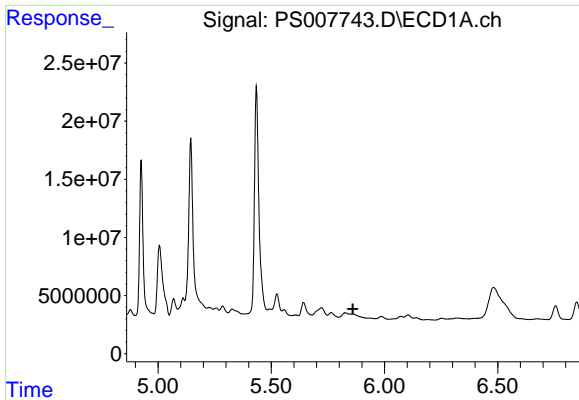
#4 2,4-DCAA

R.T.: 5.434 min
 Delta R.T.: 0.006 min
 Response: 258439608
 Conc: 187.66 ng/ml



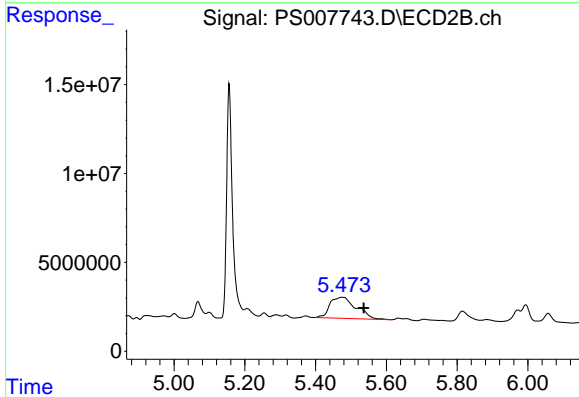
#4 2,4-DCAA

R.T.: 0.000 min
 Exp R.T.: 5.153 min
 Response: 0
 Conc: N.D.

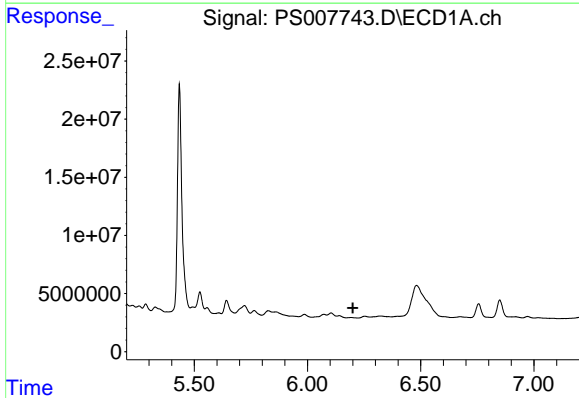


#7 MCPA
 R.T.: 0.000 min
 Exp R.T. : 5.860 min
 Response: 0
 Conc: N.D.

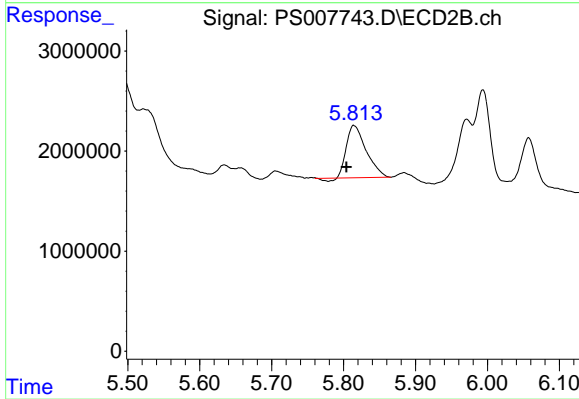
Instrument :
 ECD_S
 ClientSampled :



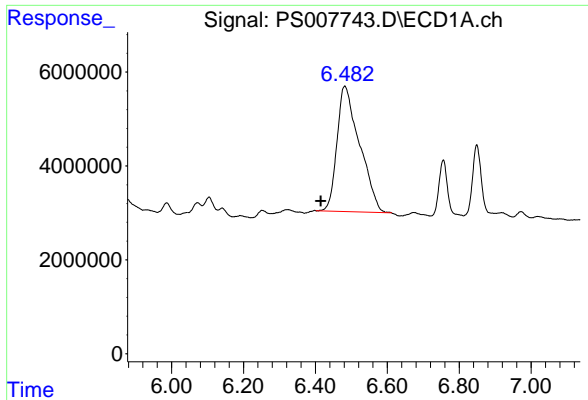
#7 MCPA
 R.T.: 5.474 min
 Delta R.T.: -0.061 min
 Response: 61671666
 Conc: 20.52 ug/ml



#8 DICHLORPROP
 R.T.: 0.000 min
 Exp R.T. : 6.200 min
 Response: 0
 Conc: N.D.

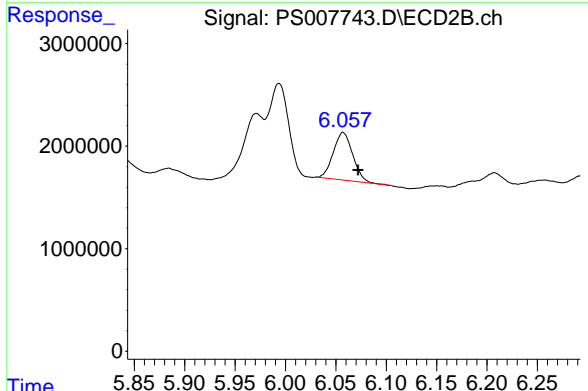


#8 DICHLORPROP
 R.T.: 5.815 min
 Delta R.T.: 0.011 min
 Response: 9804020
 Conc: 14.95 ng/ml

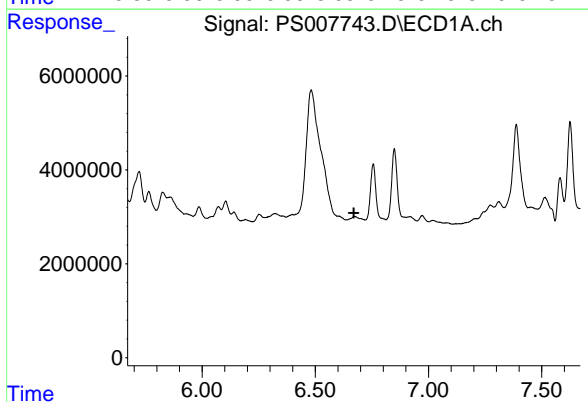


#9 2,4-D
 R.T.: 6.482 min
 Delta R.T.: 0.067 min
 Response: 116312706
 Conc: 82.93 ng/ml

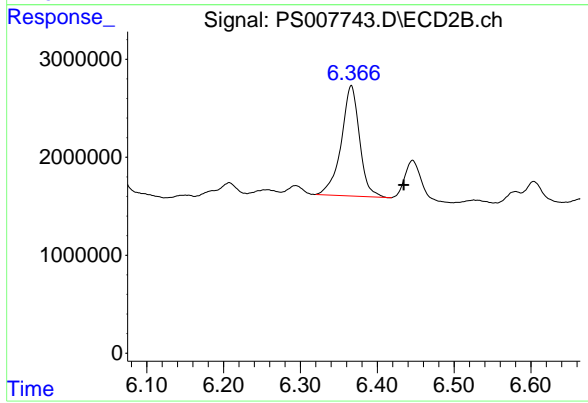
Instrument :
 ECD_S
 ClientSampleId :



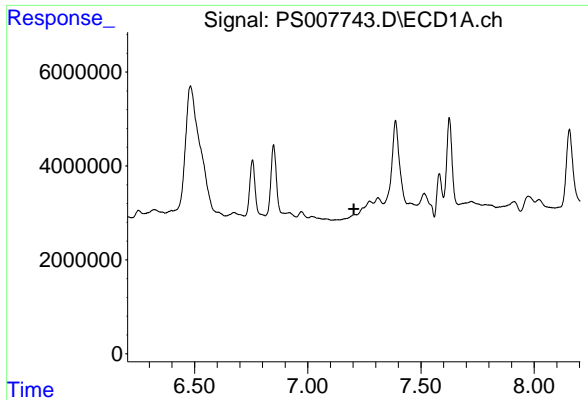
#9 2,4-D
 R.T.: 6.057 min
 Delta R.T.: -0.015 min
 Response: 6266543
 Conc: 7.77 ng/ml



#10 Pentachlorophenol
 R.T.: 0.000 min
 Exp R.T. : 6.671 min
 Response: 0
 Conc: N.D.



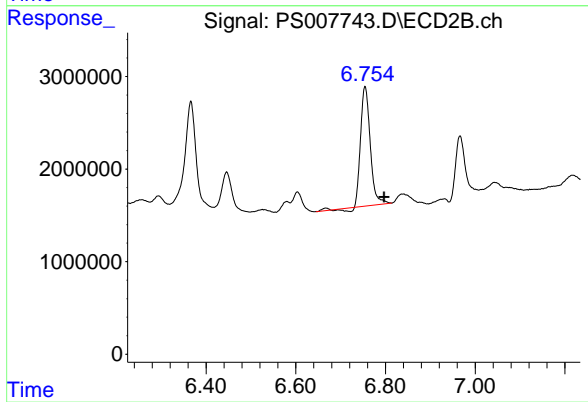
#10 Pentachlorophenol
 R.T.: 6.366 min
 Delta R.T.: -0.069 min
 Response: 18638697
 Conc: 1.90 ng/ml



#11 2,4,5-TP (SILVEX)

R.T.: 0.000 min
Exp R.T.: 7.203 min
Response: 0
Conc: N.D.

Instrument :
ECD_S
ClientSampleId :



#11 2,4,5-TP (SILVEX)

R.T.: 6.755 min
Delta R.T.: -0.042 min
Response: 19202191
Conc: 4.90 ng/ml