

Data Path : Z:\pestpcbsrv\HPCHEM1\ECD_S\Data\PS111919\
 Data File : PS007749.D
 Signal(s) : Signal #1: ECD1A.ch Signal #2: ECD2B.ch
 Acq On : 19 Nov 2019 13:04
 Operator : SM\AJ
 Sample : I.BLK
 Misc :
 ALS Vial : 2 Sample Multiplier: 1

Instrument :
 ECD_S
 ClientSampleId :

Integration File signal 1: autoint1.e
 Integration File signal 2: autoint2.e
 Quant Time: Nov 19 13:56:12 2019
 Quant Method : Z:\pestpcbsrv\HPCHEM1\ECD_S\Method\PS110619.M
 Quant Title : 8080.M
 QLast Update : Wed Nov 06 02:45:11 2019
 Response via : Initial Calibration
 Integrator: ChemStation

Volume Inj. : 2 µl
 Signal #1 Phase : Rtx-CLPesticides Signal #2 Phase: Rtx-CLPesticides2
 Signal #1 Info : 30M x 0.32mm x0.5 Signal #2 Info : 30M x 0.32mm x 0.25µm

Compound	RT#1	RT#2	Resp#1	Resp#2	ng/ml	ng/ml

System Monitoring Compounds						
4) S 2,4-DCAA	5.430	0.000	618.6E6	0	449.161	N.D. #
Target Compounds						
5) T DICAMBA	0.000	5.292	0	28086206	N.D.	10.613
6) T MCP	0.000	5.379	0	105.3E6	N.D.	54.226
9) T 2,4-D	6.422	0.000	342.6E6	0	244.249	N.D. #

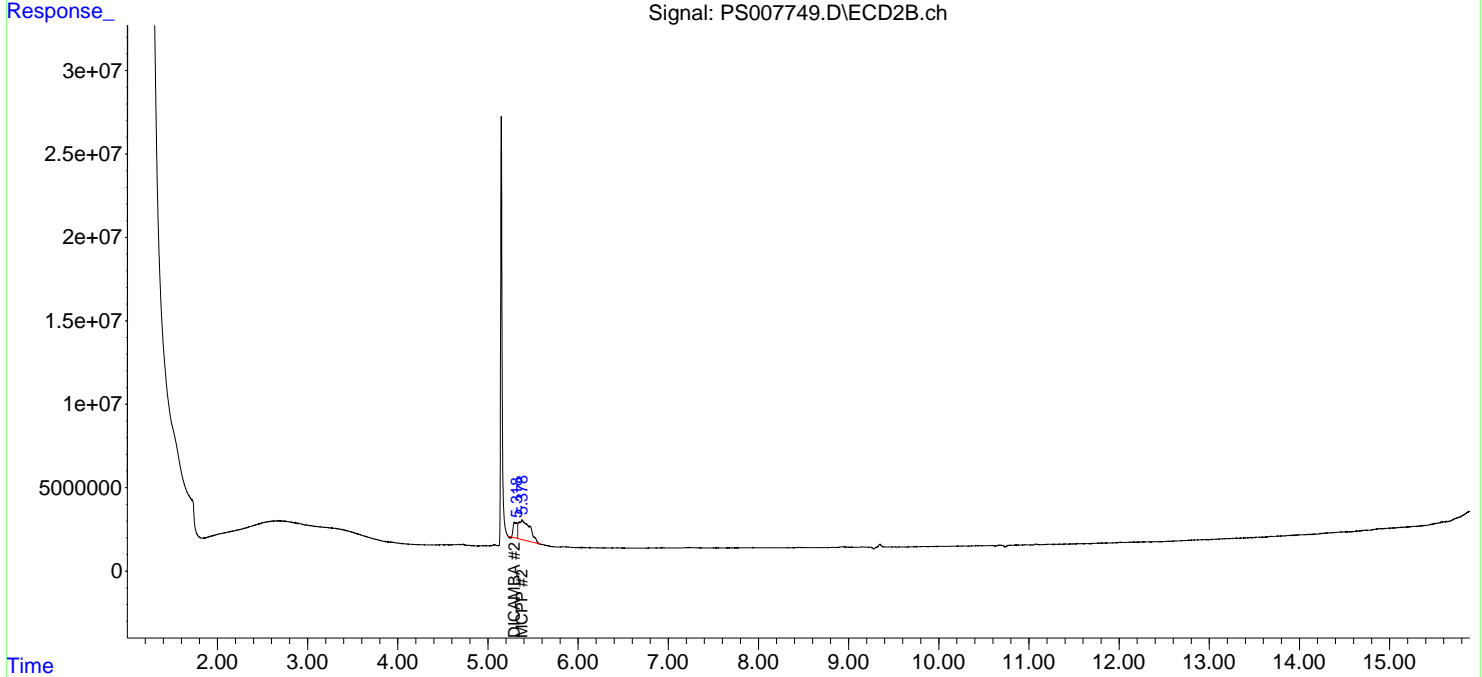
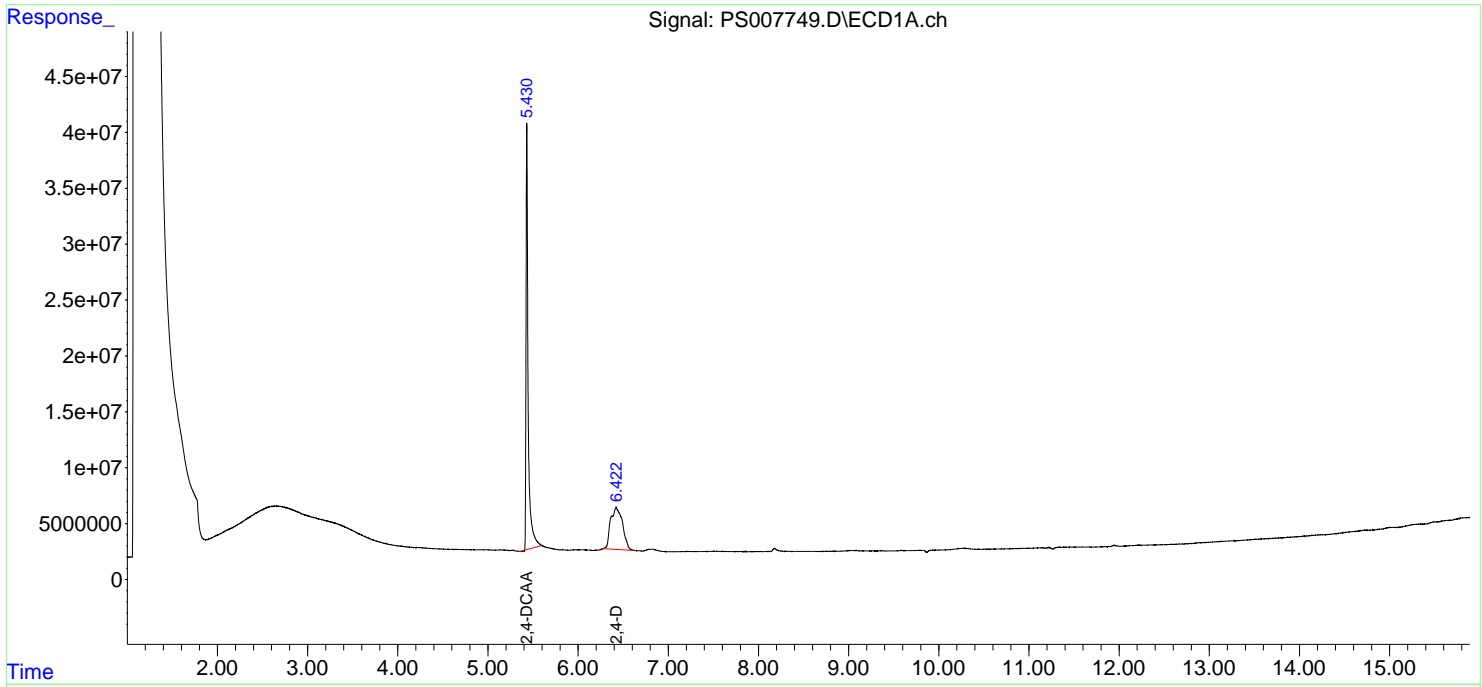
(f)=RT Delta > 1/2 Window (#)=Amounts differ by > 25% (m)=manual int.

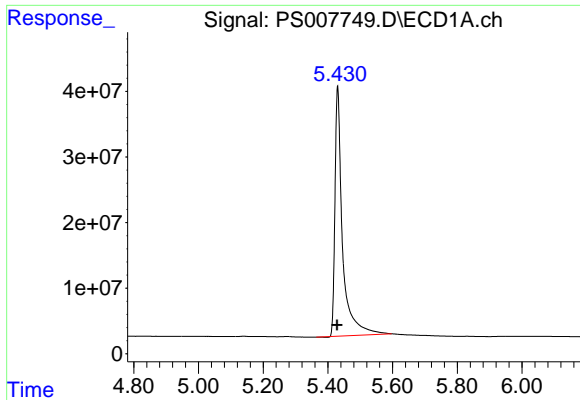
Data Path : Z:\pestpcbsrv\HPCHEM1\ECD_S\Data\PS111919\
Data File : PS007749.D
Signal(s) : Signal #1: ECD1A.ch Signal #2: ECD2B.ch
Acq On : 19 Nov 2019 13:04
Operator : SM\AJ
Sample : I.BLK
Misc :
ALS Vial : 2 Sample Multiplier: 1

Instrument :
ECD_S
ClientSampleId :

Integration File signal 1: autoint1.e
Integration File signal 2: autoint2.e
Quant Time: Nov 19 13:56:12 2019
Quant Method : Z:\pestpcbsrv\HPCHEM1\ECD_S\Method\PS110619.M
Quant Title : 8080.M
QLast Update : Wed Nov 06 02:45:11 2019
Response via : Initial Calibration
Integrator: ChemStation

Volume Inj. : 2 µl
Signal #1 Phase : Rtx-CLPesticides Signal #2 Phase: Rtx-CLPesticides2
Signal #1 Info : 30M x 0.32mm x 0.5 Signal #2 Info : 30M x 0.32mm x 0.25µm

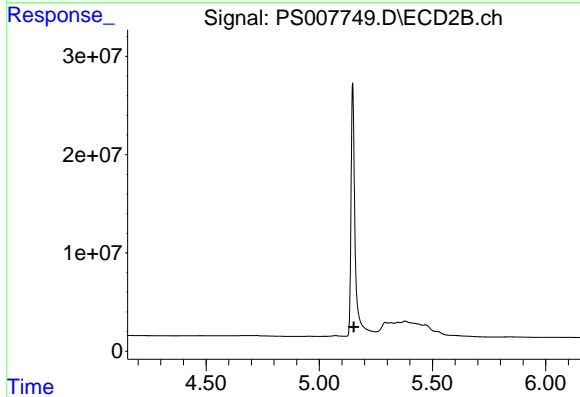




#4 2,4-DCAA

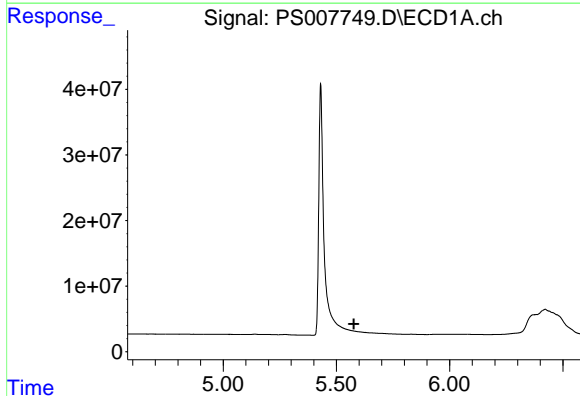
R.T.: 5.430 min
 Delta R.T.: 0.002 min
 Response: 618577705
 Conc: 449.16 ng/ml

Instrument :
 ECD_S
 ClientSampled :



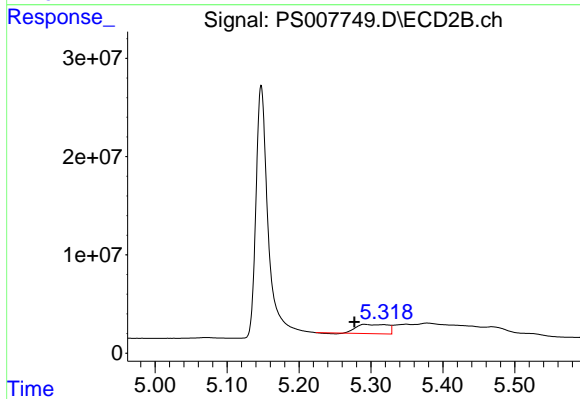
#4 2,4-DCAA

R.T.: 0.000 min
 Exp R.T. : 5.153 min
 Response: 0
 Conc: N.D.



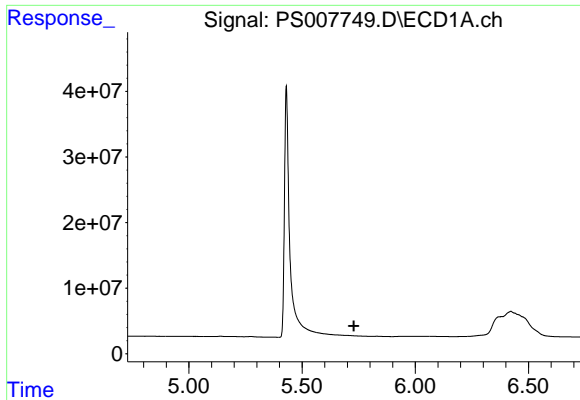
#5 DICAMBA

R.T.: 0.000 min
 Exp R.T. : 5.577 min
 Response: 0
 Conc: N.D.



#5 DICAMBA

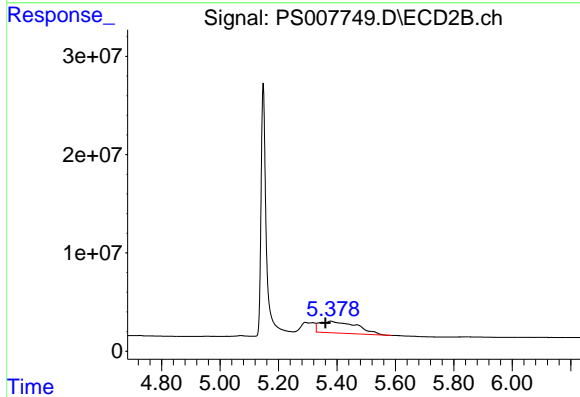
R.T.: 5.292 min
 Delta R.T.: 0.015 min
 Response: 28086206
 Conc: 10.61 ng/ml



#6 MCP

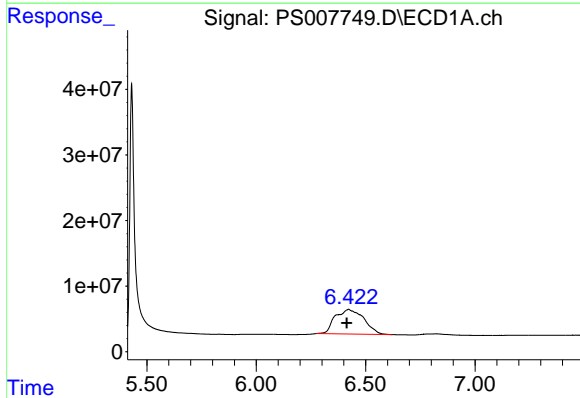
R.T.: 0.000 min
 Exp R.T.: 5.729 min
 Response: 0
 Conc: N.D.

Instrument :
 ECD_S
 ClientSampled :



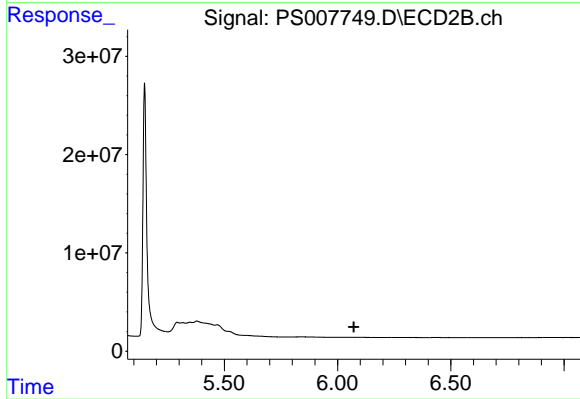
#6 MCP

R.T.: 5.379 min
 Delta R.T.: 0.017 min
 Response: 105344961
 Conc: 54.23 ug/ml



#9 2,4-D

R.T.: 6.422 min
 Delta R.T.: 0.008 min
 Response: 342571558
 Conc: 244.25 ng/ml



#9 2,4-D

R.T.: 0.000 min
 Exp R.T.: 6.072 min
 Response: 0
 Conc: N.D.