

Data Path : Z:\pestpcbsrv\HPCHEM1\ECD_S\Data\PS111920\
 Data File : PS013263.D
 Signal(s) : Signal #1: ECD1A.ch Signal #2: ECD2B.ch
 Acq On : 19 Nov 2020 17:44
 Operator : DD\AJ
 Sample : PB133119TB
 Misc :
 ALS Vial : 6 Sample Multiplier: 1

Instrument :
 ECD_S
 ClientSampleId :

Integration File signal 1: autoint1.e
 Integration File signal 2: autoint2.e
 Quant Time: Nov 20 00:53:58 2020
 Quant Method : Z:\pestpcbsrv\HPCHEM1\ECD_S\Method\PS110220.M
 Quant Title : 8080.M
 QLast Update : Tue Nov 03 03:59:48 2020
 Response via : Initial Calibration
 Integrator: ChemStation

Volume Inj. : 2 µl
 Signal #1 Phase : Rtx-CLPesticides Signal #2 Phase: Rtx-CLPesticides2
 Signal #1 Info : 30M x 0.32mm x0.5 Signal #2 Info : 30M x 0.32mm x 0.25µm

Compound	RT#1	RT#2	Resp#1	Resp#2	ng/ml	ng/ml

System Monitoring Compounds						
4) S 2,4-DCAA	7.209	6.912	310.4E6	160.9E6	347.176	413.436
Target Compounds						
1) T Dalapon	2.993	2.590	77331738	160.4E6	73.092	302.589 #
2) T 3,5-DICHL...	0.000	6.043	0	1668505	N.D.	2.712
3) T 4-Nitroph...	7.095f	0.000	6922696	0	16.232	N.D. #
5) T DICAMBA	7.385	7.044	14470982	7099865	4.052	4.277
6) T MCPP	7.616f	7.120f	6231270	2513350	2.341	1.899
7) T MCPA	7.701	0.000	120.2E6	0	31.489	N.D. #
8) T DICHLORPROP	0.000	7.740	0	19644562	N.D.	43.952
10) T Pentachlo...	8.682f	0.000	10847069	0	<MDL	N.D. #
11) T 2,4,5-TP ...	0.000	8.739f	0	37804311	N.D.	16.313
14) T DINOSEB	11.140	10.045f	12223157	7690932	2.964	4.562 #
15) T Picloram	10.970	0.000	26114838	0	3.971	N.D. #

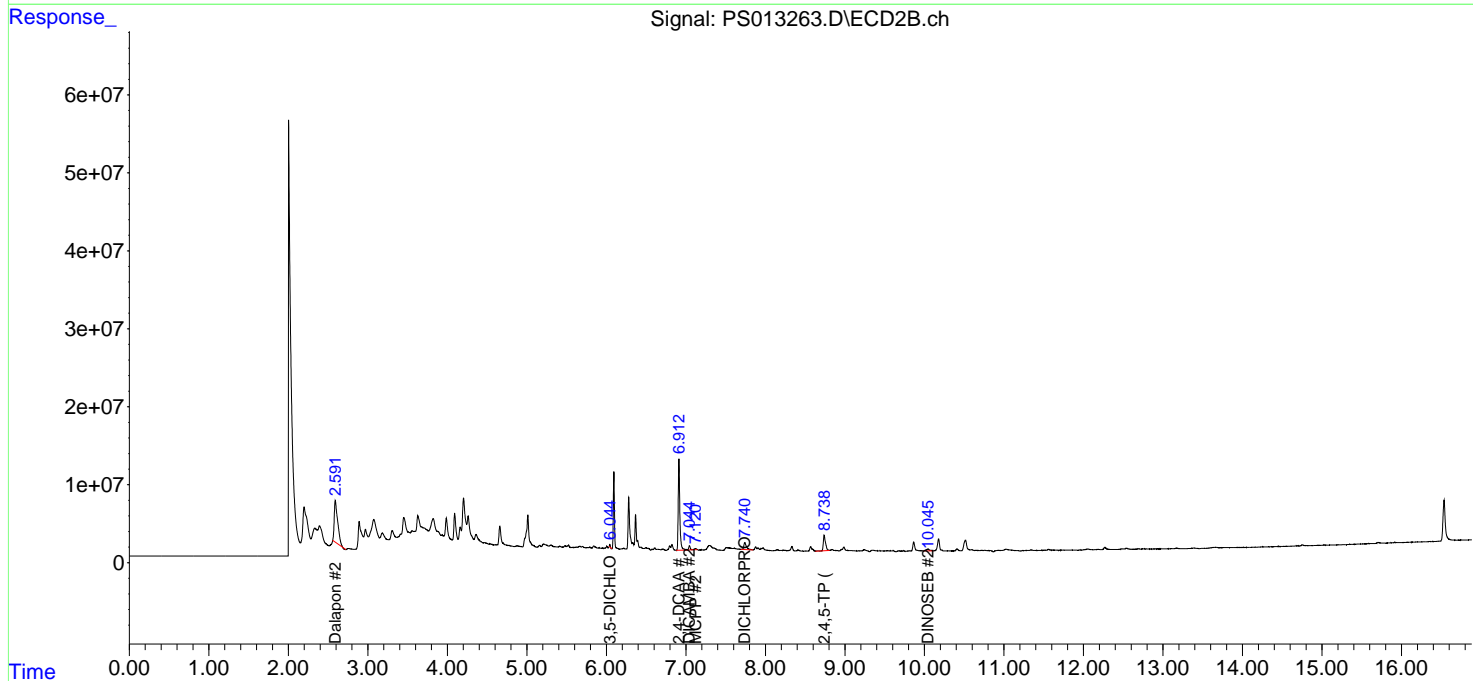
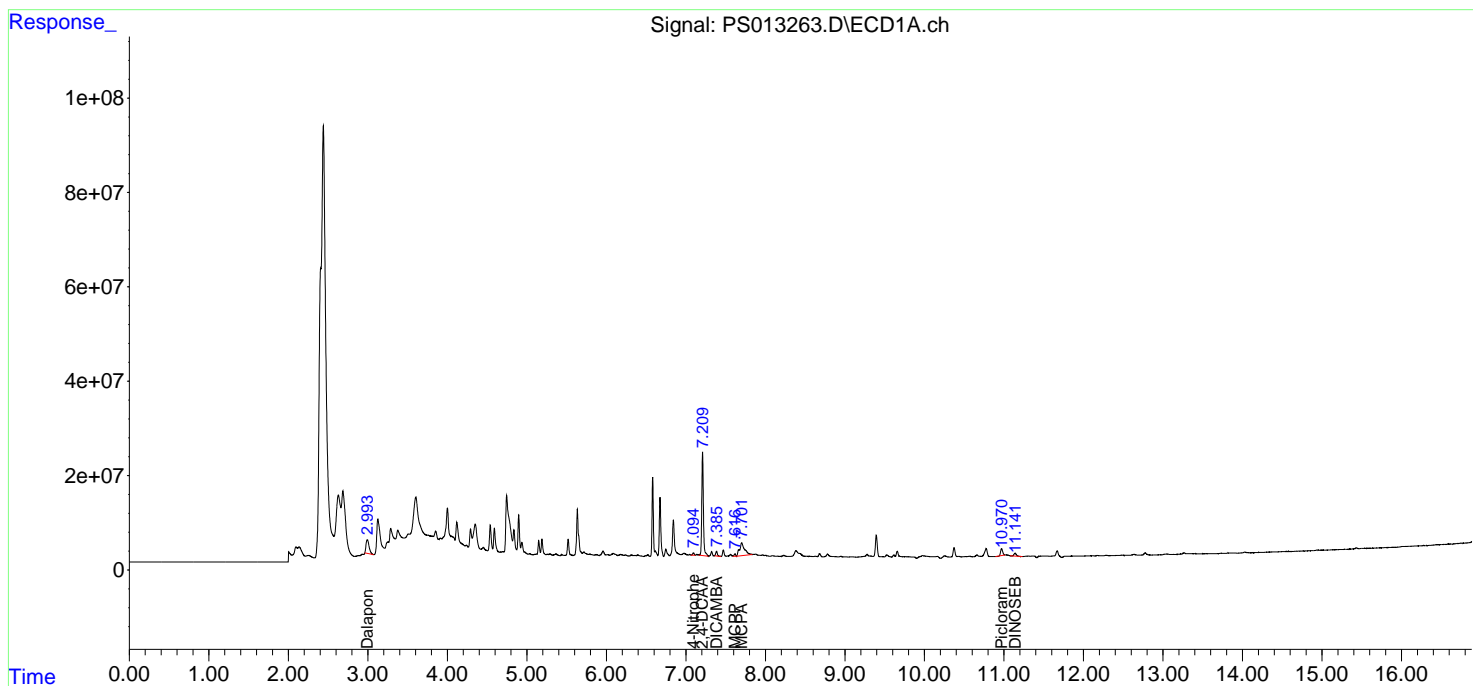
(f)=RT Delta > 1/2 Window (#)=Amounts differ by > 25% (m)=manual int.

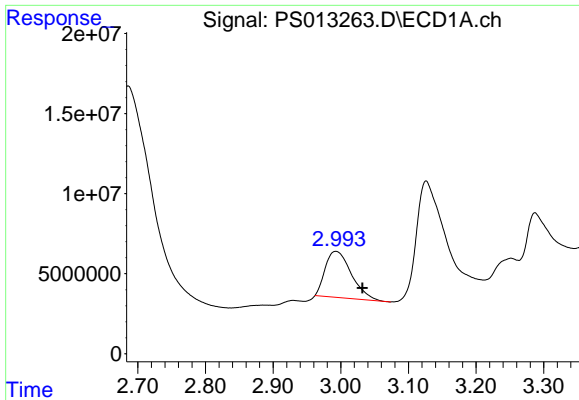
Data Path : Z:\pestpcbsrv\HPCHEM1\ECD_S\Data\PS111920\
 Data File : PS013263.D
 Signal(s) : Signal #1: ECD1A.ch Signal #2: ECD2B.ch
 Acq On : 19 Nov 2020 17:44
 Operator : DD\AJ
 Sample : PB133119TB
 Misc :
 ALS Vial : 6 Sample Multiplier: 1

Instrument :
 ECD_S
 ClientSampled :

Integration File signal 1: autoint1.e
 Integration File signal 2: autoint2.e
 Quant Time: Nov 20 00:53:58 2020
 Quant Method : Z:\pestpcbsrv\HPCHEM1\ECD_S\Method\PS110220.M
 Quant Title : 8080.M
 QLast Update : Tue Nov 03 03:59:48 2020
 Response via : Initial Calibration
 Integrator: ChemStation

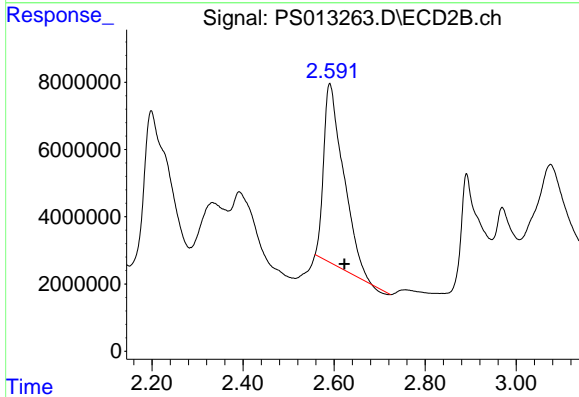
Volume Inj. : 2 µl
 Signal #1 Phase : Rtx-CLPesticides Signal #2 Phase: Rtx-CLPesticides2
 Signal #1 Info : 30M x 0.32mm x0.5 Signal #2 Info : 30M x 0.32mm x 0.25µm



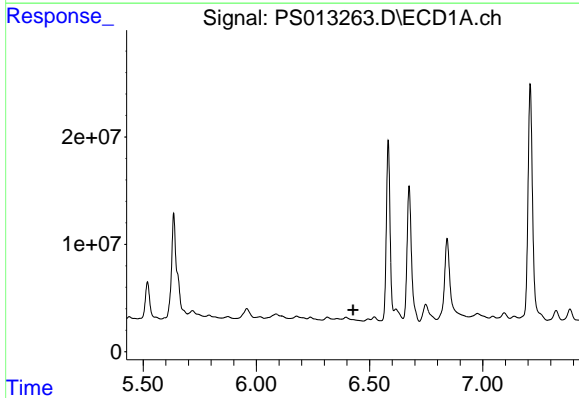


#1 Dalapon
 R.T.: 2.993 min
 Delta R.T.: -0.039 min
 Response: 77331738
 Conc: 73.09 ng/ml

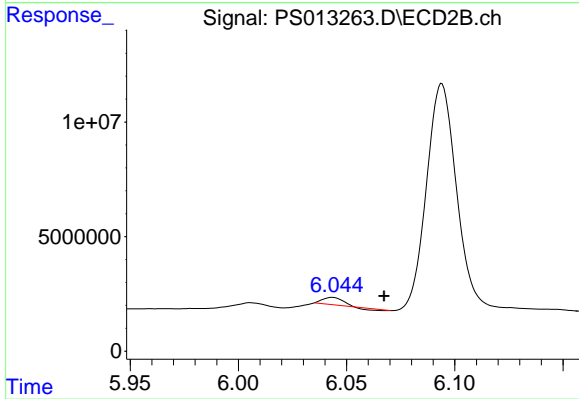
Instrument :
 ECD_S
 ClientSampled :



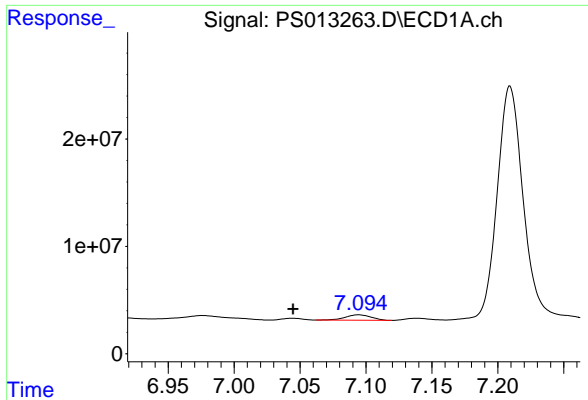
#1 Dalapon
 R.T.: 2.590 min
 Delta R.T.: -0.033 min
 Response: 160364510
 Conc: 302.59 ng/ml



#2 3,5-DICHLOROBENZOIC ACID
 R.T.: 0.000 min
 Exp R.T. : 6.427 min
 Response: 0
 Conc: N.D.

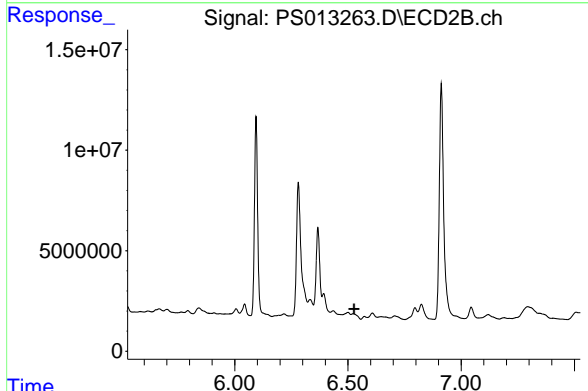


#2 3,5-DICHLOROBENZOIC ACID
 R.T.: 6.043 min
 Delta R.T.: -0.024 min
 Response: 1668505
 Conc: 2.71 ng/ml

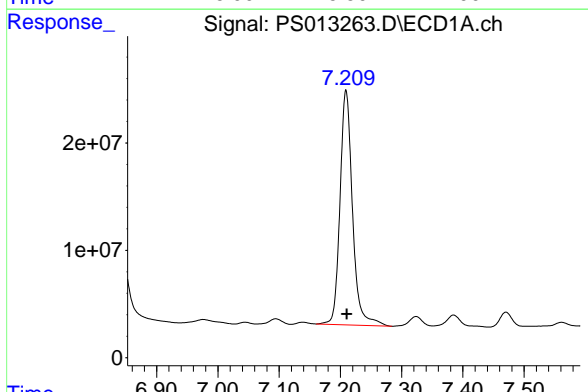


#3 4-Nitrophenol
 R.T.: 7.095 min
 Delta R.T.: 0.050 min
 Response: 6922696
 Conc: 16.23 ng/ml

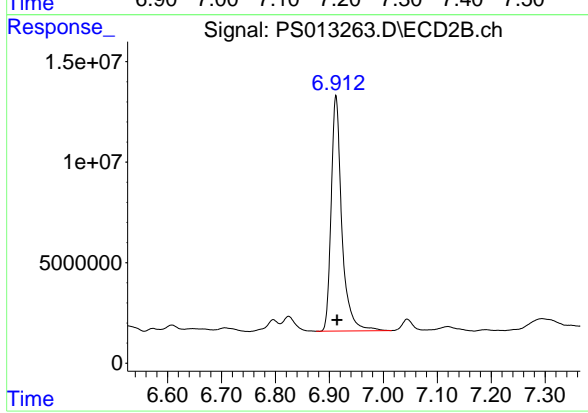
Instrument :
 ECD_S
 ClientSampleId :



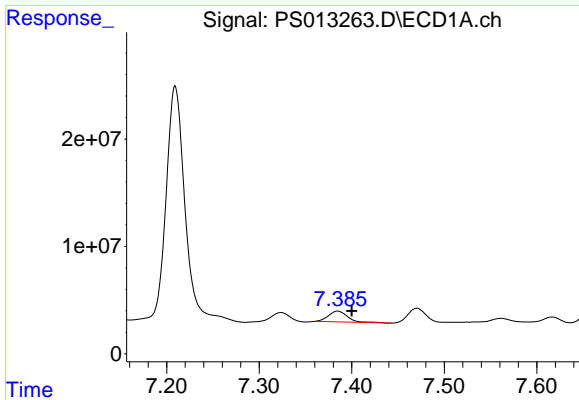
#3 4-Nitrophenol
 R.T.: 0.000 min
 Exp R.T. : 6.527 min
 Response: 0
 Conc: N.D.



#4 2,4-DCAA
 R.T.: 7.209 min
 Delta R.T.: -0.001 min
 Response: 310350577
 Conc: 347.18 ng/ml

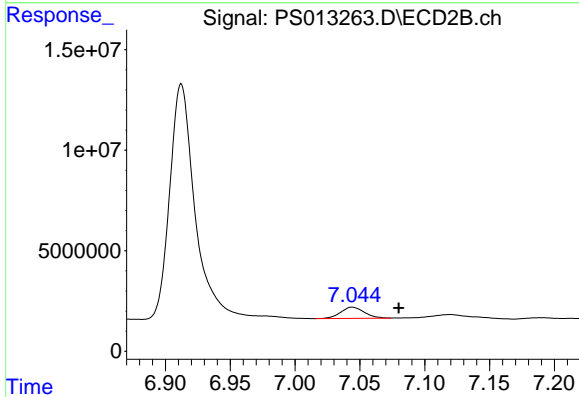


#4 2,4-DCAA
 R.T.: 6.912 min
 Delta R.T.: -0.002 min
 Response: 160863625
 Conc: 413.44 ng/ml

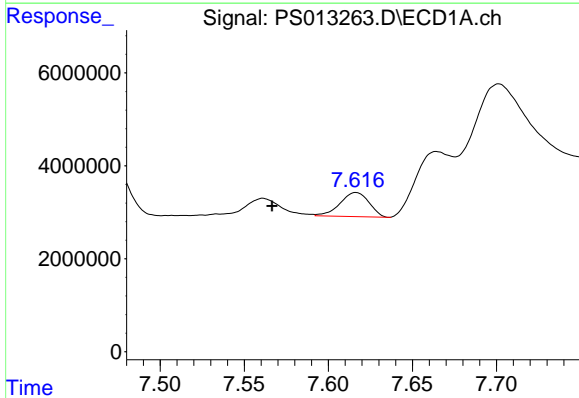


#5 DICAMBA
 R.T.: 7.385 min
 Delta R.T.: -0.015 min
 Response: 14470982
 Conc: 4.05 ng/ml

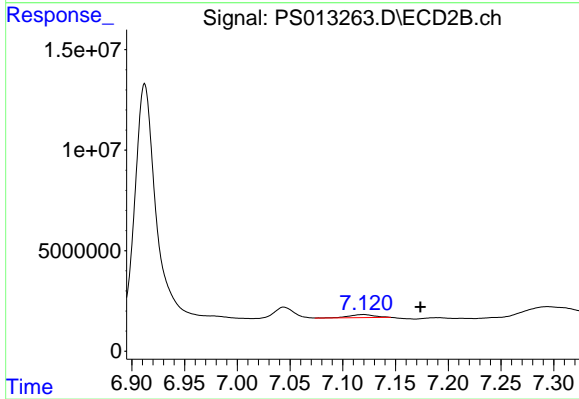
Instrument :
 ECD_S
 ClientSampleId :



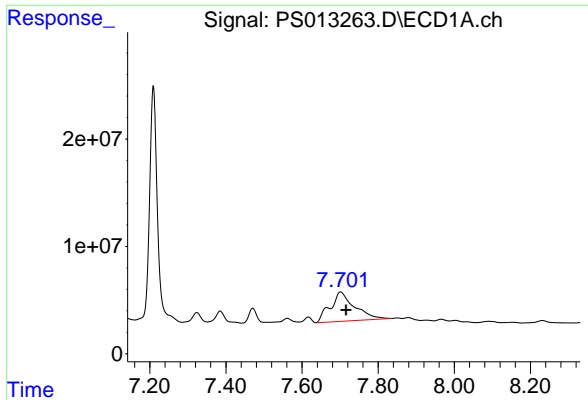
#5 DICAMBA
 R.T.: 7.044 min
 Delta R.T.: -0.036 min
 Response: 7099865
 Conc: 4.28 ng/ml



#6 MCPP
 R.T.: 7.616 min
 Delta R.T.: 0.050 min
 Response: 6231270
 Conc: 2.34 ug/ml

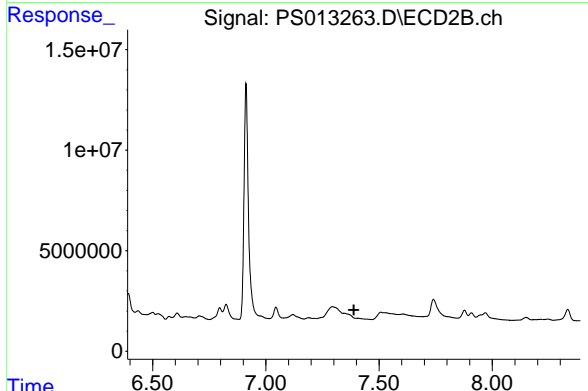


#6 MCPP
 R.T.: 7.120 min
 Delta R.T.: -0.054 min
 Response: 2513350
 Conc: 1.90 ug/ml

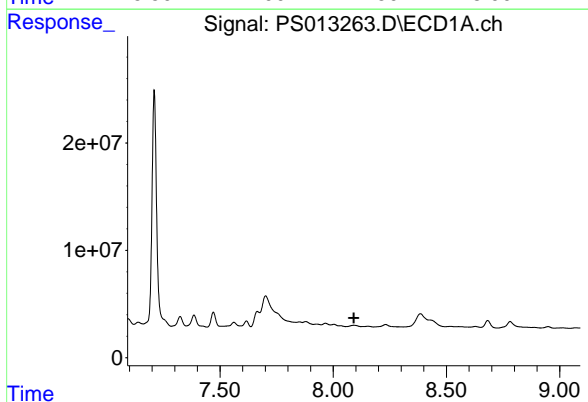


#7 MCPA
 R.T.: 7.701 min
 Delta R.T.: -0.015 min
 Response: 120239967
 Conc: 31.49 ug/ml

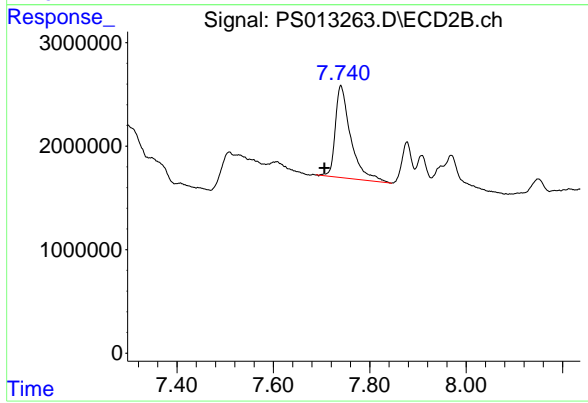
Instrument :
 ECD_S
 ClientSampled :



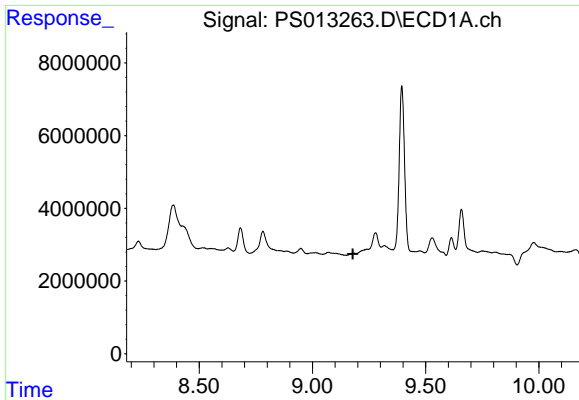
#7 MCPA
 R.T.: 0.000 min
 Exp R.T. : 7.389 min
 Response: 0
 Conc: N.D.



#8 DICHLORPROP
 R.T.: 0.000 min
 Exp R.T. : 8.092 min
 Response: 0
 Conc: N.D.

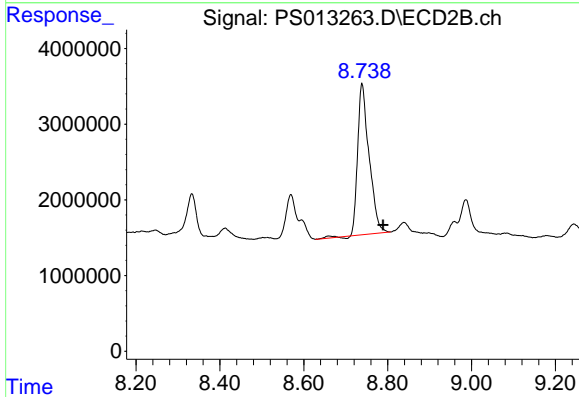


#8 DICHLORPROP
 R.T.: 7.740 min
 Delta R.T.: 0.034 min
 Response: 19644562
 Conc: 43.95 ng/ml

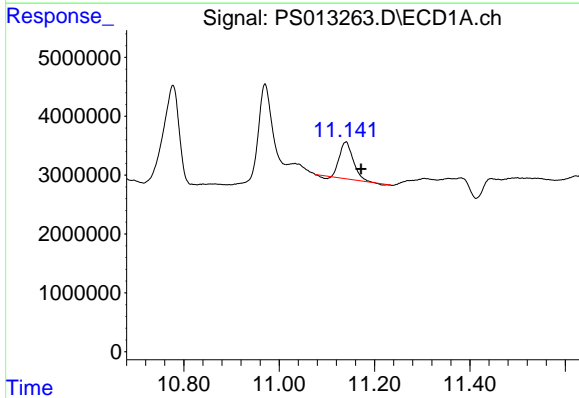


#11 2,4,5-TP (SILVEX)
 R.T.: 0.000 min
 Exp R.T.: 9.179 min
 Response: 0
 Conc: N.D.

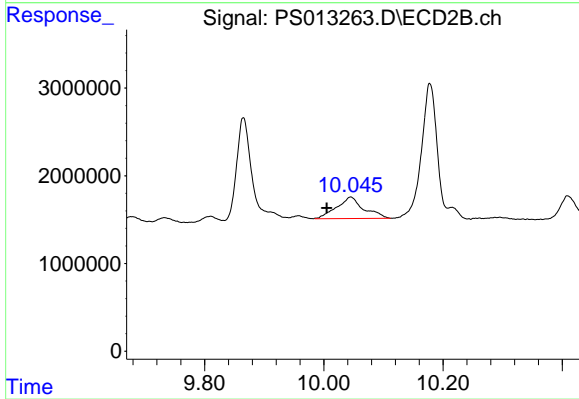
Instrument :
 ECD_S
 ClientSampled :



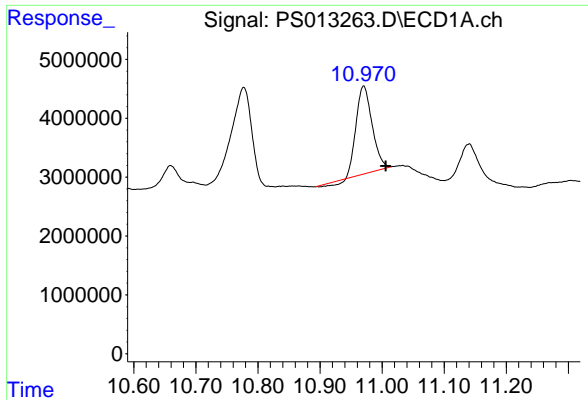
#11 2,4,5-TP (SILVEX)
 R.T.: 8.739 min
 Delta R.T.: -0.050 min
 Response: 37804311
 Conc: 16.31 ng/ml



#14 DINOSEB
 R.T.: 11.140 min
 Delta R.T.: -0.032 min
 Response: 12223157
 Conc: 2.96 ng/ml



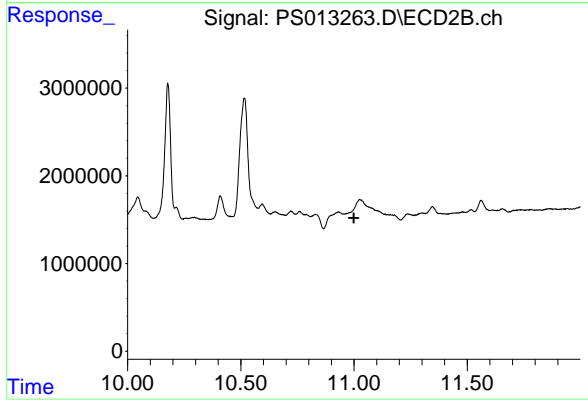
#14 DINOSEB
 R.T.: 10.045 min
 Delta R.T.: 0.040 min
 Response: 7690932
 Conc: 4.56 ng/ml



#15 Picloram

R.T.: 10.970 min
Delta R.T.: -0.036 min
Response: 26114838
Conc: 3.97 ng/ml

Instrument :
ECD_S
ClientSampleId :



#15 Picloram

R.T.: 0.000 min
Exp R.T. : 10.999 min
Response: 0
Conc: N.D.