

Data Path : Z:\pestpcbsrv\HPCHEM1\ECD_S\Data\PS111921\
 Data File : PS017464.D
 Signal(s) : Signal #1: ECD1A.ch Signal #2: ECD2B.ch
 Acq On : 19 Nov 2021 18:27
 Operator : AJ\MA
 Sample : PB140909BL
 Misc :
 ALS Vial : 10 Sample Multiplier: 1

Instrument :
 ECD_S
 ClientSampleId :

Integration File signal 1: autoint1.e
 Integration File signal 2: autoint2.e
 Quant Time: Nov 19 22:54:10 2021
 Quant Method : Z:\pestpcbsrv\HPCHEM1\ECD_S\Method\PS111821.M
 Quant Title : 8080.M
 QLast Update : Fri Nov 19 21:46:29 2021
 Response via : Initial Calibration
 Integrator: ChemStation

Volume Inj. : 2 µl
 Signal #1 Phase : Rtx-CLPesticides Signal #2 Phase: Rtx-CLPesticides2
 Signal #1 Info : 30M x 0.32mm x0.5 Signal #2 Info : 30M x 0.32mm x 0.25µm

Compound	RT#1	RT#2	Resp#1	Resp#2	ng/ml	ng/ml

System Monitoring Compounds						
4) S 2,4-DCAA	7.150	6.738	723.8E6	301.5E6	460.356	508.788
Target Compounds						
1) T Dalapon	2.937f	2.445f	28207959	20098223	12.050	29.681 #
2) T 3,5-DICHL...	6.312f	5.961	4311039	66380892	1.966	74.463 #
3) T 4-Nitroph...	6.985	0.000	3452399	0	4.128	N.D. #
5) T DICAMBA	7.324	6.862	15322483	12046015	2.510	4.633 #
6) T MCPP	7.502	0.000	12570429	0	2.709	N.D. #
7) T MCPA	7.630	7.192	21310251	26635863	3.251	9.092 #
9) T 2,4-D	0.000	7.789	0	8122146	N.D.	10.413
10) T Pentachlo...	8.627f	0.000	35324011	0	1.673	N.D. #
11) T 2,4,5-TP ...	9.177f	8.626	18354097	10704258	2.203	3.019 #
12) T 2,4,5-T	9.414	0.000	3442473	0	<MDL	N.D. #
13) T 2,4-DB	9.925	0.000	27404185	0	16.106	N.D. #
14) T DINOSEB	11.067	9.805	175.7E6	13120457	28.206	5.565 #
15) T Picloram	10.946	0.000	13855498	0	1.136	N.D. #
16) T DCPA	11.380	0.000	3327216	0	<MDL	N.D. #

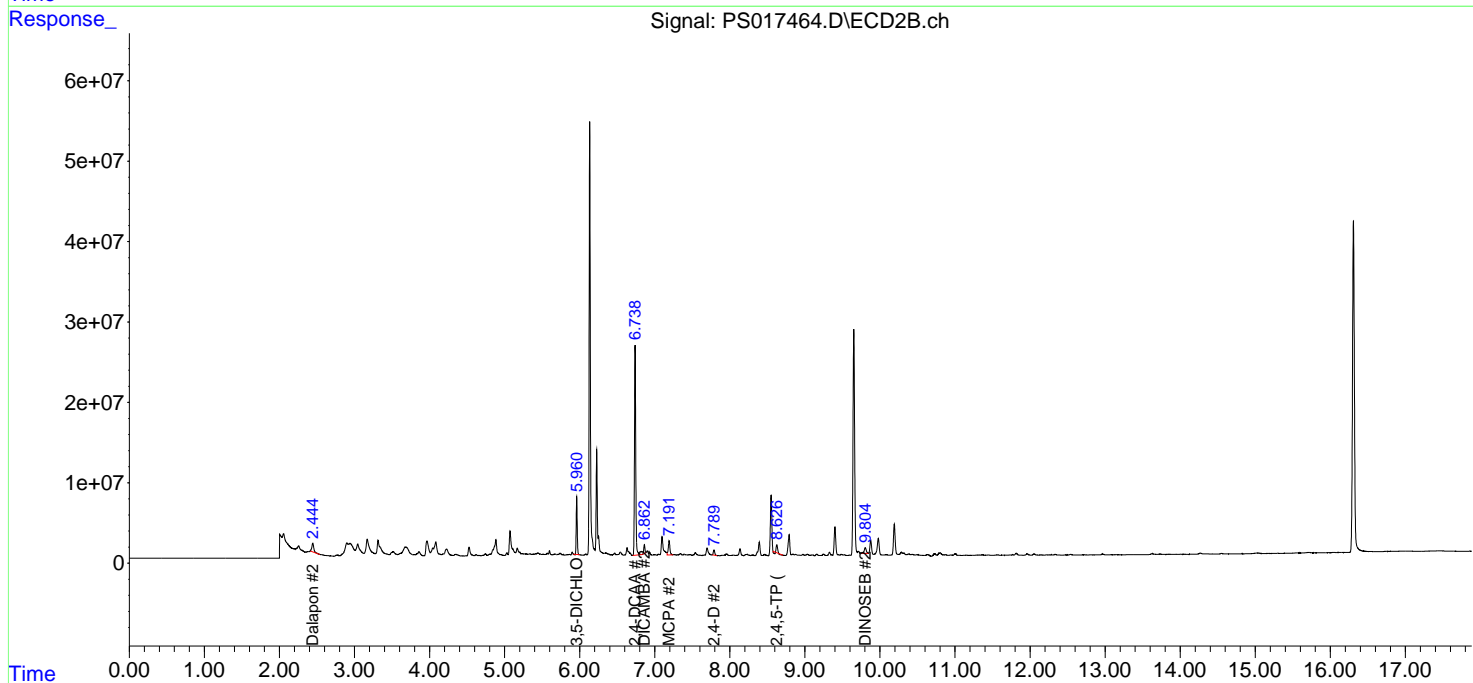
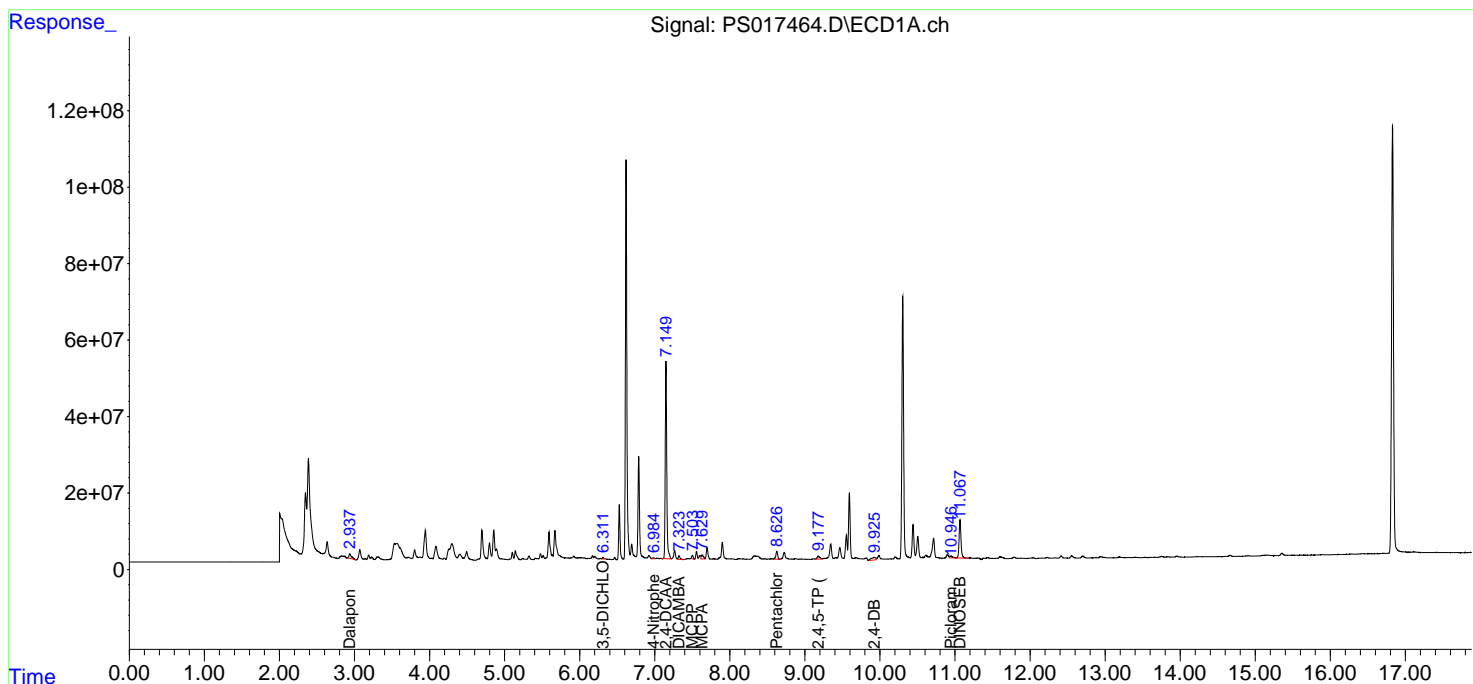
(f)=RT Delta > 1/2 Window (#)=Amounts differ by > 25% (m)=manual int.

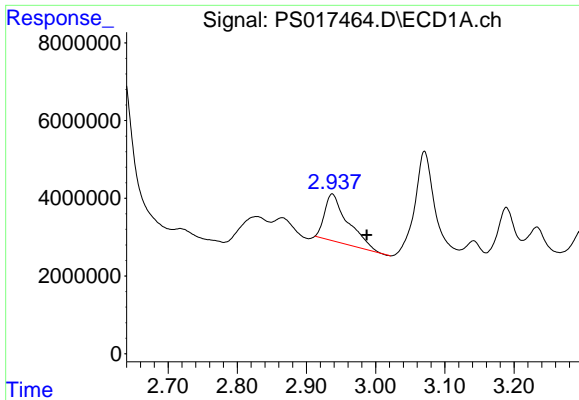
Data Path : Z:\pestpcbsrv\HPCHEM1\ECD_S\Data\PS111921\
 Data File : PS017464.D
 Signal(s) : Signal #1: ECD1A.ch Signal #2: ECD2B.ch
 Acq On : 19 Nov 2021 18:27
 Operator : AJ\MA
 Sample : PB140909BL
 Misc :
 ALS Vial : 10 Sample Multiplier: 1

Instrument :
 ECD_S
 ClientSampleId :

Integration File signal 1: autoint1.e
 Integration File signal 2: autoint2.e
 Quant Time: Nov 19 22:54:10 2021
 Quant Method : Z:\pestpcbsrv\HPCHEM1\ECD_S\Method\PS111821.M
 Quant Title : 8080.M
 QLast Update : Fri Nov 19 21:46:29 2021
 Response via : Initial Calibration
 Integrator: ChemStation

Volume Inj. : 2 µl
 Signal #1 Phase : Rtx-CLPesticides Signal #2 Phase: Rtx-CLPesticides2
 Signal #1 Info : 30M x 0.32mm x 0.5 Signal #2 Info : 30M x 0.32mm x 0.25µm

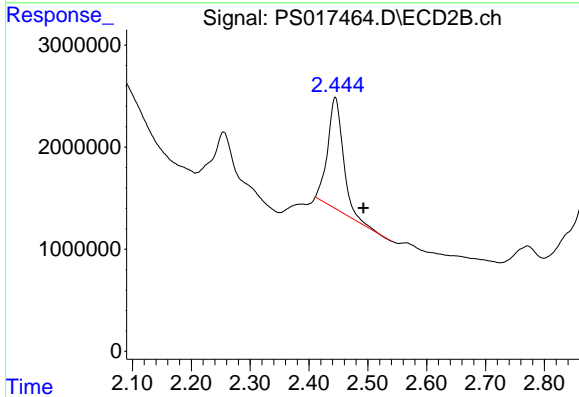




#1 Dalapon

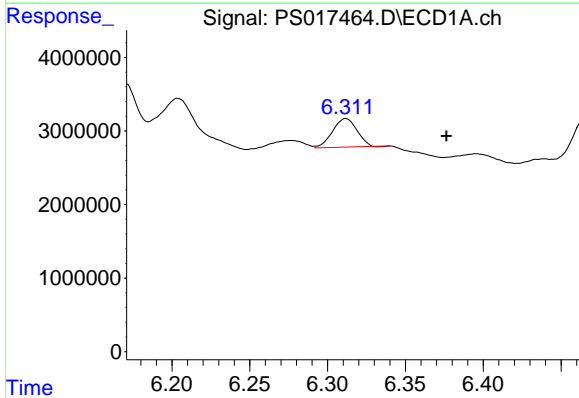
R.T.: 2.937 min
 Delta R.T.: -0.050 min
 Response: 28207959
 Conc: 12.05 ng/ml

Instrument :
 ECD_S
 ClientSampleId :



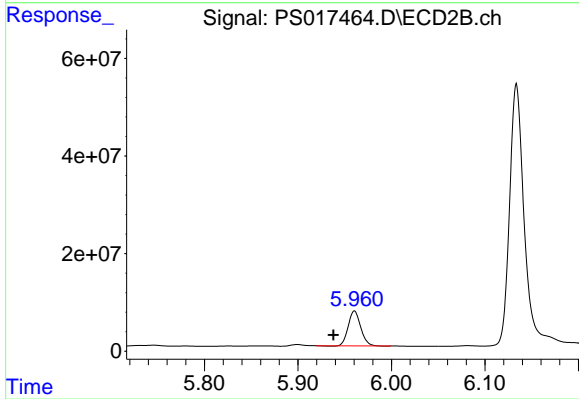
#1 Dalapon

R.T.: 2.445 min
 Delta R.T.: -0.048 min
 Response: 20098223
 Conc: 29.68 ng/ml



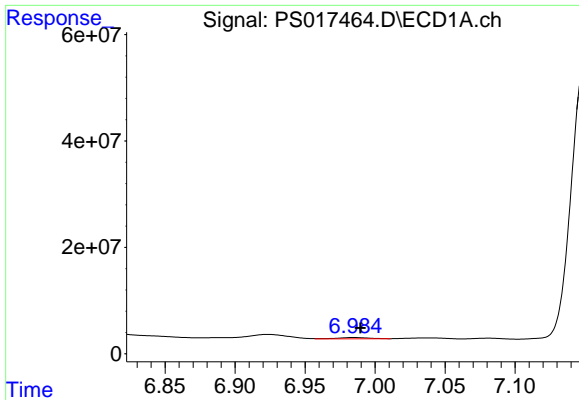
#2 3,5-DICHLOROBENZOIC ACID

R.T.: 6.312 min
 Delta R.T.: -0.065 min
 Response: 4311039
 Conc: 1.97 ng/ml



#2 3,5-DICHLOROBENZOIC ACID

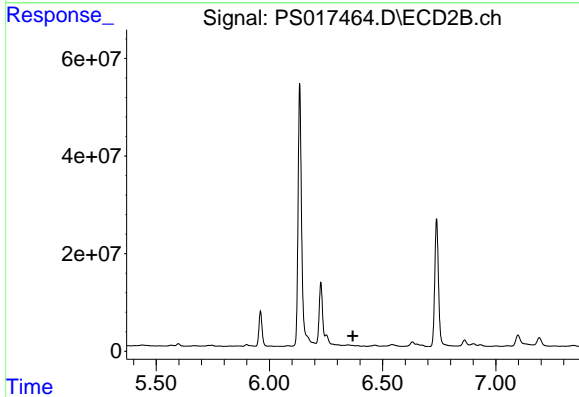
R.T.: 5.961 min
 Delta R.T.: 0.023 min
 Response: 66380892
 Conc: 74.46 ng/ml



#3 4-Nitrophenol

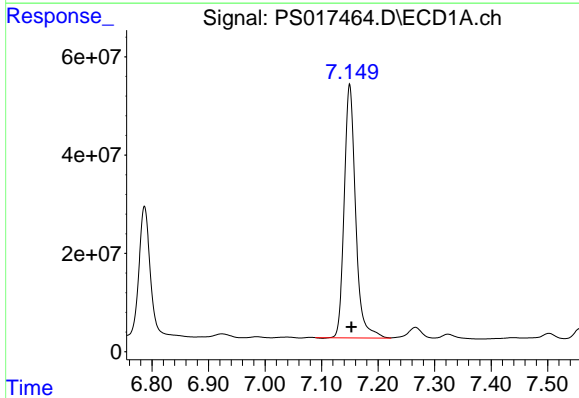
R.T.: 6.985 min
 Delta R.T.: -0.005 min
 Response: 3452399
 Conc: 4.13 ng/ml

Instrument :
 ECD_S
 ClientSampleId :



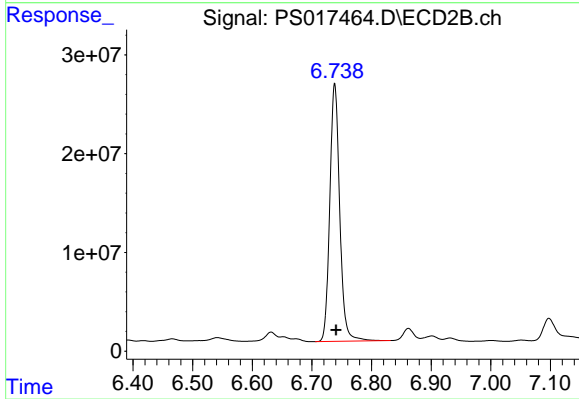
#3 4-Nitrophenol

R.T.: 0.000 min
 Exp R.T. : 6.369 min
 Response: 0
 Conc: N.D.



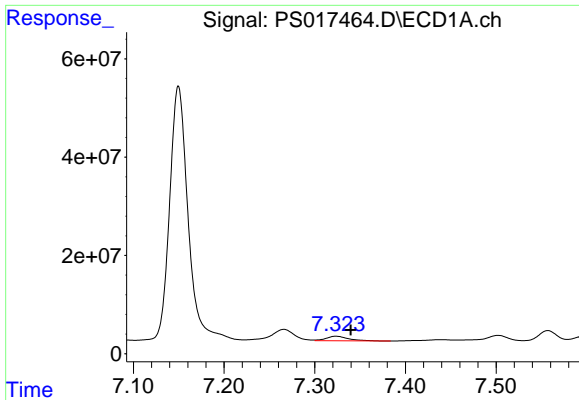
#4 2,4-DCAA

R.T.: 7.150 min
 Delta R.T.: -0.003 min
 Response: 723768514
 Conc: 460.36 ng/ml



#4 2,4-DCAA

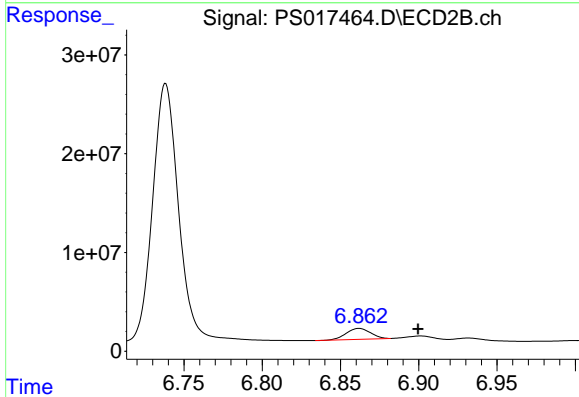
R.T.: 6.738 min
 Delta R.T.: -0.002 min
 Response: 301496421
 Conc: 508.79 ng/ml



#5 DICAMBA

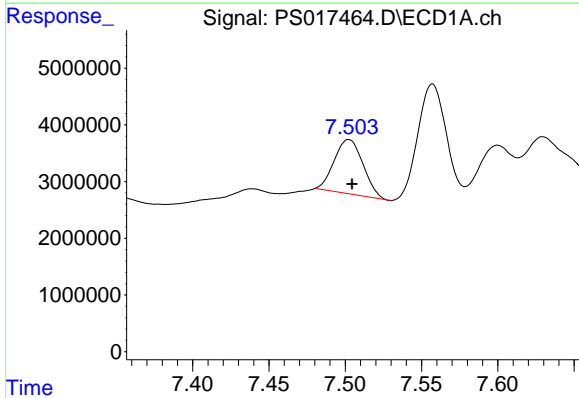
R.T.: 7.324 min
 Delta R.T.: -0.016 min
 Response: 15322483
 Conc: 2.51 ng/ml

Instrument :
 ECD_S
 ClientSampleId :



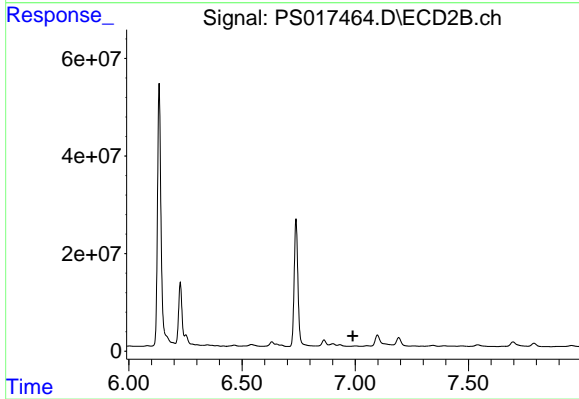
#5 DICAMBA

R.T.: 6.862 min
 Delta R.T.: -0.038 min
 Response: 12046015
 Conc: 4.63 ng/ml



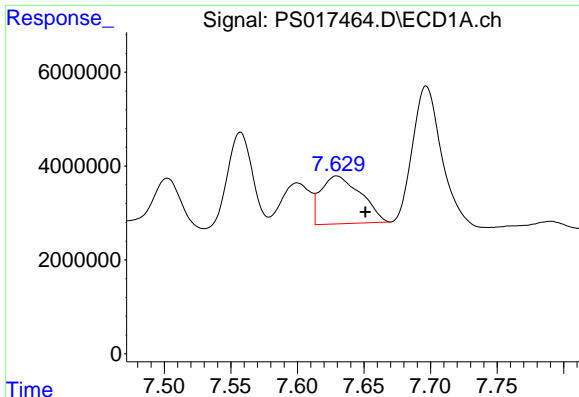
#6 MCPP

R.T.: 7.502 min
 Delta R.T.: -0.002 min
 Response: 12570429
 Conc: 2.71 ug/ml



#6 MCPP

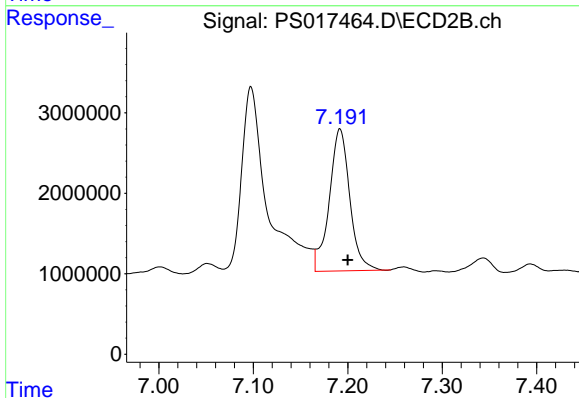
R.T.: 0.000 min
 Exp R.T. : 6.990 min
 Response: 0
 Conc: N.D.



#7 MCPA

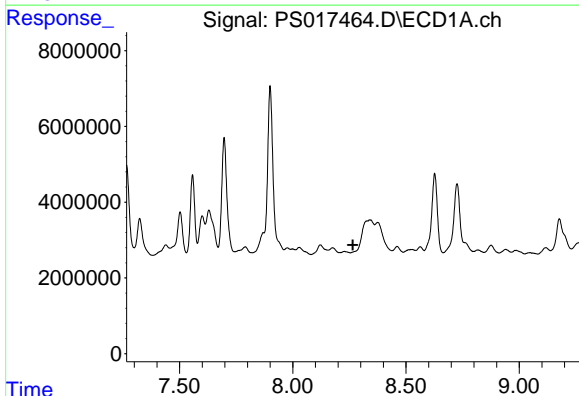
R.T.: 7.630 min
 Delta R.T.: -0.022 min
 Response: 21310251
 Conc: 3.25 ug/ml

Instrument :
 ECD_S
 ClientSampleId :



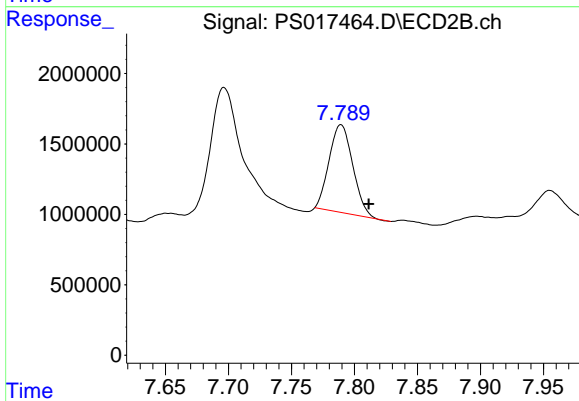
#7 MCPA

R.T.: 7.192 min
 Delta R.T.: -0.008 min
 Response: 26635863
 Conc: 9.09 ug/ml



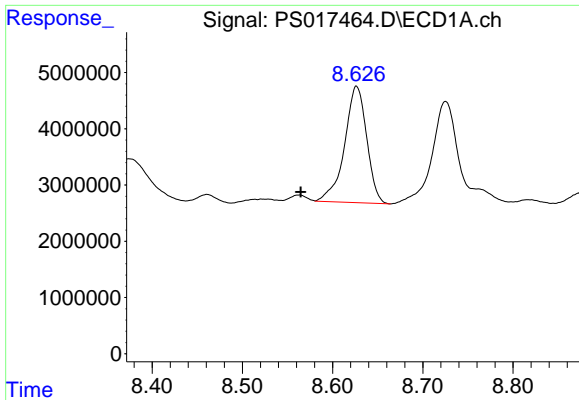
#9 2,4-D

R.T.: 0.000 min
 Exp R.T. : 8.266 min
 Response: 0
 Conc: N.D.



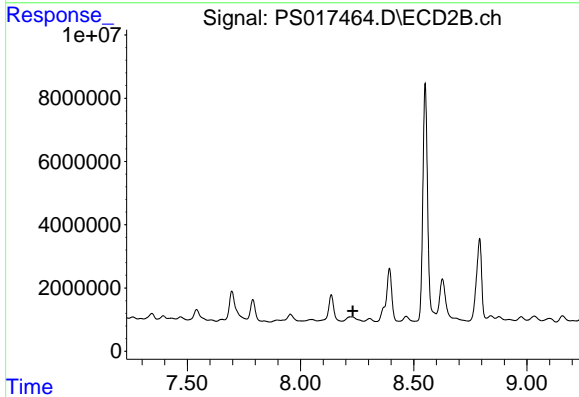
#9 2,4-D

R.T.: 7.789 min
 Delta R.T.: -0.022 min
 Response: 8122146
 Conc: 10.41 ng/ml

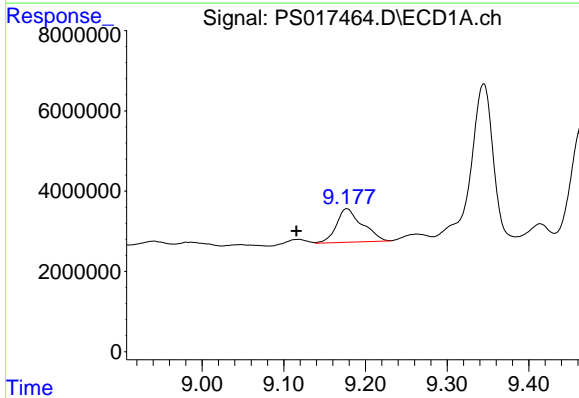


#10 Pentachlorophenol
 R.T.: 8.627 min
 Delta R.T.: 0.062 min
 Response: 35324011
 Conc: 1.67 ng/ml

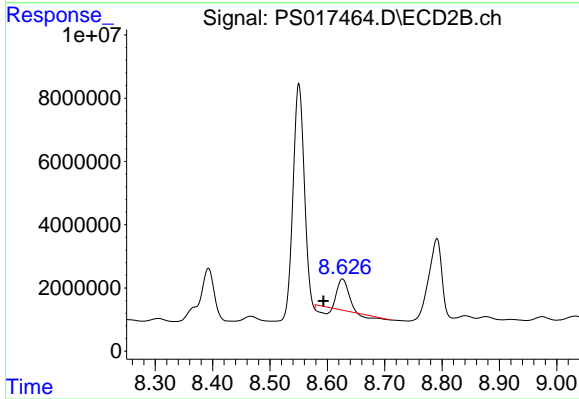
Instrument :
 ECD_S
 ClientSampleId :



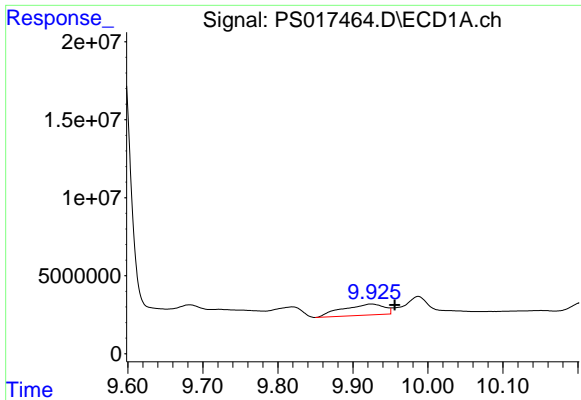
#10 Pentachlorophenol
 R.T.: 0.000 min
 Exp R.T. : 8.231 min
 Response: 0
 Conc: N.D.



#11 2,4,5-TP (SILVEX)
 R.T.: 9.177 min
 Delta R.T.: 0.061 min
 Response: 18354097
 Conc: 2.20 ng/ml



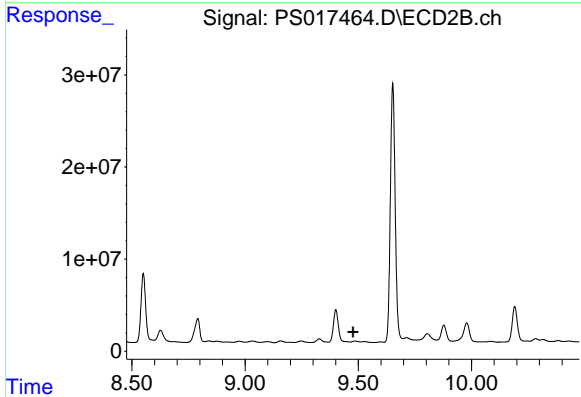
#11 2,4,5-TP (SILVEX)
 R.T.: 8.626 min
 Delta R.T.: 0.033 min
 Response: 10704258
 Conc: 3.02 ng/ml



#13 2,4-DB

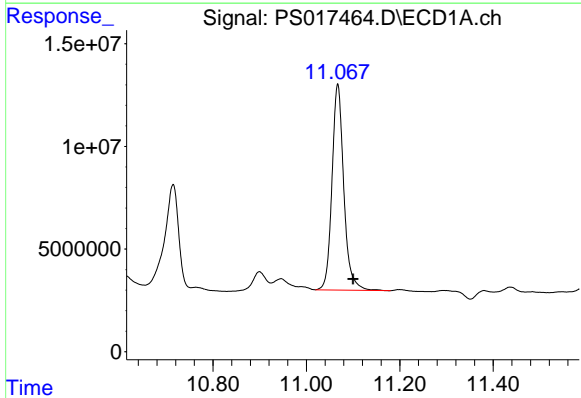
R.T.: 9.925 min
 Delta R.T.: -0.031 min
 Response: 27404185
 Conc: 16.11 ng/ml

Instrument :
 ECD_S
 ClientSampleId :



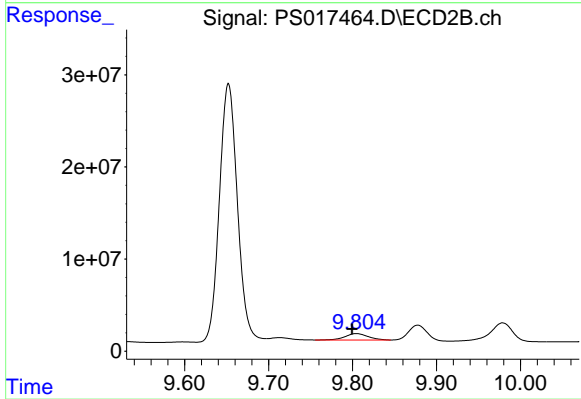
#13 2,4-DB

R.T.: 0.000 min
 Exp R.T. : 9.477 min
 Response: 0
 Conc: N.D.



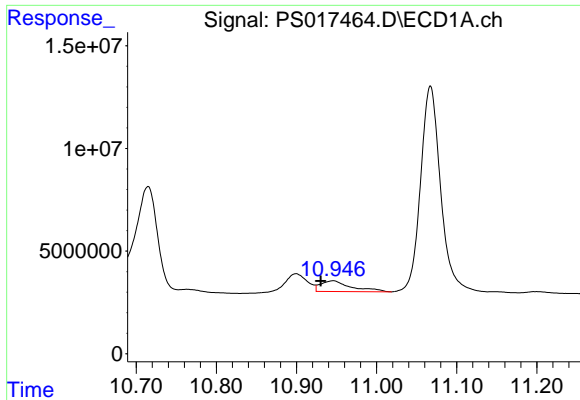
#14 DINOSEB

R.T.: 11.067 min
 Delta R.T.: -0.033 min
 Response: 175650817
 Conc: 28.21 ng/ml



#14 DINOSEB

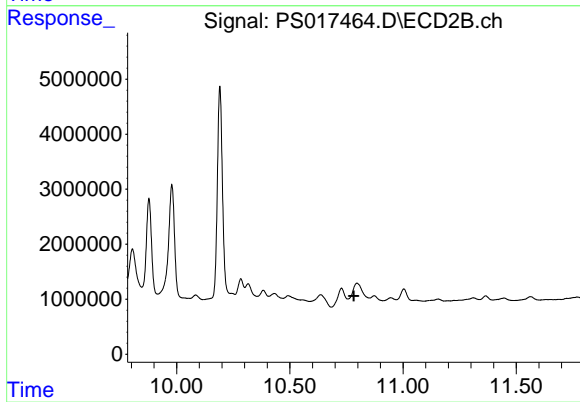
R.T.: 9.805 min
 Delta R.T.: 0.005 min
 Response: 13120457
 Conc: 5.56 ng/ml



#15 Picloram

R.T.: 10.946 min
 Delta R.T.: 0.015 min
 Response: 13855498
 Conc: 1.14 ng/ml

Instrument :
 ECD_S
 ClientSampleId :



#15 Picloram

R.T.: 0.000 min
 Exp R.T. : 10.783 min
 Response: 0
 Conc: N.D.