

Data Path : Z:\pestpcbsrv\HPCHEM1\ECD_S\Data\PS112123\
 Data File : PS024894.D
 Signal(s) : Signal #1: ECD1A.ch Signal #2: ECD2B.ch
 Acq On : 21 Nov 2023 12:23
 Operator : AR\AJ
 Sample : 05434-09
 Misc :
 ALS Vial : 9 Sample Multiplier: 1

Instrument :
 ECD_S
 ClientSampleId :

Integration File signal 1: autoint1.e
 Integration File signal 2: autoint2.e
 Quant Time: Nov 21 22:54:07 2023
 Quant Method : Z:\pestpcbsrv\HPCHEM1\ECD_S\Method\PS110323.M
 Quant Title : 8080.M
 QLast Update : Fri Nov 03 15:07:01 2023
 Response via : Initial Calibration
 Integrator: ChemStation

Volume Inj. : 2 µl
 Signal #1 Phase : Rtx-CLPesticides Signal #2 Phase: Rtx-CLPesticides2
 Signal #1 Info : 30M x 0.32mm x0.5 Signal #2 Info : 30M x 0.32mm x 0.25µm

Compound	RT#1	RT#2	Resp#1	Resp#2	ng/ml	ng/ml

System Monitoring Compounds						
4) S 2,4-DCAA	6.355	6.772	1109.7E6	370.0E6	543.547	548.416
Target Compounds						
1) T Dalapon	2.448	2.508	61048805	20833678	25.343	19.775
3) T 4-Nitroph...	6.188	6.418	56893356	15840427	43.892	36.075
5) T DICAMBA	0.000	6.919	0	922879	N.D.	<MDL
6) T MCPP	6.675	7.044	47376571	2228683	7.605	1.149 #
7) T MCPA	6.802	7.233	21899092	15481748	2.496	5.022 #
8) T DICHLORPROP	7.038f	7.557	13044923	25601806	5.576	35.047 #
9) T 2,4-D	0.000	7.840	0	5263582	N.D.	5.880
10) T Pentachlo...	7.458f	8.246	12960836	2175136	<MDL	<MDL #
12) T 2,4,5-T	8.302	8.984	189.3E6	2739049	14.475	<MDL #
13) T 2,4-DB	8.806	9.489	222.8E6	33573655	105.943	68.861 #
14) T DINOSEB	9.788f	9.801	628.0E6	53973582	63.677	18.931 #
15) T Picloram	9.703	10.778	110.3E6	58329124	6.199	9.600 #
16) T DCPA	10.108	10.778	65516251	58329124	3.828	11.606 #

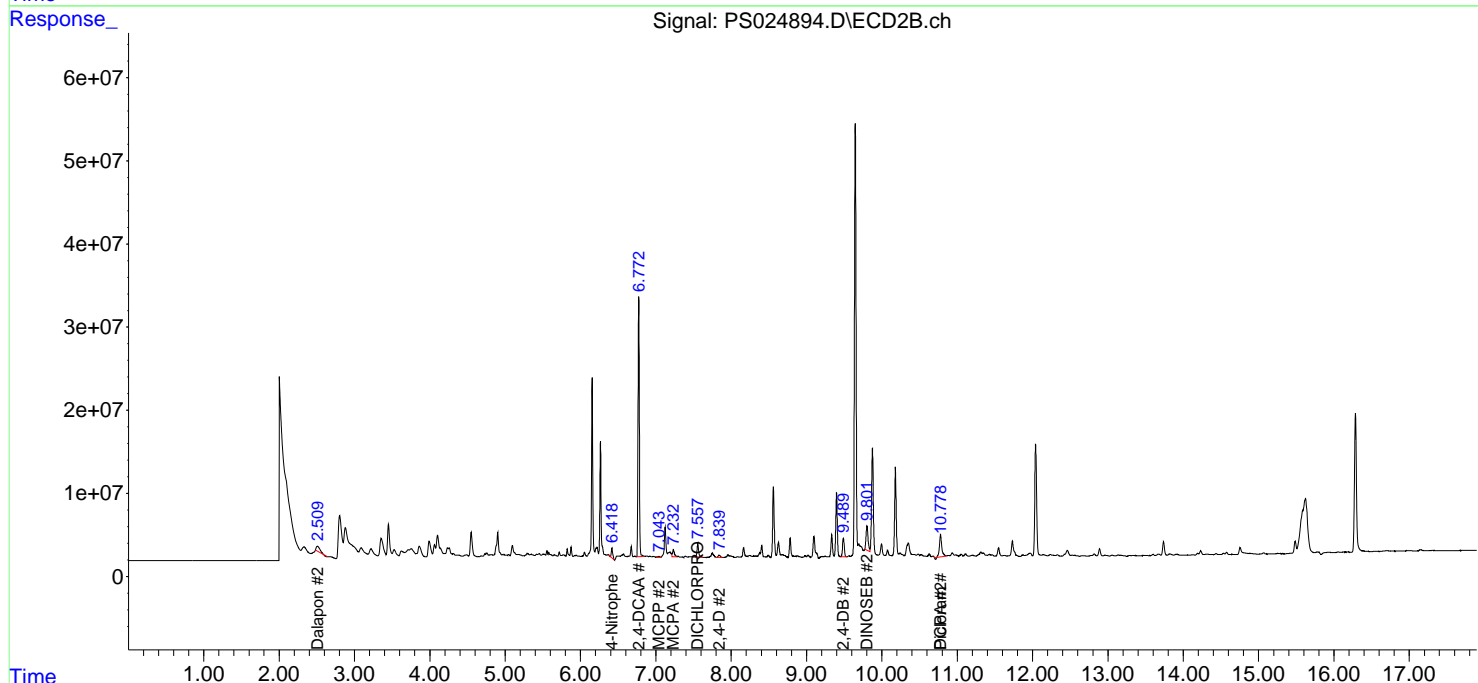
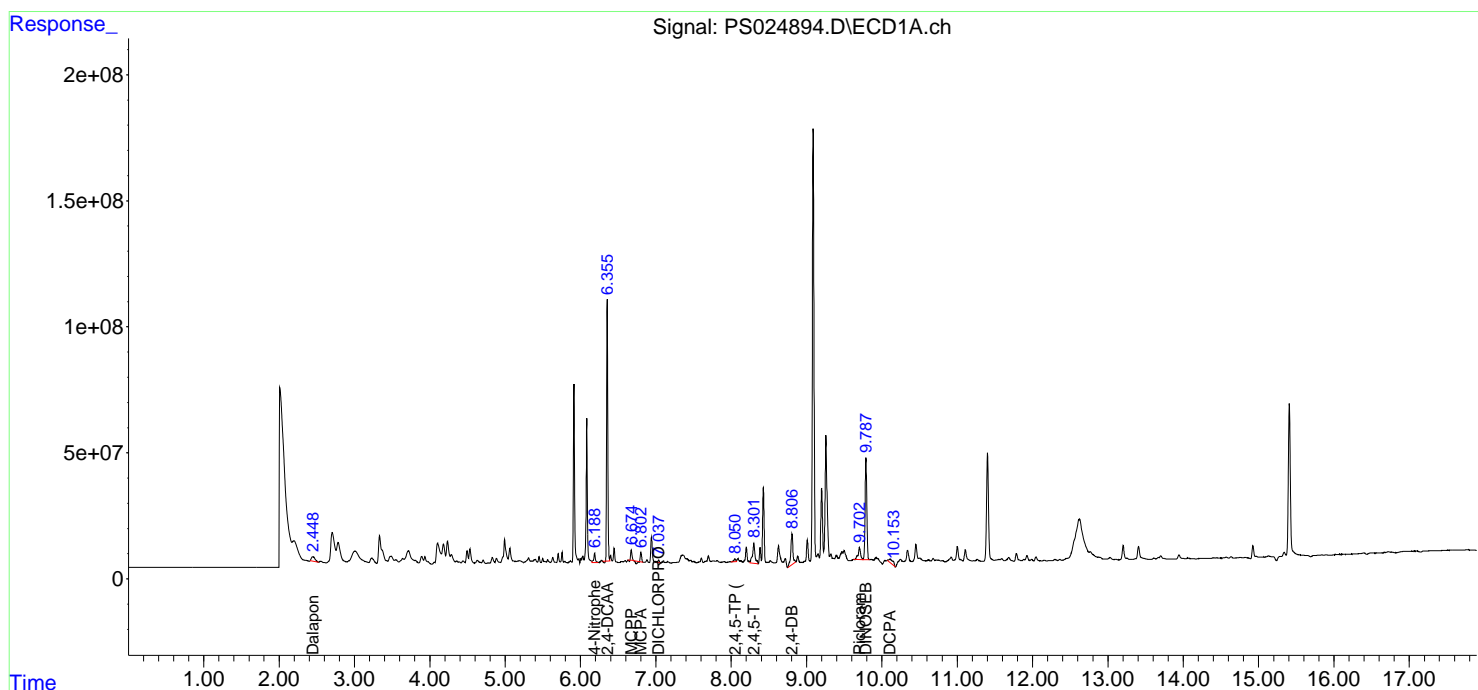
(f)=RT Delta > 1/2 Window (#)=Amounts differ by > 25% (m)=manual int.

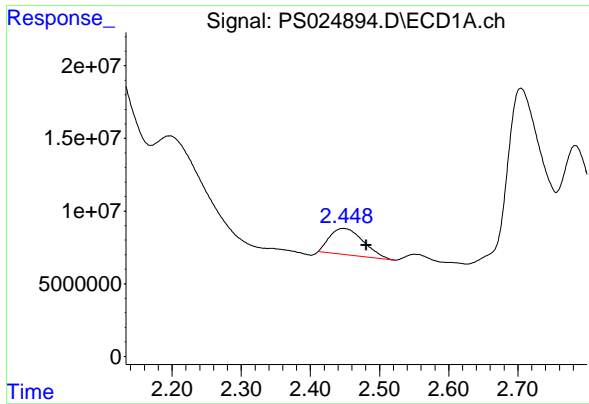
Data Path : Z:\pestpcbsrv\HPCHEM1\ECD_S\Data\PS112123\
 Data File : PS024894.D
 Signal(s) : Signal #1: ECD1A.ch Signal #2: ECD2B.ch
 Acq On : 21 Nov 2023 12:23
 Operator : AR\AJ
 Sample : 05434-09
 Misc :
 ALS Vial : 9 Sample Multiplier: 1

Instrument :
 ECD_S
 ClientSampleId :

Integration File signal 1: autoint1.e
 Integration File signal 2: autoint2.e
 Quant Time: Nov 21 22:54:07 2023
 Quant Method : Z:\pestpcbsrv\HPCHEM1\ECD_S\Method\PS110323.M
 Quant Title : 8080.M
 QLast Update : Fri Nov 03 15:07:01 2023
 Response via : Initial Calibration
 Integrator: ChemStation

Volume Inj. : 2 µl
 Signal #1 Phase : Rtx-CLPesticides Signal #2 Phase: Rtx-CLPesticides2
 Signal #1 Info : 30M x 0.32mm x 0.5 Signal #2 Info : 30M x 0.32mm x 0.25µm

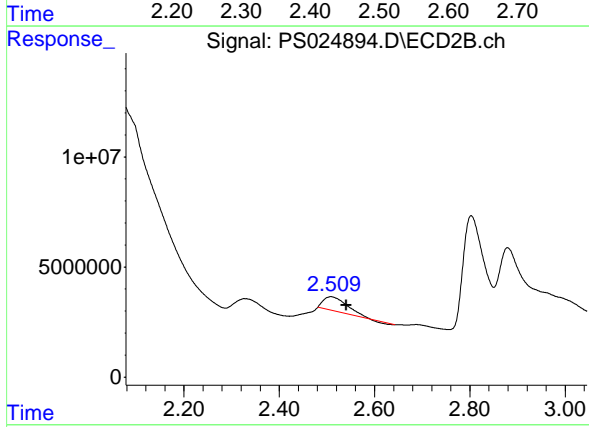




#1 Dalapon

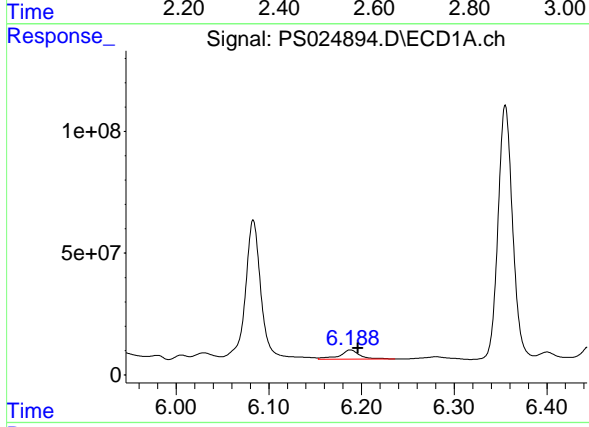
R.T.: 2.448 min
 Delta R.T.: -0.033 min
 Response: 61048805
 Conc: 25.34 ng/ml

Instrument : ECD_S
 ClientSampleId :



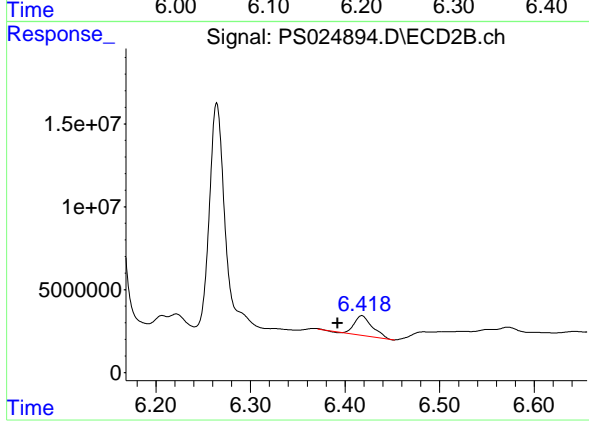
#1 Dalapon

R.T.: 2.508 min
 Delta R.T.: -0.032 min
 Response: 20833678
 Conc: 19.77 ng/ml



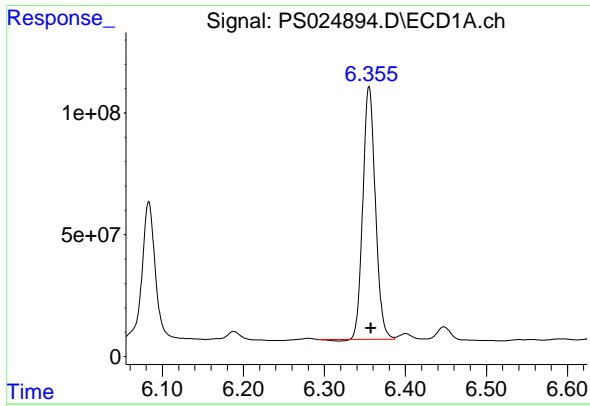
#3 4-Nitrophenol

R.T.: 6.188 min
 Delta R.T.: -0.008 min
 Response: 56893356
 Conc: 43.89 ng/ml



#3 4-Nitrophenol

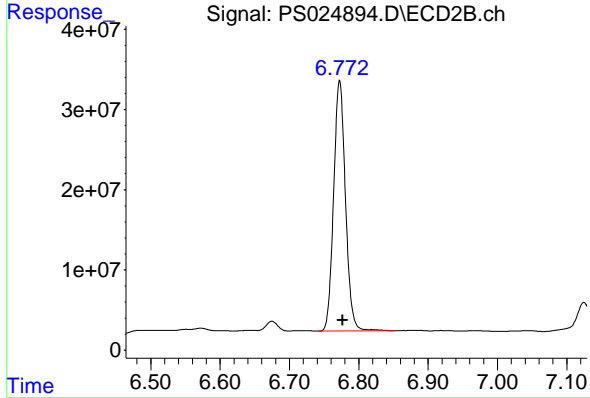
R.T.: 6.418 min
 Delta R.T.: 0.026 min
 Response: 15840427
 Conc: 36.08 ng/ml



#4 2,4-DCAA

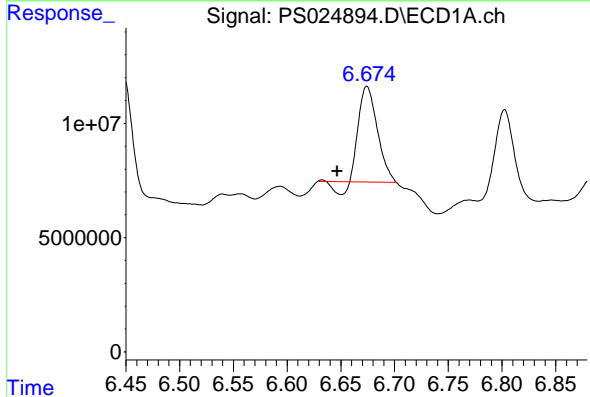
R.T.: 6.355 min
 Delta R.T.: -0.002 min
 Response: 1109653327
 Conc: 543.55 ng/ml

Instrument :
 ECD_S
 ClientSampleId :



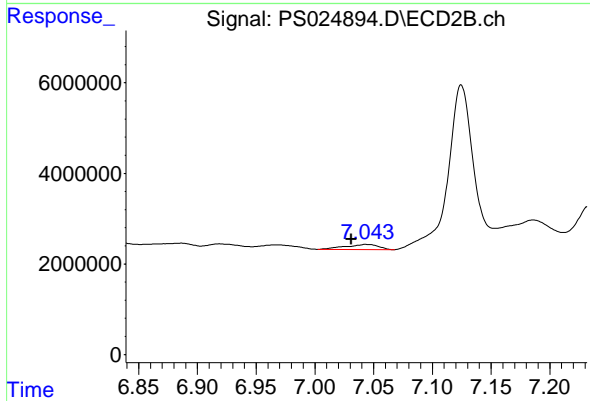
#4 2,4-DCAA

R.T.: 6.772 min
 Delta R.T.: -0.004 min
 Response: 369961155
 Conc: 548.42 ng/ml



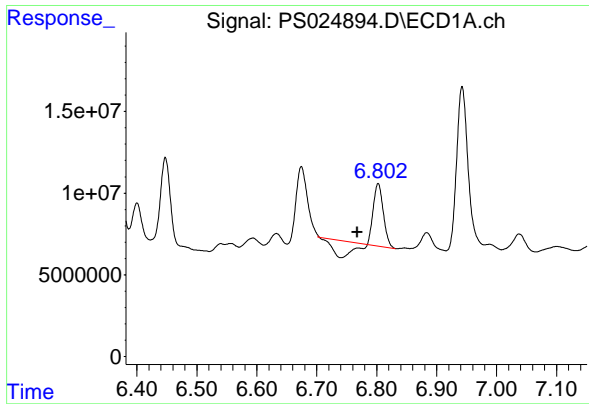
#6 MCPP

R.T.: 6.675 min
 Delta R.T.: 0.028 min
 Response: 47376571
 Conc: 7.60 ug/ml



#6 MCPP

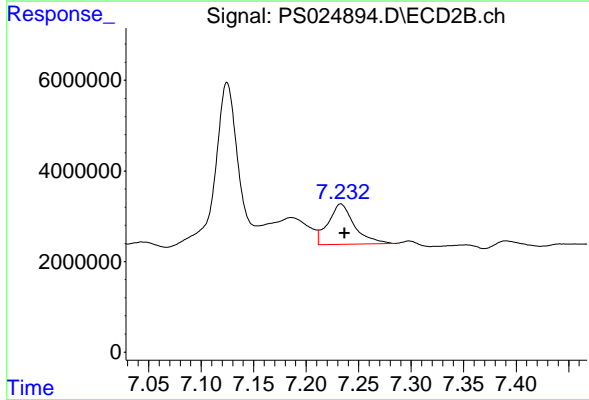
R.T.: 7.044 min
 Delta R.T.: 0.013 min
 Response: 2228683
 Conc: 1.15 ug/ml



#7 MCPA

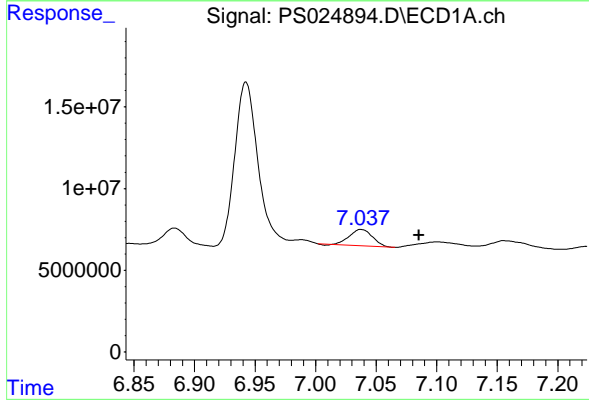
R.T.: 6.802 min
 Delta R.T.: 0.034 min
 Response: 21899092
 Conc: 2.50 ug/ml

Instrument :
 ECD_S
 ClientSampleId :



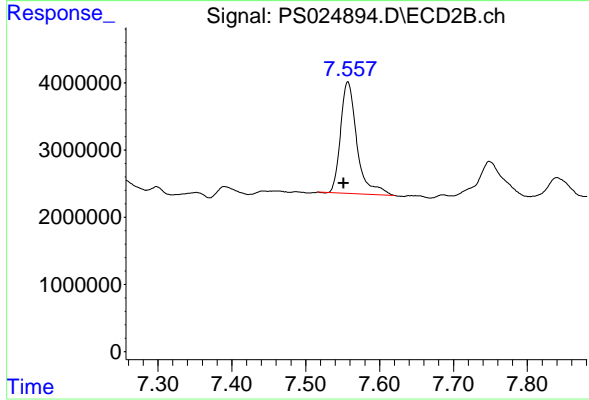
#7 MCPA

R.T.: 7.233 min
 Delta R.T.: -0.004 min
 Response: 15481748
 Conc: 5.02 ug/ml



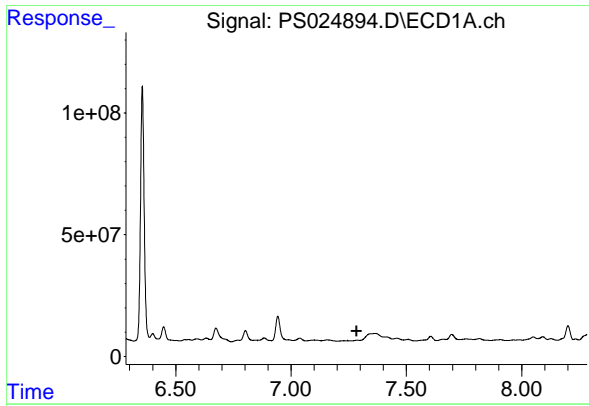
#8 DICHLORPROP

R.T.: 7.038 min
 Delta R.T.: -0.048 min
 Response: 13044923
 Conc: 5.58 ng/ml



#8 DICHLORPROP

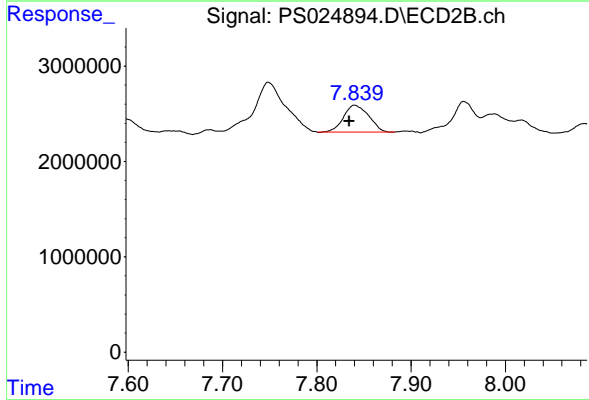
R.T.: 7.557 min
 Delta R.T.: 0.006 min
 Response: 25601806
 Conc: 35.05 ng/ml



#9 2,4-D

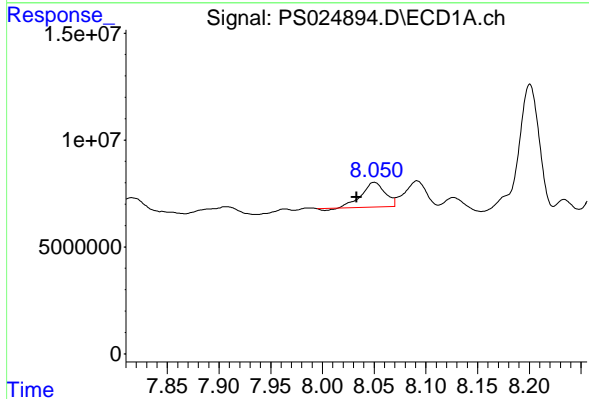
R.T.: 0.000 min
 Exp R.T.: 7.284 min
 Response: 0
 Conc: N.D.

Instrument :
 ECD_S
 ClientSampleId :



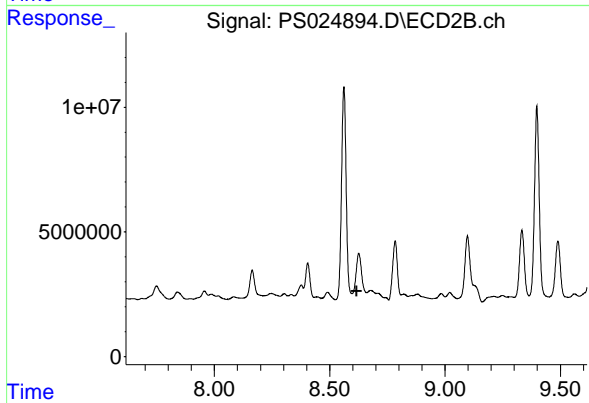
#9 2,4-D

R.T.: 7.840 min
 Delta R.T.: 0.006 min
 Response: 5263582
 Conc: 5.88 ng/ml



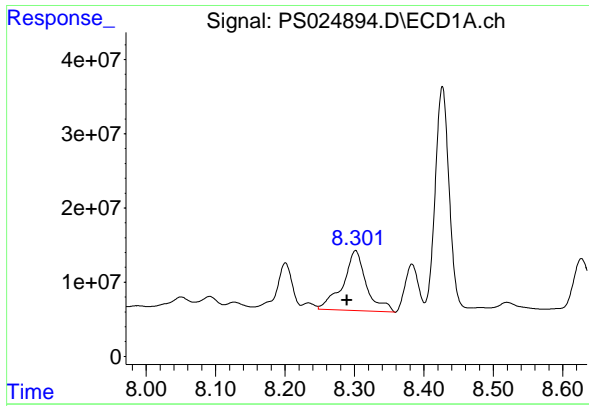
#11 2,4,5-TP (SILVEX)

R.T.: 8.050 min
 Delta R.T.: 0.017 min
 Response: 18185425
 Conc: 1.31 ng/ml



#11 2,4,5-TP (SILVEX)

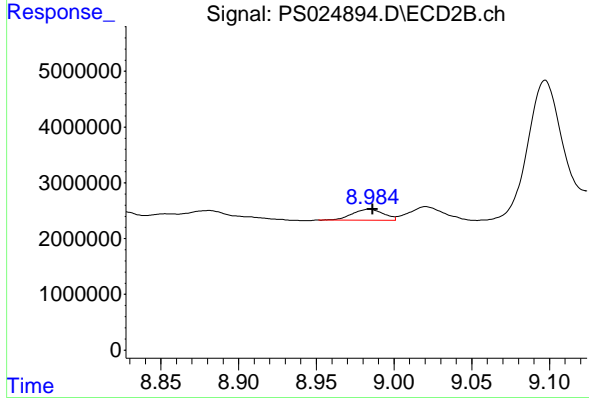
R.T.: 8.626 min
 Delta R.T.: 0.010 min
 Response: -3565592
 Conc: N.D.



#12 2,4,5-T

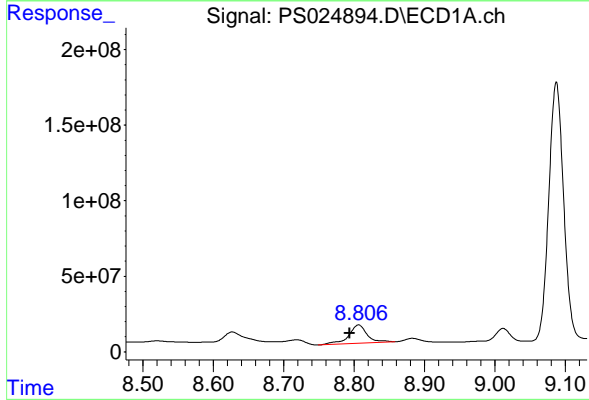
R.T.: 8.302 min
 Delta R.T.: 0.013 min
 Response: 189269607
 Conc: 14.48 ng/ml

Instrument :
 ECD_S
 ClientSampleId :



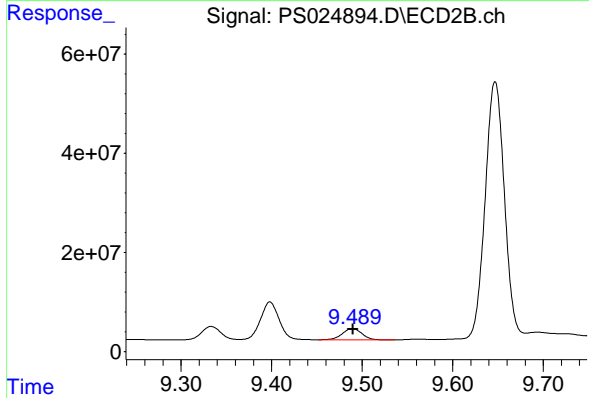
#12 2,4,5-T

R.T.: 8.984 min
 Delta R.T.: -0.002 min
 Response: 2739049
 Conc: N.D.



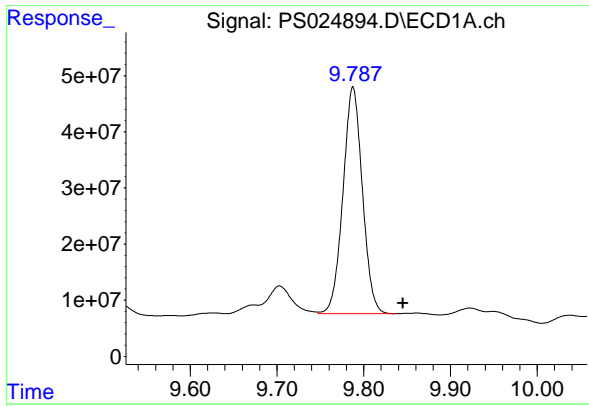
#13 2,4-DB

R.T.: 8.806 min
 Delta R.T.: 0.013 min
 Response: 222782565
 Conc: 105.94 ng/ml



#13 2,4-DB

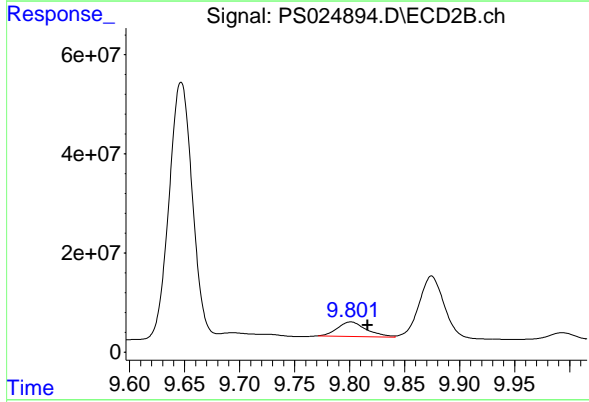
R.T.: 9.489 min
 Delta R.T.: 0.000 min
 Response: 33573655
 Conc: 68.86 ng/ml



#14 DINOSEB

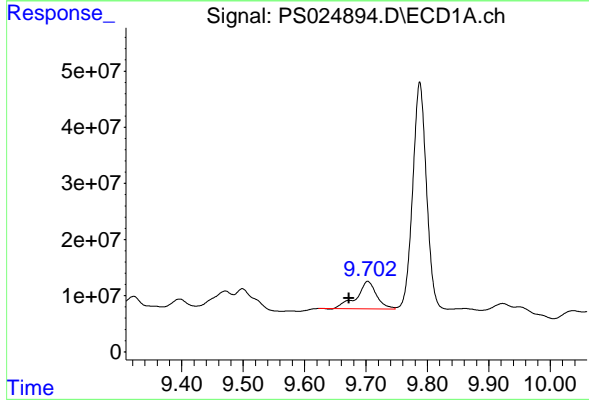
R.T.: 9.788 min
 Delta R.T.: -0.058 min
 Response: 627990839
 Conc: 63.68 ng/ml

Instrument :
 ECD_S
 ClientSampleId :



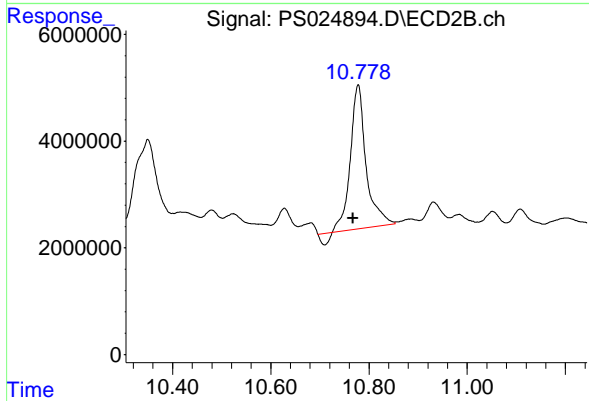
#14 DINOSEB

R.T.: 9.801 min
 Delta R.T.: -0.015 min
 Response: 53973582
 Conc: 18.93 ng/ml



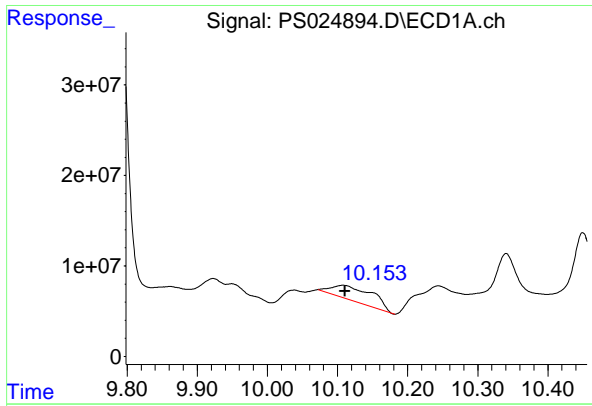
#15 Picloram

R.T.: 9.703 min
 Delta R.T.: 0.031 min
 Response: 110255679
 Conc: 6.20 ng/ml



#15 Picloram

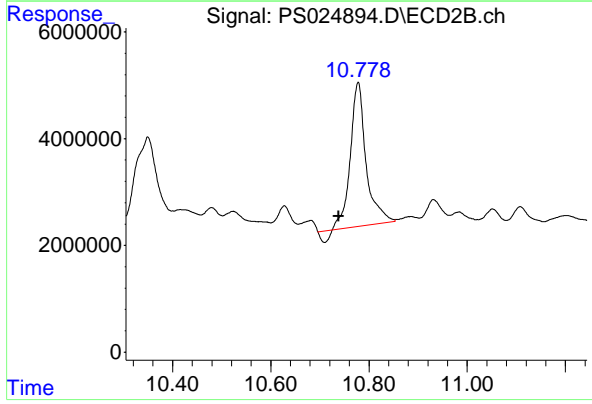
R.T.: 10.778 min
 Delta R.T.: 0.010 min
 Response: 58329124
 Conc: 9.60 ng/ml



#16 DCPA

R.T.: 10.108 min
 Delta R.T.: -0.003 min
 Response: 65516251
 Conc: 3.83 ng/ml

Instrument :
 ECD_S
 ClientSampleId :



#16 DCPA

R.T.: 10.778 min
 Delta R.T.: 0.040 min
 Response: 58329124
 Conc: 11.61 ng/ml