

Data Path : Z:\pestpcbsrv\HPCHEM1\ECD_S\Data\PS112123\
 Data File : PS024911.D
 Signal(s) : Signal #1: ECD1A.ch Signal #2: ECD2B.ch
 Acq On : 21 Nov 2023 19:12
 Operator : AR\AJ
 Sample : 05449-12
 Misc :
 ALS Vial : 24 Sample Multiplier: 1

Instrument :
 ECD_S
 ClientSampleId :

Integration File signal 1: autoint1.e
 Integration File signal 2: autoint2.e
 Quant Time: Nov 21 22:57:17 2023
 Quant Method : Z:\pestpcbsrv\HPCHEM1\ECD_S\Method\PS110323.M
 Quant Title : 8080.M
 QLast Update : Fri Nov 03 15:07:01 2023
 Response via : Initial Calibration
 Integrator: ChemStation

Volume Inj. : 2 µl
 Signal #1 Phase : Rtx-CLPesticides Signal #2 Phase: Rtx-CLPesticides2
 Signal #1 Info : 30M x 0.32mm x0.5 Signal #2 Info : 30M x 0.32mm x 0.25µm

Compound	RT#1	RT#2	Resp#1	Resp#2	ng/ml	ng/ml

System Monitoring Compounds						
4) S 2,4-DCAA	6.355	6.772	583.7E6	121.1E6	285.919	179.480 #
Target Compounds						
1) T Dalapon	2.438f	0.000	44311777	0	18.395	N.D. #
2) T 3,5-DICHL...	5.793f	5.979	8298677	1173199	2.646	1.096 #
3) T 4-Nitroph...	6.170	6.414	51563996	6209529	39.780	14.142 #
5) T DICAMBA	6.519	6.913	14379346	2878937	1.607	<MDL #
6) T MCPP	6.671	7.019	68451334	12574382	10.987	6.481 #
8) T DICHLORPROP	7.071	7.555	8891463	21541094	3.801	29.488 #
9) T 2,4-D	7.288	7.837	19263520	2838959	7.008	3.172 #
10) T Pentachlo...	7.510	8.252	57306536	12104192	1.759	1.139 #
11) T 2,4,5-TP ...	8.027	8.612	12176115	242579	<MDL	<MDL #
12) T 2,4,5-T	8.344f	8.963	26334859	1783280	2.014	<MDL #
13) T 2,4-DB	8.801	9.481	126.2E6	21846214	60.011	44.807 #
14) T DINOSEB	9.829	9.821	16588194	79344	1.682	<MDL #
15) T Picloram	9.671	10.765	25271079	7206870	1.421	1.186
16) T DCPA	0.000	10.765	0	7206870	N.D.	1.434

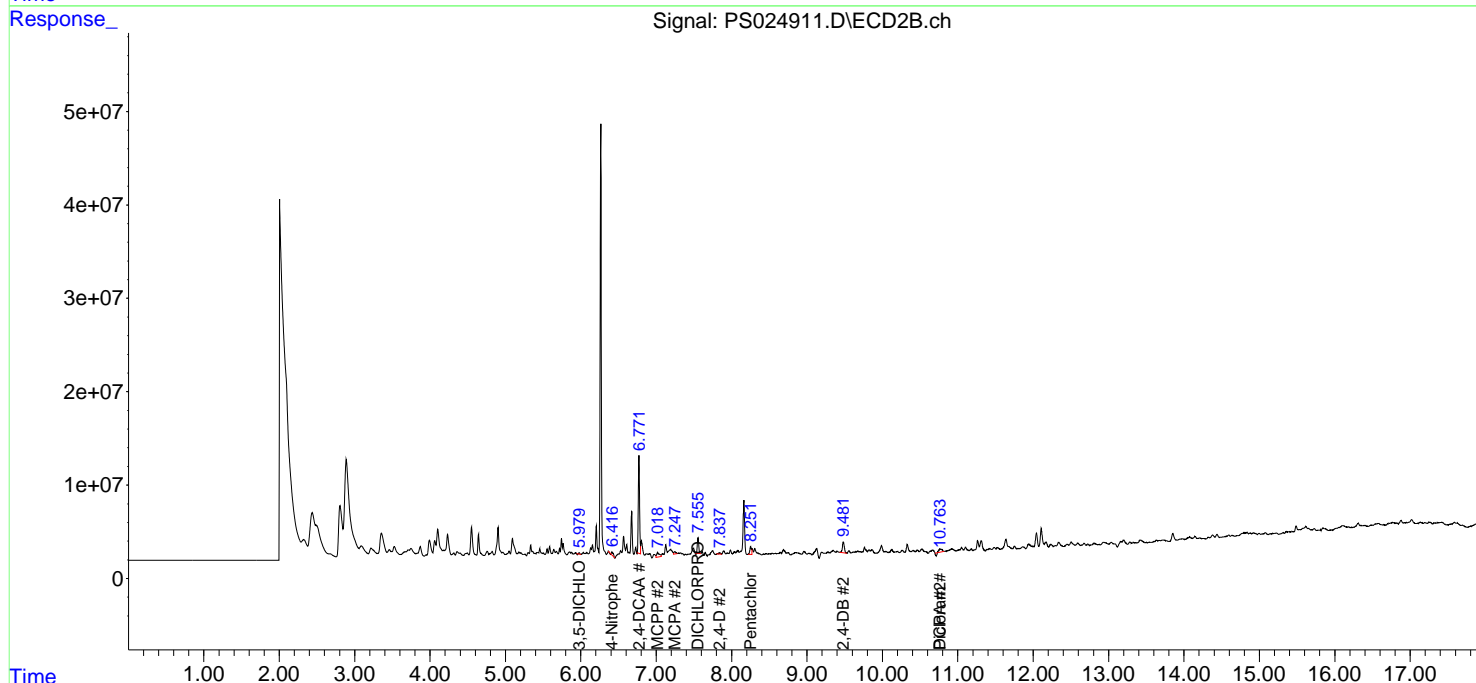
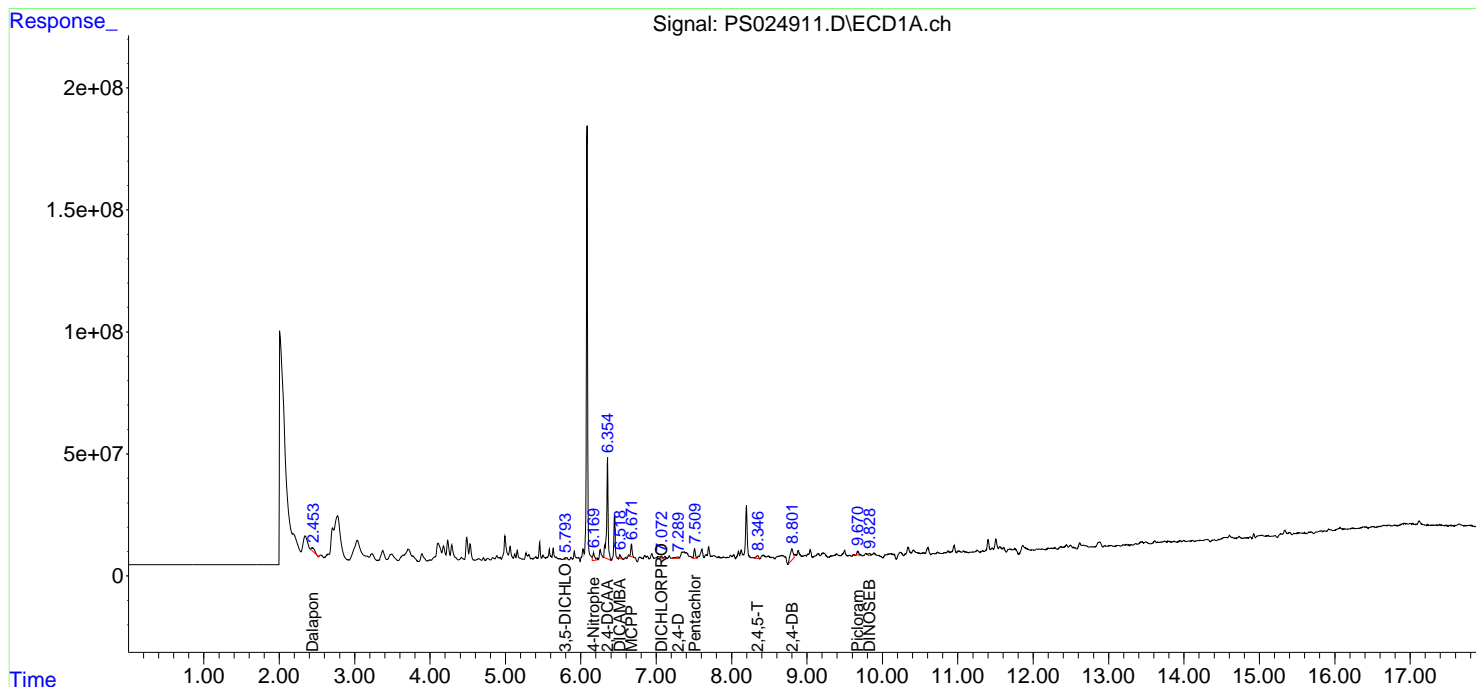
(f)=RT Delta > 1/2 Window (#)=Amounts differ by > 25% (m)=manual int.

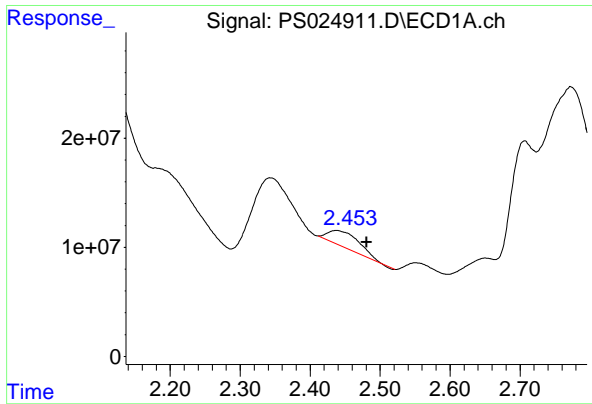
Data Path : Z:\pestpcbsrv\HPCHEM1\ECD_S\Data\PS112123\
 Data File : PS024911.D
 Signal(s) : Signal #1: ECD1A.ch Signal #2: ECD2B.ch
 Acq On : 21 Nov 2023 19:12
 Operator : AR\AJ
 Sample : 05449-12
 Misc :
 ALS Vial : 24 Sample Multiplier: 1

Instrument :
 ECD_S
 ClientSampleId :

Integration File signal 1: autoint1.e
 Integration File signal 2: autoint2.e
 Quant Time: Nov 21 22:57:17 2023
 Quant Method : Z:\pestpcbsrv\HPCHEM1\ECD_S\Method\PS110323.M
 Quant Title : 8080.M
 QLast Update : Fri Nov 03 15:07:01 2023
 Response via : Initial Calibration
 Integrator: ChemStation

Volume Inj. : 2 µl
 Signal #1 Phase : Rtx-CLPesticides Signal #2 Phase: Rtx-CLPesticides2
 Signal #1 Info : 30M x 0.32mm x 0.5 Signal #2 Info : 30M x 0.32mm x 0.25µm

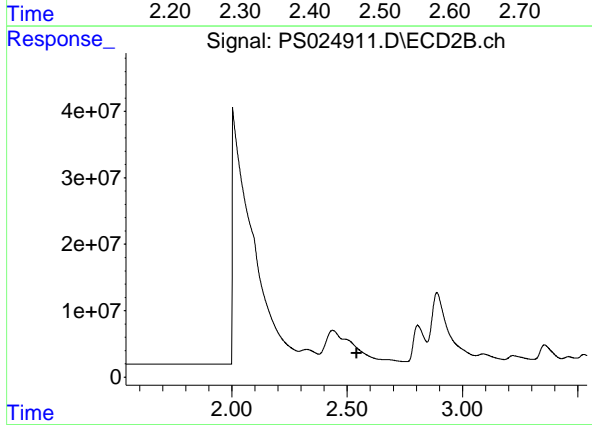




#1 Dalapon

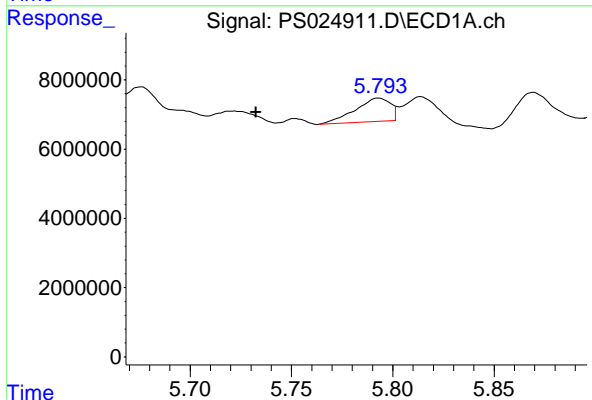
R.T.: 2.438 min
 Delta R.T.: -0.043 min
 Response: 44311777
 Conc: 18.39 ng/ml

Instrument : ECD_S
 ClientSampleId :



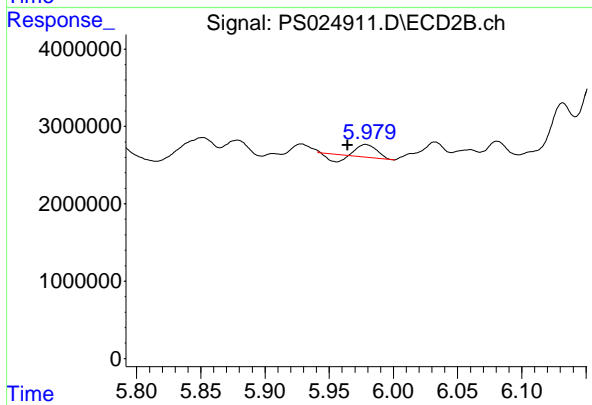
#1 Dalapon

R.T.: 0.000 min
 Exp R.T. : 2.541 min
 Response: 0
 Conc: N.D.



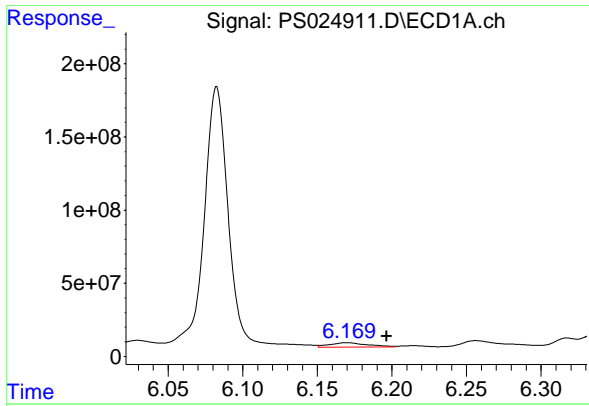
#2 3,5-DICHLOROBENZOIC ACID

R.T.: 5.793 min
 Delta R.T.: 0.061 min
 Response: 8298677
 Conc: 2.65 ng/ml



#2 3,5-DICHLOROBENZOIC ACID

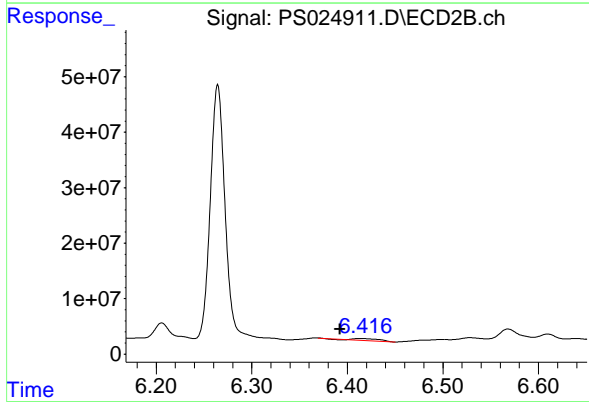
R.T.: 5.979 min
 Delta R.T.: 0.014 min
 Response: 1173199
 Conc: 1.10 ng/ml



#3 4-Nitrophenol

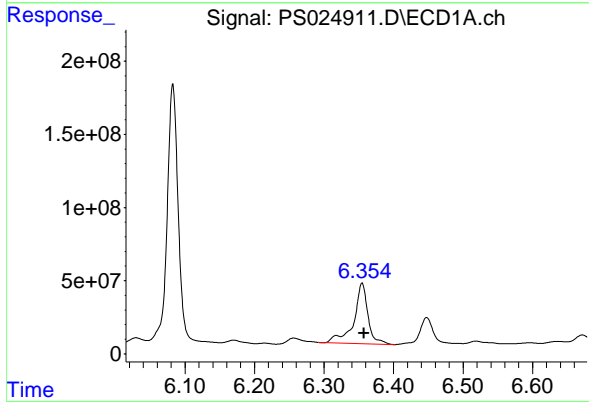
R.T.: 6.170 min
 Delta R.T.: -0.026 min
 Response: 51563996
 Conc: 39.78 ng/ml

Instrument :
 ECD_S
 ClientSampleId :



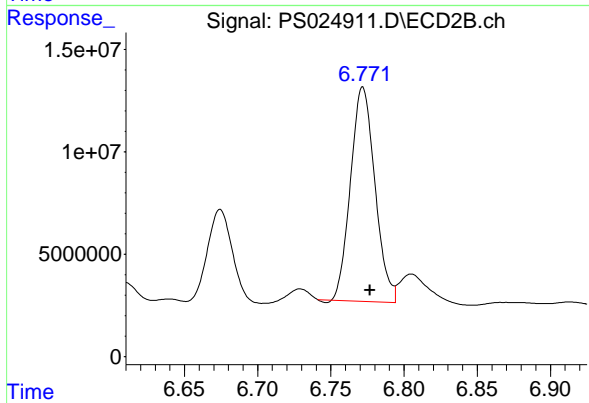
#3 4-Nitrophenol

R.T.: 6.414 min
 Delta R.T.: 0.022 min
 Response: 6209529
 Conc: 14.14 ng/ml



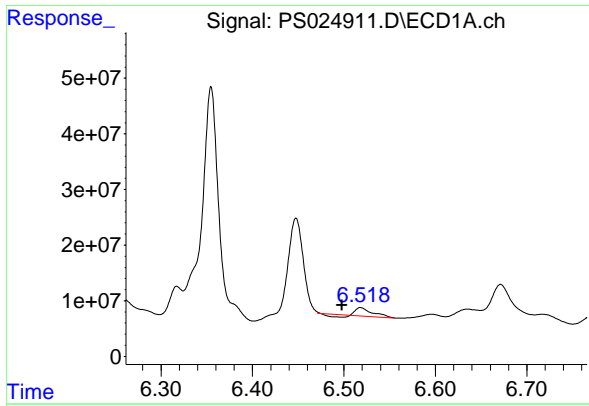
#4 2,4-DCAA

R.T.: 6.355 min
 Delta R.T.: -0.003 min
 Response: 583705060
 Conc: 285.92 ng/ml



#4 2,4-DCAA

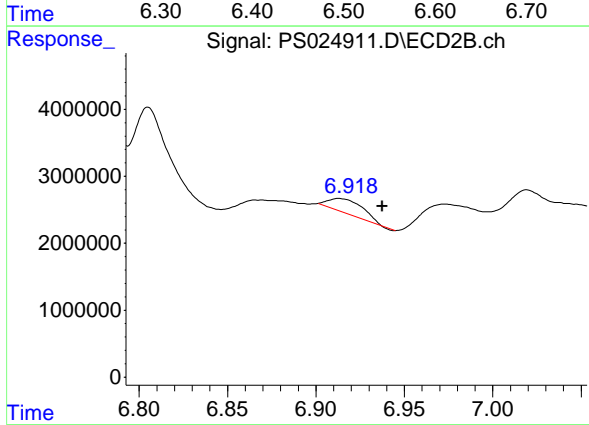
R.T.: 6.772 min
 Delta R.T.: -0.005 min
 Response: 121077065
 Conc: 179.48 ng/ml



#5 DICAMBA

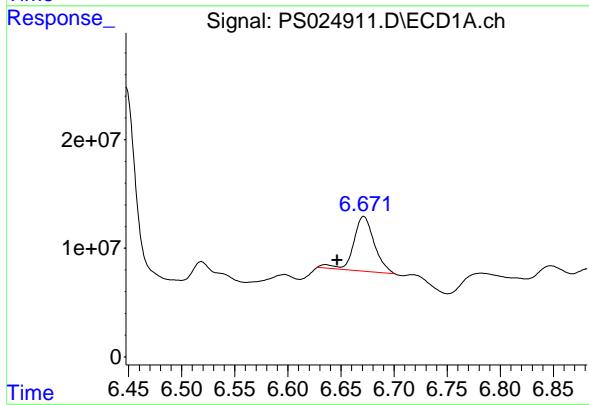
R.T.: 6.519 min
 Delta R.T.: 0.021 min
 Response: 14379346
 Conc: 1.61 ng/ml

Instrument :
 ECD_S
 ClientSampleId :



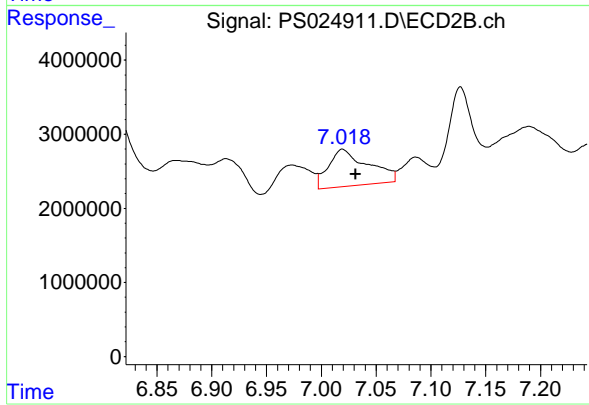
#5 DICAMBA

R.T.: 6.913 min
 Delta R.T.: -0.025 min
 Response: 2878937
 Conc: N.D.



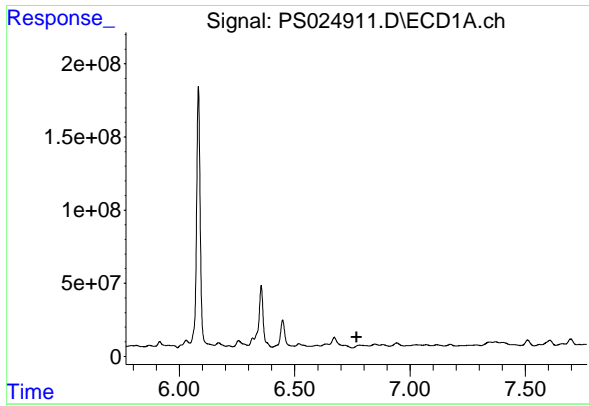
#6 MCPP

R.T.: 6.671 min
 Delta R.T.: 0.025 min
 Response: 68451334
 Conc: 10.99 ug/ml



#6 MCPP

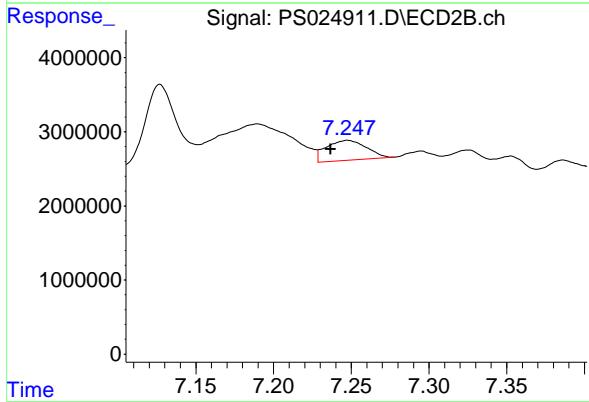
R.T.: 7.019 min
 Delta R.T.: -0.012 min
 Response: 12574382
 Conc: 6.48 ug/ml



#7 MCPA

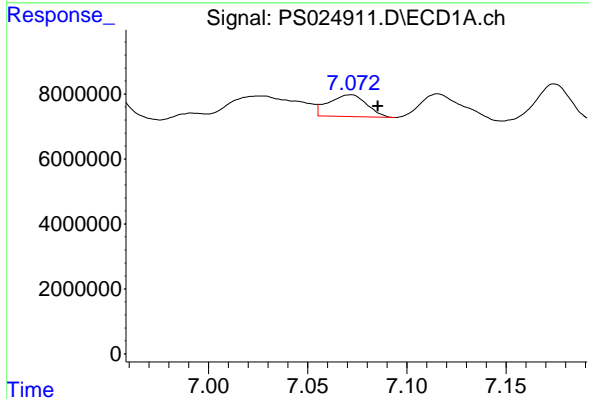
R.T.: 6.782 min
 Delta R.T.: 0.014 min
 Response: -17075879
 Conc: N.D.

Instrument :
 ECD_S
 ClientSampleId :



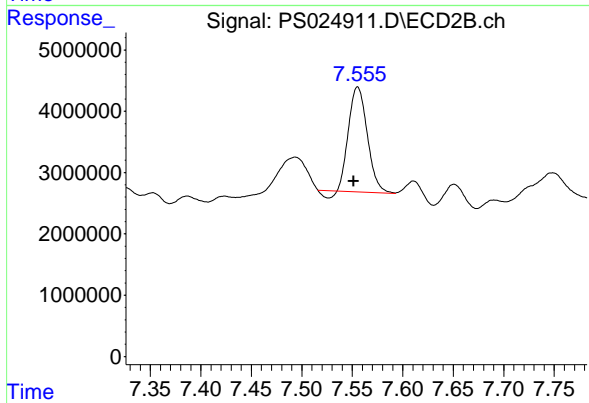
#7 MCPA

R.T.: 7.248 min
 Delta R.T.: 0.011 min
 Response: 4833943
 Conc: 1.57 ug/ml



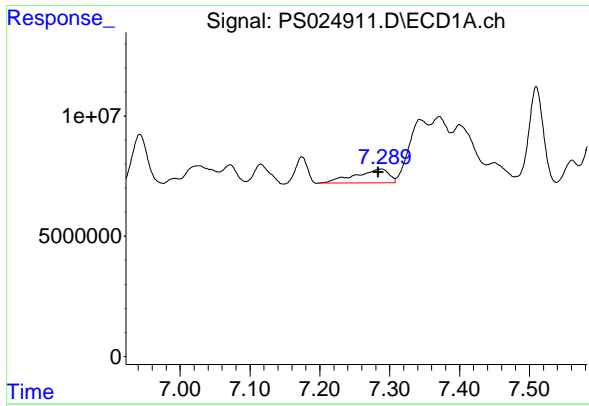
#8 DICHLORPROP

R.T.: 7.071 min
 Delta R.T.: -0.014 min
 Response: 8891463
 Conc: 3.80 ng/ml



#8 DICHLORPROP

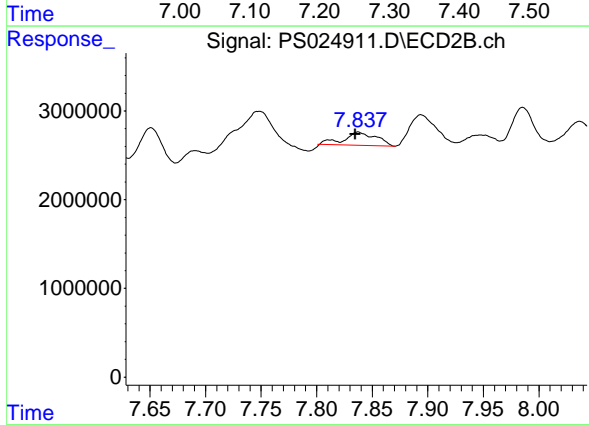
R.T.: 7.555 min
 Delta R.T.: 0.004 min
 Response: 21541094
 Conc: 29.49 ng/ml



#9 2,4-D

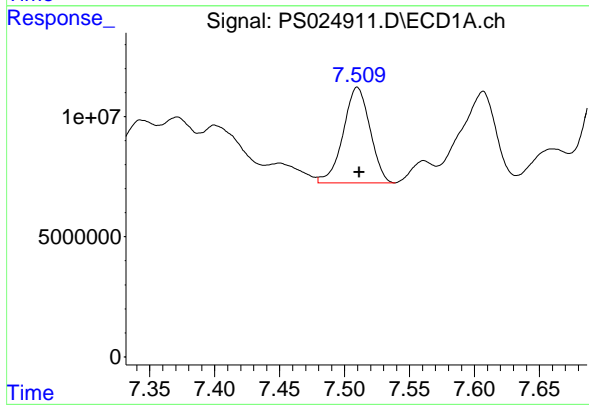
R.T.: 7.288 min
 Delta R.T.: 0.004 min
 Response: 19263520
 Conc: 7.01 ng/ml

Instrument :
 ECD_S
 ClientSampleId :



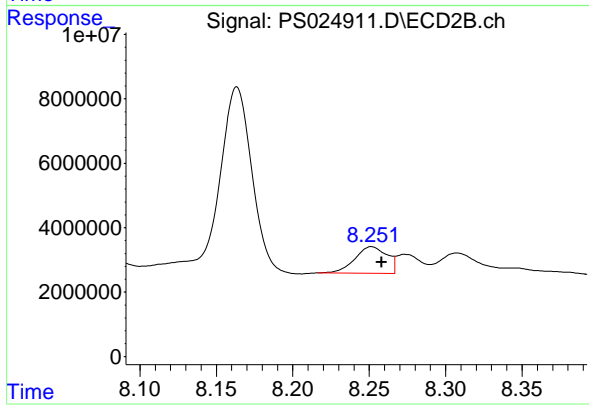
#9 2,4-D

R.T.: 7.837 min
 Delta R.T.: 0.003 min
 Response: 2838959
 Conc: 3.17 ng/ml



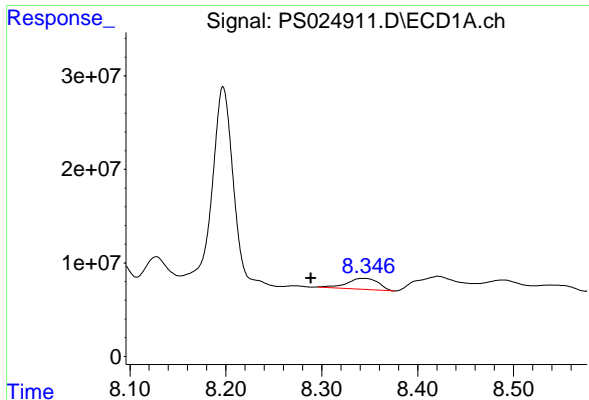
#10 Pentachlorophenol

R.T.: 7.510 min
 Delta R.T.: -0.002 min
 Response: 57306536
 Conc: 1.76 ng/ml



#10 Pentachlorophenol

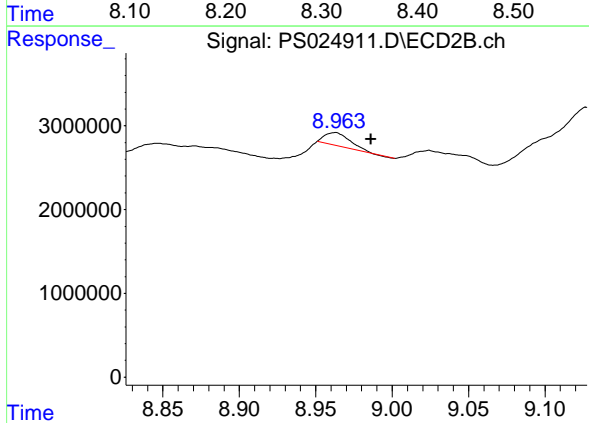
R.T.: 8.252 min
 Delta R.T.: -0.007 min
 Response: 12104192
 Conc: 1.14 ng/ml



#12 2,4,5-T

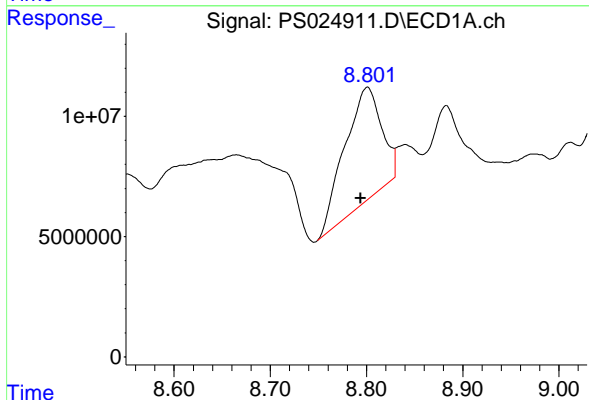
R.T.: 8.344 min
 Delta R.T.: 0.055 min
 Response: 26334859
 Conc: 2.01 ng/ml

Instrument :
 ECD_S
 ClientSampleId :



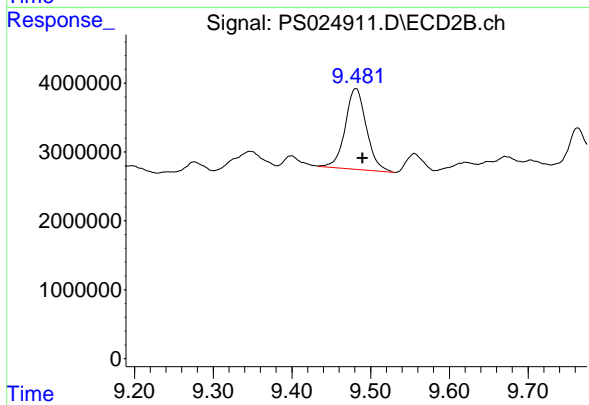
#12 2,4,5-T

R.T.: 8.963 min
 Delta R.T.: -0.023 min
 Response: 1783280
 Conc: N.D.



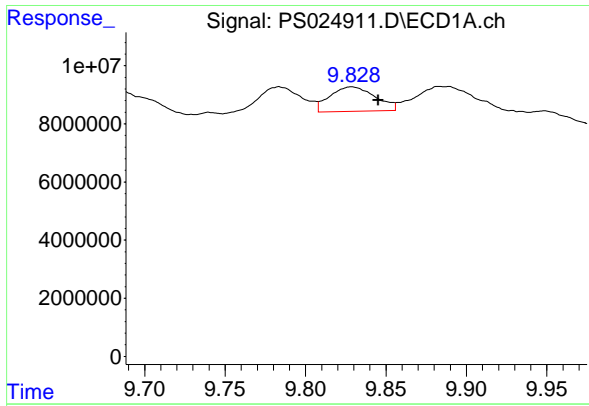
#13 2,4-DB

R.T.: 8.801 min
 Delta R.T.: 0.007 min
 Response: 126193646
 Conc: 60.01 ng/ml



#13 2,4-DB

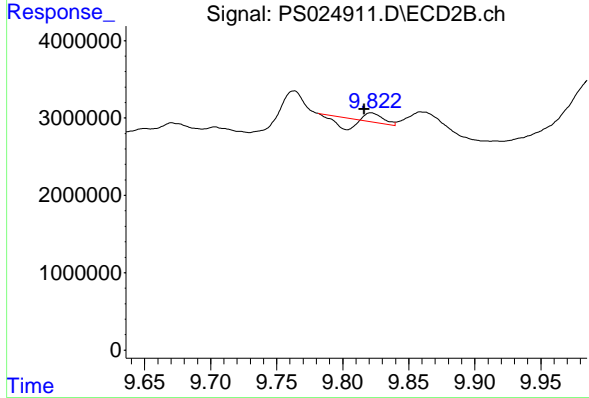
R.T.: 9.481 min
 Delta R.T.: -0.009 min
 Response: 21846214
 Conc: 44.81 ng/ml



#14 DINOSEB

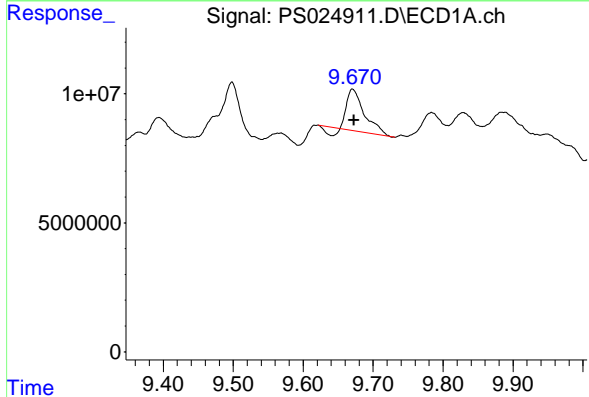
R.T.: 9.829 min
 Delta R.T.: -0.017 min
 Response: 16588194
 Conc: 1.68 ng/ml

Instrument : ECD_S
 ClientSampleId :



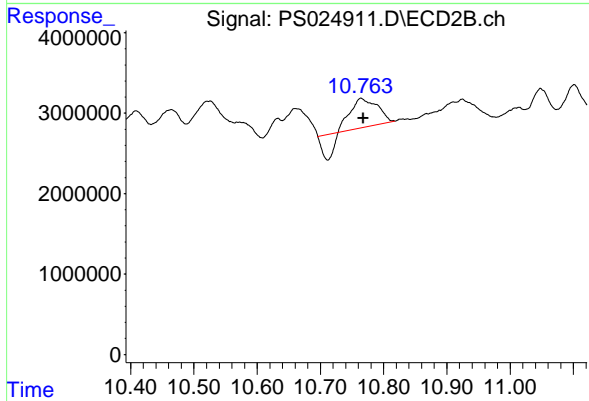
#14 DINOSEB

R.T.: 9.821 min
 Delta R.T.: 0.005 min
 Response: 79344
 Conc: N.D.



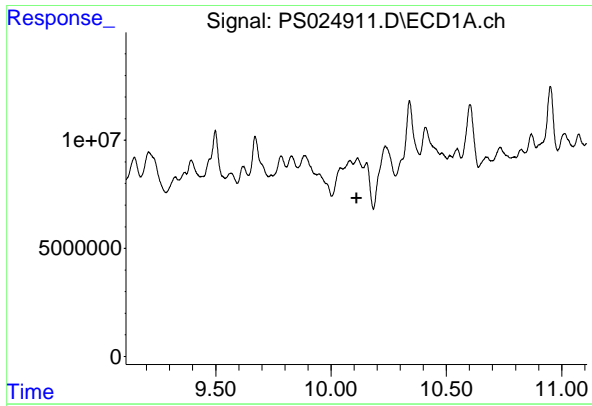
#15 Picloram

R.T.: 9.671 min
 Delta R.T.: -0.001 min
 Response: 25271079
 Conc: 1.42 ng/ml



#15 Picloram

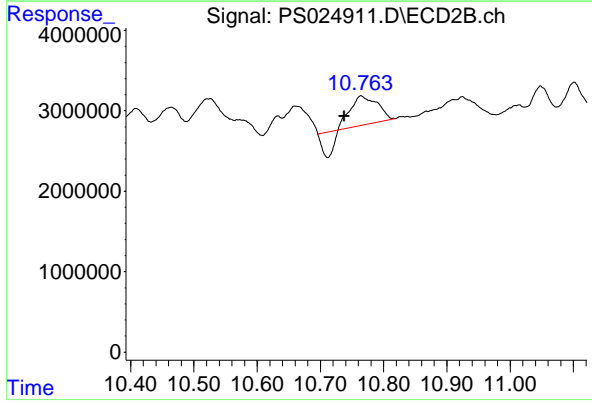
R.T.: 10.765 min
 Delta R.T.: -0.003 min
 Response: 7206870
 Conc: 1.19 ng/ml



#16 DCPA

R.T.: 0.000 min
 Exp R.T.: 10.111 min
 Response: 0
 Conc: N.D.

Instrument :
 ECD_S
 ClientSampleId :



#16 DCPA

R.T.: 10.765 min
 Delta R.T.: 0.027 min
 Response: 7206870
 Conc: 1.43 ng/ml