

Data Path : Z:\pestpcbsrv\HPCHEM1\ECD_S\Data\PS112123\
 Data File : PS024927.D
 Signal(s) : Signal #1: ECD1A.ch Signal #2: ECD2B.ch
 Acq On : 22 Nov 2023 01:39
 Operator : AR\AJ
 Sample : 05468-09
 Misc :
 ALS Vial : 38 Sample Multiplier: 1

Instrument :
 ECD_S
 ClientSampleId :

Integration File signal 1: autoint1.e
 Integration File signal 2: autoint2.e
 Quant Time: Nov 22 02:29:06 2023
 Quant Method : Z:\pestpcbsrv\HPCHEM1\ECD_S\Method\PS110323.M
 Quant Title : 8080.M
 QLast Update : Fri Nov 03 15:07:01 2023
 Response via : Initial Calibration
 Integrator: ChemStation

Volume Inj. : 2 µl
 Signal #1 Phase : Rtx-CLPesticides Signal #2 Phase: Rtx-CLPesticides2
 Signal #1 Info : 30M x 0.32mm x0.5 Signal #2 Info : 30M x 0.32mm x 0.25µm

Compound	RT#1	RT#2	Resp#1	Resp#2	ng/ml	ng/ml

System Monitoring Compounds						
4) S 2,4-DCAA	6.355	6.772	1477.6E6	460.2E6	723.772	682.123
Target Compounds						
2) T 3,5-DICHL...	5.678f	5.965	-1160997	543848	N.D.	<MDL
3) T 4-Nitroph...	6.171	6.435f	10980938	10990916	8.471	25.031 #
5) T DICAMBA	6.490	6.970	1873790	489831	<MDL	<MDL #
6) T MCPP	6.648	7.000	100.0E6	3530038	16.054	1.819 #
7) T MCPA	6.773	7.224	-26412708	33971365	N.D.	11.019
8) T DICHLORPROP	7.109	7.556	55483437	45381395	23.716	62.124 #
10) T Pentachlo...	7.531	8.303f	366.6E6	49530278	11.255	4.661 #
12) T 2,4,5-T	8.301	8.989	531.5E6	11508291	40.648	2.884 #
13) T 2,4-DB	8.807	9.490	391.2E6	129.7E6	186.016	266.020 #
14) T DINOSEB	9.783f	9.800	1304.6E6	163.6E6	132.283	57.386 #
15) T Picloram	9.702	10.778	73411371	233.1E6	4.127	38.371 #
16) T DCPA	10.127	10.778f	93640074	233.1E6	5.472	46.391 #

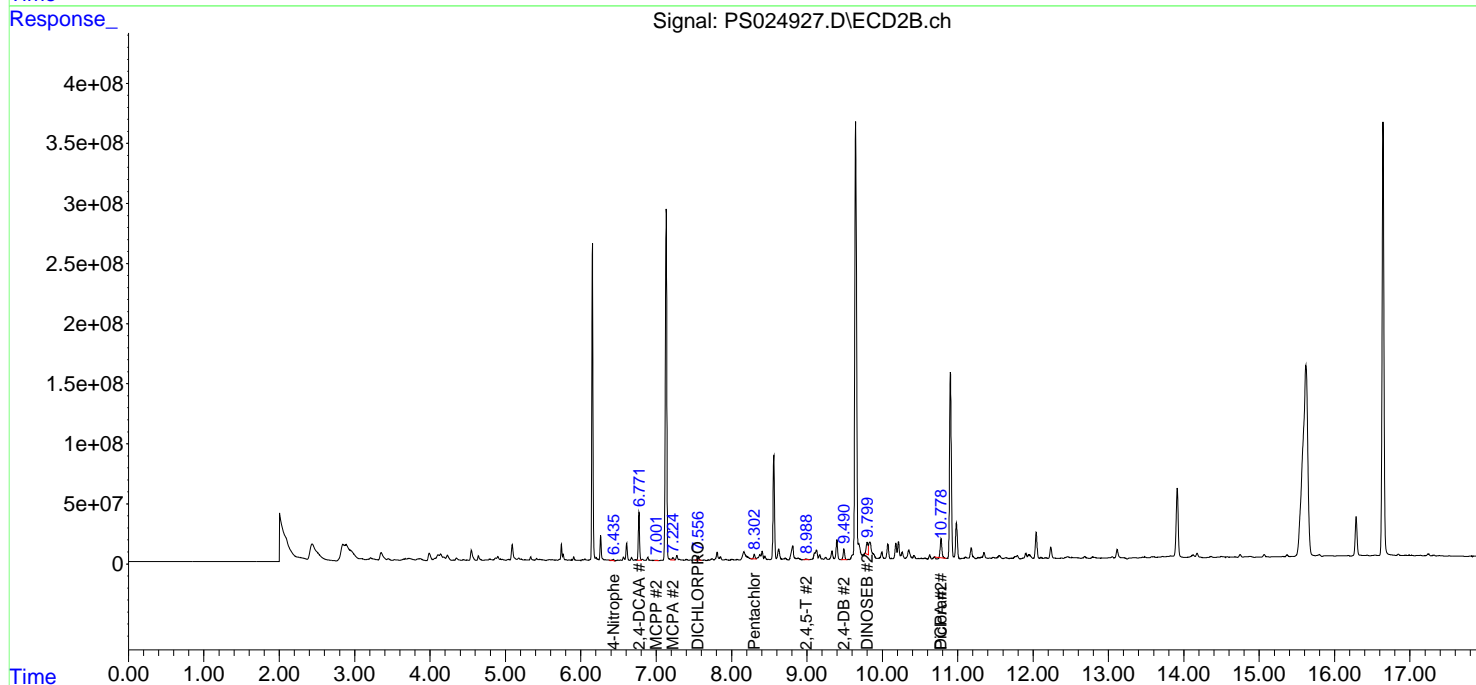
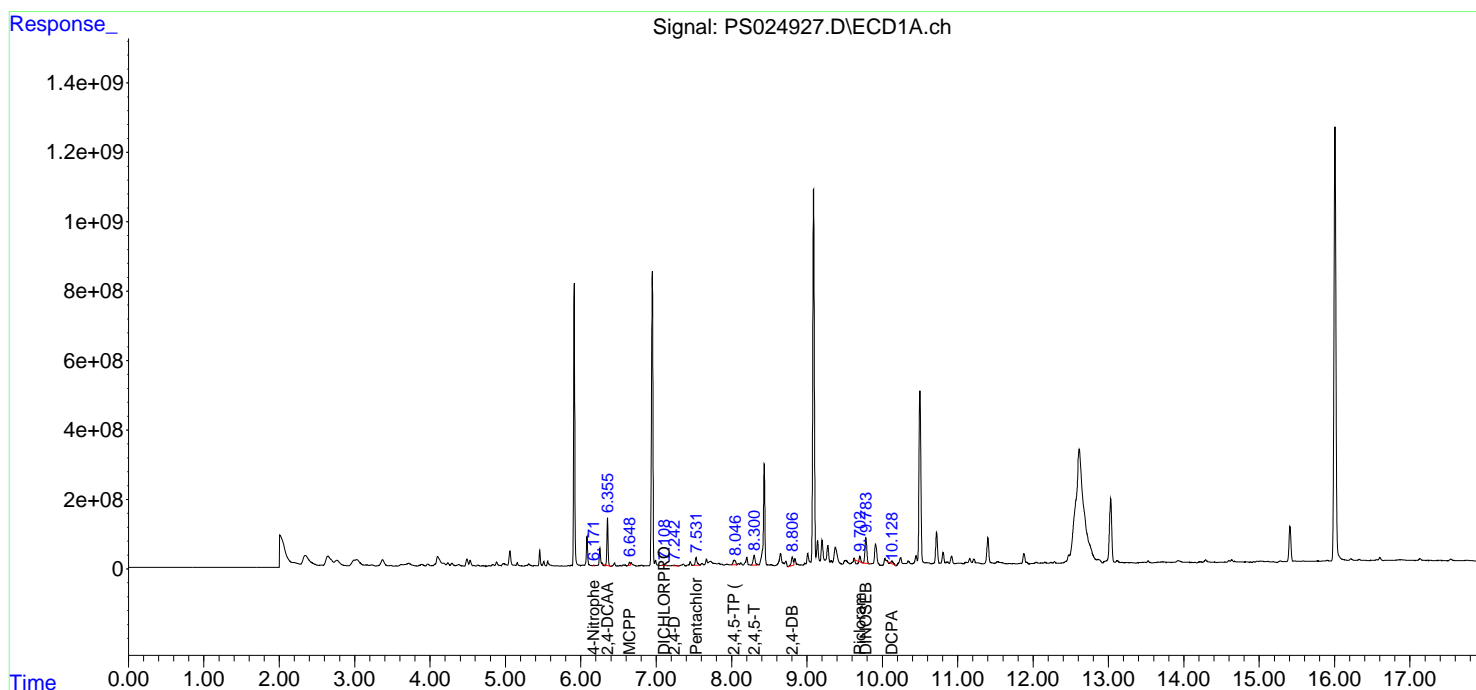
(f)=RT Delta > 1/2 Window (#)=Amounts differ by > 25% (m)=manual int.

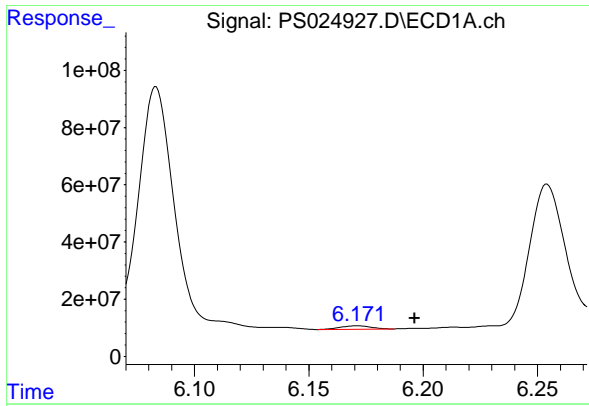
Data Path : Z:\pestpcbsrv\HPCHEM1\ECD_S\Data\PS112123\
 Data File : PS024927.D
 Signal(s) : Signal #1: ECD1A.ch Signal #2: ECD2B.ch
 Acq On : 22 Nov 2023 01:39
 Operator : AR\AJ
 Sample : 05468-09
 Misc :
 ALS Vial : 38 Sample Multiplier: 1

Instrument :
 ECD_S
 ClientSampleId :

Integration File signal 1: autoint1.e
 Integration File signal 2: autoint2.e
 Quant Time: Nov 22 02:29:06 2023
 Quant Method : Z:\pestpcbsrv\HPCHEM1\ECD_S\Method\PS110323.M
 Quant Title : 8080.M
 QLast Update : Fri Nov 03 15:07:01 2023
 Response via : Initial Calibration
 Integrator: ChemStation

Volume Inj. : 2 µl
 Signal #1 Phase : Rtx-CLPesticides Signal #2 Phase: Rtx-CLPesticides2
 Signal #1 Info : 30M x 0.32mm x 0.5 Signal #2 Info : 30M x 0.32mm x 0.25µm

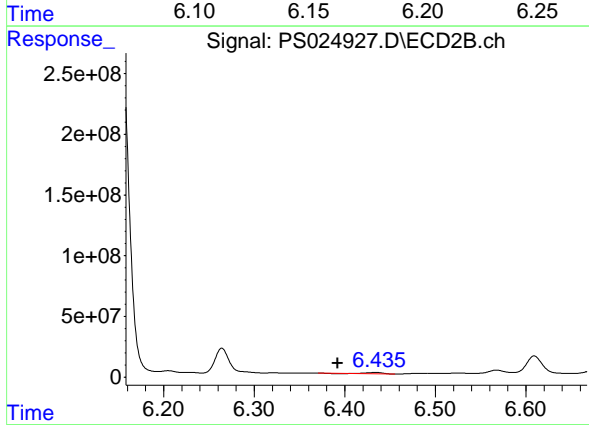




#3 4-Nitrophenol

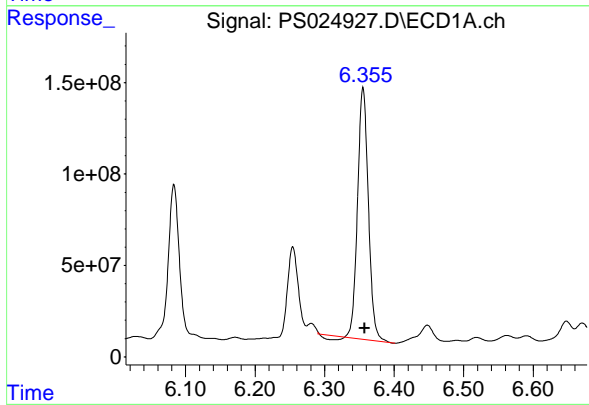
R.T.: 6.171 min
Delta R.T.: -0.025 min
Response: 10980938
Conc: 8.47 ng/ml

Instrument :
ECD_S
ClientSampleId :



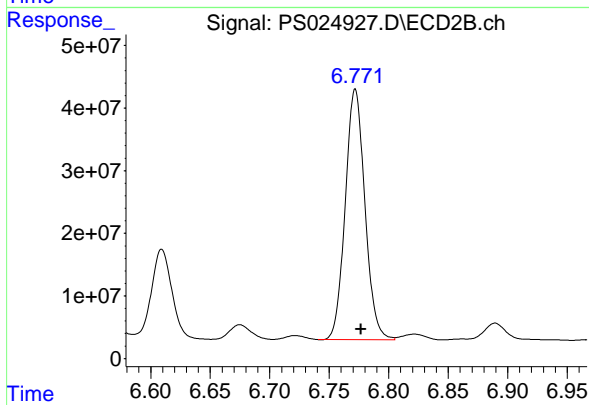
#3 4-Nitrophenol

R.T.: 6.435 min
Delta R.T.: 0.043 min
Response: 10990916
Conc: 25.03 ng/ml



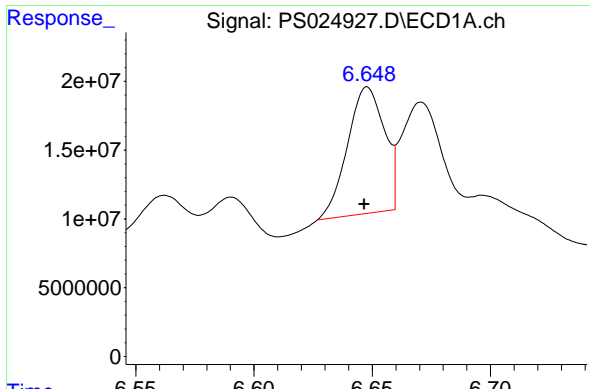
#4 2,4-DCAA

R.T.: 6.355 min
Delta R.T.: -0.002 min
Response: 1477581569
Conc: 723.77 ng/ml



#4 2,4-DCAA

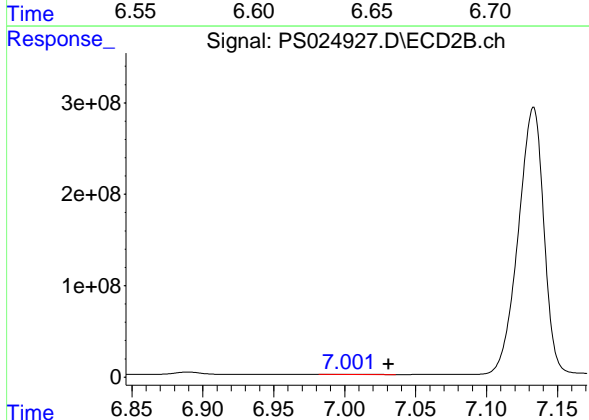
R.T.: 6.772 min
Delta R.T.: -0.005 min
Response: 460159459
Conc: 682.12 ng/ml



#6 MCPP

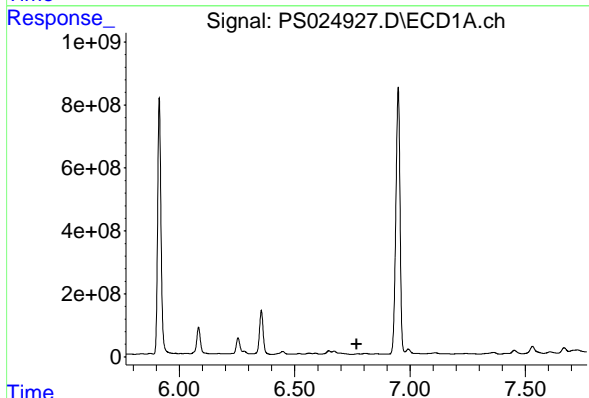
R.T.: 6.648 min
 Delta R.T.: 0.001 min
 Response: 100013624
 Conc: 16.05 ug/ml

Instrument :
 ECD_S
 ClientSampleId :



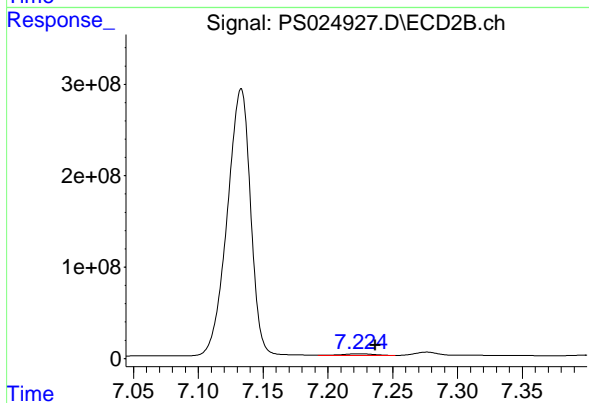
#6 MCPP

R.T.: 7.000 min
 Delta R.T.: -0.032 min
 Response: 3530038
 Conc: 1.82 ug/ml



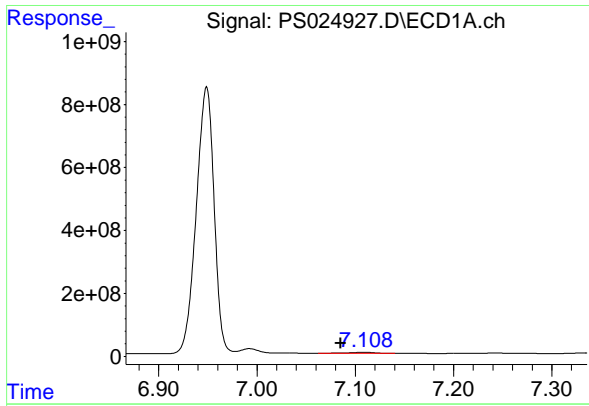
#7 MCPA

R.T.: 6.773 min
 Delta R.T.: 0.005 min
 Response: -26412708
 Conc: N.D.



#7 MCPA

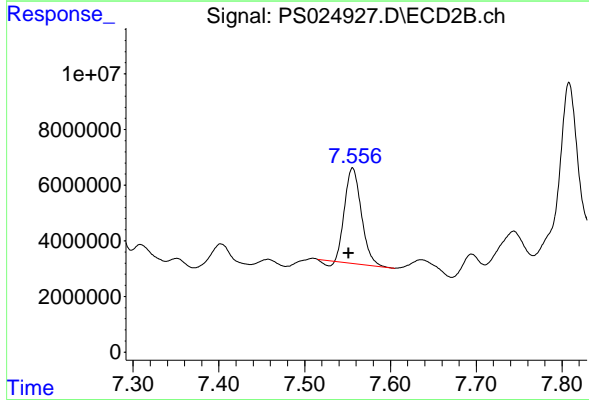
R.T.: 7.224 min
 Delta R.T.: -0.013 min
 Response: 33971365
 Conc: 11.02 ug/ml



#8 DICHLORPROP

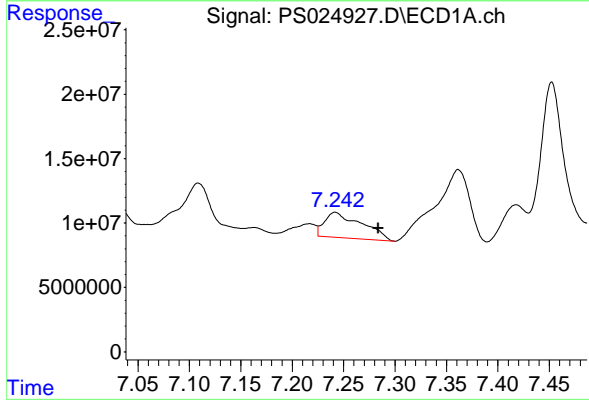
R.T.: 7.109 min
 Delta R.T.: 0.023 min
 Response: 55483437
 Conc: 23.72 ng/ml

Instrument :
 ECD_S
 ClientSampleId :



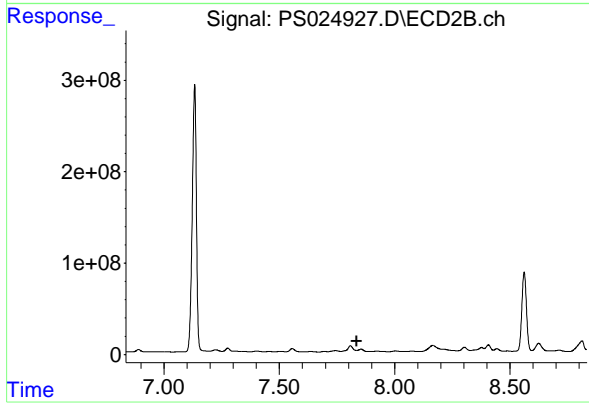
#8 DICHLORPROP

R.T.: 7.556 min
 Delta R.T.: 0.005 min
 Response: 45381395
 Conc: 62.12 ng/ml



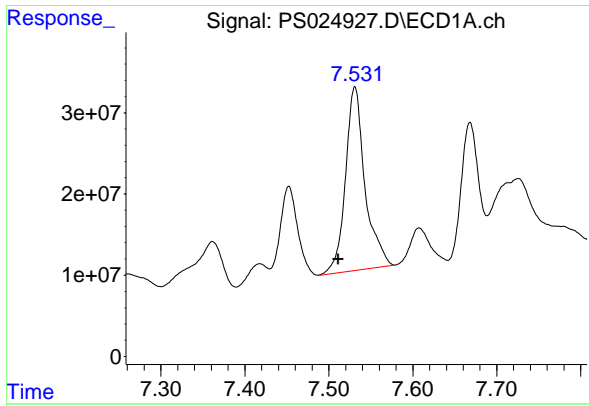
#9 2,4-D

R.T.: 7.242 min
 Delta R.T.: -0.042 min
 Response: 49460213
 Conc: 17.99 ng/ml



#9 2,4-D

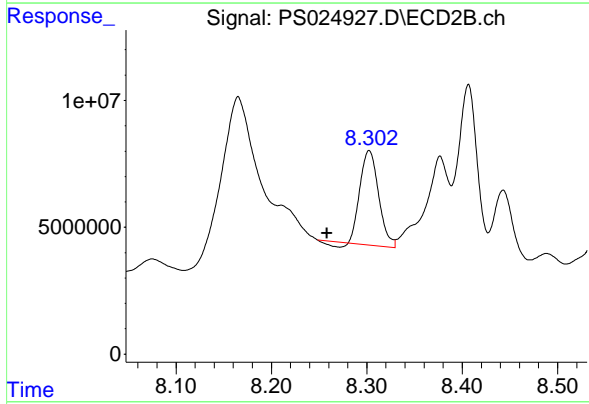
R.T.: 7.854 min
 Delta R.T.: 0.020 min
 Response: -37525623
 Conc: N.D.



#10 Pentachlorophenol

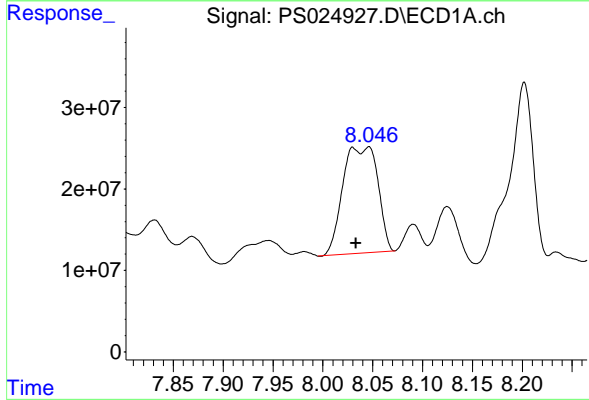
R.T.: 7.531 min
 Delta R.T.: 0.020 min
 Response: 366649000
 Conc: 11.25 ng/ml

Instrument :
 ECD_S
 ClientSampleId :



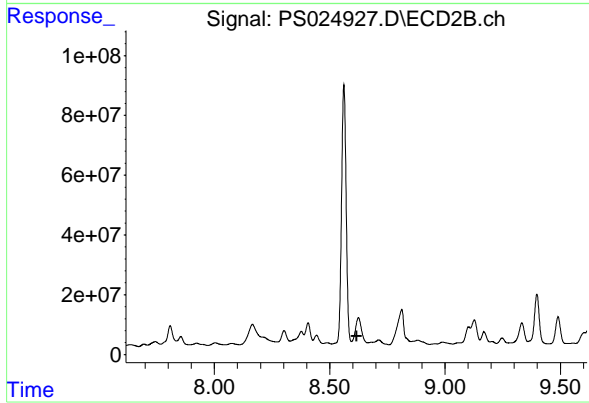
#10 Pentachlorophenol

R.T.: 8.303 min
 Delta R.T.: 0.044 min
 Response: 49530278
 Conc: 4.66 ng/ml



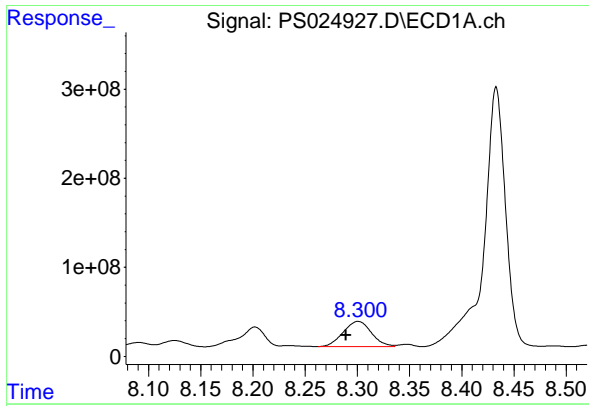
#11 2,4,5-TP (SILVEX)

R.T.: 8.031 min
 Delta R.T.: -0.002 min
 Response: 318698119
 Conc: 22.92 ng/ml



#11 2,4,5-TP (SILVEX)

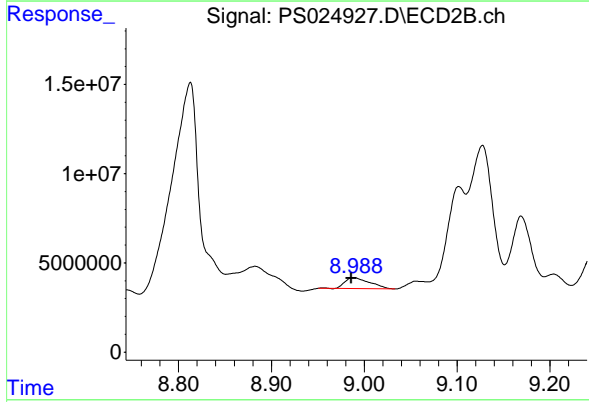
R.T.: 8.625 min
 Delta R.T.: 0.008 min
 Response: -763661850
 Conc: N.D.



#12 2,4,5-T

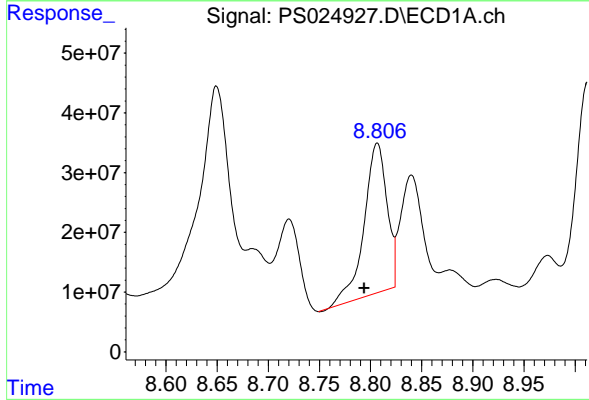
R.T.: 8.301 min
 Delta R.T.: 0.012 min
 Response: 531483755
 Conc: 40.65 ng/ml

Instrument :
 ECD_S
 ClientSampleId :



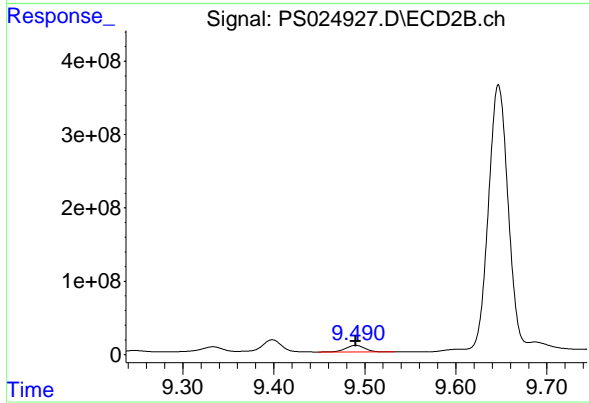
#12 2,4,5-T

R.T.: 8.989 min
 Delta R.T.: 0.003 min
 Response: 11508291
 Conc: 2.88 ng/ml



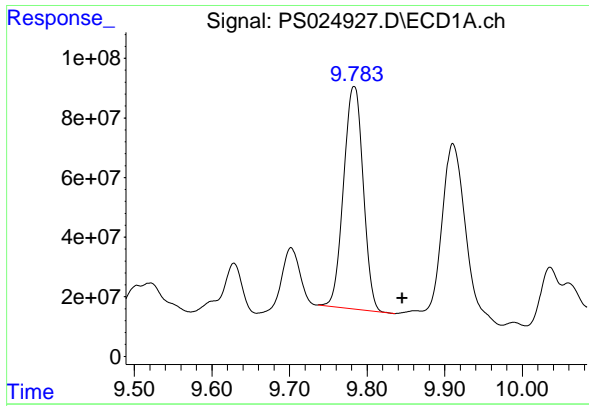
#13 2,4-DB

R.T.: 8.807 min
 Delta R.T.: 0.013 min
 Response: 391163698
 Conc: 186.02 ng/ml



#13 2,4-DB

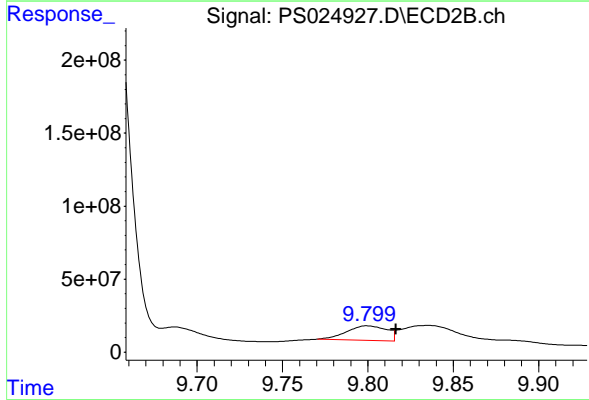
R.T.: 9.490 min
 Delta R.T.: 0.000 min
 Response: 129700170
 Conc: 266.02 ng/ml



#14 DINOSEB

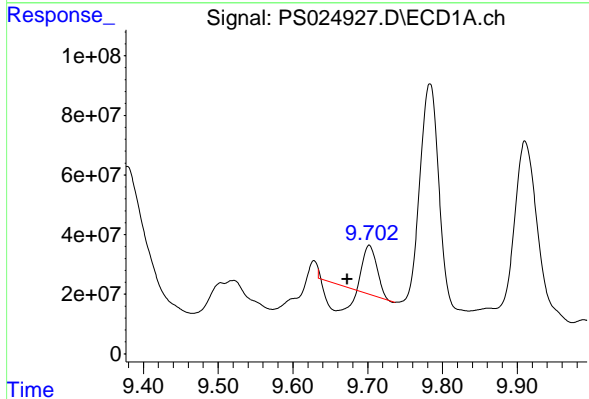
R.T.: 9.783 min
 Delta R.T.: -0.062 min
 Response: 1304582127
 Conc: 132.28 ng/ml

Instrument :
 ECD_S
 ClientSampleId :



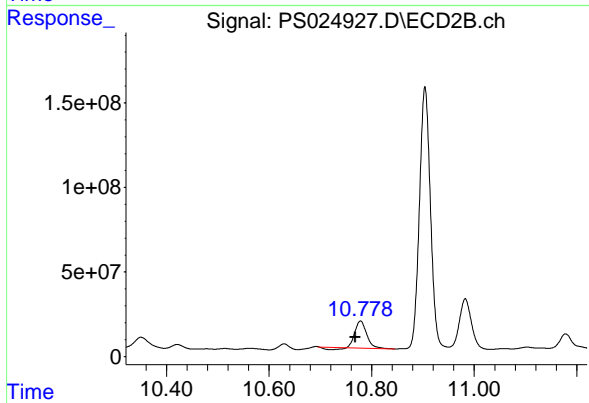
#14 DINOSEB

R.T.: 9.800 min
 Delta R.T.: -0.017 min
 Response: 163614078
 Conc: 57.39 ng/ml



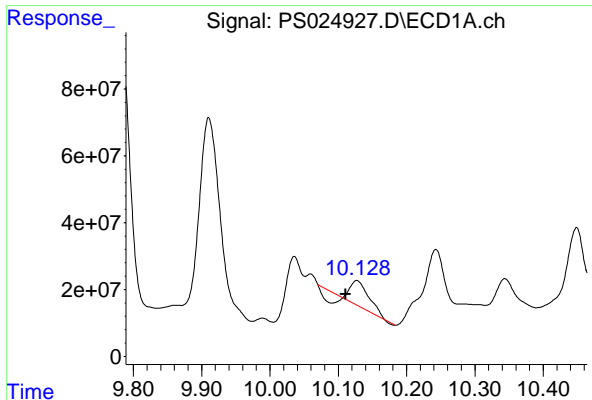
#15 Picloram

R.T.: 9.702 min
 Delta R.T.: 0.030 min
 Response: 73411371
 Conc: 4.13 ng/ml



#15 Picloram

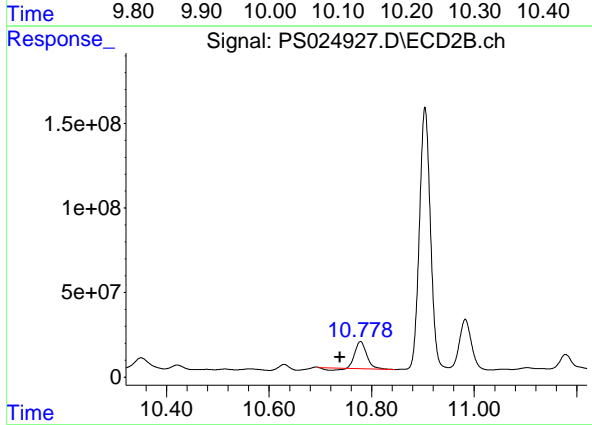
R.T.: 10.778 min
 Delta R.T.: 0.011 min
 Response: 233144593
 Conc: 38.37 ng/ml



#16 DCPA

R.T.: 10.127 min
Delta R.T.: 0.016 min
Response: 93640074
Conc: 5.47 ng/ml

Instrument :
ECD_S
ClientSampleId :



#16 DCPA

R.T.: 10.778 min
Delta R.T.: 0.040 min
Response: 233144593
Conc: 46.39 ng/ml