

Data Path : Z:\pestpcbsrv\HPCHEM1\ECD\_S\Data\PS112123\  
 Data File : PS024928.D  
 Signal(s) : Signal #1: ECD1A.ch Signal #2: ECD2B.ch  
 Acq On : 22 Nov 2023 02:03  
 Operator : AR\AJ  
 Sample : I.BLK  
 Misc :  
 ALS Vial : 2 Sample Multiplier: 1

Instrument :  
 ECD\_S  
 ClientSampleId :

Integration File signal 1: autoint1.e  
 Integration File signal 2: autoint2.e  
 Quant Time: Nov 22 02:29:16 2023  
 Quant Method : Z:\pestpcbsrv\HPCHEM1\ECD\_S\Method\PS110323.M  
 Quant Title : 8080.M  
 QLast Update : Fri Nov 03 15:07:01 2023  
 Response via : Initial Calibration  
 Integrator: ChemStation

Volume Inj. : 2 µl  
 Signal #1 Phase : Rtx-CLPesticides Signal #2 Phase: Rtx-CLPesticides2  
 Signal #1 Info : 30M x 0.32mm x0.5 Signal #2 Info : 30M x 0.32mm x 0.25µm

Compound	RT#1	RT#2	Resp#1	Resp#2	ng/ml	ng/ml
-----						
System Monitoring Compounds						
4) S 2,4-DCAA	6.355	6.772	1262.5E6	413.0E6	618.416	612.159
Target Compounds						
1) T Dalapon	2.511	2.563	7572153	3653668	3.143	3.468
2) T 3,5-DICHL...	5.697	0.000	3709405	0	1.183	N.D. #
3) T 4-Nitroph...	6.198	0.000	10606580	0	8.183	N.D. #
5) T DICAMBA	0.000	6.974	0	3587678	N.D.	1.235
6) T MCPP	6.676	7.078f	8596337	5332248	1.380	2.748 #
8) T DICHLORPROP	0.000	7.558	0	5159251	N.D.	7.063
9) T 2,4-D	7.245	7.855	26308917	453643	9.571	<MDL #
10) T Pentachlo...	0.000	8.301f	0	1555072	N.D.	<MDL
11) T 2,4,5-TP ...	0.000	8.614	0	715870	N.D.	<MDL
12) T 2,4,5-T	0.000	8.983	0	366268	N.D.	<MDL
13) T 2,4-DB	8.735f	9.461	3553341	881006	1.690	1.807
14) T DINOSEB	0.000	9.881f	0	495994	N.D.	<MDL
15) T Picloram	9.650	10.763	23703876	12594716	1.333	2.073 #
16) T DCPA	10.128	10.763	39894855	12594716	2.331	2.506
-----						

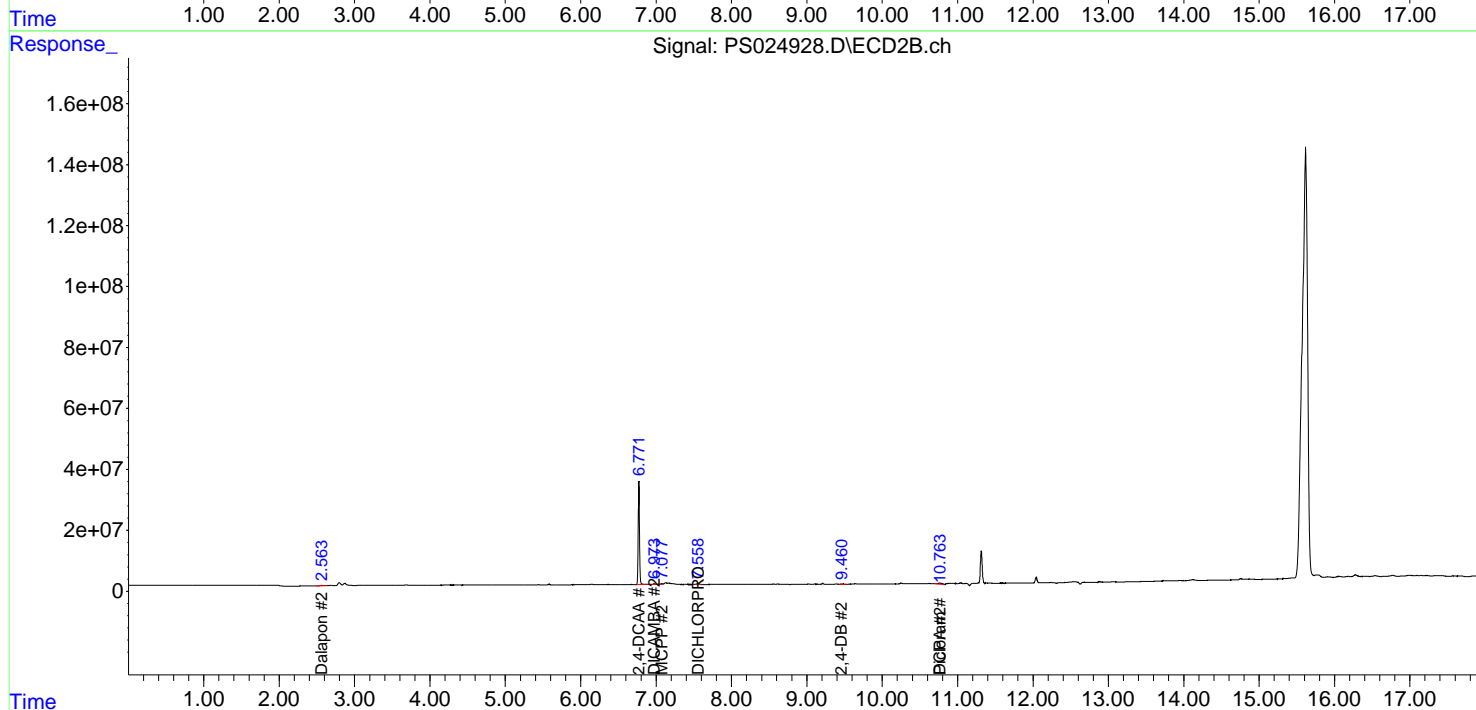
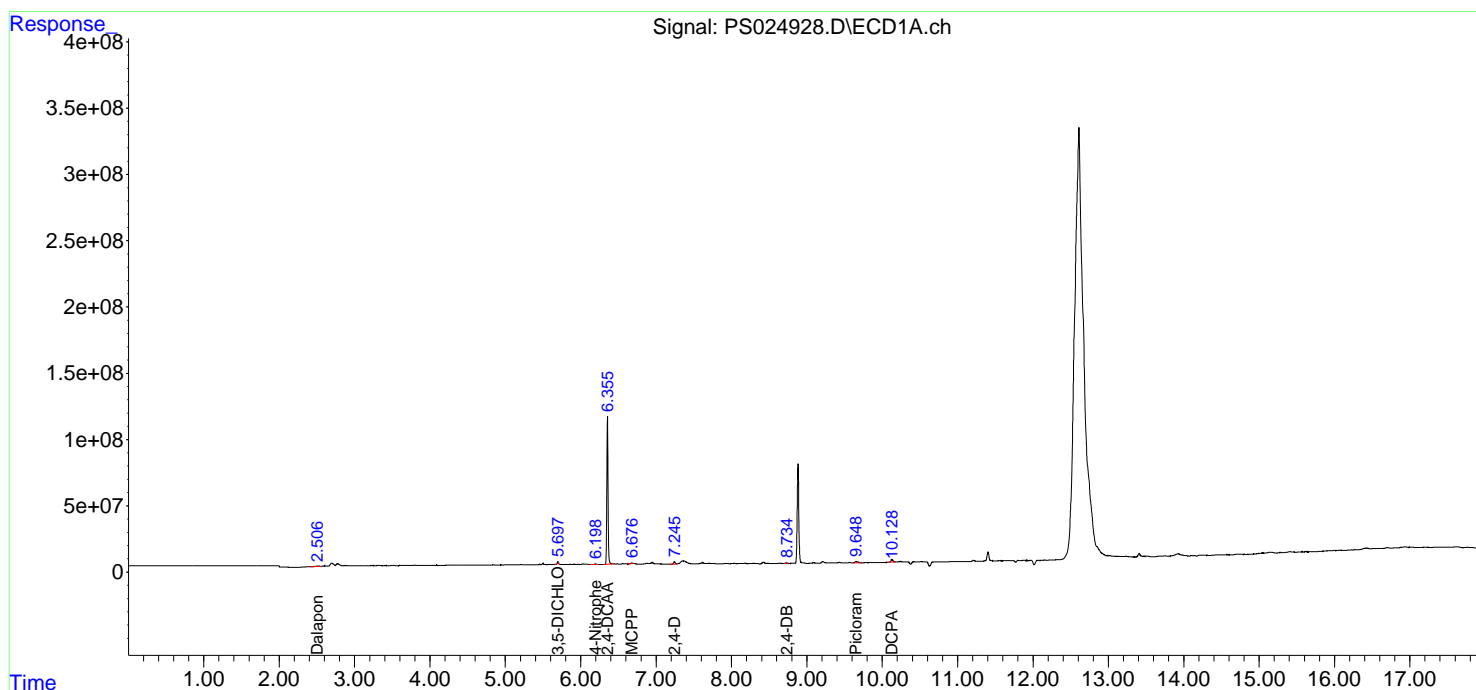
(f)=RT Delta > 1/2 Window (#)=Amounts differ by > 25% (m)=manual int.

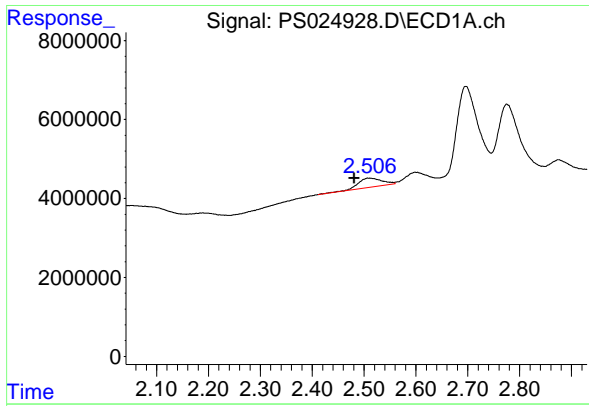
Data Path : Z:\pestpcbsrv\HPCHEM1\ECD\_S\Data\PS112123\  
 Data File : PS024928.D  
 Signal(s) : Signal #1: ECD1A.ch Signal #2: ECD2B.ch  
 Acq On : 22 Nov 2023 02:03  
 Operator : AR\AJ  
 Sample : I.BLK  
 Misc :  
 ALS Vial : 2 Sample Multiplier: 1

Instrument :  
 ECD\_S  
 ClientSampleId :

Integration File signal 1: autoint1.e  
 Integration File signal 2: autoint2.e  
 Quant Time: Nov 22 02:29:16 2023  
 Quant Method : Z:\pestpcbsrv\HPCHEM1\ECD\_S\Method\PS110323.M  
 Quant Title : 8080.M  
 QLast Update : Fri Nov 03 15:07:01 2023  
 Response via : Initial Calibration  
 Integrator: ChemStation

Volume Inj. : 2 µl  
 Signal #1 Phase : Rtx-CLPesticides Signal #2 Phase: Rtx-CLPesticides2  
 Signal #1 Info : 30M x 0.32mm x0.5 Signal #2 Info : 30M x 0.32mm x 0.25µm

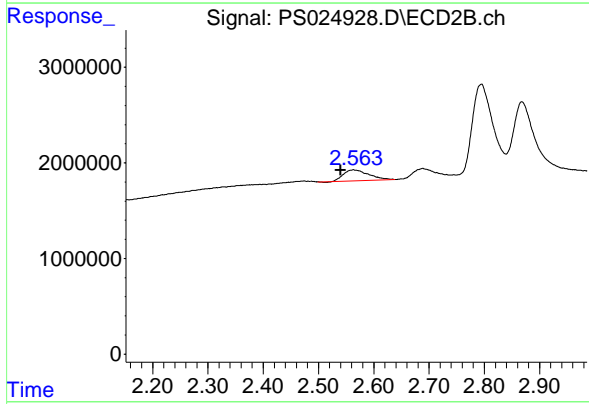




#1 Dalapon

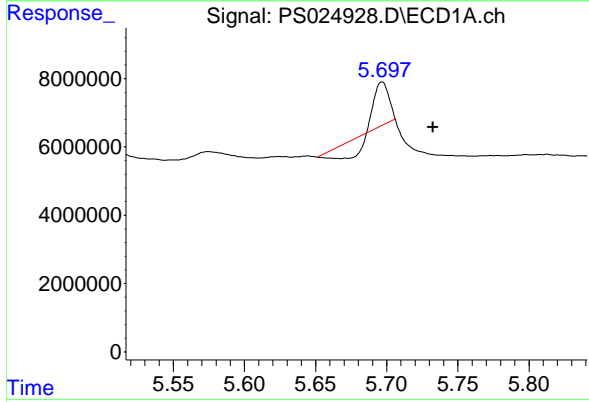
R.T.: 2.511 min  
 Delta R.T.: 0.030 min  
 Response: 7572153  
 Conc: 3.14 ng/ml

Instrument :  
 ECD\_S  
 ClientSampleId :



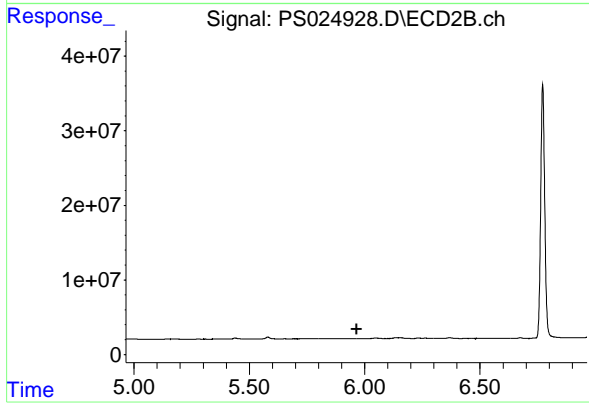
#1 Dalapon

R.T.: 2.563 min  
 Delta R.T.: 0.023 min  
 Response: 3653668  
 Conc: 3.47 ng/ml



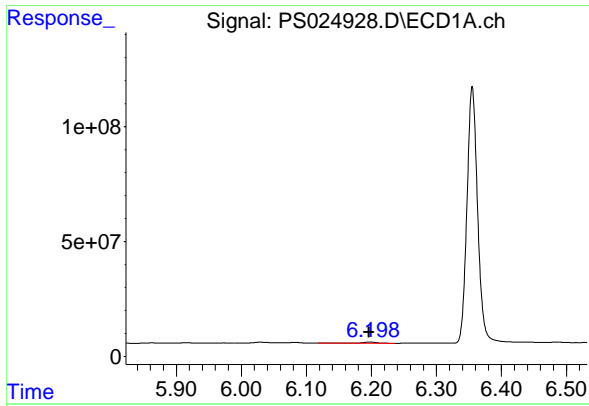
#2 3,5-DICHLOROBENZOIC ACID

R.T.: 5.697 min  
 Delta R.T.: -0.036 min  
 Response: 3709405  
 Conc: 1.18 ng/ml



#2 3,5-DICHLOROBENZOIC ACID

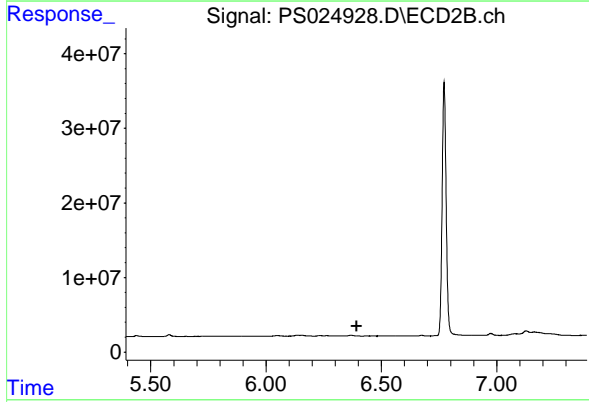
R.T.: 0.000 min  
 Exp R.T. : 5.964 min  
 Response: 0  
 Conc: N.D.



#3 4-Nitrophenol

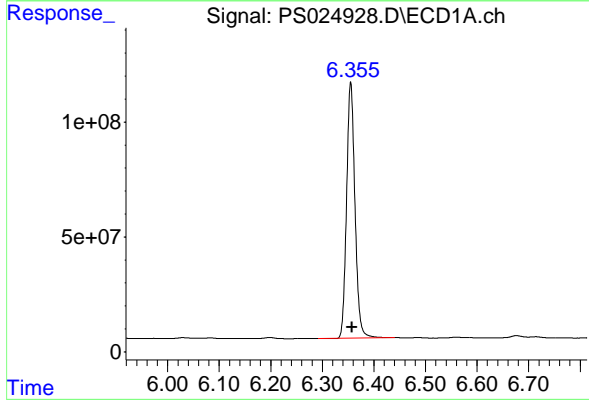
R.T.: 6.198 min  
 Delta R.T.: 0.002 min  
 Response: 10606580  
 Conc: 8.18 ng/ml

Instrument :  
 ECD\_S  
 ClientSampleId :



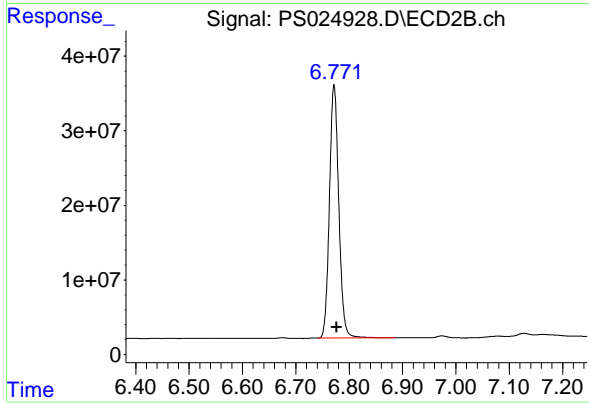
#3 4-Nitrophenol

R.T.: 0.000 min  
 Exp R.T. : 6.392 min  
 Response: 0  
 Conc: N.D.



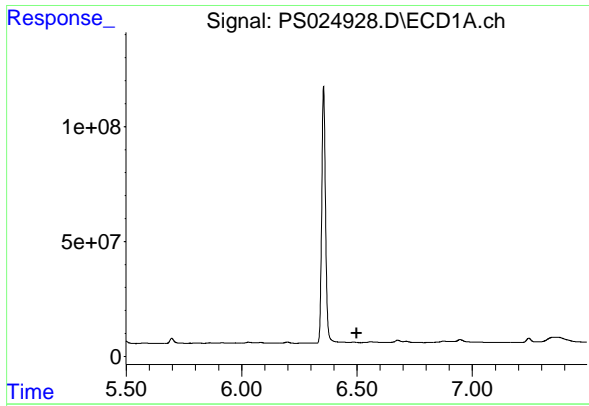
#4 2,4-DCAA

R.T.: 6.355 min  
 Delta R.T.: -0.002 min  
 Response: 1262497527  
 Conc: 618.42 ng/ml



#4 2,4-DCAA

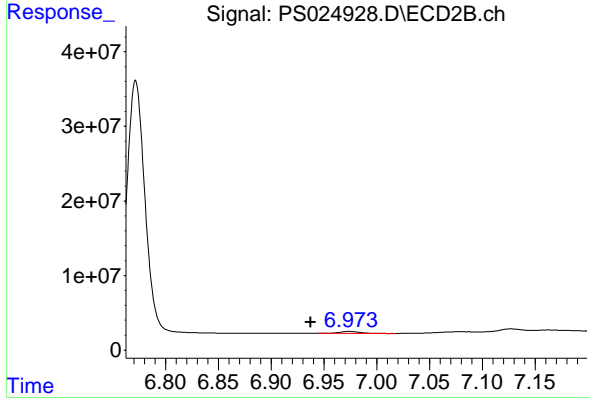
R.T.: 6.772 min  
 Delta R.T.: -0.005 min  
 Response: 412961957  
 Conc: 612.16 ng/ml



#5 DICAMBA

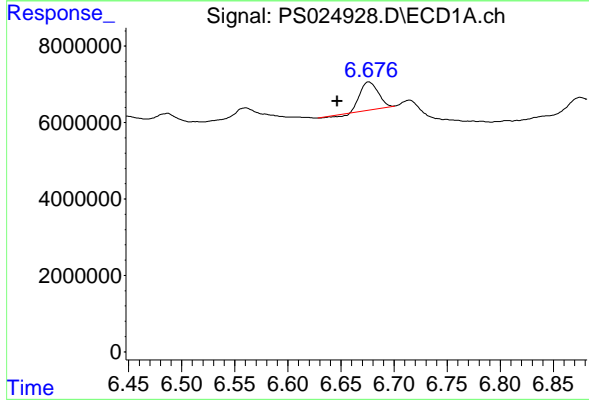
R.T.: 0.000 min  
 Exp R.T.: 6.498 min  
 Response: 0  
 Conc: N.D.

Instrument :  
 ECD\_S  
 ClientSampleId :



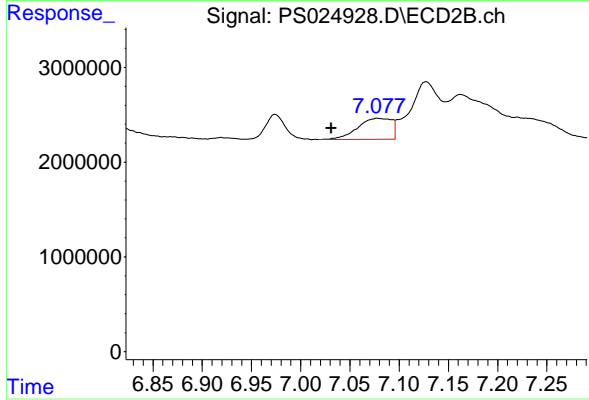
#5 DICAMBA

R.T.: 6.974 min  
 Delta R.T.: 0.036 min  
 Response: 3587678  
 Conc: 1.23 ng/ml



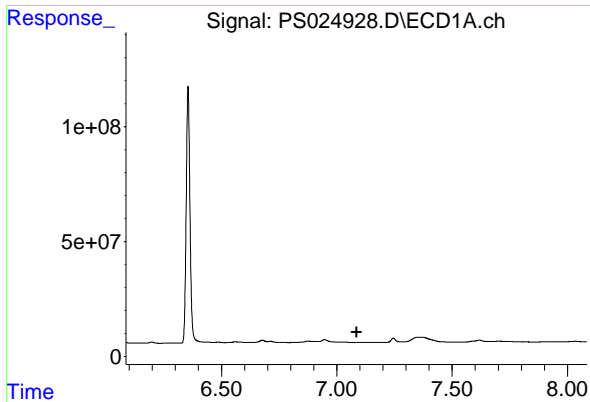
#6 MCPP

R.T.: 6.676 min  
 Delta R.T.: 0.030 min  
 Response: 8596337  
 Conc: 1.38 ug/ml



#6 MCPP

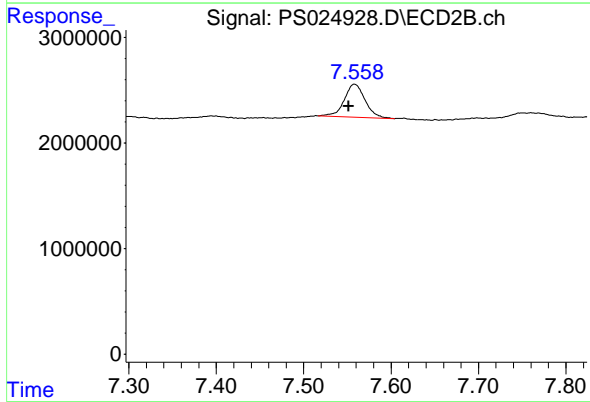
R.T.: 7.078 min  
 Delta R.T.: 0.047 min  
 Response: 5332248  
 Conc: 2.75 ug/ml



#8 DICHLORPROP

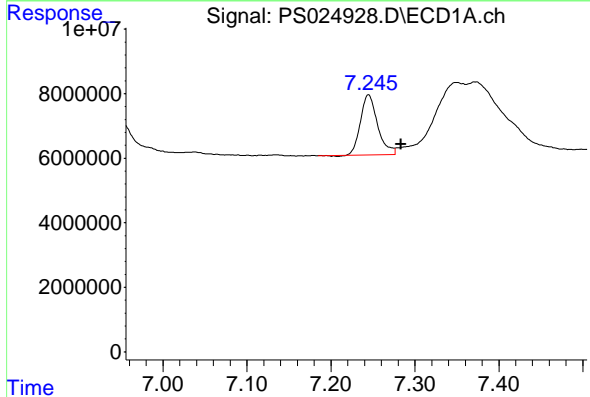
R.T.: 0.000 min  
 Exp R.T.: 7.085 min  
 Response: 0  
 Conc: N.D.

Instrument :  
 ECD\_S  
 ClientSampleId :



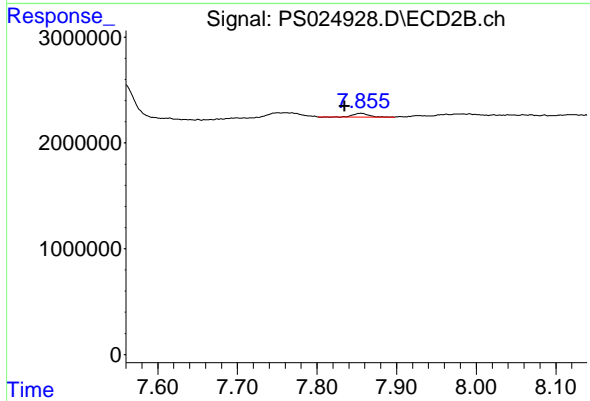
#8 DICHLORPROP

R.T.: 7.558 min  
 Delta R.T.: 0.007 min  
 Response: 5159251  
 Conc: 7.06 ng/ml



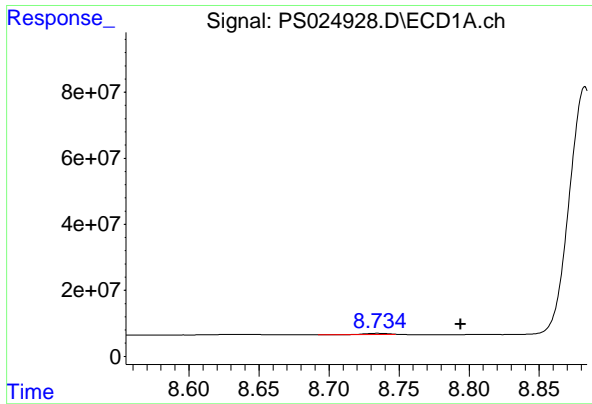
#9 2,4-D

R.T.: 7.245 min  
 Delta R.T.: -0.039 min  
 Response: 26308917  
 Conc: 9.57 ng/ml



#9 2,4-D

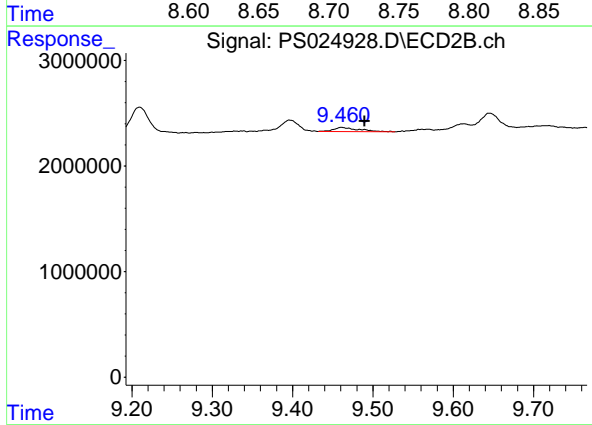
R.T.: 7.855 min  
 Delta R.T.: 0.020 min  
 Response: 453643  
 Conc: N.D.



#13 2,4-DB

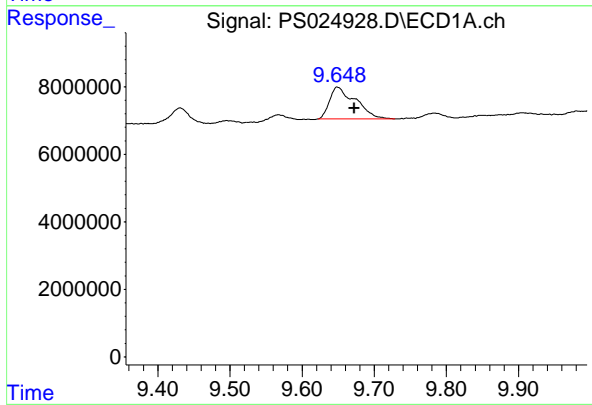
R.T.: 8.735 min  
 Delta R.T.: -0.059 min  
 Response: 3553341  
 Conc: 1.69 ng/ml

Instrument : ECD\_S  
 ClientSampleId :



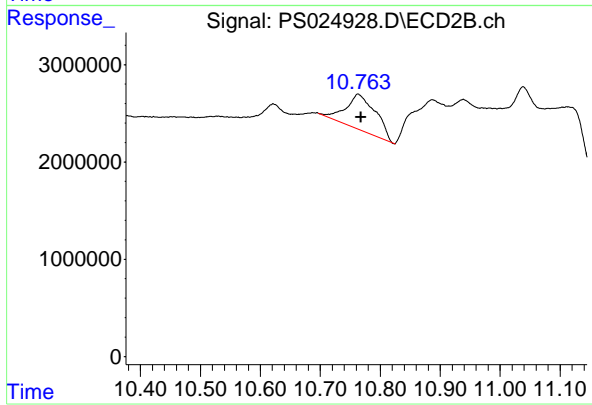
#13 2,4-DB

R.T.: 9.461 min  
 Delta R.T.: -0.029 min  
 Response: 881006  
 Conc: 1.81 ng/ml



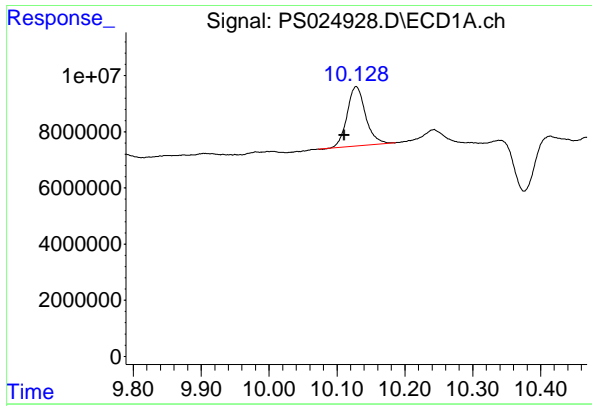
#15 Picloram

R.T.: 9.650 min  
 Delta R.T.: -0.023 min  
 Response: 23703876  
 Conc: 1.33 ng/ml



#15 Picloram

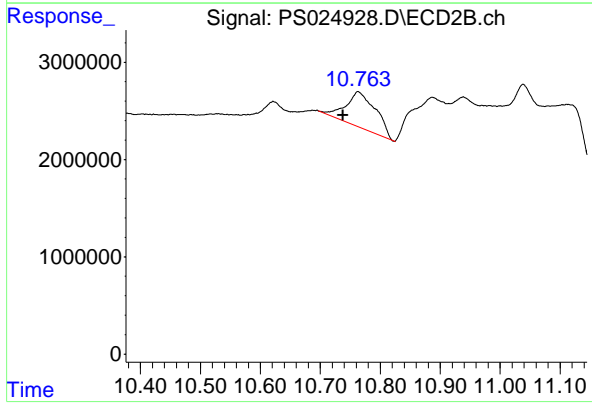
R.T.: 10.763 min  
 Delta R.T.: -0.005 min  
 Response: 12594716  
 Conc: 2.07 ng/ml



#16 DCPA

R.T.: 10.128 min  
Delta R.T.: 0.017 min  
Response: 39894855  
Conc: 2.33 ng/ml

Instrument :  
ECD\_S  
ClientSampleId :



#16 DCPA

R.T.: 10.763 min  
Delta R.T.: 0.025 min  
Response: 12594716  
Conc: 2.51 ng/ml