

Data Path : Z:\pestpcbsrv\HPCHEM1\ECD\_S\Data\PS112219\  
 Data File : PS007790.D  
 Signal(s) : Signal #1: ECD1A.ch Signal #2: ECD2B.ch  
 Acq On : 22 Nov 2019 19:05  
 Operator : SM\AJ  
 Sample : K5937-01  
 Misc :  
 ALS Vial : 11 Sample Multiplier: 1

**Instrument :**  
 ECD\_S  
**ClientSampleId :**  
 RT-1488-RT4221-RBR200031

**Manual Integrations**  
**APPROVED**

Ankita  
 11/25/2019 11:48:12 AM

Integration File signal 1: autoint1.e  
 Integration File signal 2: autoint2.e  
 Quant Time: Nov 23 02:45:11 2019  
 Quant Method : Z:\pestpcbsrv\HPCHEM1\ECD\_S\Method\PS110619.M  
 Quant Title : 8080.M  
 QLast Update : Wed Nov 06 02:45:11 2019  
 Response via : Initial Calibration  
 Integrator: ChemStation

Volume Inj. : 2 µl  
 Signal #1 Phase : Rtx-CLPesticides Signal #2 Phase: Rtx-CLPesticides2  
 Signal #1 Info : 30M x 0.32mm x0.5 Signal #2 Info : 30M x 0.32mm x 0.25µm

Compound	RT#1	RT#2	Resp#1	Resp#2	ng/ml	ng/ml
-----						
System Monitoring Compounds						
4) S 2,4-DCAA	5.433	5.156	340.2E6	173.9E6	247.040	247.474m

Target Compounds

(f)=RT Delta > 1/2 Window (#)=Amounts differ by > 25% (m)=manual int.

Data Path : Z:\pestpcbsrv\HPCHEM1\ECD\_S\Data\PS112219\  
 Data File : PS007790.D  
 Signal(s) : Signal #1: ECD1A.ch Signal #2: ECD2B.ch  
 Acq On : 22 Nov 2019 19:05  
 Operator : SM\AJ  
 Sample : K5937-01  
 Misc :  
 ALS Vial : 11 Sample Multiplier: 1

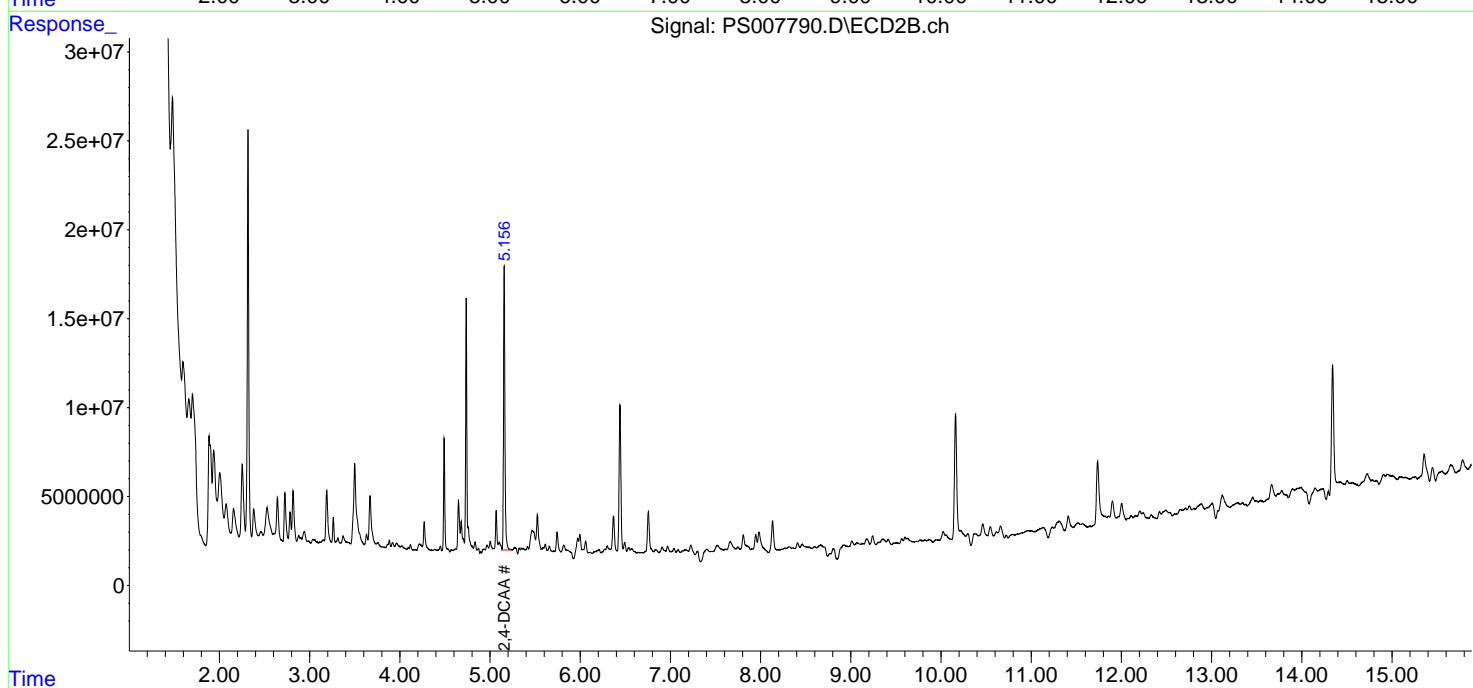
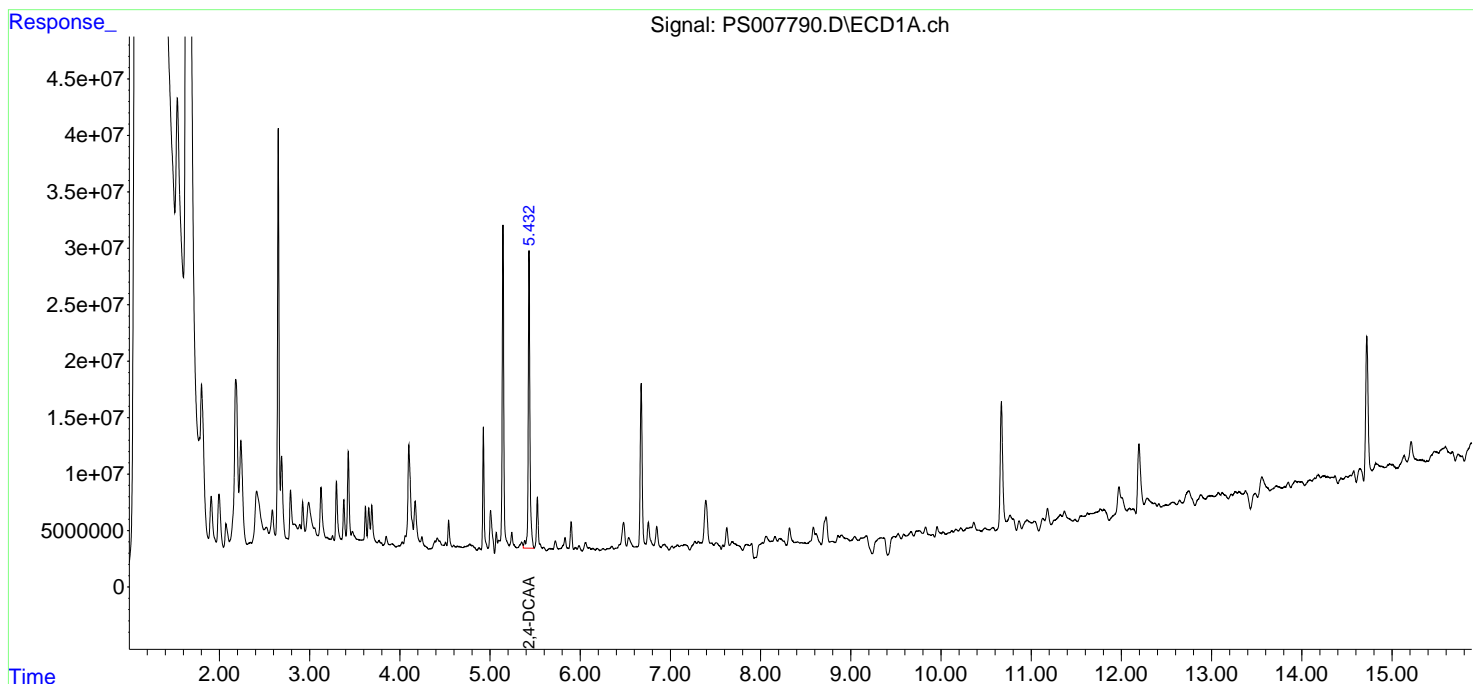
**Instrument :**  
 ECD\_S  
**ClientSampled :**  
 RT-1488-RT4221-RBR200031

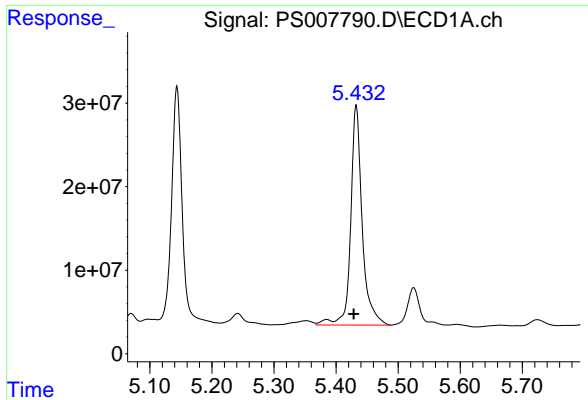
**Manual Integrations**  
**APPROVED**

Ankita  
 11/25/2019 11:48:12 AM

Integration File signal 1: autoint1.e  
 Integration File signal 2: autoint2.e  
 Quant Time: Nov 23 02:45:11 2019  
 Quant Method : Z:\pestpcbsrv\HPCHEM1\ECD\_S\Method\PS110619.M  
 Quant Title : 8080.M  
 QLast Update : Wed Nov 06 02:45:11 2019  
 Response via : Initial Calibration  
 Integrator: ChemStation

Volume Inj. : 2 µl  
 Signal #1 Phase : Rtx-CLPesticides Signal #2 Phase: Rtx-CLPesticides2  
 Signal #1 Info : 30M x 0.32mm x 0.5 Signal #2 Info : 30M x 0.32mm x 0.25µm





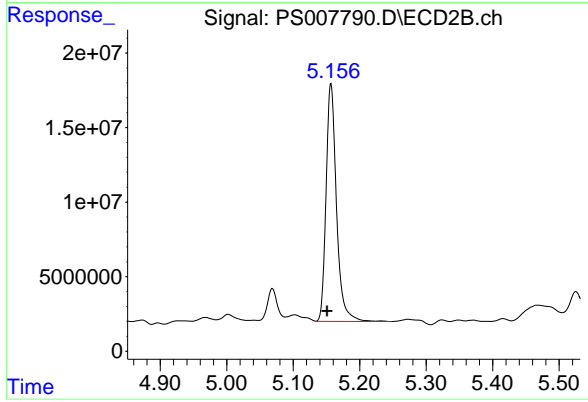
#4 2,4-DCAA

R.T.: 5.433 min  
Delta R.T.: 0.004 min  
Response: 340219725  
Conc: 247.04 ng/ml

Instrument :  
ECD\_S  
ClientSampleId :  
RT-1488-RT4221-RBR200031

Manual Integrations  
APPROVED

Ankita  
11/25/2019 11:48:12 AM



#4 2,4-DCAA

R.T.: 5.156 min  
Delta R.T.: 0.005 min  
Response: 173866075  
Conc: 247.47 ng/ml m