

Data Path : Z:\pestpcbsrv\HPCHEM1\ECD_S\Data\PS112320\
 Data File : PS013278.D
 Signal(s) : Signal #1: ECD1A.ch Signal #2: ECD2B.ch
 Acq On : 23 Nov 2020 13:10
 Operator : DD\AJ
 Sample : PB133137BSD
 Misc :
 ALS Vial : 6 Sample Multiplier: 1

Instrument :
 ECD_S
 ClientSampleId :
 PB133137BSD

Integration File signal 1: autoint1.e
 Integration File signal 2: autoint2.e
 Quant Time: Nov 23 16:01:34 2020
 Quant Method : Z:\pestpcbsrv\HPCHEM1\ECD_S\Method\PS110220.M
 Quant Title : 8080.M
 QLast Update : Tue Nov 03 03:59:48 2020
 Response via : Initial Calibration
 Integrator: ChemStation

Volume Inj. : 2 µl
 Signal #1 Phase : Rtx-CLPesticides Signal #2 Phase: Rtx-CLPesticides2
 Signal #1 Info : 30M x 0.32mm x0.5 Signal #2 Info : 30M x 0.32mm x 0.25µm

	Compound	RT#1	RT#2	Resp#1	Resp#2	ng/ml	ng/ml

System Monitoring Compounds							
4) S	2,4-DCAA	7.209	6.911	933.5E6	489.1E6	1044.260	1257.079
Target Compounds							
1) T	Dalapon	3.032	2.623	645.9E6	583.2E6	610.471	1100.373 #
2) T	3,5-DICHL...	6.425	6.065	1156.8E6	551.5E6	939.279	896.499
3) T	4-Nitroph...	7.041	6.522	405.3E6	196.5E6	950.220	825.113
5) T	DICAMBA	7.398	7.078	3130.5E6	1482.6E6	876.588	893.126
6) T	MCP P	7.567	7.174	274.8E6	124.6E6	103.217	94.132
7) T	MCPA	7.717	7.389	352.5E6	199.8E6	92.314	93.891
8) T	DICHLORPROP	8.089	7.703	799.0E6	407.8E6	892.239	912.372
9) T	2,4-D	8.320	7.998	940.8E6	555.3E6	995.845	1046.292
10) T	Pentachlo...	8.628	8.425	11976.5E6	5062.8E6	930.559	916.142
11) T	2,4,5-TP ...	9.176	8.785	4776.3E6	2192.5E6	930.057	946.093
12) T	2,4,5-T	9.462	9.165	4664.9E6	2099.7E6	881.484	947.938
13) T	2,4-DB	10.015	9.671	528.8E6	304.2E6	627.676	937.299 #
14) T	DINOSEB	11.170	10.001	3611.7E6	1553.5E6	875.878	921.484
15) T	Picloram	11.000	10.992	5295.8E6	2913.2E6	805.361	807.107
16) T	DCPA	11.437	10.928	5426.6E6	2806.5E6	835.614	934.803

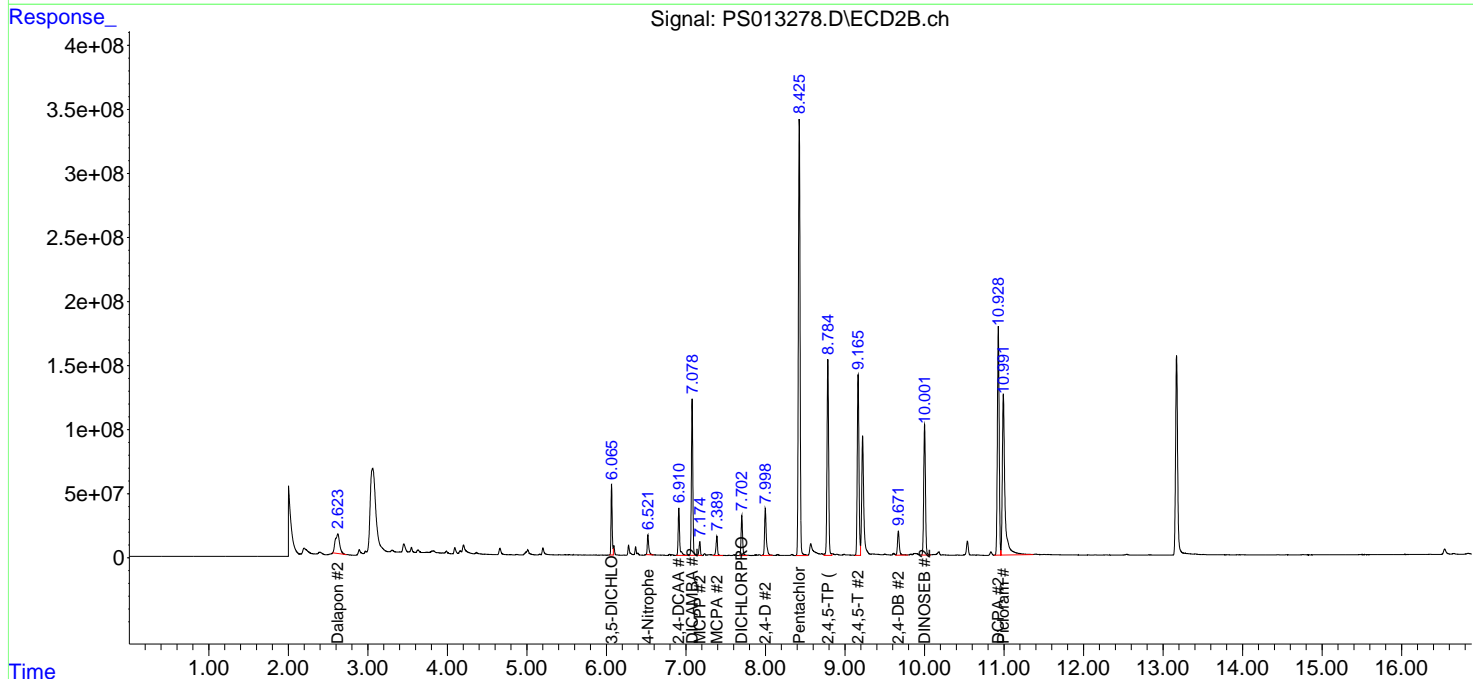
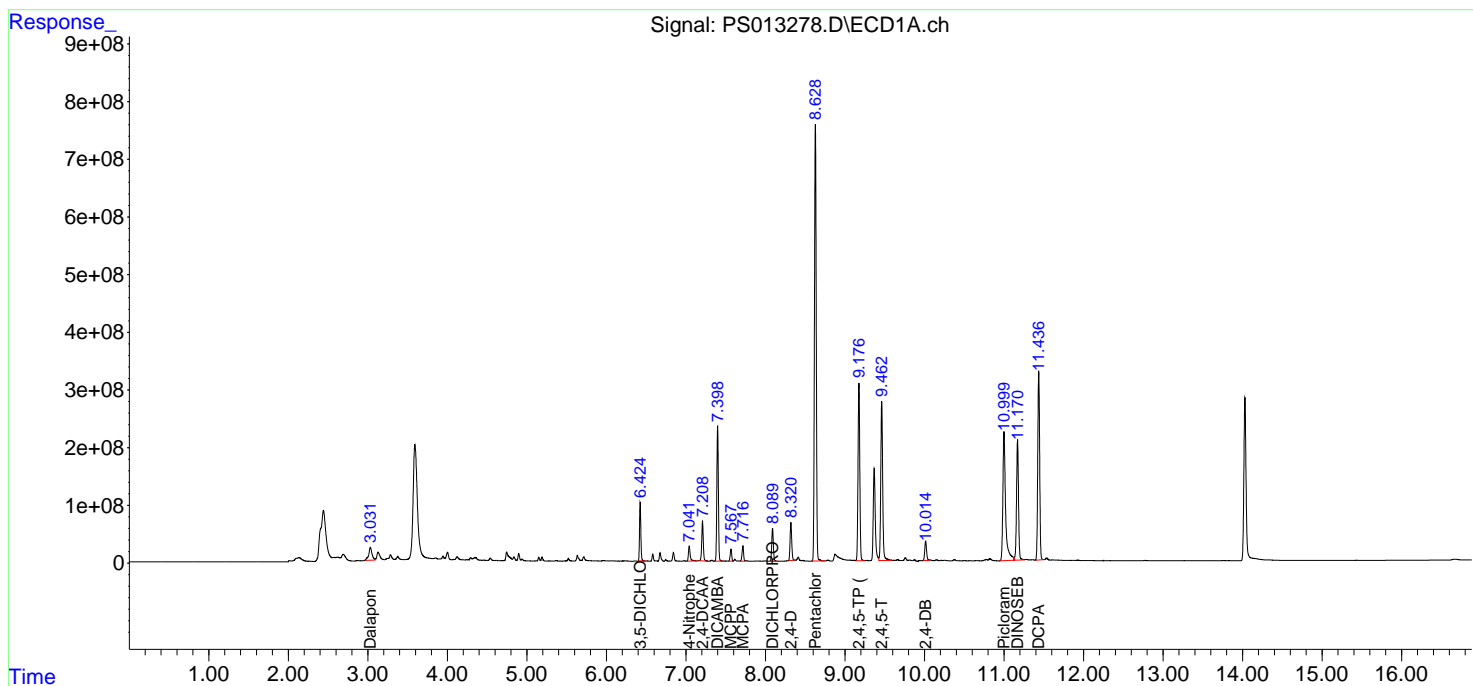
(f)=RT Delta > 1/2 Window (#)=Amounts differ by > 25% (m)=manual int.

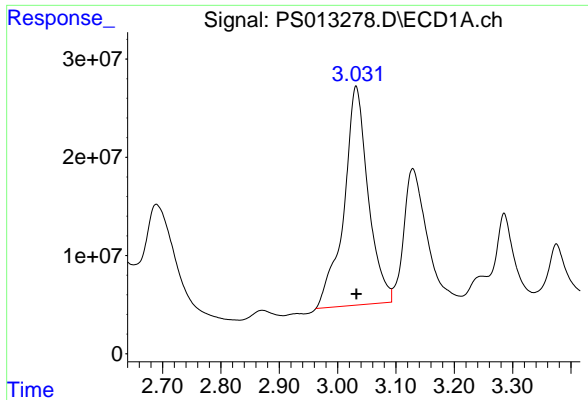
Data Path : Z:\pestpcbsrv\HPCHEM1\ECD_S\Data\PS112320\
 Data File : PS013278.D
 Signal(s) : Signal #1: ECD1A.ch Signal #2: ECD2B.ch
 Acq On : 23 Nov 2020 13:10
 Operator : DD\AJ
 Sample : PB133137BSD
 Misc :
 ALS Vial : 6 Sample Multiplier: 1

Instrument :
 ECD_S
 ClientSampled :
 PB133137BSD

Integration File signal 1: autoint1.e
 Integration File signal 2: autoint2.e
 Quant Time: Nov 23 16:01:34 2020
 Quant Method : Z:\pestpcbsrv\HPCHEM1\ECD_S\Method\PS110220.M
 Quant Title : 8080.M
 QLast Update : Tue Nov 03 03:59:48 2020
 Response via : Initial Calibration
 Integrator: ChemStation

Volume Inj. : 2 µl
 Signal #1 Phase : Rtx-CLPesticides Signal #2 Phase: Rtx-CLPesticides2
 Signal #1 Info : 30M x 0.32mm x0.5 Signal #2 Info : 30M x 0.32mm x 0.25µm

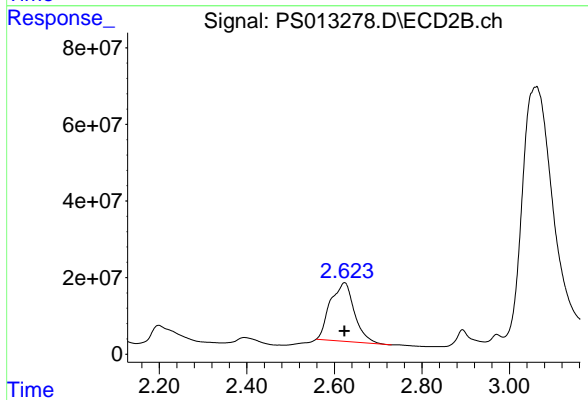




#1 Dalapon

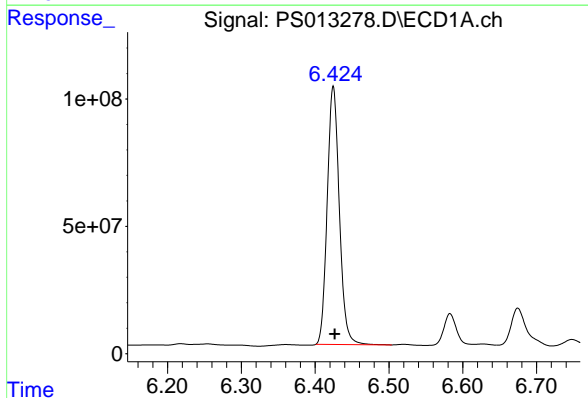
R.T.: 3.032 min
 Delta R.T.: 0.000 min
 Response: 645884428
 Conc: 610.47 ng/ml

Instrument :
 ECD_S
 ClientSampleId :
 PB133137BSD



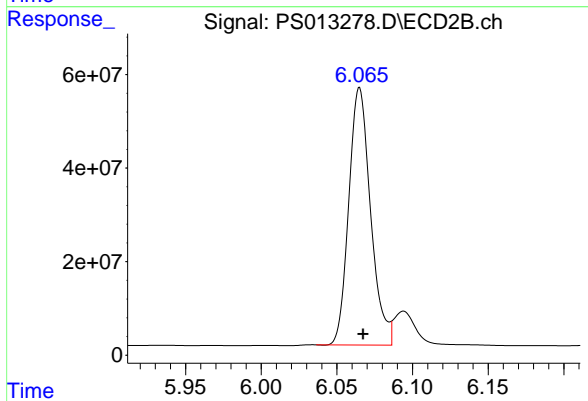
#1 Dalapon

R.T.: 2.623 min
 Delta R.T.: 0.000 min
 Response: 583170364
 Conc: 1100.37 ng/ml



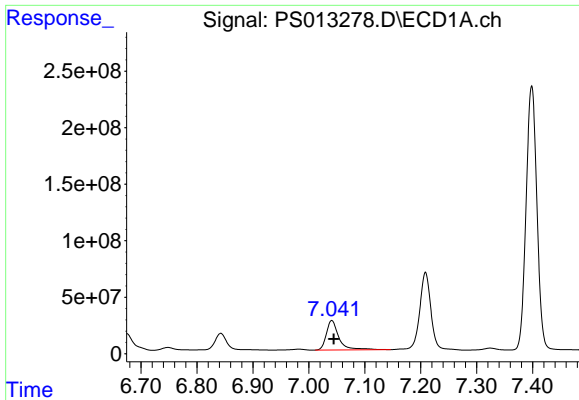
#2 3,5-DICHLOROBENZOIC ACID

R.T.: 6.425 min
 Delta R.T.: -0.002 min
 Response: 1156793799
 Conc: 939.28 ng/ml



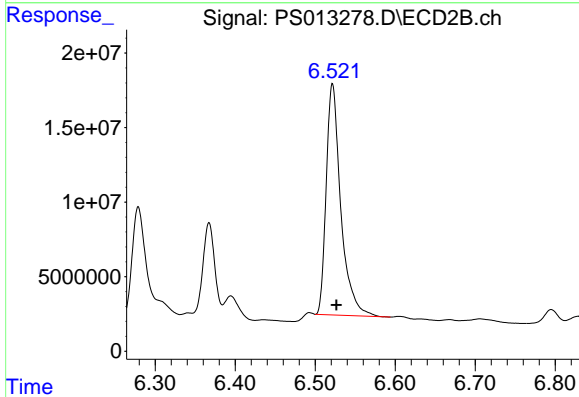
#2 3,5-DICHLOROBENZOIC ACID

R.T.: 6.065 min
 Delta R.T.: -0.002 min
 Response: 551501349
 Conc: 896.50 ng/ml

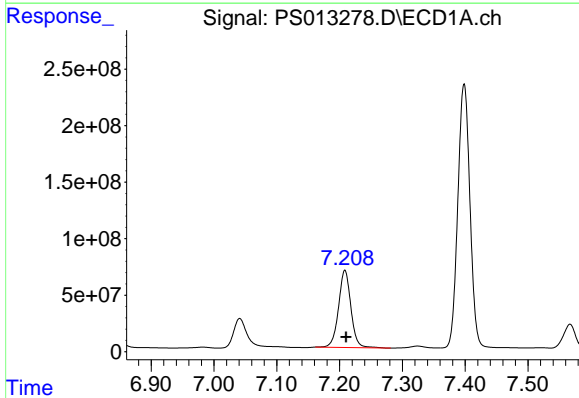


#3 4-Nitrophenol
 R.T.: 7.041 min
 Delta R.T.: -0.004 min
 Response: 405256030
 Conc: 950.22 ng/ml

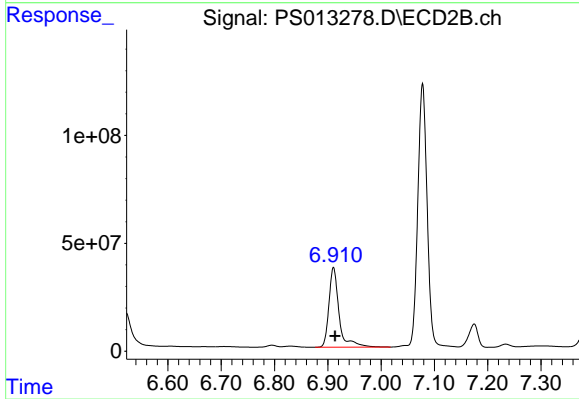
Instrument :
 ECD_S
 ClientSampleId :
 PB133137BSD



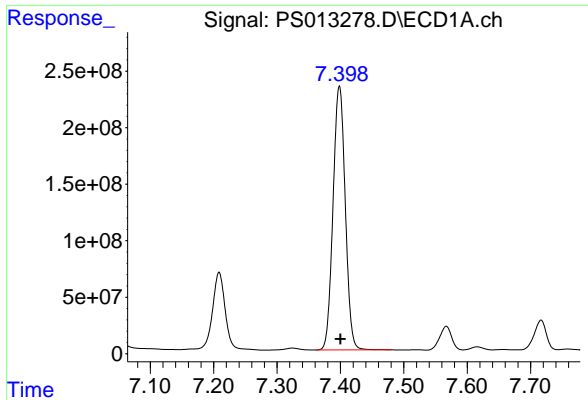
#3 4-Nitrophenol
 R.T.: 6.522 min
 Delta R.T.: -0.005 min
 Response: 196499680
 Conc: 825.11 ng/ml



#4 2,4-DCAA
 R.T.: 7.209 min
 Delta R.T.: -0.002 min
 Response: 933494538
 Conc: 1044.26 ng/ml



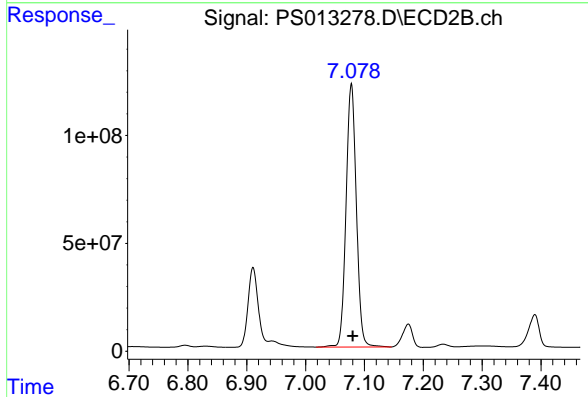
#4 2,4-DCAA
 R.T.: 6.911 min
 Delta R.T.: -0.003 min
 Response: 489115886
 Conc: 1257.08 ng/ml



#5 DICAMBA

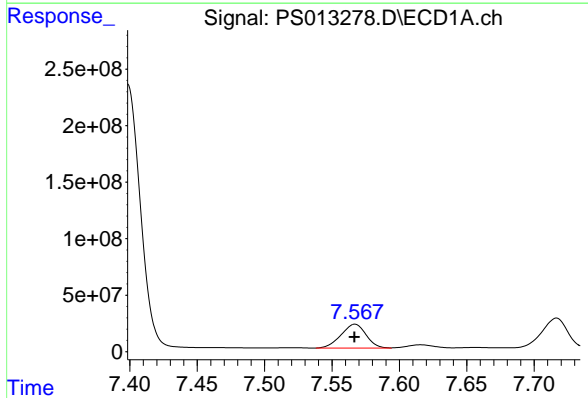
R.T.: 7.398 min
 Delta R.T.: -0.001 min
 Response: 3130506379
 Conc: 876.59 ng/ml

Instrument :
 ECD_S
 ClientSampleId :
 PB133137BSD



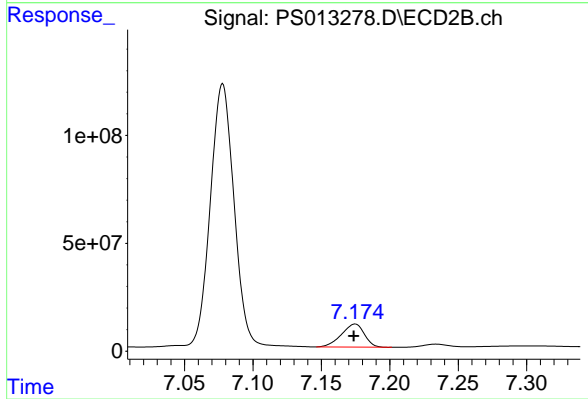
#5 DICAMBA

R.T.: 7.078 min
 Delta R.T.: -0.002 min
 Response: 1482609464
 Conc: 893.13 ng/ml



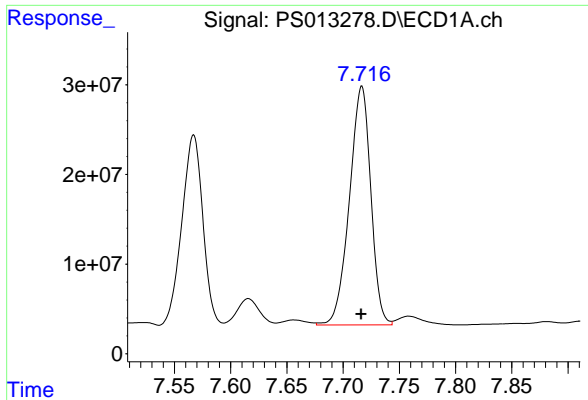
#6 MCPP

R.T.: 7.567 min
 Delta R.T.: 0.000 min
 Response: 274773924
 Conc: 103.22 ug/ml



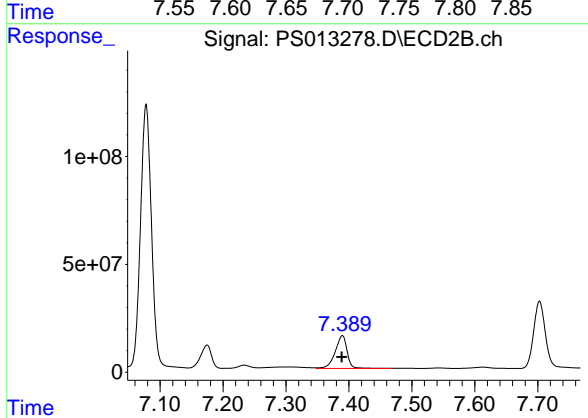
#6 MCPP

R.T.: 7.174 min
 Delta R.T.: 0.000 min
 Response: 124592575
 Conc: 94.13 ug/ml

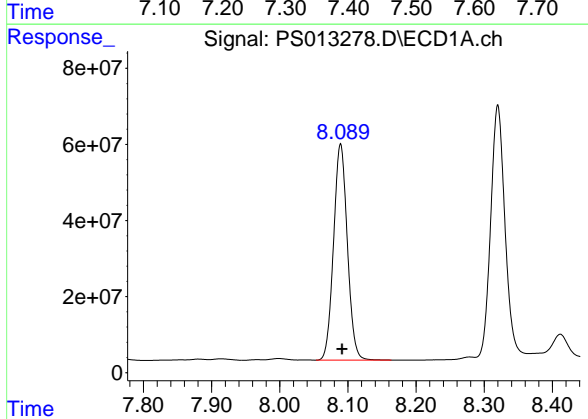


#7 MCPA
 R.T.: 7.717 min
 Delta R.T.: 0.000 min
 Response: 352495784
 Conc: 92.31 ug/ml

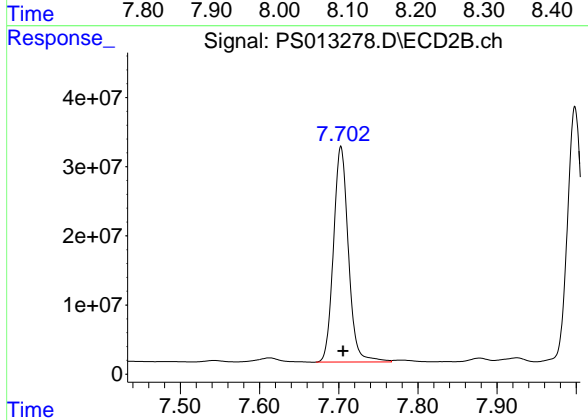
Instrument :
 ECD_S
 ClientSampleId :
 PB133137BSD



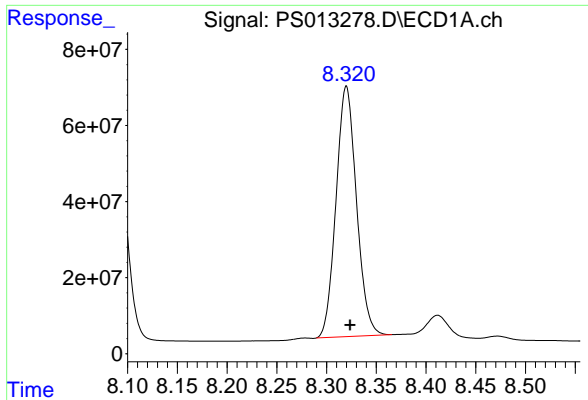
#7 MCPA
 R.T.: 7.389 min
 Delta R.T.: 0.000 min
 Response: 199766835
 Conc: 93.89 ug/ml



#8 DICHLORPROP
 R.T.: 8.089 min
 Delta R.T.: -0.002 min
 Response: 798995316
 Conc: 892.24 ng/ml



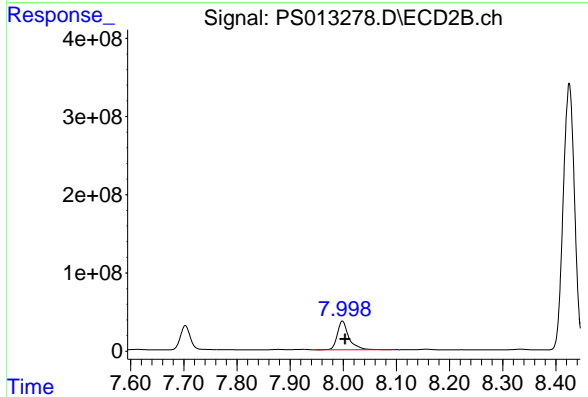
#8 DICHLORPROP
 R.T.: 7.703 min
 Delta R.T.: -0.003 min
 Response: 407792957
 Conc: 912.37 ng/ml



#9 2,4-D

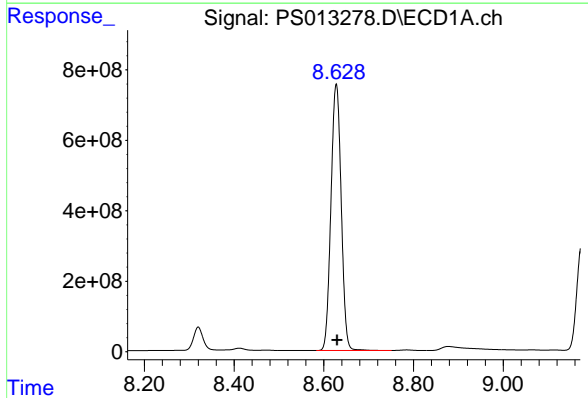
R.T.: 8.320 min
 Delta R.T.: -0.004 min
 Response: 940817380
 Conc: 995.84 ng/ml

Instrument :
 ECD_S
 ClientSampleId :
 PB133137BSD



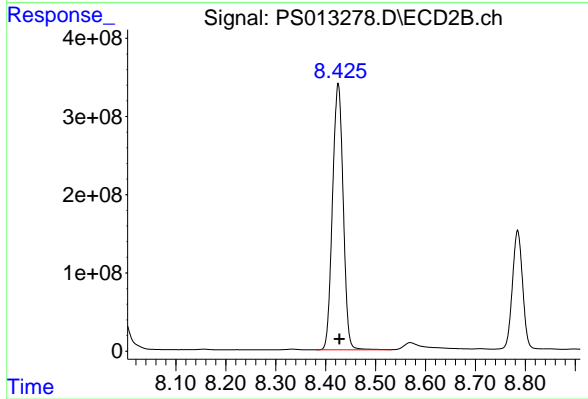
#9 2,4-D

R.T.: 7.998 min
 Delta R.T.: -0.005 min
 Response: 555272447
 Conc: 1046.29 ng/ml



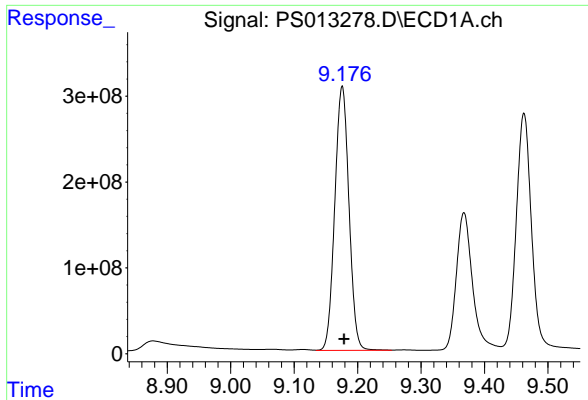
#10 Pentachlorophenol

R.T.: 8.628 min
 Delta R.T.: -0.001 min
 Response: 11976517776
 Conc: 930.56 ng/ml



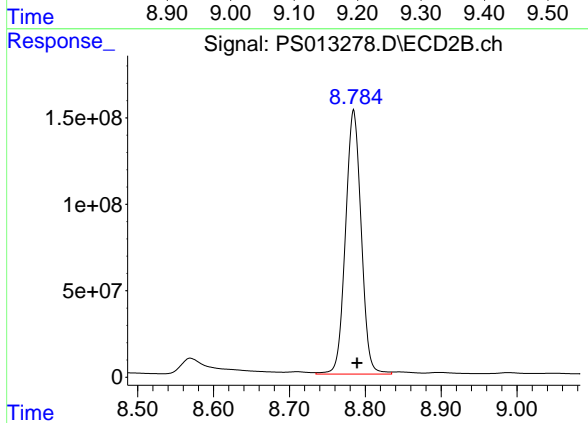
#10 Pentachlorophenol

R.T.: 8.425 min
 Delta R.T.: -0.002 min
 Response: 5062827988
 Conc: 916.14 ng/ml

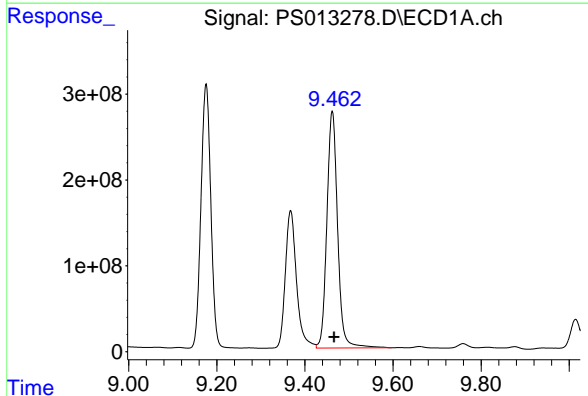


#11 2,4,5-TP (SILVEX)
 R.T.: 9.176 min
 Delta R.T.: -0.003 min
 Response: 4776348403
 Conc: 930.06 ng/ml

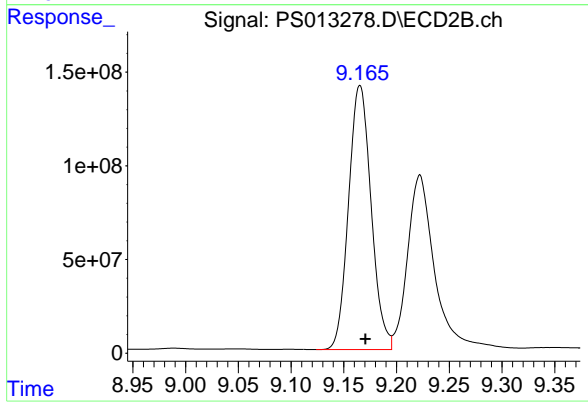
Instrument :
 ECD_S
 ClientSampleId :
 PB133137BSD



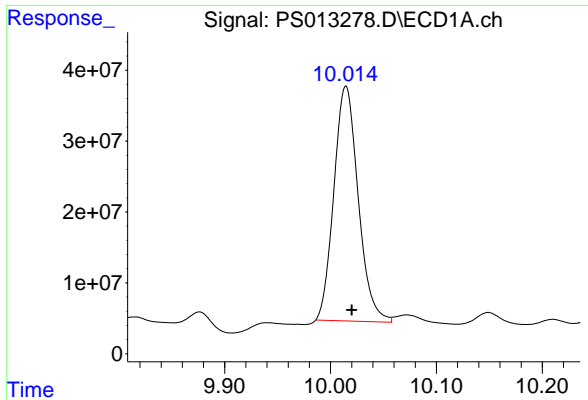
#11 2,4,5-TP (SILVEX)
 R.T.: 8.785 min
 Delta R.T.: -0.005 min
 Response: 2192545575
 Conc: 946.09 ng/ml



#12 2,4,5-T
 R.T.: 9.462 min
 Delta R.T.: -0.004 min
 Response: 4664914253
 Conc: 881.48 ng/ml



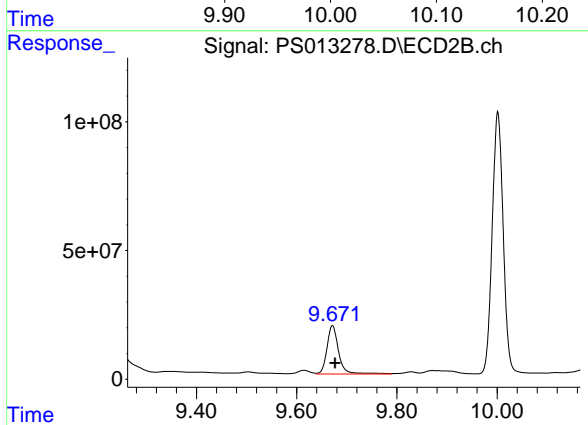
#12 2,4,5-T
 R.T.: 9.165 min
 Delta R.T.: -0.005 min
 Response: 2099673789
 Conc: 947.94 ng/ml



#13 2,4-DB

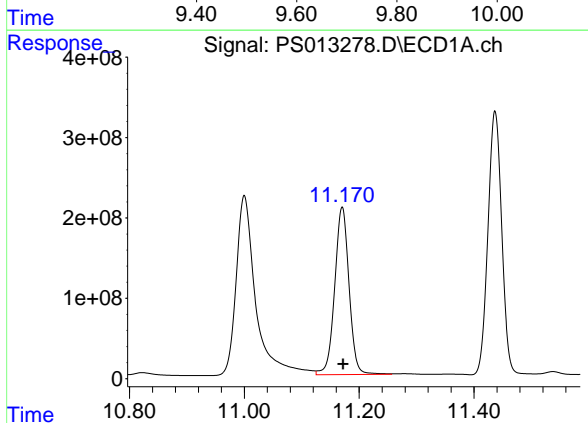
R.T.: 10.015 min
Delta R.T.: -0.006 min
Response: 528783980
Conc: 627.68 ng/ml

Instrument :
ECD_S
ClientSampleId :
PB133137BSD



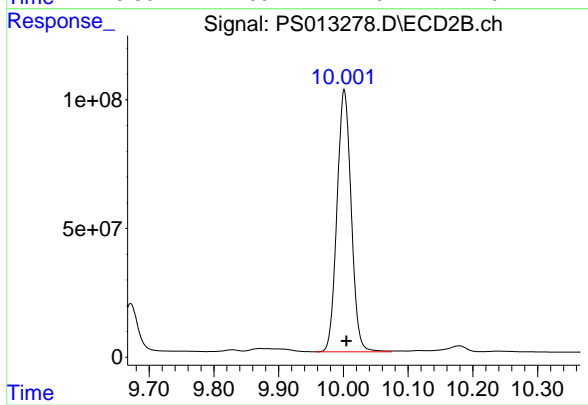
#13 2,4-DB

R.T.: 9.671 min
Delta R.T.: -0.006 min
Response: 304194499
Conc: 937.30 ng/ml



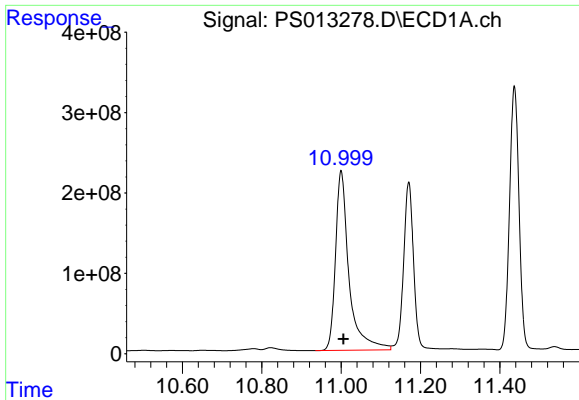
#14 DINOSEB

R.T.: 11.170 min
Delta R.T.: -0.002 min
Response: 3611703675
Conc: 875.88 ng/ml



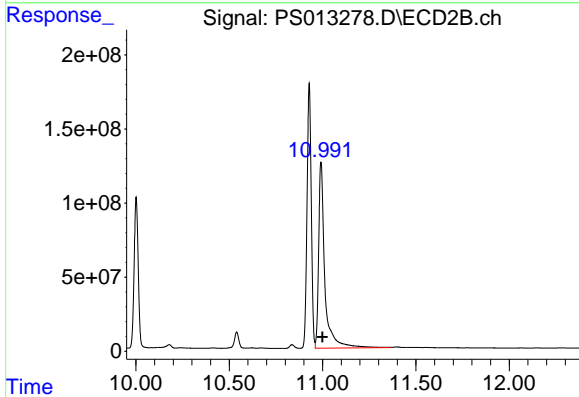
#14 DINOSEB

R.T.: 10.001 min
Delta R.T.: -0.004 min
Response: 1553524732
Conc: 921.48 ng/ml

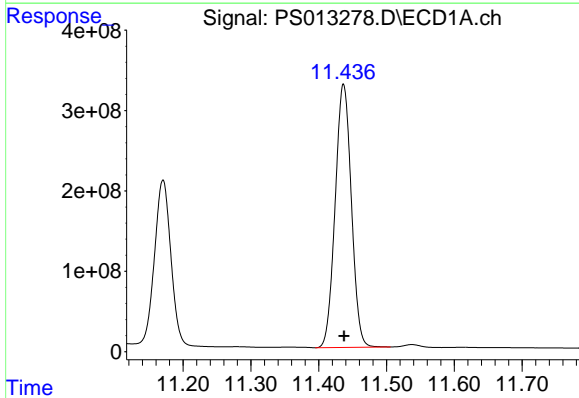


#15 Picloram
 R.T.: 11.000 min
 Delta R.T.: -0.006 min
 Response: 5295825086
 Conc: 805.36 ng/ml

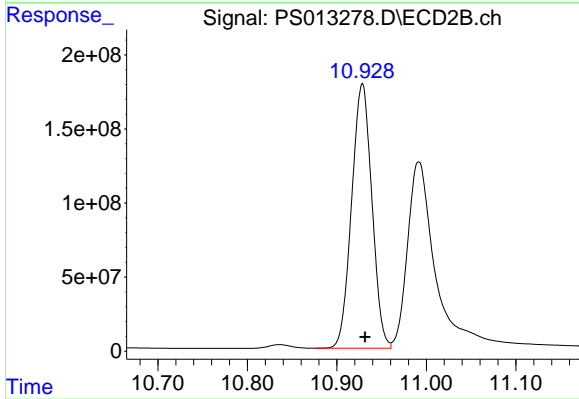
Instrument :
 ECD_S
ClientSampleId :
 PB133137BSD



#15 Picloram
 R.T.: 10.992 min
 Delta R.T.: -0.008 min
 Response: 2913226647
 Conc: 807.11 ng/ml



#16 DCPA
 R.T.: 11.437 min
 Delta R.T.: -0.001 min
 Response: 5426580724
 Conc: 835.61 ng/ml



#16 DCPA
 R.T.: 10.928 min
 Delta R.T.: -0.003 min
 Response: 2806518062
 Conc: 934.80 ng/ml