

Data Path : Z:\pestpcbsrv\HPCHEM1\ECD\_S\Data\PS112320\  
 Data File : PS013282.D  
 Signal(s) : Signal #1: ECD1A.ch Signal #2: ECD2B.ch  
 Acq On : 23 Nov 2020 14:42  
 Operator : DD\AJ  
 Sample : AR1660CCC500  
 Misc :  
 ALS Vial : 3 Sample Multiplier: 1

Instrument :  
 ECD\_S  
 ClientSampleId :  
 HSTDCCC750

Integration File signal 1: autoint1.e  
 Integration File signal 2: autoint2.e  
 Quant Time: Nov 23 16:02:50 2020  
 Quant Method : Z:\pestpcbsrv\HPCHEM1\ECD\_S\Method\PS110220.M  
 Quant Title : 8080.M  
 QLast Update : Tue Nov 03 03:59:48 2020  
 Response via : Initial Calibration  
 Integrator: ChemStation

Volume Inj. : 2 µl  
 Signal #1 Phase : Rtx-CLPesticides Signal #2 Phase: Rtx-CLPesticides2  
 Signal #1 Info : 30M x 0.32mm x0.5 Signal #2 Info : 30M x 0.32mm x 0.25µm

	Compound	RT#1	RT#2	Resp#1	Resp#2	ng/ml	ng/ml
-----							
System Monitoring Compounds							
4) S	2,4-DCAA	7.209	6.911	703.6E6	312.4E6	787.037	802.941
Target Compounds							
1) T	Dalapon	3.033	2.625	709.0E6	359.5E6	670.155	678.281
2) T	3,5-DICHL...	6.425	6.066	894.5E6	455.3E6	726.329	740.080
3) T	4-Nitroph...	7.043	6.524	308.3E6	177.3E6	722.864	744.370
5) T	DICAMBA	7.398	7.078	2648.7E6	1255.4E6	741.673	756.268
6) T	MCP P	7.566	7.173	200.9E6	99303636	75.474	75.026
7) T	MCPA	7.714	7.388	278.2E6	152.5E6	72.867	71.675
8) T	DICHLORPROP	8.089	7.703	657.9E6	333.7E6	734.669	746.592
9) T	2,4-D	8.321	8.000	712.9E6	402.4E6	754.558	758.330
10) T	Pentachlo...	8.628	8.425	9559.9E6	4181.6E6	742.792	756.686
11) T	2,4,5-TP ...	9.176	8.786	3818.4E6	1772.1E6	743.521	764.685
12) T	2,4,5-T	9.464	9.167	3884.5E6	1714.3E6	734.018	773.968
13) T	2,4-DB	10.018	9.674	609.7E6	254.4E6	723.747	783.986
14) T	DINOSEB	11.170	10.002	2976.7E6	1282.9E6	721.892	760.990
15) T	Picloram	11.004	10.996	4562.4E6	2495.8E6	693.833	691.466
16) T	DCPA	11.435	10.929	4826.4E6	2323.3E6	743.200	773.865

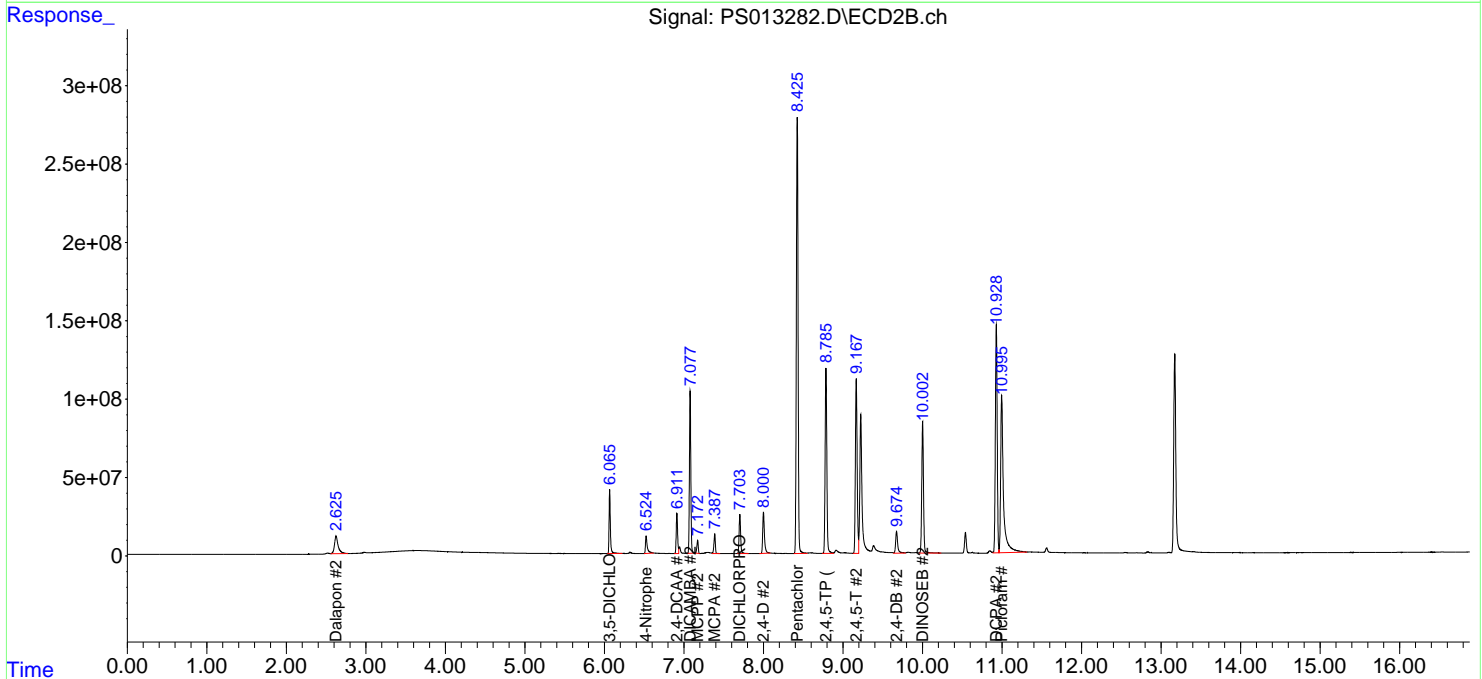
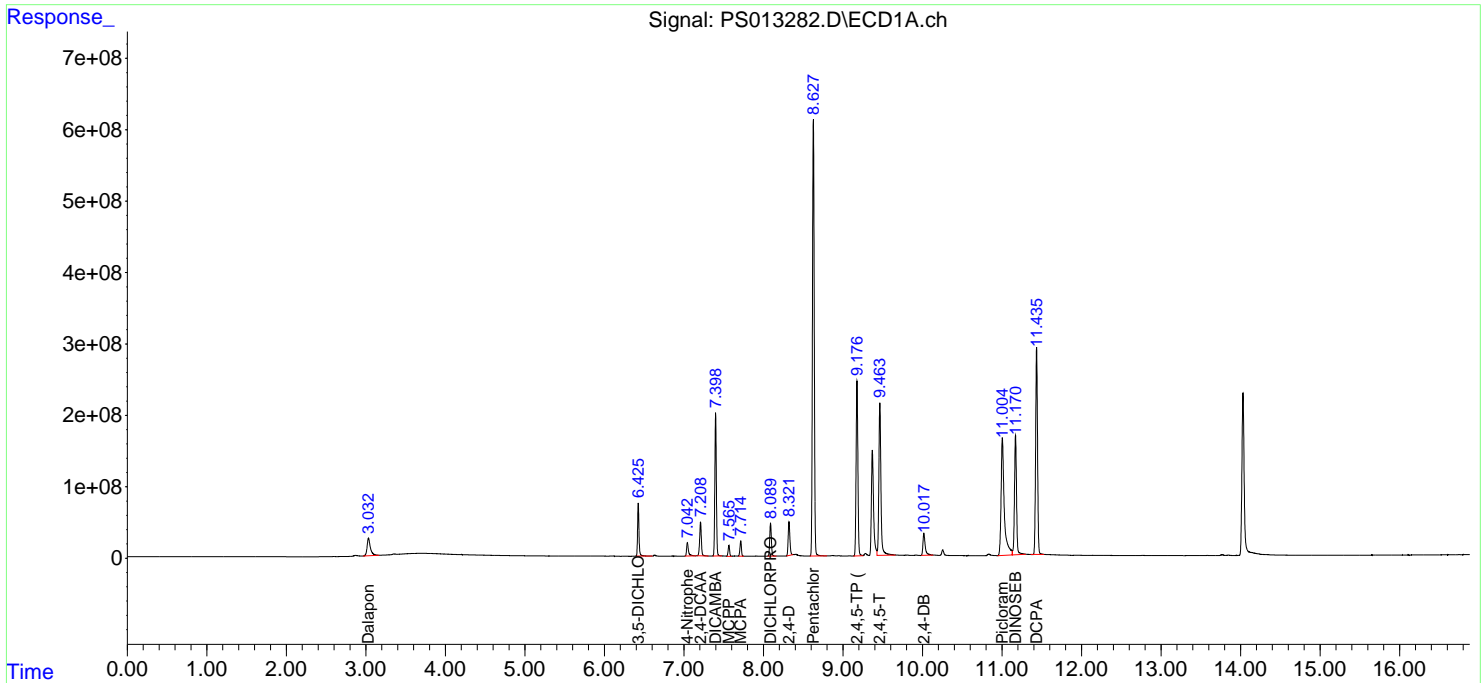
(f)=RT Delta > 1/2 Window (#)=Amounts differ by > 25% (m)=manual int.

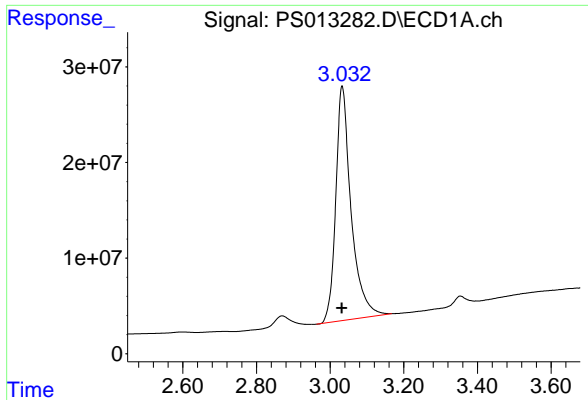
Data Path : Z:\pestpcbsrv\HPCHEM1\ECD\_S\Data\PS112320\  
 Data File : PS013282.D  
 Signal(s) : Signal #1: ECD1A.ch Signal #2: ECD2B.ch  
 Acq On : 23 Nov 2020 14:42  
 Operator : DD\AJ  
 Sample : AR1660CCC500  
 Misc :  
 ALS Vial : 3 Sample Multiplier: 1

Instrument :  
 ECD\_S  
 ClientSampleId :  
 HSTDCCC750

Integration File signal 1: autoint1.e  
 Integration File signal 2: autoint2.e  
 Quant Time: Nov 23 16:02:50 2020  
 Quant Method : Z:\pestpcbsrv\HPCHEM1\ECD\_S\Method\PS110220.M  
 Quant Title : 8080.M  
 QLast Update : Tue Nov 03 03:59:48 2020  
 Response via : Initial Calibration  
 Integrator: ChemStation

Volume Inj. : 2 µl  
 Signal #1 Phase : Rtx-CLPesticides Signal #2 Phase: Rtx-CLPesticides2  
 Signal #1 Info : 30M x 0.32mm x0.5 Signal #2 Info : 30M x 0.32mm x 0.25µm

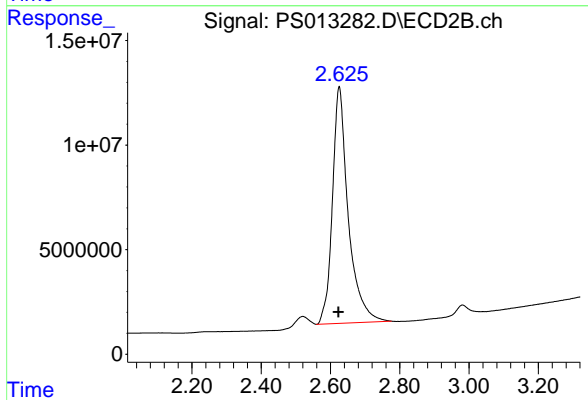




#1 Dalapon

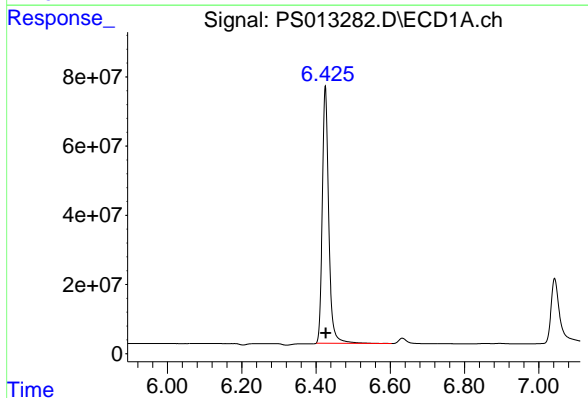
R.T.: 3.033 min  
 Delta R.T.: 0.000 min  
 Response: 709030755  
 Conc: 670.15 ng/ml

Instrument :  
 ECD\_S  
 ClientSampleId :  
 HSTDCCC750



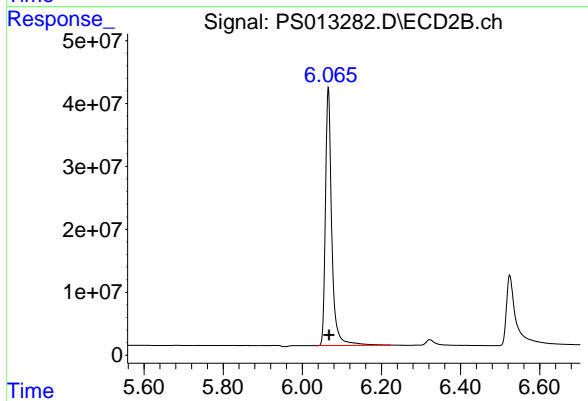
#1 Dalapon

R.T.: 2.625 min  
 Delta R.T.: 0.002 min  
 Response: 359471988  
 Conc: 678.28 ng/ml



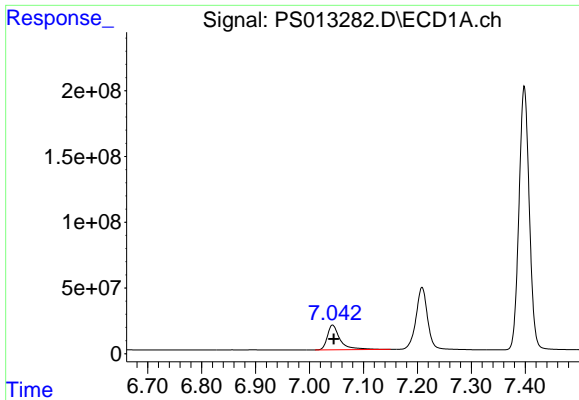
#2 3,5-DICHLOROBENZOIC ACID

R.T.: 6.425 min  
 Delta R.T.: -0.001 min  
 Response: 894529480  
 Conc: 726.33 ng/ml



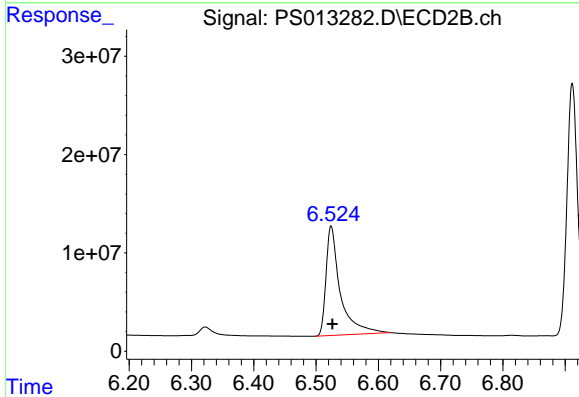
#2 3,5-DICHLOROBENZOIC ACID

R.T.: 6.066 min  
 Delta R.T.: -0.002 min  
 Response: 455276800  
 Conc: 740.08 ng/ml

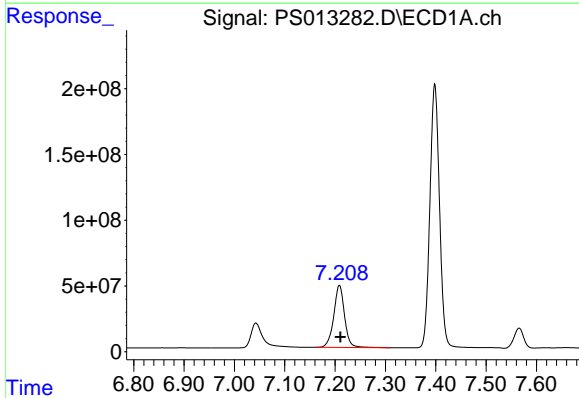


#3 4-Nitrophenol  
R.T.: 7.043 min  
Delta R.T.: -0.002 min  
Response: 308291733  
Conc: 722.86 ng/ml

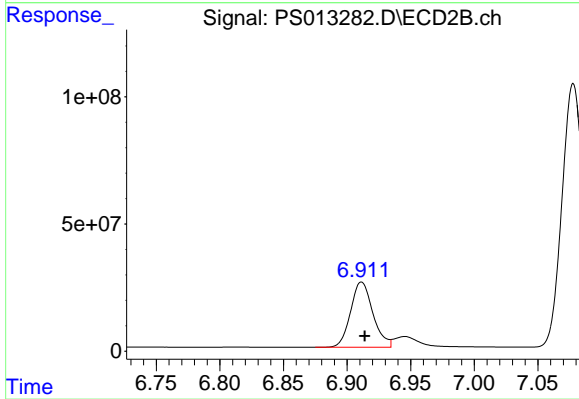
Instrument :  
ECD\_S  
ClientSampleId :  
HSTDCCC750



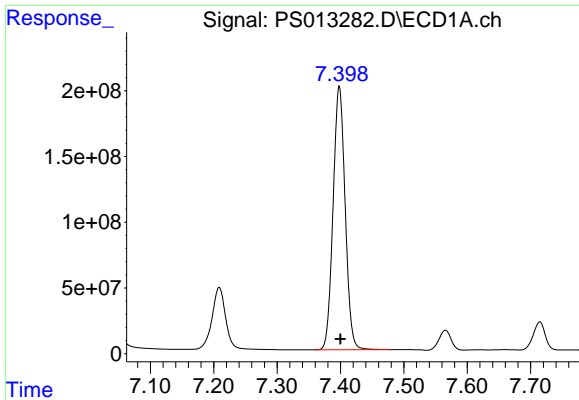
#3 4-Nitrophenol  
R.T.: 6.524 min  
Delta R.T.: -0.002 min  
Response: 177270710  
Conc: 744.37 ng/ml



#4 2,4-DCAA  
R.T.: 7.209 min  
Delta R.T.: -0.002 min  
Response: 703555117  
Conc: 787.04 ng/ml



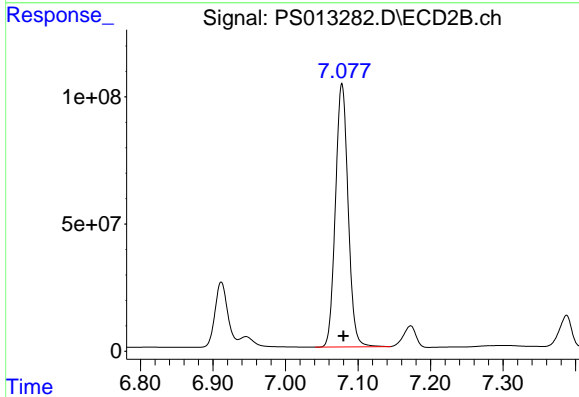
#4 2,4-DCAA  
R.T.: 6.911 min  
Delta R.T.: -0.002 min  
Response: 312415770  
Conc: 802.94 ng/ml



#5 DICAMBA

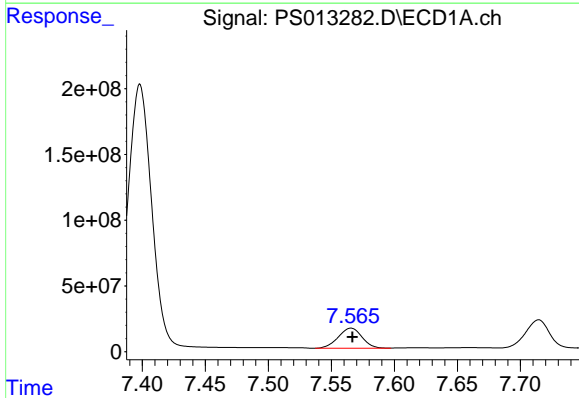
R.T.: 7.398 min  
 Delta R.T.: -0.002 min  
 Response: 2648691284  
 Conc: 741.67 ng/ml

Instrument :  
 ECD\_S  
 ClientSampleId :  
 HSTDCCC750



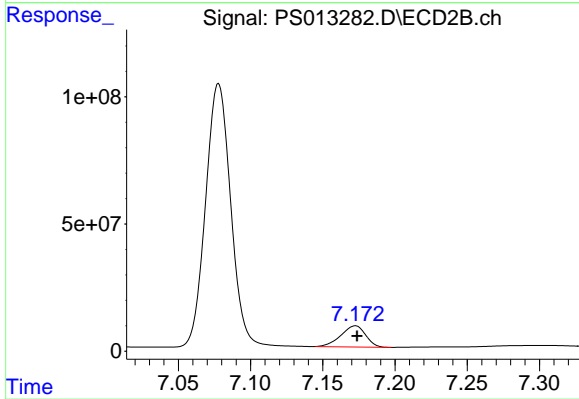
#5 DICAMBA

R.T.: 7.078 min  
 Delta R.T.: -0.002 min  
 Response: 1255422532  
 Conc: 756.27 ng/ml



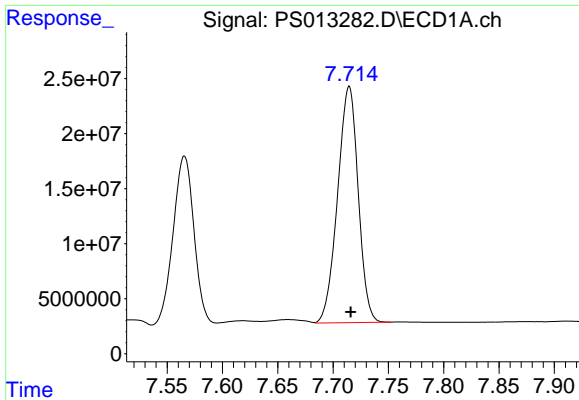
#6 MCP

R.T.: 7.566 min  
 Delta R.T.: 0.000 min  
 Response: 200920071  
 Conc: 75.47 ug/ml



#6 MCP

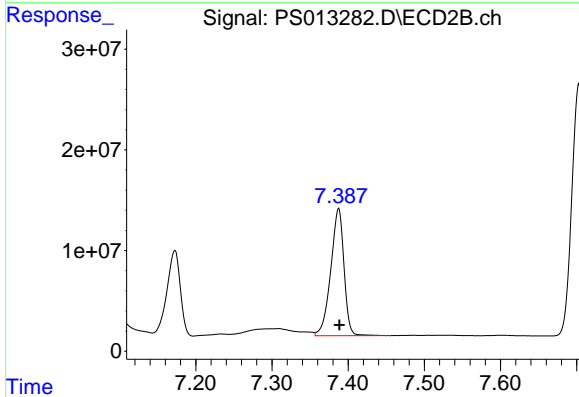
R.T.: 7.173 min  
 Delta R.T.: -0.001 min  
 Response: 99303636  
 Conc: 75.03 ug/ml



#7 MCPA

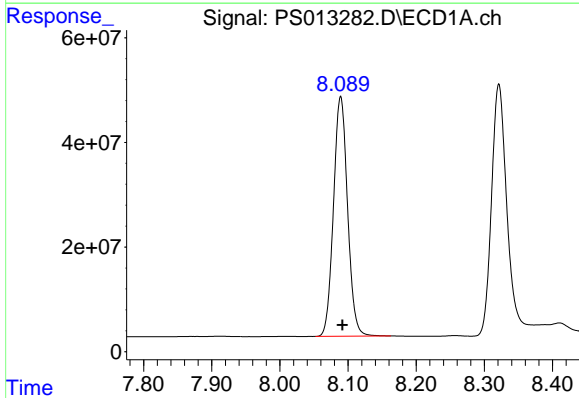
R.T.: 7.714 min  
 Delta R.T.: -0.002 min  
 Response: 278239510  
 Conc: 72.87 ug/ml

Instrument :  
 ECD\_S  
 ClientSampleId :  
 HSTDCCC750



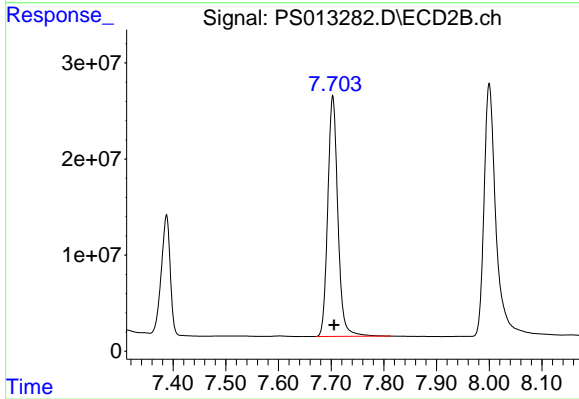
#7 MCPA

R.T.: 7.388 min  
 Delta R.T.: -0.001 min  
 Response: 152500432  
 Conc: 71.68 ug/ml



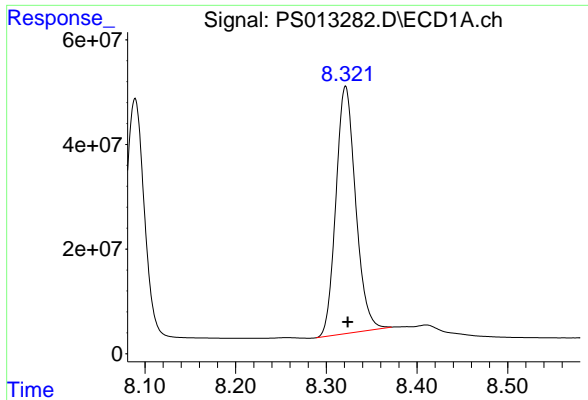
#8 DICHLORPROP

R.T.: 8.089 min  
 Delta R.T.: -0.002 min  
 Response: 657892962  
 Conc: 734.67 ng/ml



#8 DICHLORPROP

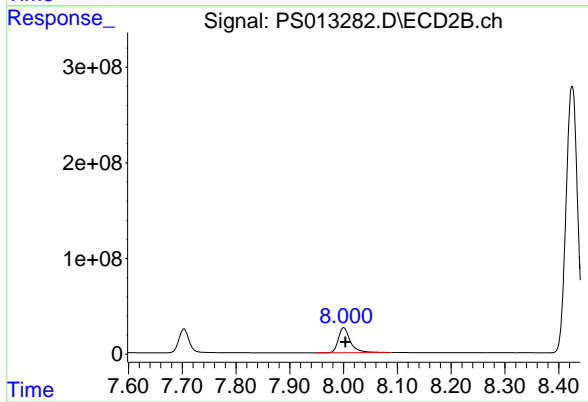
R.T.: 7.703 min  
 Delta R.T.: -0.003 min  
 Response: 333696175  
 Conc: 746.59 ng/ml



#9 2,4-D

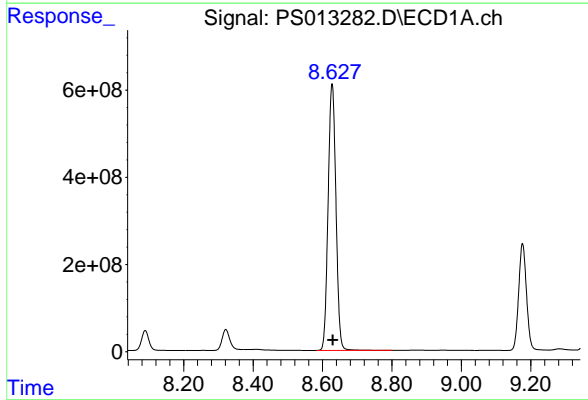
R.T.: 8.321 min  
Delta R.T.: -0.002 min  
Response: 712863325  
Conc: 754.56 ng/ml

Instrument :  
ECD\_S  
ClientSampleId :  
HSTDCCC750



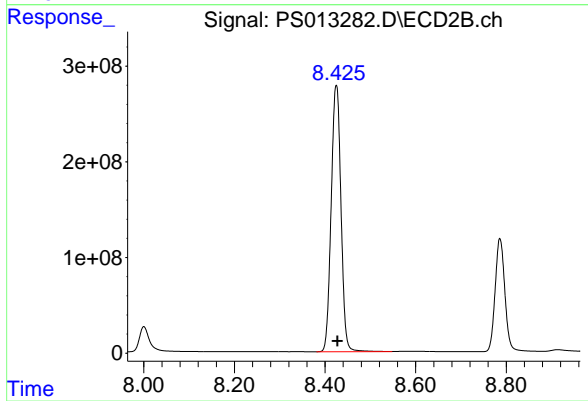
#9 2,4-D

R.T.: 8.000 min  
Delta R.T.: -0.004 min  
Response: 402449849  
Conc: 758.33 ng/ml



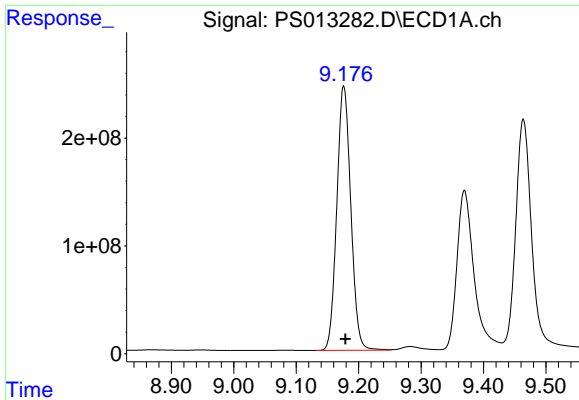
#10 Pentachlorophenol

R.T.: 8.628 min  
Delta R.T.: -0.002 min  
Response: 9559912844  
Conc: 742.79 ng/ml



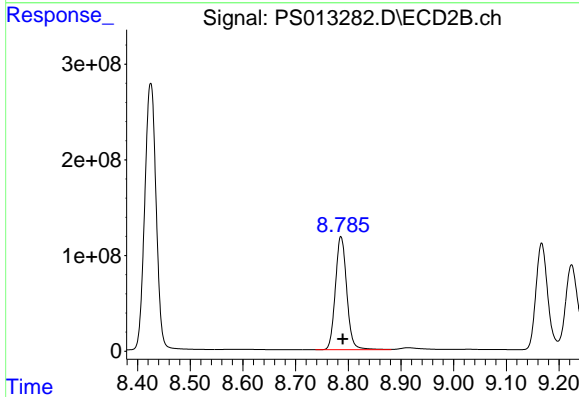
#10 Pentachlorophenol

R.T.: 8.425 min  
Delta R.T.: -0.003 min  
Response: 4181633981  
Conc: 756.69 ng/ml

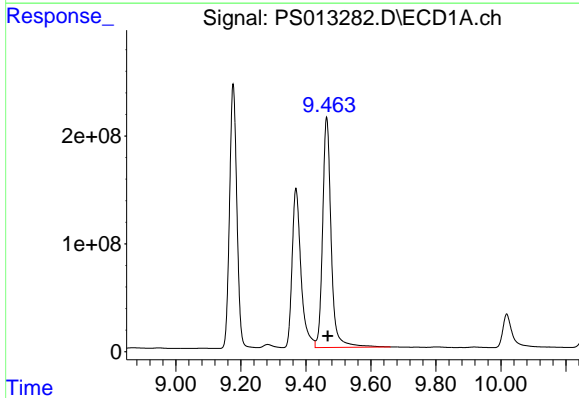


#11 2,4,5-TP (SILVEX)  
 R.T.: 9.176 min  
 Delta R.T.: -0.002 min  
 Response: 3818387763  
 Conc: 743.52 ng/ml

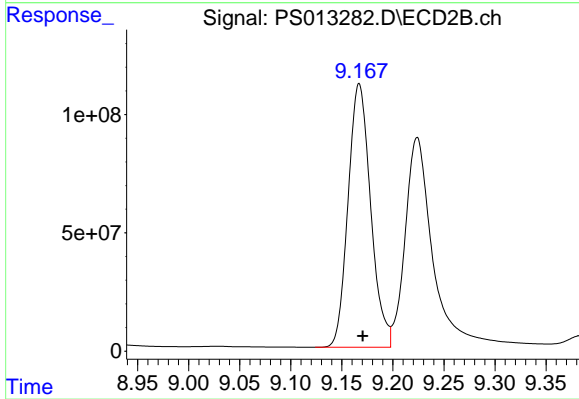
**Instrument :**  
 ECD\_S  
**ClientSampleId :**  
 HSTDCCC750



#11 2,4,5-TP (SILVEX)  
 R.T.: 8.786 min  
 Delta R.T.: -0.003 min  
 Response: 1772136494  
 Conc: 764.68 ng/ml

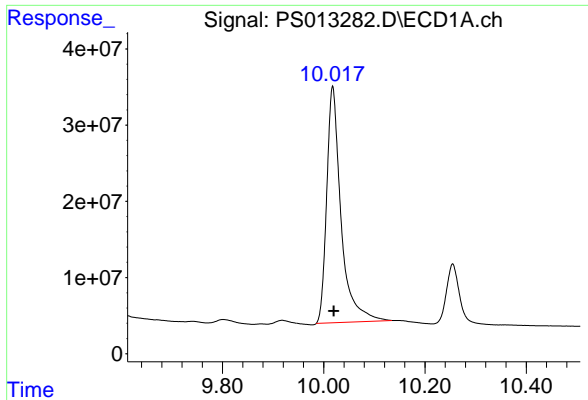


#12 2,4,5-T  
 R.T.: 9.464 min  
 Delta R.T.: -0.003 min  
 Response: 3884508926  
 Conc: 734.02 ng/ml



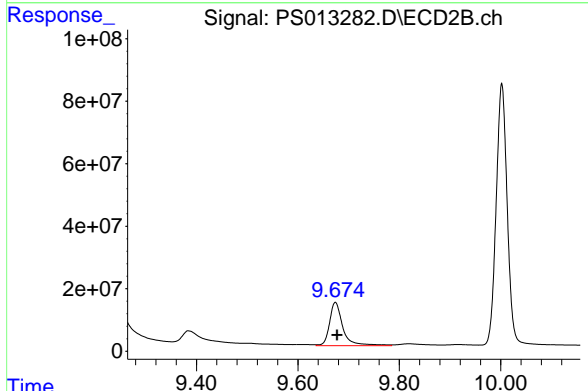
#12 2,4,5-T  
 R.T.: 9.167 min  
 Delta R.T.: -0.003 min  
 Response: 1714332884  
 Conc: 773.97 ng/ml



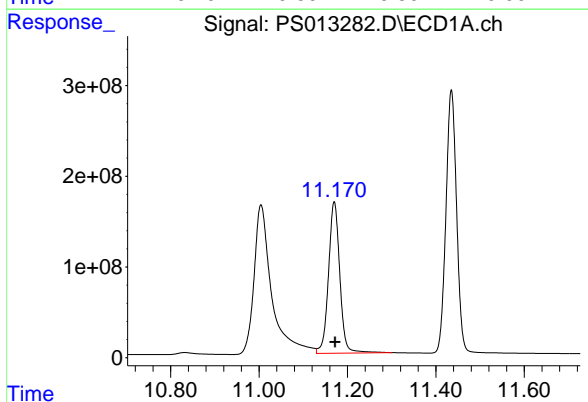


#13 2,4-DB  
 R.T.: 10.018 min  
 Delta R.T.: -0.002 min  
 Response: 609718663  
 Conc: 723.75 ng/ml

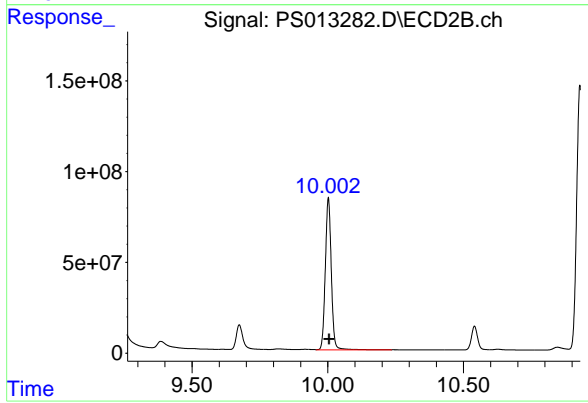
**Instrument :**  
 ECD\_S  
**ClientSampleId :**  
 HSTDCCC750



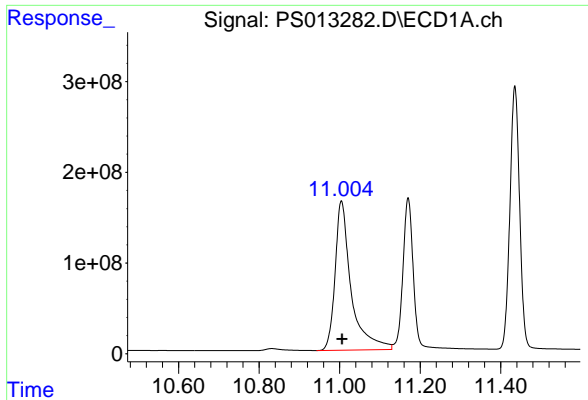
#13 2,4-DB  
 R.T.: 9.674 min  
 Delta R.T.: -0.003 min  
 Response: 254437785  
 Conc: 783.99 ng/ml



#14 DINOSEB  
 R.T.: 11.170 min  
 Delta R.T.: -0.002 min  
 Response: 2976736439  
 Conc: 721.89 ng/ml

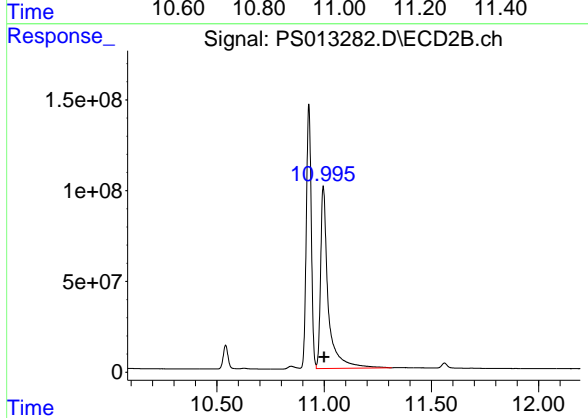


#14 DINOSEB  
 R.T.: 10.002 min  
 Delta R.T.: -0.003 min  
 Response: 1282948799  
 Conc: 760.99 ng/ml

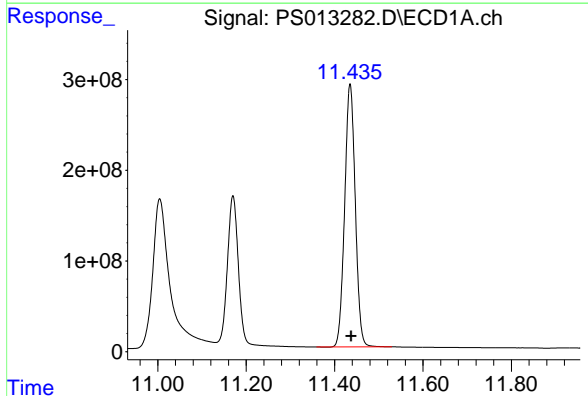


#15 Picloram  
R.T.: 11.004 min  
Delta R.T.: -0.002 min  
Response: 4562449927  
Conc: 693.83 ng/ml

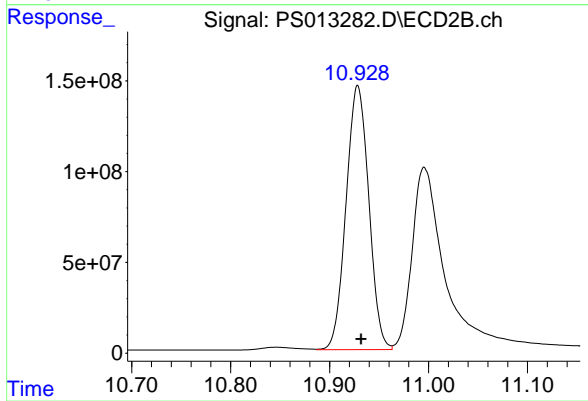
Instrument :  
ECD\_S  
ClientSampleId :  
HSTDCCC750



#15 Picloram  
R.T.: 10.996 min  
Delta R.T.: -0.003 min  
Response: 2495825697  
Conc: 691.47 ng/ml



#16 DCPA  
R.T.: 11.435 min  
Delta R.T.: -0.002 min  
Response: 4826433053  
Conc: 743.20 ng/ml



#16 DCPA  
R.T.: 10.929 min  
Delta R.T.: -0.003 min  
Response: 2323342292  
Conc: 773.87 ng/ml