

Data Path : Z:\pestpcbsrv\HPCHEM1\ECD_S\Data\PS112519\
 Data File : PS007818.D
 Signal(s) : Signal #1: ECD1A.ch Signal #2: ECD2B.ch
 Acq On : 25 Nov 2019 09:10
 Operator : SM\AJ
 Sample : I.BLK
 Misc :
 ALS Vial : 2 Sample Multiplier: 1

Instrument :
 ECD_S
 ClientSampleId :

Integration File signal 1: autoint1.e
 Integration File signal 2: autoint2.e
 Quant Time: Nov 25 10:28:48 2019
 Quant Method : Z:\pestpcbsrv\HPCHEM1\ECD_S\Method\PS110619.M
 Quant Title : 8080.M
 QLast Update : Wed Nov 06 02:45:11 2019
 Response via : Initial Calibration
 Integrator: ChemStation

Volume Inj. : 2 µl
 Signal #1 Phase : Rtx-CLPesticides Signal #2 Phase: Rtx-CLPesticides2
 Signal #1 Info : 30M x 0.32mm x0.5 Signal #2 Info : 30M x 0.32mm x 0.25µm

Compound	RT#1	RT#2	Resp#1	Resp#2	ng/ml	ng/ml

System Monitoring Compounds						
4) S 2,4-DCAA	5.448	5.170	637.6E6	340.5E6	462.962	484.693
Target Compounds						
7) T MCPA	0.000	5.491	0	32493031	N.D.	10.810
15) T Picloram	0.000	8.929	0	90664177	N.D.	15.475

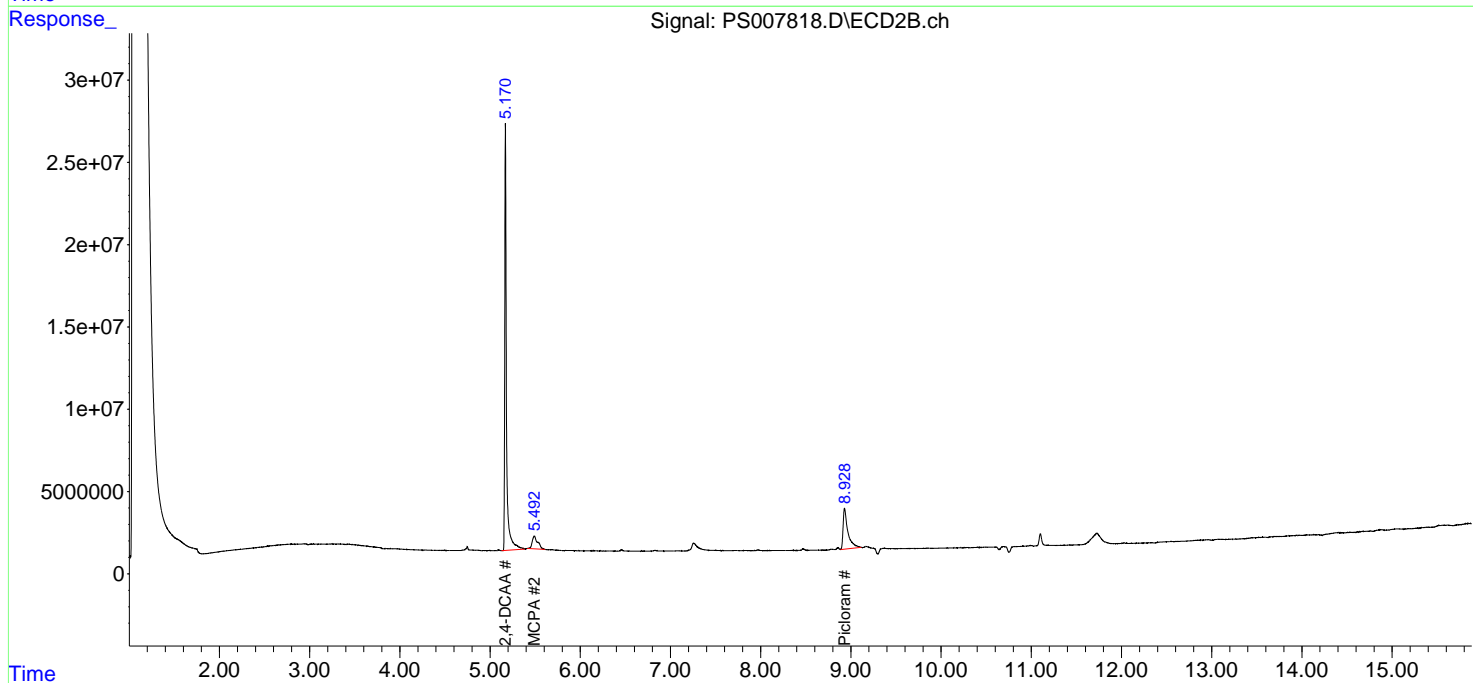
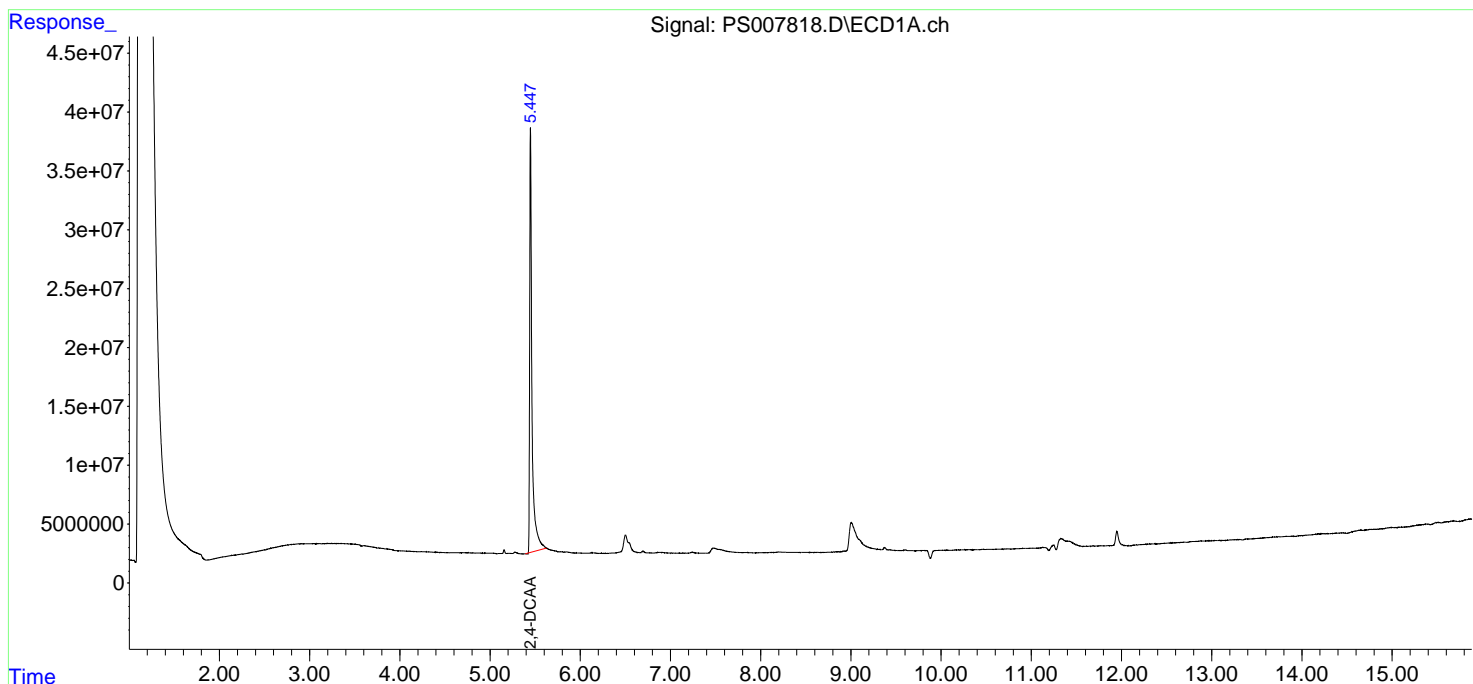
(f)=RT Delta > 1/2 Window (#)=Amounts differ by > 25% (m)=manual int.

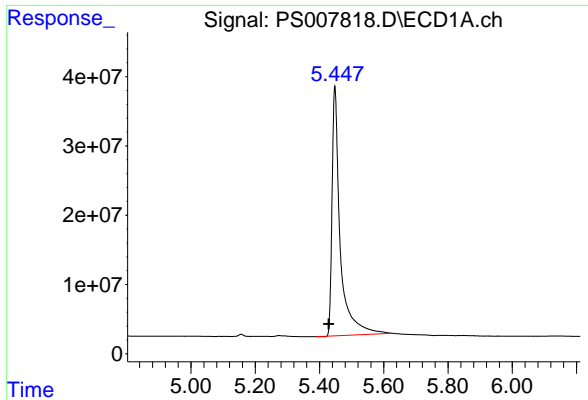
Data Path : Z:\pestpcbsrv\HPCHEM1\ECD_S\Data\PS112519\
 Data File : PS007818.D
 Signal(s) : Signal #1: ECD1A.ch Signal #2: ECD2B.ch
 Acq On : 25 Nov 2019 09:10
 Operator : SM\AJ
 Sample : I.BLK
 Misc :
 ALS Vial : 2 Sample Multiplier: 1

Instrument :
 ECD_S
 ClientSampleId :

Integration File signal 1: autoint1.e
 Integration File signal 2: autoint2.e
 Quant Time: Nov 25 10:28:48 2019
 Quant Method : Z:\pestpcbsrv\HPCHEM1\ECD_S\Method\PS110619.M
 Quant Title : 8080.M
 QLast Update : Wed Nov 06 02:45:11 2019
 Response via : Initial Calibration
 Integrator: ChemStation

Volume Inj. : 2 µl
 Signal #1 Phase : Rtx-CLPesticides Signal #2 Phase: Rtx-CLPesticides2
 Signal #1 Info : 30M x 0.32mm x0.5 Signal #2 Info : 30M x 0.32mm x 0.25µm

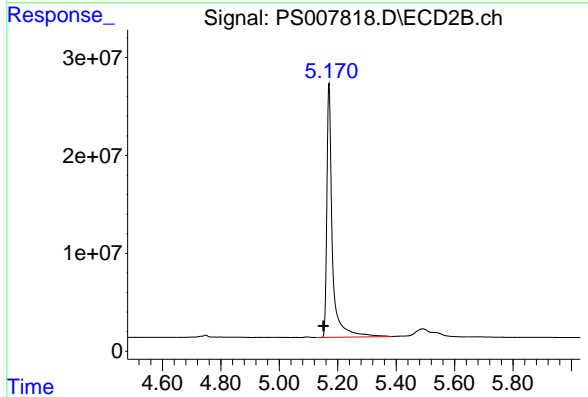




#4 2,4-DCAA

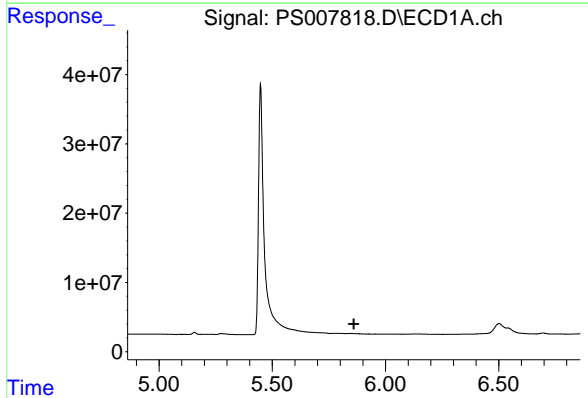
R.T.: 5.448 min
 Delta R.T.: 0.020 min
 Response: 637584212
 Conc: 462.96 ng/ml

Instrument :
 ECD_S
 ClientSampled :



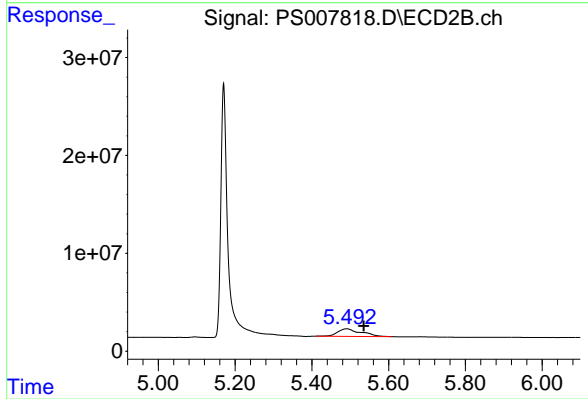
#4 2,4-DCAA

R.T.: 5.170 min
 Delta R.T.: 0.019 min
 Response: 340528150
 Conc: 484.69 ng/ml



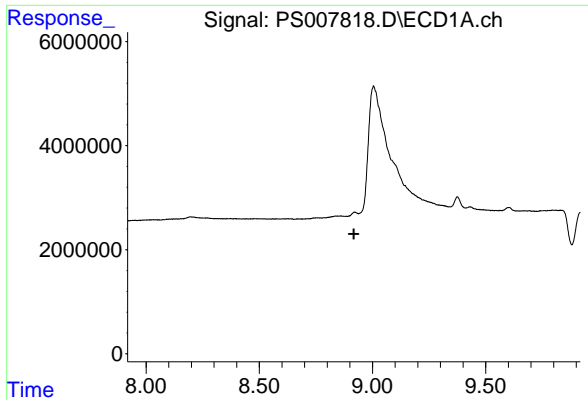
#7 MCPA

R.T.: 0.000 min
 Exp R.T. : 5.860 min
 Response: 0
 Conc: N.D.



#7 MCPA

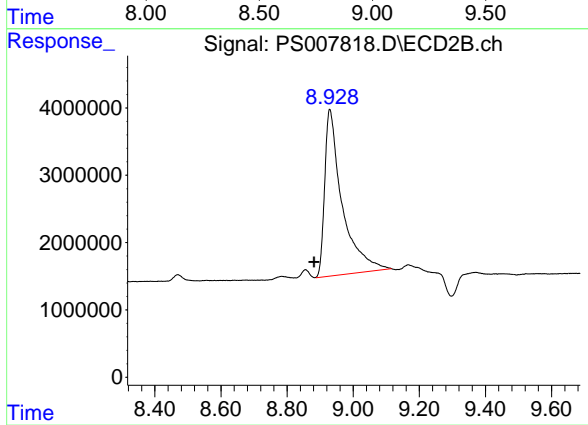
R.T.: 5.491 min
 Delta R.T.: -0.045 min
 Response: 32493031
 Conc: 10.81 ug/ml



#15 Picloram

R.T.: 0.000 min
Exp R.T.: 8.918 min
Response: 0
Conc: N.D.

Instrument :
ECD_S
ClientSampled :



#15 Picloram

R.T.: 8.929 min
Delta R.T.: 0.047 min
Response: 90664177
Conc: 15.47 ng/ml