

Data Path : Z:\pestpcbsrv\HPCHEM1\ECD\_S\Data\PS112524\  
 Data File : PS028625.D  
 Signal(s) : Signal #1: ECD1A.ch Signal #2: ECD2B.ch  
 Acq On : 25 Nov 2024 19:05  
 Operator : AR\AJ  
 Sample : P4951-01  
 Misc :  
 ALS Vial : 11 Sample Multiplier: 1

Instrument :  
 ECD\_S  
 ClientSampleId :  
 AU-05-112124

Integration File signal 1: autoint1.e  
 Integration File signal 2: autoint2.e  
 Quant Time: Nov 25 23:56:43 2024  
 Quant Method : Z:\pestpcbsrv\HPCHEM1\ECD\_S\Method\PS111324.M  
 Quant Title : 8080.M  
 QLast Update : Wed Nov 13 13:41:03 2024  
 Response via : Initial Calibration  
 Integrator: ChemStation

Volume Inj. : 1 µl  
 Signal #1 Phase : ZB-MR1 Signal #2 Phase: ZB-MR2  
 Signal #1 Info : 30M x 0.32mm x0.5 Signal #2 Info : 30M x 0.32mm x 0.25µm

Compound	RT#1	RT#2	Resp#1	Resp#2	ng/ml	ng/ml
-----						
System Monitoring Compounds						
4) S 2,4-DCAA	7.225	7.725	120.4E6	38031885	47.100	29.429 #
Target Compounds						
2) T 3,5-DICHL...	0.000	6.741f	0	4682500	N.D.	2.423
3) T 4-Nitroph...	7.027	7.278	26237618	1374923	15.448	1.592 #
6) T MCPP	7.646f	8.064	208.5E6	2950811	29.633	<MDL #
7) T MCPA	7.743f	0.000	67241260	0	6.589	N.D. #
8) T DICHLORPROP	8.160	8.688f	46462118	49790032	15.743	34.089 #
9) T 2,4-D	8.366	8.953f	42619419	16286451	13.331	10.403
10) T Pentachlo...	8.658	0.000	3284919	0	<MDL	N.D. #
11) T 2,4,5-TP ...	0.000	9.892	0	9563521	N.D.	1.133
12) T 2,4,5-T	0.000	10.294	0	32673287	N.D.	3.898
13) T 2,4-DB	10.129	10.839f	25000111	4391404	9.172	4.191 #
14) T DINOSEB	11.328	11.252	14067073	7474585	<MDL	1.352 #
15) T Picloram	11.150	12.333f	29481724	14586188	1.047	1.289
16) T DCPA	11.657f	12.333	32094017	14586188	1.220	1.504
-----						

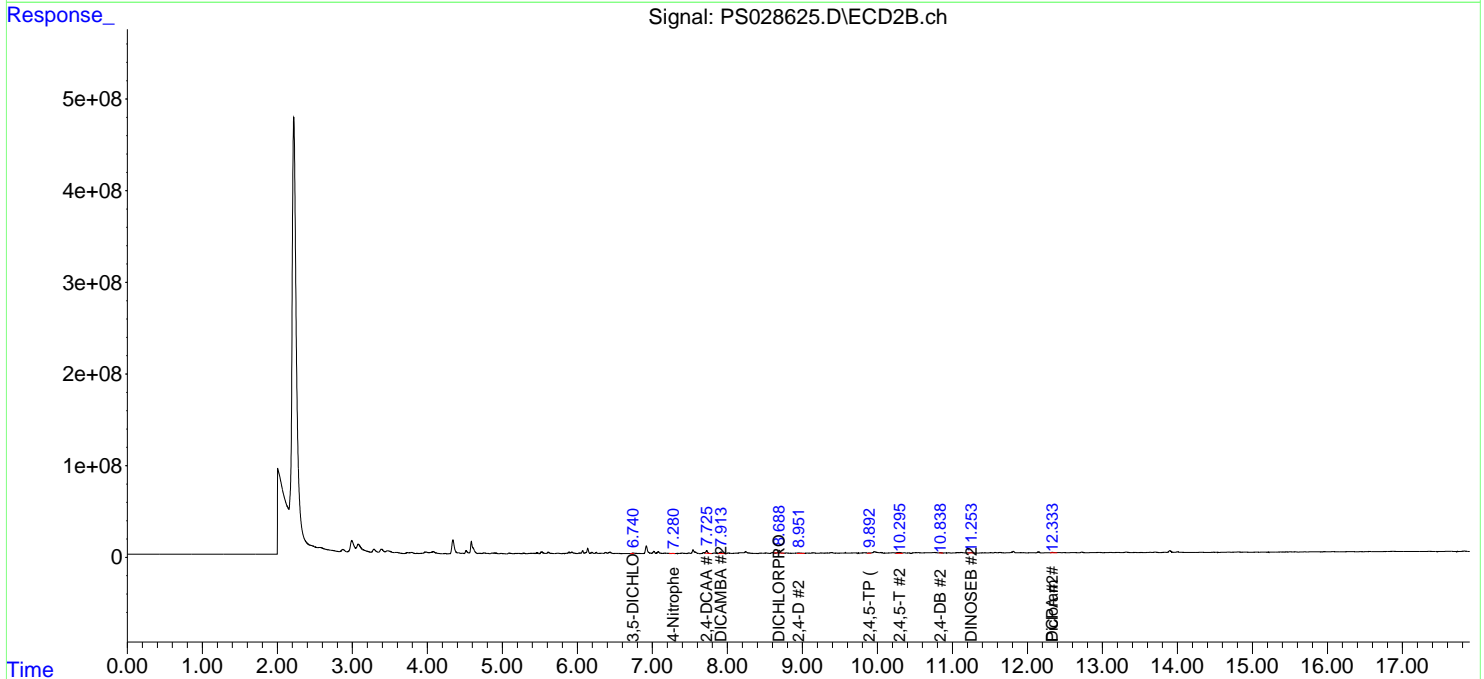
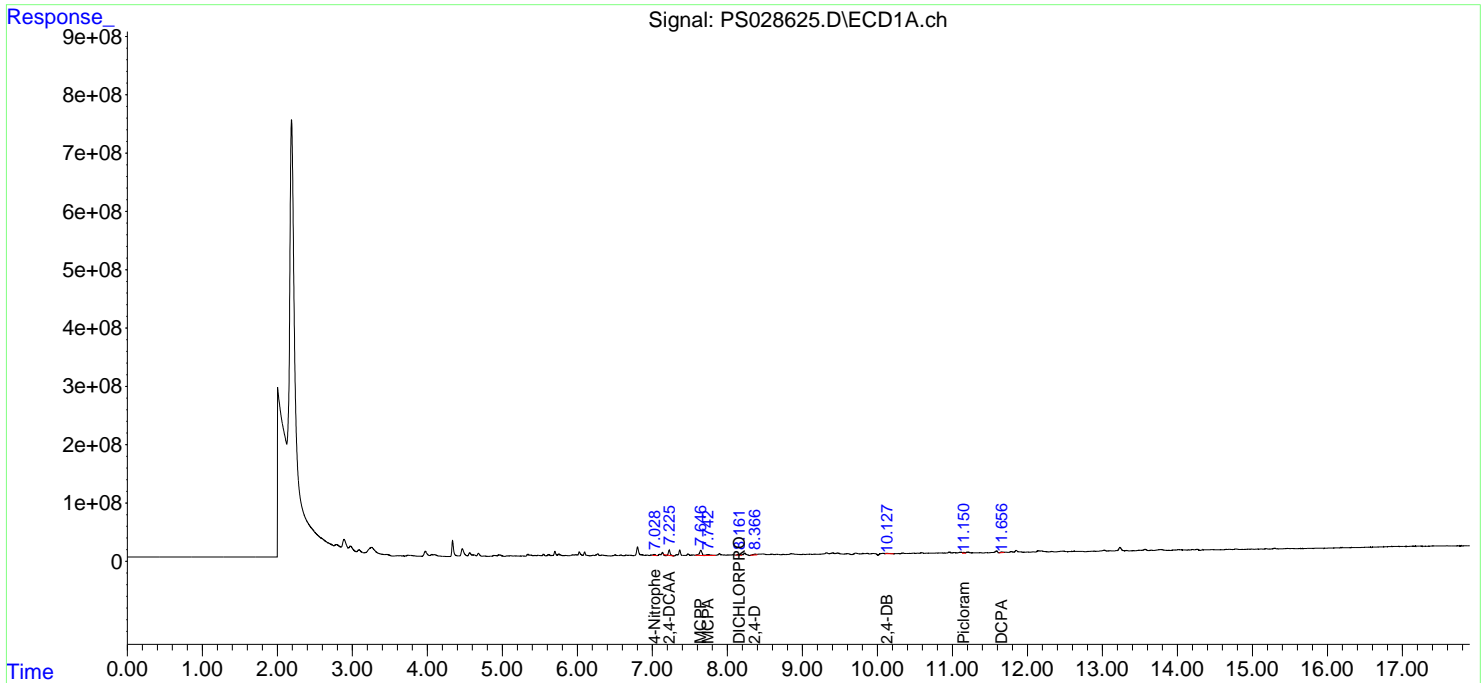
(f)=RT Delta > 1/2 Window (#)=Amounts differ by > 25% (m)=manual int.

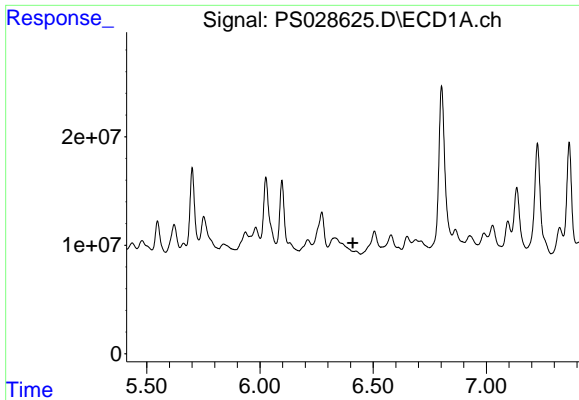
Data Path : Z:\pestpcbsrv\HPCHEM1\ECD\_S\Data\PS112524\  
 Data File : PS028625.D  
 Signal(s) : Signal #1: ECD1A.ch Signal #2: ECD2B.ch  
 Acq On : 25 Nov 2024 19:05  
 Operator : AR\AJ  
 Sample : P4951-01  
 Misc :  
 ALS Vial : 11 Sample Multiplier: 1

Instrument :  
 ECD\_S  
 ClientSampleId :  
 AU-05-112124

Integration File signal 1: autoint1.e  
 Integration File signal 2: autoint2.e  
 Quant Time: Nov 25 23:56:43 2024  
 Quant Method : Z:\pestpcbsrv\HPCHEM1\ECD\_S\Method\PS111324.M  
 Quant Title : 8080.M  
 QLast Update : Wed Nov 13 13:41:03 2024  
 Response via : Initial Calibration  
 Integrator: ChemStation

Volume Inj. : 1 µl  
 Signal #1 Phase : ZB-MR1 Signal #2 Phase: ZB-MR2  
 Signal #1 Info : 30M x 0.32mm x0.5 Signal #2 Info : 30M x 0.32mm x 0.25µm

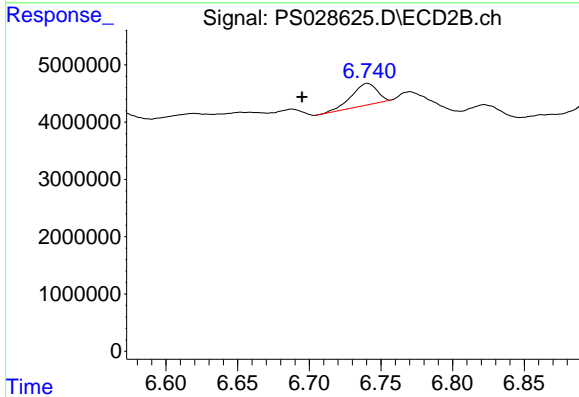




#2 3,5-DICHLOROBenZOIC ACID

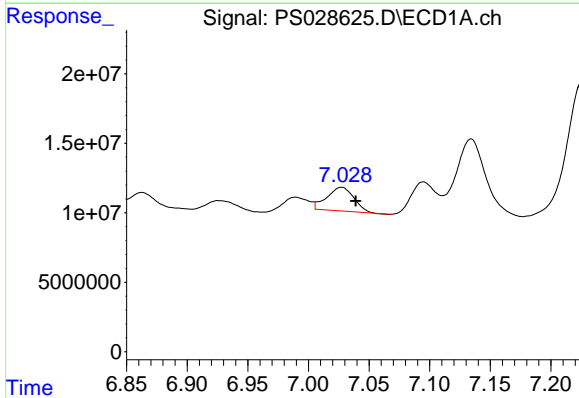
R.T.: 0.000 min  
 Exp R.T.: 6.411 min  
 Response: 0  
 Conc: N.D.

Instrument : ECD\_S  
 ClientSampleId : AU-05-112124



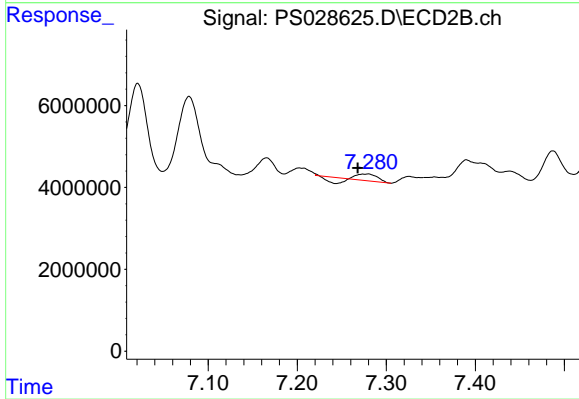
#2 3,5-DICHLOROBenZOIC ACID

R.T.: 6.741 min  
 Delta R.T.: 0.046 min  
 Response: 4682500  
 Conc: 2.42 ng/ml



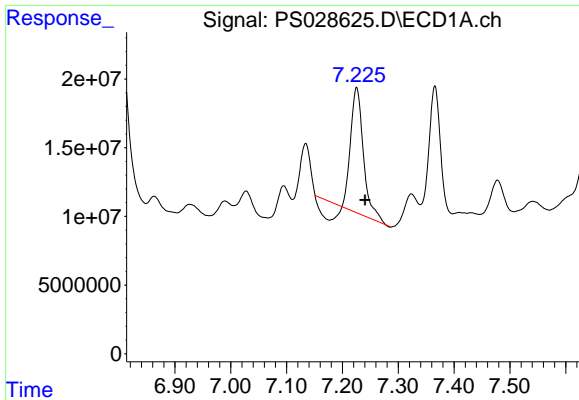
#3 4-Nitrophenol

R.T.: 7.027 min  
 Delta R.T.: -0.012 min  
 Response: 26237618  
 Conc: 15.45 ng/ml



#3 4-Nitrophenol

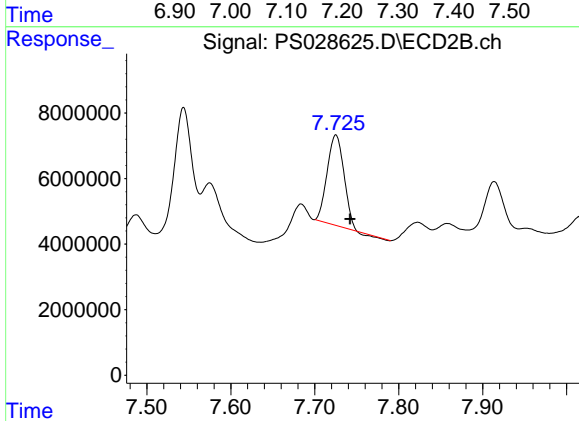
R.T.: 7.278 min  
 Delta R.T.: 0.010 min  
 Response: 1374923  
 Conc: 1.59 ng/ml



#4 2,4-DCAA

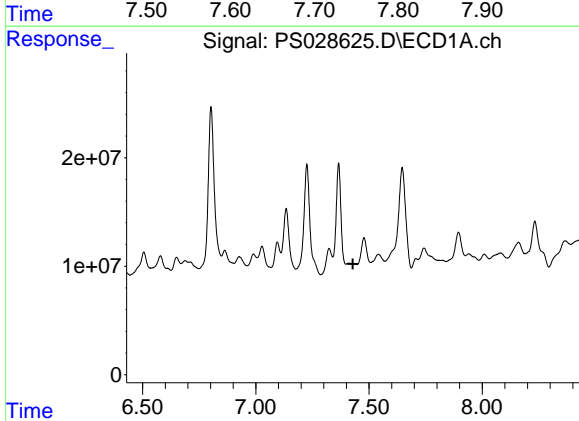
R.T.: 7.225 min  
 Delta R.T.: -0.015 min  
 Response: 120383238  
 Conc: 47.10 ng/ml

Instrument :  
 ECD\_S  
 ClientSampleId :  
 AU-05-112124



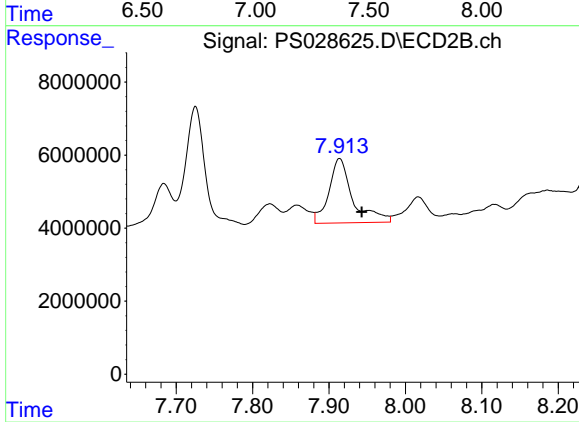
#4 2,4-DCAA

R.T.: 7.725 min  
 Delta R.T.: -0.017 min  
 Response: 38031885  
 Conc: 29.43 ng/ml



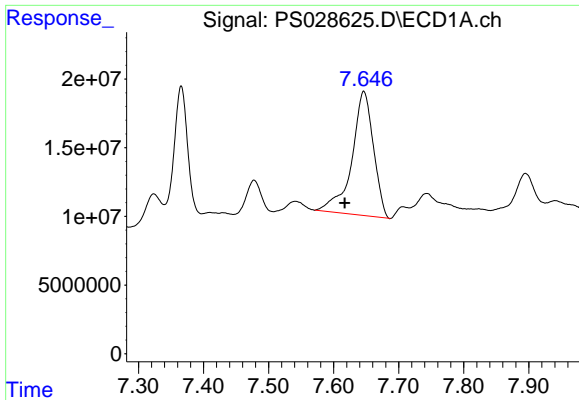
#5 DICAMBA

R.T.: 7.410 min  
 Delta R.T.: -0.019 min  
 Response: -100152137  
 Conc: N.D.



#5 DICAMBA

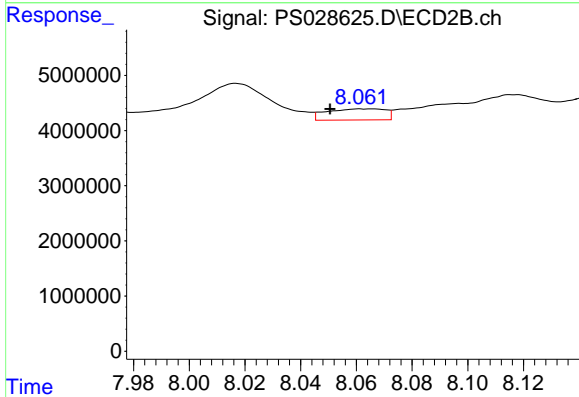
R.T.: 7.914 min  
 Delta R.T.: -0.029 min  
 Response: 38199157  
 Conc: 6.70 ng/ml



#6 MCPP

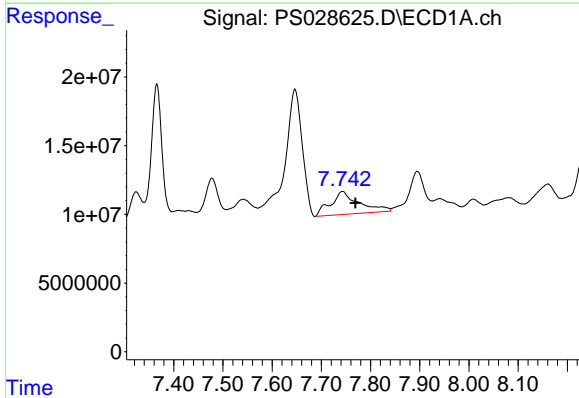
R.T.: 7.646 min  
 Delta R.T.: 0.029 min  
 Response: 208459281  
 Conc: 29.63 ug/ml

Instrument :  
 ECD\_S  
 ClientSampleId :  
 AU-05-112124



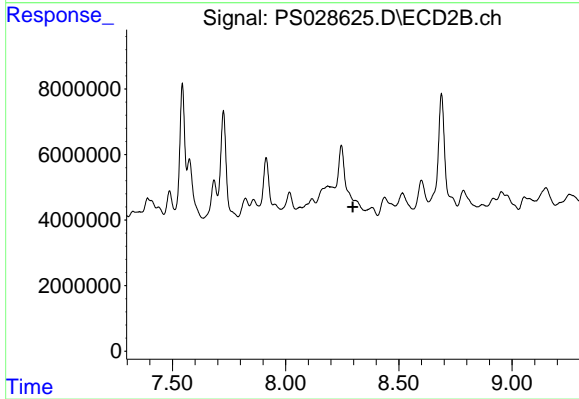
#6 MCPP

R.T.: 8.064 min  
 Delta R.T.: 0.013 min  
 Response: 2950811  
 Conc: N.D.



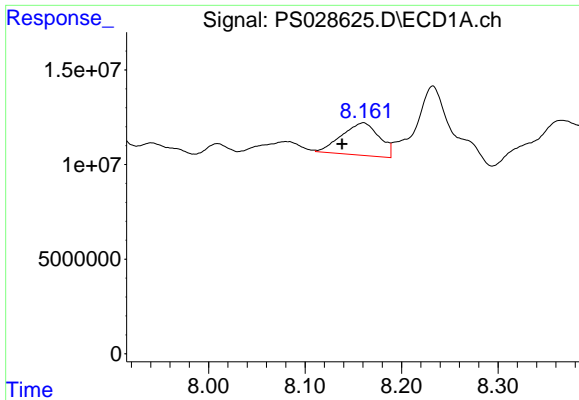
#7 MCPA

R.T.: 7.743 min  
 Delta R.T.: -0.026 min  
 Response: 67241260  
 Conc: 6.59 ug/ml



#7 MCPA

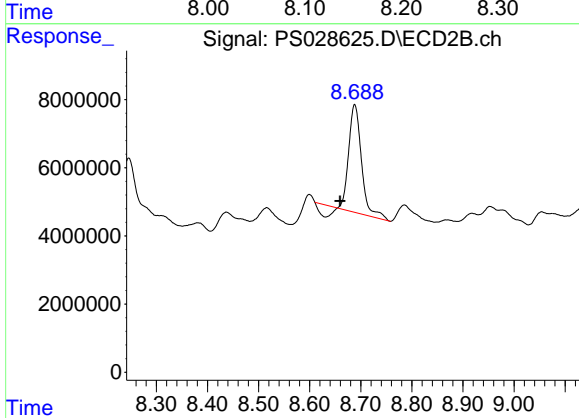
R.T.: 0.000 min  
 Exp R.T. : 8.297 min  
 Response: 0  
 Conc: N.D.



#8 DICHLORPROP

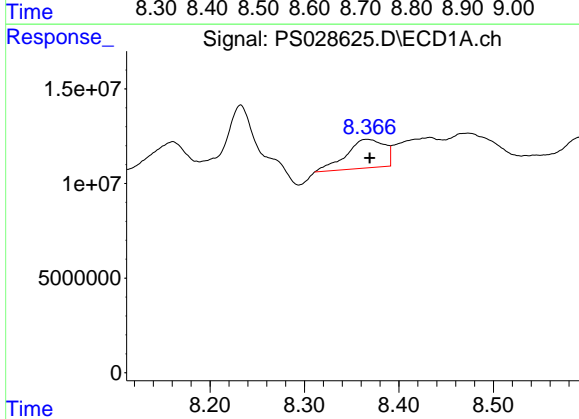
R.T.: 8.160 min  
 Delta R.T.: 0.022 min  
 Response: 46462118  
 Conc: 15.74 ng/ml

Instrument :  
 ECD\_S  
 ClientSampleId :  
 AU-05-112124



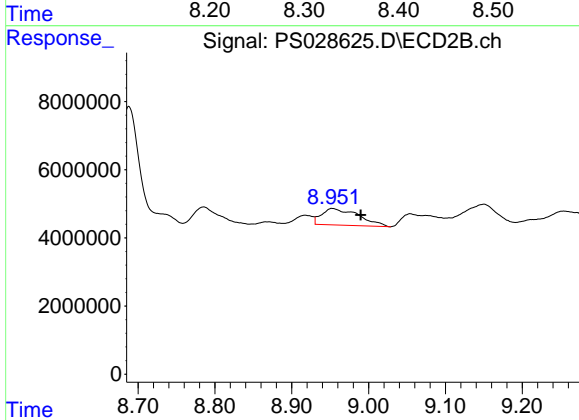
#8 DICHLORPROP

R.T.: 8.688 min  
 Delta R.T.: 0.029 min  
 Response: 49790032  
 Conc: 34.09 ng/ml



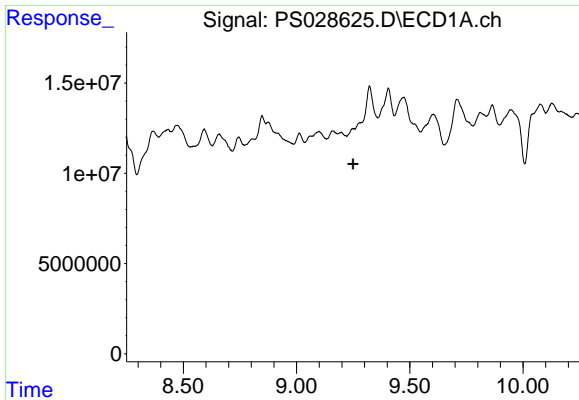
#9 2,4-D

R.T.: 8.366 min  
 Delta R.T.: -0.003 min  
 Response: 42619419  
 Conc: 13.33 ng/ml



#9 2,4-D

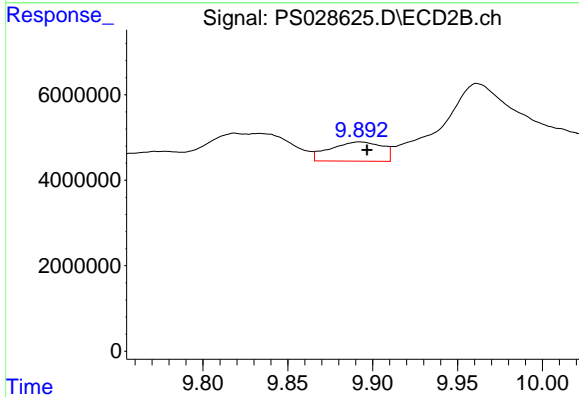
R.T.: 8.953 min  
 Delta R.T.: -0.037 min  
 Response: 16286451  
 Conc: 10.40 ng/ml



#11 2,4,5-TP (SILVEX)

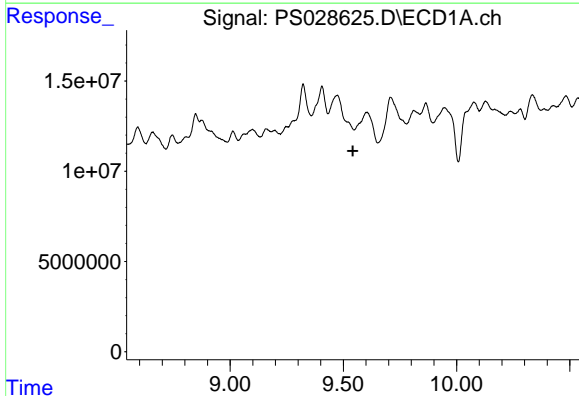
R.T.: 0.000 min  
 Exp R.T.: 9.249 min  
 Response: 0  
 Conc: N.D.

Instrument :  
 ECD\_S  
 ClientSampleId :  
 AU-05-112124



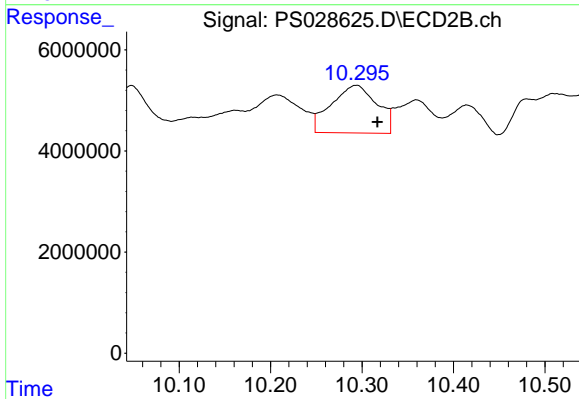
#11 2,4,5-TP (SILVEX)

R.T.: 9.892 min  
 Delta R.T.: -0.004 min  
 Response: 9563521  
 Conc: 1.13 ng/ml



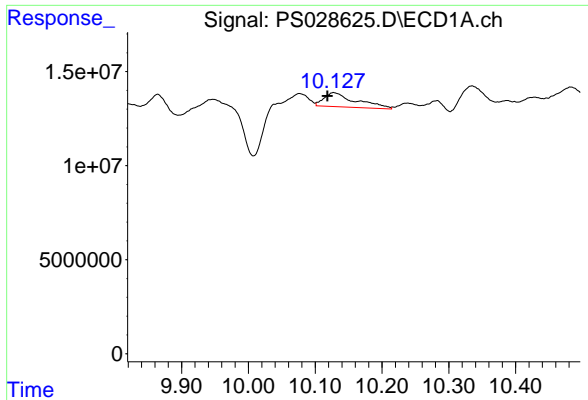
#12 2,4,5-T

R.T.: 0.000 min  
 Exp R.T.: 9.542 min  
 Response: 0  
 Conc: N.D.



#12 2,4,5-T

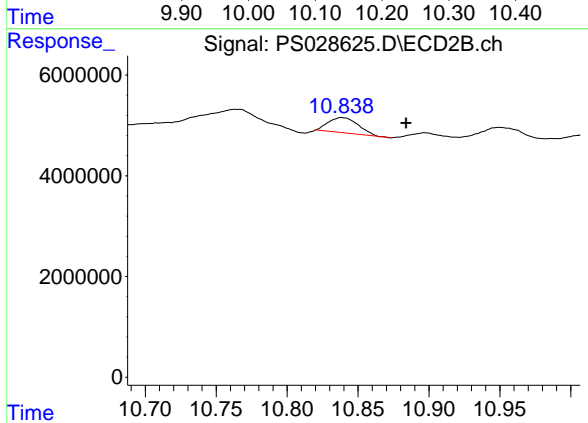
R.T.: 10.294 min  
 Delta R.T.: -0.023 min  
 Response: 32673287  
 Conc: 3.90 ng/ml



#13 2,4-DB

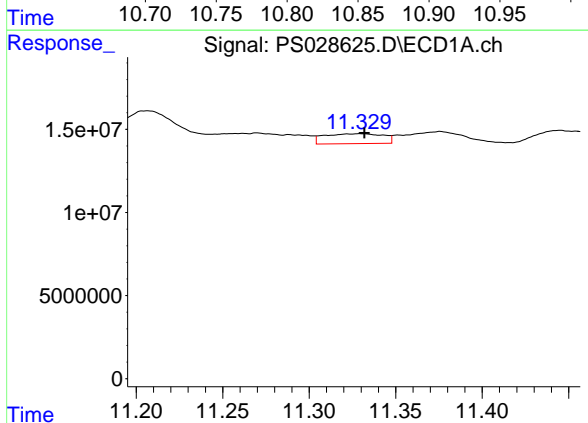
R.T.: 10.129 min  
 Delta R.T.: 0.010 min  
 Response: 25000111  
 Conc: 9.17 ng/ml

Instrument : ECD\_S  
 ClientSampleId : AU-05-112124



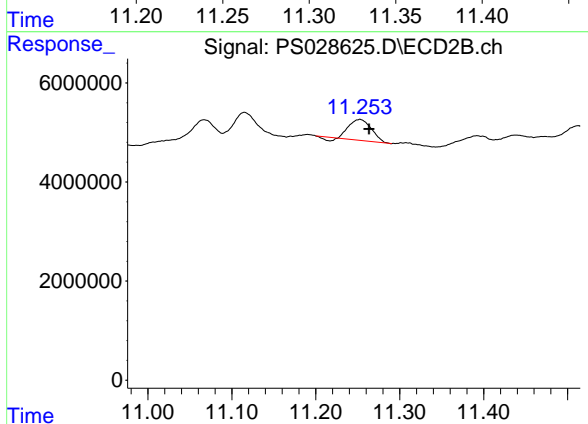
#13 2,4-DB

R.T.: 10.839 min  
 Delta R.T.: -0.045 min  
 Response: 4391404  
 Conc: 4.19 ng/ml



#14 DINOSEB

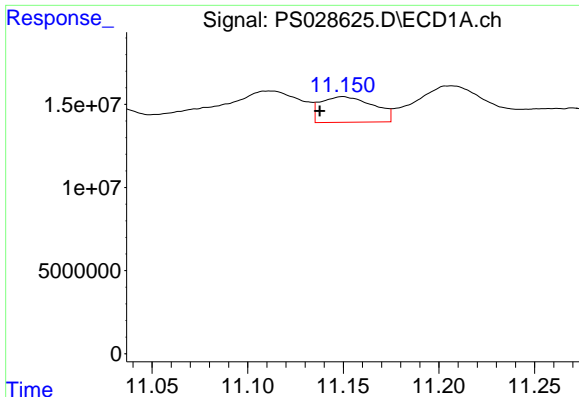
R.T.: 11.328 min  
 Delta R.T.: -0.004 min  
 Response: 14067073  
 Conc: N.D.



#14 DINOSEB

R.T.: 11.252 min  
 Delta R.T.: -0.011 min  
 Response: 7474585  
 Conc: 1.35 ng/ml

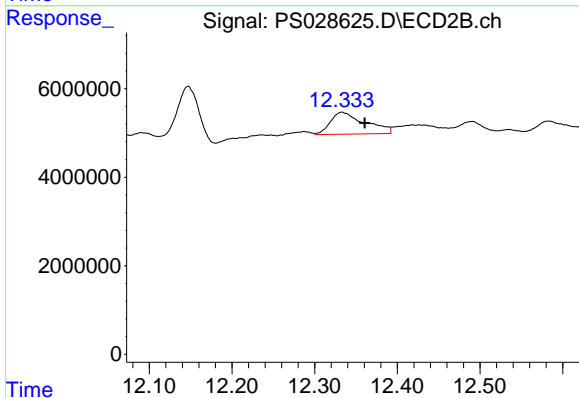




#15 Picloram

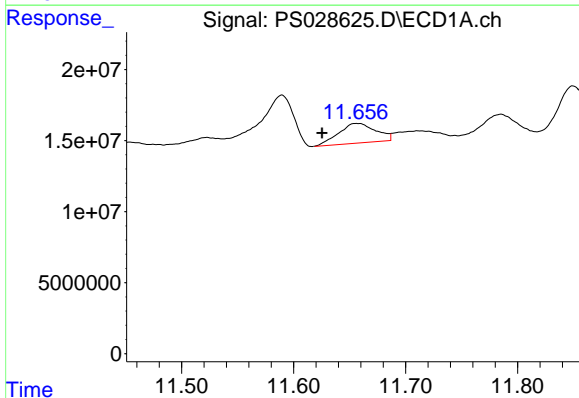
R.T.: 11.150 min  
 Delta R.T.: 0.012 min  
 Response: 29481724  
 Conc: 1.05 ng/ml

Instrument :  
 ECD\_S  
 ClientSampleId :  
 AU-05-112124



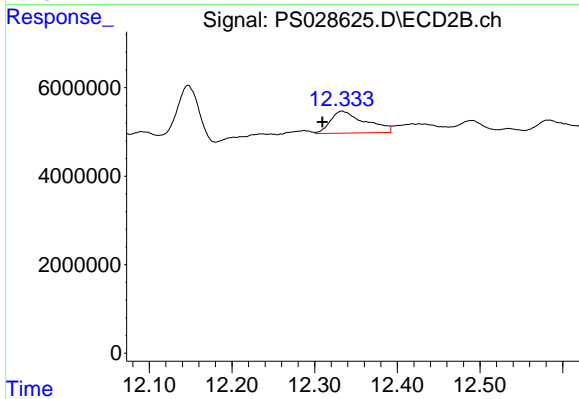
#15 Picloram

R.T.: 12.333 min  
 Delta R.T.: -0.027 min  
 Response: 14586188  
 Conc: 1.29 ng/ml



#16 DCPA

R.T.: 11.657 min  
 Delta R.T.: 0.032 min  
 Response: 32094017  
 Conc: 1.22 ng/ml



#16 DCPA

R.T.: 12.333 min  
 Delta R.T.: 0.024 min  
 Response: 14586188  
 Conc: 1.50 ng/ml