

Data Path : Z:\pestpcbsrv\HPCHEM1\ECD\_S\Data\PS112619\  
 Data File : PS007856.D  
 Signal(s) : Signal #1: ECD1A.ch Signal #2: ECD2B.ch  
 Acq On : 27 Nov 2019 10:14  
 Operator : SM\AJ  
 Sample : K5999-06MSD  
 Misc :  
 ALS Vial : 11 Sample Multiplier: 1

Instrument :  
 ECD\_S  
 ClientSampleId :

Integration File signal 1: autoint1.e  
 Integration File signal 2: autoint2.e  
 Quant Time: Nov 27 10:33:48 2019  
 Quant Method : Z:\pestpcbsrv\HPCHEM1\ECD\_S\Method\PS110619.M  
 Quant Title : 8080.M  
 QLast Update : Wed Nov 06 02:45:11 2019  
 Response via : Initial Calibration  
 Integrator: ChemStation

Volume Inj. : 2 µl  
 Signal #1 Phase : Rtx-CLPesticides Signal #2 Phase: Rtx-CLPesticides2  
 Signal #1 Info : 30M x 0.32mm x0.5 Signal #2 Info : 30M x 0.32mm x 0.25µm

	Compound	RT#1	RT#2	Resp#1	Resp#2	ng/ml	ng/ml
-----							
System Monitoring Compounds							
4) S	2,4-DCAA	5.439	5.166	353.7E6	169.8E6	256.813	241.658
Target Compounds							
1) T	Dalapon	2.020	1.734	507.8E6	545.0E6	280.694	458.976 #
2) T	3,5-DICHL...	4.815	4.476	458.8E6	254.1E6	257.137	281.279
3) T	4-Nitroph...	5.302	4.861	172.4E6	78790286	270.578	191.473 #
5) T	DICAMBA	5.587	5.289	1341.7E6	679.0E6	263.738	256.579
6) T	MCP P	5.735	5.370	86400653	44106616	22.671	22.704
7) T	MCPA	5.866	5.543	149.2E6	97223405	27.113	32.346
8) T	DICHLORPROP	6.211	5.818	321.9E6	161.4E6	254.669	246.054
9) T	2,4-D	6.427	6.088	431.1E6	242.8E6	307.376	301.131
10) T	Pentachlo...	6.681	6.448	4875.0E6	2488.7E6	257.241	254.146
11) T	2,4,5-TP ...	7.212	6.810	1914.5E6	999.3E6	254.764	255.188
12) T	2,4,5-T	7.485	7.170	2040.6E6	933.4E6	249.272	252.756
13) T	2,4-DB	8.014	7.654	194.8E6	114.4E6	182.164	234.036 #
14) T	DINOSEB	9.093	7.961	381.3E6	169.8E6	63.495	58.419
15) T	Picloram	8.933	8.897	3147.0E6	1628.7E6	283.432	277.980
16) T	DCPA	9.365	8.850	2025.6E6	822.9E6	206.523	157.477
-----							

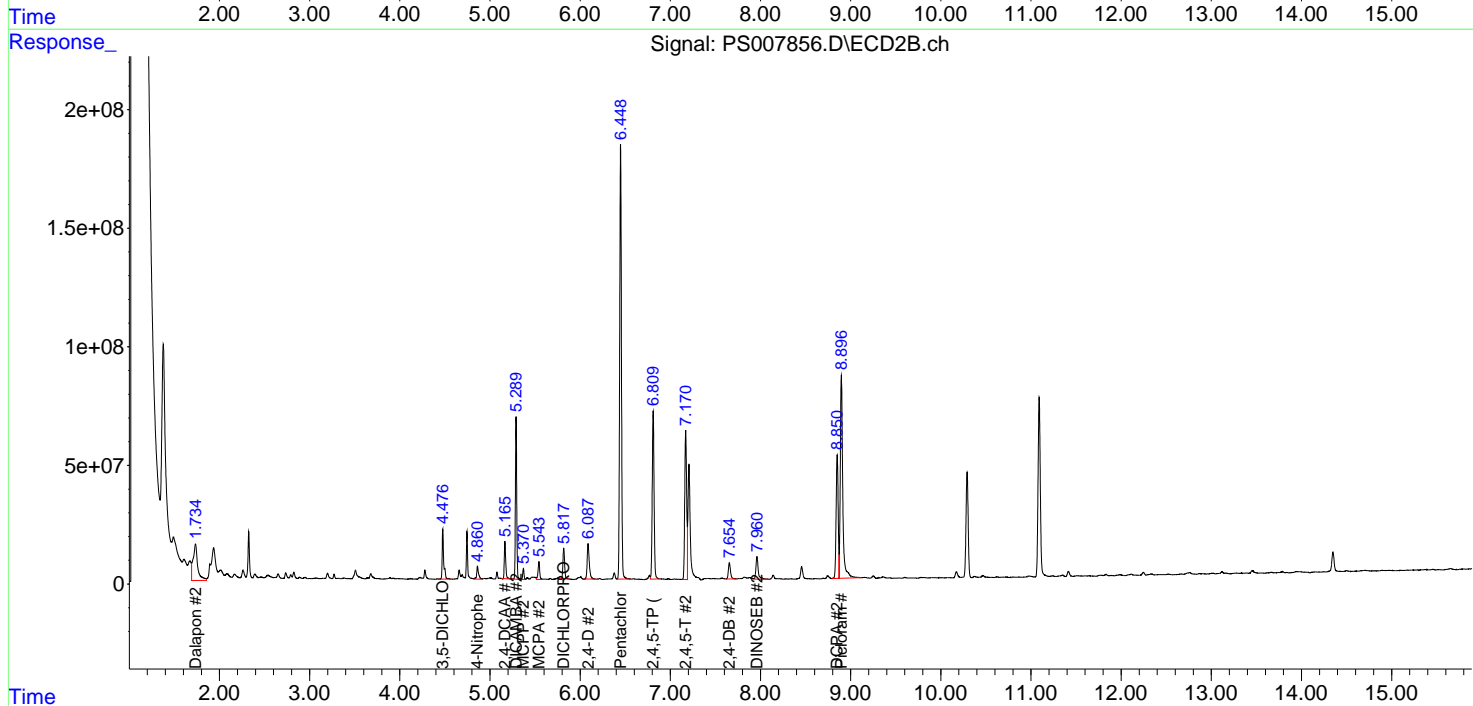
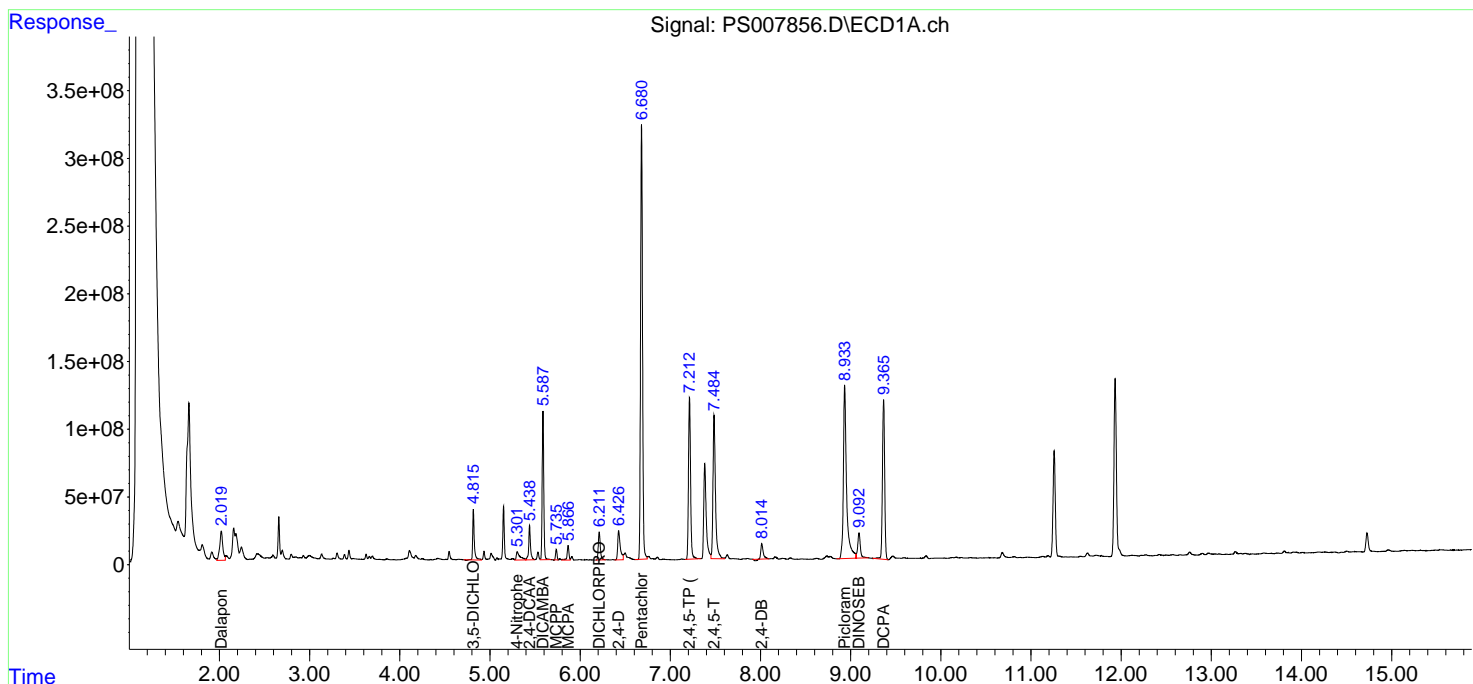
(f)=RT Delta > 1/2 Window (#)=Amounts differ by > 25% (m)=manual int.

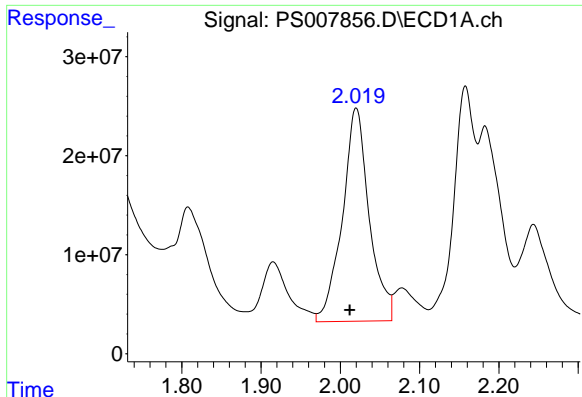
Data Path : Z:\pestpcbsrv\HPCHEM1\ECD\_S\Data\PS112619\  
 Data File : PS007856.D  
 Signal(s) : Signal #1: ECD1A.ch Signal #2: ECD2B.ch  
 Acq On : 27 Nov 2019 10:14  
 Operator : SM\AJ  
 Sample : K5999-06MSD  
 Misc :  
 ALS Vial : 11 Sample Multiplier: 1

Instrument :  
 ECD\_S  
 ClientSampled :

Integration File signal 1: autoint1.e  
 Integration File signal 2: autoint2.e  
 Quant Time: Nov 27 10:33:48 2019  
 Quant Method : Z:\pestpcbsrv\HPCHEM1\ECD\_S\Method\PS110619.M  
 Quant Title : 8080.M  
 QLast Update : Wed Nov 06 02:45:11 2019  
 Response via : Initial Calibration  
 Integrator: ChemStation

Volume Inj. : 2 µl  
 Signal #1 Phase : Rtx-CLPesticides Signal #2 Phase: Rtx-CLPesticides2  
 Signal #1 Info : 30M x 0.32mm x 0.5 Signal #2 Info : 30M x 0.32mm x 0.25µm

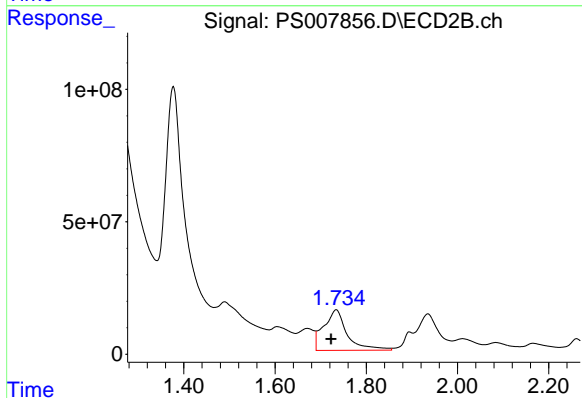




#1 Dalapon

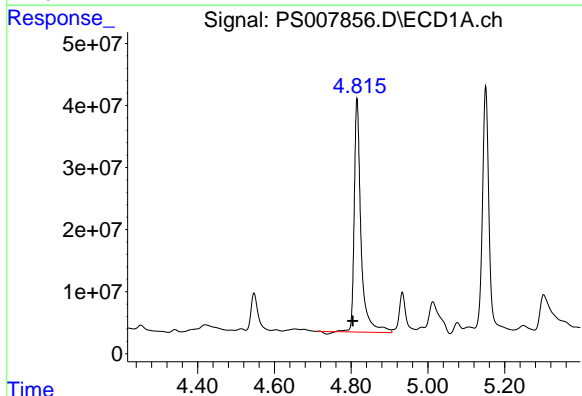
R.T.: 2.020 min  
 Delta R.T.: 0.008 min  
 Response: 507826232  
 Conc: 280.69 ng/ml

Instrument :  
 ECD\_S  
 ClientSampleId :



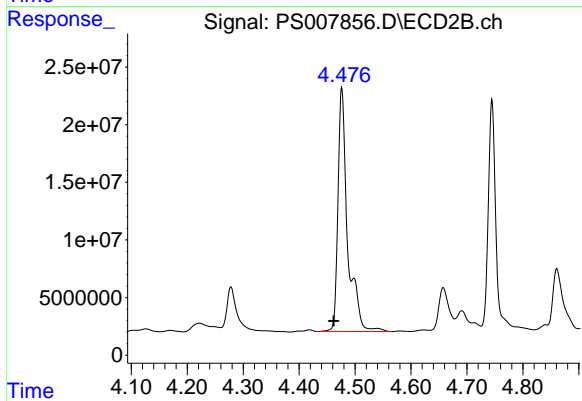
#1 Dalapon

R.T.: 1.734 min  
 Delta R.T.: 0.011 min  
 Response: 544989675  
 Conc: 458.98 ng/ml



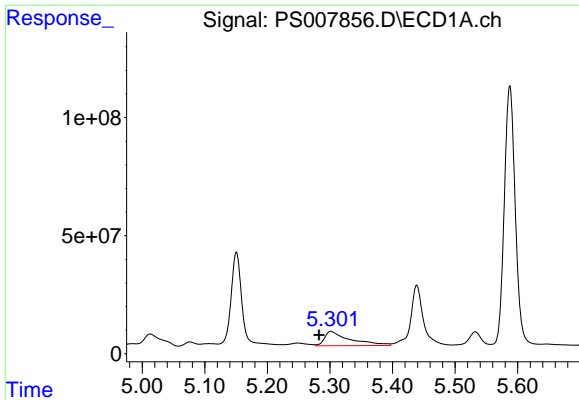
#2 3,5-DICHLOROBENZOIC ACID

R.T.: 4.815 min  
 Delta R.T.: 0.011 min  
 Response: 458759086  
 Conc: 257.14 ng/ml



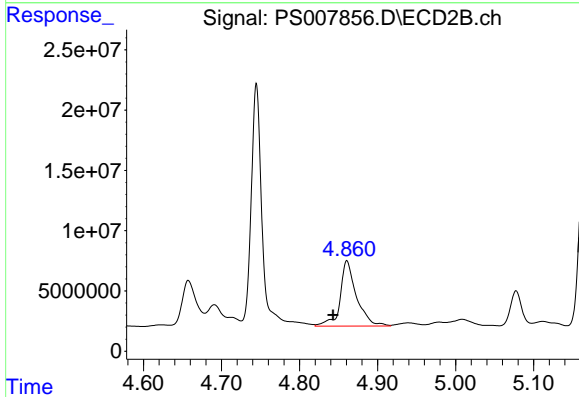
#2 3,5-DICHLOROBENZOIC ACID

R.T.: 4.476 min  
 Delta R.T.: 0.014 min  
 Response: 254115943  
 Conc: 281.28 ng/ml

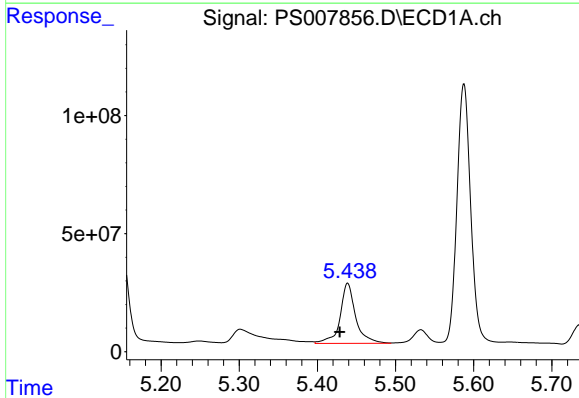


#3 4-Nitrophenol  
R.T.: 5.302 min  
Delta R.T.: 0.019 min  
Response: 172437654  
Conc: 270.58 ng/ml

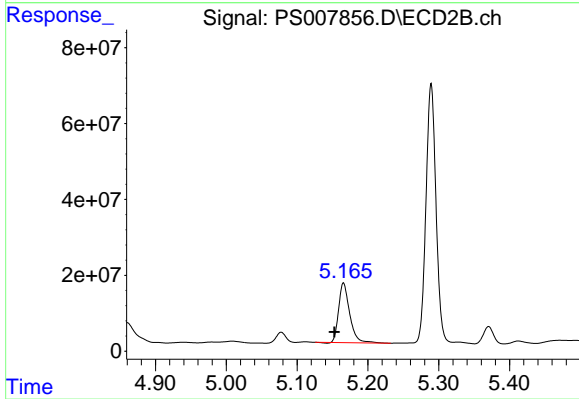
Instrument :  
ECD\_S  
ClientSampled :



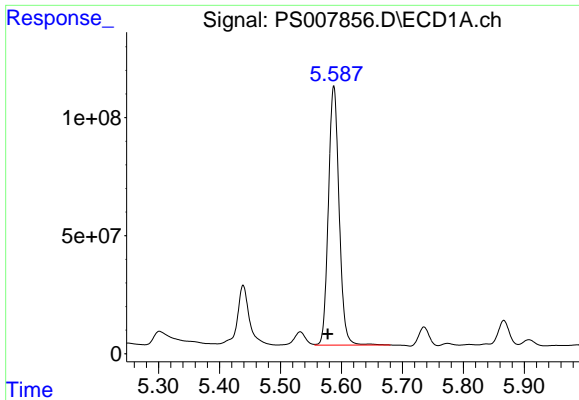
#3 4-Nitrophenol  
R.T.: 4.861 min  
Delta R.T.: 0.018 min  
Response: 78790286  
Conc: 191.47 ng/ml



#4 2,4-DCAA  
R.T.: 5.439 min  
Delta R.T.: 0.010 min  
Response: 353678254  
Conc: 256.81 ng/ml



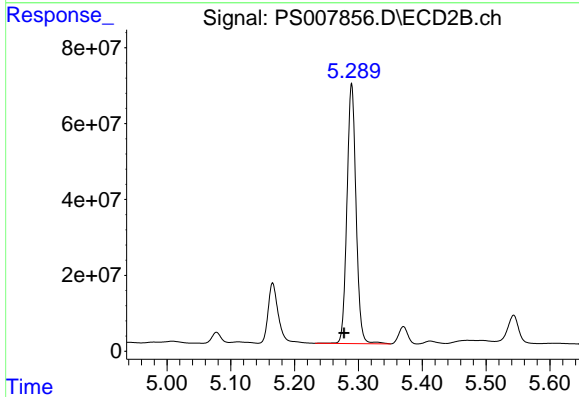
#4 2,4-DCAA  
R.T.: 5.166 min  
Delta R.T.: 0.013 min  
Response: 169780266  
Conc: 241.66 ng/ml



#5 DICAMBA

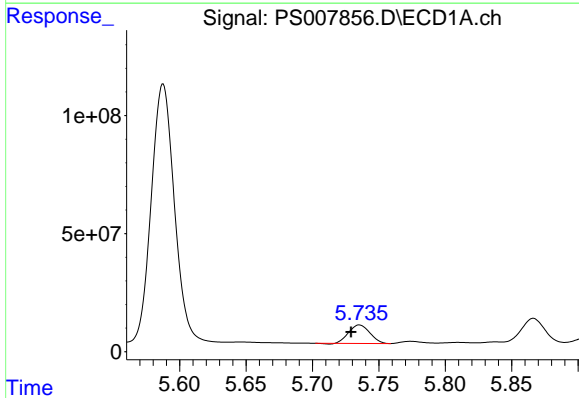
R.T.: 5.587 min  
 Delta R.T.: 0.010 min  
 Response: 1341738336  
 Conc: 263.74 ng/ml

Instrument :  
 ECD\_S  
 ClientSampleId :



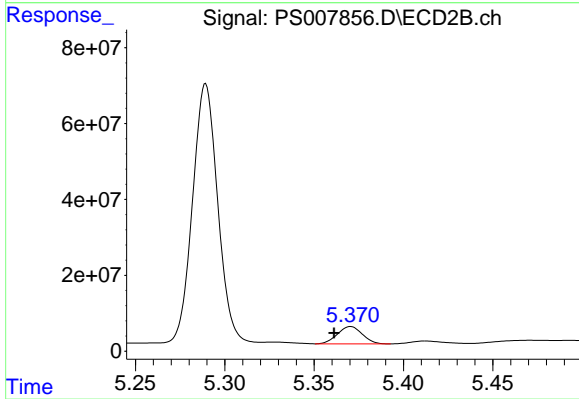
#5 DICAMBA

R.T.: 5.289 min  
 Delta R.T.: 0.012 min  
 Response: 678995239  
 Conc: 256.58 ng/ml



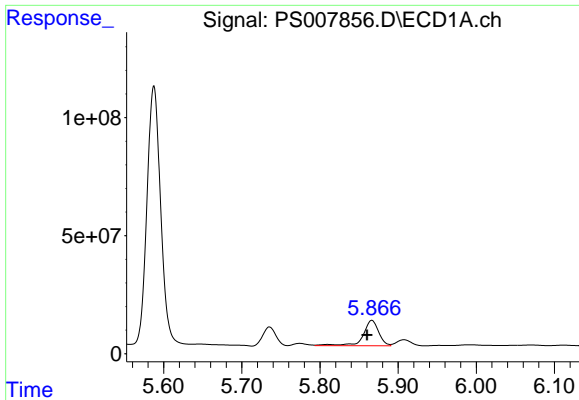
#6 MCPP

R.T.: 5.735 min  
 Delta R.T.: 0.006 min  
 Response: 86400653  
 Conc: 22.67 ug/ml



#6 MCPP

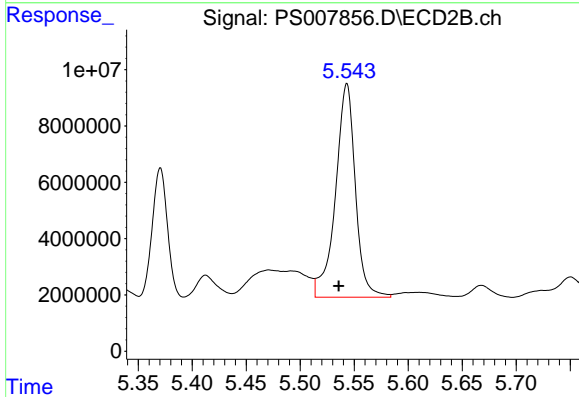
R.T.: 5.370 min  
 Delta R.T.: 0.009 min  
 Response: 44106616  
 Conc: 22.70 ug/ml



#7 MCPA

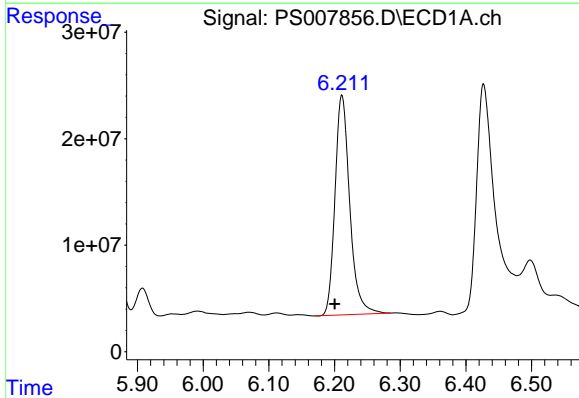
R.T.: 5.866 min  
 Delta R.T.: 0.006 min  
 Response: 149239787  
 Conc: 27.11 ug/ml

Instrument :  
 ECD\_S  
 ClientSampled :



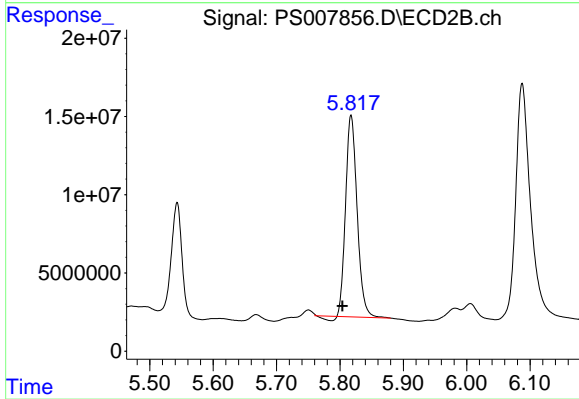
#7 MCPA

R.T.: 5.543 min  
 Delta R.T.: 0.007 min  
 Response: 97223405  
 Conc: 32.35 ug/ml



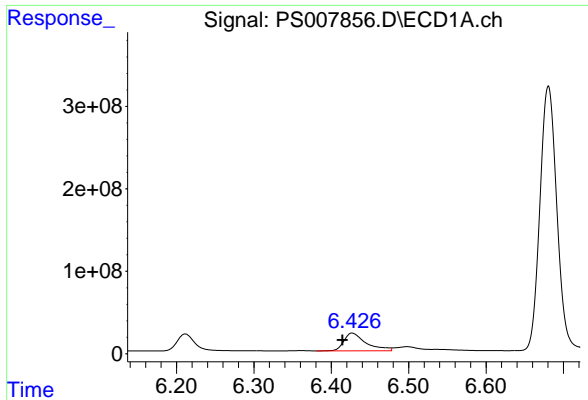
#8 DICHLORPROP

R.T.: 6.211 min  
 Delta R.T.: 0.011 min  
 Response: 321885833  
 Conc: 254.67 ng/ml



#8 DICHLORPROP

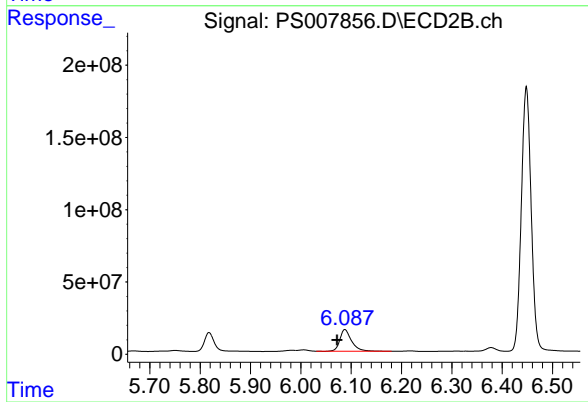
R.T.: 5.818 min  
 Delta R.T.: 0.014 min  
 Response: 161361986  
 Conc: 246.05 ng/ml



#9 2,4-D

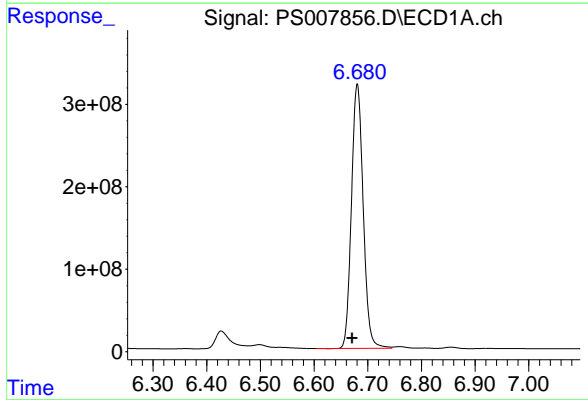
R.T.: 6.427 min  
Delta R.T.: 0.013 min  
Response: 431109440  
Conc: 307.38 ng/ml

Instrument :  
ECD\_S  
ClientSampleId :



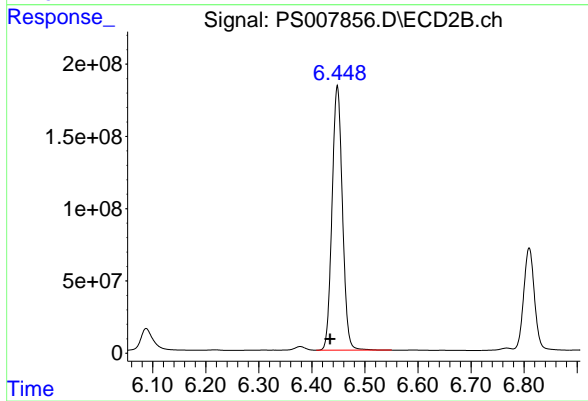
#9 2,4-D

R.T.: 6.088 min  
Delta R.T.: 0.016 min  
Response: 242831933  
Conc: 301.13 ng/ml



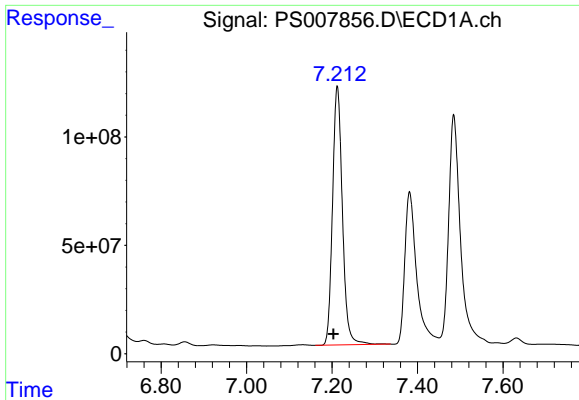
#10 Pentachlorophenol

R.T.: 6.681 min  
Delta R.T.: 0.010 min  
Response: 4874993860  
Conc: 257.24 ng/ml



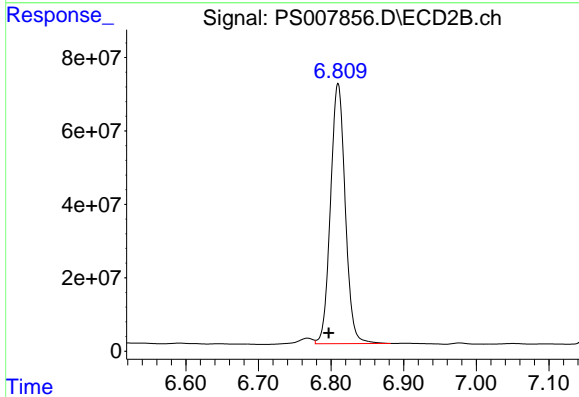
#10 Pentachlorophenol

R.T.: 6.448 min  
Delta R.T.: 0.013 min  
Response: 2488713705  
Conc: 254.15 ng/ml

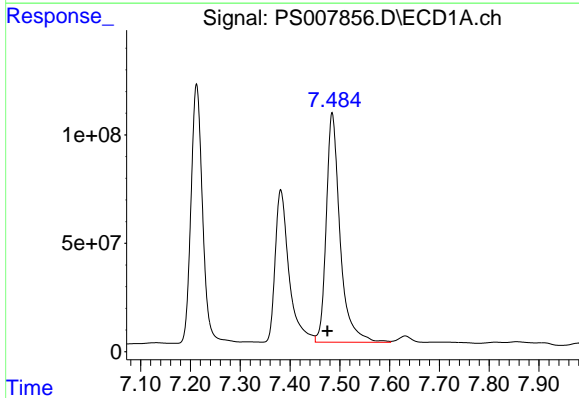


#11 2,4,5-TP (SILVEX)  
 R.T.: 7.212 min  
 Delta R.T.: 0.009 min  
 Response: 1914545085  
 Conc: 254.76 ng/ml

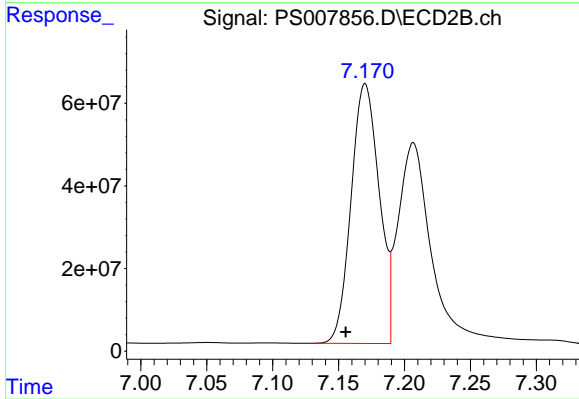
Instrument :  
 ECD\_S  
 ClientSampleId :



#11 2,4,5-TP (SILVEX)  
 R.T.: 6.810 min  
 Delta R.T.: 0.013 min  
 Response: 999279693  
 Conc: 255.19 ng/ml

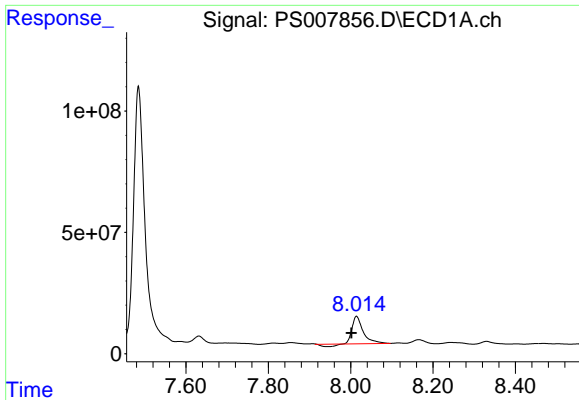


#12 2,4,5-T  
 R.T.: 7.485 min  
 Delta R.T.: 0.010 min  
 Response: 2040552458  
 Conc: 249.27 ng/ml



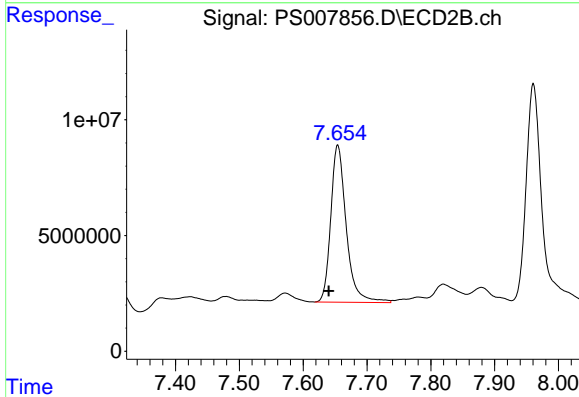
#12 2,4,5-T  
 R.T.: 7.170 min  
 Delta R.T.: 0.015 min  
 Response: 933402313  
 Conc: 252.76 ng/ml



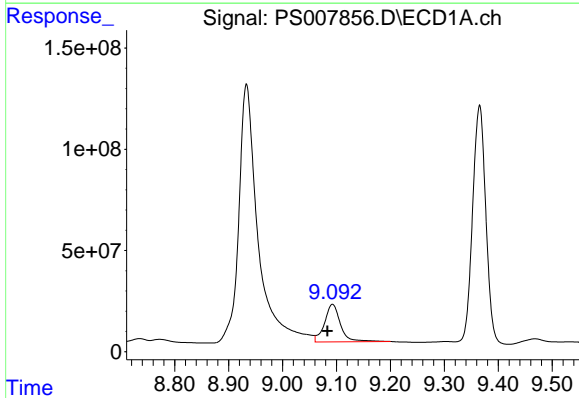


#13 2,4-DB  
 R.T.: 8.014 min  
 Delta R.T.: 0.013 min  
 Response: 194809181  
 Conc: 182.16 ng/ml

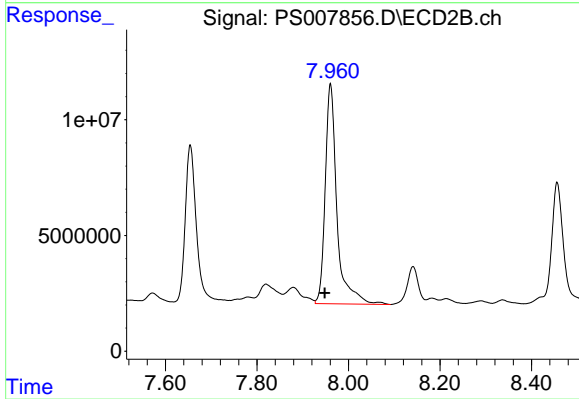
Instrument :  
 ECD\_S  
 ClientSampleId :



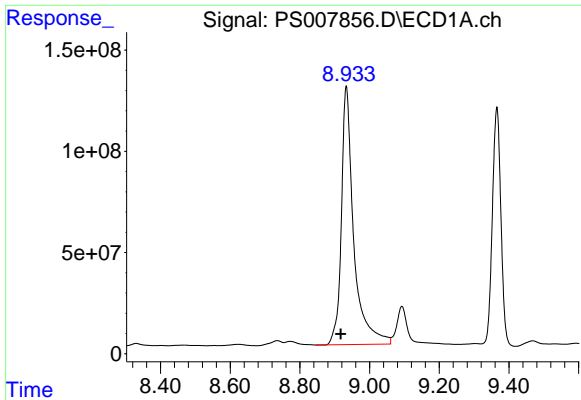
#13 2,4-DB  
 R.T.: 7.654 min  
 Delta R.T.: 0.014 min  
 Response: 114410668  
 Conc: 234.04 ng/ml



#14 DINOSEB  
 R.T.: 9.093 min  
 Delta R.T.: 0.009 min  
 Response: 381315785  
 Conc: 63.49 ng/ml



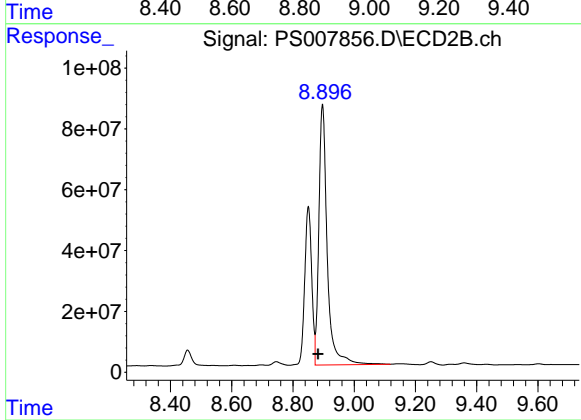
#14 DINOSEB  
 R.T.: 7.961 min  
 Delta R.T.: 0.012 min  
 Response: 169833220  
 Conc: 58.42 ng/ml



#15 Picloram

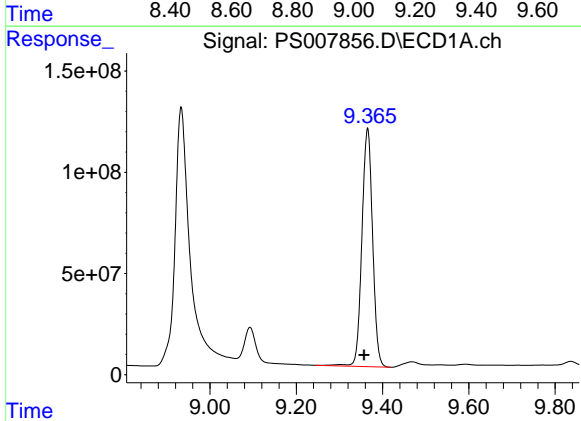
R.T.: 8.933 min  
 Delta R.T.: 0.015 min  
 Response: 3146989329  
 Conc: 283.43 ng/ml

Instrument :  
 ECD\_S  
 ClientSampled :



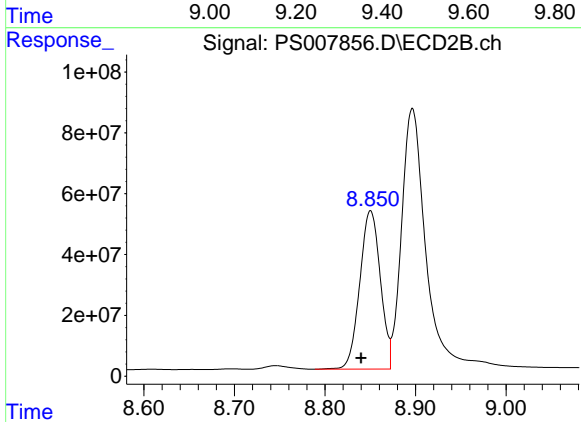
#15 Picloram

R.T.: 8.897 min  
 Delta R.T.: 0.015 min  
 Response: 1628668162  
 Conc: 277.98 ng/ml



#16 DCPA

R.T.: 9.365 min  
 Delta R.T.: 0.009 min  
 Response: 2025602708  
 Conc: 206.52 ng/ml



#16 DCPA

R.T.: 8.850 min  
 Delta R.T.: 0.010 min  
 Response: 822855848  
 Conc: 157.48 ng/ml