

Data Path : Z:\pestpcbsrv\HPCHEM1\ECD\_S\Data\PS112624\  
 Data File : PS028655.D  
 Signal(s) : Signal #1: ECD1A.ch Signal #2: ECD2B.ch  
 Acq On : 26 Nov 2024 23:37  
 Operator : AR\AJ  
 Sample : HSTDCCC750  
 Misc :  
 ALS Vial : 5 Sample Multiplier: 1

Instrument :  
 ECD\_S  
 ClientSampleId :  
 HSTDCCC750

Integration File signal 1: autoint1.e  
 Integration File signal 2: autoint2.e  
 Quant Time: Nov 26 23:26:19 2024  
 Quant Method : Z:\pestpcbsrv\HPCHEM1\ECD\_S\Method\PS112624.M  
 Quant Title : 8080.M  
 QLast Update : Tue Nov 26 14:44:30 2024  
 Response via : Initial Calibration  
 Integrator: ChemStation

Volume Inj. : 1 µl  
 Signal #1 Phase : ZB-MR1 Signal #2 Phase: ZB-MR2  
 Signal #1 Info : 30M x 0.32mm x0.5 Signal #2 Info : 30M x 0.32mm x 0.25µm

Compound	RT#1	RT#2	Resp#1	Resp#2	ng/ml	ng/ml
-----						
System Monitoring Compounds						
4) S 2,4-DCAA	7.227	7.724	2280.1E6	1013.7E6	850.040	752.570
Target Compounds						
1) T Dalapon	2.629	2.688	1943.2E6	1450.5E6	669.641	664.189
2) T 3,5-DICHL...	6.400	6.681	2660.8E6	1376.9E6	694.776	701.027
3) T 4-Nitroph...	7.026	7.251	1165.7E6	621.3E6	678.150	681.105
5) T DICAMBA	7.414	7.923	8102.4E6	4462.1E6	705.755	724.805
6) T MCPP	7.597	8.026	528.4E6	303.8E6	72.408	70.537
7) T MCPA	7.747	8.271	729.9E6	425.4E6	70.595	68.542
8) T DICHLORPROP	8.121	8.638	2152.8E6	1136.6E6	691.513	710.980
9) T 2,4-D	8.351	8.968	2340.0E6	1210.0E6	693.907	715.562
10) T Pentachlo...	8.650	9.495	32773.0E6	16798.6E6	743.277	733.856
11) T 2,4,5-TP ...	9.228	9.871	13030.3E6	6957.6E6	712.828	729.114
12) T 2,4,5-T	9.520	10.291	13370.1E6	6770.5E6	712.863	727.211
13) T 2,4-DB	10.093	10.857	2503.8E6	822.7E6	706.945	717.396
14) T DINOSEB	11.304	11.236	10573.0E6	4466.7E6	703.636	711.712
15) T Picloram	11.111	12.327	20923.5E6	9300.0E6	703.624	721.450
16) T DCPA	11.597	12.279	19850.7E6	8169.4E6	721.971	736.168
-----						

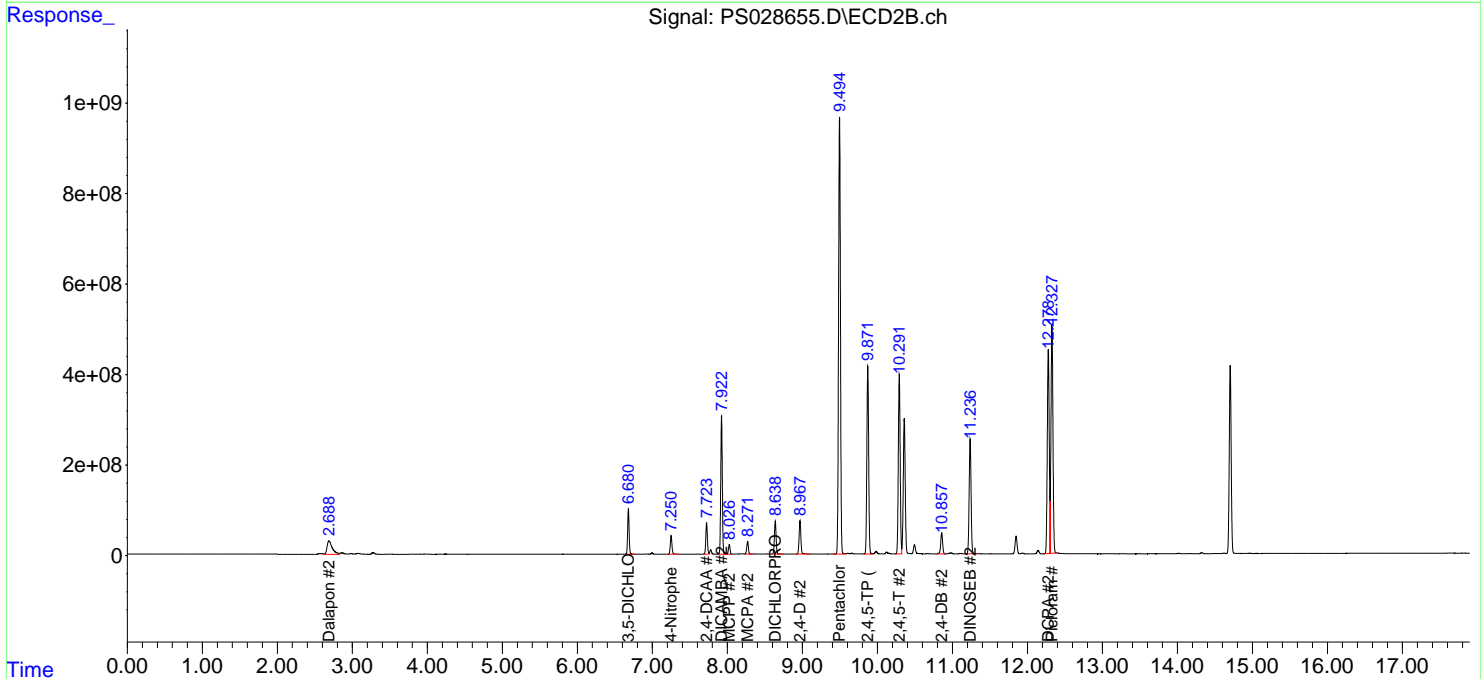
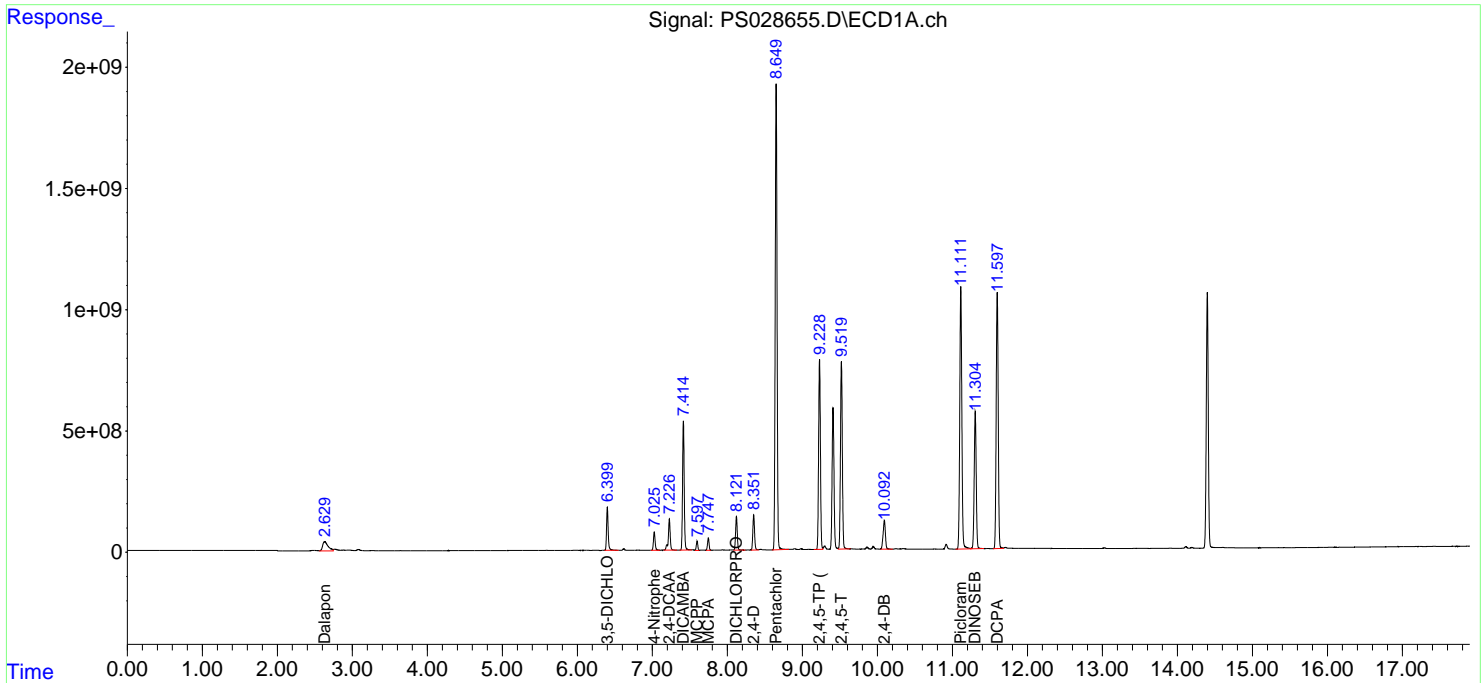
(f)=RT Delta > 1/2 Window (#)=Amounts differ by > 25% (m)=manual int.

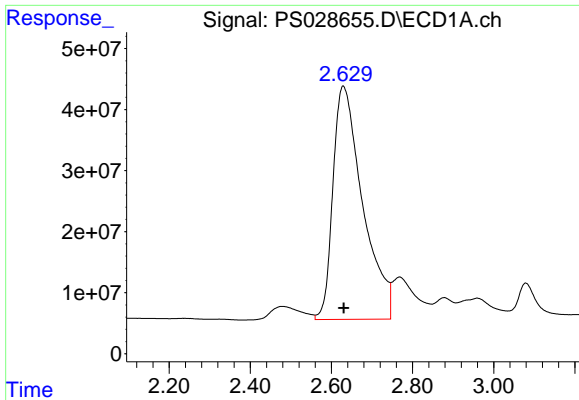
Data Path : Z:\pestpcbsrv\HPCHEM1\ECD\_S\Data\PS112624\  
 Data File : PS028655.D  
 Signal(s) : Signal #1: ECD1A.ch Signal #2: ECD2B.ch  
 Acq On : 26 Nov 2024 23:37  
 Operator : AR\AJ  
 Sample : HSTDCCC750  
 Misc :  
 ALS Vial : 5 Sample Multiplier: 1

Instrument :  
 ECD\_S  
 ClientSampleId :  
 HSTDCCC750

Integration File signal 1: autoint1.e  
 Integration File signal 2: autoint2.e  
 Quant Time: Nov 26 23:26:19 2024  
 Quant Method : Z:\pestpcbsrv\HPCHEM1\ECD\_S\Method\PS112624.M  
 Quant Title : 8080.M  
 QLast Update : Tue Nov 26 14:44:30 2024  
 Response via : Initial Calibration  
 Integrator: ChemStation

Volume Inj. : 1 µl  
 Signal #1 Phase : ZB-MR1 Signal #2 Phase: ZB-MR2  
 Signal #1 Info : 30M x 0.32mm x0.5 Signal #2 Info : 30M x 0.32mm x 0.25µm

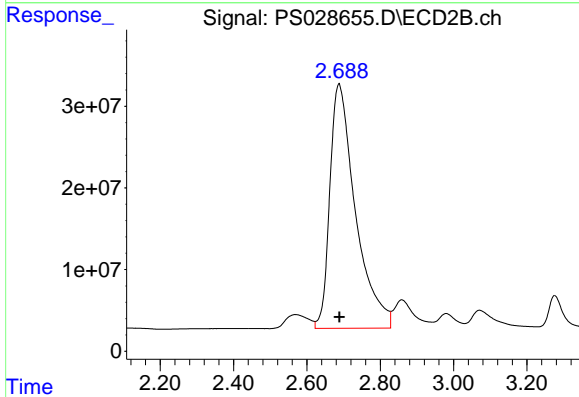




#1 Dalapon

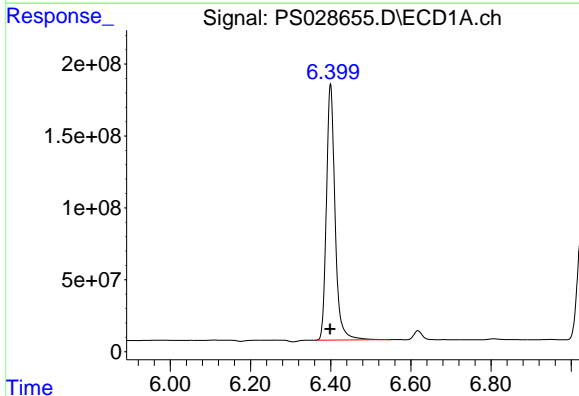
R.T.: 2.629 min  
 Delta R.T.: 0.000 min  
 Response: 1943196011  
 Conc: 669.64 ng/ml

Instrument :  
 ECD\_S  
 ClientSampleId :  
 HSTDCCC750



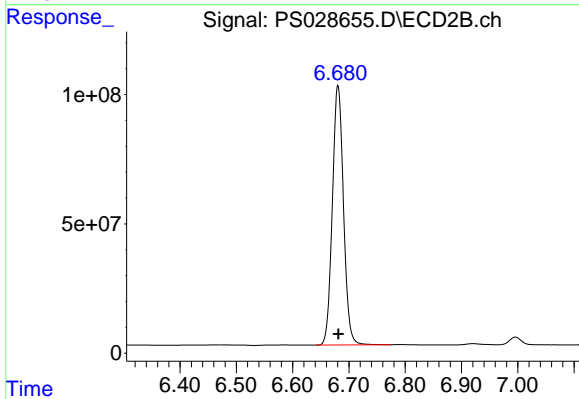
#1 Dalapon

R.T.: 2.688 min  
 Delta R.T.: 0.000 min  
 Response: 1450463605  
 Conc: 664.19 ng/ml



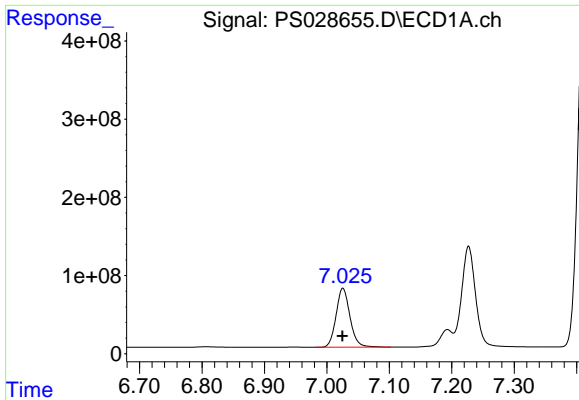
#2 3,5-DICHLOROBENZOIC ACID

R.T.: 6.400 min  
 Delta R.T.: 0.000 min  
 Response: 2660751335  
 Conc: 694.78 ng/ml



#2 3,5-DICHLOROBENZOIC ACID

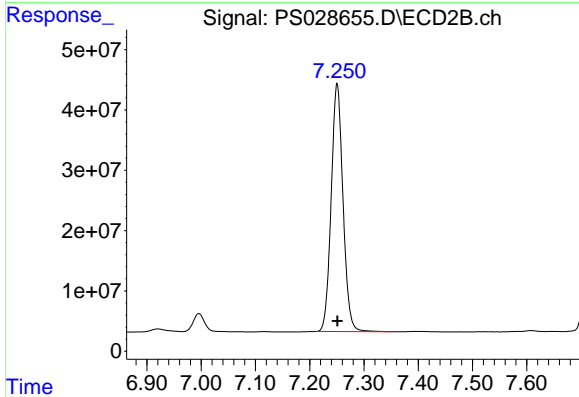
R.T.: 6.681 min  
 Delta R.T.: 0.000 min  
 Response: 1376880423  
 Conc: 701.03 ng/ml



#3 4-Nitrophenol

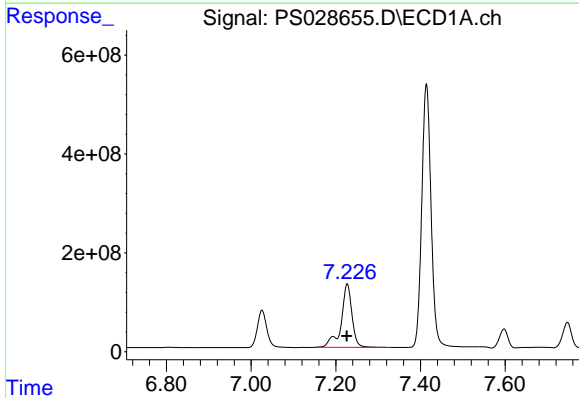
R.T.: 7.026 min  
 Delta R.T.: 0.000 min  
 Response: 1165721293  
 Conc: 678.15 ng/ml

Instrument :  
 ECD\_S  
 ClientSampleId :  
 HSTDCCC750



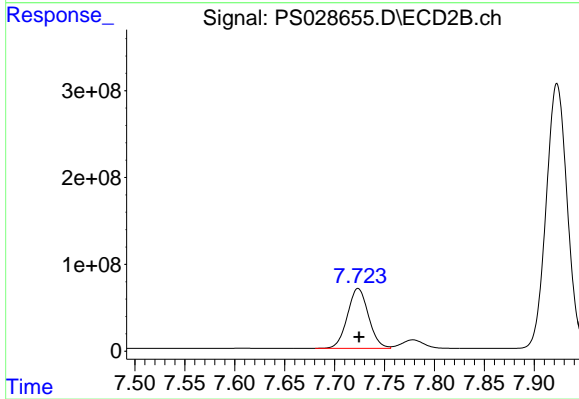
#3 4-Nitrophenol

R.T.: 7.251 min  
 Delta R.T.: 0.000 min  
 Response: 621259255  
 Conc: 681.10 ng/ml



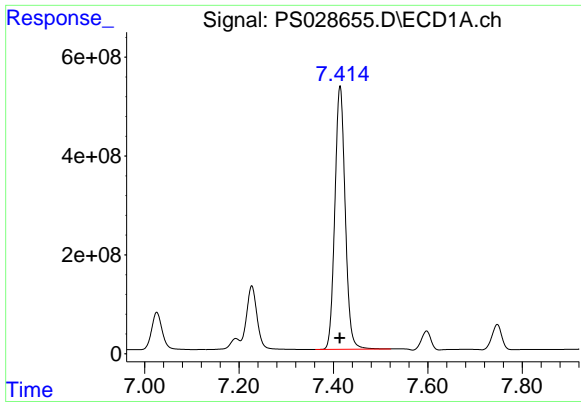
#4 2,4-DCAA

R.T.: 7.227 min  
 Delta R.T.: 0.000 min  
 Response: 2280099449  
 Conc: 850.04 ng/ml



#4 2,4-DCAA

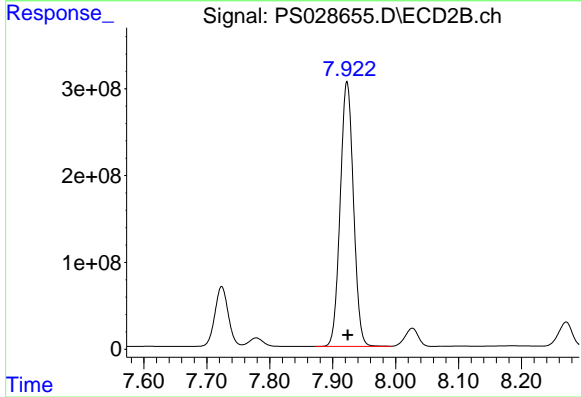
R.T.: 7.724 min  
 Delta R.T.: 0.000 min  
 Response: 1013734406  
 Conc: 752.57 ng/ml



#5 DICAMBA

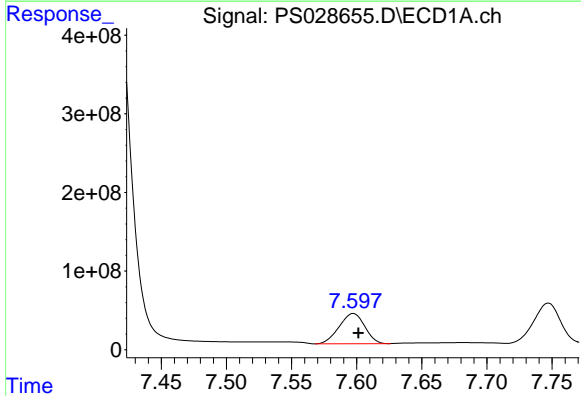
R.T.: 7.414 min  
 Delta R.T.: 0.000 min  
 Response: 8102445787  
 Conc: 705.76 ng/ml

Instrument :  
 ECD\_S  
 ClientSampleId :  
 HSTDCCC750



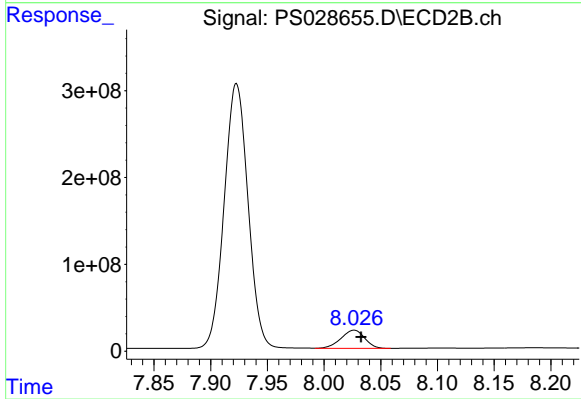
#5 DICAMBA

R.T.: 7.923 min  
 Delta R.T.: -0.001 min  
 Response: 4462058745  
 Conc: 724.81 ng/ml



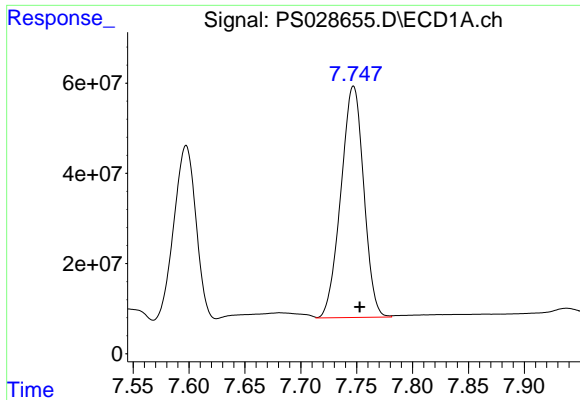
#6 MCP

R.T.: 7.597 min  
 Delta R.T.: -0.004 min  
 Response: 528393121  
 Conc: 72.41 ug/ml



#6 MCP

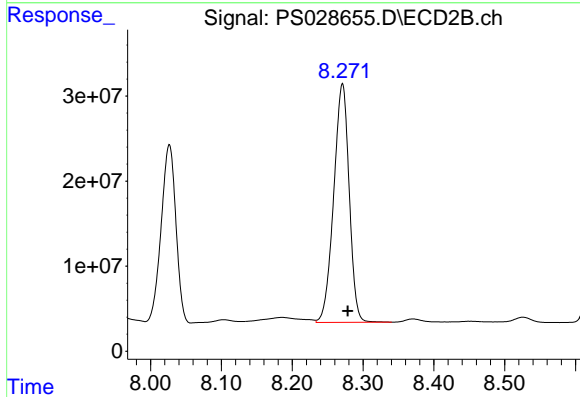
R.T.: 8.026 min  
 Delta R.T.: -0.006 min  
 Response: 303841366  
 Conc: 70.54 ug/ml



#7 MCPA

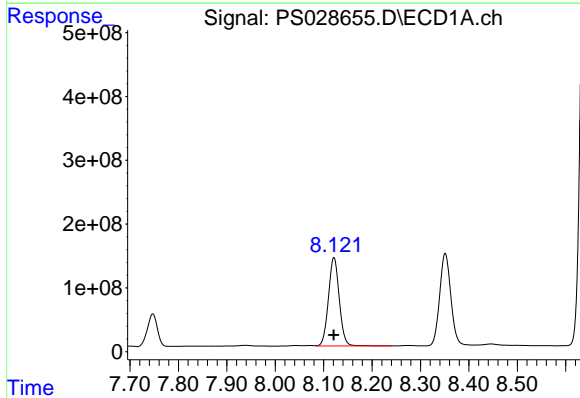
R.T.: 7.747 min  
 Delta R.T.: -0.006 min  
 Response: 729880792  
 Conc: 70.59 ug/ml

Instrument :  
 ECD\_S  
 ClientSampleId :  
 HSTDCCC750



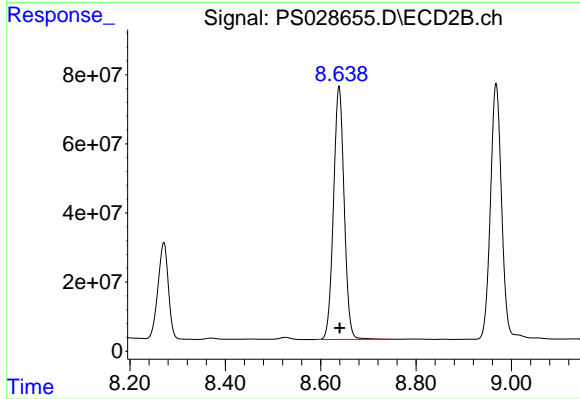
#7 MCPA

R.T.: 8.271 min  
 Delta R.T.: -0.008 min  
 Response: 425373516  
 Conc: 68.54 ug/ml



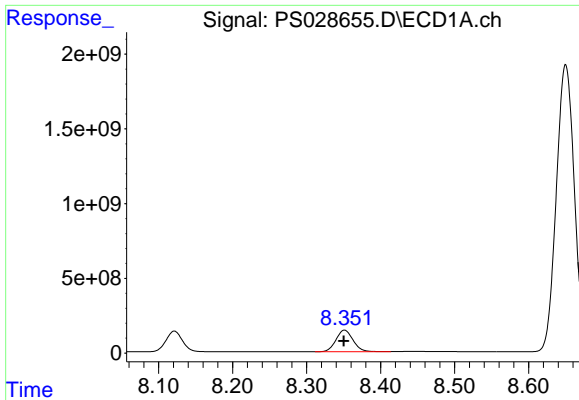
#8 DICHLORPROP

R.T.: 8.121 min  
 Delta R.T.: 0.000 min  
 Response: 2152751166  
 Conc: 691.51 ng/ml



#8 DICHLORPROP

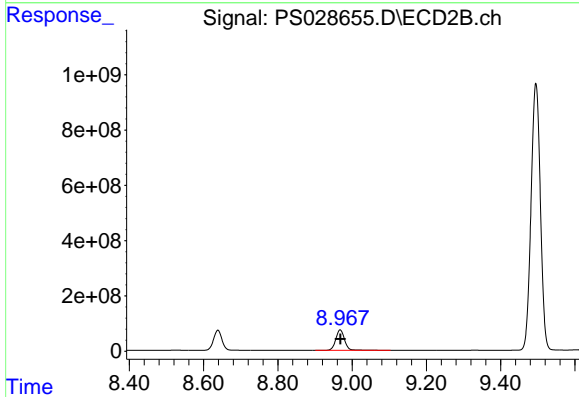
R.T.: 8.638 min  
 Delta R.T.: -0.001 min  
 Response: 1136585327  
 Conc: 710.98 ng/ml



#9 2,4-D

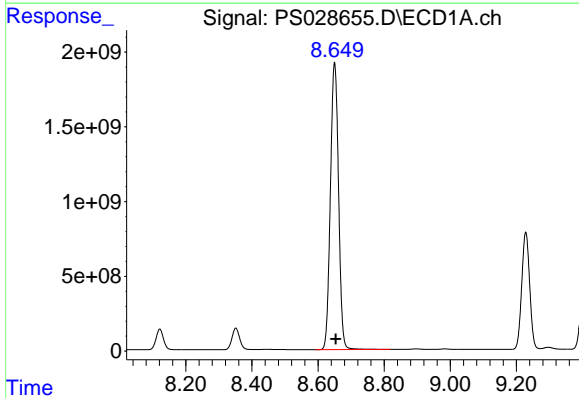
R.T.: 8.351 min  
 Delta R.T.: 0.000 min  
 Response: 2339959240  
 Conc: 693.91 ng/ml

Instrument :  
 ECD\_S  
 ClientSampleId :  
 HSTDCCC750



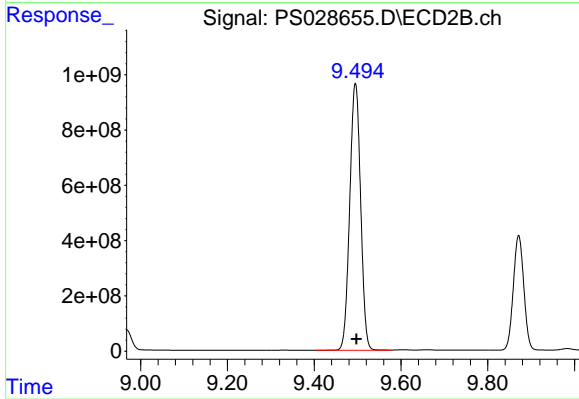
#9 2,4-D

R.T.: 8.968 min  
 Delta R.T.: -0.001 min  
 Response: 1209992769  
 Conc: 715.56 ng/ml



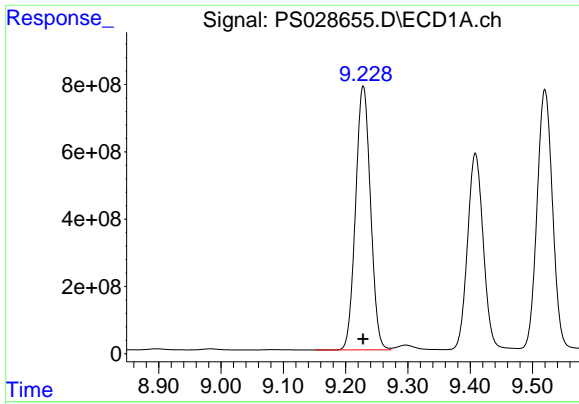
#10 Pentachlorophenol

R.T.: 8.650 min  
 Delta R.T.: -0.004 min  
 Response: 32773036694  
 Conc: 743.28 ng/ml



#10 Pentachlorophenol

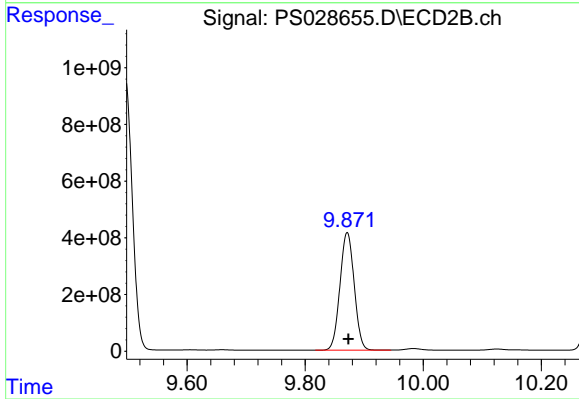
R.T.: 9.495 min  
 Delta R.T.: -0.002 min  
 Response: 16798616518  
 Conc: 733.86 ng/ml



#11 2,4,5-TP (SILVEX)

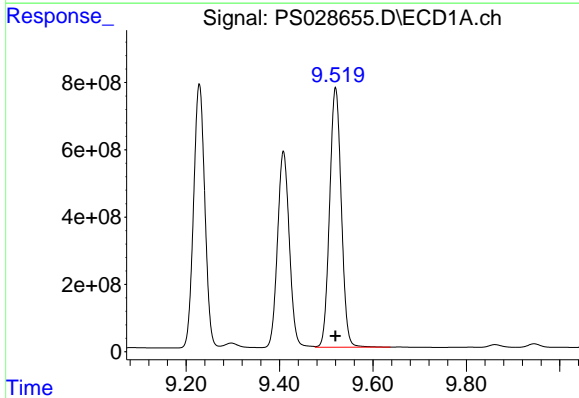
R.T.: 9.228 min  
 Delta R.T.: 0.000 min  
 Response: 13030335449  
 Conc: 712.83 ng/ml

Instrument :  
 ECD\_S  
 ClientSampleId :  
 HSTDCCC750



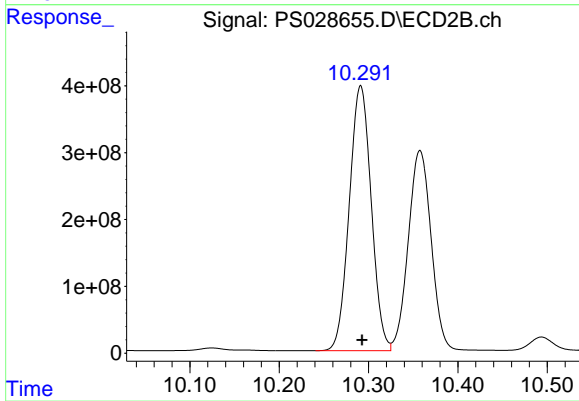
#11 2,4,5-TP (SILVEX)

R.T.: 9.871 min  
 Delta R.T.: -0.002 min  
 Response: 6957586106  
 Conc: 729.11 ng/ml



#12 2,4,5-T

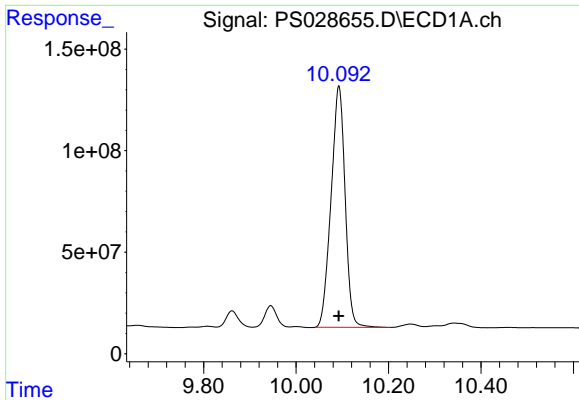
R.T.: 9.520 min  
 Delta R.T.: 0.000 min  
 Response: 13370106086  
 Conc: 712.86 ng/ml



#12 2,4,5-T

R.T.: 10.291 min  
 Delta R.T.: -0.002 min  
 Response: 6770539121  
 Conc: 727.21 ng/ml

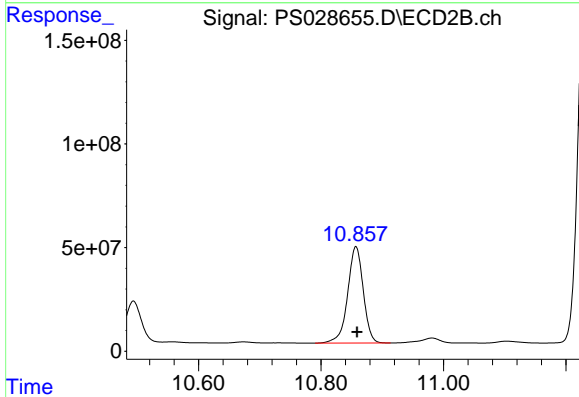




#13 2,4-DB

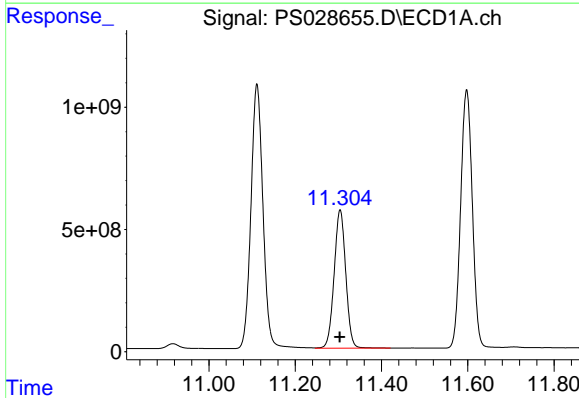
R.T.: 10.093 min  
 Delta R.T.: 0.000 min  
 Response: 2503793613  
 Conc: 706.95 ng/ml

Instrument :  
 ECD\_S  
 ClientSampleId :  
 HSTDCCC750



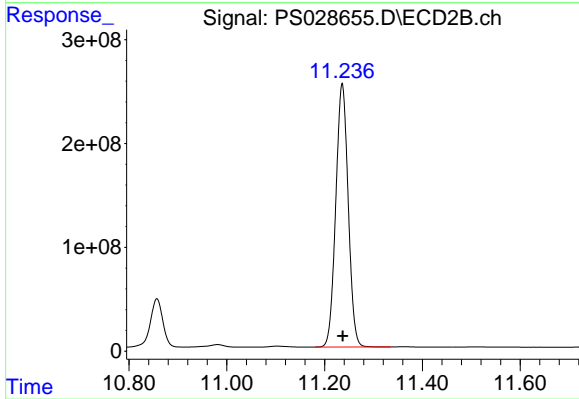
#13 2,4-DB

R.T.: 10.857 min  
 Delta R.T.: -0.002 min  
 Response: 822653506  
 Conc: 717.40 ng/ml



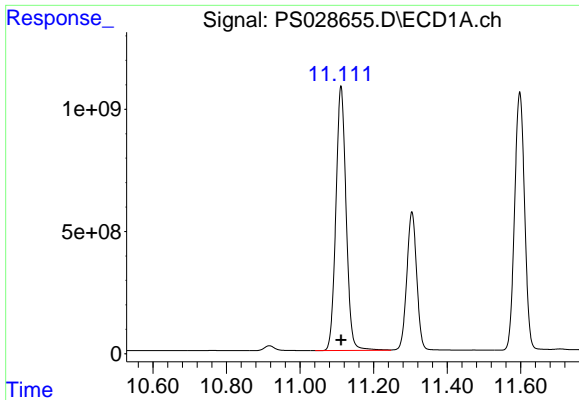
#14 DINOSEB

R.T.: 11.304 min  
 Delta R.T.: 0.000 min  
 Response: 10572993232  
 Conc: 703.64 ng/ml



#14 DINOSEB

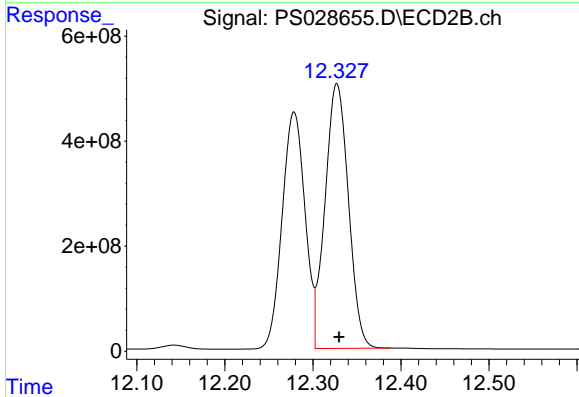
R.T.: 11.236 min  
 Delta R.T.: -0.001 min  
 Response: 4466718812  
 Conc: 711.71 ng/ml



#15 Picloram

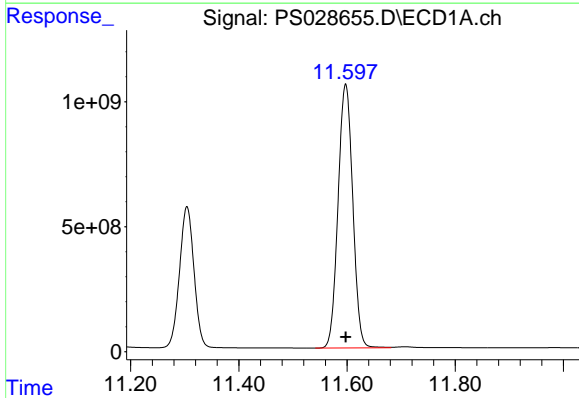
R.T.: 11.111 min  
 Delta R.T.: 0.000 min  
 Response: 20923501615  
 Conc: 703.62 ng/ml

Instrument :  
 ECD\_S  
 ClientSampleId :  
 HSTDCCC750



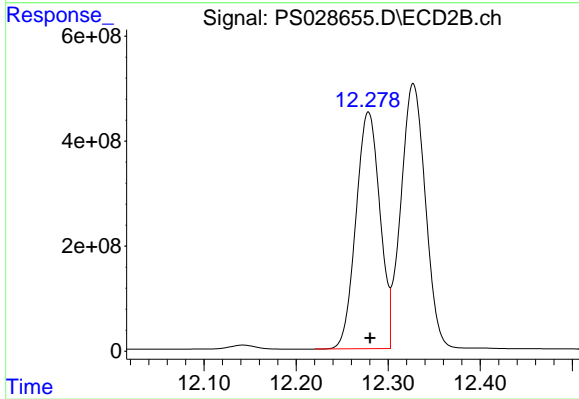
#15 Picloram

R.T.: 12.327 min  
 Delta R.T.: -0.003 min  
 Response: 9299989206  
 Conc: 721.45 ng/ml



#16 DCPA

R.T.: 11.597 min  
 Delta R.T.: 0.000 min  
 Response: 19850695388  
 Conc: 721.97 ng/ml



#16 DCPA

R.T.: 12.279 min  
 Delta R.T.: -0.002 min  
 Response: 8169418826  
 Conc: 736.17 ng/ml