

Data Path : Z:\pestpcbsrv\HPCHEM1\ECD_S\Data\PS112719\
 Data File : PS007866.D
 Signal(s) : Signal #1: ECD1A.ch Signal #2: ECD2B.ch
 Acq On : 27 Nov 2019 16:14
 Operator : SM\AJ
 Sample : K6025-02
 Misc :
 ALS Vial : 8 Sample Multiplier: 1

Instrument :
 ECD_S
 ClientSampleId :

Integration File signal 1: autoint1.e
 Integration File signal 2: autoint2.e
 Quant Time: Nov 27 16:42:44 2019
 Quant Method : Z:\pestpcbsrv\HPCHEM1\ECD_S\Method\PS110619.M
 Quant Title : 8080.M
 QLast Update : Wed Nov 06 02:45:11 2019
 Response via : Initial Calibration
 Integrator: ChemStation

Volume Inj. : 2 µl
 Signal #1 Phase : Rtx-CLPesticides Signal #2 Phase: Rtx-CLPesticides2
 Signal #1 Info : 30M x 0.32mm x0.5 Signal #2 Info : 30M x 0.32mm x 0.25µm

	Compound	RT#1	RT#2	Resp#1	Resp#2	ng/ml	ng/ml

System Monitoring Compounds							
4) S	2,4-DCAA	5.428	5.154	856.1E6	455.7E6	621.641	648.645
Target Compounds							
1) T	Dalapon	1.992	1.699	203.6E6	233.2E6	112.522	196.416 #
2) T	3,5-DICHL...	0.000	4.489	0	73956862	N.D.	81.862
3) T	4-Nitroph...	5.342	4.869	61359355	21868050	96.281	53.143 #
5) T	DICAMBA	5.520	5.292	47551957	20225876	9.347	7.643
6) T	MCPD	0.000	5.292	0	20225876	N.D.	10.411
9) T	2,4-D	6.479	6.058	122.5E6	13985973	87.321	17.344 #
10) T	Pentachlo...	0.000	6.446	0	8530130	N.D.	<MDL
11) T	2,4,5-TP ...	0.000	6.756	0	64554293	N.D.	16.485
14) T	DINOSEB	0.000	7.943	0	10862145	N.D.	3.736
15) T	Picloram	8.899	0.000	48391496	0	4.358	N.D. #

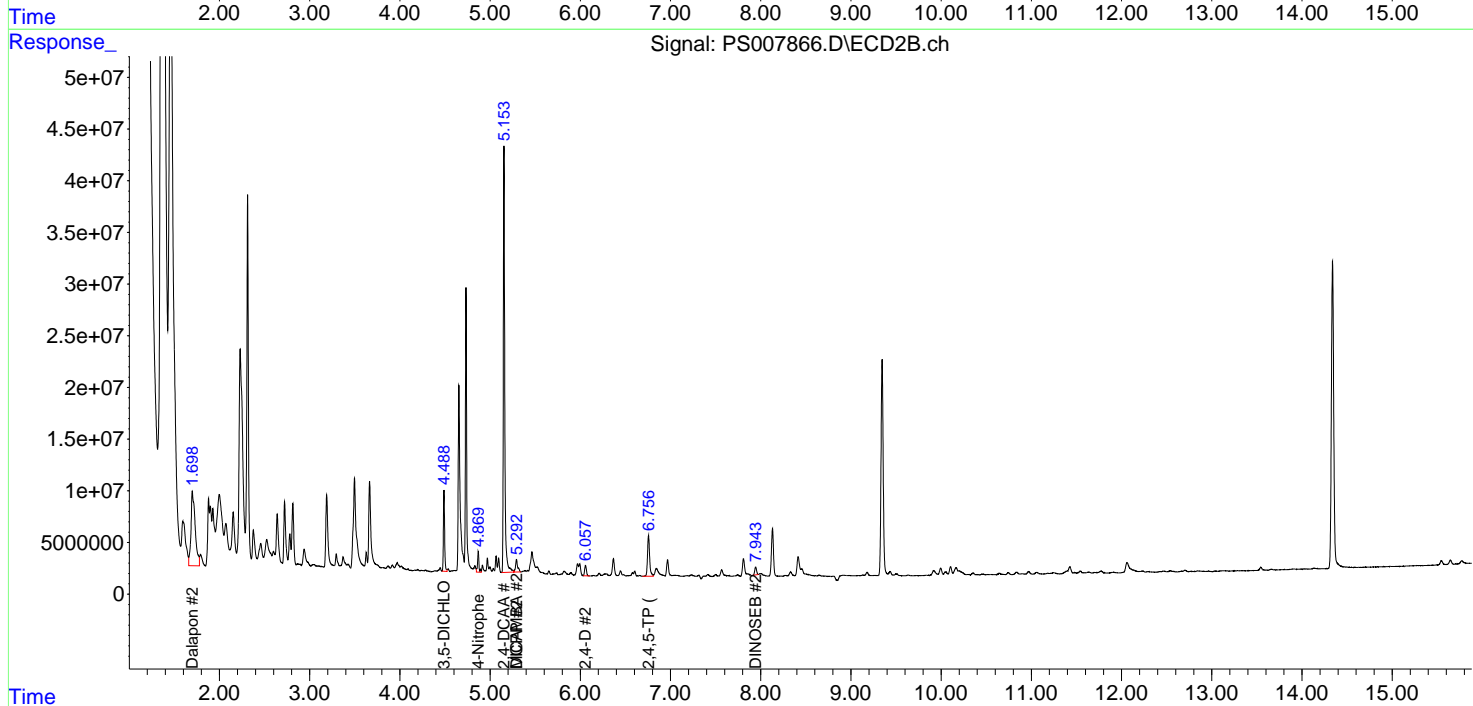
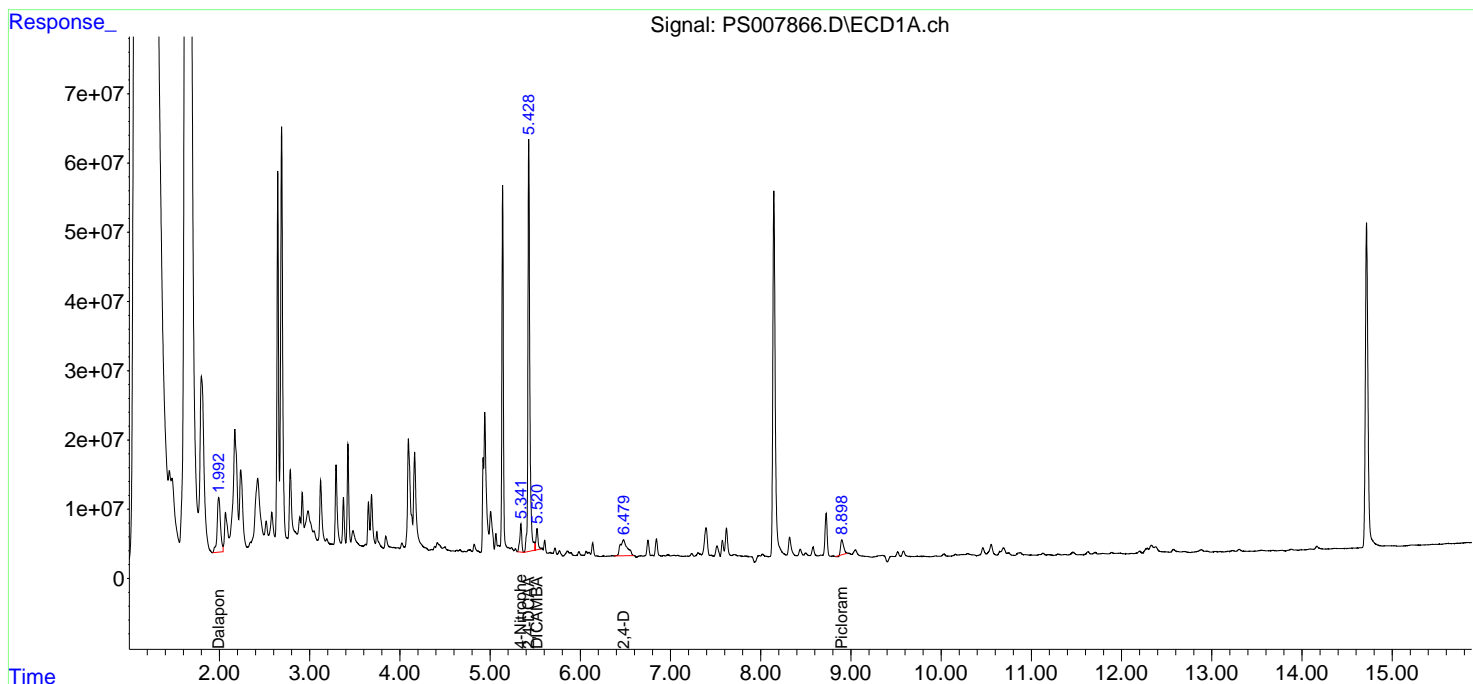
(f)=RT Delta > 1/2 Window (#)=Amounts differ by > 25% (m)=manual int.

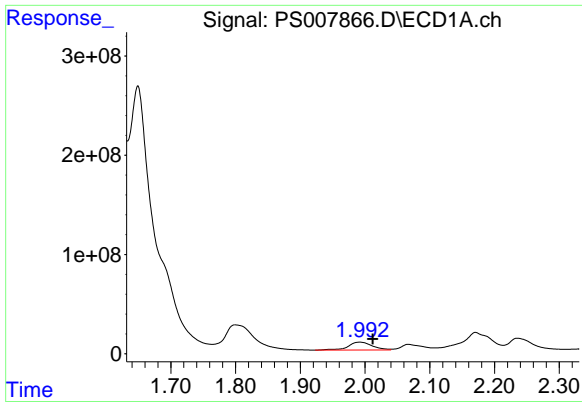
Data Path : Z:\pestpcbsrv\HPCHEM1\ECD_S\Data\PS112719\
 Data File : PS007866.D
 Signal(s) : Signal #1: ECD1A.ch Signal #2: ECD2B.ch
 Acq On : 27 Nov 2019 16:14
 Operator : SM\AJ
 Sample : K6025-02
 Misc :
 ALS Vial : 8 Sample Multiplier: 1

Instrument :
 ECD_S
 ClientSampled :

Integration File signal 1: autoint1.e
 Integration File signal 2: autoint2.e
 Quant Time: Nov 27 16:42:44 2019
 Quant Method : Z:\pestpcbsrv\HPCHEM1\ECD_S\Method\PS110619.M
 Quant Title : 8080.M
 QLast Update : Wed Nov 06 02:45:11 2019
 Response via : Initial Calibration
 Integrator: ChemStation

Volume Inj. : 2 µl
 Signal #1 Phase : Rtx-CLPesticides Signal #2 Phase: Rtx-CLPesticides2
 Signal #1 Info : 30M x 0.32mm x0.5 Signal #2 Info : 30M x 0.32mm x 0.25µm

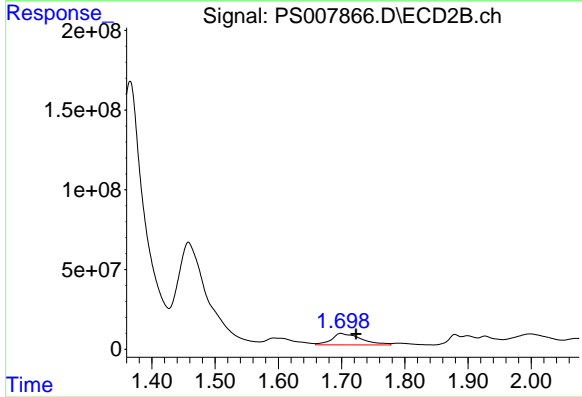




#1 Dalapon

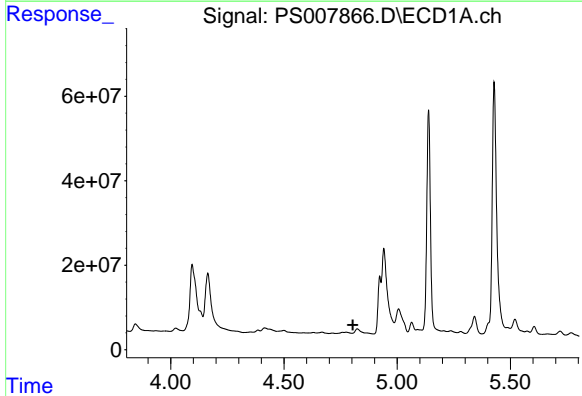
R.T.: 1.992 min
 Delta R.T.: -0.020 min
 Response: 203572333
 Conc: 112.52 ng/ml

Instrument :
 ECD_S
 ClientSampleId :



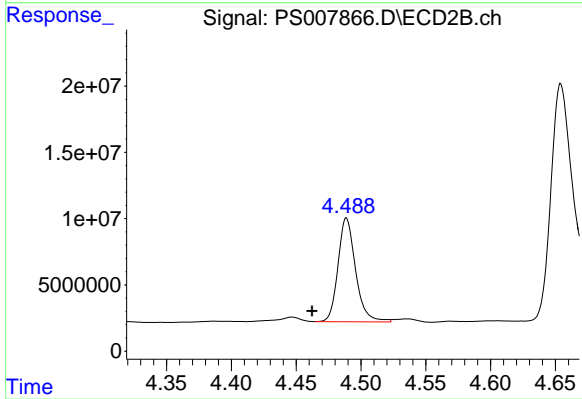
#1 Dalapon

R.T.: 1.699 min
 Delta R.T.: -0.024 min
 Response: 233224987
 Conc: 196.42 ng/ml



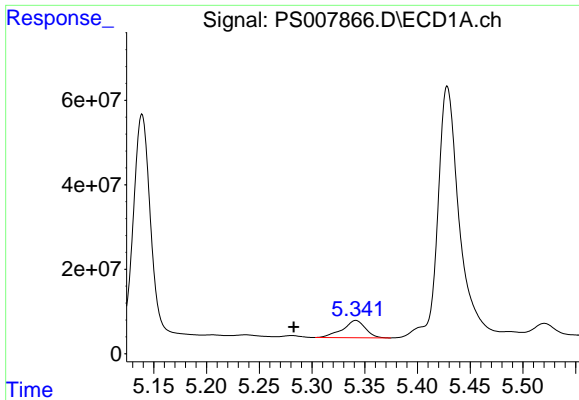
#2 3,5-DICHLOROBENZOIC ACID

R.T.: 0.000 min
 Exp R.T. : 4.804 min
 Response: 0
 Conc: N.D.



#2 3,5-DICHLOROBENZOIC ACID

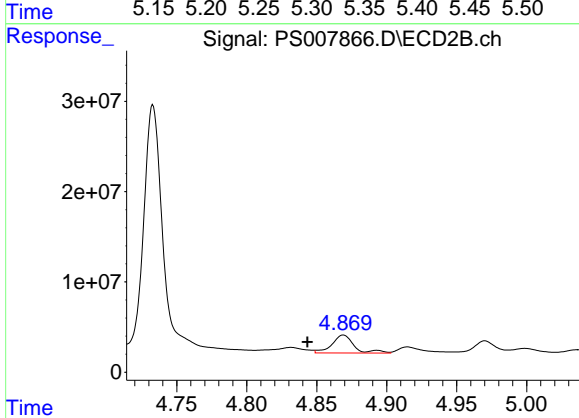
R.T.: 4.489 min
 Delta R.T.: 0.027 min
 Response: 73956862
 Conc: 81.86 ng/ml



#3 4-Nitrophenol

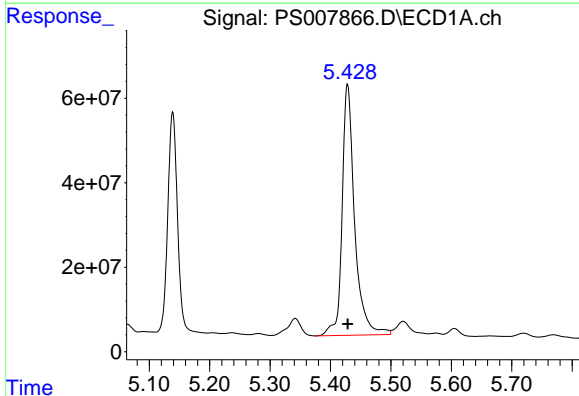
R.T.: 5.342 min
 Delta R.T.: 0.059 min
 Response: 61359355
 Conc: 96.28 ng/ml

Instrument :
 ECD_S
 ClientSampleId :



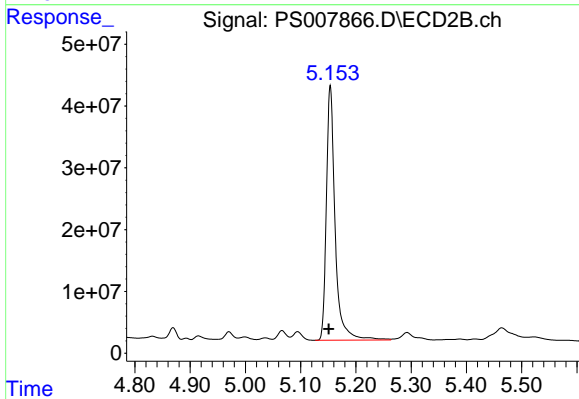
#3 4-Nitrophenol

R.T.: 4.869 min
 Delta R.T.: 0.026 min
 Response: 21868050
 Conc: 53.14 ng/ml



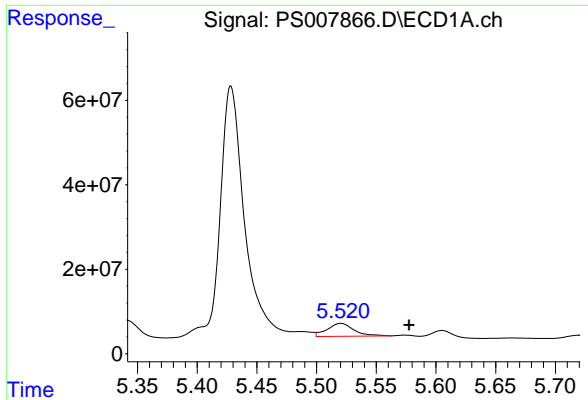
#4 2,4-DCAA

R.T.: 5.428 min
 Delta R.T.: 0.000 min
 Response: 856114284
 Conc: 621.64 ng/ml



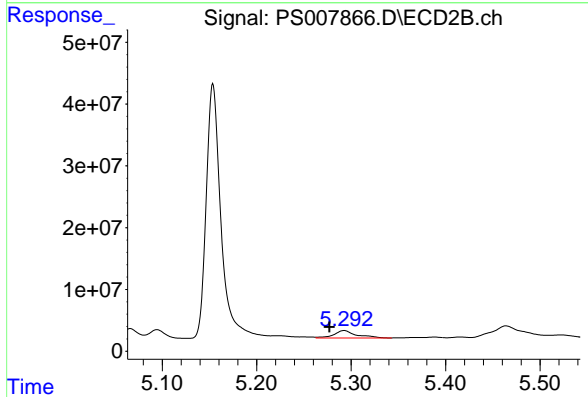
#4 2,4-DCAA

R.T.: 5.154 min
 Delta R.T.: 0.003 min
 Response: 455715037
 Conc: 648.65 ng/ml

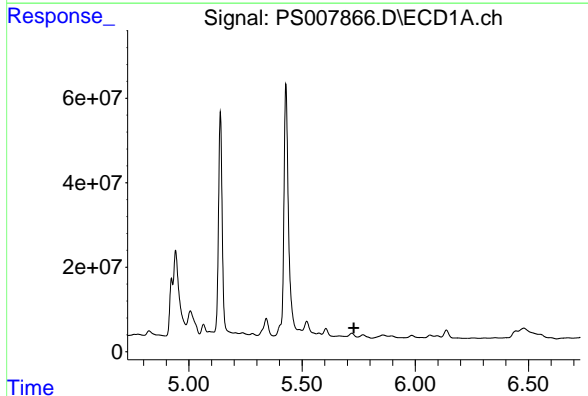


#5 DICAMBA
 R.T.: 5.520 min
 Delta R.T.: -0.057 min
 Response: 47551957
 Conc: 9.35 ng/ml

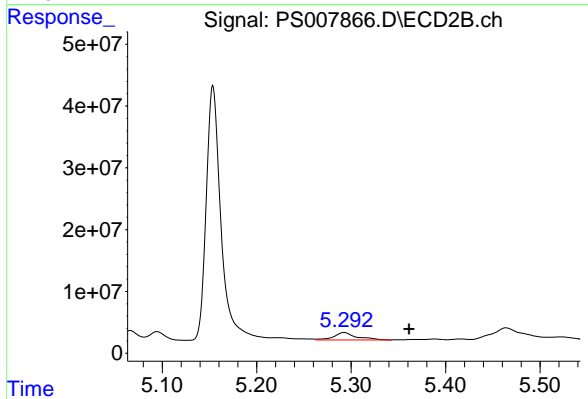
Instrument :
 ECD_S
 ClientSampled :



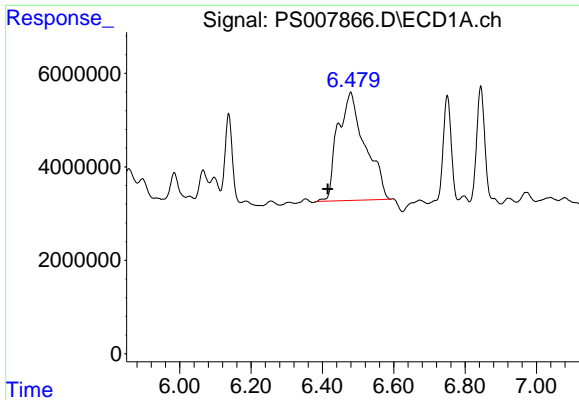
#5 DICAMBA
 R.T.: 5.292 min
 Delta R.T.: 0.015 min
 Response: 20225876
 Conc: 7.64 ng/ml



#6 MCPP
 R.T.: 0.000 min
 Exp R.T. : 5.729 min
 Response: 0
 Conc: N.D.

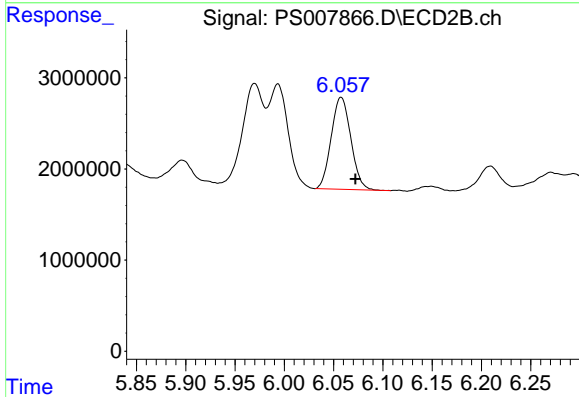


#6 MCPP
 R.T.: 5.292 min
 Delta R.T.: -0.069 min
 Response: 20225876
 Conc: 10.41 ug/ml

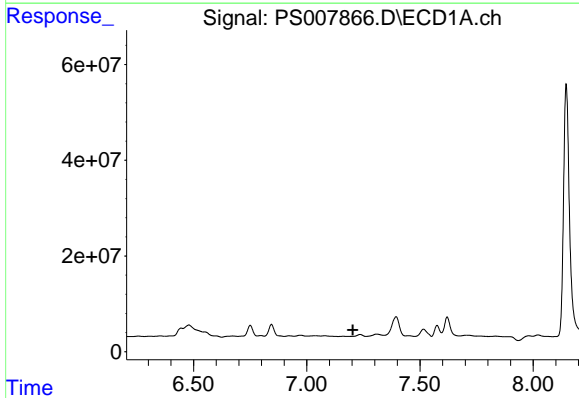


#9 2,4-D
 R.T.: 6.479 min
 Delta R.T.: 0.065 min
 Response: 122471493
 Conc: 87.32 ng/ml

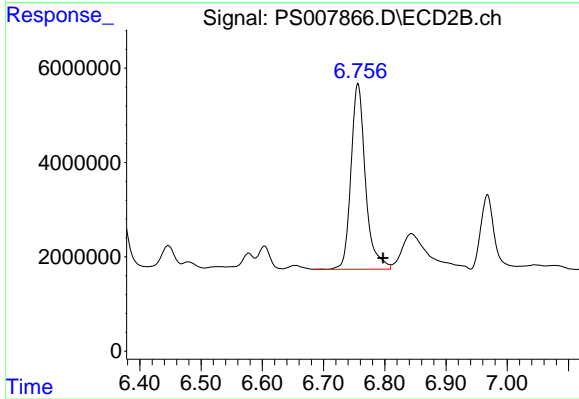
Instrument :
 ECD_S
 ClientSampleId :



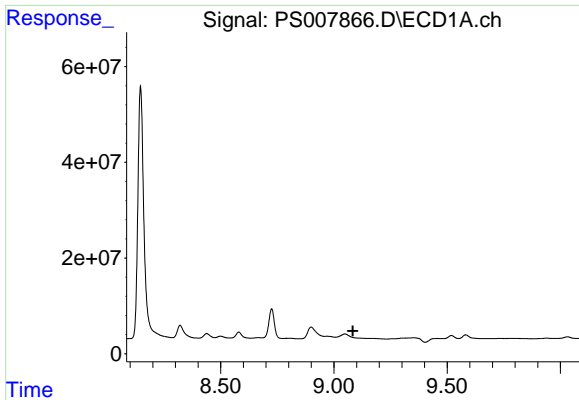
#9 2,4-D
 R.T.: 6.058 min
 Delta R.T.: -0.014 min
 Response: 13985973
 Conc: 17.34 ng/ml



#11 2,4,5-TP (SILVEX)
 R.T.: 0.000 min
 Exp R.T. : 7.203 min
 Response: 0
 Conc: N.D.



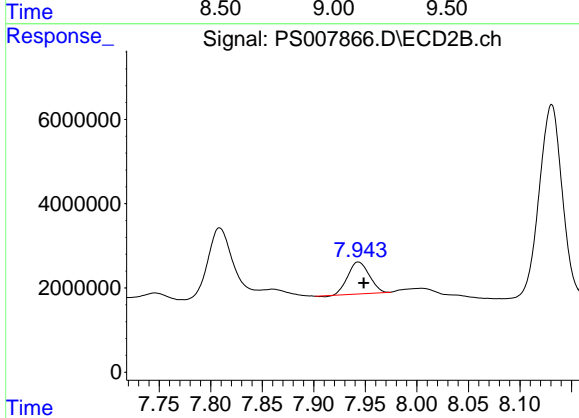
#11 2,4,5-TP (SILVEX)
 R.T.: 6.756 min
 Delta R.T.: -0.041 min
 Response: 64554293
 Conc: 16.49 ng/ml



#14 DINOSEB

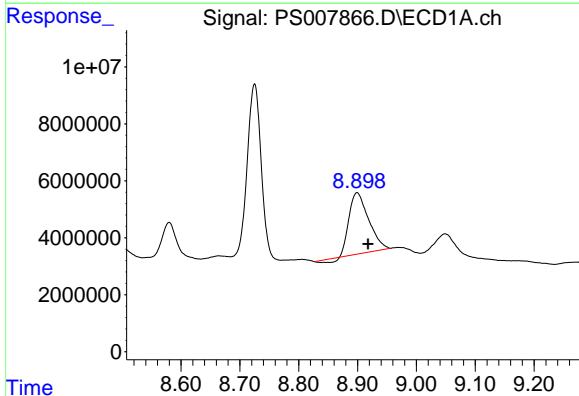
R.T.: 0.000 min
 Exp R.T.: 9.083 min
 Response: 0
 Conc: N.D.

Instrument :
 ECD_S
 ClientSampled :



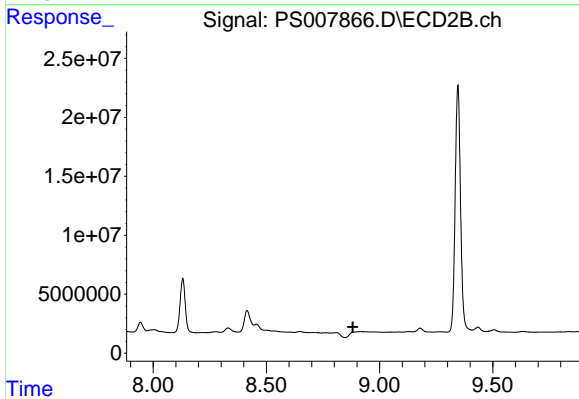
#14 DINOSEB

R.T.: 7.943 min
 Delta R.T.: -0.005 min
 Response: 10862145
 Conc: 3.74 ng/ml



#15 Picloram

R.T.: 8.899 min
 Delta R.T.: -0.019 min
 Response: 48391496
 Conc: 4.36 ng/ml



#15 Picloram

R.T.: 0.000 min
 Exp R.T.: 8.882 min
 Response: 0
 Conc: N.D.