

Data Path : Z:\pestpcbsrv\HPCHEM1\ECD\_S\Data\PS112719\  
 Data File : PS007872.D  
 Signal(s) : Signal #1: ECD1A.ch Signal #2: ECD2B.ch  
 Acq On : 27 Nov 2019 18:26  
 Operator : SM\AJ  
 Sample : K5675-11  
 Misc :  
 ALS Vial : 12 Sample Multiplier: 1

Instrument :  
 ECD\_S  
 ClientSampleId :  
 TR-05-112619

Integration File signal 1: autoint1.e  
 Integration File signal 2: autoint2.e  
 Quant Time: Nov 28 02:47:45 2019  
 Quant Method : Z:\pestpcbsrv\HPCHEM1\ECD\_S\Method\PS110619.M  
 Quant Title : 8080.M  
 QLast Update : Wed Nov 06 02:45:11 2019  
 Response via : Initial Calibration  
 Integrator: ChemStation

Volume Inj. : 2 µl  
 Signal #1 Phase : Rtx-CLPesticides Signal #2 Phase: Rtx-CLPesticides2  
 Signal #1 Info : 30M x 0.32mm x0.5 Signal #2 Info : 30M x 0.32mm x 0.25µm

Compound	RT#1	RT#2	Resp#1	Resp#2	ng/ml	ng/ml
-----						
System Monitoring Compounds						
4) S 2,4-DCAA	5.410	0.000	753.9E6	0	547.433	N.D. #
Target Compounds						
1) T Dalapon	2.050	1.681	146.0E6	340.2E6	80.715	286.468 #
2) T 3,5-DICHL...	0.000	4.470	0	53298588	N.D.	58.996
6) T MCPP	0.000	5.430	0	6350567	N.D.	3.269
8) T DICHLORPROP	0.000	5.796	0	15991840	N.D.	24.385
9) T 2,4-D	6.462	0.000	72250820	0	51.514	N.D. #
11) T 2,4,5-TP ...	0.000	6.829	0	30738037	N.D.	7.850
12) T 2,4,5-T	7.498	0.000	48914925	0	5.975	N.D. #
15) T Picloram	8.873	0.000	135.7E6	0	12.224	N.D. #
-----						

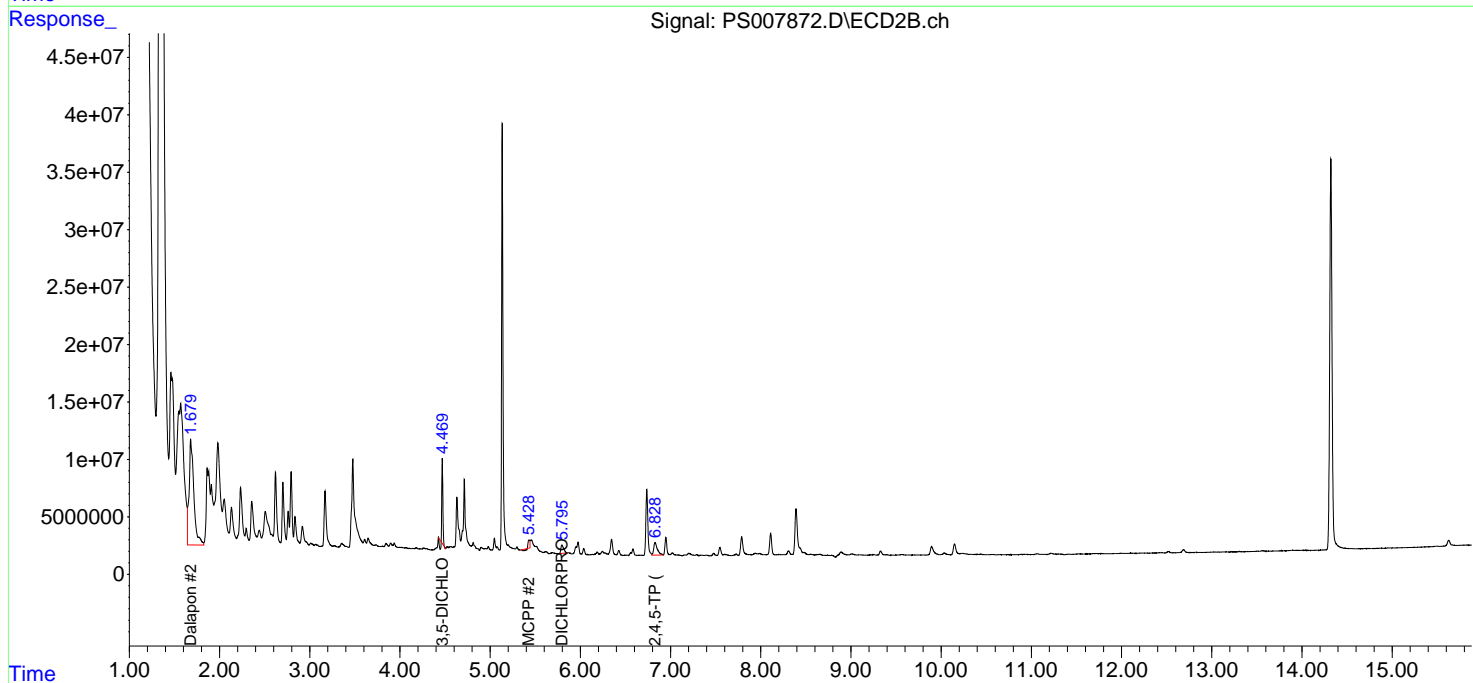
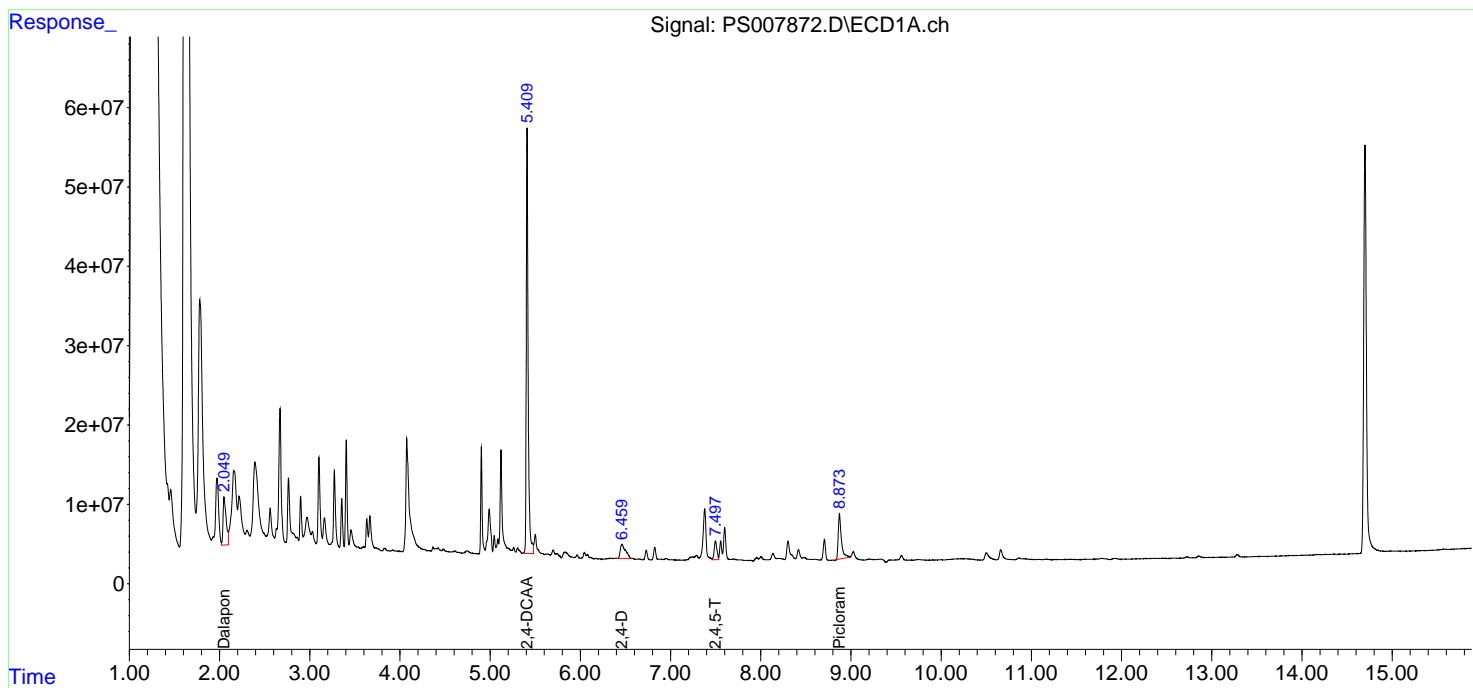
(f)=RT Delta > 1/2 Window (#)=Amounts differ by > 25% (m)=manual int.

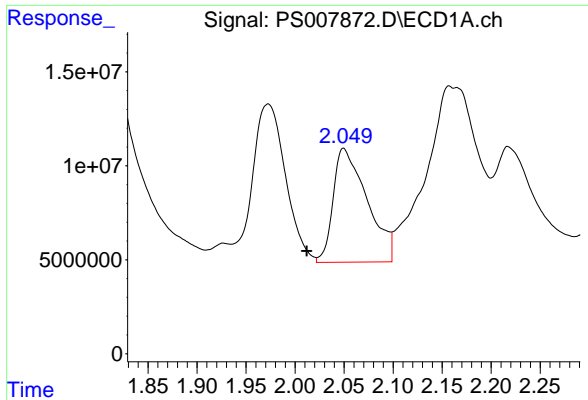
Data Path : Z:\pestpcbsrv\HPCHEM1\ECD\_S\Data\PS112719\  
 Data File : PS007872.D  
 Signal(s) : Signal #1: ECD1A.ch Signal #2: ECD2B.ch  
 Acq On : 27 Nov 2019 18:26  
 Operator : SM\AJ  
 Sample : K5675-11  
 Misc :  
 ALS Vial : 12 Sample Multiplier: 1

Instrument :  
 ECD\_S  
 ClientSampled :  
 TR-05-112619

Integration File signal 1: autoint1.e  
 Integration File signal 2: autoint2.e  
 Quant Time: Nov 28 02:47:45 2019  
 Quant Method : Z:\pestpcbsrv\HPCHEM1\ECD\_S\Method\PS110619.M  
 Quant Title : 8080.M  
 QLast Update : Wed Nov 06 02:45:11 2019  
 Response via : Initial Calibration  
 Integrator: ChemStation

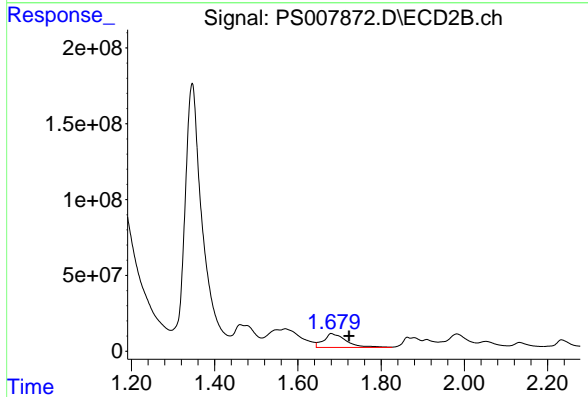
Volume Inj. : 2 µl  
 Signal #1 Phase : Rtx-CLPesticides Signal #2 Phase: Rtx-CLPesticides2  
 Signal #1 Info : 30M x 0.32mm x0.5 Signal #2 Info : 30M x 0.32mm x 0.25µm



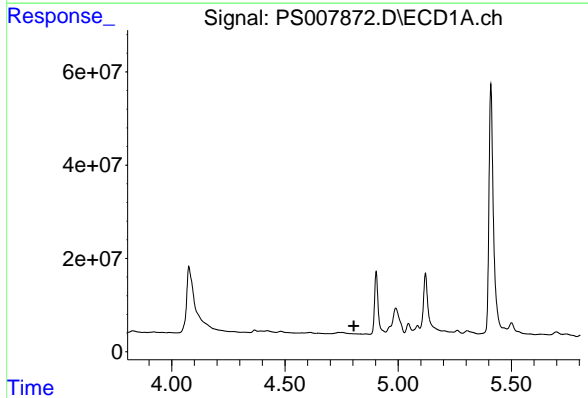


#1 Dalapon  
 R.T.: 2.050 min  
 Delta R.T.: 0.038 min  
 Response: 146028809  
 Conc: 80.72 ng/ml

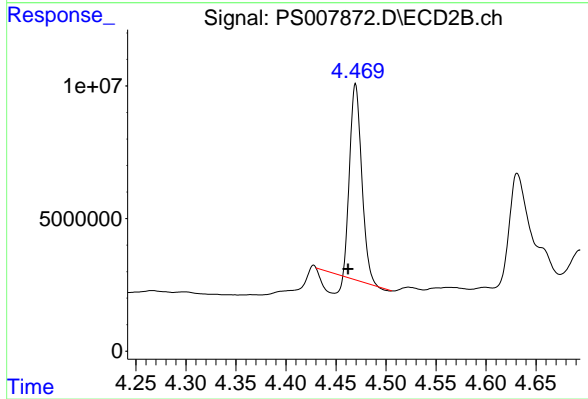
Instrument :  
 ECD\_S  
 ClientSampleId :  
 TR-05-112619



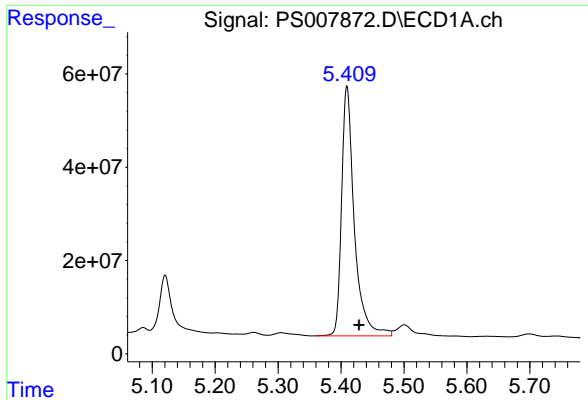
#1 Dalapon  
 R.T.: 1.681 min  
 Delta R.T.: -0.043 min  
 Response: 340152916  
 Conc: 286.47 ng/ml



#2 3,5-DICHLOROBENZOIC ACID  
 R.T.: 0.000 min  
 Exp R.T. : 4.804 min  
 Response: 0  
 Conc: N.D.



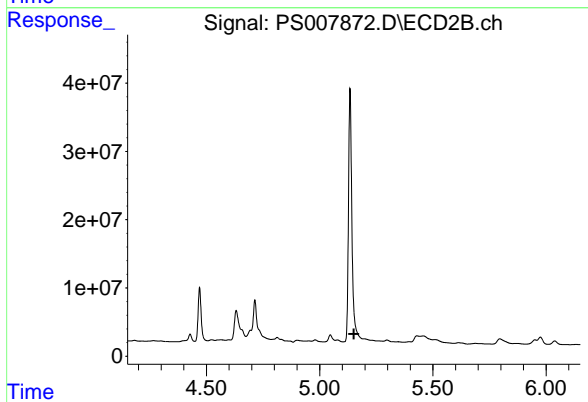
#2 3,5-DICHLOROBENZOIC ACID  
 R.T.: 4.470 min  
 Delta R.T.: 0.008 min  
 Response: 53298588  
 Conc: 59.00 ng/ml



#4 2,4-DCAA

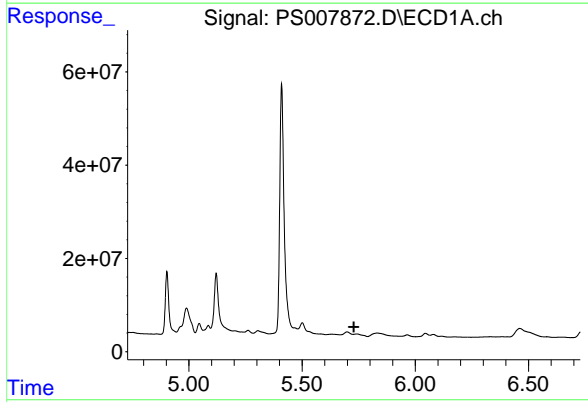
R.T.: 5.410 min  
 Delta R.T.: -0.019 min  
 Response: 753916072  
 Conc: 547.43 ng/ml

Instrument :  
 ECD\_S  
 ClientSampleId :  
 TR-05-112619



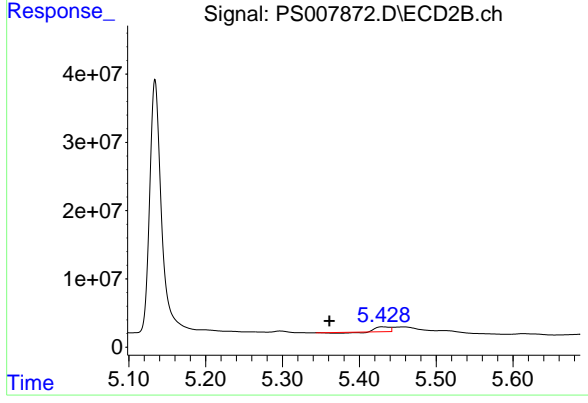
#4 2,4-DCAA

R.T.: 0.000 min  
 Exp R.T. : 5.151 min  
 Response: 0  
 Conc: N.D.



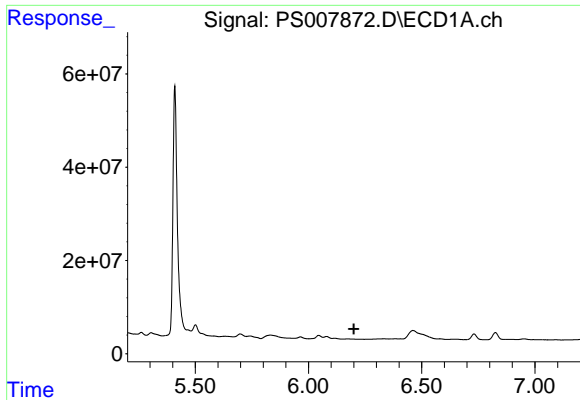
#6 MCP

R.T.: 0.000 min  
 Exp R.T. : 5.729 min  
 Response: 0  
 Conc: N.D.



#6 MCP

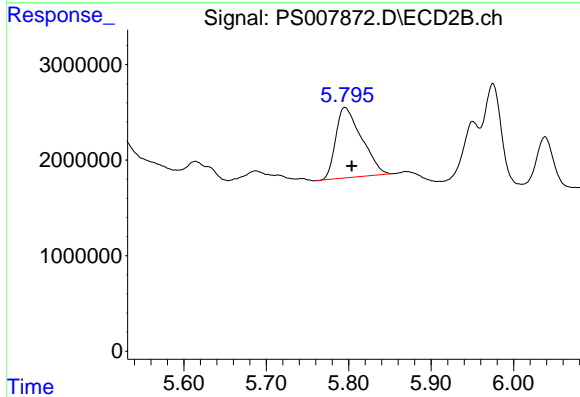
R.T.: 5.430 min  
 Delta R.T.: 0.069 min  
 Response: 6350567  
 Conc: 3.27 ug/ml



#8 DICHLORPROP

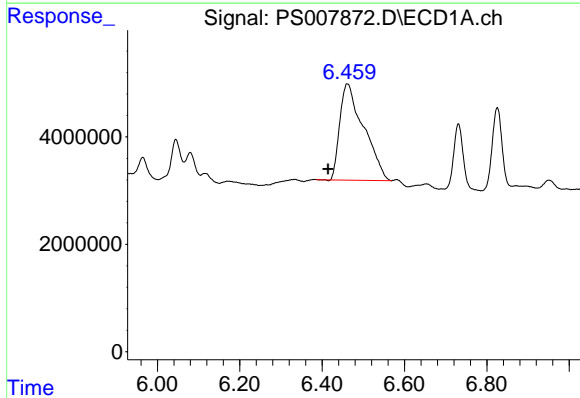
R.T.: 0.000 min  
 Exp R.T.: 6.200 min  
 Response: 0  
 Conc: N.D.

Instrument :  
 ECD\_S  
 ClientSampleId :  
 TR-05-112619



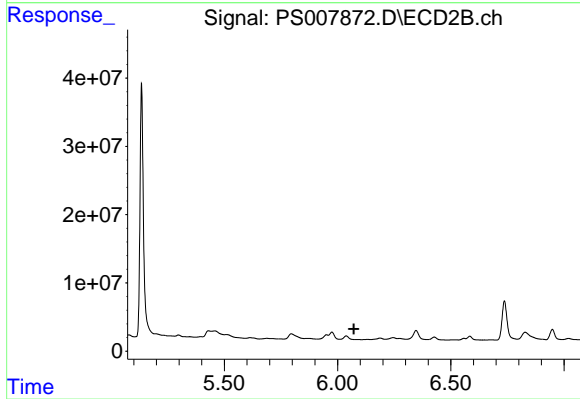
#8 DICHLORPROP

R.T.: 5.796 min  
 Delta R.T.: -0.008 min  
 Response: 15991840  
 Conc: 24.39 ng/ml



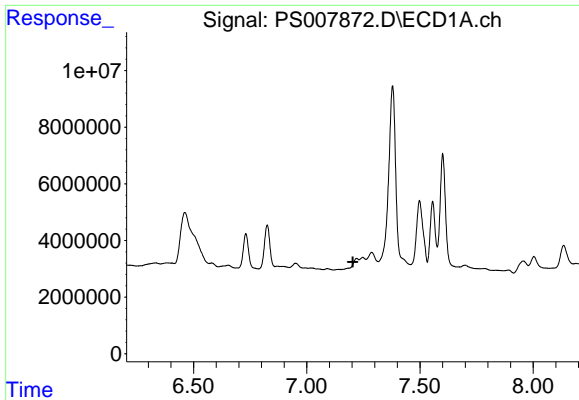
#9 2,4-D

R.T.: 6.462 min  
 Delta R.T.: 0.047 min  
 Response: 72250820  
 Conc: 51.51 ng/ml



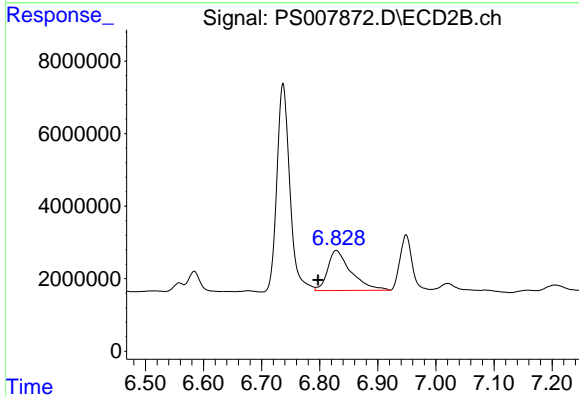
#9 2,4-D

R.T.: 0.000 min  
 Exp R.T.: 6.072 min  
 Response: 0  
 Conc: N.D.

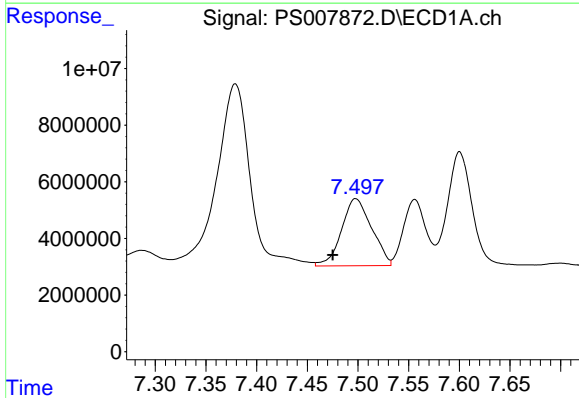


#11 2,4,5-TP (SILVEX)  
 R.T.: 0.000 min  
 Exp R.T.: 7.203 min  
 Response: 0  
 Conc: N.D.

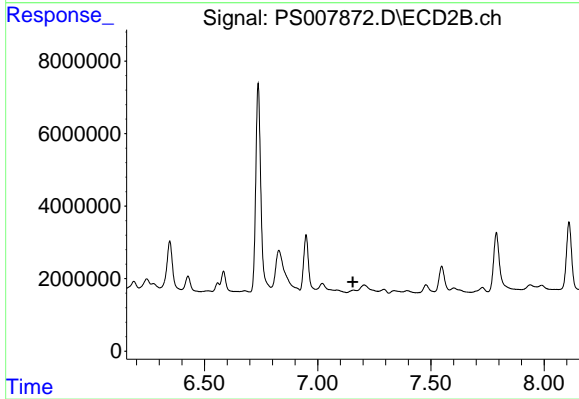
Instrument :  
 ECD\_S  
 ClientSampleId :  
 TR-05-112619



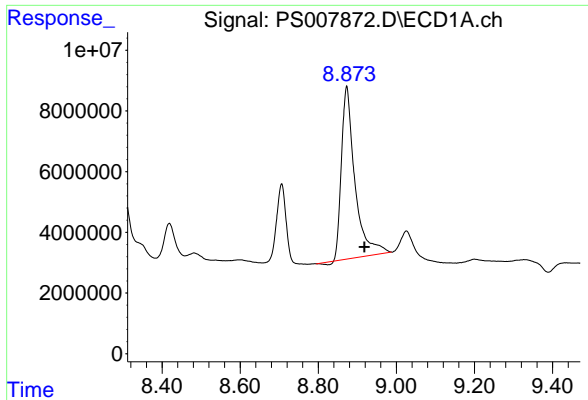
#11 2,4,5-TP (SILVEX)  
 R.T.: 6.829 min  
 Delta R.T.: 0.032 min  
 Response: 30738037  
 Conc: 7.85 ng/ml



#12 2,4,5-T  
 R.T.: 7.498 min  
 Delta R.T.: 0.023 min  
 Response: 48914925  
 Conc: 5.98 ng/ml



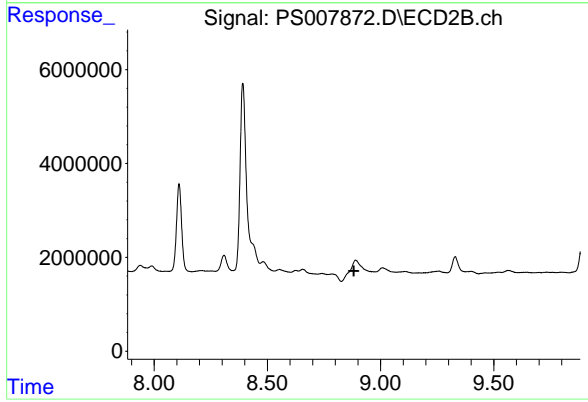
#12 2,4,5-T  
 R.T.: 0.000 min  
 Exp R.T.: 7.156 min  
 Response: 0  
 Conc: N.D.



#15 Picloram

R.T.: 8.873 min  
Delta R.T.: -0.045 min  
Response: 135730313  
Conc: 12.22 ng/ml

Instrument :  
ECD\_S  
ClientSampled :  
TR-05-112619



#15 Picloram

R.T.: 0.000 min  
Exp R.T. : 8.882 min  
Response: 0  
Conc: N.D.