

Data Path : Z:\pestpcbsrv\HPCHEM1\ECD\_S\Data\PS112723\  
 Data File : PS024962.D  
 Signal(s) : Signal #1: ECD1A.ch Signal #2: ECD2B.ch  
 Acq On : 27 Nov 2023 20:41  
 Operator : AR\AJ  
 Sample : I.BLK  
 Misc :  
 ALS Vial : 2 Sample Multiplier: 1

Instrument :  
 ECD\_S  
 ClientSampleId :

Integration File signal 1: autoint1.e  
 Integration File signal 2: autoint2.e  
 Quant Time: Nov 27 23:48:47 2023  
 Quant Method : Z:\pestpcbsrv\HPCHEM1\ECD\_S\Method\PS110323.M  
 Quant Title : 8080.M  
 QLast Update : Fri Nov 03 15:07:01 2023  
 Response via : Initial Calibration  
 Integrator: ChemStation

Volume Inj. : 2 µl  
 Signal #1 Phase : Rtx-CLPesticides Signal #2 Phase: Rtx-CLPesticides2  
 Signal #1 Info : 30M x 0.32mm x0.5 Signal #2 Info : 30M x 0.32mm x 0.25µm

Compound	RT#1	RT#2	Resp#1	Resp#2	ng/ml	ng/ml
-----						
System Monitoring Compounds						
4) S 2,4-DCAA	6.355	6.771	1196.6E6	387.5E6	586.139	574.346
Target Compounds						
1) T Dalapon	0.000	2.563	0	3618867	N.D.	3.435
3) T 4-Nitroph...	0.000	6.369	0	367966	N.D.	<MDL
5) T DICAMBA	0.000	6.870f	0	9882	N.D.	<MDL
6) T MCPP	6.679	7.078f	2472056	4505171	<MDL	2.322 #
8) T DICHLORPROP	0.000	7.559	0	3754989	N.D.	5.140
9) T 2,4-D	0.000	7.767f	0	692691	N.D.	<MDL
10) T Pentachlo...	0.000	8.300f	0	2430955	N.D.	<MDL
11) T 2,4,5-TP ...	8.036	8.619	10478744	364369	<MDL	<MDL #
12) T 2,4,5-T	8.294	8.980	48408214	877743	3.702	<MDL #
13) T 2,4-DB	0.000	9.490	0	1021435	N.D.	2.095
15) T Picloram	9.677	10.764	19857374	7031614	1.116	1.157
16) T DCPA	10.128	10.764	42460625	7031614	2.481	1.399 #

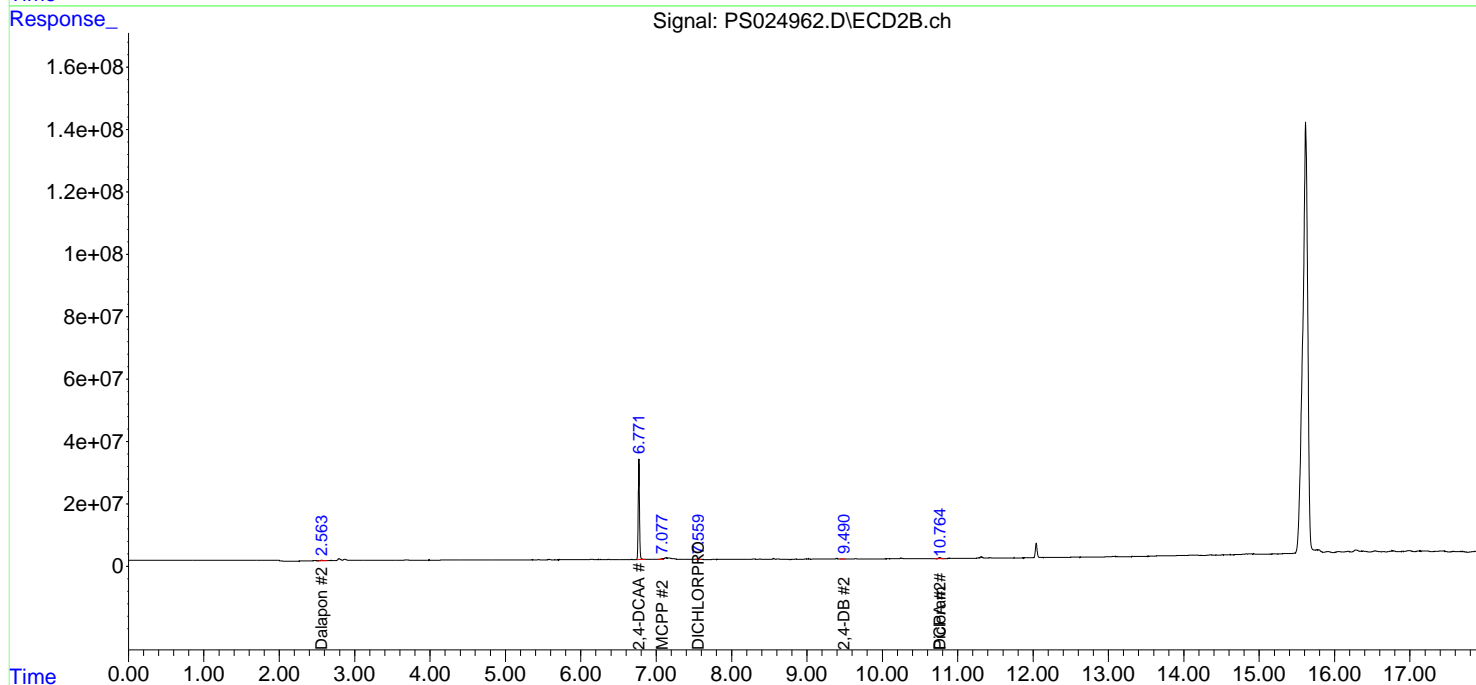
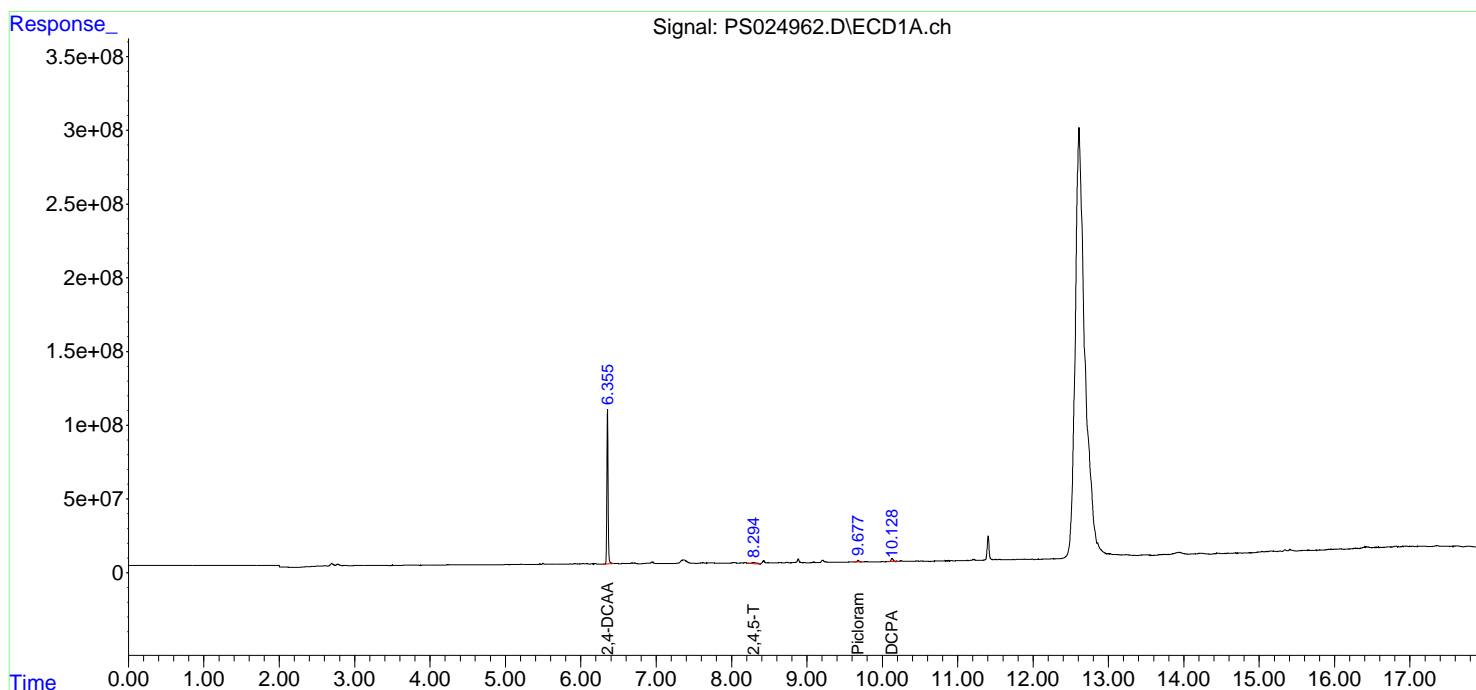
(f)=RT Delta > 1/2 Window (#)=Amounts differ by > 25% (m)=manual int.

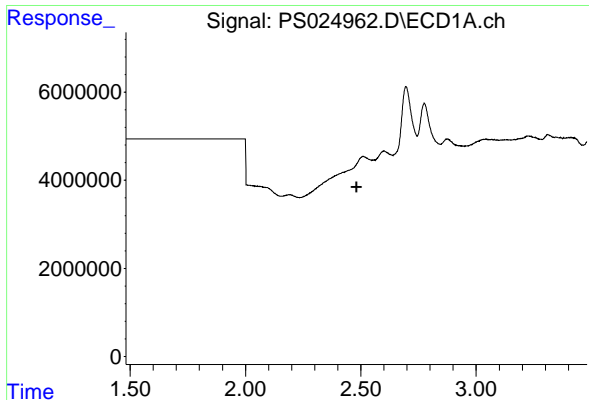
Data Path : Z:\pestpcbsrv\HPCHEM1\ECD\_S\Data\PS112723\  
 Data File : PS024962.D  
 Signal(s) : Signal #1: ECD1A.ch Signal #2: ECD2B.ch  
 Acq On : 27 Nov 2023 20:41  
 Operator : AR\AJ  
 Sample : I.BLK  
 Misc :  
 ALS Vial : 2 Sample Multiplier: 1

Instrument :  
 ECD\_S  
 ClientSampleId :

Integration File signal 1: autoint1.e  
 Integration File signal 2: autoint2.e  
 Quant Time: Nov 27 23:48:47 2023  
 Quant Method : Z:\pestpcbsrv\HPCHEM1\ECD\_S\Method\PS110323.M  
 Quant Title : 8080.M  
 QLast Update : Fri Nov 03 15:07:01 2023  
 Response via : Initial Calibration  
 Integrator: ChemStation

Volume Inj. : 2 µl  
 Signal #1 Phase : Rtx-CLPesticides Signal #2 Phase: Rtx-CLPesticides2  
 Signal #1 Info : 30M x 0.32mm x0.5 Signal #2 Info : 30M x 0.32mm x 0.25µm

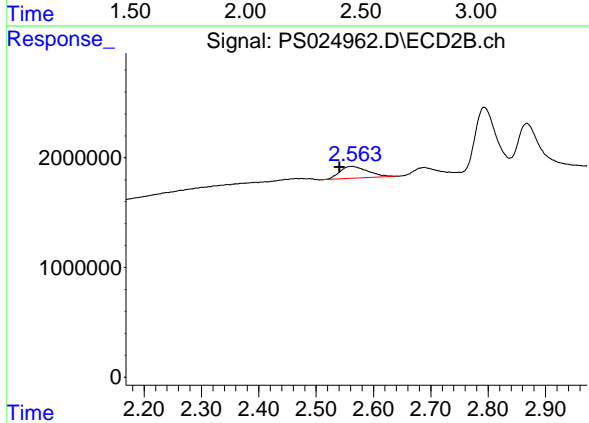




#1 Dalapon

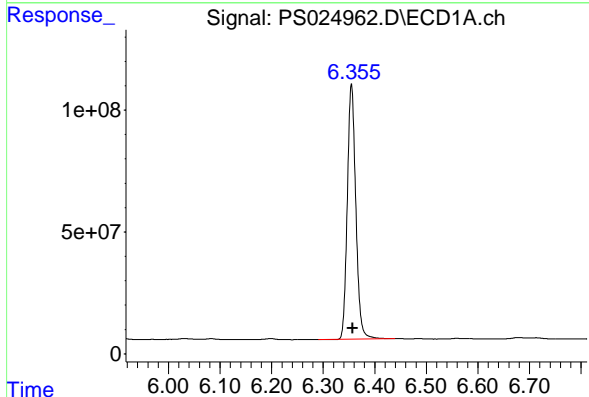
R.T.: 0.000 min  
 Exp R.T.: 2.481 min  
 Response: 0  
 Conc: N.D.

Instrument : ECD\_S  
 ClientSampleId :



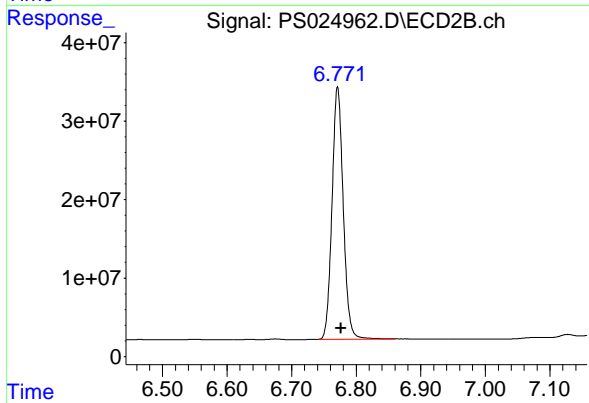
#1 Dalapon

R.T.: 2.563 min  
 Delta R.T.: 0.022 min  
 Response: 3618867  
 Conc: 3.43 ng/ml



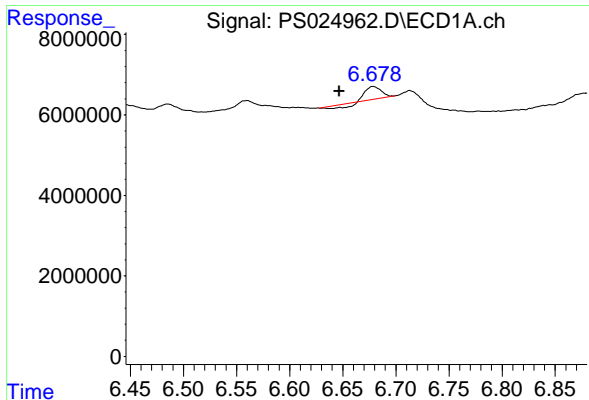
#4 2,4-DCAA

R.T.: 6.355 min  
 Delta R.T.: -0.002 min  
 Response: 1196605123  
 Conc: 586.14 ng/ml



#4 2,4-DCAA

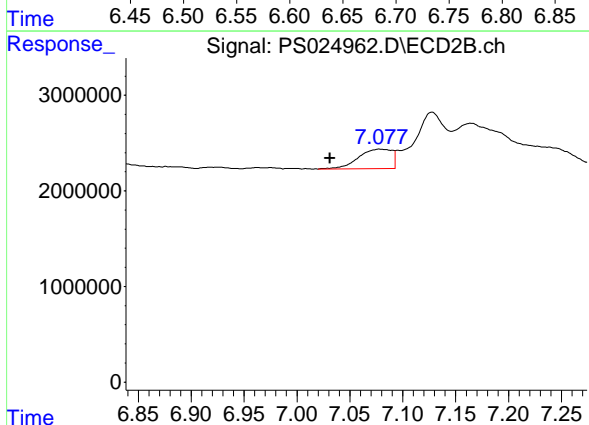
R.T.: 6.771 min  
 Delta R.T.: -0.006 min  
 Response: 387452956  
 Conc: 574.35 ng/ml



#6 MCPP

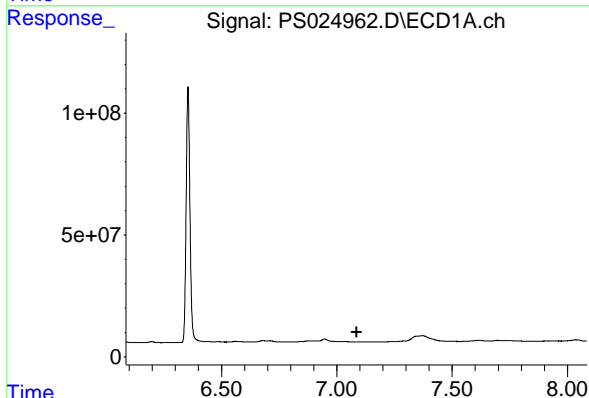
R.T.: 6.679 min  
 Delta R.T.: 0.032 min  
 Response: 2472056  
 Conc: N.D.

Instrument :  
 ECD\_S  
 ClientSampleId :



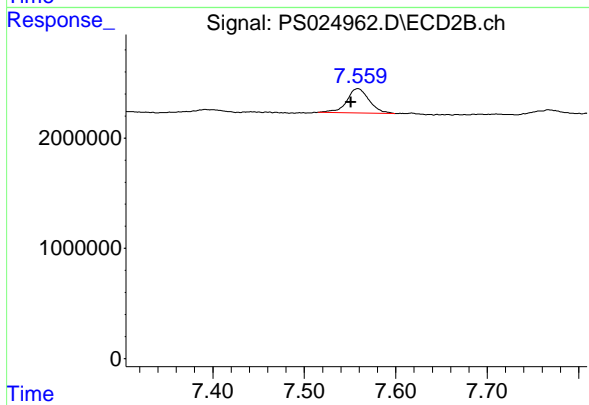
#6 MCPP

R.T.: 7.078 min  
 Delta R.T.: 0.047 min  
 Response: 4505171  
 Conc: 2.32 ug/ml



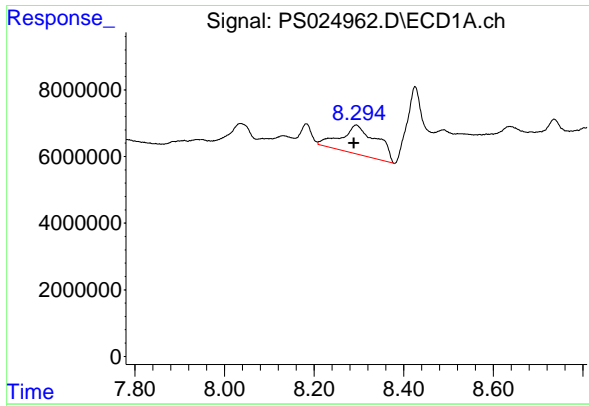
#8 DICHLORPROP

R.T.: 0.000 min  
 Exp R.T. : 7.085 min  
 Response: 0  
 Conc: N.D.



#8 DICHLORPROP

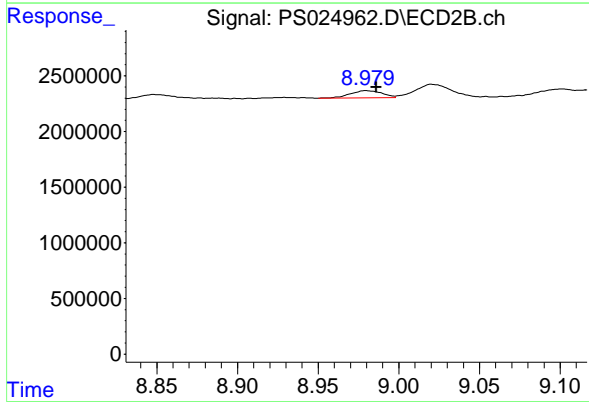
R.T.: 7.559 min  
 Delta R.T.: 0.008 min  
 Response: 3754989  
 Conc: 5.14 ng/ml



#12 2,4,5-T

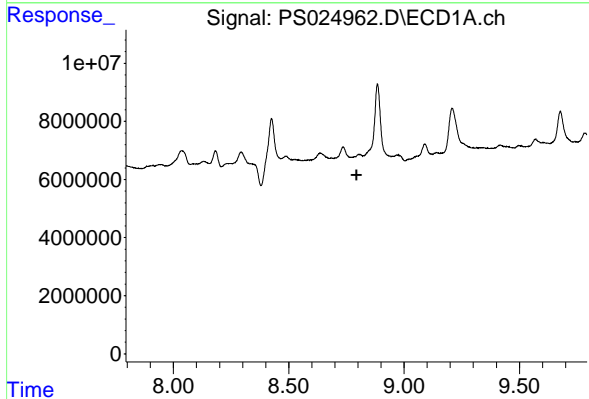
R.T.: 8.294 min  
 Delta R.T.: 0.005 min  
 Response: 48408214  
 Conc: 3.70 ng/ml

Instrument :  
 ECD\_S  
 ClientSampleId :



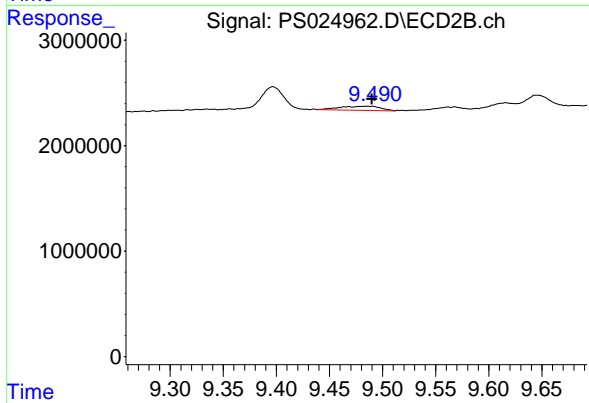
#12 2,4,5-T

R.T.: 8.980 min  
 Delta R.T.: -0.007 min  
 Response: 877743  
 Conc: N.D.



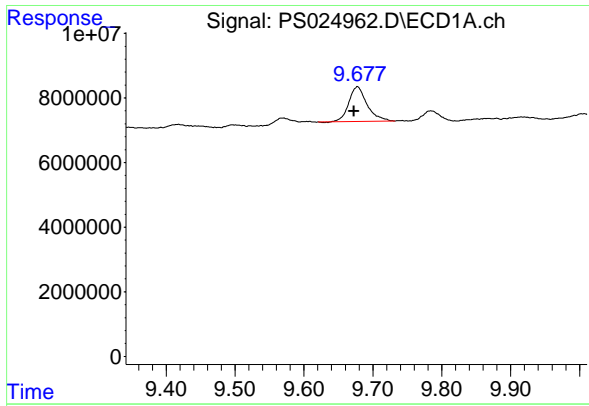
#13 2,4-DB

R.T.: 0.000 min  
 Exp R.T. : 8.794 min  
 Response: 0  
 Conc: N.D.



#13 2,4-DB

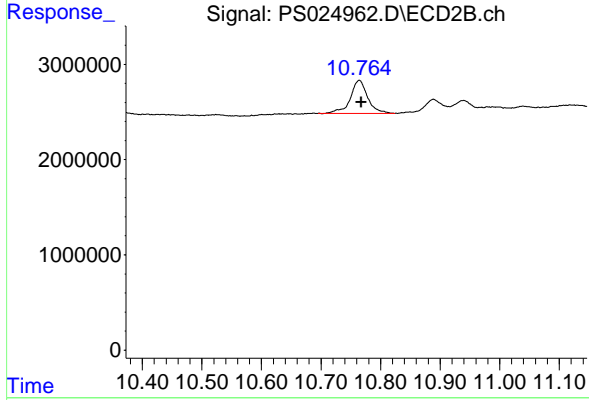
R.T.: 9.490 min  
 Delta R.T.: 0.000 min  
 Response: 1021435  
 Conc: 2.10 ng/ml



#15 Picloram

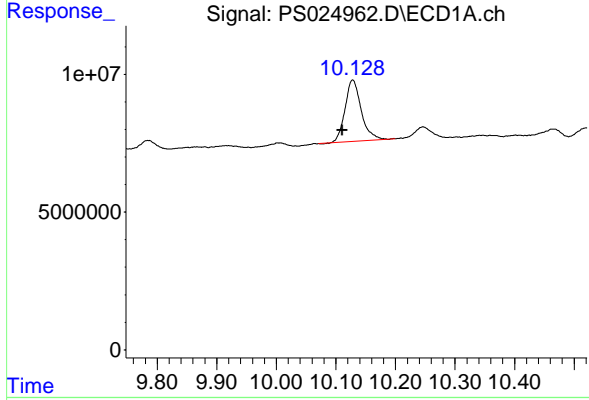
R.T.: 9.677 min  
 Delta R.T.: 0.005 min  
 Response: 19857374  
 Conc: 1.12 ng/ml

Instrument :  
 ECD\_S  
 ClientSampleId :



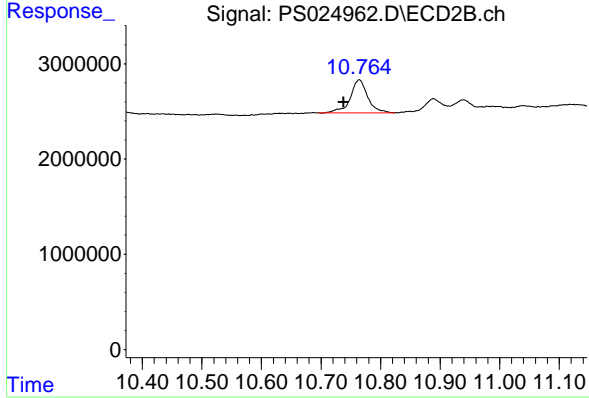
#15 Picloram

R.T.: 10.764 min  
 Delta R.T.: -0.003 min  
 Response: 7031614  
 Conc: 1.16 ng/ml



#16 DCPA

R.T.: 10.128 min  
 Delta R.T.: 0.017 min  
 Response: 42460625  
 Conc: 2.48 ng/ml



#16 DCPA

R.T.: 10.764 min  
 Delta R.T.: 0.026 min  
 Response: 7031614  
 Conc: 1.40 ng/ml