

Data Path : Z:\pestpcbsrv\HPCHEM1\ECD\_S\Data\PS112918\  
 Data File : PS002496.D  
 Signal(s) : Signal #1: ECD1A.ch Signal #2: ECD2B.ch  
 Acq On : 30 Nov 2018 00:30  
 Operator : EI\SJ  
 Sample : J6079-06  
 Misc :  
 ALS Vial : 15 Sample Multiplier: 1

Instrument :  
 ECD\_S  
 ClientSampleId :

Integration File signal 1: autoint1.e  
 Integration File signal 2: autoint2.e  
 Quant Time: Nov 30 02:48:04 2018  
 Quant Method : Z:\pestpcbsrv\HPCHEM1\ECD\_S\Method\PS110918.M  
 Quant Title : 8080.M  
 QLast Update : Fri Nov 09 15:54:35 2018  
 Response via : Initial Calibration  
 Integrator: ChemStation

Volume Inj. : 2 µl  
 Signal #1 Phase : Rtx-CLPesticides Signal #2 Phase: Rtx-CLPesticides2  
 Signal #1 Info : 30M x 0.32mm x0.5 Signal #2 Info : 30M x 0.32mm x 0.25µm

	Compound	RT#1	RT#2	Resp#1	Resp#2	ng/ml	ng/ml
-----							
System Monitoring Compounds							
4) S	2,4-DCAA	11.394	10.891	130.2E6	118.1E6	427.311	322.815
Target Compounds							
2) T	3,5-DICHL...	0.000	9.075	0	1382161	N.D.	3.049 #
3) T	4-Nitroph...	11.050	10.049	36218784	23239743	223.224	132.638 #
5) T	DICAMBA	11.767	11.237	7509828	875998	5.420	0.648 #
6) T	MCPD	0.000	11.471	0	1744533	N.D.	1.923 #
7) T	MCPA	12.377	11.830	6905025	22760840	4.781	16.174 #
8) T	DICHLORPROP	12.956	12.352	6706170	1019790	19.370	3.077 #
9) T	2,4-D	13.233	12.875	23019619	-2935383	71.618	N.D. #
10) T	Pentachlo...	13.730	13.411	28394808	1936345	5.870	0.380 #
11) T	2,4,5-TP ...	14.590	13.985	3077789	17648156	1.638	8.749 #
12) T	2,4,5-T	14.940	14.559	1719833	2041623	1.020	1.306 #
14) T	DINOSEB	17.231	15.616	1898122	24605162	1.329	16.440 #
15) T	Picloram	16.916	0.000	14521337	0	6.838	N.D. #
16) T	DCPA	17.511	16.874	24450957	3322548	10.555	1.385 #
-----							

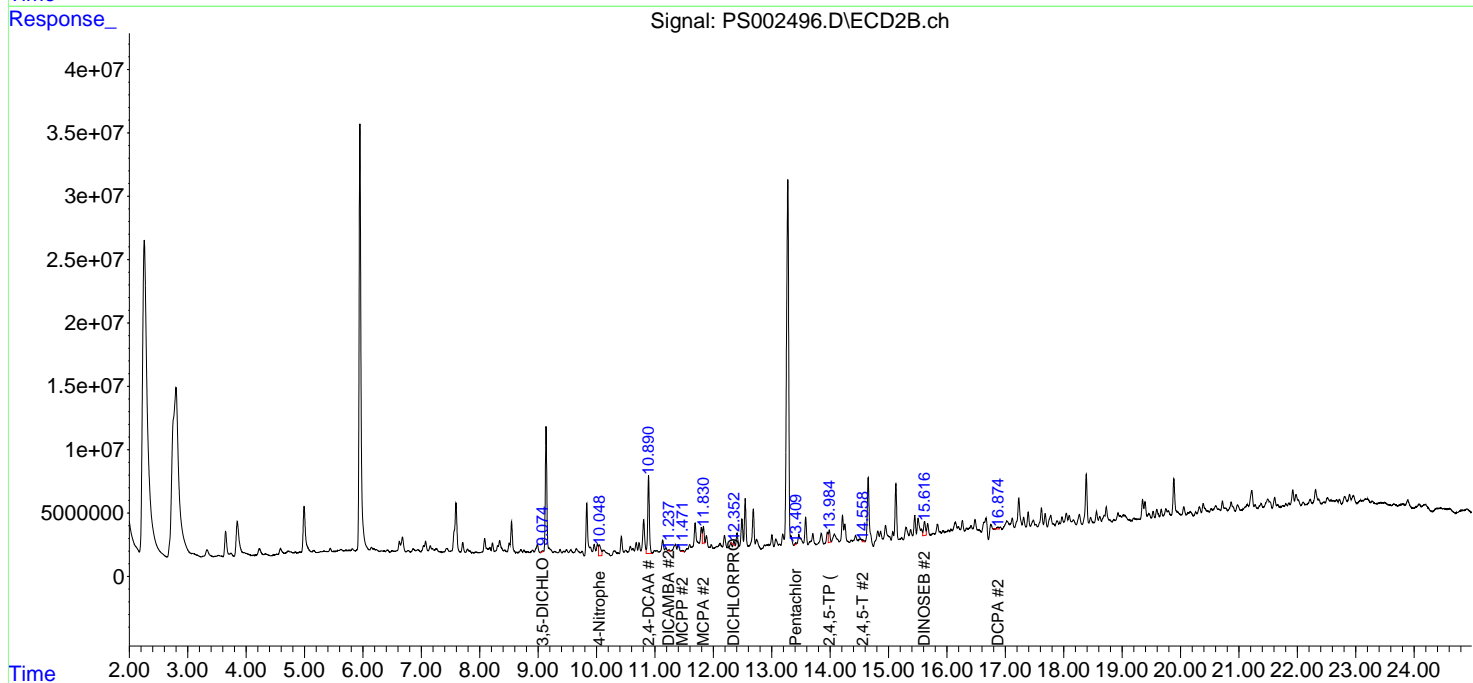
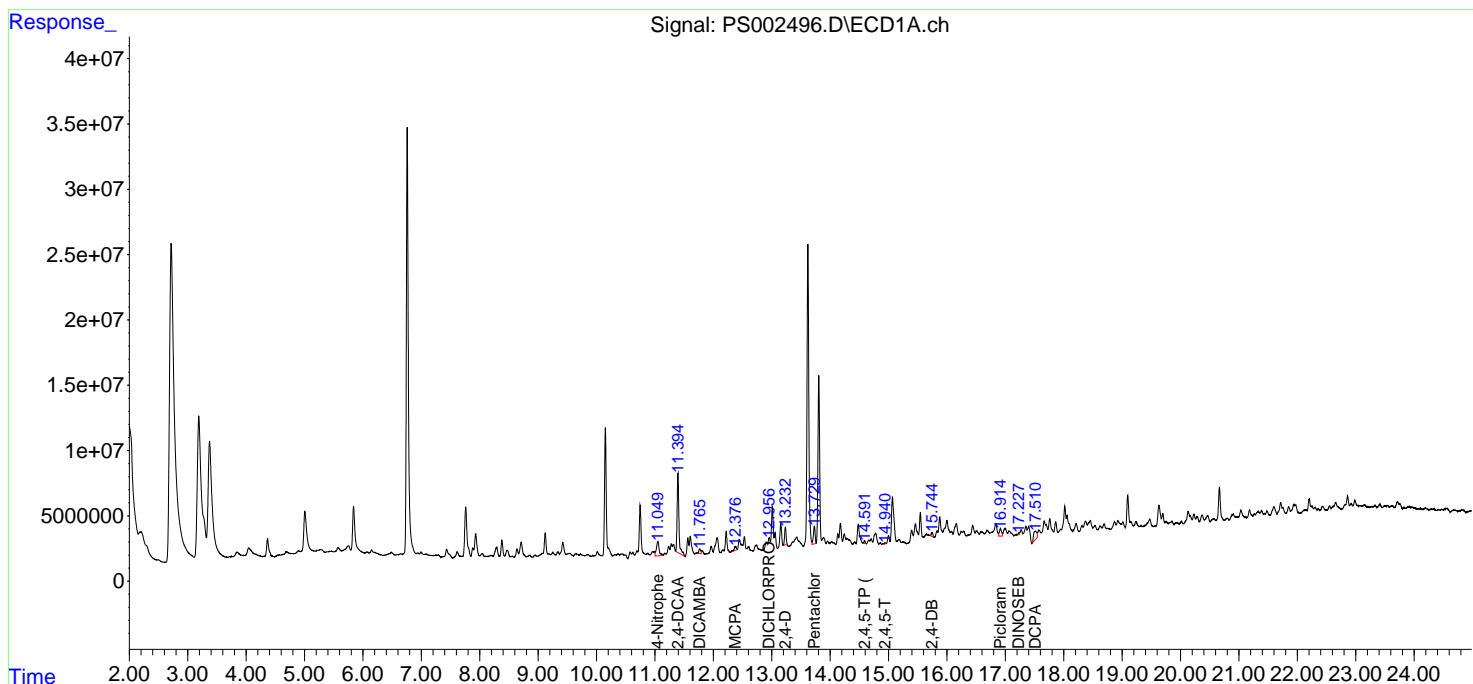
(f)=RT Delta > 1/2 Window (#)=Amounts differ by > 25% (m)=manual int.

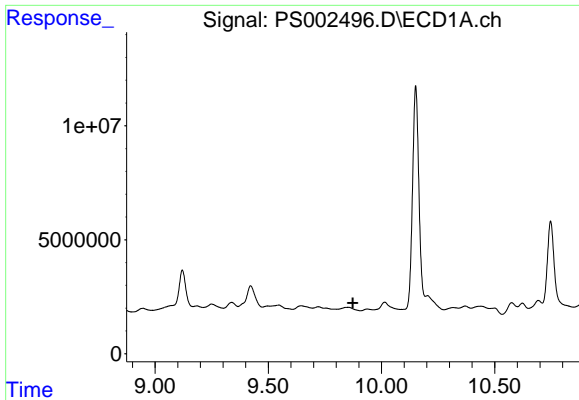
Data Path : Z:\pestpcbsrv\HPCHEM1\ECD\_S\Data\PS112918\  
 Data File : PS002496.D  
 Signal(s) : Signal #1: ECD1A.ch Signal #2: ECD2B.ch  
 Acq On : 30 Nov 2018 00:30  
 Operator : EI\SJ  
 Sample : J6079-06  
 Misc :  
 ALS Vial : 15 Sample Multiplier: 1

Instrument :  
 ECD\_S  
 ClientSampled :

Integration File signal 1: autoint1.e  
 Integration File signal 2: autoint2.e  
 Quant Time: Nov 30 02:48:04 2018  
 Quant Method : Z:\pestpcbsrv\HPCHEM1\ECD\_S\Method\PS110918.M  
 Quant Title : 8080.M  
 QLast Update : Fri Nov 09 15:54:35 2018  
 Response via : Initial Calibration  
 Integrator: ChemStation

Volume Inj. : 2 µl  
 Signal #1 Phase : Rtx-CLPesticides Signal #2 Phase: Rtx-CLPesticides2  
 Signal #1 Info : 30M x 0.32mm x0.5 Signal #2 Info : 30M x 0.32mm x 0.25µm

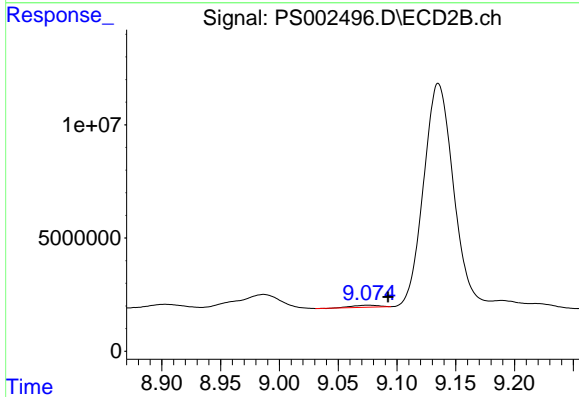




#2 3,5-DICHLORO BENZOIC ACID

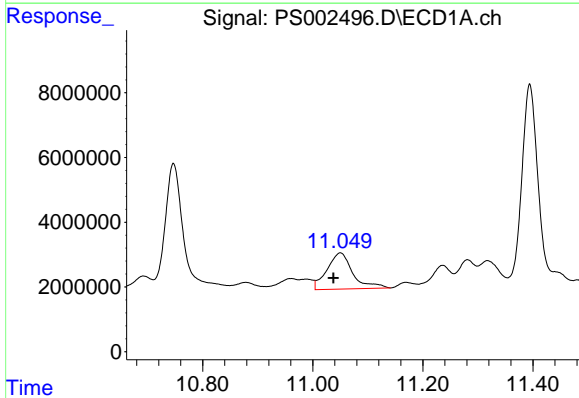
R.T.: 0.000 min  
 Exp R.T.: 9.874 min  
 Response: 0  
 Conc: N.D.

Instrument :  
 ECD\_S  
 ClientSampled :



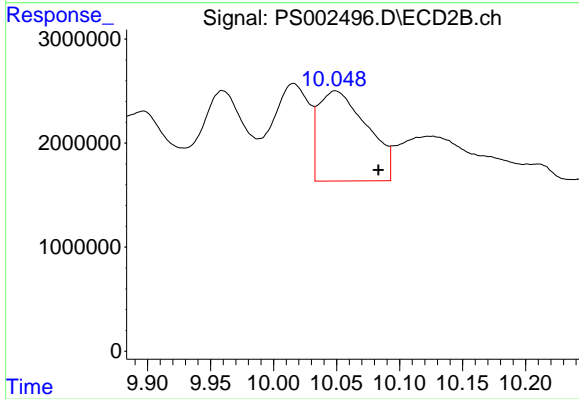
#2 3,5-DICHLORO BENZOIC ACID

R.T.: 9.075 min  
 Delta R.T.: -0.018 min  
 Response: 1382161  
 Conc: 3.05 ng/ml



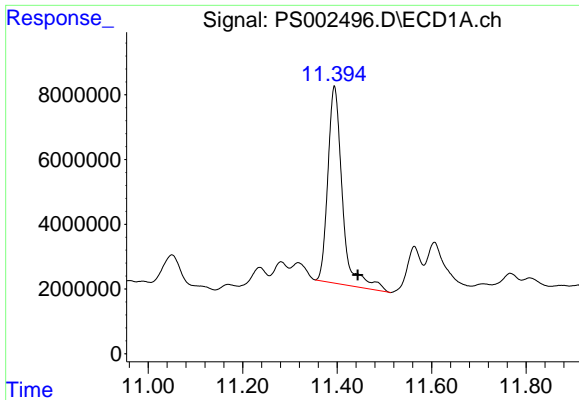
#3 4-Nitrophenol

R.T.: 11.050 min  
 Delta R.T.: 0.013 min  
 Response: 36218784  
 Conc: 223.22 ng/ml



#3 4-Nitrophenol

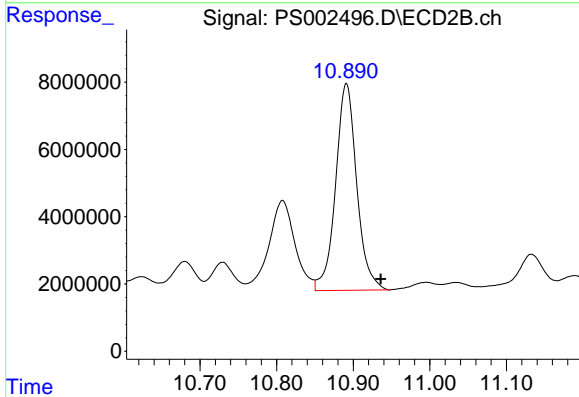
R.T.: 10.049 min  
 Delta R.T.: -0.034 min  
 Response: 23239743  
 Conc: 132.64 ng/ml



#4 2,4-DCAA

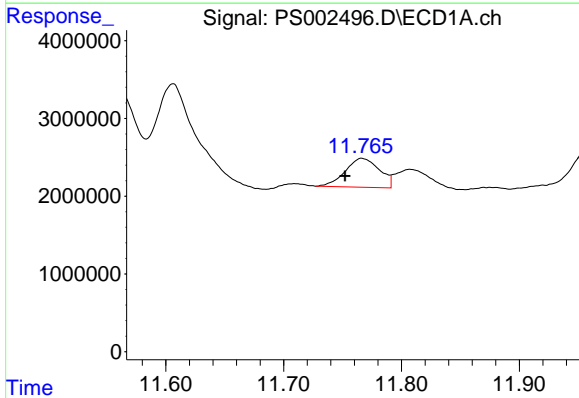
R.T.: 11.394 min  
 Delta R.T.: -0.050 min  
 Response: 130158830  
 Conc: 427.31 ng/ml

Instrument :  
 ECD\_S  
 ClientSampled :



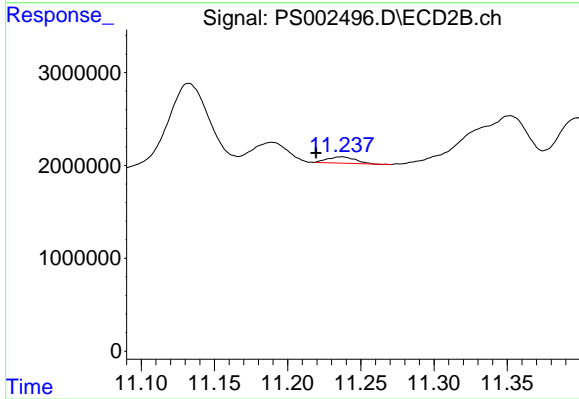
#4 2,4-DCAA

R.T.: 10.891 min  
 Delta R.T.: -0.045 min  
 Response: 118121995  
 Conc: 322.82 ng/ml



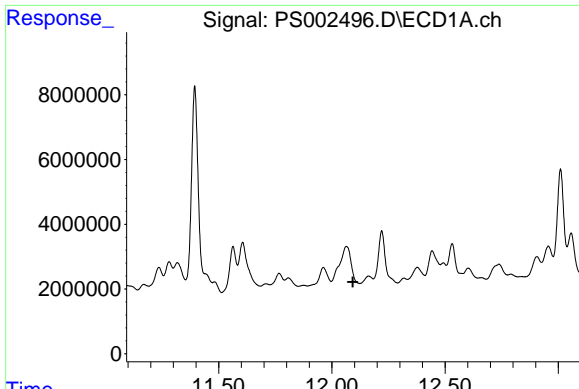
#5 DICAMBA

R.T.: 11.767 min  
 Delta R.T.: 0.015 min  
 Response: 7509828  
 Conc: 5.42 ng/ml



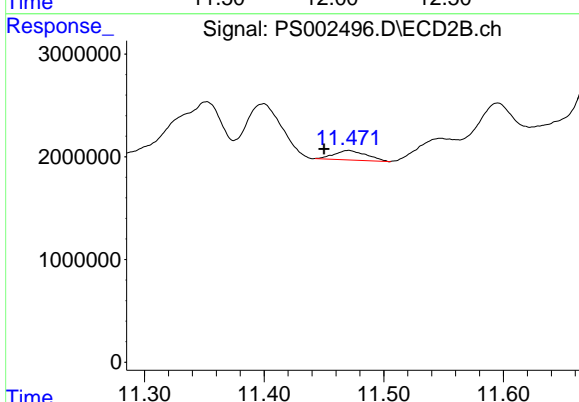
#5 DICAMBA

R.T.: 11.237 min  
 Delta R.T.: 0.018 min  
 Response: 875998  
 Conc: 0.65 ng/ml

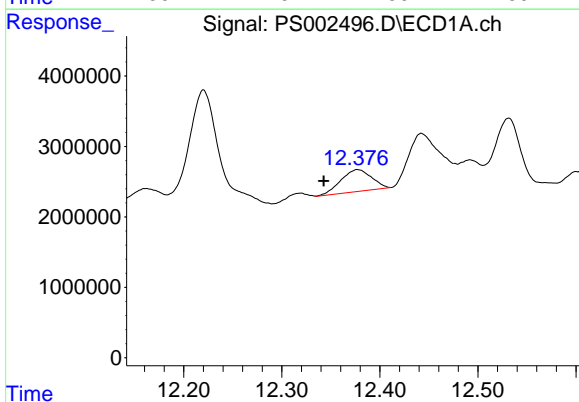


#6 MCP  
 R.T.: 0.000 min  
 Exp R.T.: 12.093 min  
 Response: 0  
 Conc: N.D.

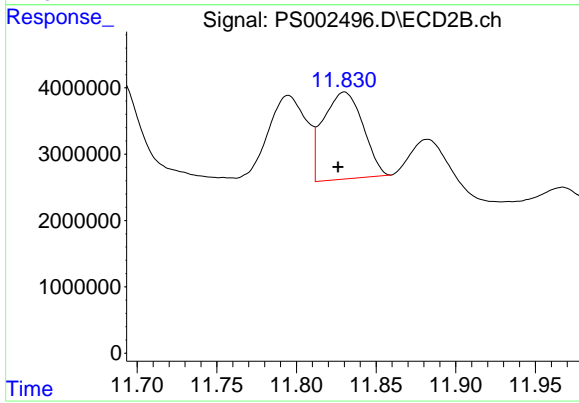
Instrument :  
 ECD\_S  
 ClientSampled :



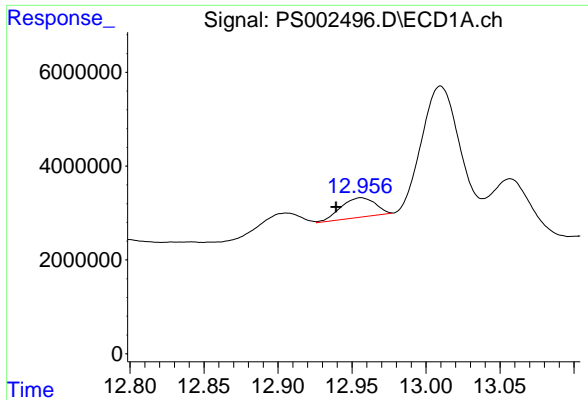
#6 MCP  
 R.T.: 11.471 min  
 Delta R.T.: 0.020 min  
 Response: 1744533  
 Conc: 1.92 ug/ml



#7 MCP  
 R.T.: 12.377 min  
 Delta R.T.: 0.035 min  
 Response: 6905025  
 Conc: 4.78 ug/ml

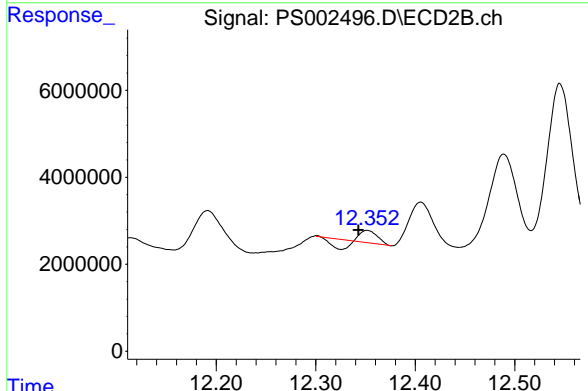


#7 MCP  
 R.T.: 11.830 min  
 Delta R.T.: 0.004 min  
 Response: 22760840  
 Conc: 16.17 ug/ml

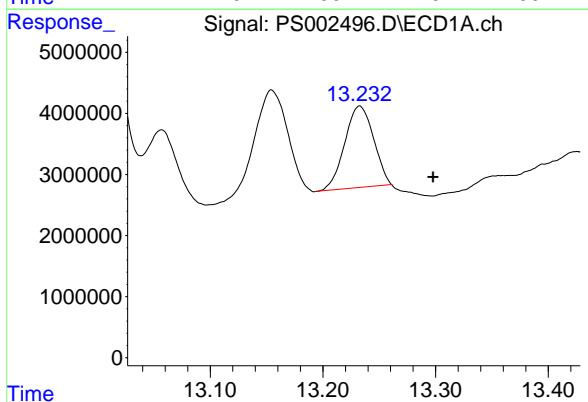


#8 DICHLORPROP  
 R.T.: 12.956 min  
 Delta R.T.: 0.017 min  
 Response: 6706170  
 Conc: 19.37 ng/ml

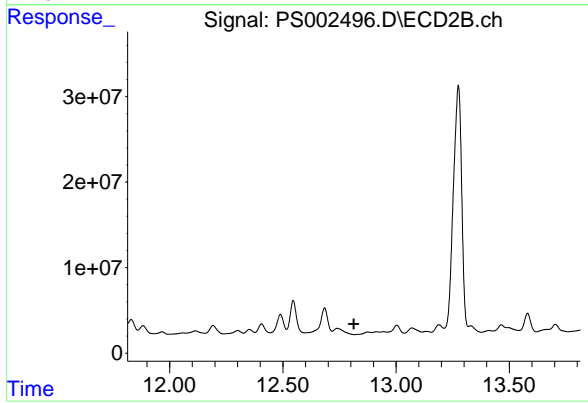
Instrument :  
 ECD\_S  
 ClientSampleId :



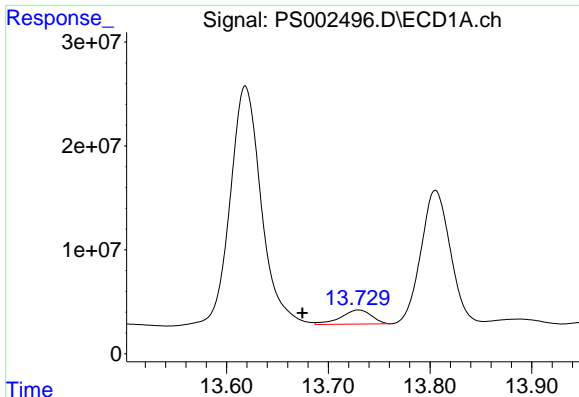
#8 DICHLORPROP  
 R.T.: 12.352 min  
 Delta R.T.: 0.009 min  
 Response: 1019790  
 Conc: 3.08 ng/ml



#9 2,4-D  
 R.T.: 13.233 min  
 Delta R.T.: -0.065 min  
 Response: 23019619  
 Conc: 71.62 ng/ml



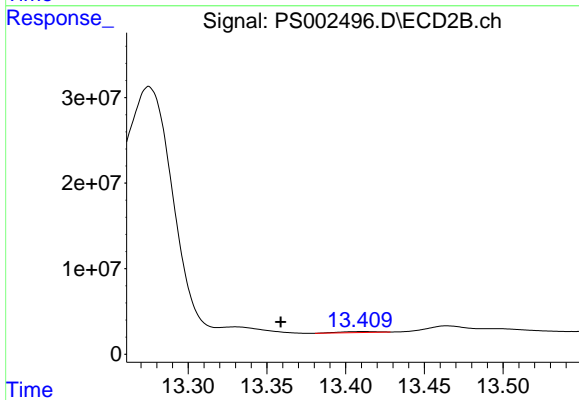
#9 2,4-D  
 R.T.: 12.875 min  
 Delta R.T.: 0.061 min  
 Response: -2935383  
 Conc: N.D.



#10 Pentachlorophenol

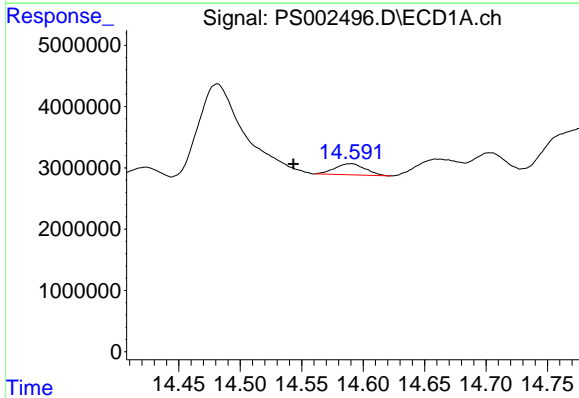
R.T.: 13.730 min  
 Delta R.T.: 0.055 min  
 Response: 28394808  
 Conc: 5.87 ng/ml

Instrument :  
 ECD\_S  
 ClientSampleId :



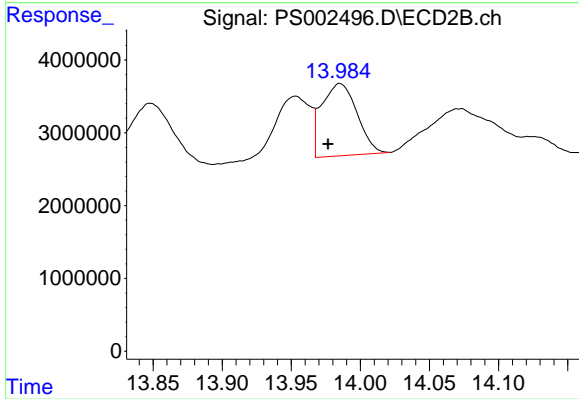
#10 Pentachlorophenol

R.T.: 13.411 min  
 Delta R.T.: 0.053 min  
 Response: 1936345  
 Conc: 0.38 ng/ml



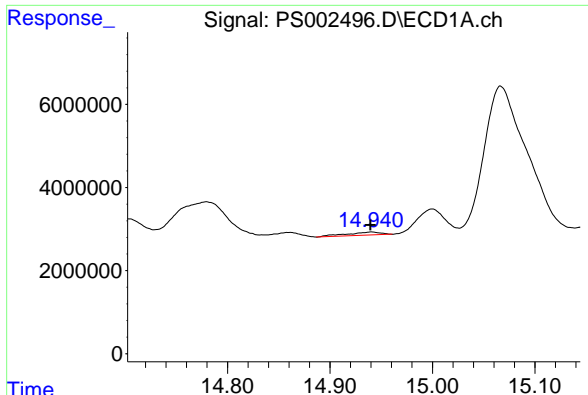
#11 2,4,5-TP (SILVEX)

R.T.: 14.590 min  
 Delta R.T.: 0.046 min  
 Response: 3077789  
 Conc: 1.64 ng/ml



#11 2,4,5-TP (SILVEX)

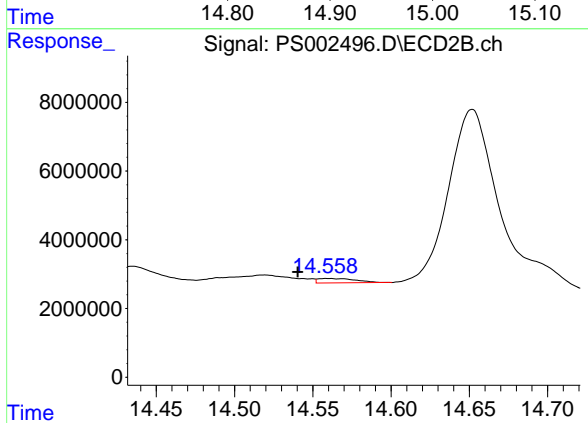
R.T.: 13.985 min  
 Delta R.T.: 0.009 min  
 Response: 17648156  
 Conc: 8.75 ng/ml



#12 2,4,5-T

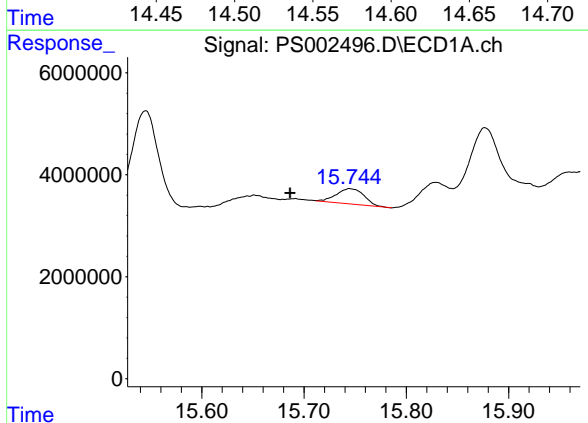
R.T.: 14.940 min  
 Delta R.T.: 0.000 min  
 Response: 1719833  
 Conc: 1.02 ng/ml

Instrument :  
 ECD\_S  
 ClientSampled :



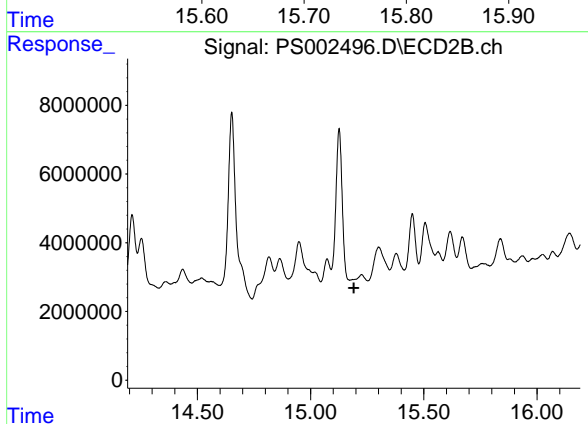
#12 2,4,5-T

R.T.: 14.559 min  
 Delta R.T.: 0.019 min  
 Response: 2041623  
 Conc: 1.31 ng/ml



#13 2,4-DB

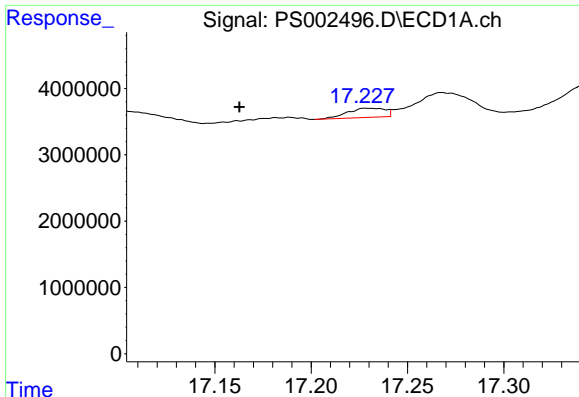
R.T.: 15.745 min  
 Delta R.T.: 0.059 min  
 Response: 5661731  
 Conc: 29.22 ng/ml



#13 2,4-DB

R.T.: 15.225 min  
 Delta R.T.: 0.034 min  
 Response: -15362718  
 Conc: N.D.

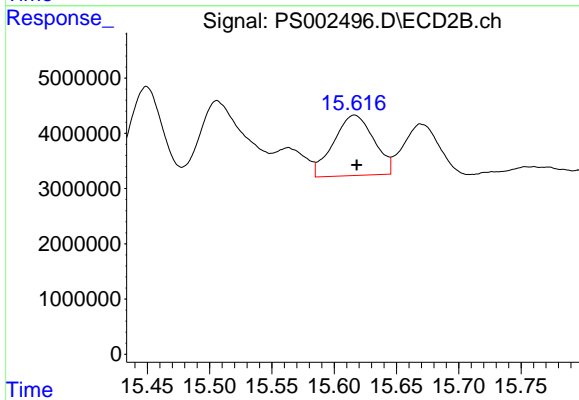




#14 DINOSEB

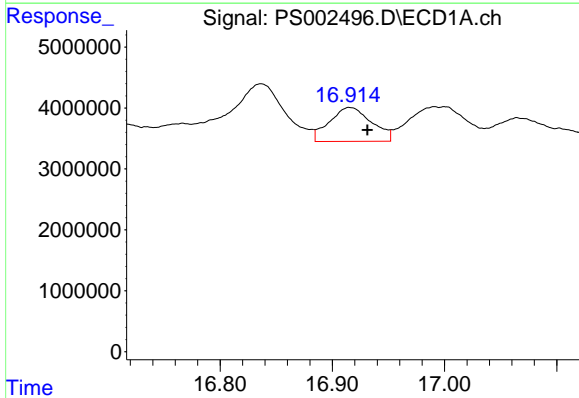
R.T.: 17.231 min  
 Delta R.T.: 0.068 min  
 Response: 1898122  
 Conc: 1.33 ng/ml

Instrument :  
 ECD\_S  
 ClientSampleId :



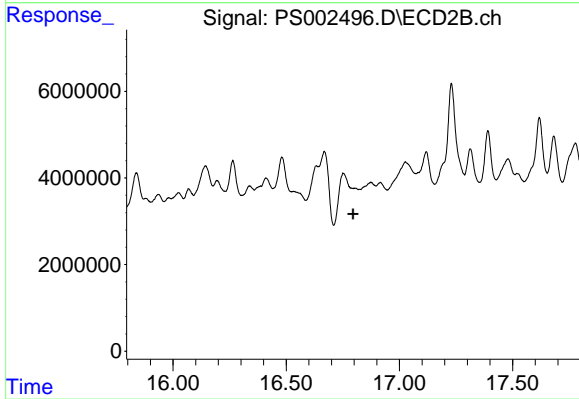
#14 DINOSEB

R.T.: 15.616 min  
 Delta R.T.: -0.002 min  
 Response: 24605162  
 Conc: 16.44 ng/ml



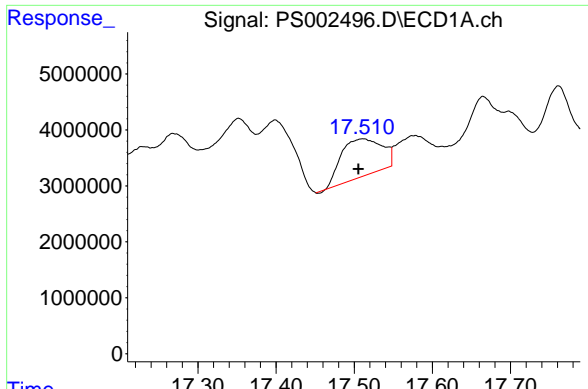
#15 Picloram

R.T.: 16.916 min  
 Delta R.T.: -0.015 min  
 Response: 14521337  
 Conc: 6.84 ng/ml



#15 Picloram

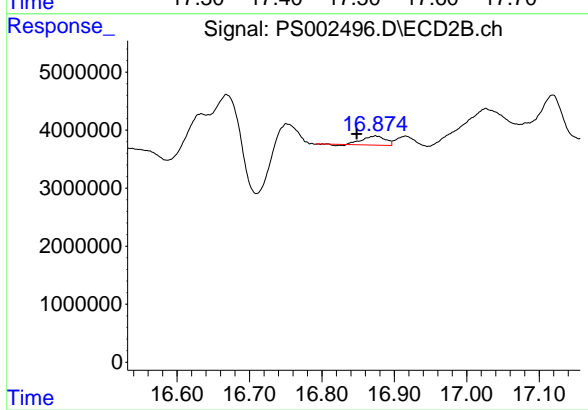
R.T.: 0.000 min  
 Exp R.T. : 16.795 min  
 Response: 0  
 Conc: N.D.



#16 DCPA

R.T.: 17.511 min  
Delta R.T.: 0.005 min  
Response: 24450957  
Conc: 10.55 ng/ml

Instrument :  
ECD\_S  
ClientSampleId :



#16 DCPA

R.T.: 16.874 min  
Delta R.T.: 0.026 min  
Response: 3322548  
Conc: 1.39 ng/ml