

Data Path : Z:\pestpcbsrv\HPCHEM1\ECD_S\Data\PS120220\
 Data File : PS013395.D
 Signal(s) : Signal #1: ECD1A.ch Signal #2: ECD2B.ch
 Acq On : 02 Dec 2020 19:07
 Operator : DD\AJ
 Sample : HSTDICC1500
 Misc :
 ALS Vial : 12 Sample Multiplier: 1

Instrument :
 ECD_S
 ClientSampleId :

Integration File signal 1: autoint1.e
 Integration File signal 2: autoint2.e
 Quant Time: Dec 03 01:11:56 2020
 Quant Method : Z:\pestpcbsrv\HPCHEM1\ECD_S\Method\PS120220.M
 Quant Title : 8080.M
 QLast Update : Thu Dec 03 01:08:43 2020
 Response via : Initial Calibration
 Integrator: ChemStation

Volume Inj. : 2 µl
 Signal #1 Phase : Rtx-CLPesticides Signal #2 Phase: Rtx-CLPesticides2
 Signal #1 Info : 30M x 0.32mm x0.5 Signal #2 Info : 30M x 0.32mm x 0.25µm

	Compound	RT#1	RT#2	Resp#1	Resp#2	ng/ml	ng/ml

System Monitoring Compounds							
4) S	2,4-DCAA	7.210	6.912	1434.5E6	606.2E6	1558.003	1568.078
Target Compounds							
1) T	Dalapon	3.032	2.623	1538.8E6	727.1E6	1437.698	1400.292
2) T	3,5-DICHL...	6.426	6.066	1807.1E6	869.1E6	1420.936	1413.649
3) T	4-Nitroph...	7.042	6.522	666.7E6	352.0E6	1471.300	1455.459
5) T	DICAMBA	7.400	7.080	5256.6E6	2324.6E6	1426.026	1389.560
6) T	MCP P	7.572	7.180	433.1E6	199.0E6	157.785	150.449
7) T	MCPA	7.723	7.397	597.7E6	295.8E6	153.014	145.236
8) T	DICHLORPROP	8.091	7.704	1336.6E6	633.0E6	1461.940	1439.307
9) T	2,4-D	8.321	8.000	1542.5E6	781.0E6	1504.765	1453.882
10) T	Pentachlo...	8.630	8.426	17607.7E6	7042.0E6	1315.895	1259.635
11) T	2,4,5-TP ...	9.178	8.787	7481.5E6	3197.2E6	1408.658	1369.225
12) T	2,4,5-T	9.464	9.167	7720.3E6	3181.9E6	1402.771	1414.337
13) T	2,4-DB	10.016	9.673	1446.9E6	455.5E6	1529.036	1539.185
14) T	DINOSEB	11.171	10.003	5843.9E6	2312.4E6	1400.317	1402.583
15) T	Picloram	11.000	10.993	11048.4E6	5075.3E6	1537.790	1435.923
16) T	DCPA	11.436	10.930	9419.2E6	4069.1E6	1399.736	1351.133

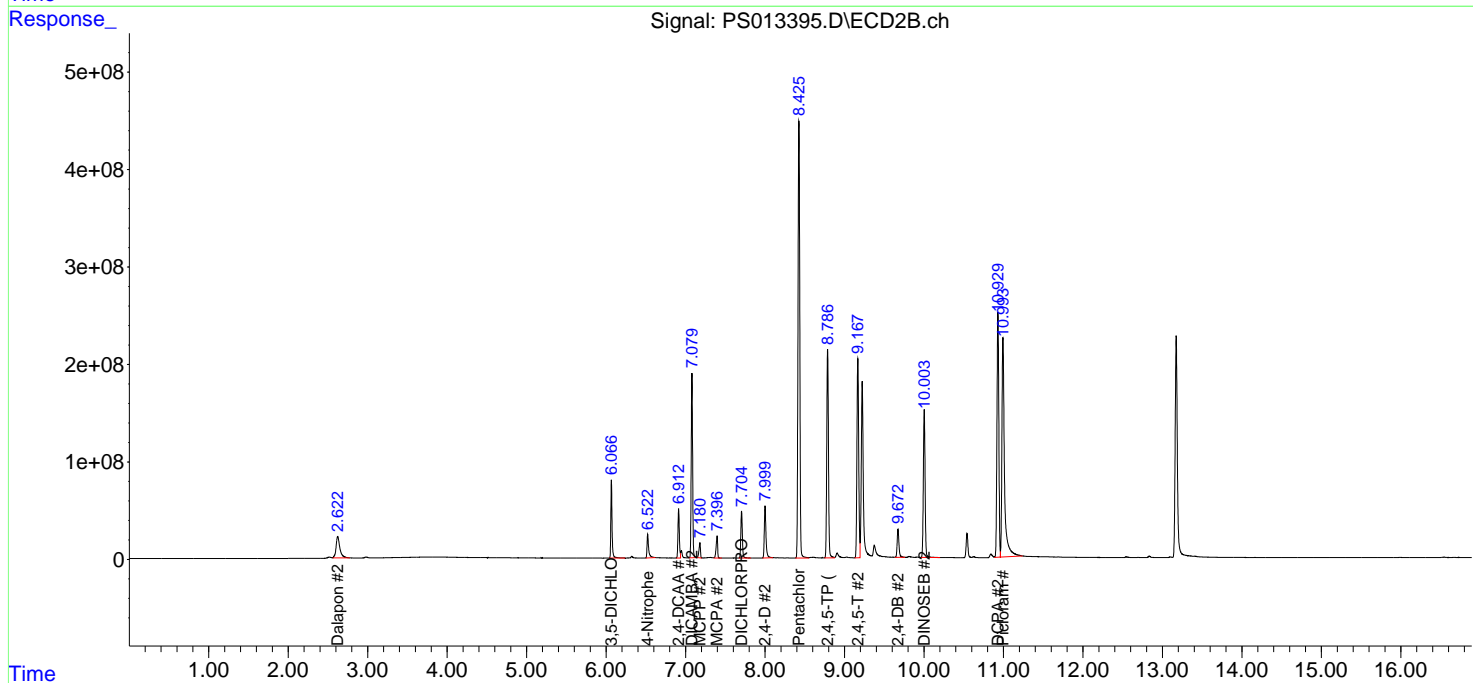
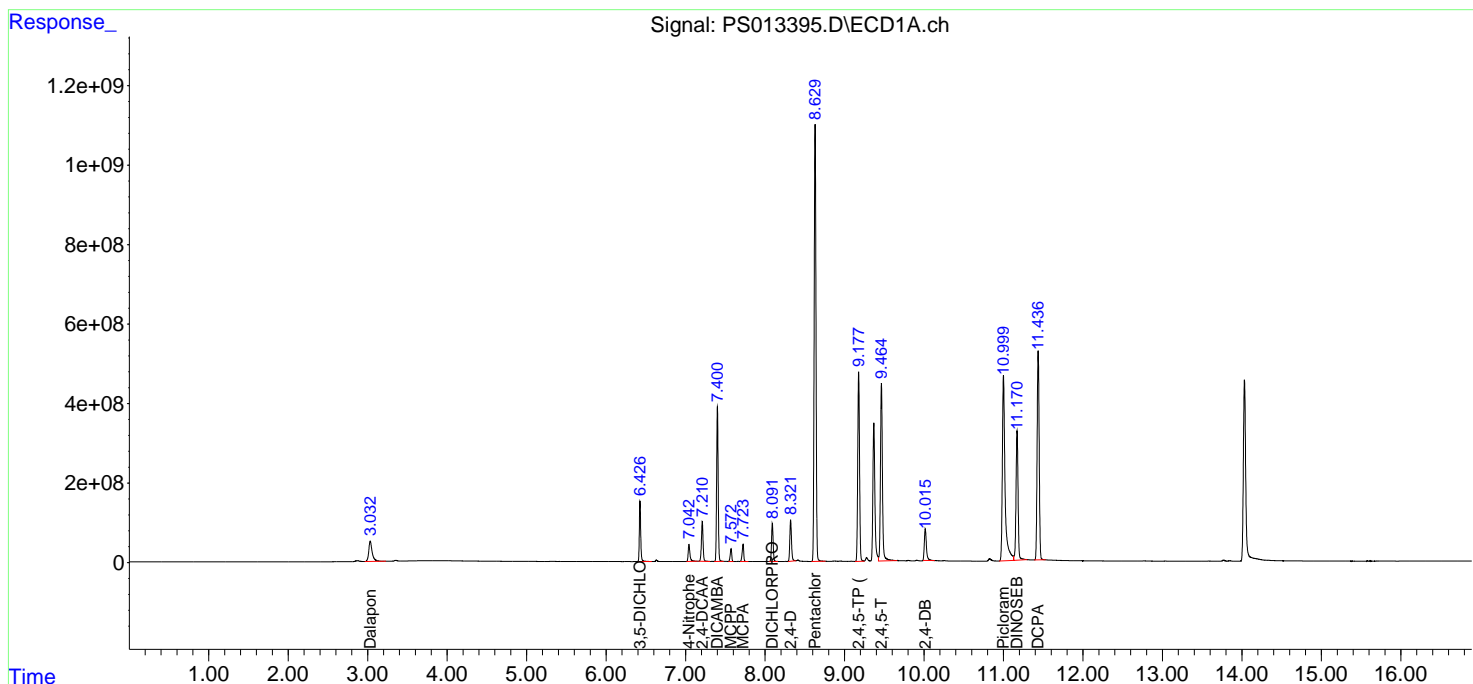
(f)=RT Delta > 1/2 Window (#)=Amounts differ by > 25% (m)=manual int.

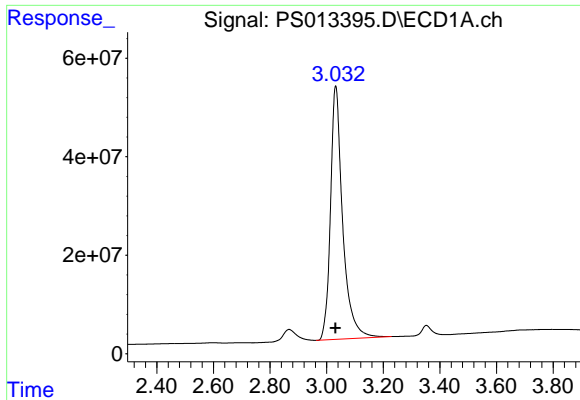
Data Path : Z:\pestpcbsrv\HPCHEM1\ECD_S\Data\PS120220\
 Data File : PS013395.D
 Signal(s) : Signal #1: ECD1A.ch Signal #2: ECD2B.ch
 Acq On : 02 Dec 2020 19:07
 Operator : DD\AJ
 Sample : HSTDICC1500
 Misc :
 ALS Vial : 12 Sample Multiplier: 1

Instrument :
 ECD_S
 ClientSampled :

Integration File signal 1: autoint1.e
 Integration File signal 2: autoint2.e
 Quant Time: Dec 03 01:11:56 2020
 Quant Method : Z:\pestpcbsrv\HPCHEM1\ECD_S\Method\PS120220.M
 Quant Title : 8080.M
 QLast Update : Thu Dec 03 01:08:43 2020
 Response via : Initial Calibration
 Integrator: ChemStation

Volume Inj. : 2 µl
 Signal #1 Phase : Rtx-CLPesticides Signal #2 Phase: Rtx-CLPesticides2
 Signal #1 Info : 30M x 0.32mm x0.5 Signal #2 Info : 30M x 0.32mm x 0.25µm

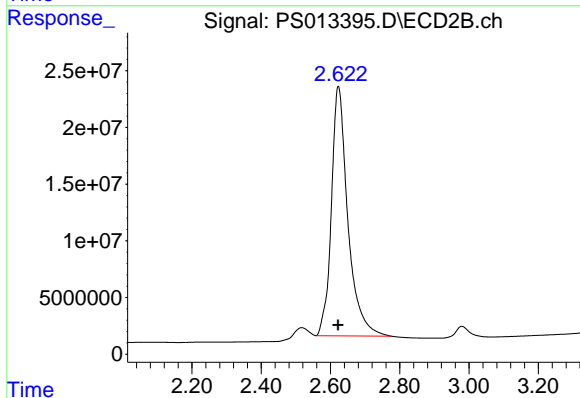




#1 Dalapon

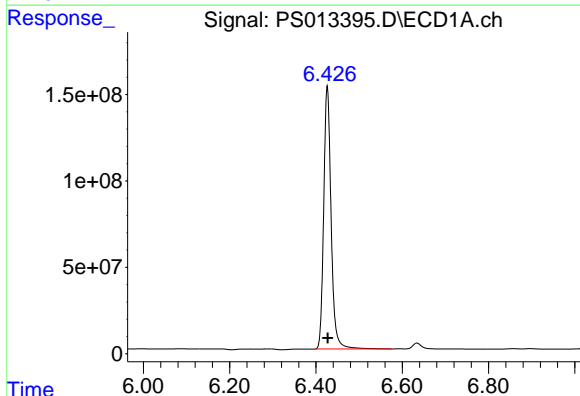
R.T.: 3.032 min
 Delta R.T.: 0.001 min
 Response: 1538780078
 Conc: 1437.70 ng/ml

Instrument :
 ECD_S
 ClientSampleId :



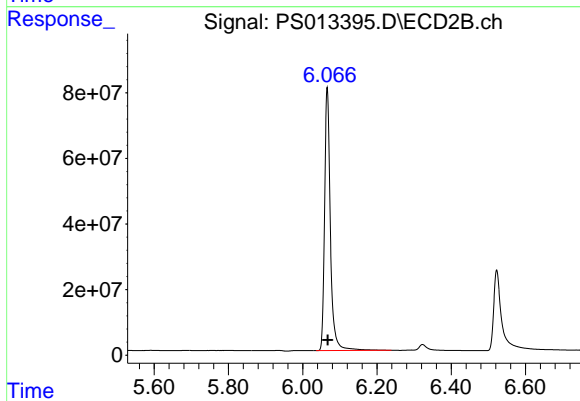
#1 Dalapon

R.T.: 2.623 min
 Delta R.T.: 0.000 min
 Response: 727050433
 Conc: 1400.29 ng/ml



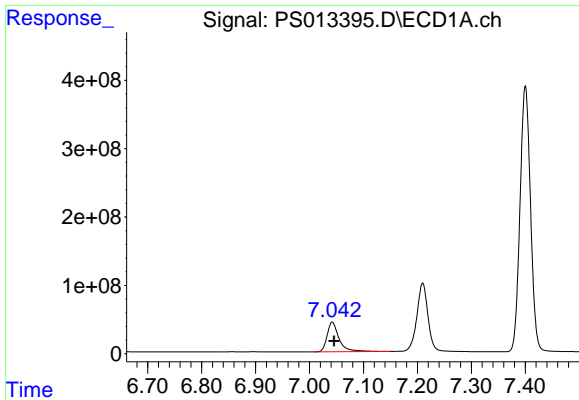
#2 3,5-DICHLOROBENZOIC ACID

R.T.: 6.426 min
 Delta R.T.: -0.001 min
 Response: 1807112123
 Conc: 1420.94 ng/ml



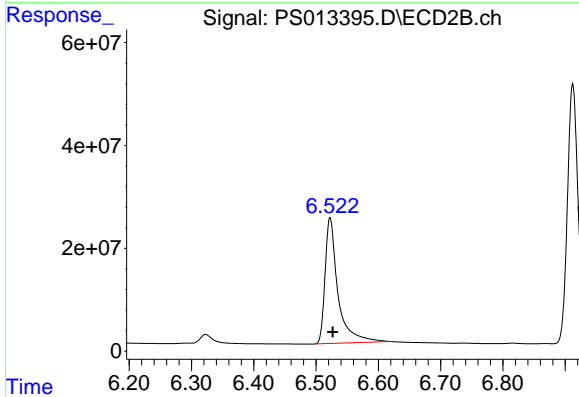
#2 3,5-DICHLOROBENZOIC ACID

R.T.: 6.066 min
 Delta R.T.: -0.002 min
 Response: 869098290
 Conc: 1413.65 ng/ml

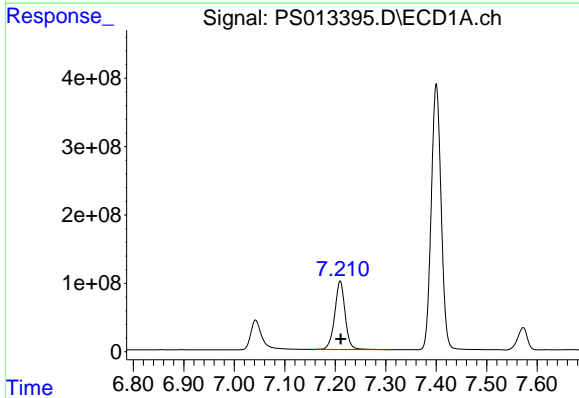


#3 4-Nitrophenol
 R.T.: 7.042 min
 Delta R.T.: -0.004 min
 Response: 666658540
 Conc: 1471.30 ng/ml

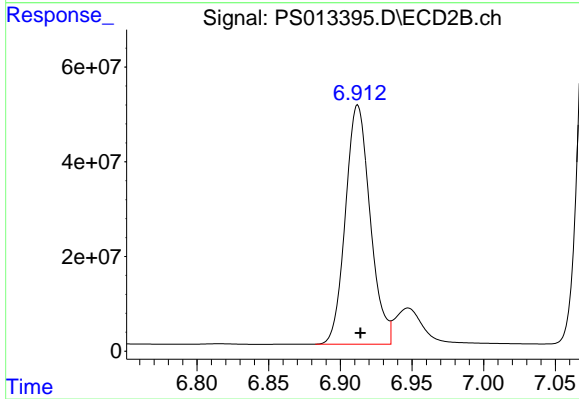
Instrument :
 ECD_S
 ClientSampled :



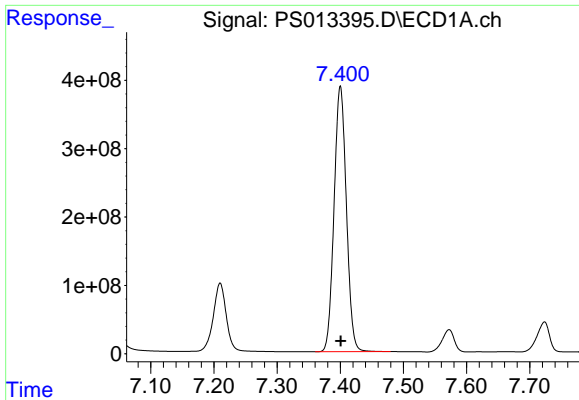
#3 4-Nitrophenol
 R.T.: 6.522 min
 Delta R.T.: -0.005 min
 Response: 352037970
 Conc: 1455.46 ng/ml



#4 2,4-DCAA
 R.T.: 7.210 min
 Delta R.T.: -0.001 min
 Response: 1434509011
 Conc: 1558.00 ng/ml

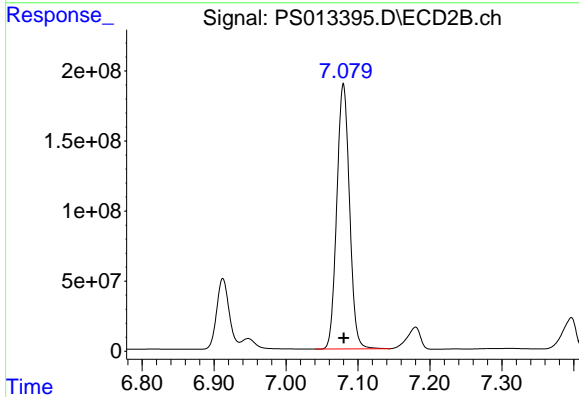


#4 2,4-DCAA
 R.T.: 6.912 min
 Delta R.T.: -0.002 min
 Response: 606209602
 Conc: 1568.08 ng/ml

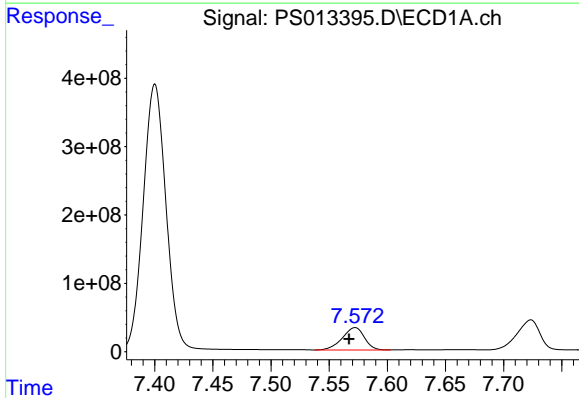


#5 DICAMBA
 R.T.: 7.400 min
 Delta R.T.: 0.000 min
 Response: 5256562297
 Conc: 1426.03 ng/ml

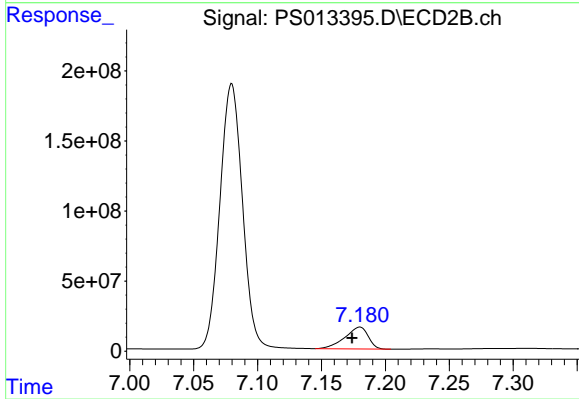
Instrument :
 ECD_S
 ClientSampled :



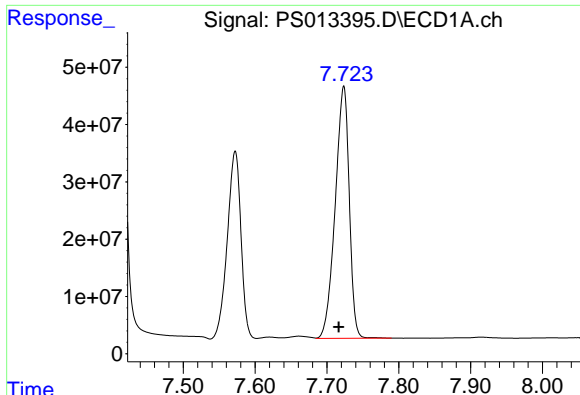
#5 DICAMBA
 R.T.: 7.080 min
 Delta R.T.: 0.000 min
 Response: 2324632027
 Conc: 1389.56 ng/ml



#6 MCP
 R.T.: 7.572 min
 Delta R.T.: 0.005 min
 Response: 433069713
 Conc: 157.78 ug/ml



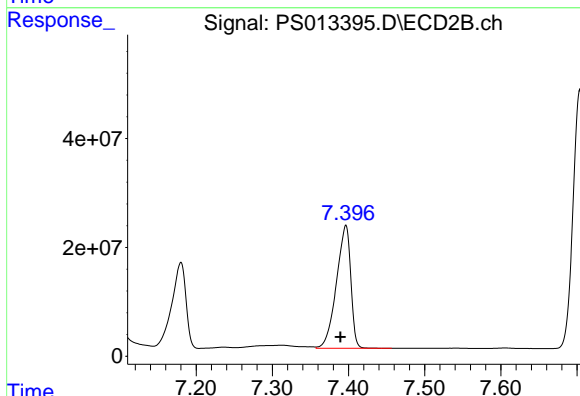
#6 MCP
 R.T.: 7.180 min
 Delta R.T.: 0.006 min
 Response: 198962077
 Conc: 150.45 ug/ml



#7 MCPA

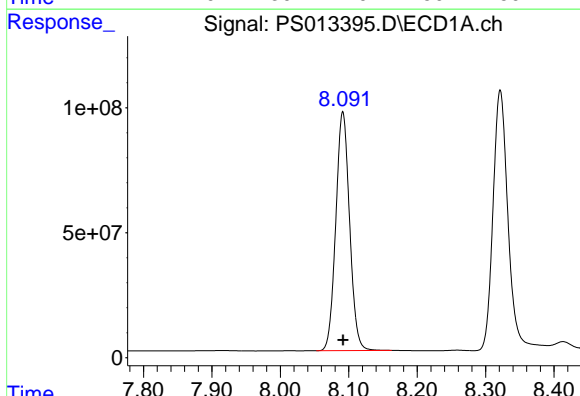
R.T.: 7.723 min
 Delta R.T.: 0.007 min
 Response: 597713892
 Conc: 153.01 ug/ml

Instrument :
 ECD_S
 ClientSampleId :



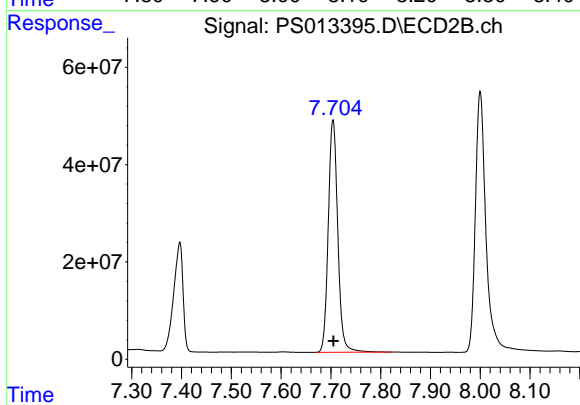
#7 MCPA

R.T.: 7.397 min
 Delta R.T.: 0.007 min
 Response: 295784274
 Conc: 145.24 ug/ml



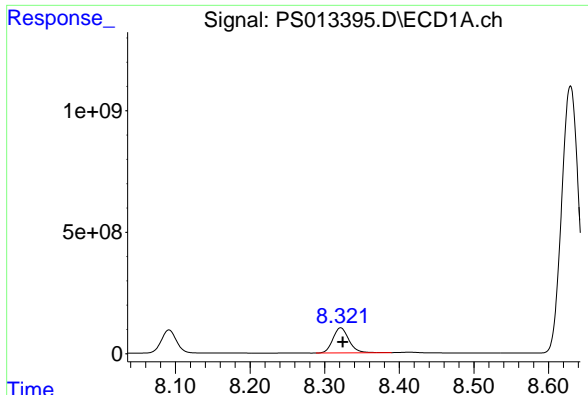
#8 DICHLORPROP

R.T.: 8.091 min
 Delta R.T.: 0.000 min
 Response: 1336627447
 Conc: 1461.94 ng/ml



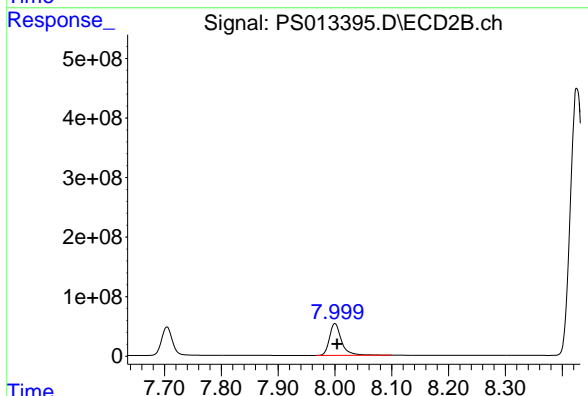
#8 DICHLORPROP

R.T.: 7.704 min
 Delta R.T.: 0.000 min
 Response: 632983827
 Conc: 1439.31 ng/ml

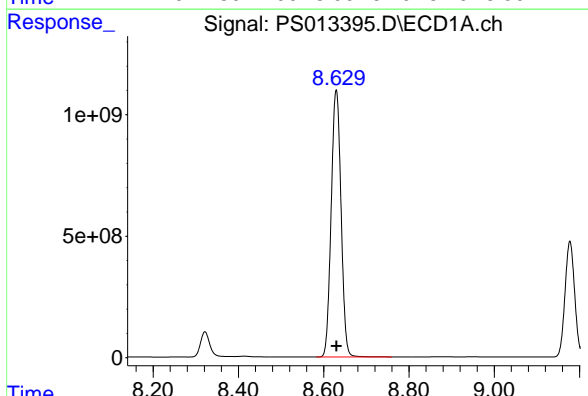


#9 2,4-D
 R.T.: 8.321 min
 Delta R.T.: -0.003 min
 Response: 1542460224
 Conc: 1504.77 ng/ml

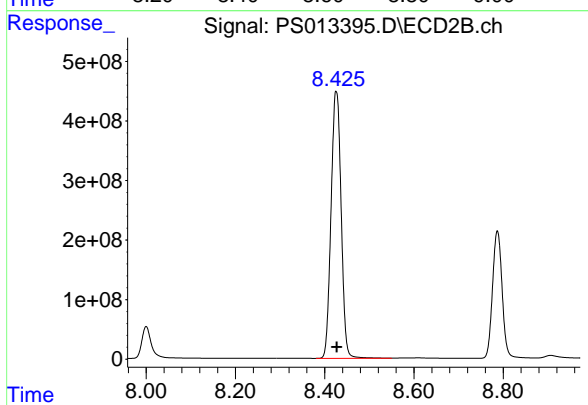
Instrument :
 ECD_S
 ClientSampleId :



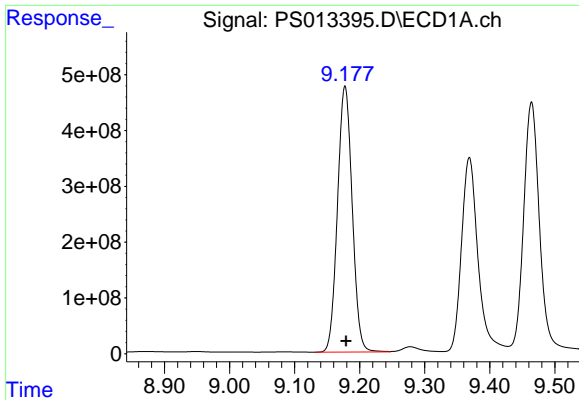
#9 2,4-D
 R.T.: 8.000 min
 Delta R.T.: -0.004 min
 Response: 781000686
 Conc: 1453.88 ng/ml



#10 Pentachlorophenol
 R.T.: 8.630 min
 Delta R.T.: 0.000 min
 Response: 17607715822
 Conc: 1315.90 ng/ml

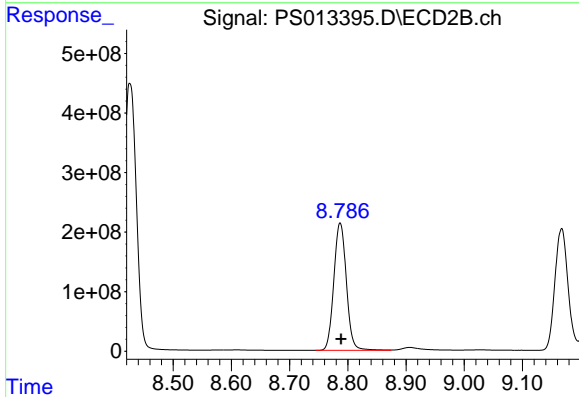


#10 Pentachlorophenol
 R.T.: 8.426 min
 Delta R.T.: -0.001 min
 Response: 7041988561
 Conc: 1259.63 ng/ml

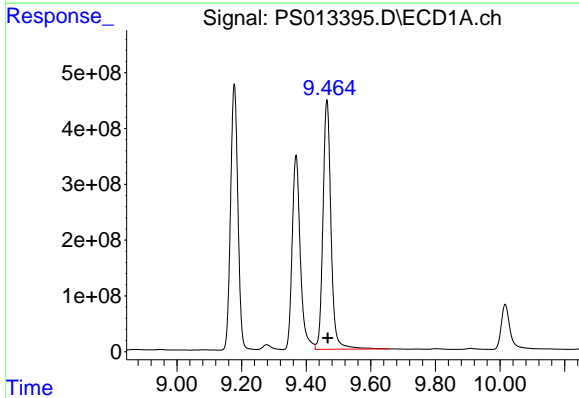


#11 2,4,5-TP (SILVEX)
 R.T.: 9.178 min
 Delta R.T.: -0.002 min
 Response: 7481478505
 Conc: 1408.66 ng/ml

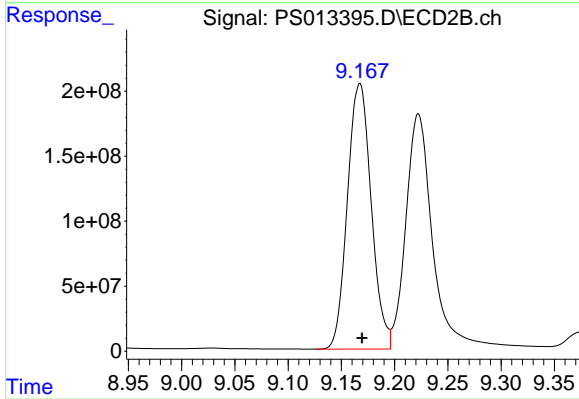
Instrument :
 ECD_S
 ClientSampled :



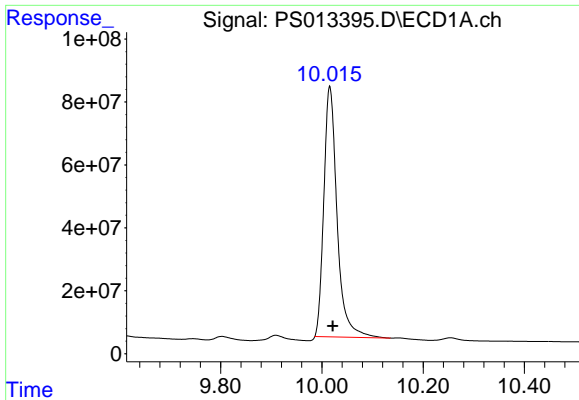
#11 2,4,5-TP (SILVEX)
 R.T.: 8.787 min
 Delta R.T.: -0.002 min
 Response: 3197242785
 Conc: 1369.22 ng/ml



#12 2,4,5-T
 R.T.: 9.464 min
 Delta R.T.: -0.003 min
 Response: 7720291674
 Conc: 1402.77 ng/ml

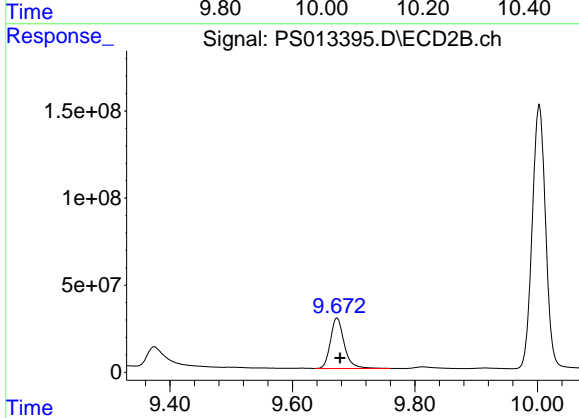


#12 2,4,5-T
 R.T.: 9.167 min
 Delta R.T.: -0.002 min
 Response: 3181943065
 Conc: 1414.34 ng/ml

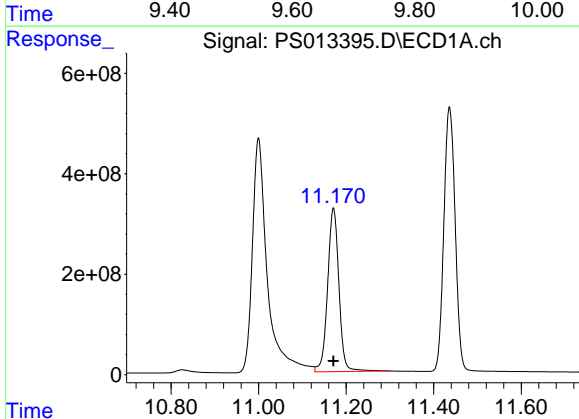


#13 2,4-DB
 R.T.: 10.016 min
 Delta R.T.: -0.006 min
 Response: 1446934962
 Conc: 1529.04 ng/ml

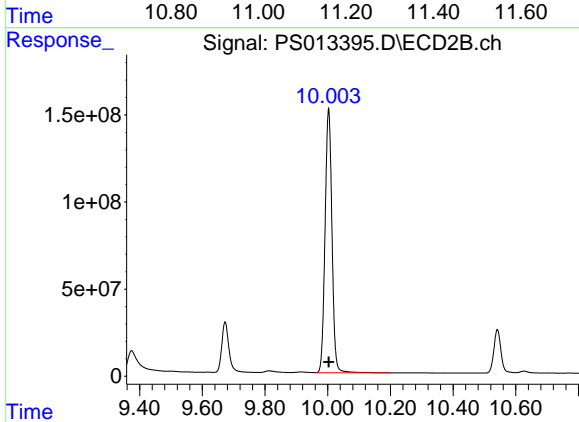
Instrument :
 ECD_S
 ClientSampleId :



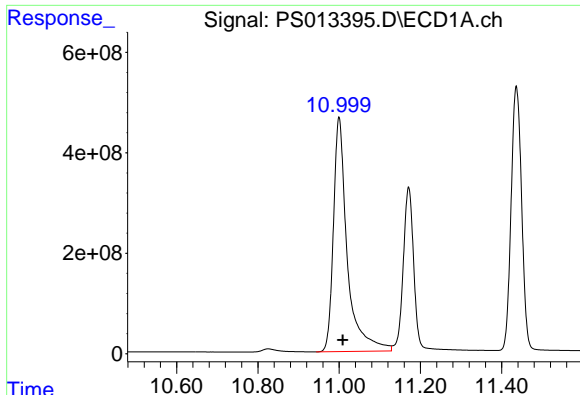
#13 2,4-DB
 R.T.: 9.673 min
 Delta R.T.: -0.005 min
 Response: 455475482
 Conc: 1539.18 ng/ml



#14 DINOSEB
 R.T.: 11.171 min
 Delta R.T.: 0.000 min
 Response: 5843867937
 Conc: 1400.32 ng/ml



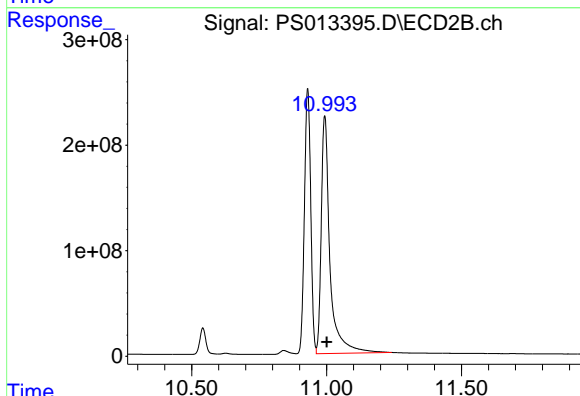
#14 DINOSEB
 R.T.: 10.003 min
 Delta R.T.: -0.001 min
 Response: 2312440577
 Conc: 1402.58 ng/ml



#15 Picloram

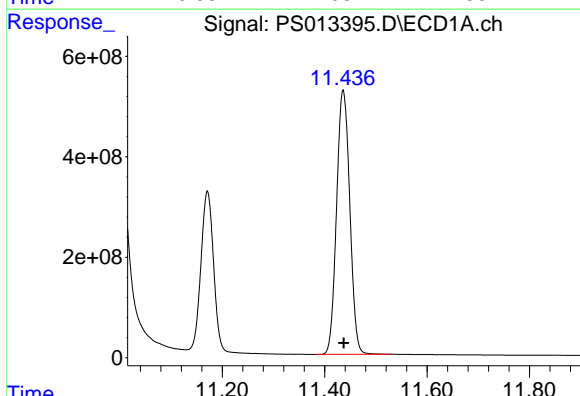
R.T.: 11.000 min
 Delta R.T.: -0.009 min
 Response: 11048397681
 Conc: 1537.79 ng/ml

Instrument :
 ECD_S
 ClientSampleId :



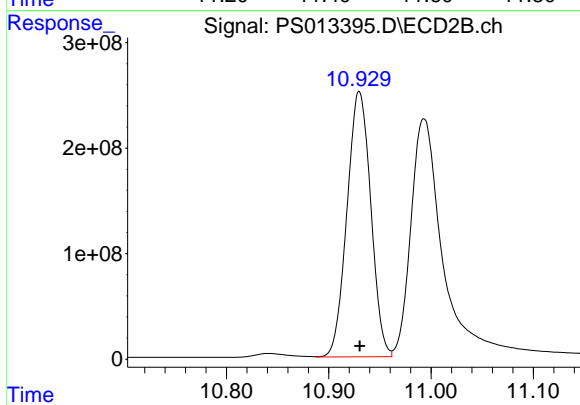
#15 Picloram

R.T.: 10.993 min
 Delta R.T.: -0.008 min
 Response: 5075260252
 Conc: 1435.92 ng/ml



#16 DCPA

R.T.: 11.436 min
 Delta R.T.: -0.001 min
 Response: 9419182736
 Conc: 1399.74 ng/ml



#16 DCPA

R.T.: 10.930 min
 Delta R.T.: 0.000 min
 Response: 4069064253
 Conc: 1351.13 ng/ml