

Data Path : Z:\pestpcbsrv\HPCHEM1\ECD\_S\Data\PS120424\  
 Data File : PS028691.D  
 Signal(s) : Signal #1: ECD1A.ch Signal #2: ECD2B.ch  
 Acq On : 04 Dec 2024 10:55  
 Operator : AR\AJ  
 Sample : PB165340BS  
 Misc :  
 ALS Vial : 4 Sample Multiplier: 1

Instrument :  
 ECD\_S  
 ClientSampleId :  
 PB165340BS

Integration File signal 1: autoint1.e  
 Integration File signal 2: autoint2.e  
 Quant Time: Dec 04 23:28:32 2024  
 Quant Method : Z:\pestpcbsrv\HPCHEM1\ECD\_S\Method\PS112624.M  
 Quant Title : 8080.M  
 QLast Update : Tue Nov 26 14:44:30 2024  
 Response via : Initial Calibration  
 Integrator: ChemStation

Volume Inj. : 1 µl  
 Signal #1 Phase : ZB-MR1 Signal #2 Phase: ZB-MR2  
 Signal #1 Info : 30M x 0.32mm x0.5 Signal #2 Info : 30M x 0.32mm x 0.25µm

Compound	RT#1	RT#2	Resp#1	Resp#2	ng/ml	ng/ml
-----						
System Monitoring Compounds						
4) S 2,4-DCAA	7.229	7.718	1714.2E6	692.9E6	639.050	514.392
Target Compounds						
1) T Dalapon	2.631	2.686	1039.5E6	1072.1E6	358.221	490.944 #
2) T 3,5-DICHL...	6.402	6.675	2076.3E6	884.7E6	542.175	450.428
3) T 4-Nitroph...	7.028	7.245	713.1E6	352.9E6	414.816	386.915
5) T DICAMBA	7.416	7.917	5648.7E6	2876.4E6	492.027	467.235
6) T MCPP	7.598	8.020	344.4E6	186.6E6	47.188	43.322
7) T MCPA	7.747	8.263	498.4E6	258.1E6	48.201	41.588
8) T DICHLORPROP	8.124	8.632	1515.9E6	730.4E6	486.926	456.881
9) T 2,4-D	8.354	8.962	1880.7E6	851.7E6	557.707	503.658
10) T Pentachlo...	8.652	9.489	24970.1E6	11885.1E6	566.310	519.205
11) T 2,4,5-TP ...	9.231	9.866	9556.6E6	5055.1E6	522.794	529.749
12) T 2,4,5-T	9.523	10.285	9528.1E6	4542.3E6	508.017	487.876
13) T 2,4-DB	10.098	10.852	1378.7E6	541.0E6	389.273	471.769
14) T DINOSEB	11.307	11.230	6229.2E6	2386.1E6	414.552	380.188
15) T Picloram	11.114	12.322	12545.7E6	5042.9E6	421.892	391.209
16) T DCPA	11.598	12.273	10909.8E6	5787.5E6	396.789	521.526 #
-----						

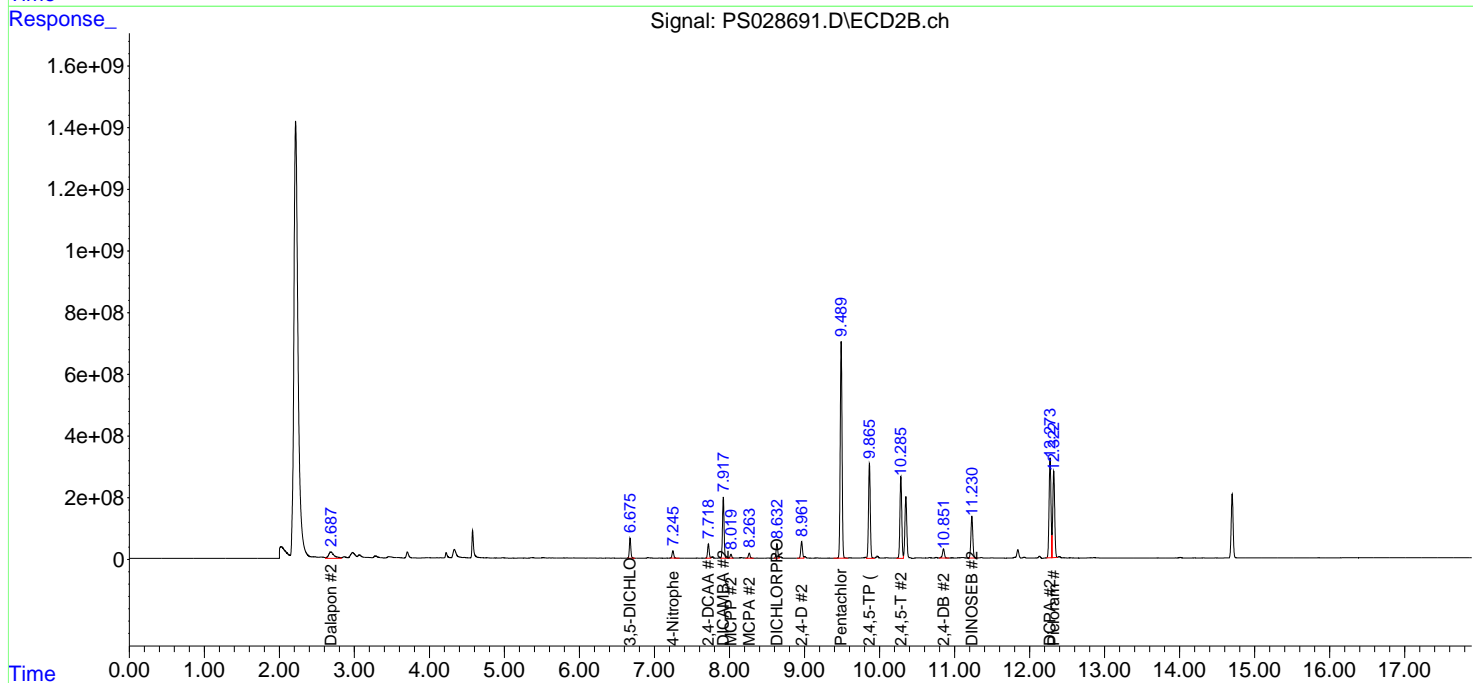
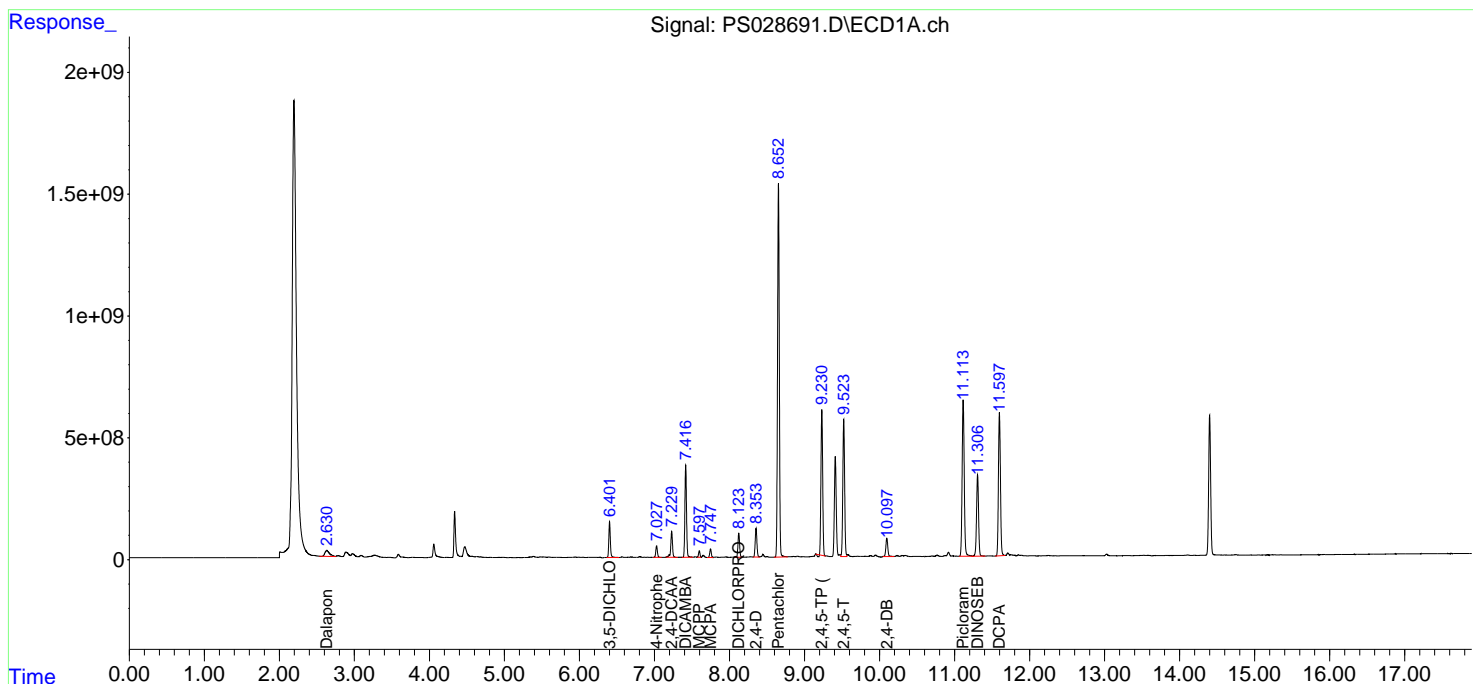
(f)=RT Delta > 1/2 Window (#)=Amounts differ by > 25% (m)=manual int.

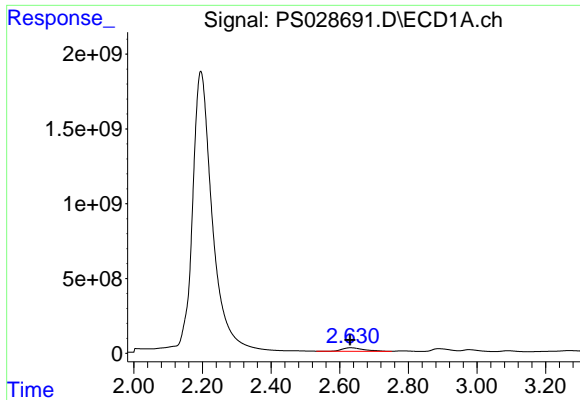
Data Path : Z:\pestpcbsrv\HPCHEM1\ECD\_S\Data\PS120424\  
 Data File : PS028691.D  
 Signal(s) : Signal #1: ECD1A.ch Signal #2: ECD2B.ch  
 Acq On : 04 Dec 2024 10:55  
 Operator : AR\AJ  
 Sample : PB165340BS  
 Misc :  
 ALS Vial : 4 Sample Multiplier: 1

Instrument :  
 ECD\_S  
 ClientSampleId :  
 PB165340BS

Integration File signal 1: autoint1.e  
 Integration File signal 2: autoint2.e  
 Quant Time: Dec 04 23:28:32 2024  
 Quant Method : Z:\pestpcbsrv\HPCHEM1\ECD\_S\Method\PS112624.M  
 Quant Title : 8080.M  
 QLast Update : Tue Nov 26 14:44:30 2024  
 Response via : Initial Calibration  
 Integrator: ChemStation

Volume Inj. : 1 µl  
 Signal #1 Phase : ZB-MR1 Signal #2 Phase: ZB-MR2  
 Signal #1 Info : 30M x 0.32mm x0.5 Signal #2 Info : 30M x 0.32mm x 0.25µm

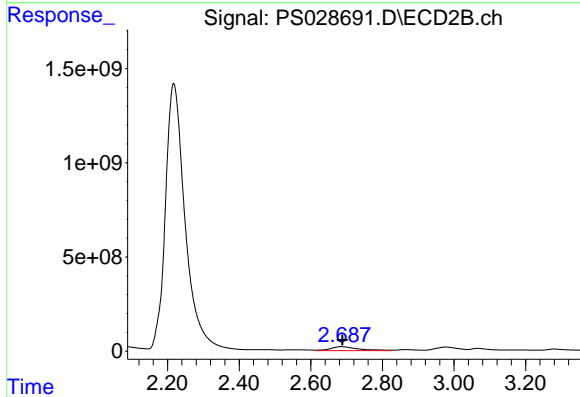




#1 Dalapon

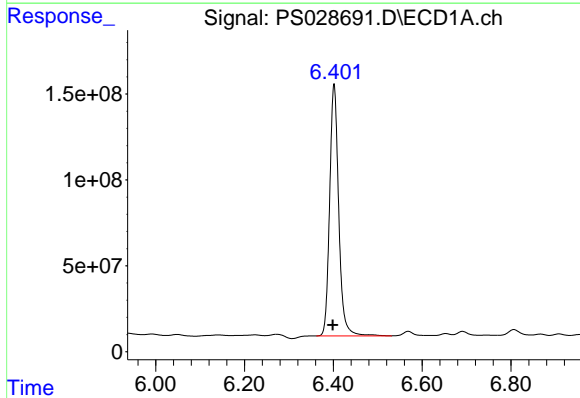
R.T.: 2.631 min  
 Delta R.T.: 0.001 min  
 Response: 1039502298  
 Conc: 358.22 ng/ml

Instrument :  
 ECD\_S  
 ClientSampleId :  
 PB165340BS



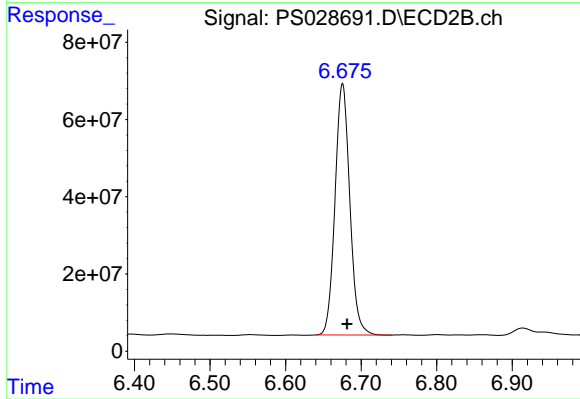
#1 Dalapon

R.T.: 2.686 min  
 Delta R.T.: -0.002 min  
 Response: 1072129153  
 Conc: 490.94 ng/ml



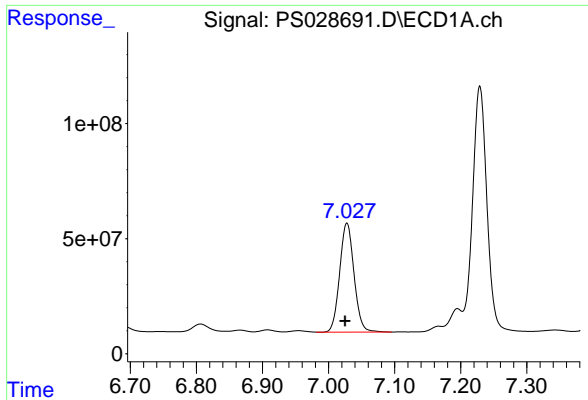
#2 3,5-DICHLOROBENZOIC ACID

R.T.: 6.402 min  
 Delta R.T.: 0.003 min  
 Response: 2076343010  
 Conc: 542.18 ng/ml



#2 3,5-DICHLOROBENZOIC ACID

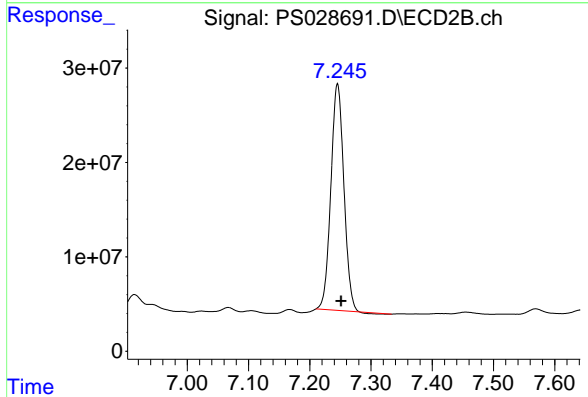
R.T.: 6.675 min  
 Delta R.T.: -0.006 min  
 Response: 884680892  
 Conc: 450.43 ng/ml



#3 4-Nitrophenol

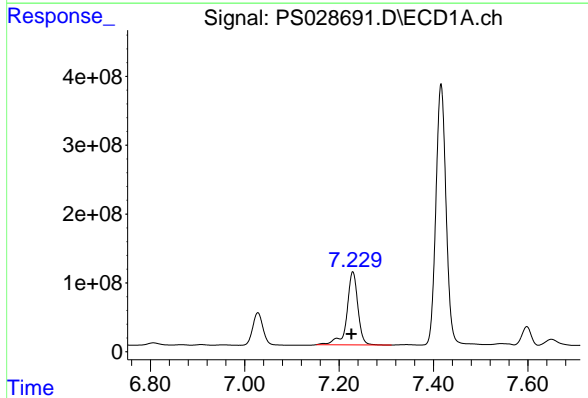
R.T.: 7.028 min  
Delta R.T.: 0.003 min  
Response: 713057929  
Conc: 414.82 ng/ml

Instrument :  
ECD\_S  
ClientSampleId :  
PB165340BS



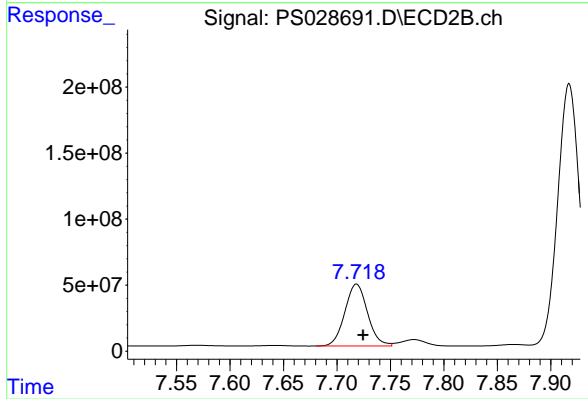
#3 4-Nitrophenol

R.T.: 7.245 min  
Delta R.T.: -0.006 min  
Response: 352918176  
Conc: 386.91 ng/ml



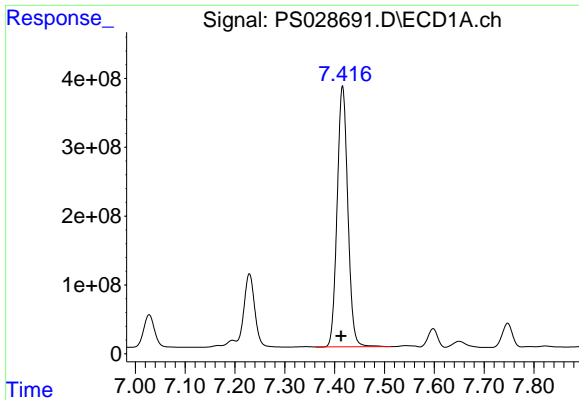
#4 2,4-DCAA

R.T.: 7.229 min  
Delta R.T.: 0.003 min  
Response: 1714151547  
Conc: 639.05 ng/ml



#4 2,4-DCAA

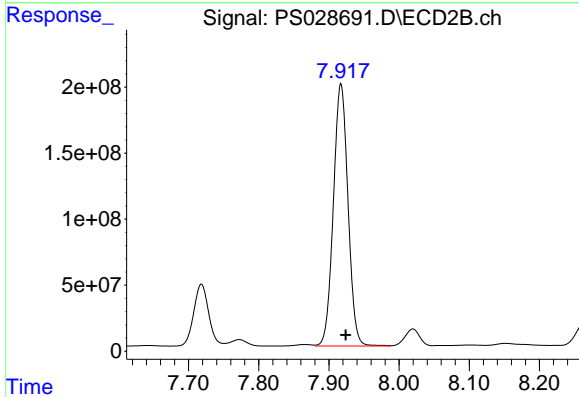
R.T.: 7.718 min  
Delta R.T.: -0.006 min  
Response: 692900580  
Conc: 514.39 ng/ml



#5 DICAMBA

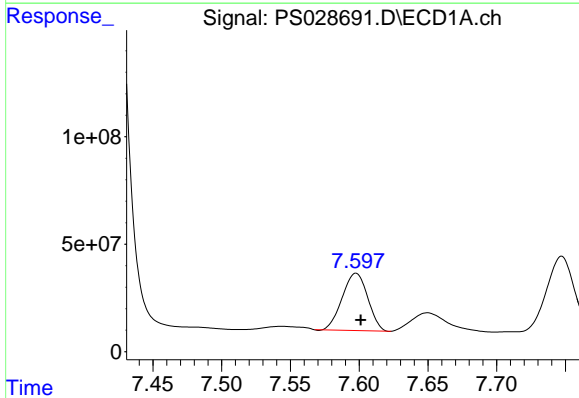
R.T.: 7.416 min  
 Delta R.T.: 0.003 min  
 Response: 5648732518  
 Conc: 492.03 ng/ml

Instrument :  
 ECD\_S  
 ClientSampleId :  
 PB165340BS



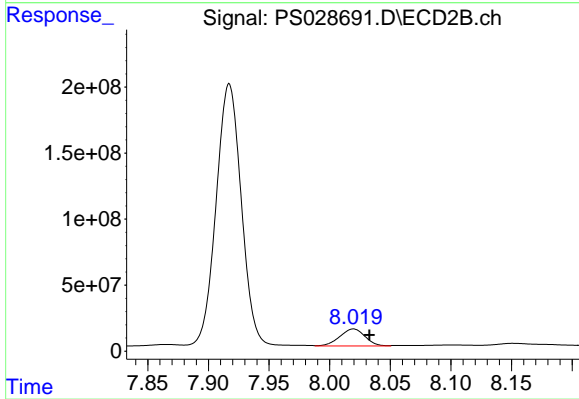
#5 DICAMBA

R.T.: 7.917 min  
 Delta R.T.: -0.007 min  
 Response: 2876400590  
 Conc: 467.24 ng/ml



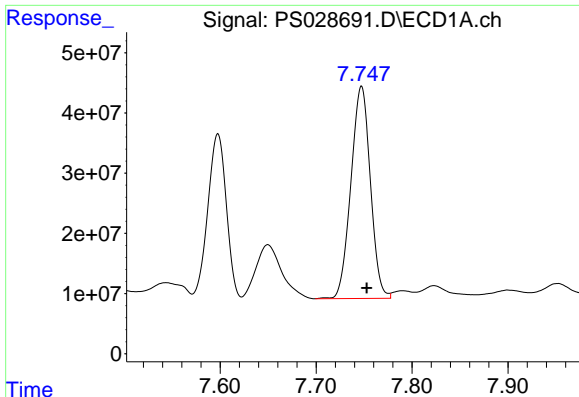
#6 MCP

R.T.: 7.598 min  
 Delta R.T.: -0.004 min  
 Response: 344357394  
 Conc: 47.19 ug/ml



#6 MCP

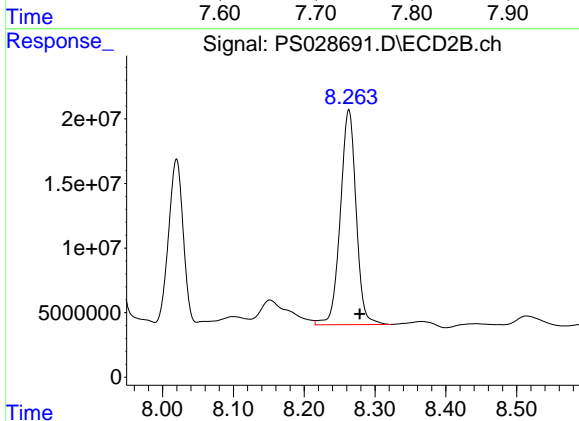
R.T.: 8.020 min  
 Delta R.T.: -0.013 min  
 Response: 186612265  
 Conc: 43.32 ug/ml



#7 MCPA

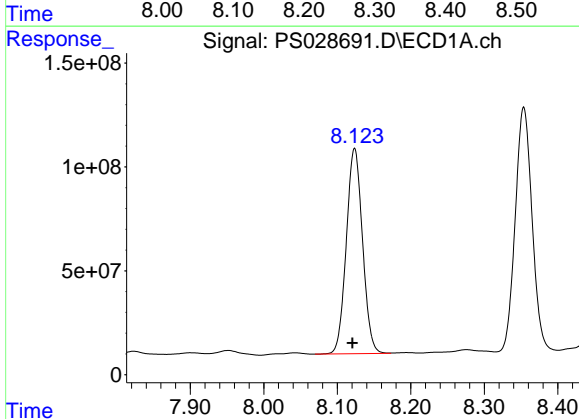
R.T.: 7.747 min  
Delta R.T.: -0.006 min  
Response: 498354030  
Conc: 48.20 ug/ml

Instrument :  
ECD\_S  
ClientSampleId :  
PB165340BS



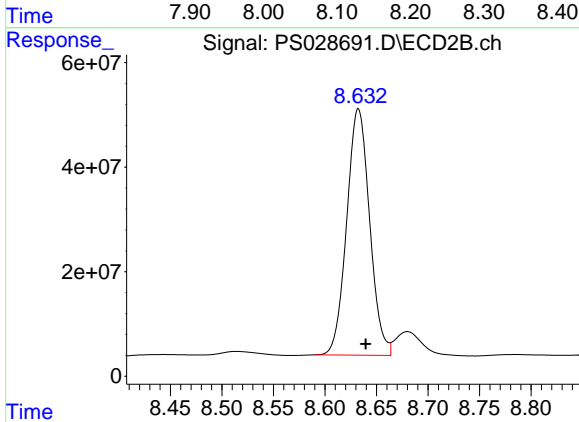
#7 MCPA

R.T.: 8.263 min  
Delta R.T.: -0.015 min  
Response: 258098617  
Conc: 41.59 ug/ml



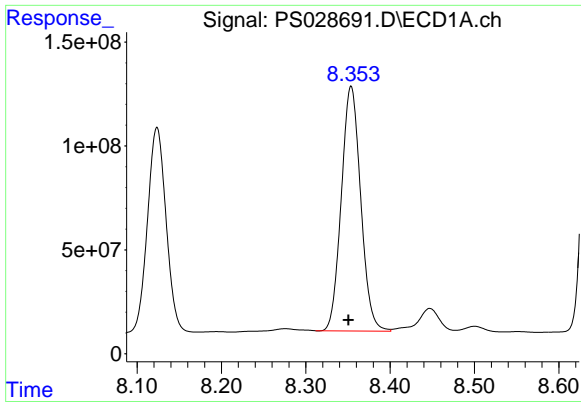
#8 DICHLORPROP

R.T.: 8.124 min  
Delta R.T.: 0.003 min  
Response: 1515851803  
Conc: 486.93 ng/ml



#8 DICHLORPROP

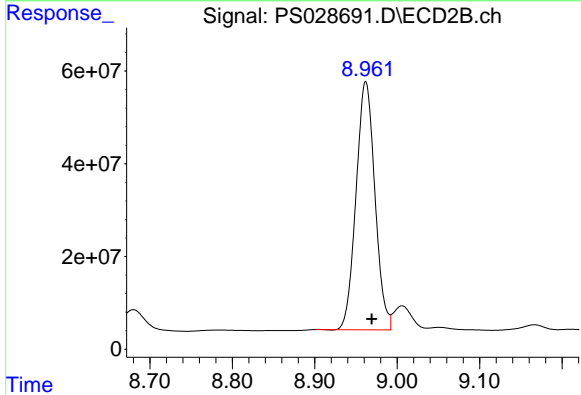
R.T.: 8.632 min  
Delta R.T.: -0.007 min  
Response: 730378804  
Conc: 456.88 ng/ml



#9 2,4-D

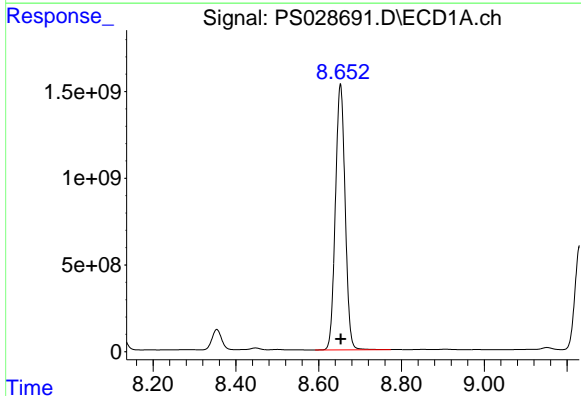
R.T.: 8.354 min  
 Delta R.T.: 0.003 min  
 Response: 1880671721  
 Conc: 557.71 ng/ml

Instrument :  
 ECD\_S  
 ClientSampleId :  
 PB165340BS



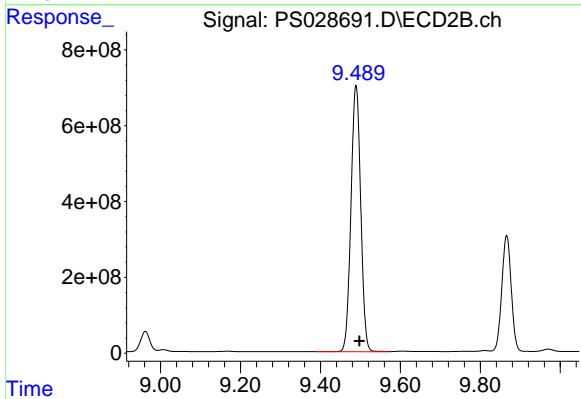
#9 2,4-D

R.T.: 8.962 min  
 Delta R.T.: -0.007 min  
 Response: 851670083  
 Conc: 503.66 ng/ml



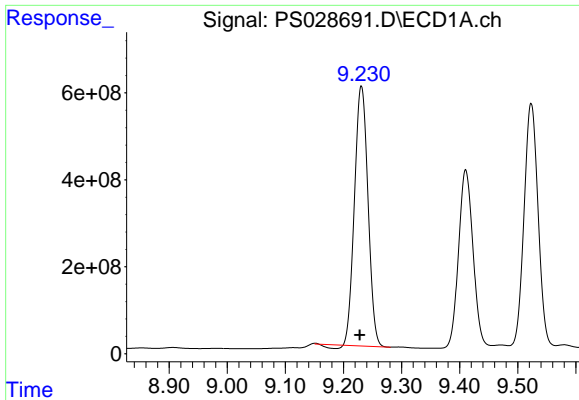
#10 Pentachlorophenol

R.T.: 8.652 min  
 Delta R.T.: -0.001 min  
 Response: 24970102931  
 Conc: 566.31 ng/ml



#10 Pentachlorophenol

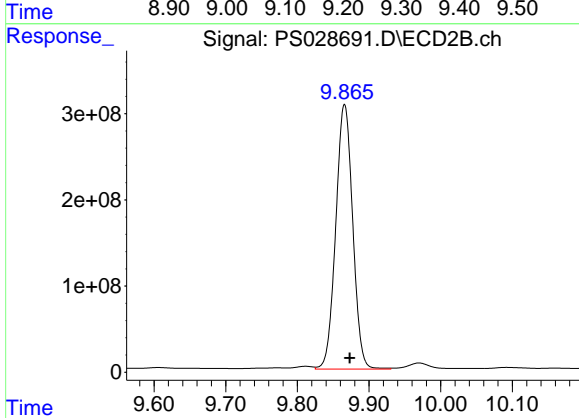
R.T.: 9.489 min  
 Delta R.T.: -0.008 min  
 Response: 11885066102  
 Conc: 519.21 ng/ml



#11 2,4,5-TP (SILVEX)

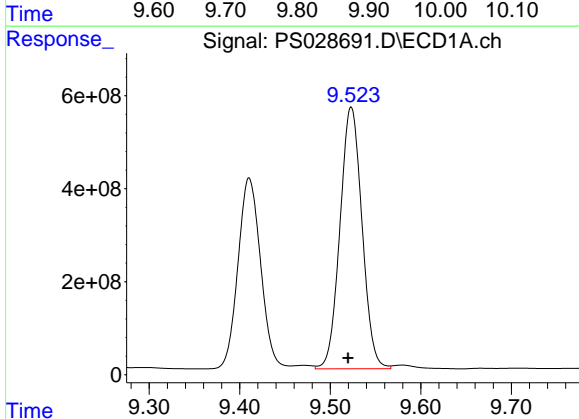
R.T.: 9.231 min  
 Delta R.T.: 0.003 min  
 Response: 9556563154  
 Conc: 522.79 ng/ml

Instrument :  
 ECD\_S  
 ClientSampleId :  
 PB165340BS



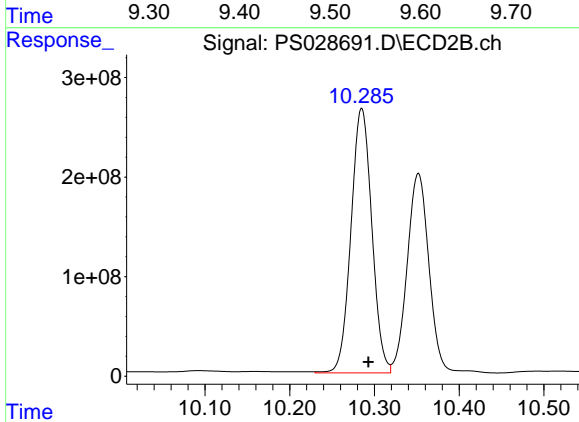
#11 2,4,5-TP (SILVEX)

R.T.: 9.866 min  
 Delta R.T.: -0.007 min  
 Response: 5055140257  
 Conc: 529.75 ng/ml



#12 2,4,5-T

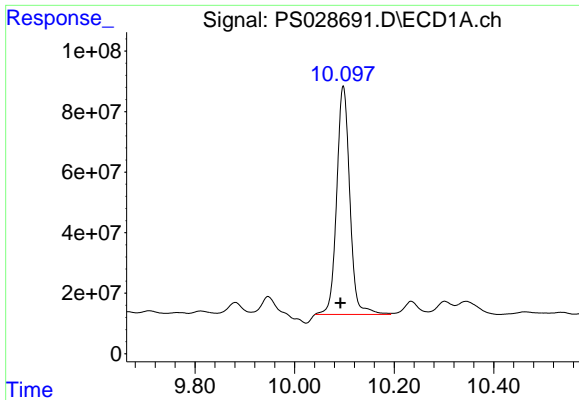
R.T.: 9.523 min  
 Delta R.T.: 0.004 min  
 Response: 9528117111  
 Conc: 508.02 ng/ml



#12 2,4,5-T

R.T.: 10.285 min  
 Delta R.T.: -0.008 min  
 Response: 4542267287  
 Conc: 487.88 ng/ml

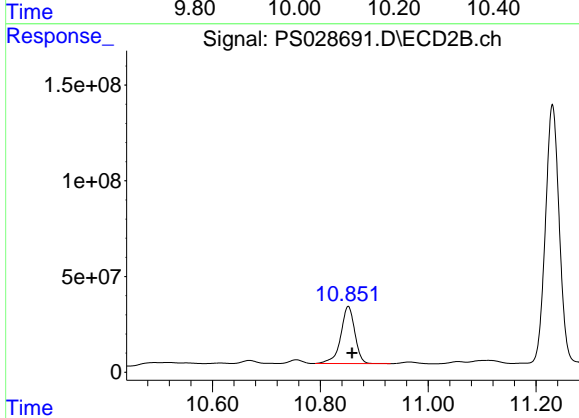




#13 2,4-DB

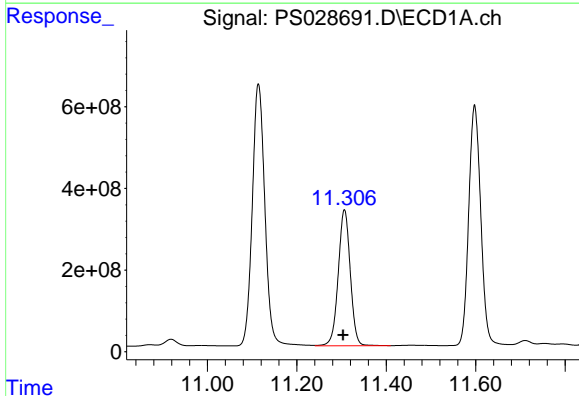
R.T.: 10.098 min  
 Delta R.T.: 0.006 min  
 Response: 1378690686  
 Conc: 389.27 ng/ml

Instrument :  
 ECD\_S  
 ClientSampleId :  
 PB165340BS



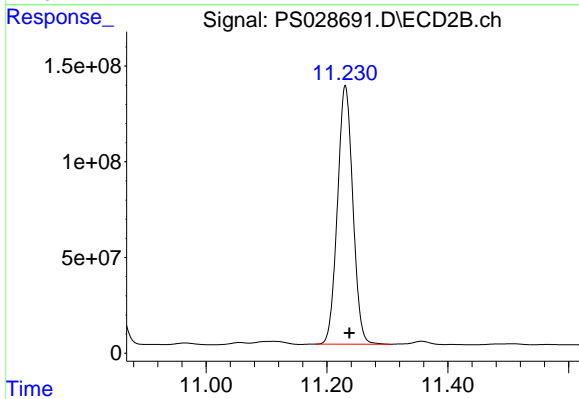
#13 2,4-DB

R.T.: 10.852 min  
 Delta R.T.: -0.007 min  
 Response: 540987074  
 Conc: 471.77 ng/ml



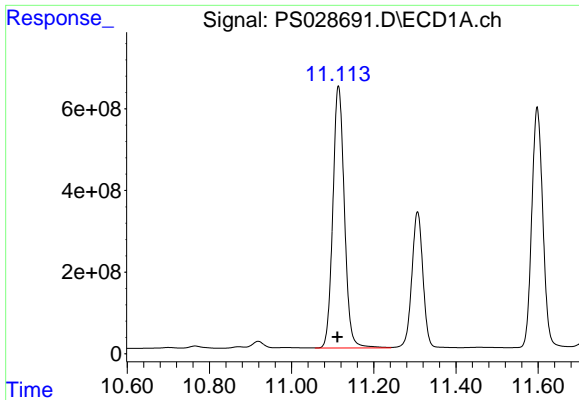
#14 DINOSEB

R.T.: 11.307 min  
 Delta R.T.: 0.003 min  
 Response: 6229152637  
 Conc: 414.55 ng/ml



#14 DINOSEB

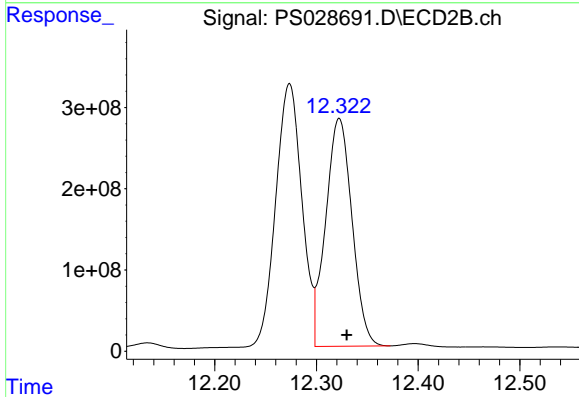
R.T.: 11.230 min  
 Delta R.T.: -0.007 min  
 Response: 2386065022  
 Conc: 380.19 ng/ml



#15 Picloram

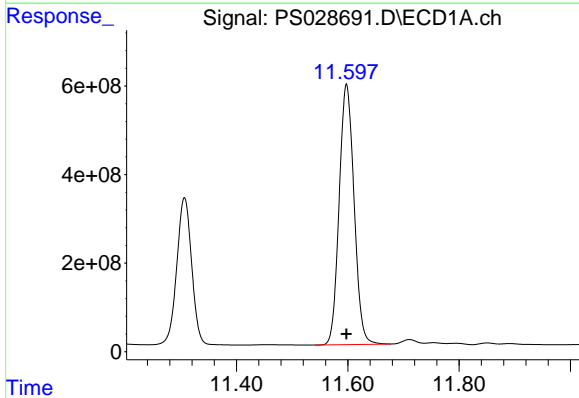
R.T.: 11.114 min  
 Delta R.T.: 0.003 min  
 Response: 12545713753  
 Conc: 421.89 ng/ml

Instrument :  
 ECD\_S  
 ClientSampleId :  
 PB165340BS



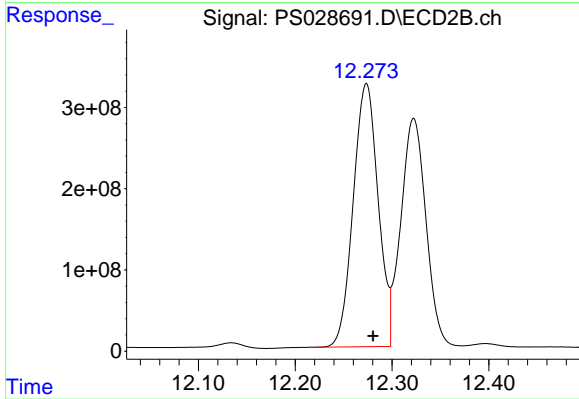
#15 Picloram

R.T.: 12.322 min  
 Delta R.T.: -0.007 min  
 Response: 5042948510  
 Conc: 391.21 ng/ml



#16 DCPA

R.T.: 11.598 min  
 Delta R.T.: 0.000 min  
 Response: 10909765808  
 Conc: 396.79 ng/ml



#16 DCPA

R.T.: 12.273 min  
 Delta R.T.: -0.007 min  
 Response: 5787490355  
 Conc: 521.53 ng/ml