

Data Path : Z:\pestpcbsrv\HPCHEM1\ECD_S\Data\PS120523\
 Data File : PS024997.D
 Signal(s) : Signal #1: ECD1A.ch Signal #2: ECD2B.ch
 Acq On : 05 Dec 2023 12:19
 Operator : AR\AJ
 Sample : 05599-01
 Misc :
 ALS Vial : 6 Sample Multiplier: 1

Instrument :
 ECD_S
 ClientSampleId :
 LKWD-BACKFILL-01

Integration File signal 1: autoint1.e
 Integration File signal 2: autoint2.e
 Quant Time: Dec 05 23:28:11 2023
 Quant Method : Z:\pestpcbsrv\HPCHEM1\ECD_S\Method\PS112823.M
 Quant Title : 8080.M
 QLast Update : Tue Nov 28 16:40:06 2023
 Response via : Initial Calibration
 Integrator: ChemStation

Volume Inj. : 2 µl
 Signal #1 Phase : Rtx-CLPesticides Signal #2 Phase: Rtx-CLPesticides2
 Signal #1 Info : 30M x 0.32mm x0.5 Signal #2 Info : 30M x 0.32mm x 0.25µm

| Compound | RT#1 | RT#2 | Resp#1 | Resp#2 | ng/ml | ng/ml |
|-----------------------------|--------|--------|----------|----------|---------|----------|
| ----- | | | | | | |
| System Monitoring Compounds | | | | | | |
| 4) S 2,4-DCAA | 6.355 | 6.771 | 769.1E6 | 221.2E6 | 343.694 | 305.279 |
| Target Compounds | | | | | | |
| 1) T Dalapon | 2.446 | 2.504 | 43478250 | 13306585 | 15.077 | 11.601 |
| 2) T 3,5-DICHL... | 5.696 | 5.961 | 1478816 | 1082208 | <MDL | <MDL # |
| 3) T 4-Nitroph... | 6.197 | 6.411 | 39366057 | 3912660 | 26.732 | 8.034 # |
| 5) T DICAMBA | 6.498 | 6.930 | -7021946 | 2675923 | N.D. | <MDL |
| 6) T MCPP | 6.672 | 7.039 | 56487451 | 352535 | 8.247 | <MDL # |
| 7) T MCPA | 6.802 | 7.231 | 97295938 | 14427712 | 10.220 | 4.386 # |
| 8) T DICHLORPROP | 7.076 | 7.554 | 19117540 | 19783533 | 7.452 | 25.149 # |
| 9) T 2,4-D | 7.277 | 7.853 | 13999858 | 5774656 | 4.609 | 5.929 # |
| 10) T Pentachlo... | 7.510 | 8.250 | 46331726 | 10941106 | 1.321 | <MDL # |
| 12) T 2,4,5-T | 8.299 | 8.981 | 60630082 | 7498866 | 4.197 | 1.738 # |
| 13) T 2,4-DB | 8.806 | 9.487 | 239.1E6 | 22754075 | 102.906 | 41.112 # |
| 14) T DINOSEB | 9.844 | 9.808 | 8321722 | 11855954 | <MDL | 3.867 # |
| 15) T Picloram | 9.676 | 10.761 | 72973282 | 22978229 | 3.745 | 3.511 |
| 16) T DCPA | 10.110 | 10.761 | 106.6E6 | 22978229 | 5.682 | 4.240 # |

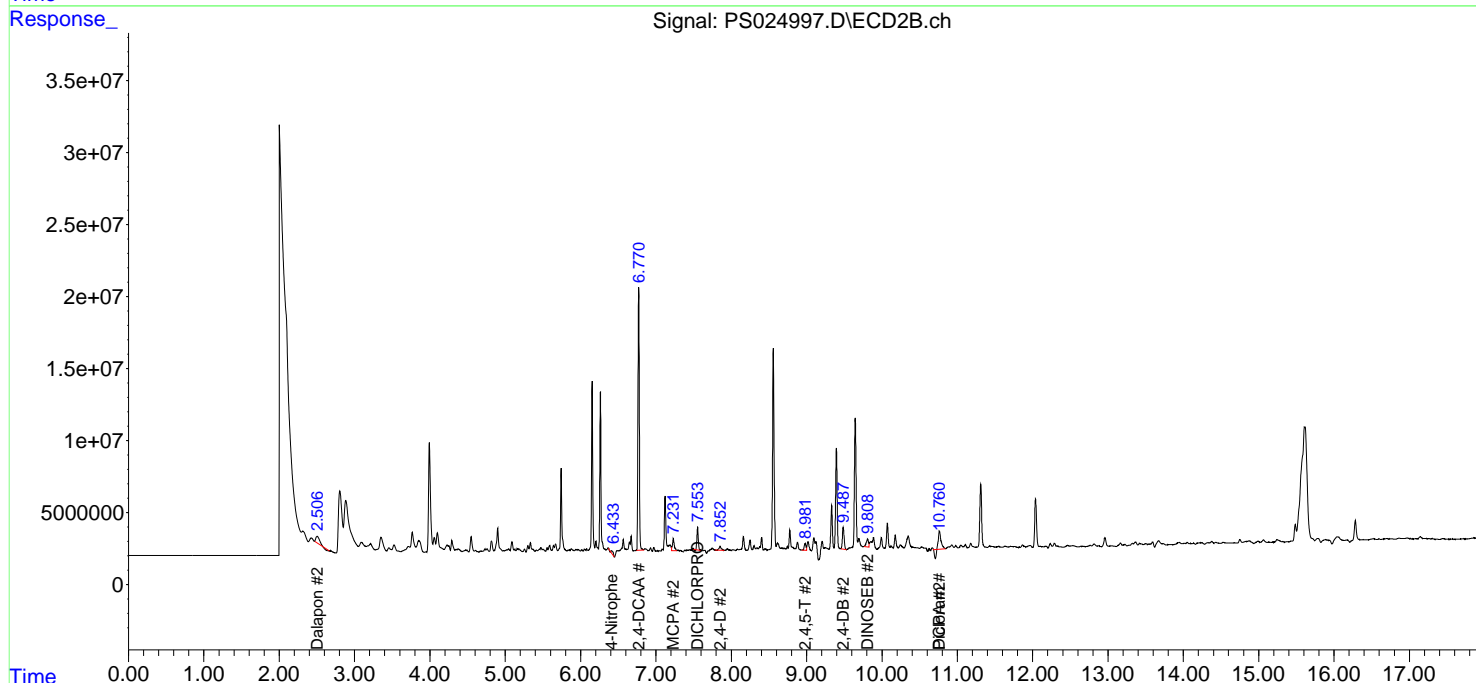
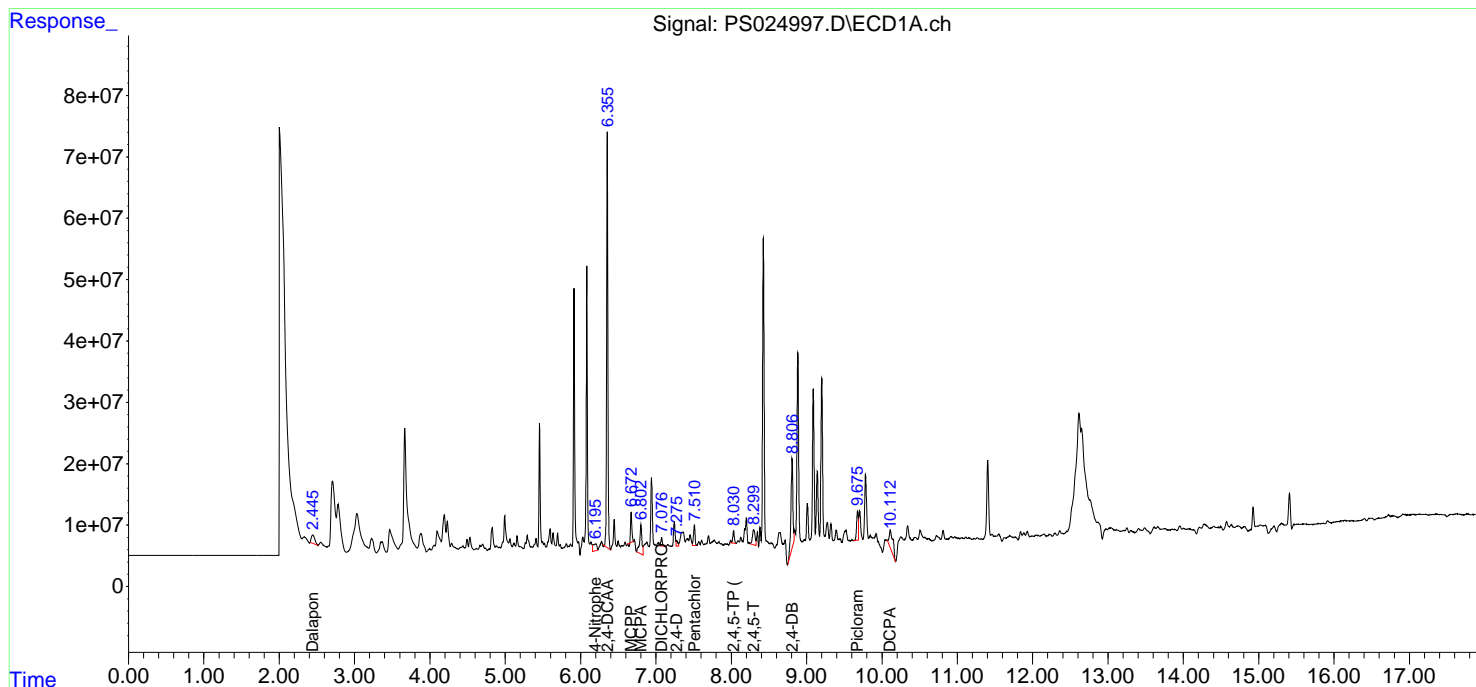
(f)=RT Delta > 1/2 Window (#)=Amounts differ by > 25% (m)=manual int.

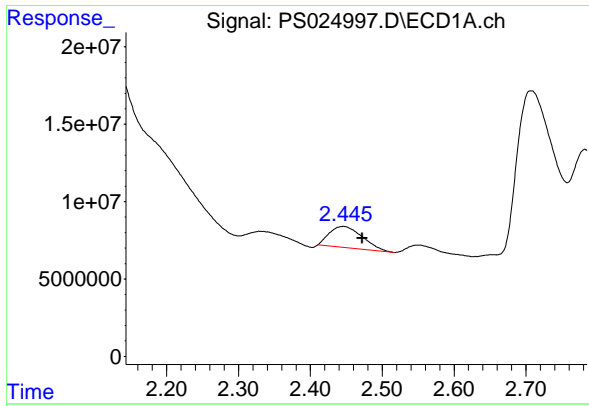
Data Path : Z:\pestpcbsrv\HPCHEM1\ECD_S\Data\PS120523\
 Data File : PS024997.D
 Signal(s) : Signal #1: ECD1A.ch Signal #2: ECD2B.ch
 Acq On : 05 Dec 2023 12:19
 Operator : AR\AJ
 Sample : 05599-01
 Misc :
 ALS Vial : 6 Sample Multiplier: 1

Instrument :
 ECD_S
 ClientSampleId :
 LKWD-BACKFILL-01

Integration File signal 1: autoint1.e
 Integration File signal 2: autoint2.e
 Quant Time: Dec 05 23:28:11 2023
 Quant Method : Z:\pestpcbsrv\HPCHEM1\ECD_S\Method\PS112823.M
 Quant Title : 8080.M
 QLast Update : Tue Nov 28 16:40:06 2023
 Response via : Initial Calibration
 Integrator: ChemStation

Volume Inj. : 2 µl
 Signal #1 Phase : Rtx-CLPesticides Signal #2 Phase: Rtx-CLPesticides2
 Signal #1 Info : 30M x 0.32mm x 0.5 Signal #2 Info : 30M x 0.32mm x 0.25µm

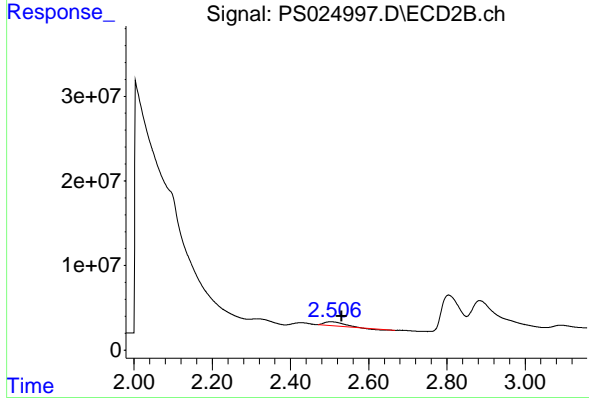




#1 Dalapon

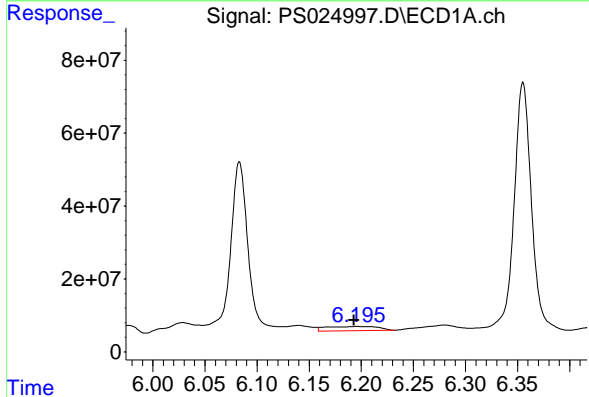
R.T.: 2.446 min
 Delta R.T.: -0.026 min
 Response: 43478250
 Conc: 15.08 ng/ml

Instrument : ECD_S
 ClientSampleId : LKWD-BACKFILL-01



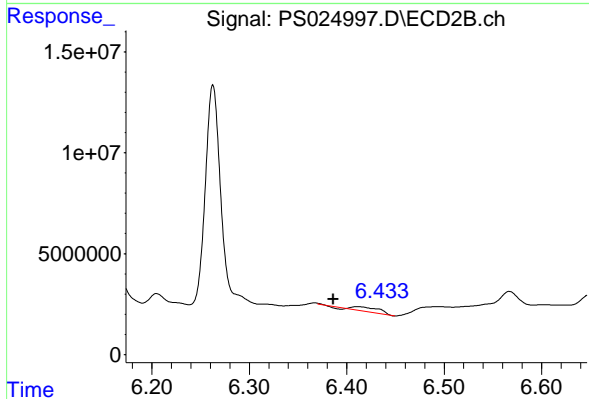
#1 Dalapon

R.T.: 2.504 min
 Delta R.T.: -0.027 min
 Response: 13306585
 Conc: 11.60 ng/ml



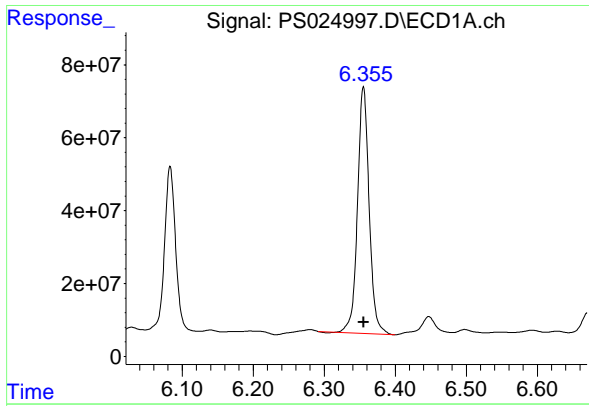
#3 4-Nitrophenol

R.T.: 6.197 min
 Delta R.T.: 0.004 min
 Response: 39366057
 Conc: 26.73 ng/ml



#3 4-Nitrophenol

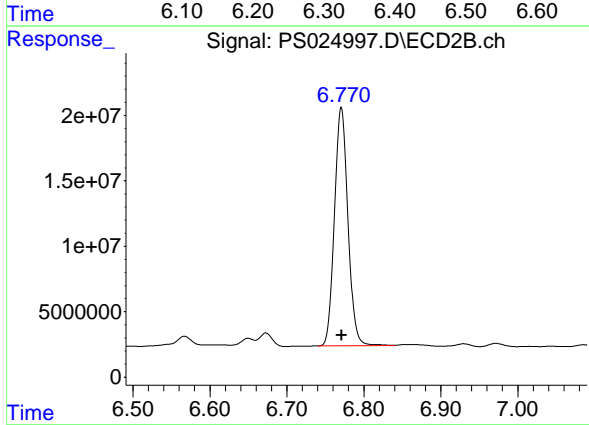
R.T.: 6.411 min
 Delta R.T.: 0.025 min
 Response: 3912660
 Conc: 8.03 ng/ml



#4 2,4-DCAA

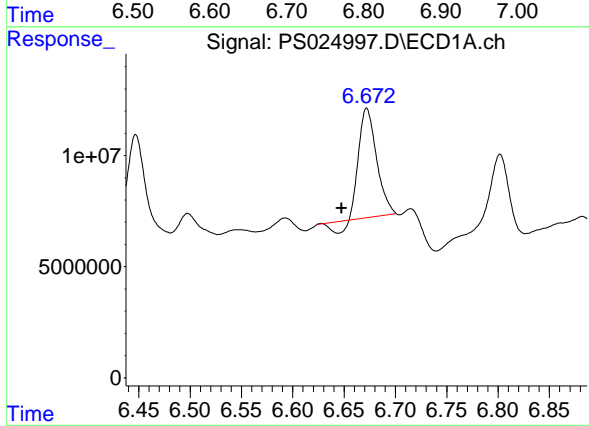
R.T.: 6.355 min
 Delta R.T.: 0.000 min
 Response: 769133767
 Conc: 343.69 ng/ml

Instrument :
 ECD_S
 ClientSampleId :
 LKWD-BACKFILL-01



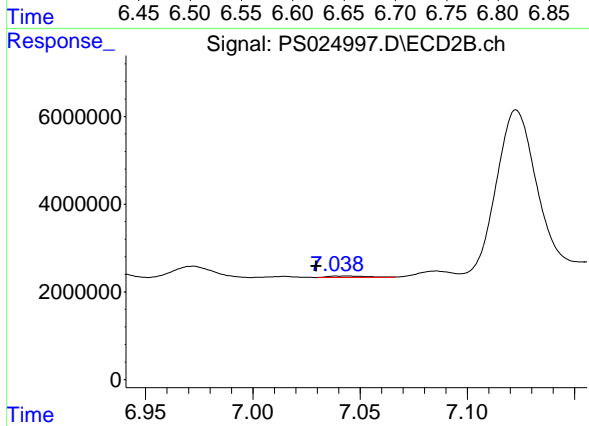
#4 2,4-DCAA

R.T.: 6.771 min
 Delta R.T.: 0.000 min
 Response: 221191266
 Conc: 305.28 ng/ml



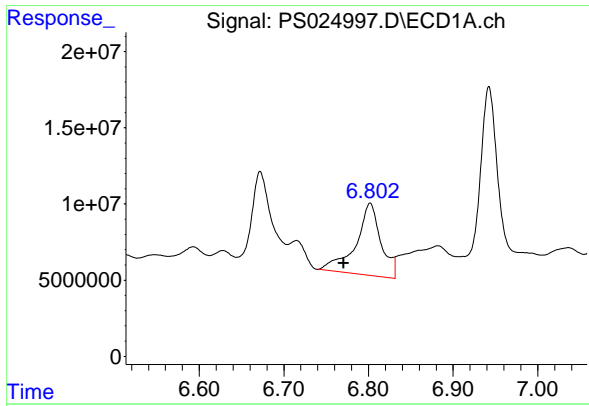
#6 MCPP

R.T.: 6.672 min
 Delta R.T.: 0.024 min
 Response: 56487451
 Conc: 8.25 ug/ml



#6 MCPP

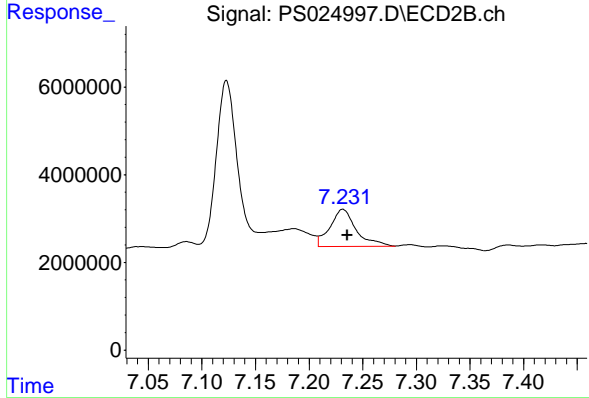
R.T.: 7.039 min
 Delta R.T.: 0.010 min
 Response: 352535
 Conc: N.D.



#7 MCPA

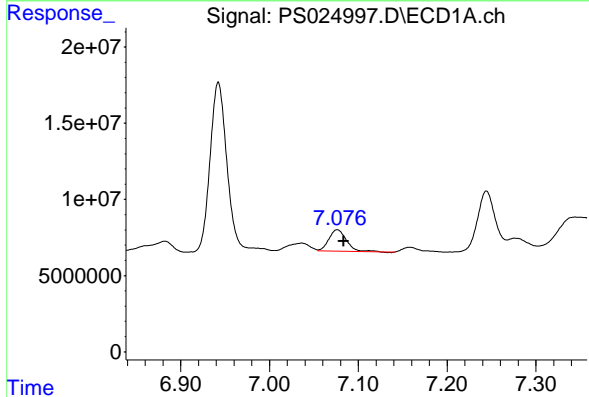
R.T.: 6.802 min
 Delta R.T.: 0.031 min
 Response: 97295938
 Conc: 10.22 ug/ml

Instrument :
 ECD_S
 ClientSampleId :
 LKWD-BACKFILL-01



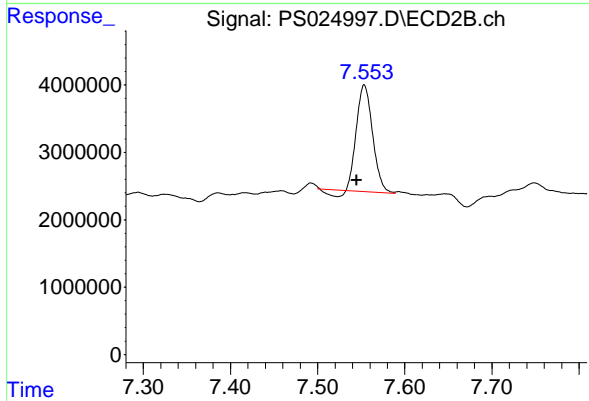
#7 MCPA

R.T.: 7.231 min
 Delta R.T.: -0.004 min
 Response: 14427712
 Conc: 4.39 ug/ml



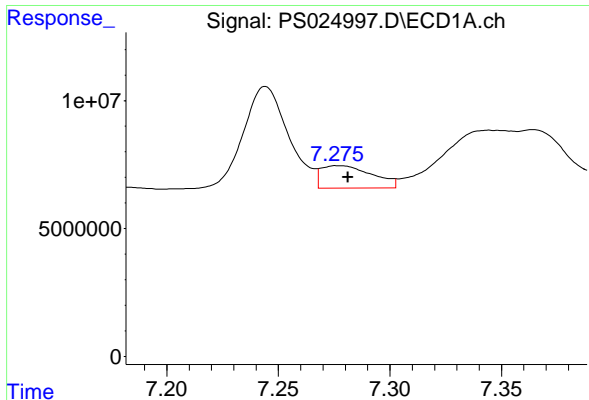
#8 DICHLORPROP

R.T.: 7.076 min
 Delta R.T.: -0.007 min
 Response: 19117540
 Conc: 7.45 ng/ml



#8 DICHLORPROP

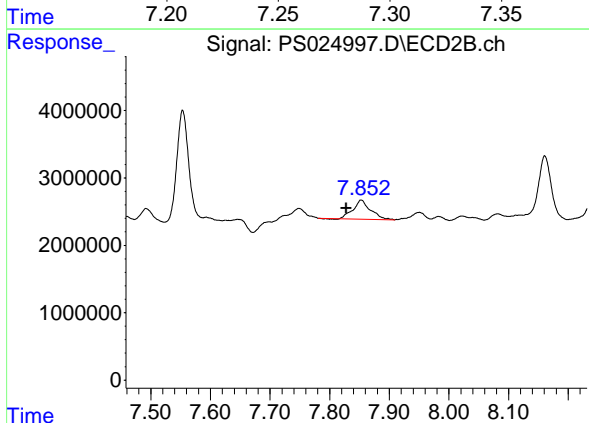
R.T.: 7.554 min
 Delta R.T.: 0.008 min
 Response: 19783533
 Conc: 25.15 ng/ml



#9 2,4-D

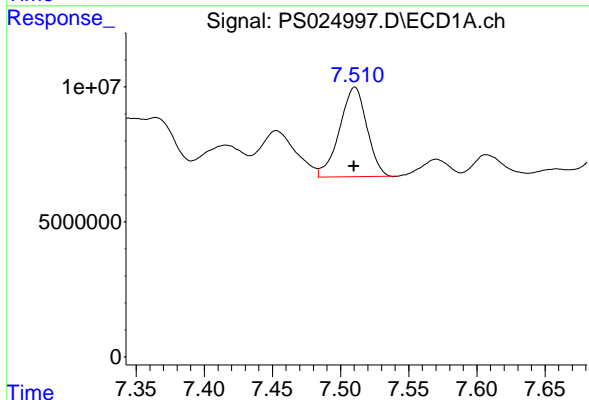
R.T.: 7.277 min
 Delta R.T.: -0.004 min
 Response: 13999858
 Conc: 4.61 ng/ml

Instrument : ECD_S
 ClientSampleId : LKWD-BACKFILL-01



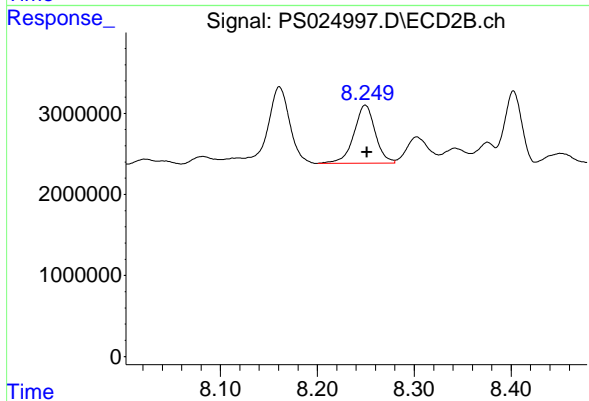
#9 2,4-D

R.T.: 7.853 min
 Delta R.T.: 0.025 min
 Response: 5774656
 Conc: 5.93 ng/ml



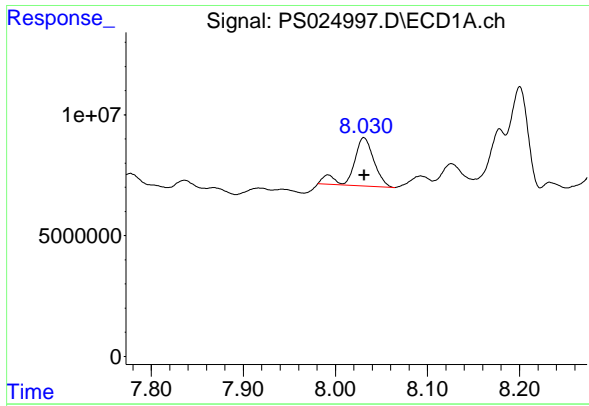
#10 Pentachlorophenol

R.T.: 7.510 min
 Delta R.T.: 0.000 min
 Response: 46331726
 Conc: 1.32 ng/ml



#10 Pentachlorophenol

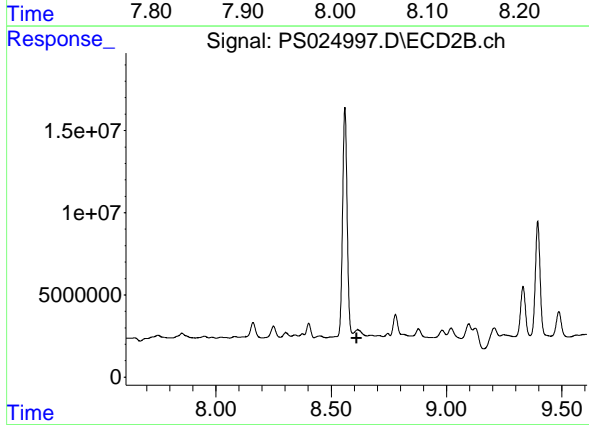
R.T.: 8.250 min
 Delta R.T.: -0.002 min
 Response: 10941106
 Conc: N.D.



#11 2,4,5-TP (SILVEX)

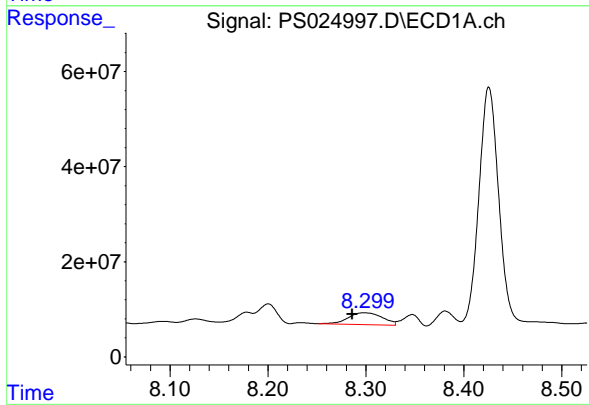
R.T.: 8.031 min
 Delta R.T.: 0.000 min
 Response: 31318310
 Conc: 2.06 ng/ml

Instrument : ECD_S
 ClientSampleId : LKWD-BACKFILL-01



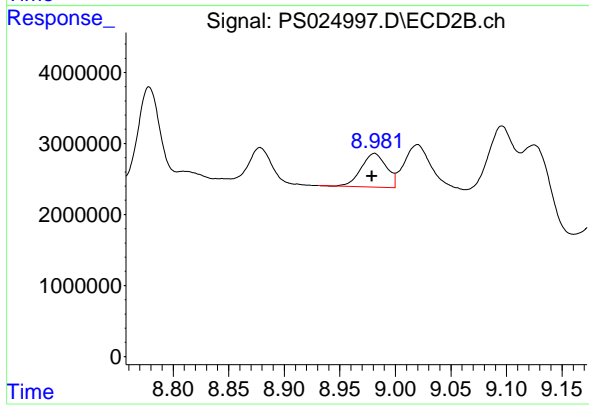
#11 2,4,5-TP (SILVEX)

R.T.: 8.615 min
 Delta R.T.: 0.005 min
 Response: -80939860
 Conc: N.D.



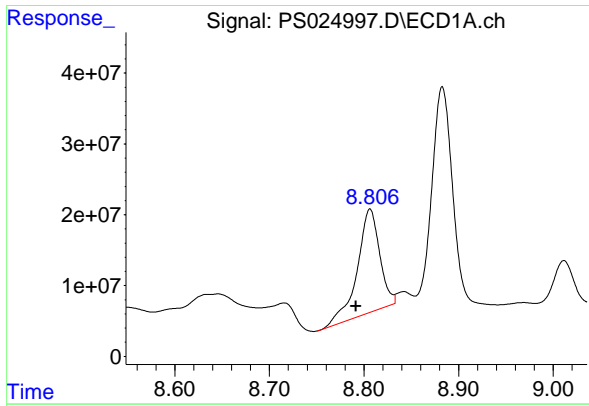
#12 2,4,5-T

R.T.: 8.299 min
 Delta R.T.: 0.013 min
 Response: 60630082
 Conc: 4.20 ng/ml



#12 2,4,5-T

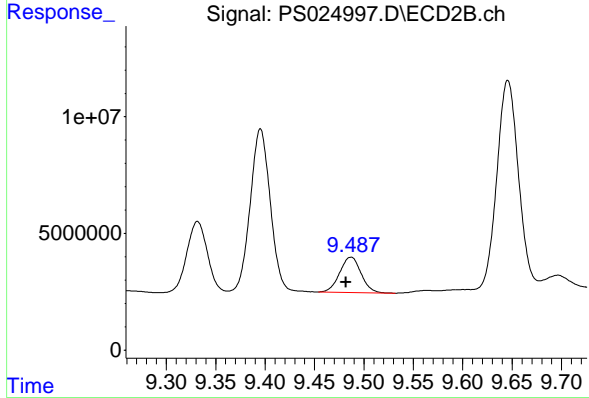
R.T.: 8.981 min
 Delta R.T.: 0.002 min
 Response: 7498866
 Conc: 1.74 ng/ml



#13 2,4-DB

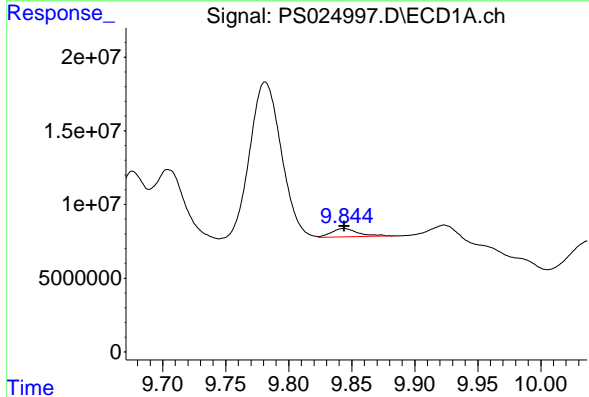
R.T.: 8.806 min
 Delta R.T.: 0.015 min
 Response: 239081331
 Conc: 102.91 ng/ml

Instrument : ECD_S
 ClientSampleId : LKWD-BACKFILL-01



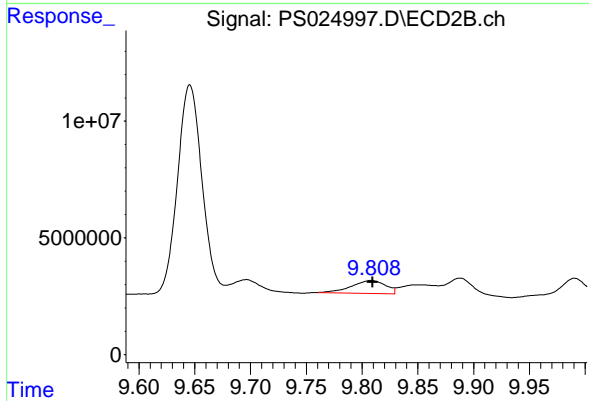
#13 2,4-DB

R.T.: 9.487 min
 Delta R.T.: 0.005 min
 Response: 22754075
 Conc: 41.11 ng/ml



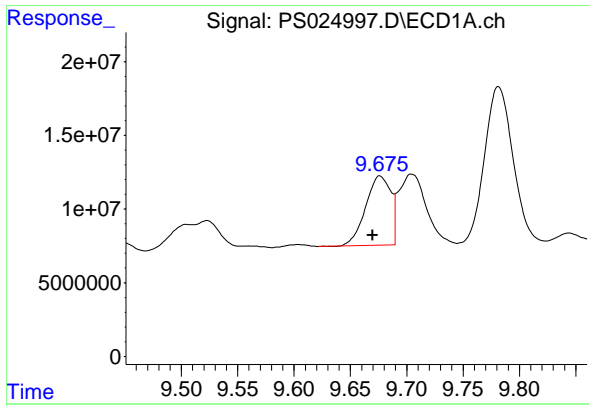
#14 DINOSEB

R.T.: 9.844 min
 Delta R.T.: 0.000 min
 Response: 8321722
 Conc: N.D.



#14 DINOSEB

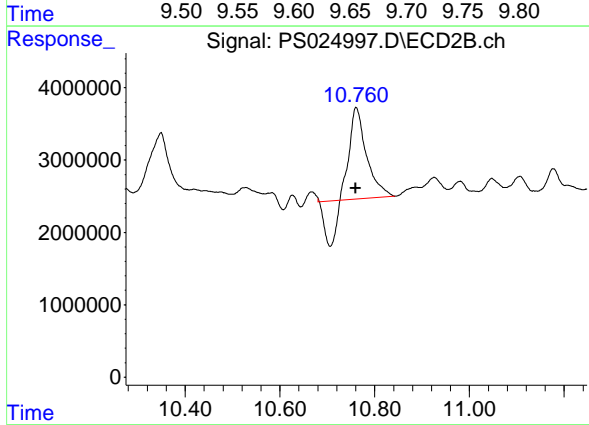
R.T.: 9.808 min
 Delta R.T.: -0.001 min
 Response: 11855954
 Conc: 3.87 ng/ml



#15 Picloram

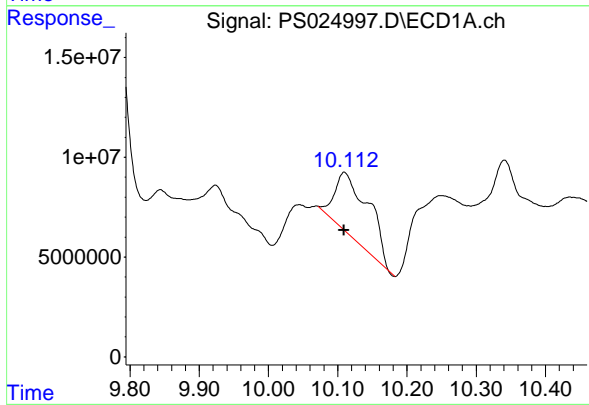
R.T.: 9.676 min
 Delta R.T.: 0.007 min
 Response: 72973282
 Conc: 3.74 ng/ml

Instrument : ECD_S
 ClientSampleId : LKWD-BACKFILL-01



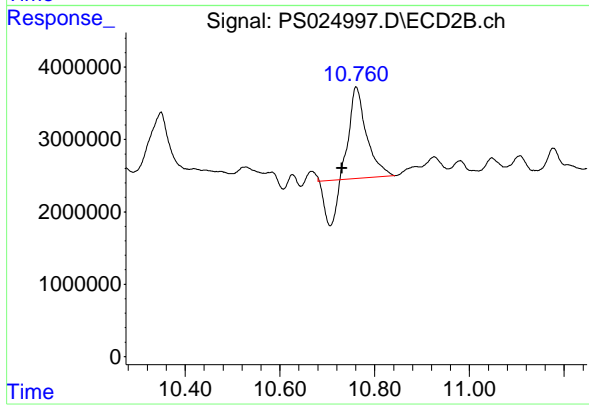
#15 Picloram

R.T.: 10.761 min
 Delta R.T.: 0.000 min
 Response: 22978229
 Conc: 3.51 ng/ml



#16 DCPA

R.T.: 10.110 min
 Delta R.T.: 0.000 min
 Response: 106617669
 Conc: 5.68 ng/ml



#16 DCPA

R.T.: 10.761 min
 Delta R.T.: 0.029 min
 Response: 22978229
 Conc: 4.24 ng/ml