

Data Path : Z:\pestpcbsrv\HPCHEM1\ECD_S\Data\PS120618\
 Data File : PS002512.D
 Signal(s) : Signal #1: ECD1A.ch Signal #2: ECD2B.ch
 Acq On : 06 Dec 2018 19:18
 Operator : EI\SJ
 Sample : HSTDICC200
 Misc :
 ALS Vial : 3 Sample Multiplier: 1

Instrument :
 ECD_S
 ClientSampleId :

Integration File signal 1: autoint1.e
 Integration File signal 2: autoint2.e
 Quant Time: Dec 10 05:56:41 2018
 Quant Method : Z:\pestpcbsrv\HPCHEM1\ECD_S\Method\PS120618.M
 Quant Title : 8080.M
 QLast Update : Mon Dec 10 05:54:48 2018
 Response via : Initial Calibration
 Integrator: ChemStation

Volume Inj. : 2 µl
 Signal #1 Phase : Rtx-CLPesticides Signal #2 Phase: Rtx-CLPesticides2
 Signal #1 Info : 30M x 0.32mm x0.5 Signal #2 Info : 30M x 0.32mm x 0.25µm

Compound	RT#1	RT#2	Resp#1	Resp#2	ng/ml	ng/ml

System Monitoring Compounds						
4) S 2,4-DCAA	11.402	10.895	68017664	81459378	212.167	206.946
Target Compounds						
1) T Dalapon	2.923	2.363	88710003	87083251	188.570	187.777
2) T 3,5-DICHL...	9.832	9.051	93303635	95074810	193.815	196.095
3) T 4-Nitroph...	11.006	10.044	26872297	33145913	165.314	182.291
5) T DICAMBA	11.706	11.176	272.9E6	270.2E6	188.054	183.909
6) T MCPP	12.041	11.400	12655720	16265635	12.471	16.604 #
7) T MCPA	12.290	11.815	23841575	1178979	15.276	0.774 #
8) T DICHLORPROP	12.895	12.300	71704632	65829288	199.693	177.809
9) T 2,4-D	13.260	12.773	62815307	79430663	173.089	181.589
10) T Pentachlo...	13.628	13.315	1030.8E6	1070.3E6	201.171	198.385
11) T 2,4,5-TP ...	14.498	13.935	382.1E6	411.7E6	191.371	190.446
12) T 2,4,5-T	14.899	14.499	365.7E6	338.8E6	189.027	193.408
13) T 2,4-DB	15.646	15.149	41710758	39435102	180.566	154.930
14) T DINOSEB	17.116	15.575	293.4E6	299.2E6	199.383	192.723
15) T Picloram	16.890	16.751	465.2E6	543.3E6	175.954	192.987
16) T DCPA	17.459	16.805	496.0E6	544.6E6	199.060	178.944

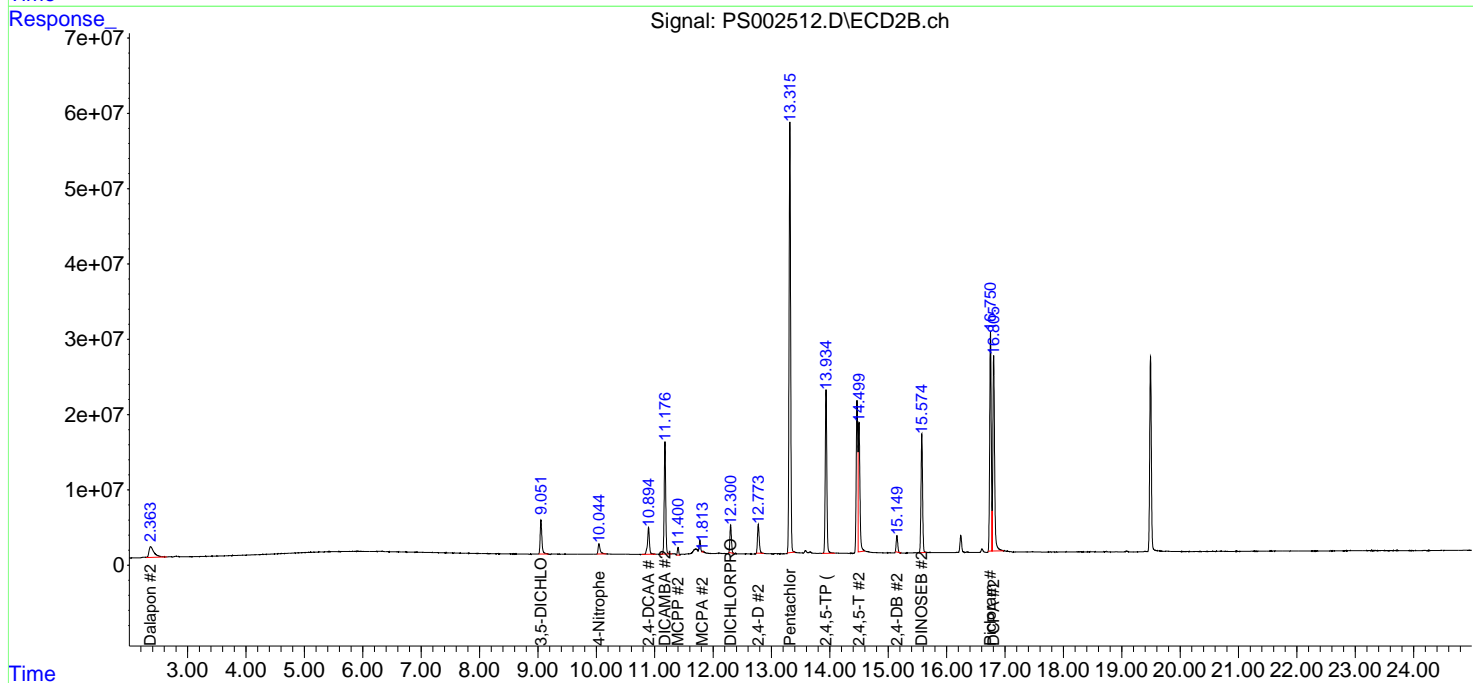
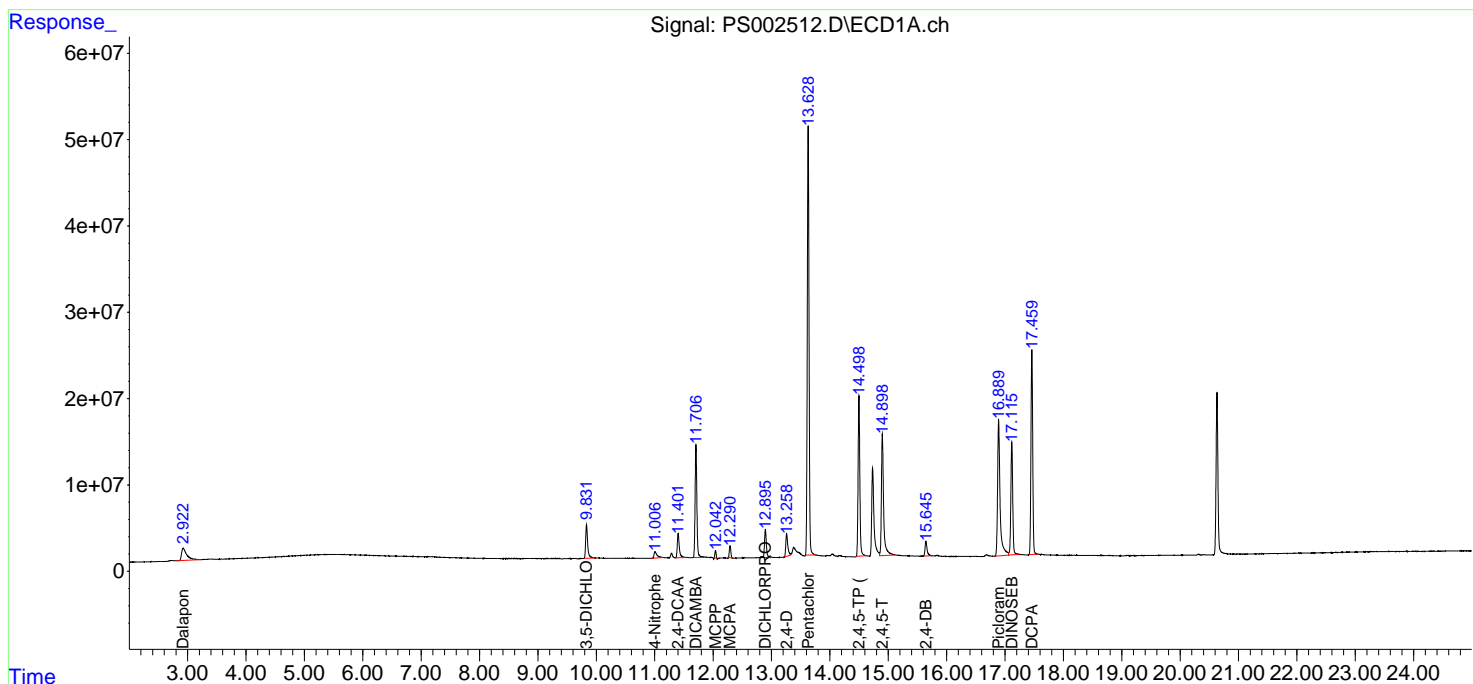
(f)=RT Delta > 1/2 Window (#)=Amounts differ by > 25% (m)=manual int.

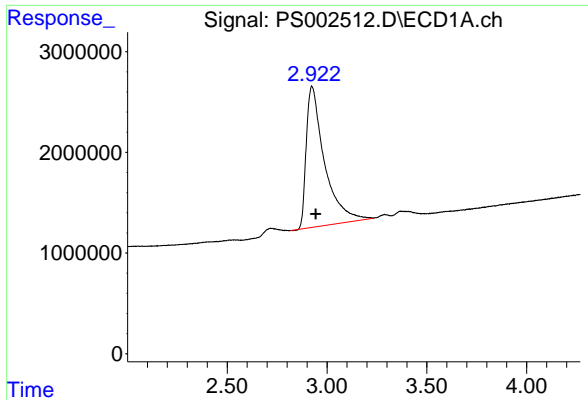
Data Path : Z:\pestpcbsrv\HPCHEM1\ECD_S\Data\PS120618\
 Data File : PS002512.D
 Signal(s) : Signal #1: ECD1A.ch Signal #2: ECD2B.ch
 Acq On : 06 Dec 2018 19:18
 Operator : EI\SJ
 Sample : HSTDIC200
 Misc :
 ALS Vial : 3 Sample Multiplier: 1

Instrument :
 ECD_S
 ClientSampled :

Integration File signal 1: autoint1.e
 Integration File signal 2: autoint2.e
 Quant Time: Dec 10 05:56:41 2018
 Quant Method : Z:\pestpcbsrv\HPCHEM1\ECD_S\Method\PS120618.M
 Quant Title : 8080.M
 QLast Update : Mon Dec 10 05:54:48 2018
 Response via : Initial Calibration
 Integrator: ChemStation

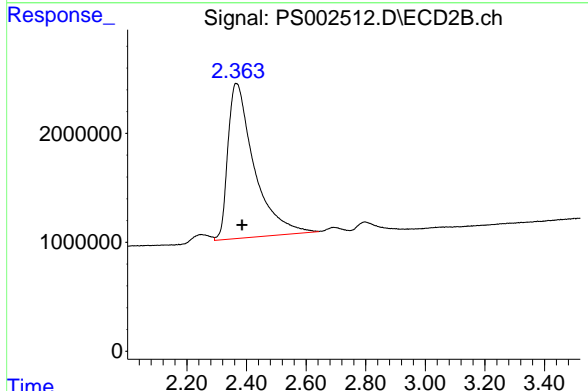
Volume Inj. : 2 µl
 Signal #1 Phase : Rtx-CLPesticides Signal #2 Phase: Rtx-CLPesticides2
 Signal #1 Info : 30M x 0.32mm x0.5 Signal #2 Info : 30M x 0.32mm x 0.25µm



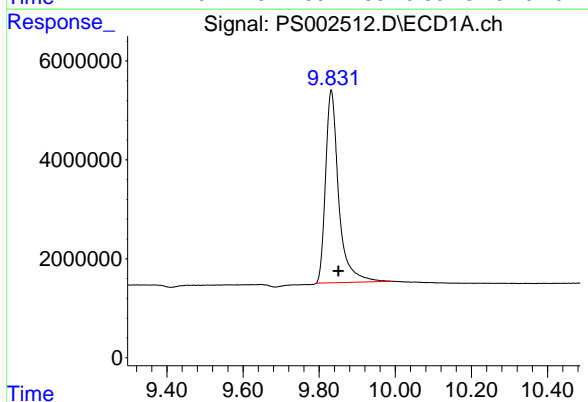


#1 Dalapon
 R.T.: 2.923 min
 Delta R.T.: -0.021 min
 Response: 88710003
 Conc: 188.57 ng/ml

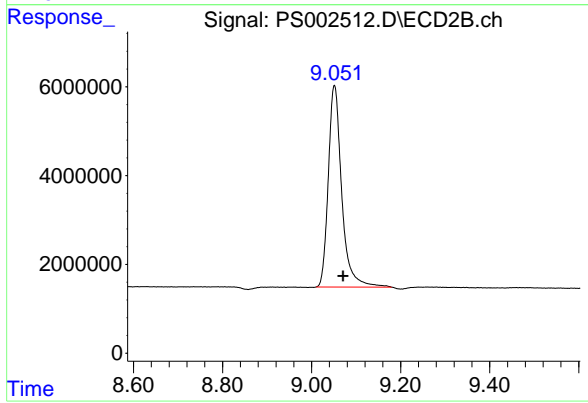
Instrument :
 ECD_S
 ClientSampleId :



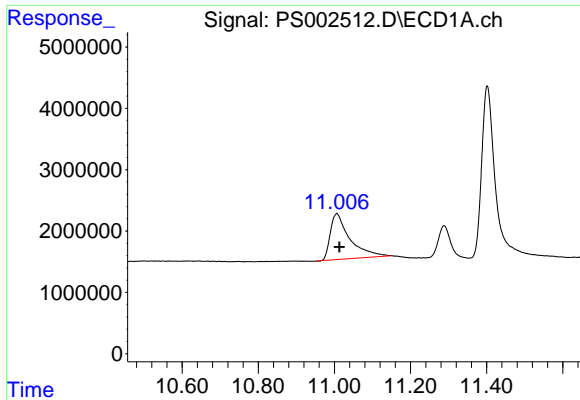
#1 Dalapon
 R.T.: 2.363 min
 Delta R.T.: -0.022 min
 Response: 87083251
 Conc: 187.78 ng/ml



#2 3,5-DICHLOROBENZOIC ACID
 R.T.: 9.832 min
 Delta R.T.: -0.019 min
 Response: 93303635
 Conc: 193.82 ng/ml

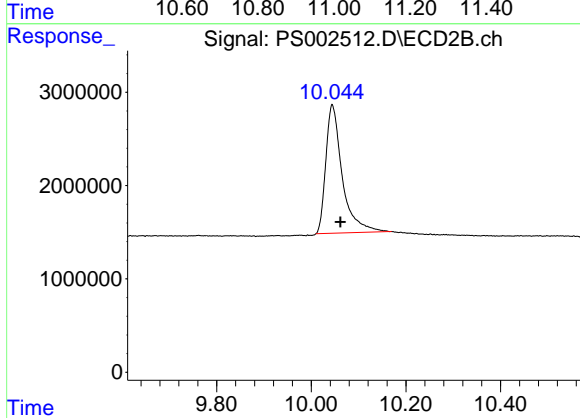


#2 3,5-DICHLOROBENZOIC ACID
 R.T.: 9.051 min
 Delta R.T.: -0.019 min
 Response: 95074810
 Conc: 196.10 ng/ml

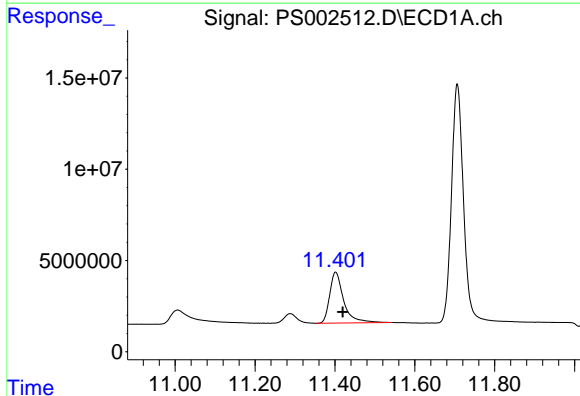


#3 4-Nitrophenol
 R.T.: 11.006 min
 Delta R.T.: -0.007 min
 Response: 26872297
 Conc: 165.31 ng/ml

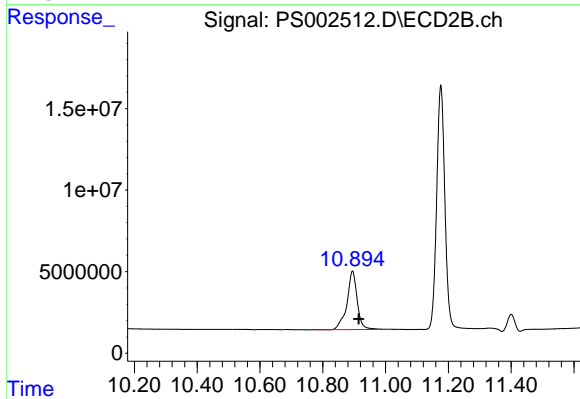
Instrument :
 ECD_S
 ClientSampleId :



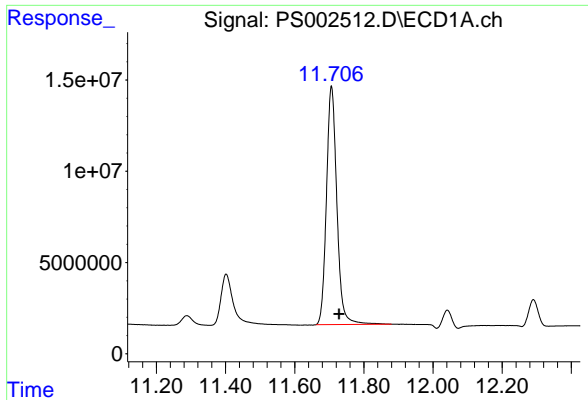
#3 4-Nitrophenol
 R.T.: 10.044 min
 Delta R.T.: -0.017 min
 Response: 33145913
 Conc: 182.29 ng/ml



#4 2,4-DCAA
 R.T.: 11.402 min
 Delta R.T.: -0.018 min
 Response: 68017664
 Conc: 212.17 ng/ml

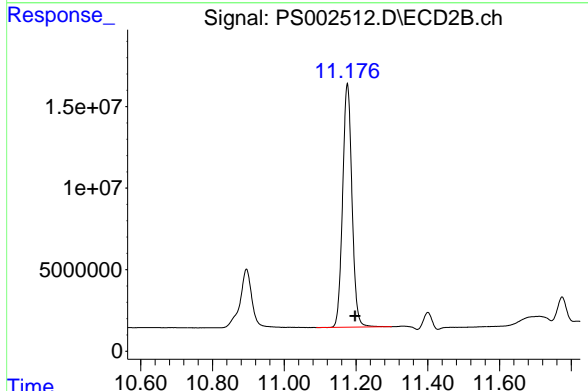


#4 2,4-DCAA
 R.T.: 10.895 min
 Delta R.T.: -0.020 min
 Response: 81459378
 Conc: 206.95 ng/ml

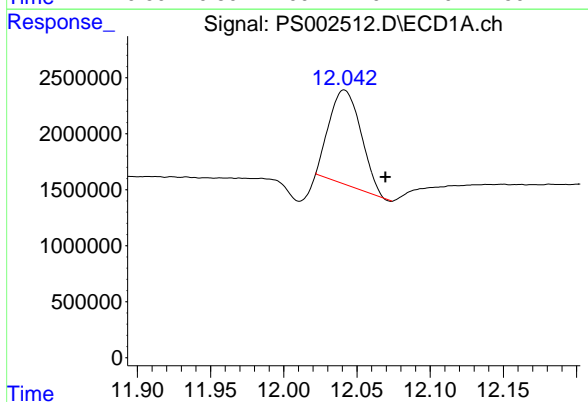


#5 DICAMBA
 R.T.: 11.706 min
 Delta R.T.: -0.022 min
 Response: 272936075
 Conc: 188.05 ng/ml

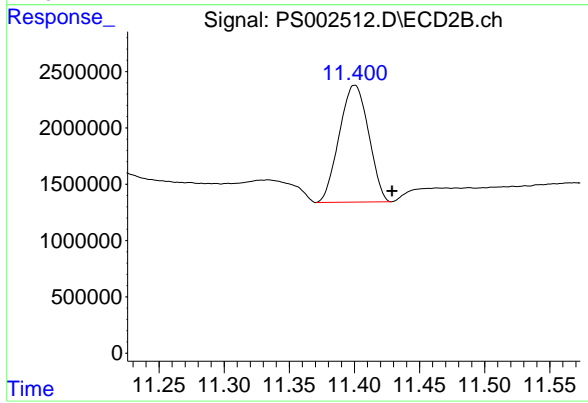
Instrument :
 ECD_S
 ClientSampleId :



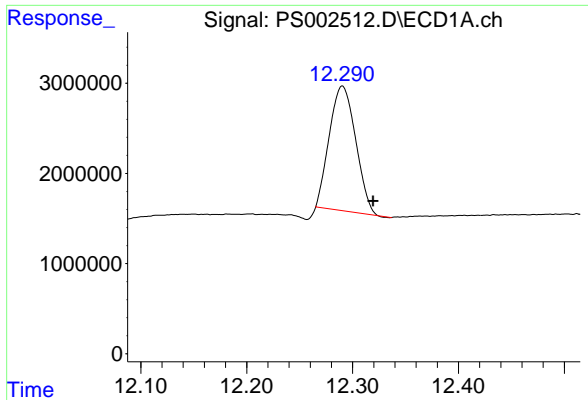
#5 DICAMBA
 R.T.: 11.176 min
 Delta R.T.: -0.022 min
 Response: 270237629
 Conc: 183.91 ng/ml



#6 MCPP
 R.T.: 12.041 min
 Delta R.T.: -0.028 min
 Response: 12655720
 Conc: 12.47 ug/ml

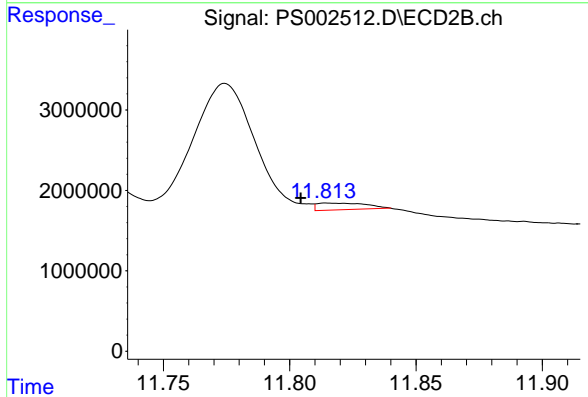


#6 MCPP
 R.T.: 11.400 min
 Delta R.T.: -0.029 min
 Response: 16265635
 Conc: 16.60 ug/ml

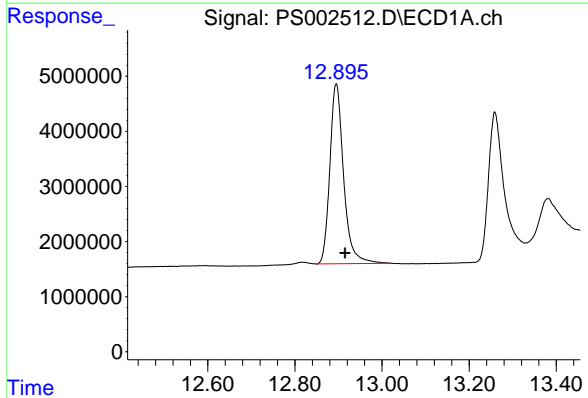


#7 MCPA
 R.T.: 12.290 min
 Delta R.T.: -0.029 min
 Response: 23841575
 Conc: 15.28 ug/ml

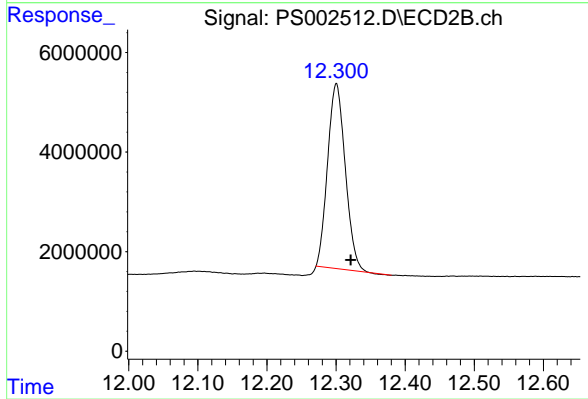
Instrument :
 ECD_S
 ClientSampled :



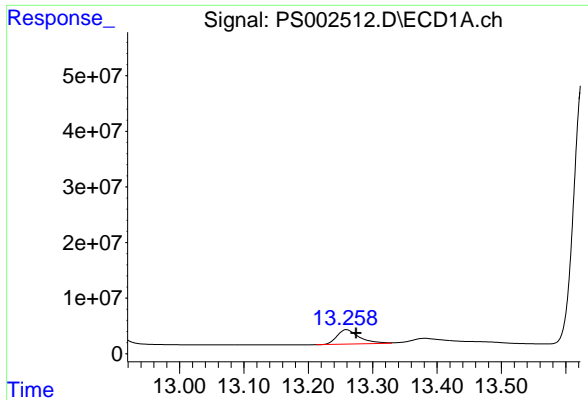
#7 MCPA
 R.T.: 11.815 min
 Delta R.T.: 0.011 min
 Response: 1178979
 Conc: 0.77 ug/ml



#8 DICHLORPROP
 R.T.: 12.895 min
 Delta R.T.: -0.020 min
 Response: 71704632
 Conc: 199.69 ng/ml

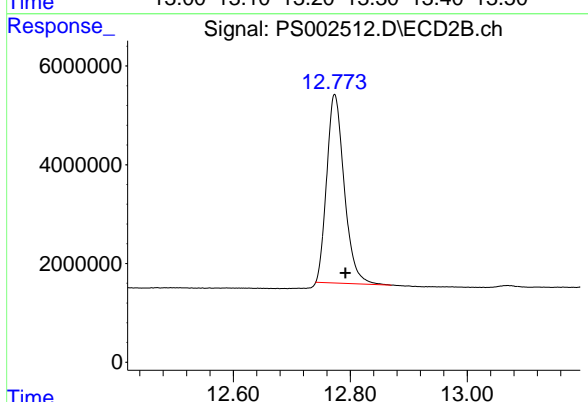


#8 DICHLORPROP
 R.T.: 12.300 min
 Delta R.T.: -0.021 min
 Response: 65829288
 Conc: 177.81 ng/ml

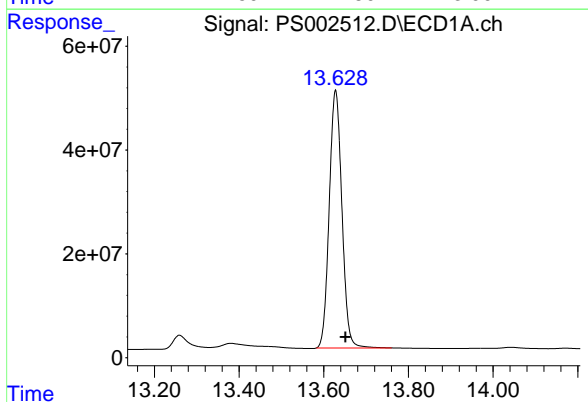


#9 2,4-D
 R.T.: 13.260 min
 Delta R.T.: -0.014 min
 Response: 62815307
 Conc: 173.09 ng/ml

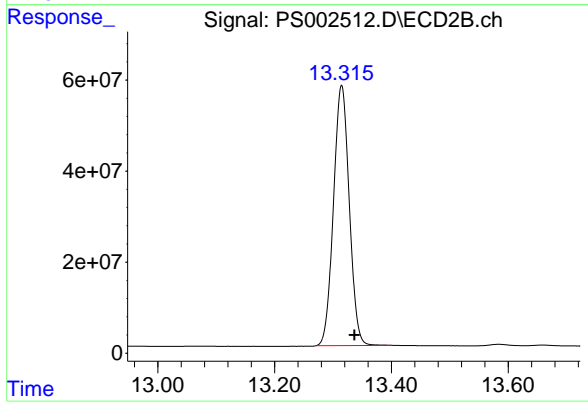
Instrument :
 ECD_S
 ClientSampled :



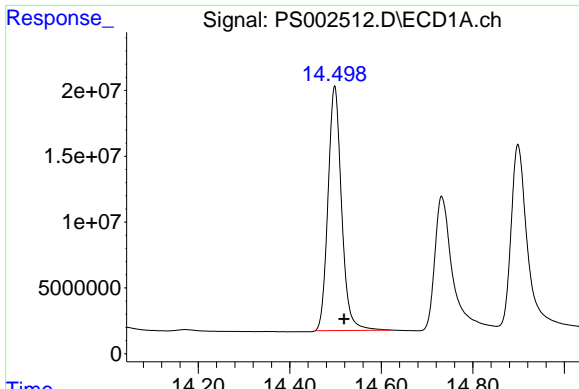
#9 2,4-D
 R.T.: 12.773 min
 Delta R.T.: -0.019 min
 Response: 79430663
 Conc: 181.59 ng/ml



#10 Pentachlorophenol
 R.T.: 13.628 min
 Delta R.T.: -0.023 min
 Response: 1030811256
 Conc: 201.17 ng/ml

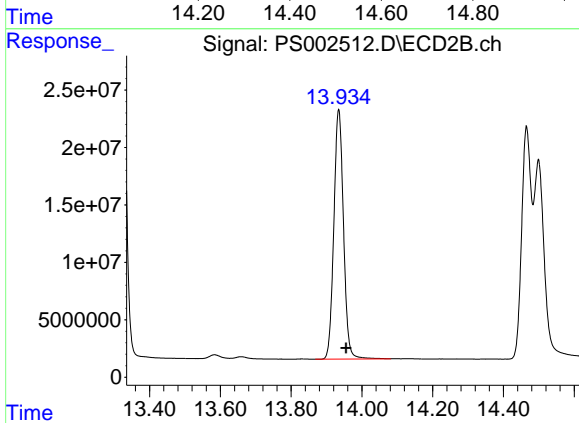


#10 Pentachlorophenol
 R.T.: 13.315 min
 Delta R.T.: -0.022 min
 Response: 1070306166
 Conc: 198.38 ng/ml

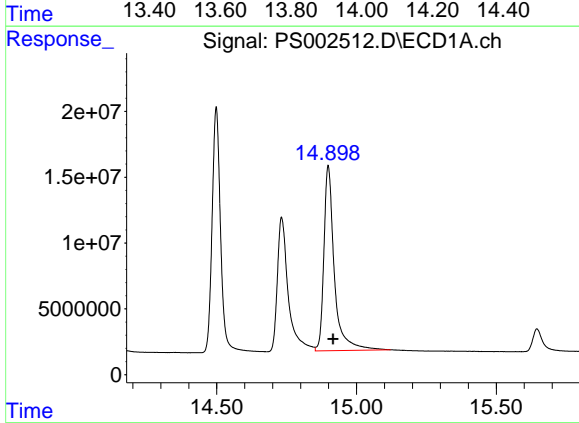


#11 2,4,5-TP (SILVEX)
 R.T.: 14.498 min
 Delta R.T.: -0.021 min
 Response: 382055986
 Conc: 191.37 ng/ml

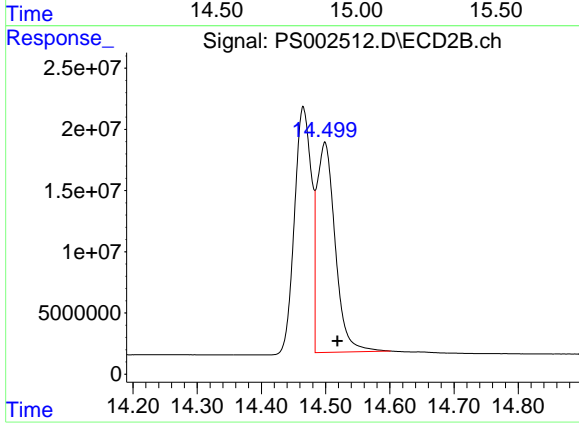
Instrument :
 ECD_S
 ClientSampled :



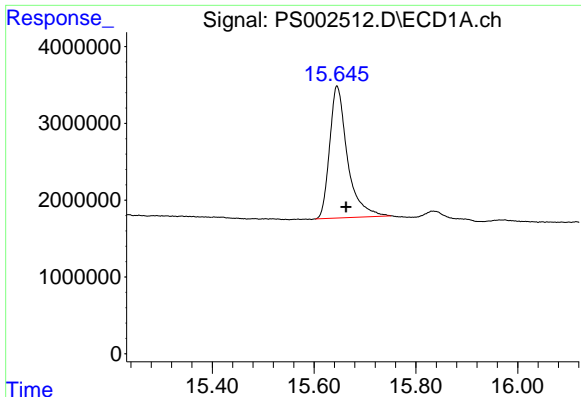
#11 2,4,5-TP (SILVEX)
 R.T.: 13.935 min
 Delta R.T.: -0.021 min
 Response: 411710344
 Conc: 190.45 ng/ml



#12 2,4,5-T
 R.T.: 14.899 min
 Delta R.T.: -0.018 min
 Response: 365710862
 Conc: 189.03 ng/ml



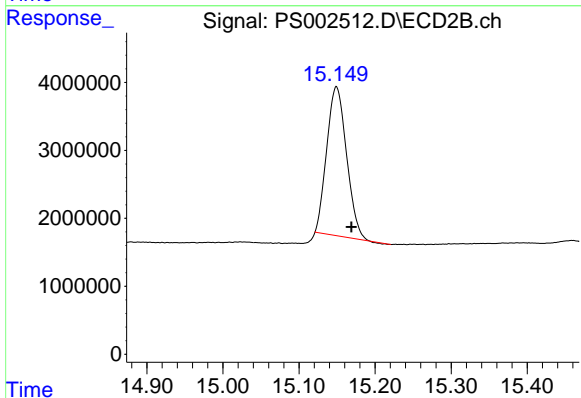
#12 2,4,5-T
 R.T.: 14.499 min
 Delta R.T.: -0.019 min
 Response: 338810162
 Conc: 193.41 ng/ml



#13 2,4-DB

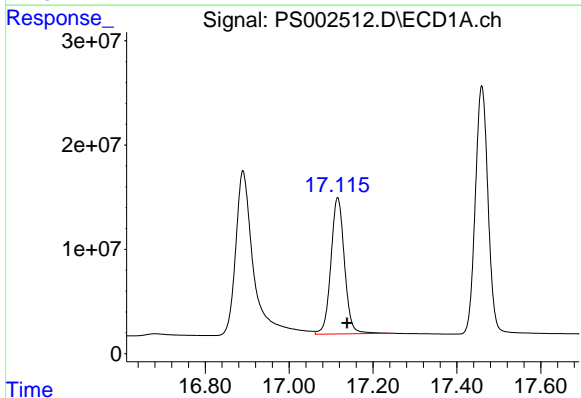
R.T.: 15.646 min
Delta R.T.: -0.017 min
Response: 41710758
Conc: 180.57 ng/ml

Instrument :
ECD_S
ClientSampleId :



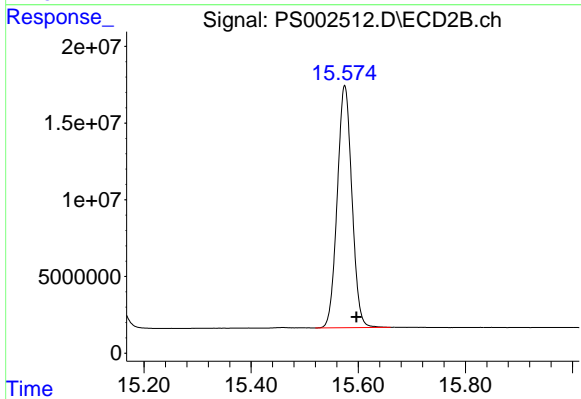
#13 2,4-DB

R.T.: 15.149 min
Delta R.T.: -0.020 min
Response: 39435102
Conc: 154.93 ng/ml



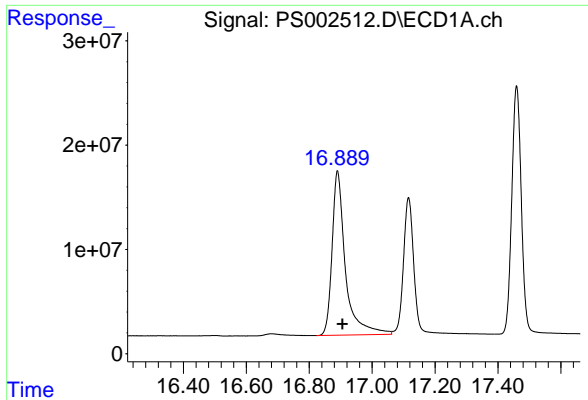
#14 DINOSEB

R.T.: 17.116 min
Delta R.T.: -0.023 min
Response: 293433984
Conc: 199.38 ng/ml



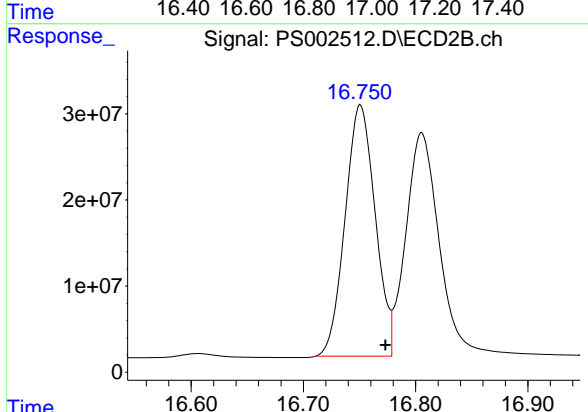
#14 DINOSEB

R.T.: 15.575 min
Delta R.T.: -0.022 min
Response: 299247071
Conc: 192.72 ng/ml

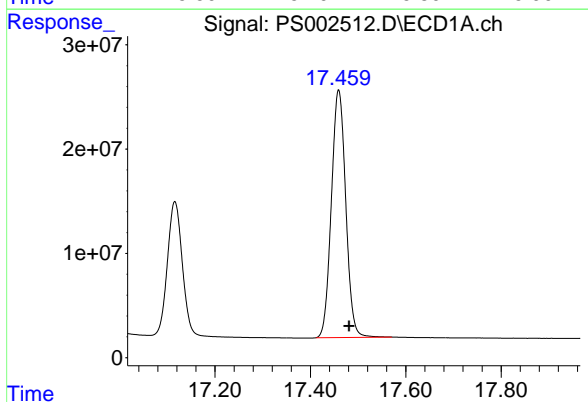


#15 Picloram
 R.T.: 16.890 min
 Delta R.T.: -0.016 min
 Response: 465189258
 Conc: 175.95 ng/ml

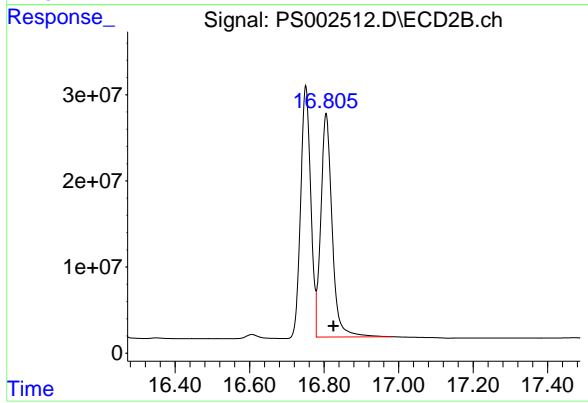
Instrument :
 ECD_S
 ClientSampled :



#15 Picloram
 R.T.: 16.751 min
 Delta R.T.: -0.023 min
 Response: 543321851
 Conc: 192.99 ng/ml



#16 DCPA
 R.T.: 17.459 min
 Delta R.T.: -0.022 min
 Response: 496022225
 Conc: 199.06 ng/ml



#16 DCPA
 R.T.: 16.805 min
 Delta R.T.: -0.020 min
 Response: 544577469
 Conc: 178.94 ng/ml