

Data Path : Z:\pestpcbsrv\HPCHEM1\ECD_S\Data\PS120622\
 Data File : PS021344.D
 Signal(s) : Signal #1: ECD1A.ch Signal #2: ECD2B.ch
 Acq On : 06 Dec 2022 14:14
 Operator : AR\AJ
 Sample : N5830-01
 Misc :
 ALS Vial : 12 Sample Multiplier: 1

Instrument :
 ECD_S
 ClientSampleId :
 COMP1-1201

Integration File signal 1: autoint1.e
 Integration File signal 2: autoint2.e
 Quant Time: Dec 07 03:45:29 2022
 Quant Method : Z:\pestpcbsrv\HPCHEM1\ECD_S\Method\PS111622.M
 Quant Title : 8080.M
 QLast Update : Thu Nov 17 00:46:07 2022
 Response via : Initial Calibration
 Integrator: ChemStation

Volume Inj. : 2 µl
 Signal #1 Phase : Rtx-CLPesticides Signal #2 Phase: Rtx-CLPesticides2
 Signal #1 Info : 30M x 0.32mm x0.5 Signal #2 Info : 30M x 0.32mm x 0.25µm

Compound	RT#1	RT#2	Resp#1	Resp#2	ng/ml	ng/ml

System Monitoring Compounds						
4) S 2,4-DCAA	6.410	6.842	1052.7E6	719.9E6	484.138	476.079

Target Compounds

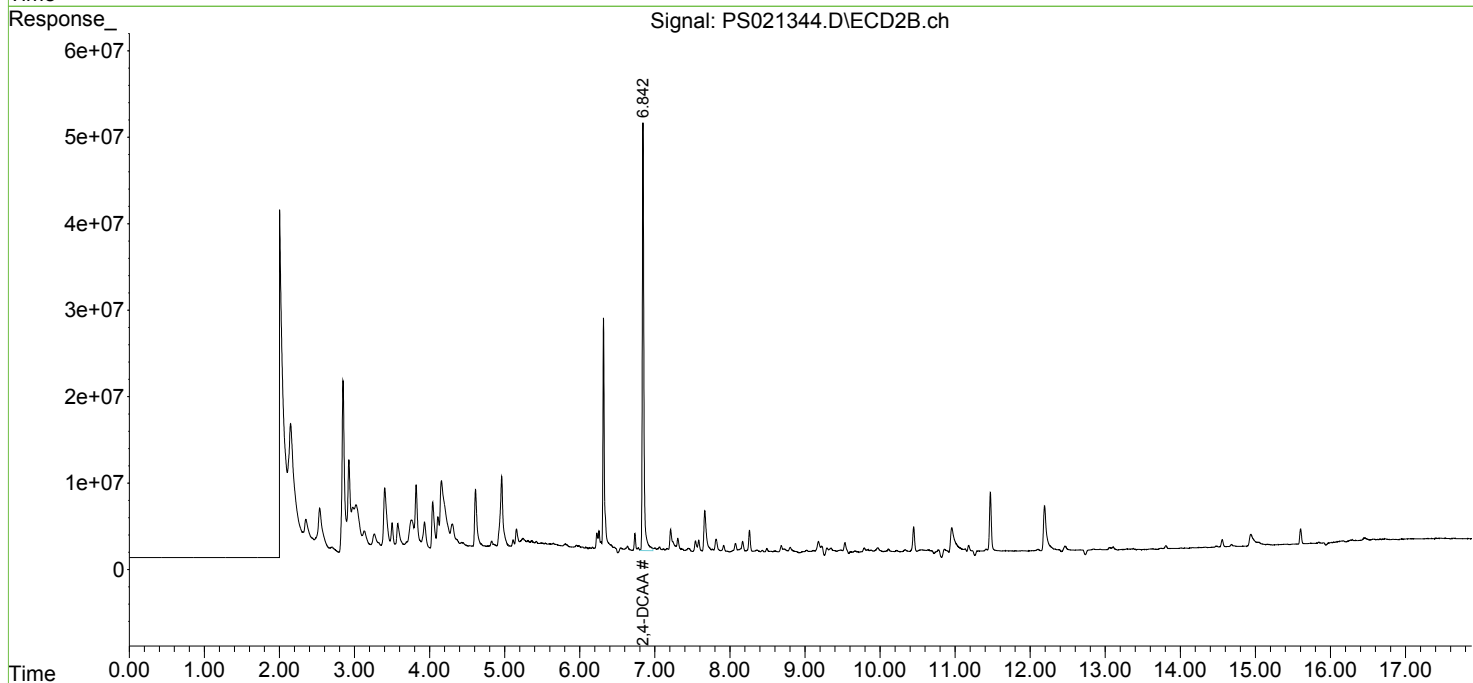
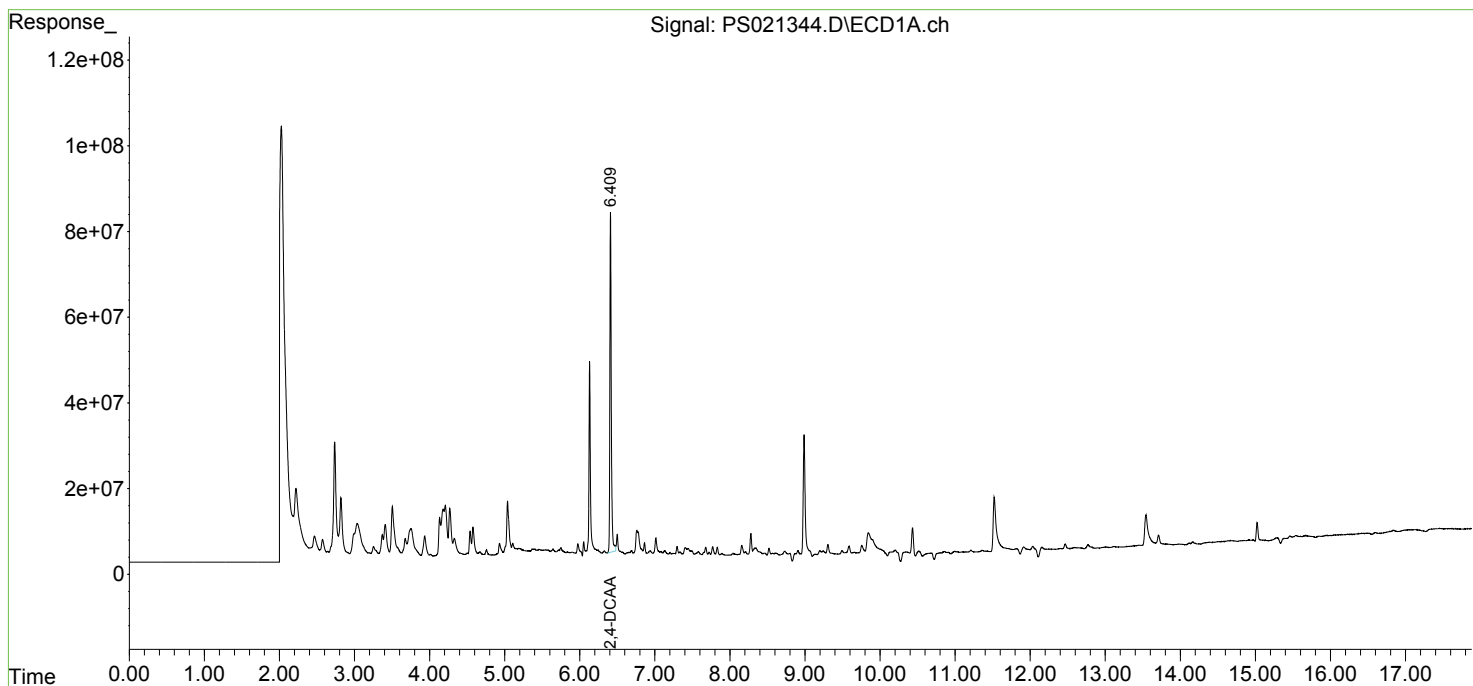
(f)=RT Delta > 1/2 Window (#)=Amounts differ by > 25% (m)=manual int.

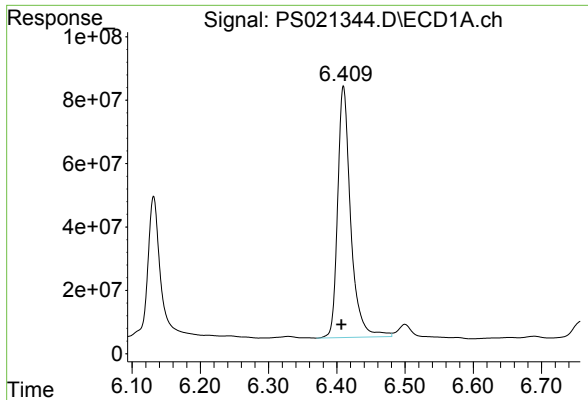
Data Path : Z:\pestpcbsrv\HPCHEM1\ECD_S\Data\PS120622\
 Data File : PS021344.D
 Signal(s) : Signal #1: ECD1A.ch Signal #2: ECD2B.ch
 Acq On : 06 Dec 2022 14:14
 Operator : AR\AJ
 Sample : N5830-01
 Misc :
 ALS Vial : 12 Sample Multiplier: 1

Instrument :
 ECD_S
ClientSampleId :
 COMP1-1201

Integration File signal 1: autoint1.e
 Integration File signal 2: autoint2.e
 Quant Time: Dec 07 03:45:29 2022
 Quant Method : Z:\pestpcbsrv\HPCHEM1\ECD_S\Method\PS111622.M
 Quant Title : 8080.M
 QLast Update : Thu Nov 17 00:46:07 2022
 Response via : Initial Calibration
 Integrator: ChemStation

Volume Inj. : 2 µl
 Signal #1 Phase : Rtx-CLPesticides Signal #2 Phase: Rtx-CLPesticides2
 Signal #1 Info : 30M x 0.32mm x 0.5 Signal #2 Info : 30M x 0.32mm x 0.25µm

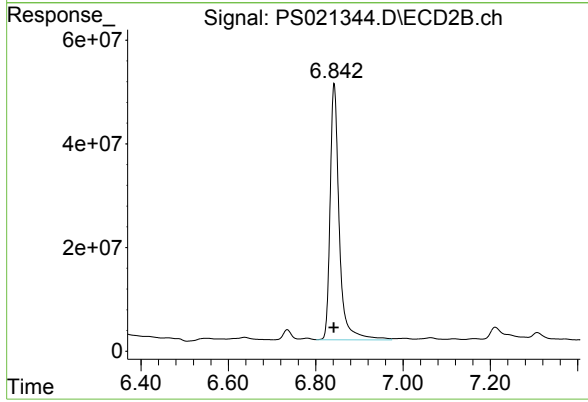




#4 2,4-DCAA

R.T.: 6.410 min
Delta R.T.: 0.003 min
Response: 1052657501
Conc: 484.14 ng/ml

Instrument :
ECD_S
ClientSampleId :
COMP1-1201



#4 2,4-DCAA

R.T.: 6.842 min
Delta R.T.: 0.000 min
Response: 719886822
Conc: 476.08 ng/ml