

Data Path : Z:\pestpcbsrv\HPCHEM1\ECD_S\Data\PS120624\
 Data File : PS028726.D
 Signal(s) : Signal #1: ECD1A.ch Signal #2: ECD2B.ch
 Acq On : 06 Dec 2024 18:56
 Operator : AR\AJ
 Sample : I.BLK
 Misc :
 ALS Vial : 2 Sample Multiplier: 1

Instrument :
 ECD_S
 ClientSampleId :

Integration File signal 1: autoint1.e
 Integration File signal 2: autoint2.e
 Quant Time: Dec 06 22:58:38 2024
 Quant Method : Z:\pestpcbsrv\HPCHEM1\ECD_S\Method\PS112624.M
 Quant Title : 8080.M
 QLast Update : Tue Nov 26 14:44:30 2024
 Response via : Initial Calibration
 Integrator: ChemStation

Volume Inj. : 1 µl
 Signal #1 Phase : ZB-MR1 Signal #2 Phase: ZB-MR2
 Signal #1 Info : 30M x 0.32mm x0.5 Signal #2 Info : 30M x 0.32mm x 0.25µm

Compound	RT#1	RT#2	Resp#1	Resp#2	ng/ml	ng/ml

System Monitoring Compounds						
4) S 2,4-DCAA	7.225	7.720	1347.1E6	610.7E6	502.194	453.382
Target Compounds						
1) T Dalapon	2.669f	2.720f	21699134	3755069	7.478	1.720 #
3) T 4-Nitroph...	7.019	0.000	6542088	0	3.806	N.D. #
5) T DICAMBA	0.000	7.918	0	4610515	N.D.	<MDL
7) T MCPA	0.000	8.242f	0	8286352	N.D.	1.335
8) T DICHLORPROP	8.089f	8.685f	2402230	4951527	<MDL	3.097 #
10) T Pentachlo...	8.650	0.000	1058071	0	<MDL	N.D. #
11) T 2,4,5-TP ...	9.228	9.865	1420804	6014677	<MDL	<MDL #
12) T 2,4,5-T	9.529	10.292	8203198	2008585	<MDL	<MDL #
14) T DINOSEB	11.299	0.000	2515608	0	<MDL	N.D. #
15) T Picloram	11.125	12.331	21805708	8088358	<MDL	<MDL #
16) T DCPA	11.590	0.000	3489321	0	<MDL	N.D. #

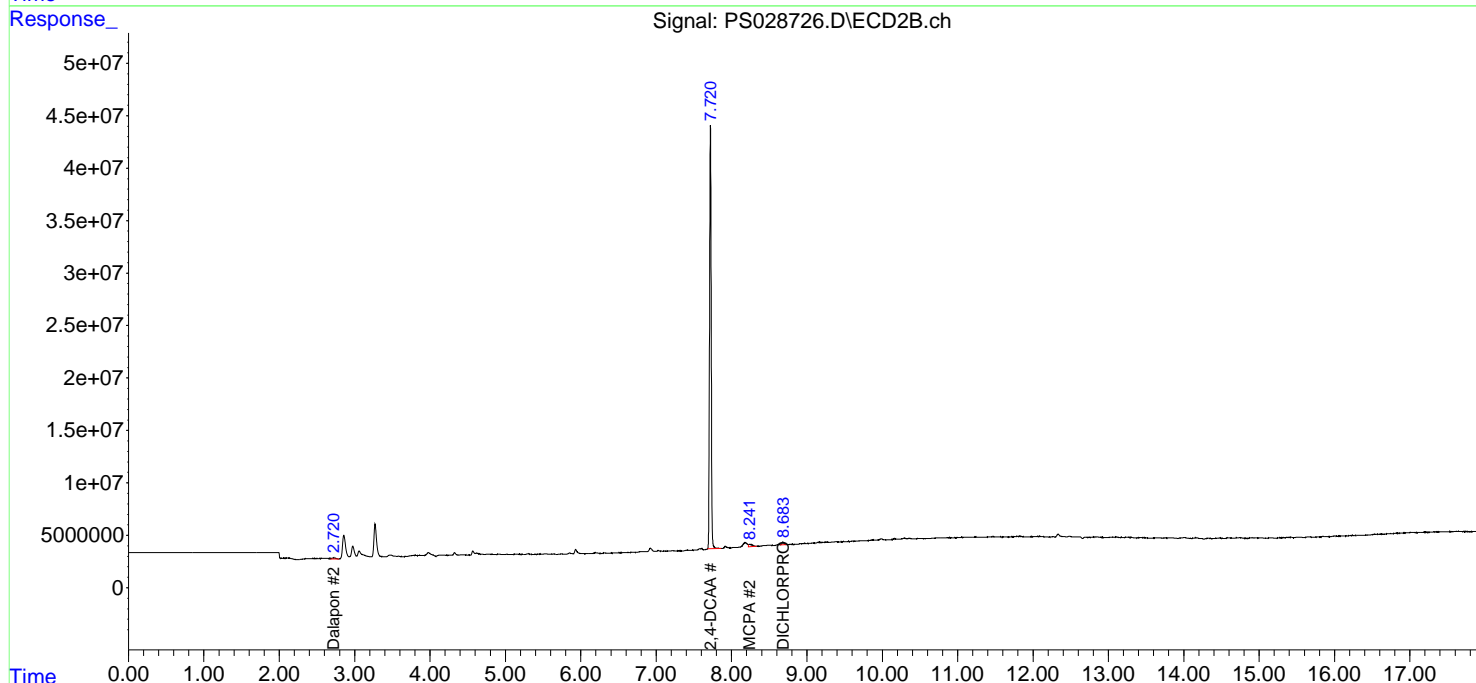
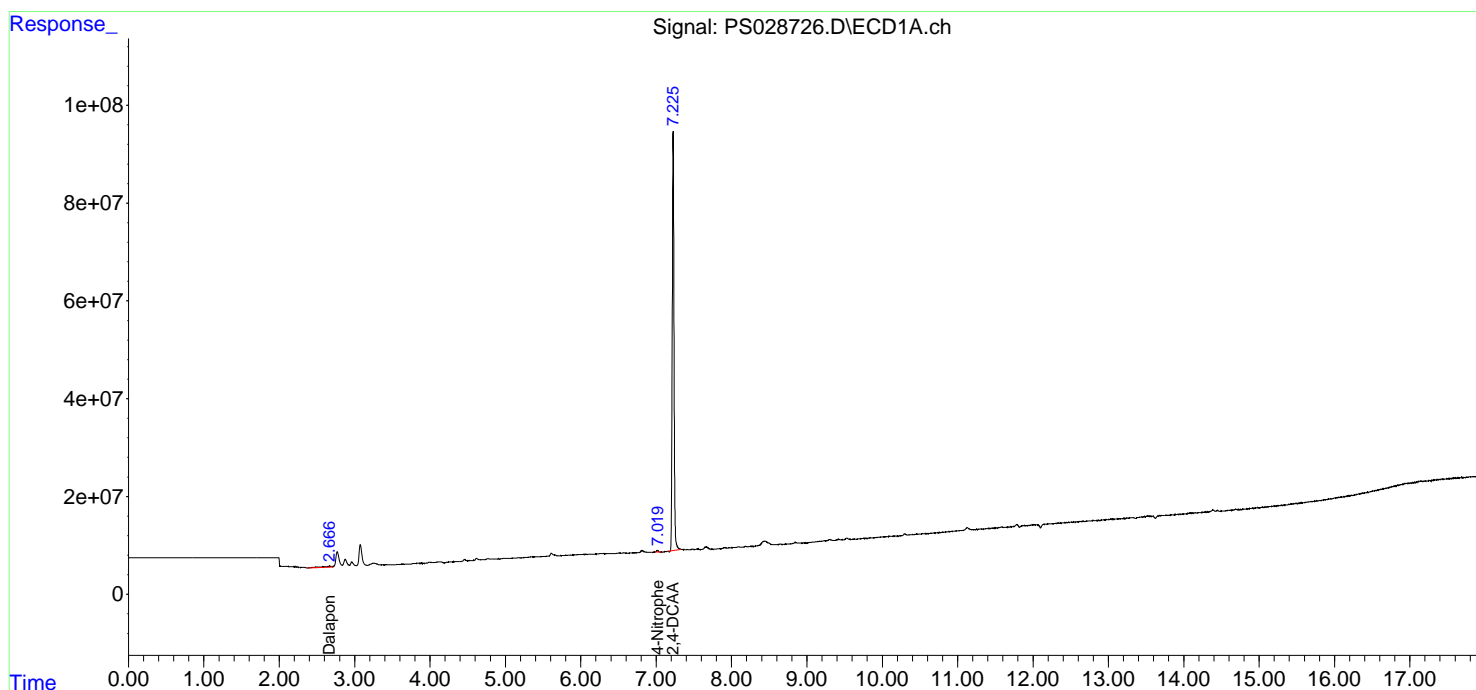
(f)=RT Delta > 1/2 Window (#)=Amounts differ by > 25% (m)=manual int.

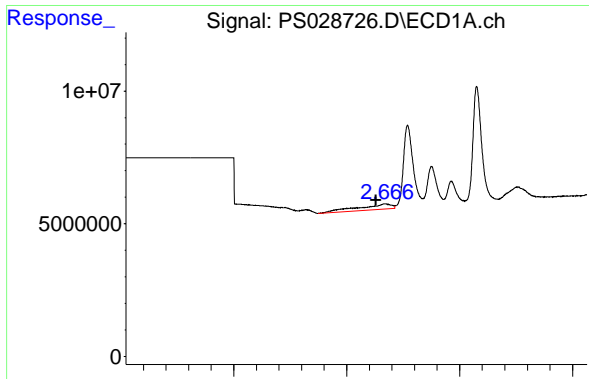
Data Path : Z:\pestpcbsrv\HPCHEM1\ECD_S\Data\PS120624\
Data File : PS028726.D
Signal(s) : Signal #1: ECD1A.ch Signal #2: ECD2B.ch
Acq On : 06 Dec 2024 18:56
Operator : AR\AJ
Sample : I.BLK
Misc :
ALS Vial : 2 Sample Multiplier: 1

Instrument :
ECD_S
ClientSampleId :

Integration File signal 1: autoint1.e
Integration File signal 2: autoint2.e
Quant Time: Dec 06 22:58:38 2024
Quant Method : Z:\pestpcbsrv\HPCHEM1\ECD_S\Method\PS112624.M
Quant Title : 8080.M
QLast Update : Tue Nov 26 14:44:30 2024
Response via : Initial Calibration
Integrator: ChemStation

Volume Inj. : 1 µl
Signal #1 Phase : ZB-MR1 Signal #2 Phase: ZB-MR2
Signal #1 Info : 30M x 0.32mm x 0.5 Signal #2 Info : 30M x 0.32mm x 0.25µm

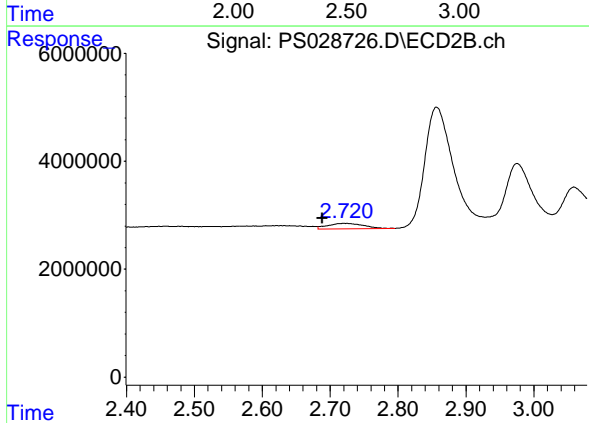




#1 Dalapon

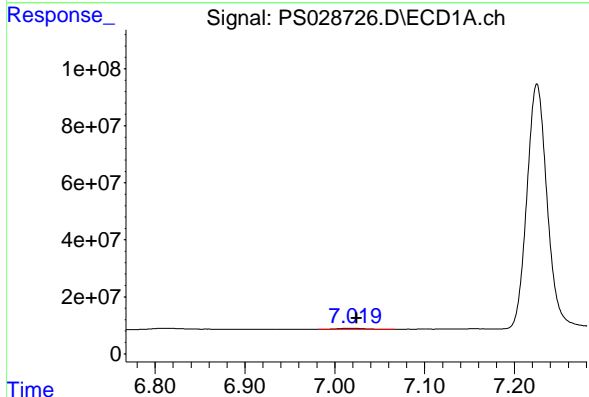
R.T.: 2.669 min
 Delta R.T.: 0.039 min
 Response: 21699134
 Conc: 7.48 ng/ml

Instrument :
 ECD_S
 ClientSampleId :



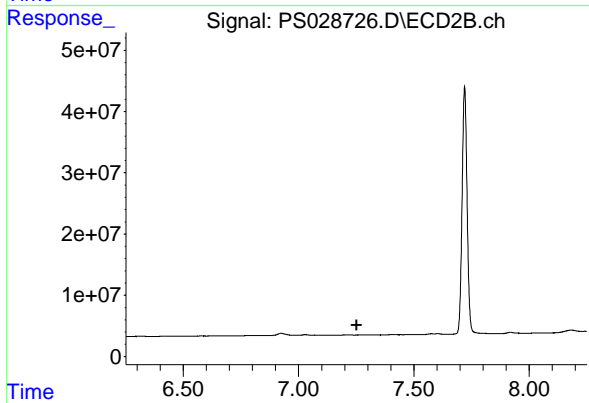
#1 Dalapon

R.T.: 2.720 min
 Delta R.T.: 0.032 min
 Response: 3755069
 Conc: 1.72 ng/ml



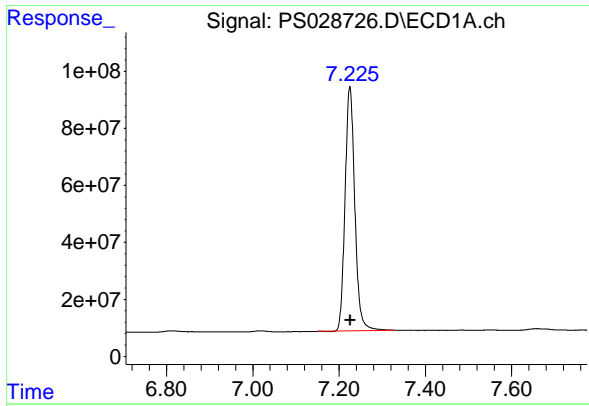
#3 4-Nitrophenol

R.T.: 7.019 min
 Delta R.T.: -0.006 min
 Response: 6542088
 Conc: 3.81 ng/ml



#3 4-Nitrophenol

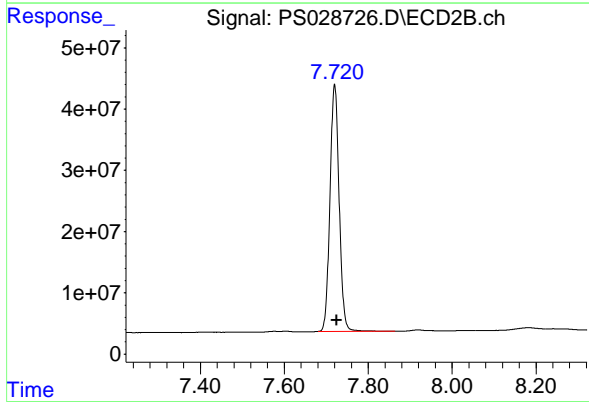
R.T.: 0.000 min
 Exp R.T. : 7.251 min
 Response: 0
 Conc: N.D.



#4 2,4-DCAA

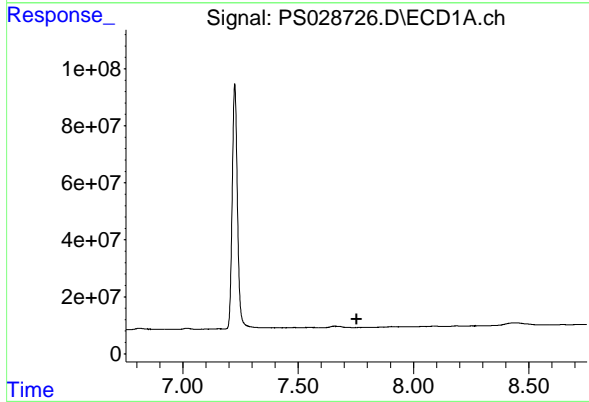
R.T.: 7.225 min
 Delta R.T.: -0.001 min
 Response: 1347056395
 Conc: 502.19 ng/ml

Instrument :
 ECD_S
 ClientSampleId :



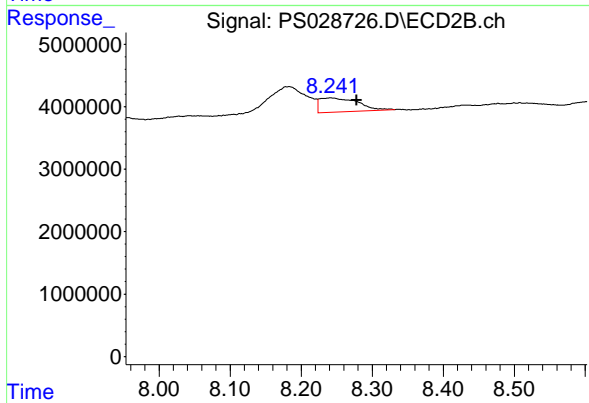
#4 2,4-DCAA

R.T.: 7.720 min
 Delta R.T.: -0.005 min
 Response: 610719615
 Conc: 453.38 ng/ml



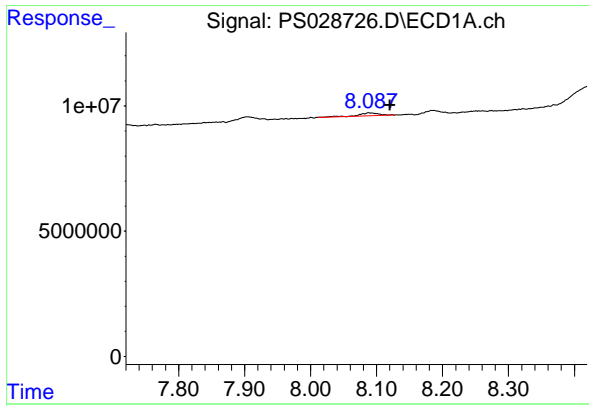
#7 MCPA

R.T.: 0.000 min
 Exp R.T. : 7.753 min
 Response: 0
 Conc: N.D.



#7 MCPA

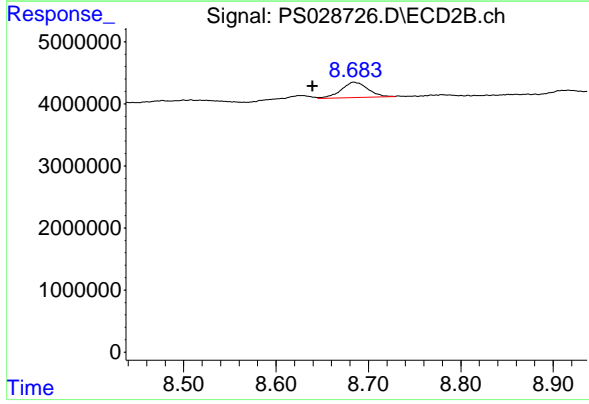
R.T.: 8.242 min
 Delta R.T.: -0.037 min
 Response: 8286352
 Conc: 1.34 ug/ml



#8 DICHLORPROP

R.T.: 8.089 min
Delta R.T.: -0.032 min
Response: 2402230
Conc: N.D.

Instrument :
ECD_S
ClientSampleId :



#8 DICHLORPROP

R.T.: 8.685 min
Delta R.T.: 0.045 min
Response: 4951527
Conc: 3.10 ng/ml