

Data Path : Z:\pestpcbsrv\HPCHEM1\ECD_S\Data\PS120721\
 Data File : PS017551.D
 Signal(s) : Signal #1: ECD1A.ch Signal #2: ECD2B.ch
 Acq On : 07 Dec 2021 09:43
 Operator : AJ\MA
 Sample : I.BLK
 Misc :
 ALS Vial : 2 Sample Multiplier: 1

Instrument :
 ECD_S
 ClientSampleId :

Integration File signal 1: autoint1.e
 Integration File signal 2: autoint2.e
 Quant Time: Dec 07 14:07:47 2021
 Quant Method : Z:\pestpcbsrv\HPCHEM1\ECD_S\Method\PS111821.M
 Quant Title : 8080.M
 QLast Update : Fri Nov 19 21:46:29 2021
 Response via : Initial Calibration
 Integrator: ChemStation

Volume Inj. : 2 µl
 Signal #1 Phase : Rtx-CLPesticides Signal #2 Phase: Rtx-CLPesticides2
 Signal #1 Info : 30M x 0.32mm x0.5 Signal #2 Info : 30M x 0.32mm x 0.25µm

Compound	RT#1	RT#2	Resp#1	Resp#2	ng/ml	ng/ml

System Monitoring Compounds						
4) S 2,4-DCAA	7.148	6.737	679.6E6	262.4E6	432.233	442.832
Target Compounds						
9) T 2,4-D	8.325f	0.000	24662794	0	13.199	N.D. #

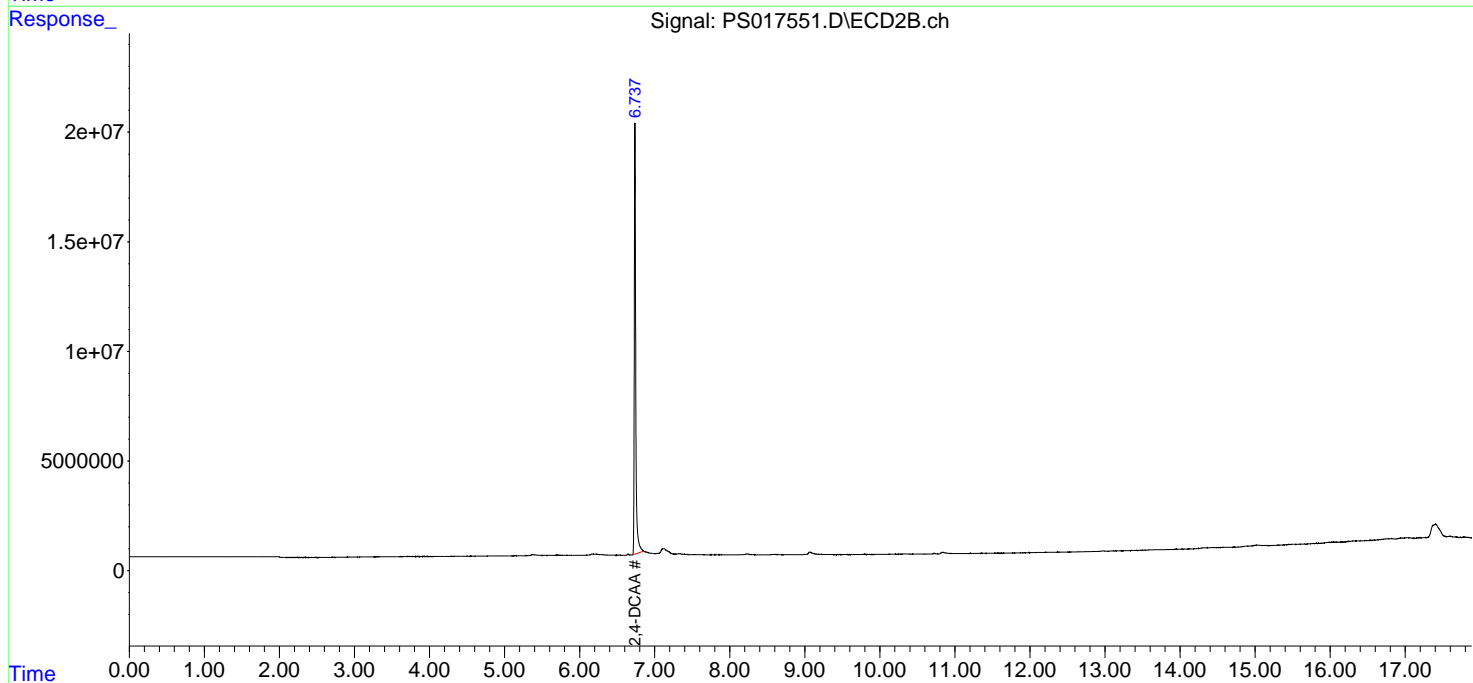
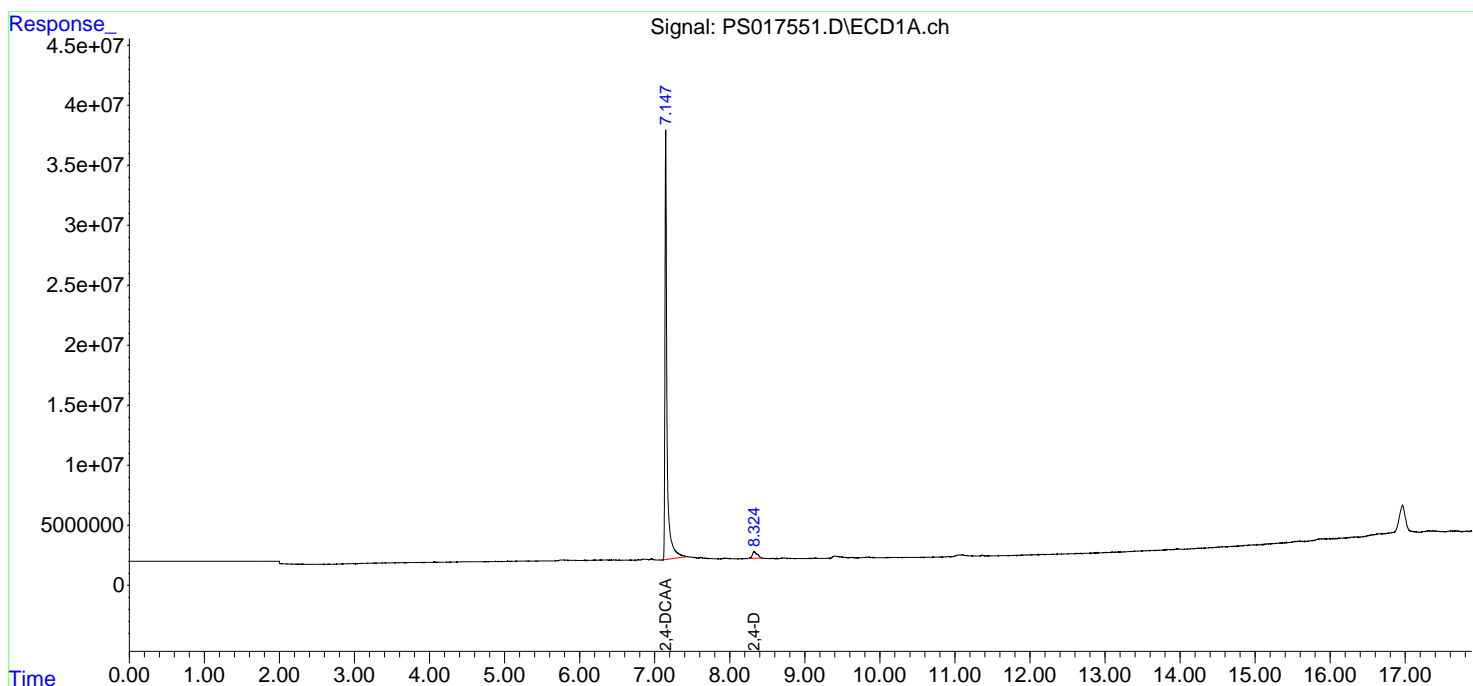
(f)=RT Delta > 1/2 Window (#)=Amounts differ by > 25% (m)=manual int.

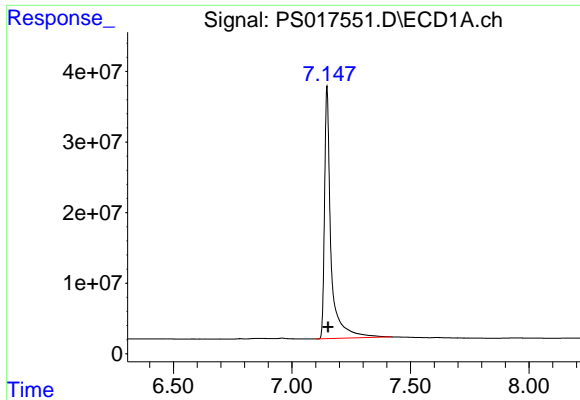
Data Path : Z:\pestpcbsrv\HPCHEM1\ECD_S\Data\PS120721\
Data File : PS017551.D
Signal(s) : Signal #1: ECD1A.ch Signal #2: ECD2B.ch
Acq On : 07 Dec 2021 09:43
Operator : AJ\MA
Sample : I.BLK
Misc :
ALS Vial : 2 Sample Multiplier: 1

Instrument :
ECD_S
ClientSampleId :

Integration File signal 1: autoint1.e
Integration File signal 2: autoint2.e
Quant Time: Dec 07 14:07:47 2021
Quant Method : Z:\pestpcbsrv\HPCHEM1\ECD_S\Method\PS111821.M
Quant Title : 8080.M
QLast Update : Fri Nov 19 21:46:29 2021
Response via : Initial Calibration
Integrator: ChemStation

Volume Inj. : 2 µl
Signal #1 Phase : Rtx-CLPesticides Signal #2 Phase: Rtx-CLPesticides2
Signal #1 Info : 30M x 0.32mm x 0.5 Signal #2 Info : 30M x 0.32mm x 0.25µm

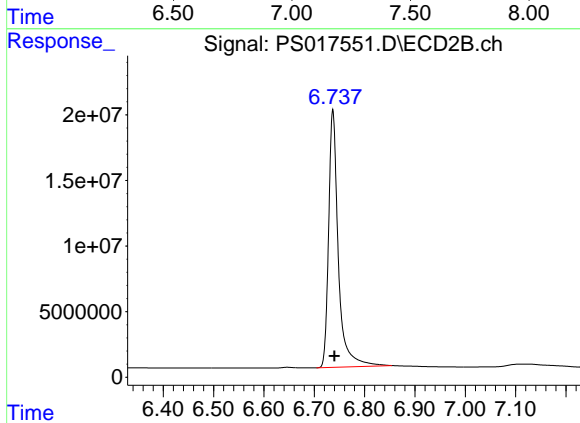




#4 2,4-DCAA

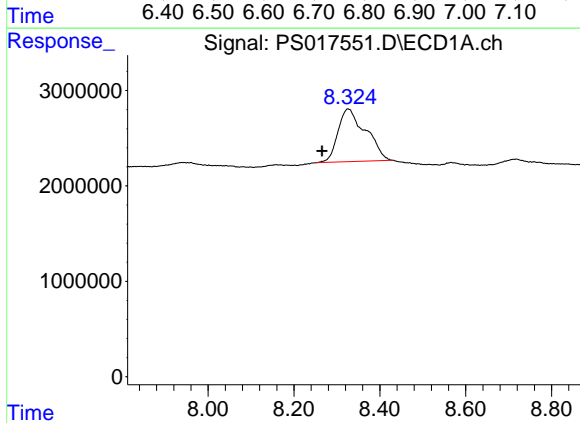
R.T.: 7.148 min
 Delta R.T.: -0.005 min
 Response: 679554201
 Conc: 432.23 ng/ml

Instrument :
 ECD_S
 ClientSampleId :



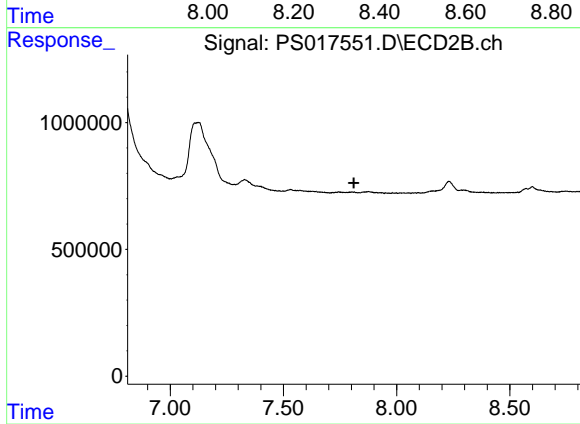
#4 2,4-DCAA

R.T.: 6.737 min
 Delta R.T.: -0.003 min
 Response: 262412373
 Conc: 442.83 ng/ml



#9 2,4-D

R.T.: 8.325 min
 Delta R.T.: 0.059 min
 Response: 24662794
 Conc: 13.20 ng/ml



#9 2,4-D

R.T.: 0.000 min
 Exp R.T. : 7.811 min
 Response: 0
 Conc: N.D.