

Data Path : Z:\pestpcbsrv\HPCHEM1\ECD\_S\Data\PS120922\  
 Data File : PS021420.D  
 Signal(s) : Signal #1: ECD1A.ch Signal #2: ECD2B.ch  
 Acq On : 09 Dec 2022 18:44  
 Operator : AR\AJ  
 Sample : HSTDCCC750  
 Misc :  
 ALS Vial : 3 Sample Multiplier: 1

Instrument :  
 ECD\_S  
 ClientSampleId :

Integration File signal 1: autoint1.e  
 Integration File signal 2: autoint2.e  
 Quant Time: Dec 10 04:33:06 2022  
 Quant Method : Z:\pestpcbsrv\HPCHEM1\ECD\_S\Method\PS120722.M  
 Quant Title : 8080.M  
 QLast Update : Wed Dec 07 15:59:29 2022  
 Response via : Initial Calibration  
 Integrator: ChemStation

Volume Inj. : 2 µl  
 Signal #1 Phase : Rtx-CLPesticides Signal #2 Phase: Rtx-CLPesticides2  
 Signal #1 Info : 30M x 0.32mm x0.5 Signal #2 Info : 30M x 0.32mm x 0.25µm

	Compound	RT#1	RT#2	Resp#1	Resp#2	ng/ml	ng/ml
-----							
System Monitoring Compounds							
4) S	2,4-DCAA	6.378	6.810	2038.5E6	1288.6E6	701.590	747.451
Target Compounds							
1) T	Dalapon	2.480	2.555	2079.2E6	1501.1E6	657.968	668.669
2) T	3,5-DICHL...	5.750	5.991	2734.5E6	1833.5E6	688.044	700.654
3) T	4-Nitroph...	6.217	6.425	1199.9E6	792.4E6	667.340	679.992
5) T	DICAMBA	6.520	6.975	8225.6E6	5461.5E6	714.811	715.118
6) T	MCP P	6.678	7.075	643.6E6	423.8E6	68.930	72.023
7) T	MCPA	6.804	7.288	884.0E6	597.1E6	69.012	67.526
8) T	DICHLORPROP	7.118	7.600	2175.9E6	1371.7E6	692.120	696.449
9) T	2,4-D	7.320	7.891	2651.3E6	1701.3E6	693.850	705.251
10) T	Pentachlo...	7.549	8.319	29838.7E6	18728.8E6	733.755	710.442
11) T	2,4,5-TP ...	8.077	8.681	13038.6E6	7971.9E6	705.149	711.868
12) T	2,4,5-T	8.337	9.057	13375.4E6	7792.9E6	708.909	718.993
13) T	2,4-DB	8.845	9.564	2572.5E6	1059.9E6	702.426	737.318
14) T	DINOSEB	9.900	9.891	11081.4E6	5607.6E6	695.512	708.994
15) T	Picloram	9.734	10.861	18912.2E6	10724.0E6	660.343	659.465
16) T	DCPA	10.167	10.819	17993.3E6	9641.1E6	706.518	710.563
-----							

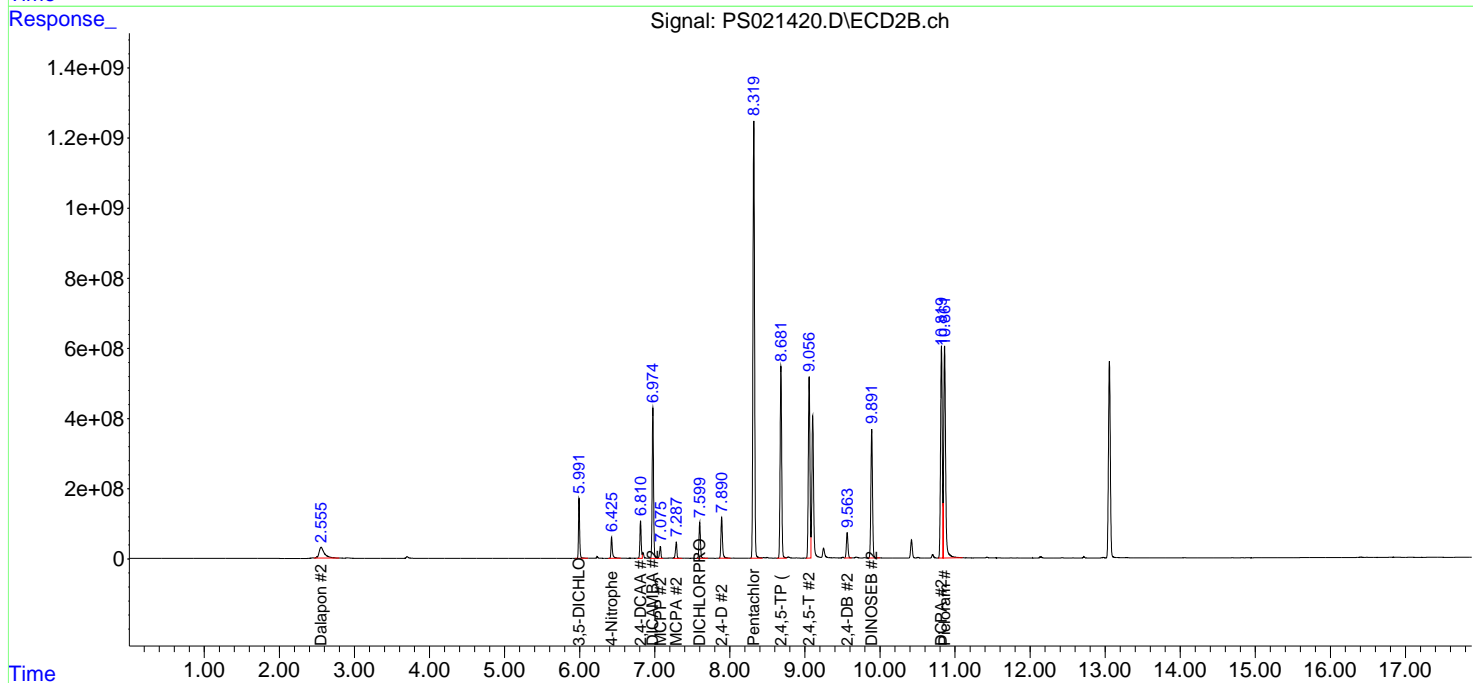
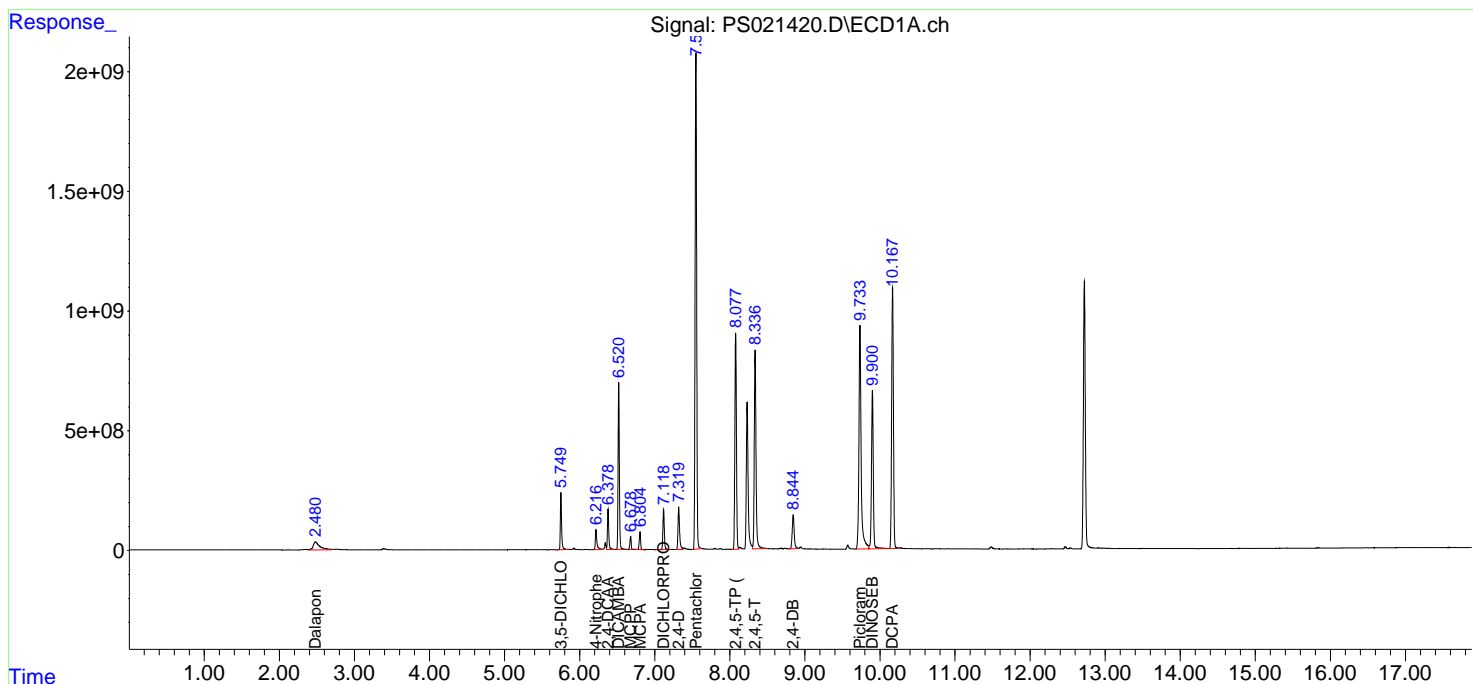
(f)=RT Delta > 1/2 Window (#)=Amounts differ by > 25% (m)=manual int.

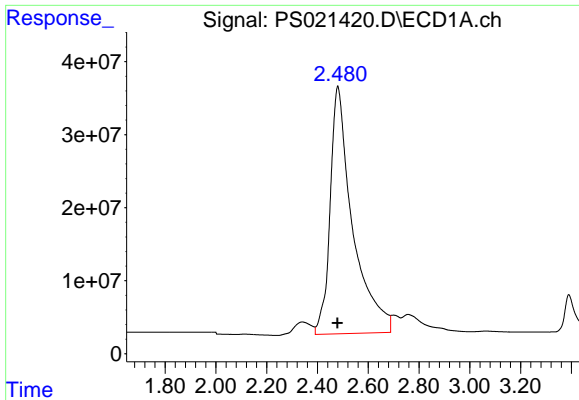
Data Path : Z:\pestpcbsrv\HPCHEM1\ECD\_S\Data\PS120922\  
 Data File : PS021420.D  
 Signal(s) : Signal #1: ECD1A.ch Signal #2: ECD2B.ch  
 Acq On : 09 Dec 2022 18:44  
 Operator : AR\AJ  
 Sample : HSTDCCC750  
 Misc :  
 ALS Vial : 3 Sample Multiplier: 1

Instrument :  
 ECD\_S  
 ClientSampleId :

Integration File signal 1: autoint1.e  
 Integration File signal 2: autoint2.e  
 Quant Time: Dec 10 04:33:06 2022  
 Quant Method : Z:\pestpcbsrv\HPCHEM1\ECD\_S\Method\PS120722.M  
 Quant Title : 8080.M  
 QLast Update : Wed Dec 07 15:59:29 2022  
 Response via : Initial Calibration  
 Integrator: ChemStation

Volume Inj. : 2 µl  
 Signal #1 Phase : Rtx-CLPesticides Signal #2 Phase: Rtx-CLPesticides2  
 Signal #1 Info : 30M x 0.32mm x0.5 Signal #2 Info : 30M x 0.32mm x 0.25µm

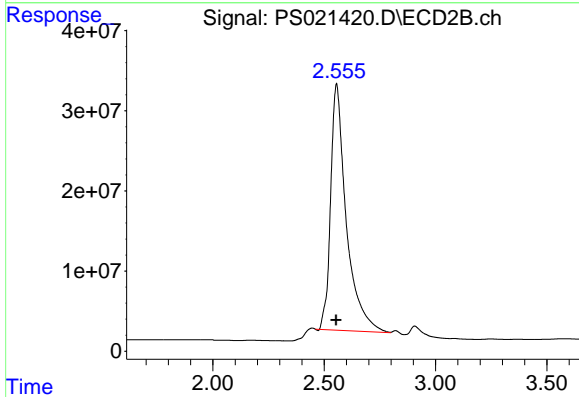




#1 Dalapon

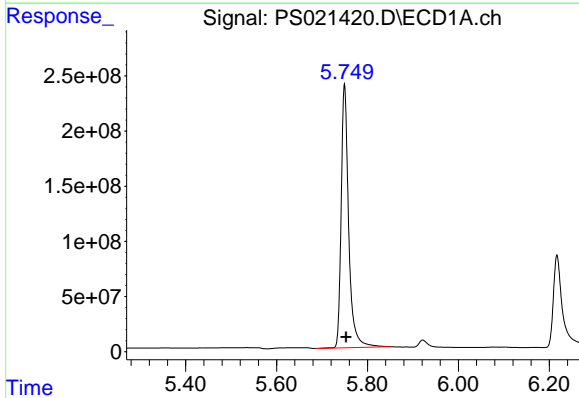
R.T.: 2.480 min  
 Delta R.T.: 0.001 min  
 Response: 2079229550  
 Conc: 657.97 ng/ml

Instrument :  
 ECD\_S  
 ClientSampleId :



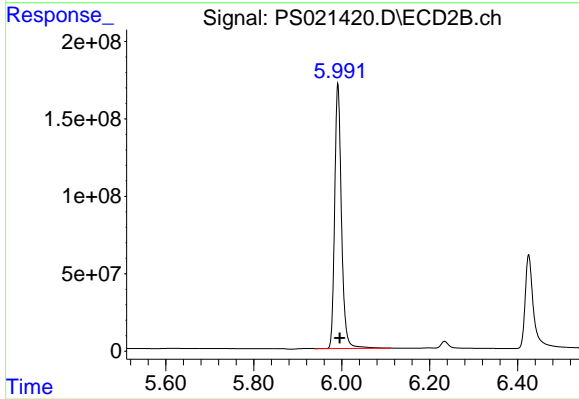
#1 Dalapon

R.T.: 2.555 min  
 Delta R.T.: 0.002 min  
 Response: 1501119271  
 Conc: 668.67 ng/ml



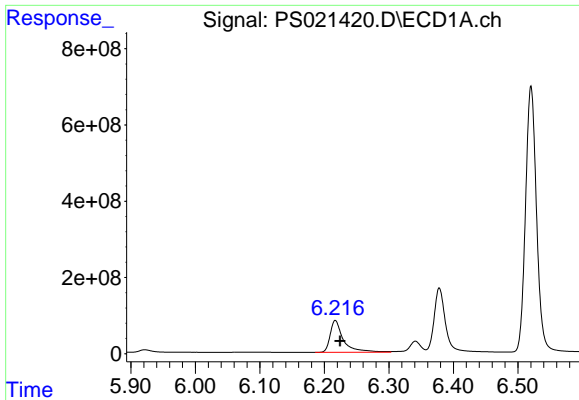
#2 3,5-DICHLOROBENZOIC ACID

R.T.: 5.750 min  
 Delta R.T.: -0.003 min  
 Response: 2734543978  
 Conc: 688.04 ng/ml



#2 3,5-DICHLOROBENZOIC ACID

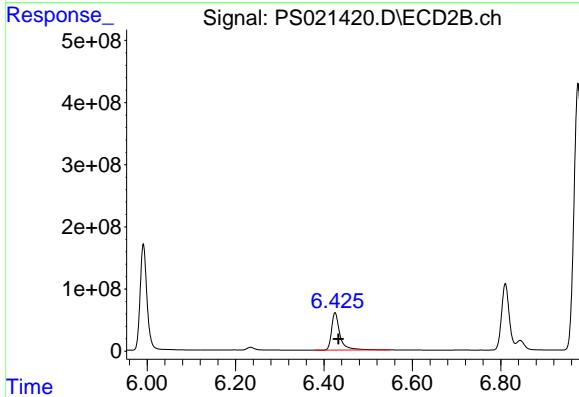
R.T.: 5.991 min  
 Delta R.T.: -0.004 min  
 Response: 1833456851  
 Conc: 700.65 ng/ml



#3 4-Nitrophenol

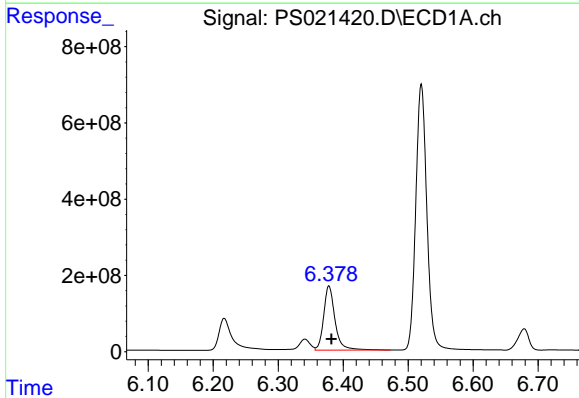
R.T.: 6.217 min  
Delta R.T.: -0.007 min  
Response: 1199946455  
Conc: 667.34 ng/ml

Instrument :  
ECD\_S  
ClientSampleId :



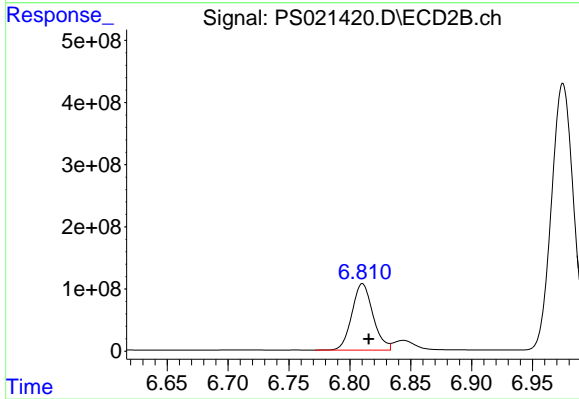
#3 4-Nitrophenol

R.T.: 6.425 min  
Delta R.T.: -0.007 min  
Response: 792421969  
Conc: 679.99 ng/ml



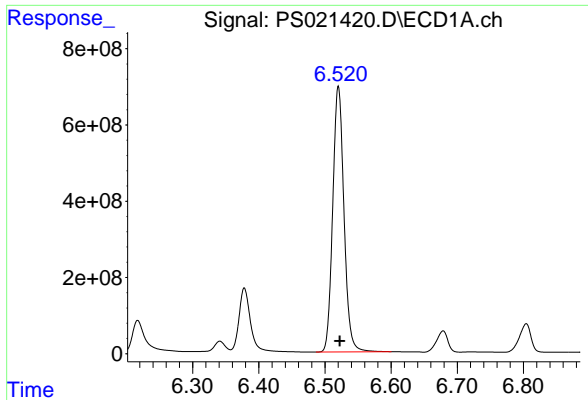
#4 2,4-DCAA

R.T.: 6.378 min  
Delta R.T.: -0.004 min  
Response: 2038465444  
Conc: 701.59 ng/ml



#4 2,4-DCAA

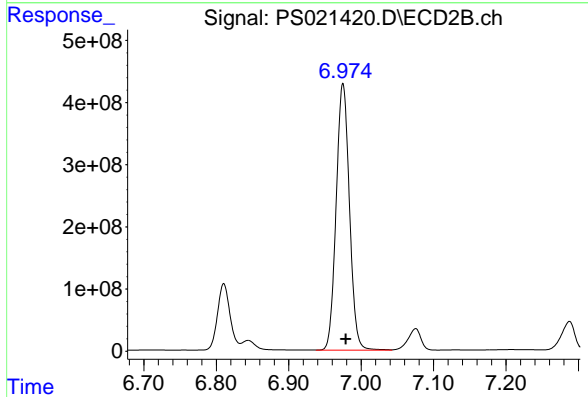
R.T.: 6.810 min  
Delta R.T.: -0.005 min  
Response: 1288600619  
Conc: 747.45 ng/ml



#5 DICAMBA

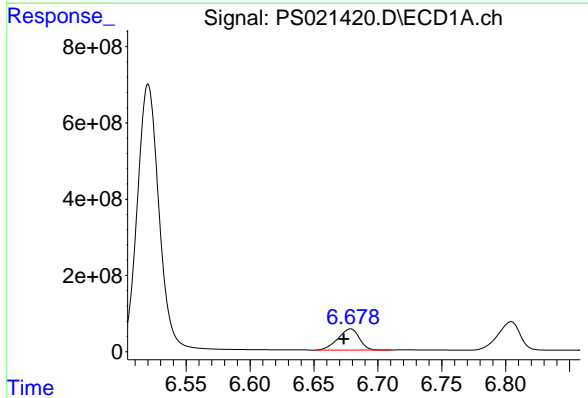
R.T.: 6.520 min  
 Delta R.T.: -0.002 min  
 Response: 822552562  
 Conc: 714.81 ng/ml

Instrument :  
 ECD\_S  
 ClientSampleId :



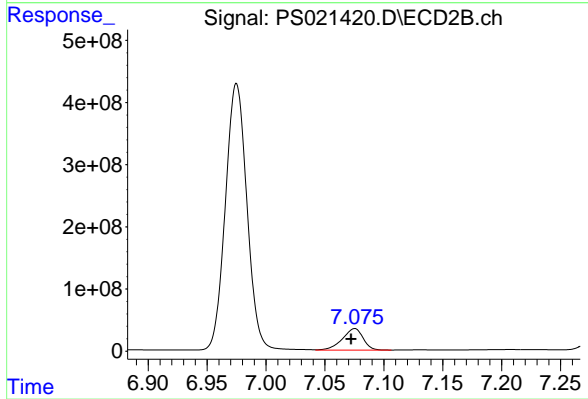
#5 DICAMBA

R.T.: 6.975 min  
 Delta R.T.: -0.004 min  
 Response: 5461490761  
 Conc: 715.12 ng/ml



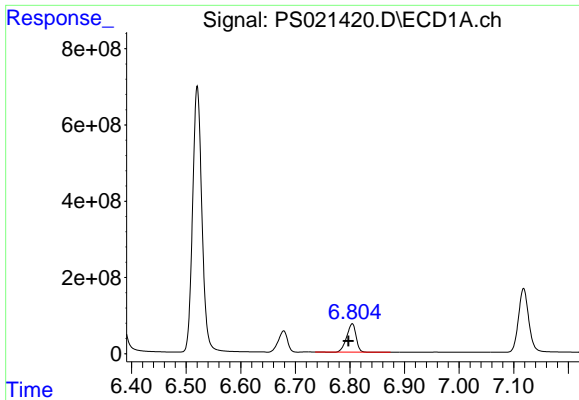
#6 MCP

R.T.: 6.678 min  
 Delta R.T.: 0.005 min  
 Response: 643610601  
 Conc: 68.93 ug/ml



#6 MCP

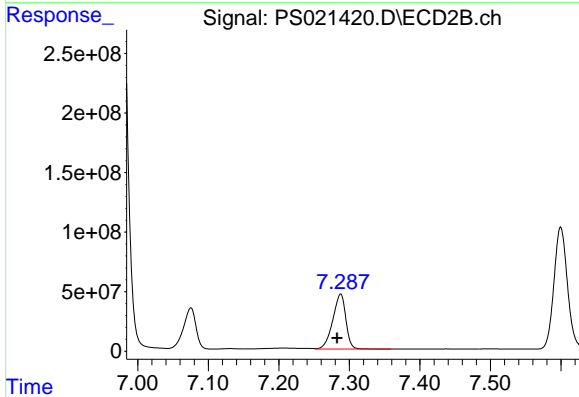
R.T.: 7.075 min  
 Delta R.T.: 0.003 min  
 Response: 423779219  
 Conc: 72.02 ug/ml



#7 MCPA

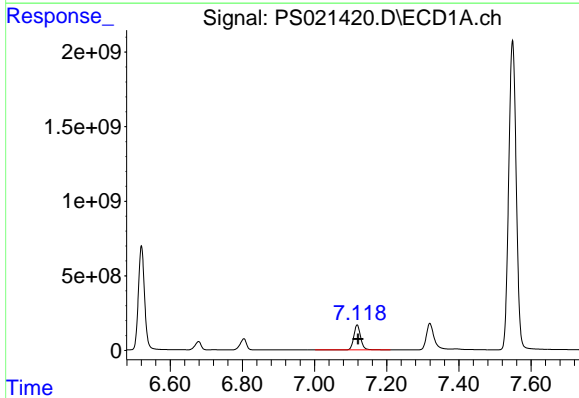
R.T.: 6.804 min  
 Delta R.T.: 0.007 min  
 Response: 884020745  
 Conc: 69.01 ug/ml

Instrument :  
 ECD\_S  
 ClientSampleId :



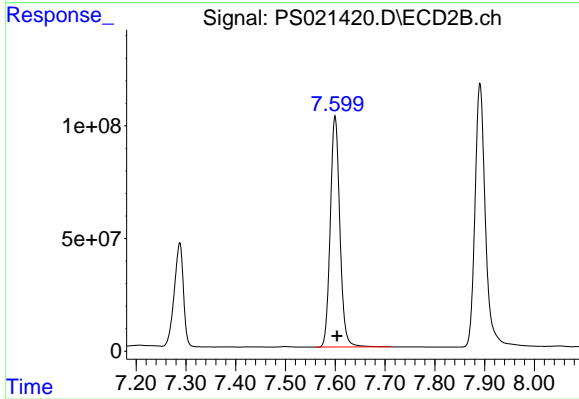
#7 MCPA

R.T.: 7.288 min  
 Delta R.T.: 0.005 min  
 Response: 597115325  
 Conc: 67.53 ug/ml



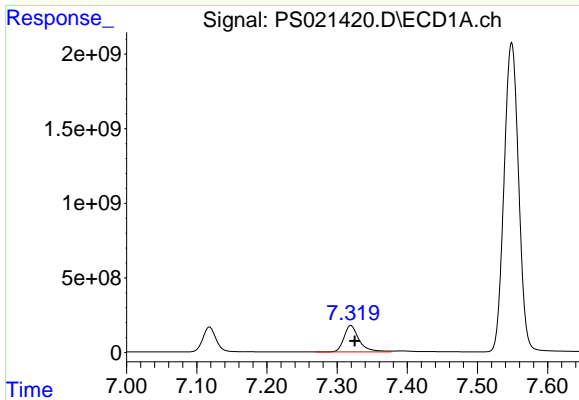
#8 DICHLORPROP

R.T.: 7.118 min  
 Delta R.T.: -0.002 min  
 Response: 2175869209  
 Conc: 692.12 ng/ml



#8 DICHLORPROP

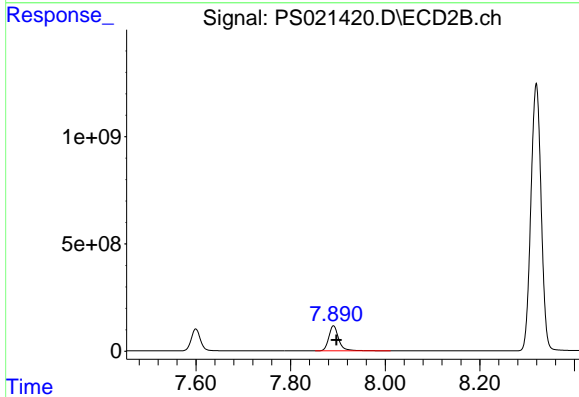
R.T.: 7.600 min  
 Delta R.T.: -0.004 min  
 Response: 1371749460  
 Conc: 696.45 ng/ml



#9 2,4-D

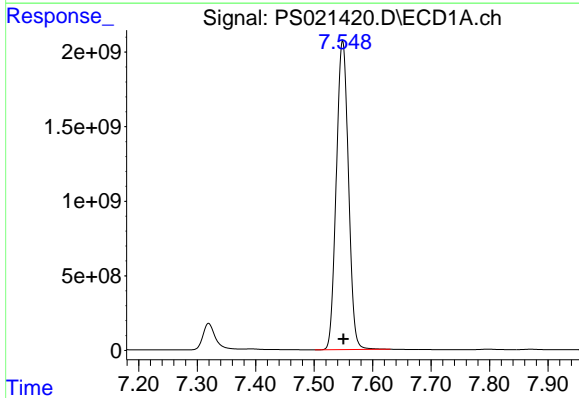
R.T.: 7.320 min  
 Delta R.T.: -0.006 min  
 Response: 2651296464  
 Conc: 693.85 ng/ml

Instrument :  
 ECD\_S  
 ClientSampleId :



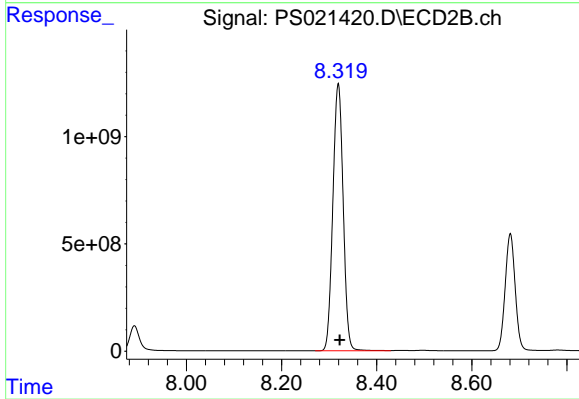
#9 2,4-D

R.T.: 7.891 min  
 Delta R.T.: -0.006 min  
 Response: 1701276896  
 Conc: 705.25 ng/ml



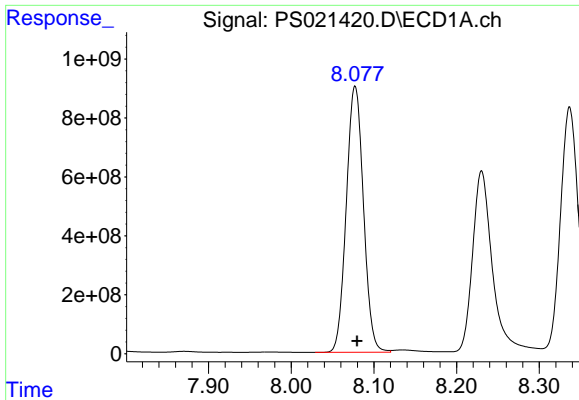
#10 Pentachlorophenol

R.T.: 7.549 min  
 Delta R.T.: -0.001 min  
 Response: 29838714077  
 Conc: 733.76 ng/ml



#10 Pentachlorophenol

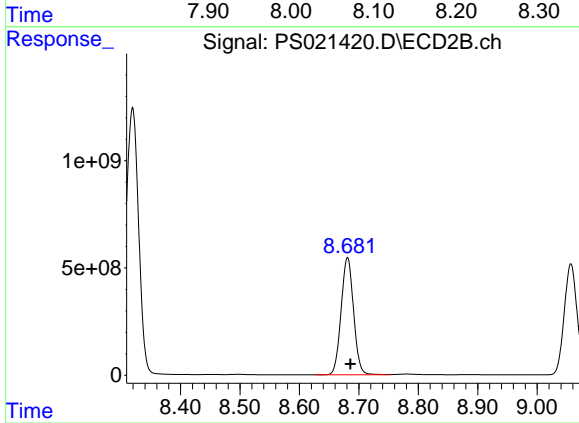
R.T.: 8.319 min  
 Delta R.T.: -0.003 min  
 Response: 18728798305  
 Conc: 710.44 ng/ml



#11 2,4,5-TP (SILVEX)

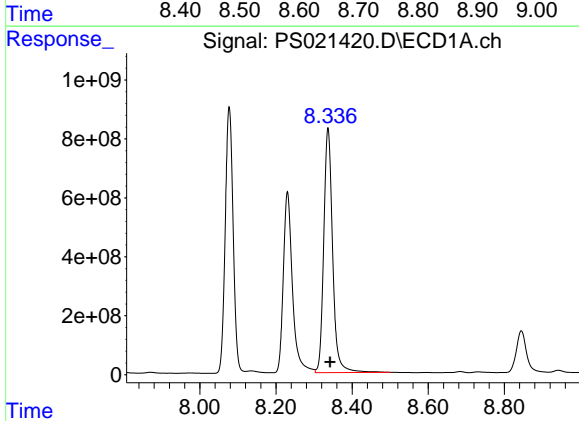
R.T.: 8.077 min  
 Delta R.T.: -0.002 min  
 Response: 13038623057  
 Conc: 705.15 ng/ml

Instrument :  
 ECD\_S  
 ClientSampleId :



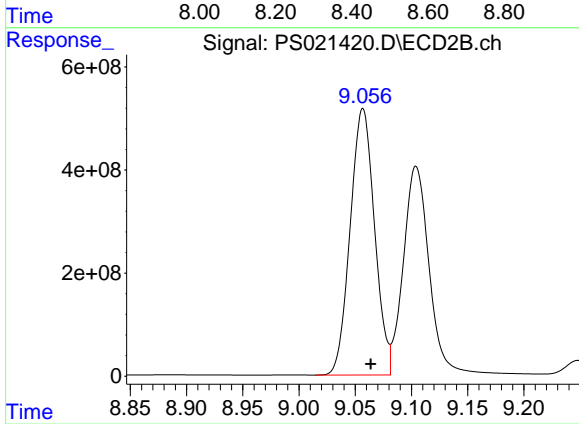
#11 2,4,5-TP (SILVEX)

R.T.: 8.681 min  
 Delta R.T.: -0.005 min  
 Response: 7971855913  
 Conc: 711.87 ng/ml



#12 2,4,5-T

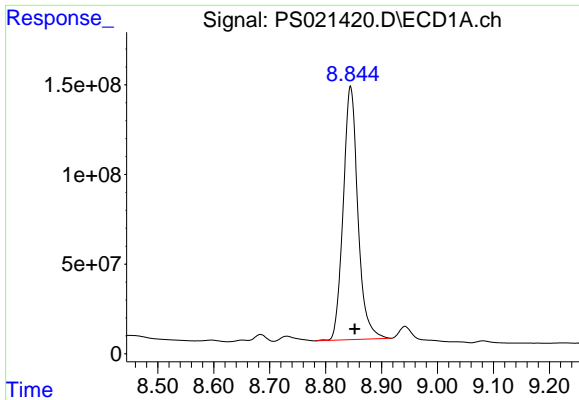
R.T.: 8.337 min  
 Delta R.T.: -0.005 min  
 Response: 13375358655  
 Conc: 708.91 ng/ml



#12 2,4,5-T

R.T.: 9.057 min  
 Delta R.T.: -0.007 min  
 Response: 7792870833  
 Conc: 718.99 ng/ml

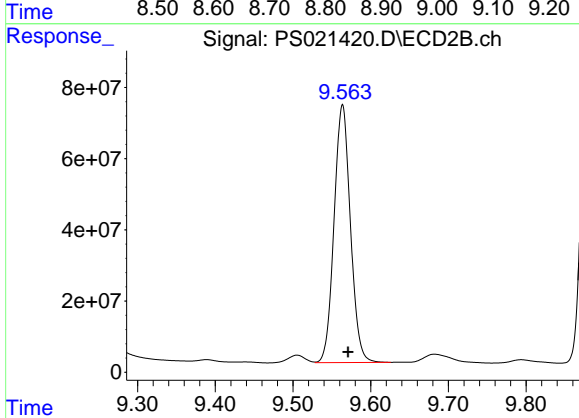




#13 2,4-DB

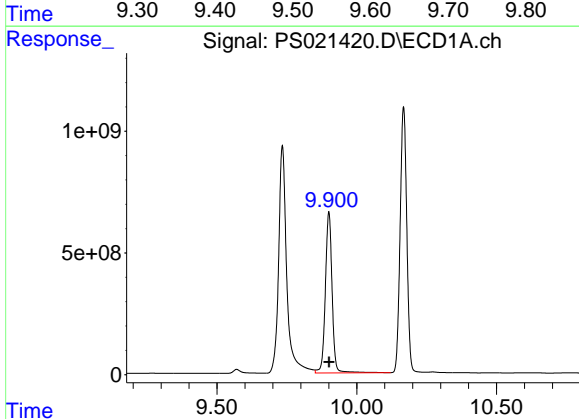
R.T.: 8.845 min  
 Delta R.T.: -0.008 min  
 Response: 2572463626  
 Conc: 702.43 ng/ml

Instrument :  
 ECD\_S  
 ClientSampleId :



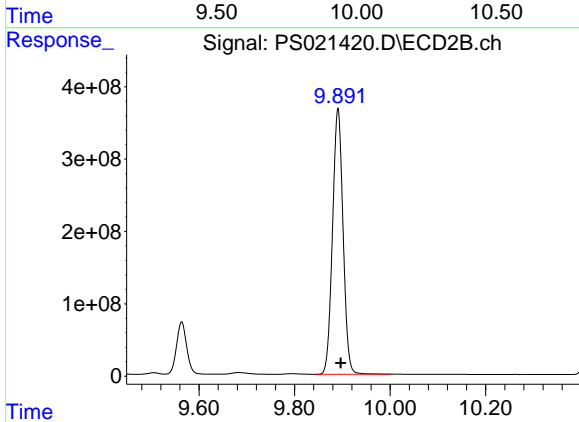
#13 2,4-DB

R.T.: 9.564 min  
 Delta R.T.: -0.007 min  
 Response: 1059893540  
 Conc: 737.32 ng/ml



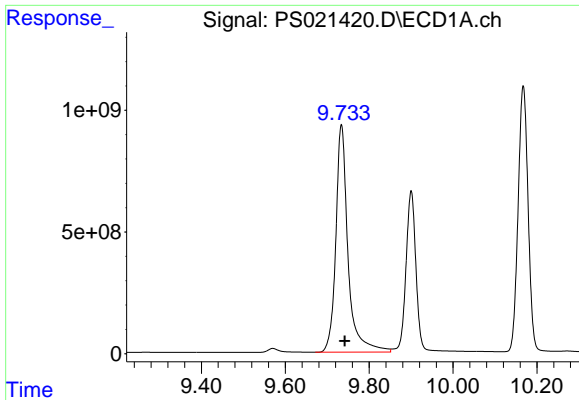
#14 DINOSEB

R.T.: 9.900 min  
 Delta R.T.: 0.000 min  
 Response: 11081404860  
 Conc: 695.51 ng/ml



#14 DINOSEB

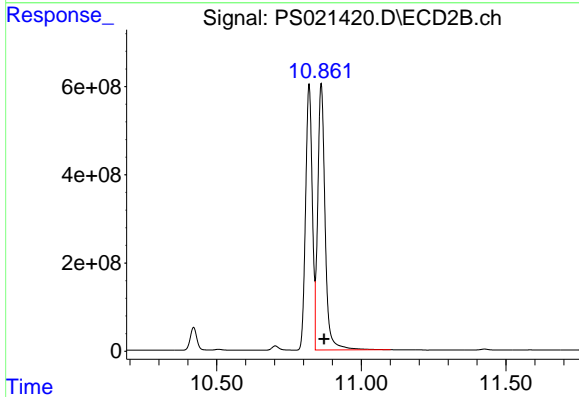
R.T.: 9.891 min  
 Delta R.T.: -0.006 min  
 Response: 5607555861  
 Conc: 708.99 ng/ml



#15 Picloram

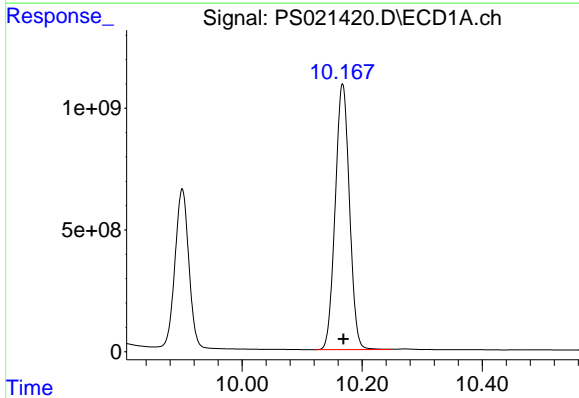
R.T.: 9.734 min  
 Delta R.T.: -0.008 min  
 Response: 18912217629  
 Conc: 660.34 ng/ml

Instrument :  
 ECD\_S  
 ClientSampleId :



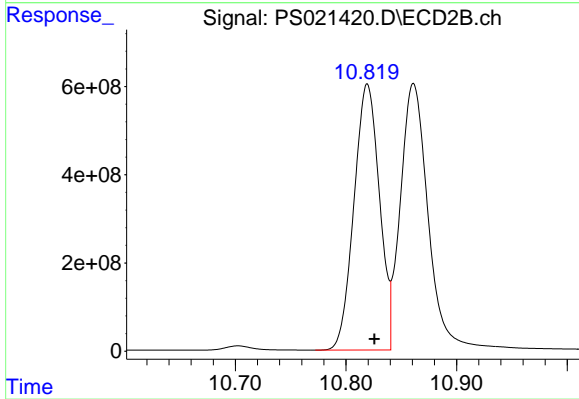
#15 Picloram

R.T.: 10.861 min  
 Delta R.T.: -0.011 min  
 Response: 10723993847  
 Conc: 659.46 ng/ml



#16 DCPA

R.T.: 10.167 min  
 Delta R.T.: -0.001 min  
 Response: 17993329211  
 Conc: 706.52 ng/ml



#16 DCPA

R.T.: 10.819 min  
 Delta R.T.: -0.006 min  
 Response: 9641094368  
 Conc: 710.56 ng/ml