

Data Path : Z:\pestpcbsrv\HPCHEM1\ECD_S\Data\PS121120\
 Data File : PS013474.D
 Signal(s) : Signal #1: ECD1A.ch Signal #2: ECD2B.ch
 Acq On : 11 Dec 2020 19:51
 Operator : DD\AJ
 Sample : L5009-06
 Misc :
 ALS Vial : 9 Sample Multiplier: 1

Instrument :
 ECD_S
 ClientSampleId :
 KENS-B5-120920-DP

Integration File signal 1: autoint1.e
 Integration File signal 2: autoint2.e
 Quant Time: Dec 12 03:35:29 2020
 Quant Method : Z:\pestpcbsrv\HPCHEM1\ECD_S\Method\PS120220.M
 Quant Title : 8080.M
 QLast Update : Thu Dec 03 02:59:27 2020
 Response via : Initial Calibration
 Integrator: ChemStation

Volume Inj. : 2 µl
 Signal #1 Phase : Rtx-CLPesticides Signal #2 Phase: Rtx-CLPesticides2
 Signal #1 Info : 30M x 0.32mm x0.5 Signal #2 Info : 30M x 0.32mm x 0.25µm

Compound	RT#1	RT#2	Resp#1	Resp#2	ng/ml	ng/ml

System Monitoring Compounds						
4) S 2,4-DCAA	7.211	6.913	272.2E6	128.3E6	292.370	326.158
Target Compounds						
1) T Dalapon	2.991	2.587	75770218	75006433	70.536	142.725 #
2) T 3,5-DICHL...	0.000	6.095	0	28762109	N.D.	46.288
3) T 4-Nitroph...	6.984f	0.000	2664268	0	5.913	N.D. #
5) T DICAMBA	0.000	7.048	0	6324688	N.D.	3.763
6) T MCPP	7.562	0.000	7543052	0	2.778	N.D. #
7) T MCPA	7.699	7.371	8780466	24413503	2.246	11.739 #
8) T DICHLORPROP	0.000	7.738	0	15157679	N.D.	33.916
9) T 2,4-D	8.277f	0.000	7011389	0	6.965	N.D. #
10) T Pentachlo...	8.683f	0.000	27347397	0	2.040	N.D. #
11) T 2,4,5-TP ...	0.000	8.758	0	26740422	N.D.	11.390
12) T 2,4,5-T	9.402f	0.000	35933357	0	6.499	N.D. #
14) T DINOSEB	11.143	10.024	27078013	12560768	6.390	7.599
15) T Picloram	10.974	10.963	14609467	9708356	2.121	2.788 #
16) T DCPA	11.505f	10.916	-18577079	13645401	N.D.	4.487

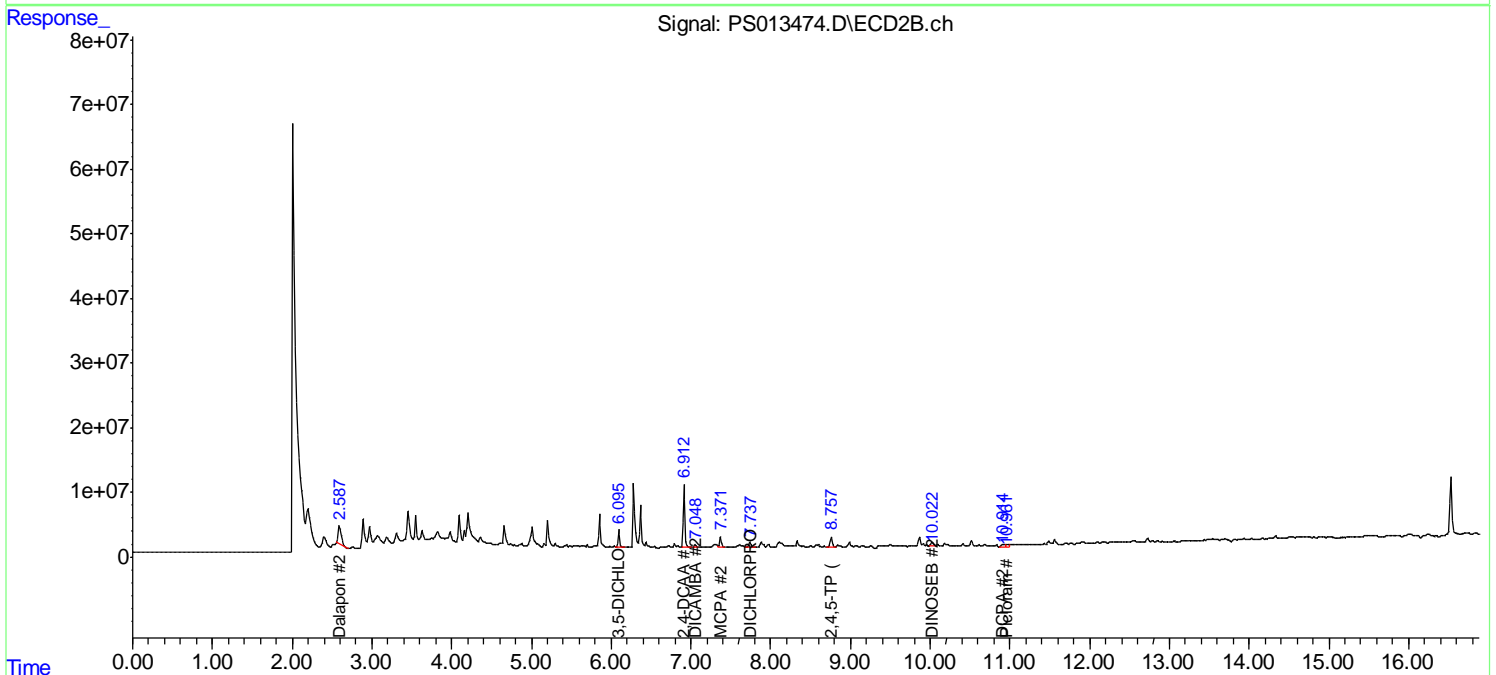
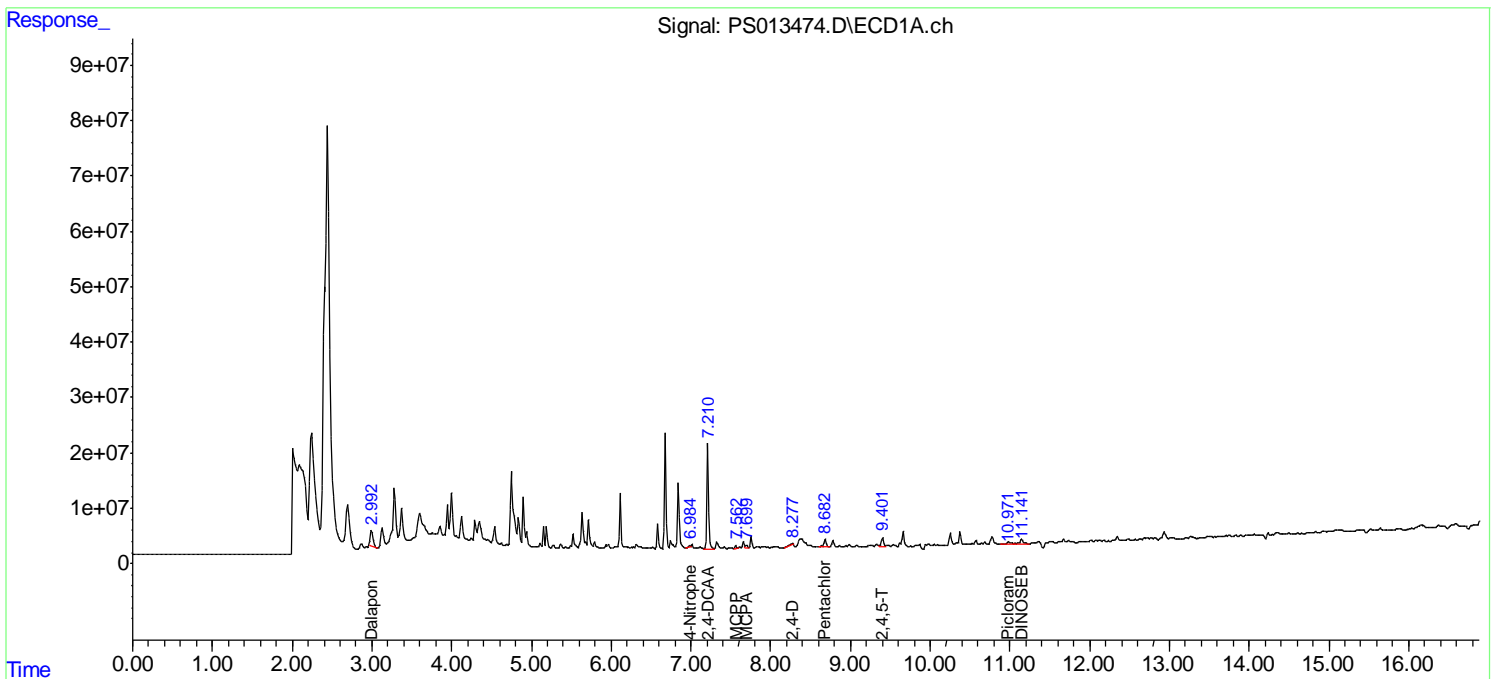
(f)=RT Delta > 1/2 Window (#)=Amounts differ by > 25% (m)=manual int.

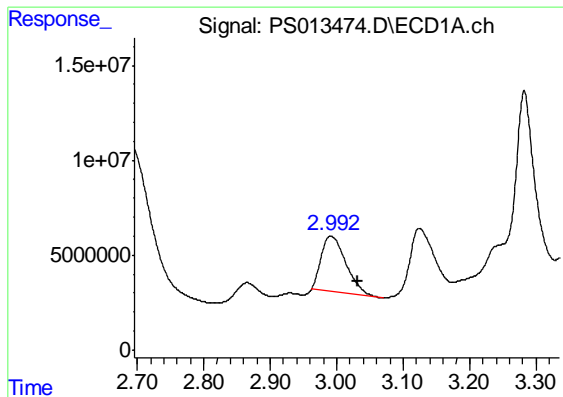
Data Path : Z:\pestpcbsrv\HPCHEM1\ECD_S\Data\PS121120\
 Data File : PS013474.D
 Signal(s) : Signal #1: ECD1A.ch Signal #2: ECD2B.ch
 Acq On : 11 Dec 2020 19:51
 Operator : DD\AJ
 Sample : L5009-06
 Misc :
 ALS Vial : 9 Sample Multiplier: 1

Instrument :
 ECD_S
 ClientSampleId :
 KENS-B5-120920-DP

Integration File signal 1: autoint1.e
 Integration File signal 2: autoint2.e
 Quant Time: Dec 12 03:35:29 2020
 Quant Method : Z:\pestpcbsrv\HPCHEM1\ECD_S\Method\PS120220.M
 Quant Title : 8080.M
 QLast Update : Thu Dec 03 02:59:27 2020
 Response via : Initial Calibration
 Integrator: ChemStation

Volume Inj. : 2 µl
 Signal #1 Phase : Rtx-CLPesticides Signal #2 Phase: Rtx-CLPesticides2
 Signal #1 Info : 30M x 0.32mm x0.5 Signal #2 Info : 30M x 0.32mm x 0.25µm

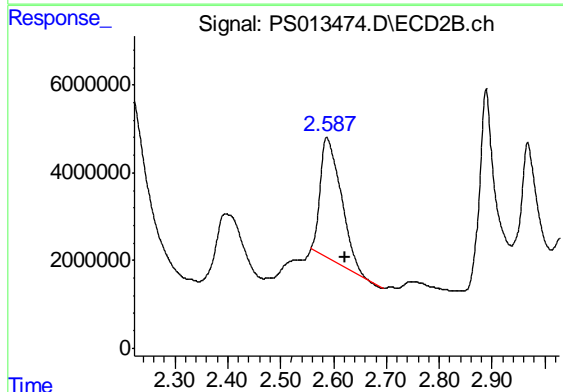




#1 Dalapon

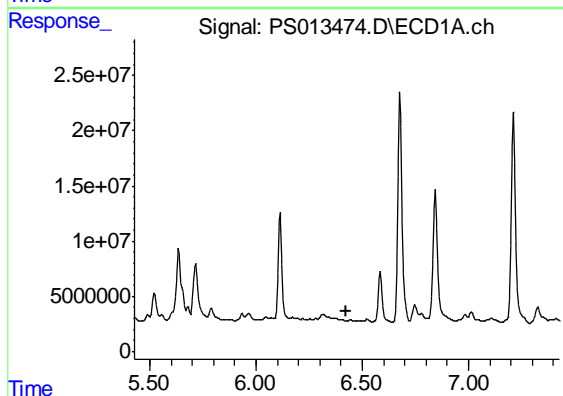
R.T.: 2.991 min
 Delta R.T.: -0.040 min
 Response: 75770218
 Conc: 70.54 ng/ml

Instrument :
 ECD_S
 ClientSampleId :
 KENS-B5-120920-DP



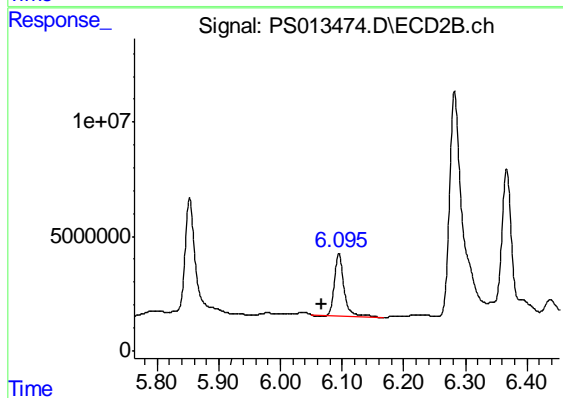
#1 Dalapon

R.T.: 2.587 min
 Delta R.T.: -0.035 min
 Response: 75006433
 Conc: 142.73 ng/ml



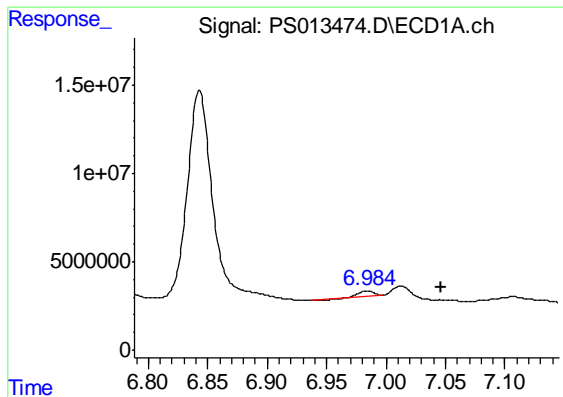
#2 3,5-DICHLOROBENZOIC ACID

R.T.: 0.000 min
 Exp R.T. : 6.428 min
 Response: 0
 Conc: N.D.



#2 3,5-DICHLOROBENZOIC ACID

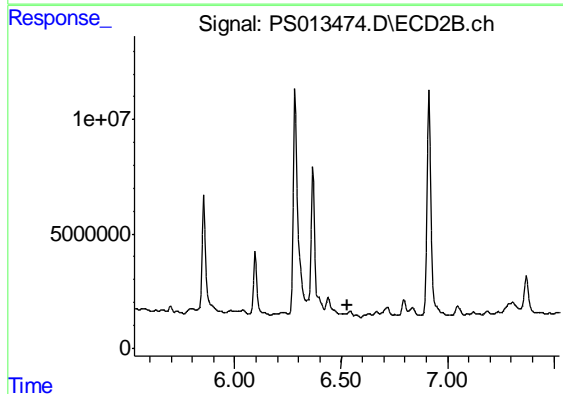
R.T.: 6.095 min
 Delta R.T.: 0.027 min
 Response: 28762109
 Conc: 46.29 ng/ml



#3 4-Nitrophenol

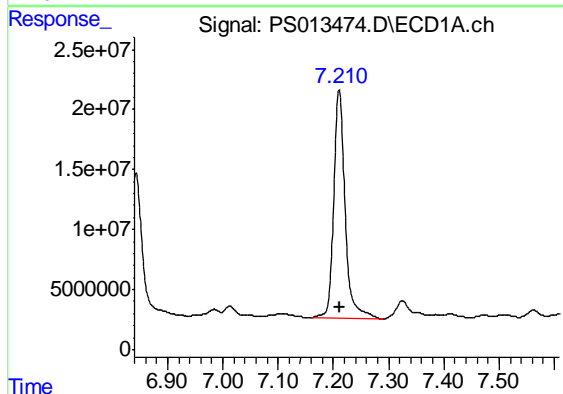
R.T.: 6.984 min
 Delta R.T.: -0.061 min
 Response: 2664268
 Conc: 5.91 ng/ml

Instrument :
 ECD_S
 ClientSampleId :
 KENS-B5-120920-DP



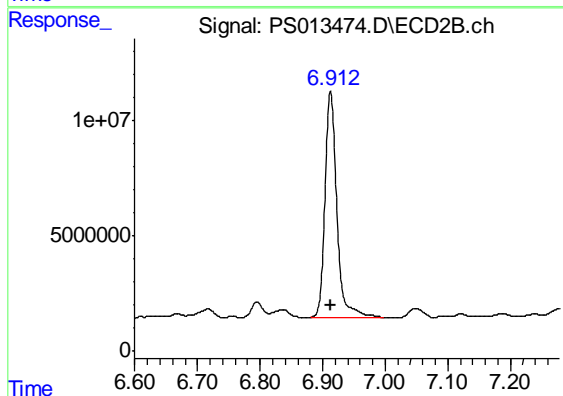
#3 4-Nitrophenol

R.T.: 0.000 min
 Exp R.T. : 6.527 min
 Response: 0
 Conc: N.D.



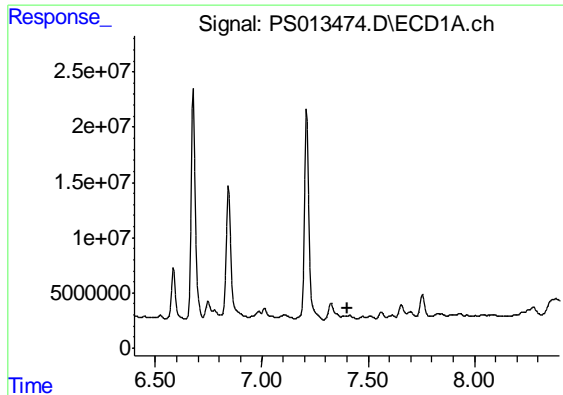
#4 2,4-DCAA

R.T.: 7.211 min
 Delta R.T.: 0.000 min
 Response: 272213694
 Conc: 292.37 ng/ml



#4 2,4-DCAA

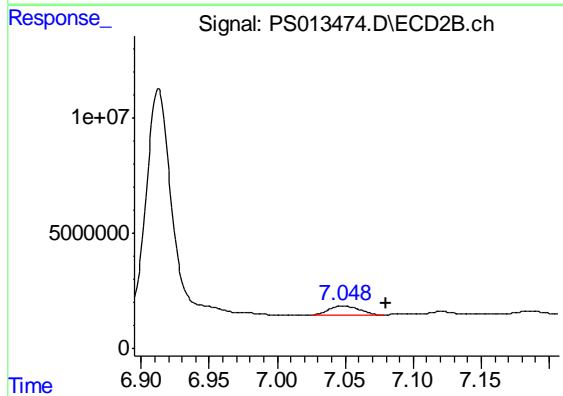
R.T.: 6.913 min
 Delta R.T.: -0.001 min
 Response: 128297970
 Conc: 326.16 ng/ml



#5 DICAMBA

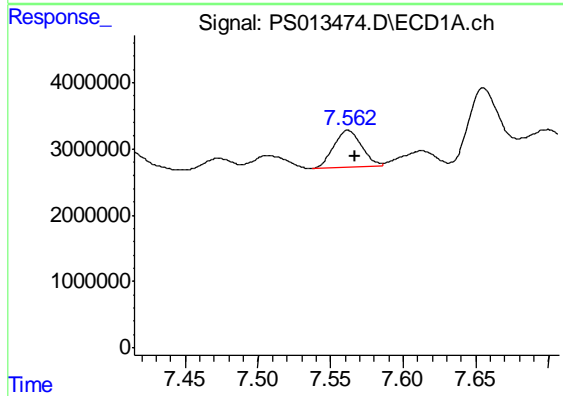
R.T.: 0.000 min
 Exp R.T. : 7.401 min
 Response: 0
 Conc: N.D.

Instrument :
 ECD_S
 ClientSampleId :
 KENS-B5-120920-DP



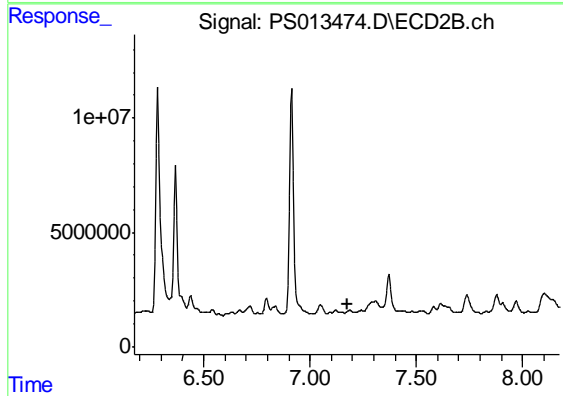
#5 DICAMBA

R.T.: 7.048 min
 Delta R.T.: -0.032 min
 Response: 6324688
 Conc: 3.76 ng/ml



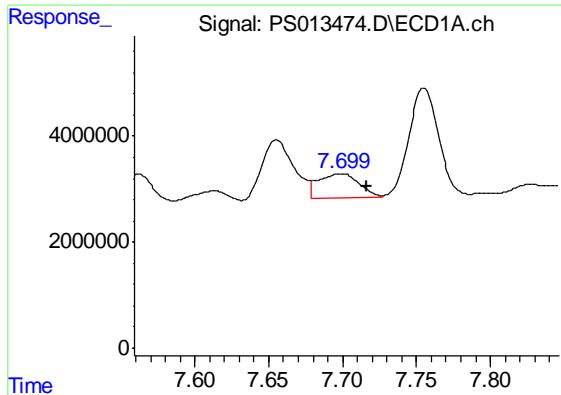
#6 MCPP

R.T.: 7.562 min
 Delta R.T.: -0.005 min
 Response: 7543052
 Conc: 2.78 ug/ml



#6 MCPP

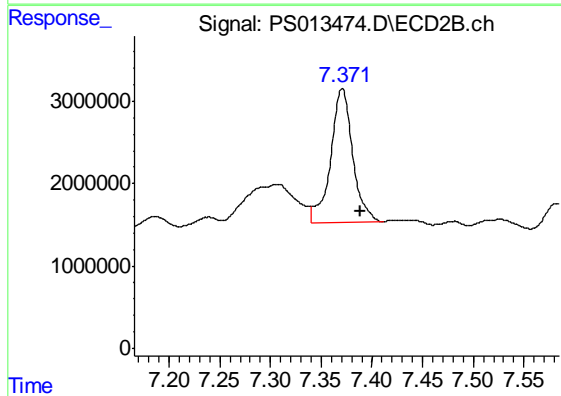
R.T.: 0.000 min
 Exp R.T. : 7.174 min
 Response: 0
 Conc: N.D.



#7 MCPA

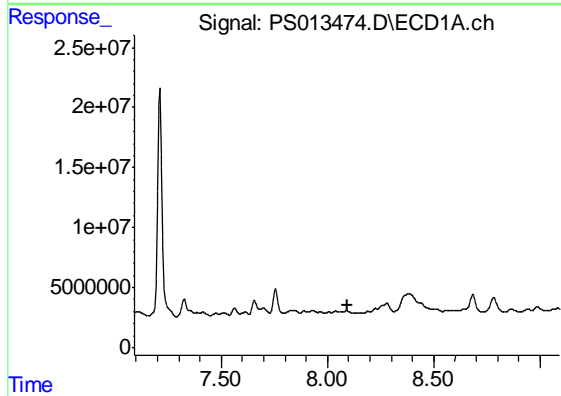
R.T.: 7.699 min
 Delta R.T.: -0.018 min
 Response: 8780466
 Conc: 2.25 ug/ml

Instrument :
 ECD_S
 ClientSampleId :
 KENS-B5-120920-DP



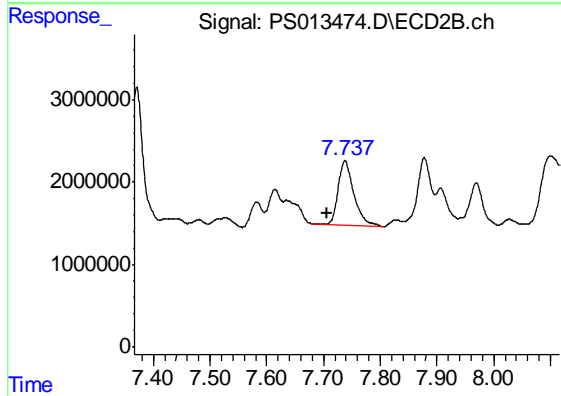
#7 MCPA

R.T.: 7.371 min
 Delta R.T.: -0.018 min
 Response: 24413503
 Conc: 11.74 ug/ml



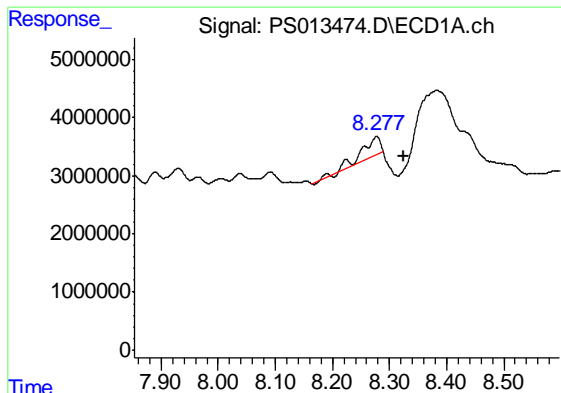
#8 DICHLORPROP

R.T.: 0.000 min
 Exp R.T. : 8.092 min
 Response: 0
 Conc: N.D.



#8 DICHLORPROP

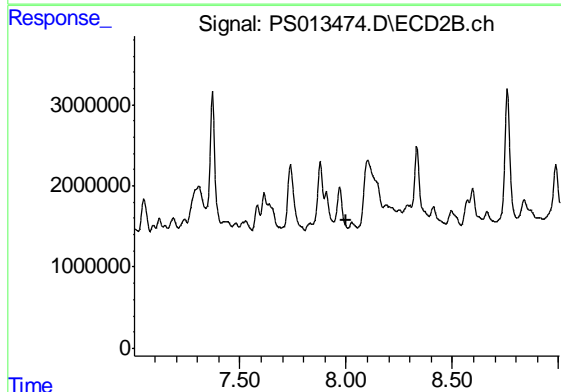
R.T.: 7.738 min
 Delta R.T.: 0.033 min
 Response: 15157679
 Conc: 33.92 ng/ml



#9 2,4-D

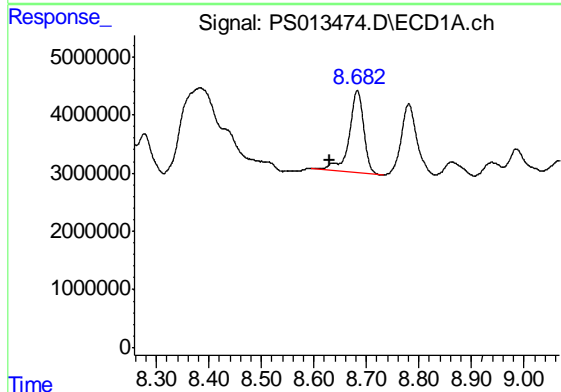
R.T.: 8.277 min
 Delta R.T.: -0.047 min
 Response: 7011389
 Conc: 6.96 ng/ml

Instrument :
 ECD_S
 ClientSampleId :
 KENS-B5-120920-DP



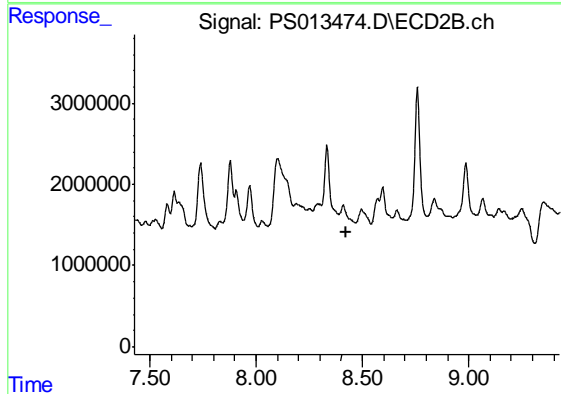
#9 2,4-D

R.T.: 0.000 min
 Exp R.T. : 8.004 min
 Response: 0
 Conc: N.D.



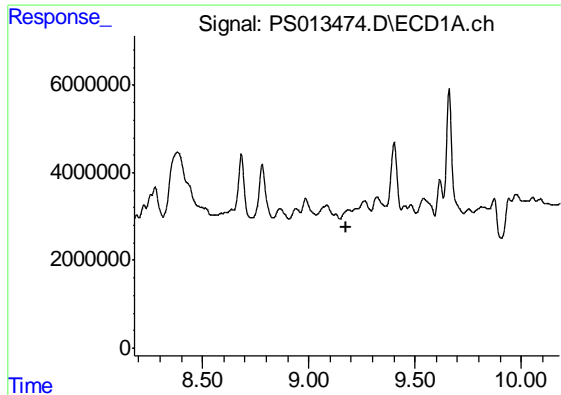
#10 Pentachlorophenol

R.T.: 8.683 min
 Delta R.T.: 0.053 min
 Response: 27347397
 Conc: 2.04 ng/ml



#10 Pentachlorophenol

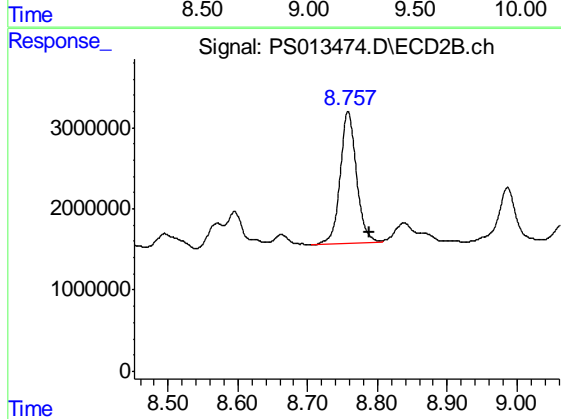
R.T.: 0.000 min
 Exp R.T. : 8.427 min
 Response: 0
 Conc: N.D.



#11 2,4,5-TP (SILVEX)

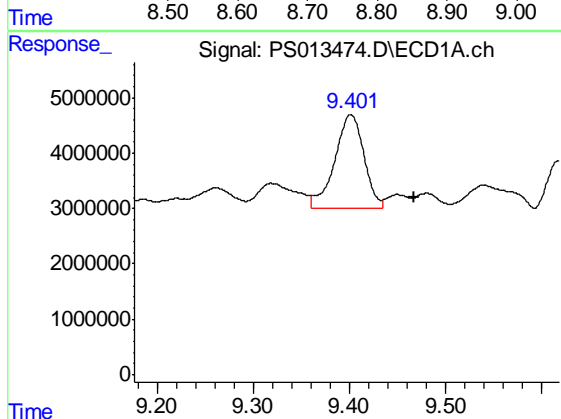
R.T.: 0.000 min
 Exp R.T. : 9.179 min
 Response: 0
 Conc: N.D.

Instrument :
 ECD_S
 ClientSampleId :
 KENS-B5-120920-DP



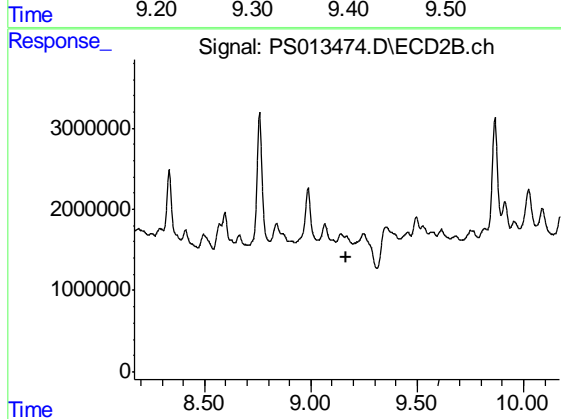
#11 2,4,5-TP (SILVEX)

R.T.: 8.758 min
 Delta R.T.: -0.031 min
 Response: 26740422
 Conc: 11.39 ng/ml



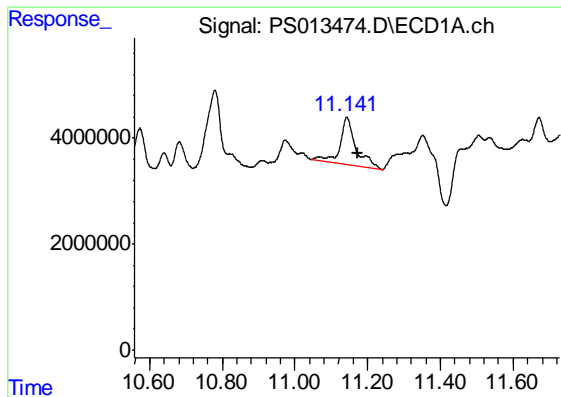
#12 2,4,5-T

R.T.: 9.402 min
 Delta R.T.: -0.065 min
 Response: 35933357
 Conc: 6.50 ng/ml



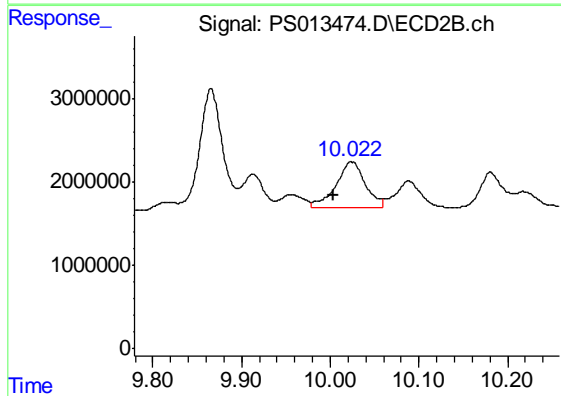
#12 2,4,5-T

R.T.: 0.000 min
 Exp R.T. : 9.170 min
 Response: 0
 Conc: N.D.

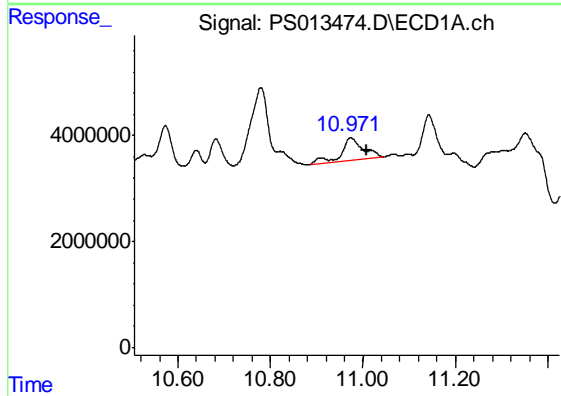


#14 DINOSEB
 R.T.: 11.143 min
 Delta R.T.: -0.029 min
 Response: 27078013
 Conc: 6.39 ng/ml

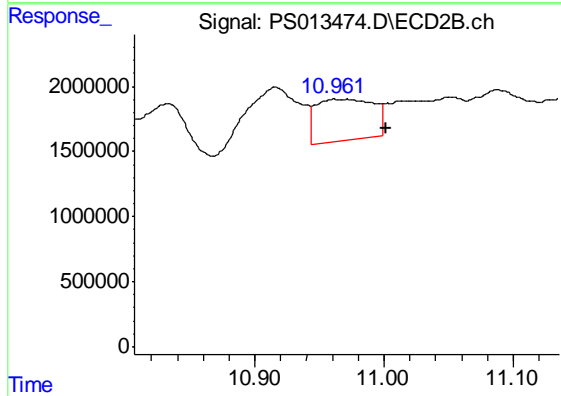
Instrument :
 ECD_S
 ClientSampleId :
 KENS-B5-120920-DP



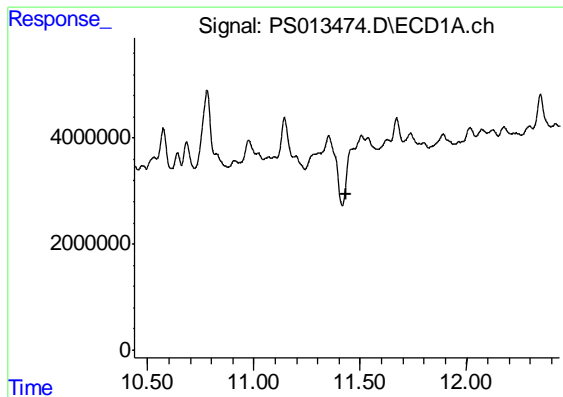
#14 DINOSEB
 R.T.: 10.024 min
 Delta R.T.: 0.020 min
 Response: 12560768
 Conc: 7.60 ng/ml



#15 Picloram
 R.T.: 10.974 min
 Delta R.T.: -0.035 min
 Response: 14609467
 Conc: 2.12 ng/ml



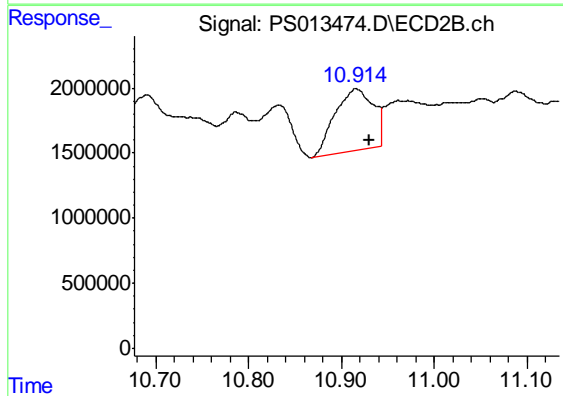
#15 Picloram
 R.T.: 10.963 min
 Delta R.T.: -0.038 min
 Response: 9708356
 Conc: 2.79 ng/ml



#16 DCPA

R.T.: 11.505 min
Delta R.T.: 0.068 min
Response: -18577079
Conc: N.D.

Instrument :
ECD_S
ClientSampleId :
KENS-B5-120920-DP



#16 DCPA

R.T.: 10.916 min
Delta R.T.: -0.014 min
Response: 13645401
Conc: 4.49 ng/ml