

Data Path : Z:\pestpcbsrv\HPCHEM1\ECD_S\Data\PS121121\
 Data File : PS017620.D
 Signal(s) : Signal #1: ECD1A.ch Signal #2: ECD2B.ch
 Acq On : 11 Dec 2021 15:45
 Operator : AJ\MA
 Sample : M4989-08
 Misc :
 ALS Vial : 16 Sample Multiplier: 1

Instrument :
 ECD_S
 ClientSampleId :
 P5-COMP

Integration File signal 1: autoint1.e
 Integration File signal 2: autoint2.e
 Quant Time: Dec 11 22:13:32 2021
 Quant Method : Z:\pestpcbsrv\HPCHEM1\ECD_S\Method\PS111821.M
 Quant Title : 8080.M
 QLast Update : Fri Nov 19 21:46:29 2021
 Response via : Initial Calibration
 Integrator: ChemStation

Volume Inj. : 2 µl
 Signal #1 Phase : Rtx-CLPesticides Signal #2 Phase: Rtx-CLPesticides2
 Signal #1 Info : 30M x 0.32mm x0.5 Signal #2 Info : 30M x 0.32mm x 0.25µm

	Compound	RT#1	RT#2	Resp#1	Resp#2	ng/ml	ng/ml

System Monitoring Compounds							
4) S	2,4-DCAA	7.145	6.737	648.5E6	268.9E6	412.511	453.746
Target Compounds							
1) T	Dalapon	2.940f	2.448f	20679901	14370969	8.834	21.223 #
2) T	3,5-DICHL...	6.315f	5.959	4496812	92002269	2.051	103.204 #
3) T	4-Nitroph...	6.979	0.000	18314507	0	21.896	N.D. #
5) T	DICAMBA	7.317	6.892	24293105	12916845	3.980	4.968
6) T	MCPP	7.495	0.000	16468585	0	3.549	N.D. #
7) T	MCPA	7.598f	7.203	16237675	16042745	2.477	5.476 #
9) T	2,4-D	8.326f	0.000	23088945	0	12.356	N.D. #
10) T	Pentachlo...	8.558	0.000	5126927	0	<MDL	N.D. #
12) T	2,4,5-T	9.386	9.031f	8478801	21356576	1.004	6.422 #
13) T	2,4-DB	9.961	0.000	20259952	0	11.907	N.D. #
14) T	DINOSEB	11.065	0.000	53212683	0	8.545	N.D. #
15) T	Picloram	10.946	10.789	99910948	42900174	8.195	9.831
16) T	DCPA	11.374	10.789f	2669191	42900174	<MDL	9.736 #

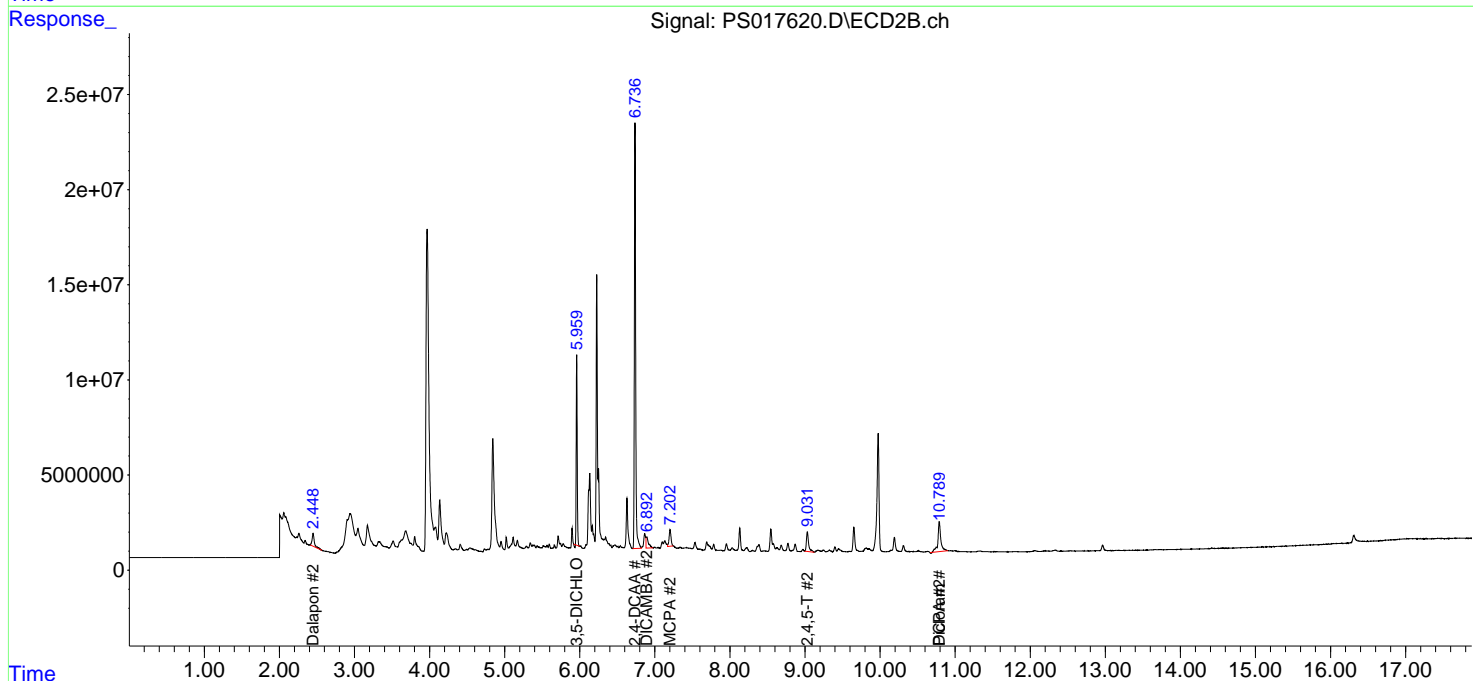
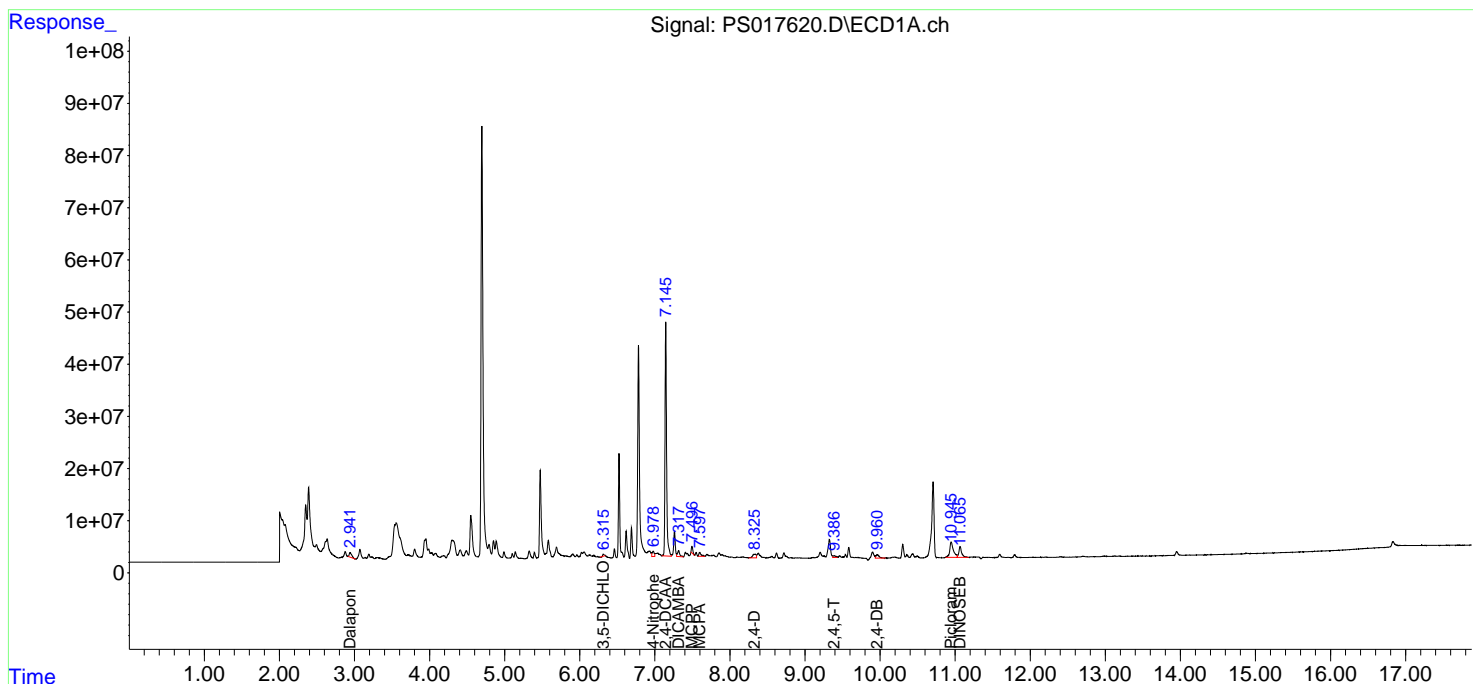
(f)=RT Delta > 1/2 Window (#)=Amounts differ by > 25% (m)=manual int.

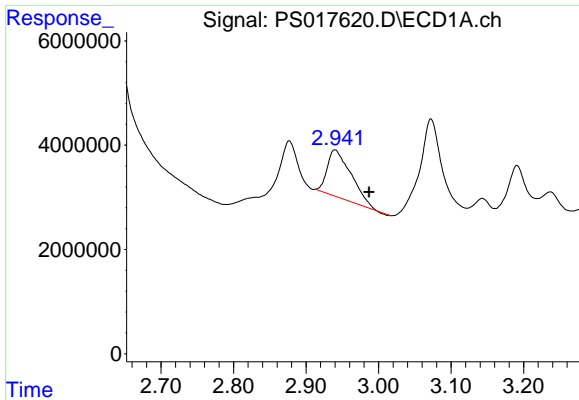
Data Path : Z:\pestpcbsrv\HPCHEM1\ECD_S\Data\PS121121\
 Data File : PS017620.D
 Signal(s) : Signal #1: ECD1A.ch Signal #2: ECD2B.ch
 Acq On : 11 Dec 2021 15:45
 Operator : AJ\MA
 Sample : M4989-08
 Misc :
 ALS Vial : 16 Sample Multiplier: 1

Instrument :
 ECD_S
 ClientSampleId :
 P5-COMP

Integration File signal 1: autoint1.e
 Integration File signal 2: autoint2.e
 Quant Time: Dec 11 22:13:32 2021
 Quant Method : Z:\pestpcbsrv\HPCHEM1\ECD_S\Method\PS111821.M
 Quant Title : 8080.M
 QLast Update : Fri Nov 19 21:46:29 2021
 Response via : Initial Calibration
 Integrator: ChemStation

Volume Inj. : 2 µl
 Signal #1 Phase : Rtx-CLPesticides Signal #2 Phase: Rtx-CLPesticides2
 Signal #1 Info : 30M x 0.32mm x0.5 Signal #2 Info : 30M x 0.32mm x 0.25µm

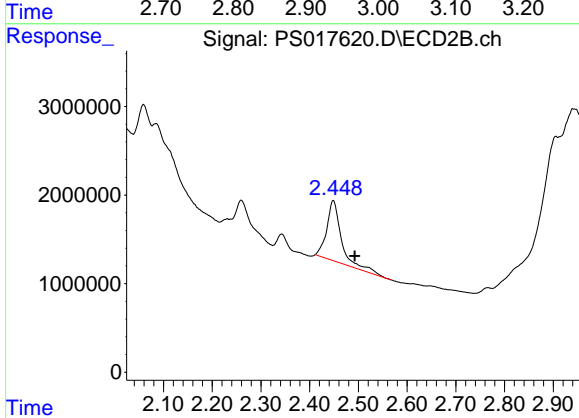




#1 Dalapon

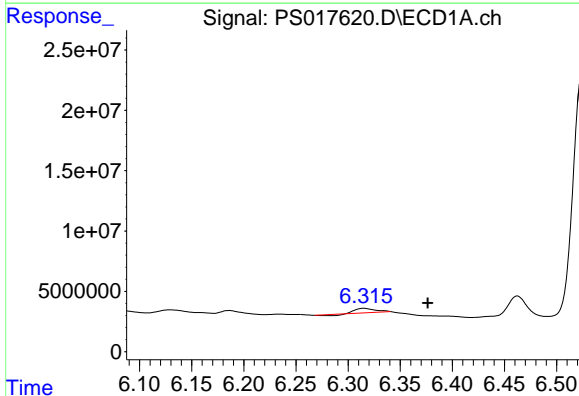
R.T.: 2.940 min
 Delta R.T.: -0.047 min
 Response: 20679901
 Conc: 8.83 ng/ml

Instrument :
 ECD_S
 ClientSampleId :
 P5-COMP



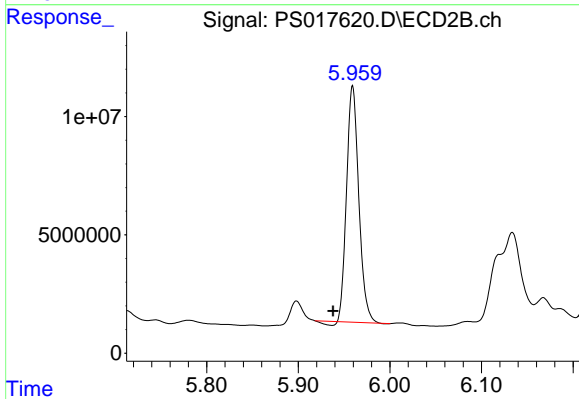
#1 Dalapon

R.T.: 2.448 min
 Delta R.T.: -0.044 min
 Response: 14370969
 Conc: 21.22 ng/ml



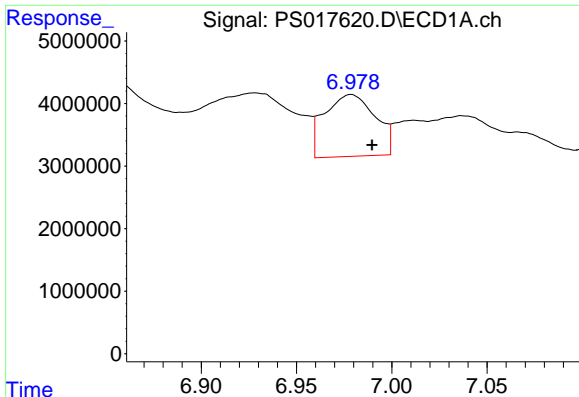
#2 3,5-DICHLOROBENZOIC ACID

R.T.: 6.315 min
 Delta R.T.: -0.062 min
 Response: 4496812
 Conc: 2.05 ng/ml



#2 3,5-DICHLOROBENZOIC ACID

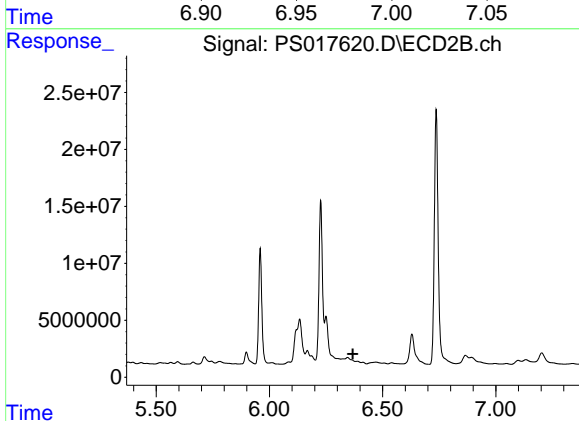
R.T.: 5.959 min
 Delta R.T.: 0.021 min
 Response: 92002269
 Conc: 103.20 ng/ml



#3 4-Nitrophenol

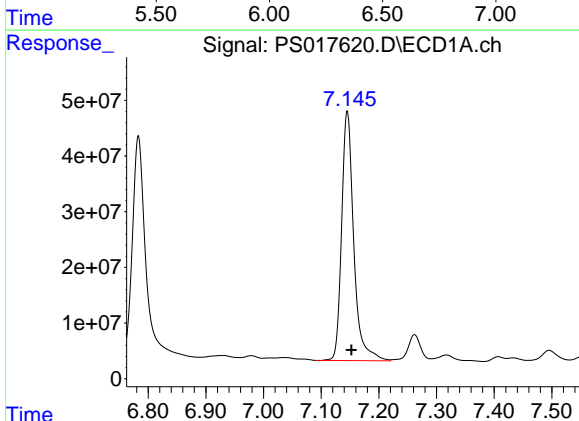
R.T.: 6.979 min
 Delta R.T.: -0.011 min
 Response: 18314507
 Conc: 21.90 ng/ml

Instrument :
 ECD_S
 ClientSampleId :
 P5-COMP



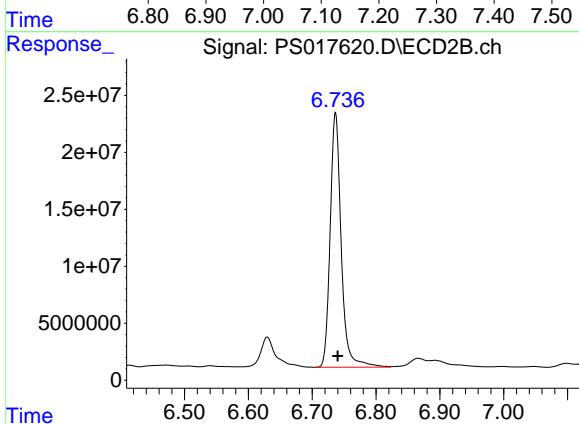
#3 4-Nitrophenol

R.T.: 0.000 min
 Exp R.T. : 6.369 min
 Response: 0
 Conc: N.D.



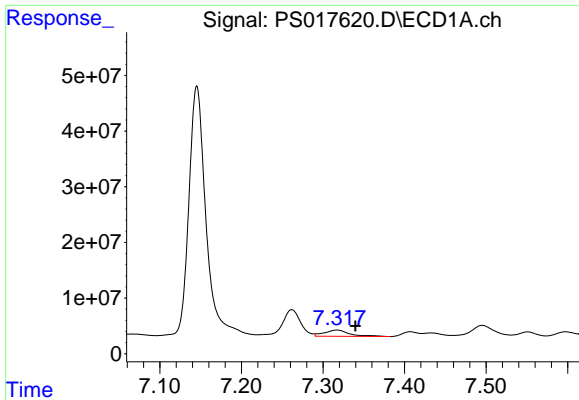
#4 2,4-DCAA

R.T.: 7.145 min
 Delta R.T.: -0.007 min
 Response: 648547597
 Conc: 412.51 ng/ml



#4 2,4-DCAA

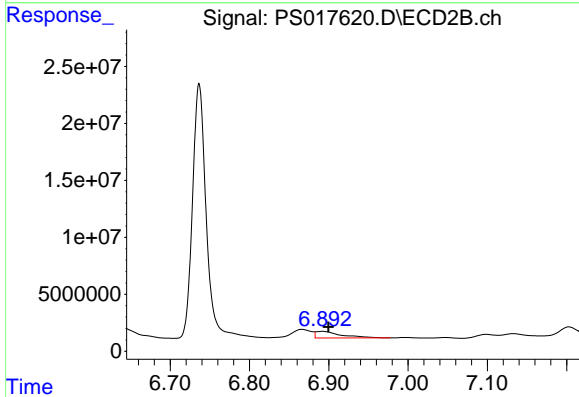
R.T.: 6.737 min
 Delta R.T.: -0.004 min
 Response: 268880043
 Conc: 453.75 ng/ml



#5 DICAMBA

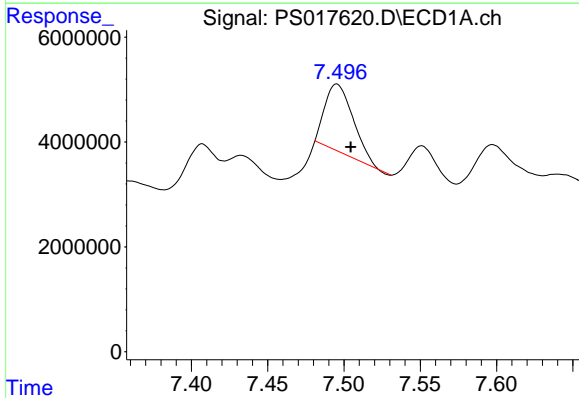
R.T.: 7.317 min
 Delta R.T.: -0.022 min
 Response: 24293105
 Conc: 3.98 ng/ml

Instrument :
 ECD_S
 ClientSampleId :
 P5-COMP



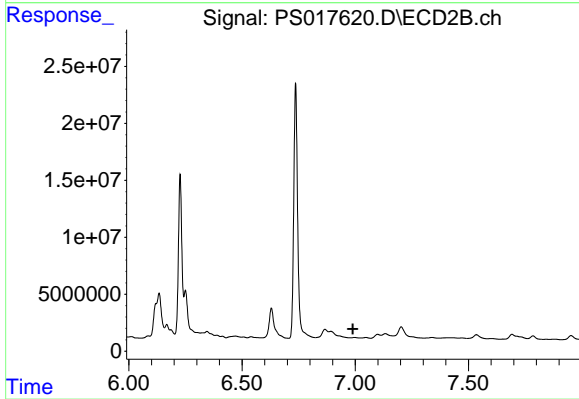
#5 DICAMBA

R.T.: 6.892 min
 Delta R.T.: -0.007 min
 Response: 12916845
 Conc: 4.97 ng/ml



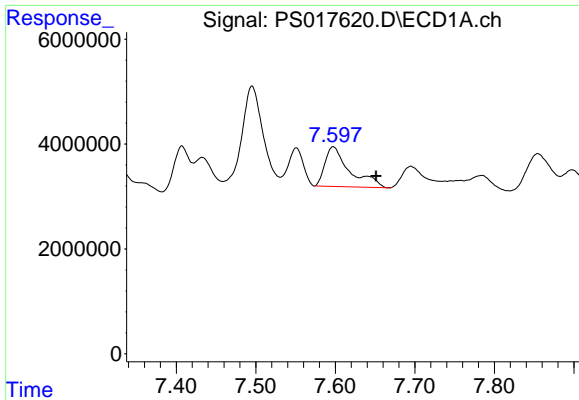
#6 MCP

R.T.: 7.495 min
 Delta R.T.: -0.009 min
 Response: 16468585
 Conc: 3.55 ug/ml



#6 MCP

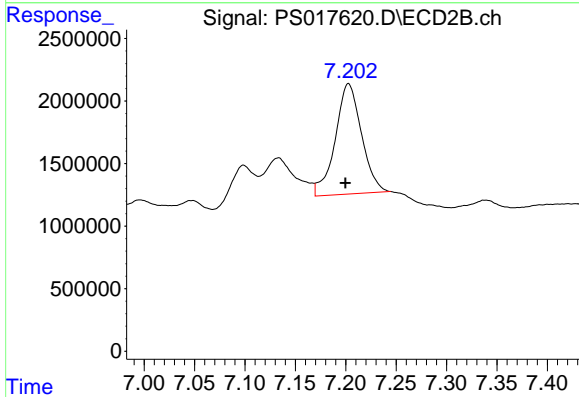
R.T.: 0.000 min
 Exp R.T.: 6.990 min
 Response: 0
 Conc: N.D.



#7 MCPA

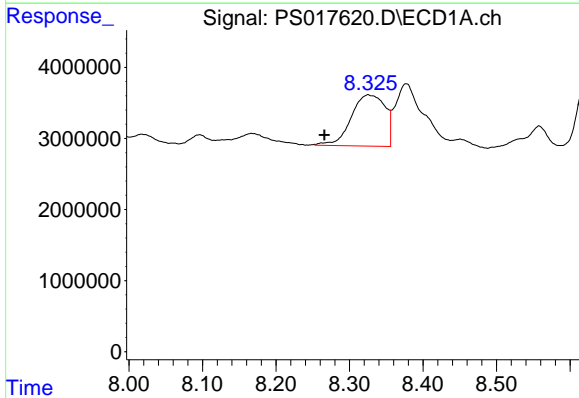
R.T.: 7.598 min
 Delta R.T.: -0.054 min
 Response: 16237675
 Conc: 2.48 ug/ml

Instrument :
 ECD_S
 ClientSampleId :
 P5-COMP



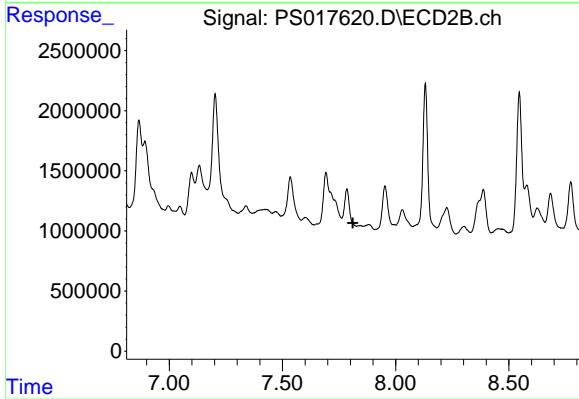
#7 MCPA

R.T.: 7.203 min
 Delta R.T.: 0.003 min
 Response: 16042745
 Conc: 5.48 ug/ml



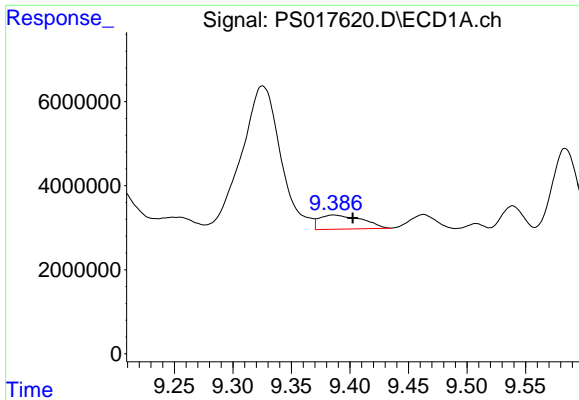
#9 2,4-D

R.T.: 8.326 min
 Delta R.T.: 0.060 min
 Response: 23088945
 Conc: 12.36 ng/ml



#9 2,4-D

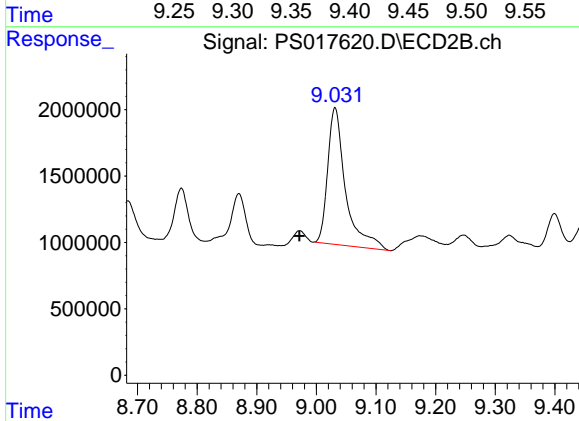
R.T.: 0.000 min
 Exp R.T.: 7.811 min
 Response: 0
 Conc: N.D.



#12 2,4,5-T

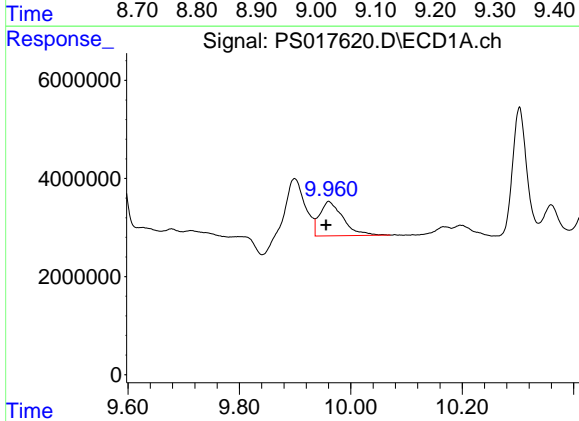
R.T.: 9.386 min
 Delta R.T.: -0.016 min
 Response: 8478801
 Conc: 1.00 ng/ml

Instrument :
 ECD_S
 ClientSampleId :
 P5-COMP



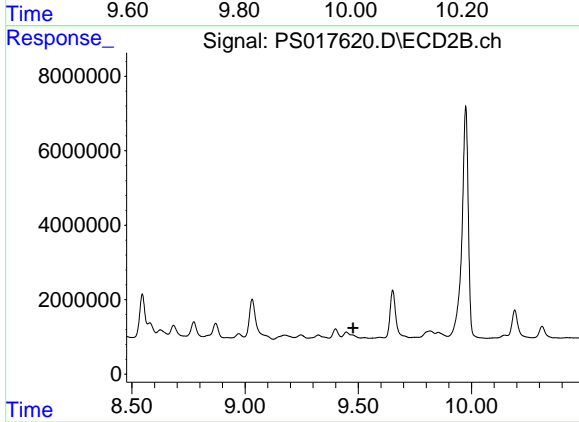
#12 2,4,5-T

R.T.: 9.031 min
 Delta R.T.: 0.060 min
 Response: 21356576
 Conc: 6.42 ng/ml



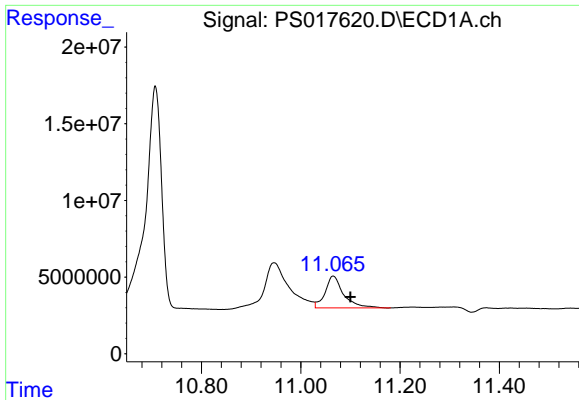
#13 2,4-DB

R.T.: 9.961 min
 Delta R.T.: 0.005 min
 Response: 20259952
 Conc: 11.91 ng/ml



#13 2,4-DB

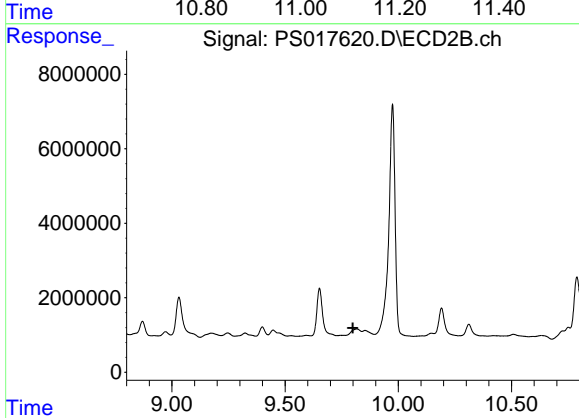
R.T.: 0.000 min
 Exp R.T. : 9.477 min
 Response: 0
 Conc: N.D.



#14 DINOSEB

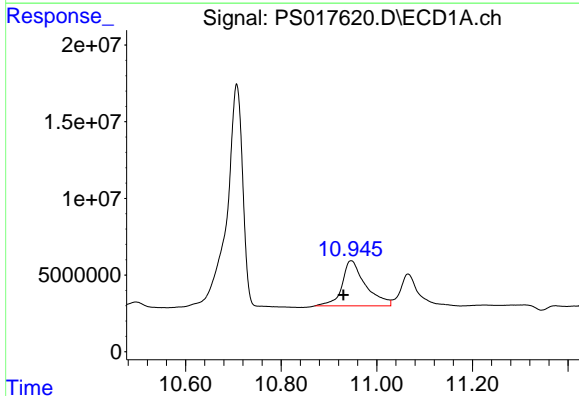
R.T.: 11.065 min
 Delta R.T.: -0.035 min
 Response: 53212683
 Conc: 8.54 ng/ml

Instrument :
 ECD_S
 ClientSampleId :
 P5-COMP



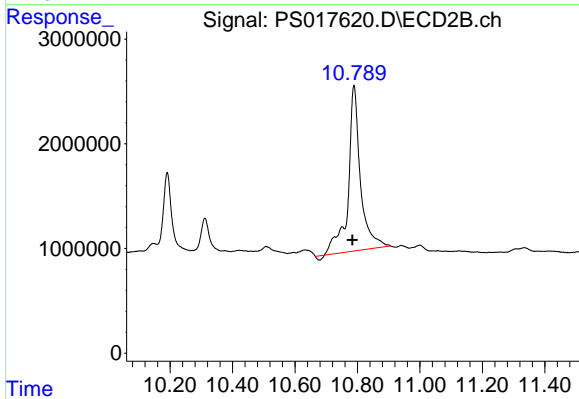
#14 DINOSEB

R.T.: 0.000 min
 Exp R.T. : 9.799 min
 Response: 0
 Conc: N.D.



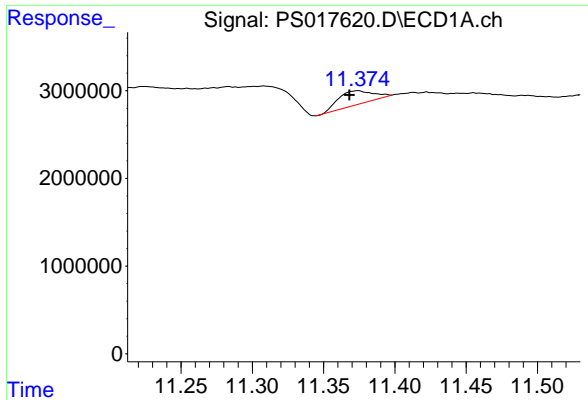
#15 Picloram

R.T.: 10.946 min
 Delta R.T.: 0.016 min
 Response: 99910948
 Conc: 8.19 ng/ml



#15 Picloram

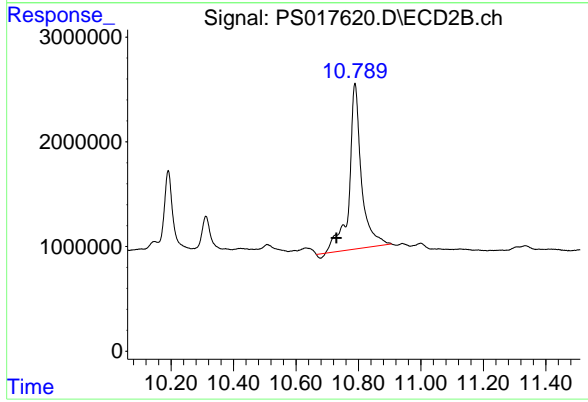
R.T.: 10.789 min
 Delta R.T.: 0.006 min
 Response: 42900174
 Conc: 9.83 ng/ml



#16 DCPA

R.T.: 11.374 min
 Delta R.T.: 0.006 min
 Response: 2669191
 Conc: N.D.

Instrument :
 ECD_S
 ClientSampleId :
 P5-COMP



#16 DCPA

R.T.: 10.789 min
 Delta R.T.: 0.060 min
 Response: 42900174
 Conc: 9.74 ng/ml