

Data Path : Z:\pestpcbsrv\HPCHEM1\ECD_S\Data\ps121222\
 Data File : PS021434.D
 Signal(s) : Signal #1: ECD1A.ch Signal #2: ECD2B.ch
 Acq On : 12 Dec 2022 20:36
 Operator : AR\AJ
 Sample : I.BLK
 Misc :
 ALS Vial : 2 Sample Multiplier: 1

Instrument :
 ECD_S
 ClientSampleId :
 I.BLK

Integration File signal 1: autoint1.e
 Integration File signal 2: autoint2.e
 Quant Time: Dec 13 02:30:00 2022
 Quant Method : Z:\pestpcbsrv\HPCHEM1\ECD_S\Method\PS120722.M
 Quant Title : 8080.M
 QLast Update : Wed Dec 07 15:59:29 2022
 Response via : Initial Calibration
 Integrator: ChemStation

Volume Inj. : 2 µl
 Signal #1 Phase : Rtx-CLPesticides Signal #2 Phase: Rtx-CLPesticides2
 Signal #1 Info : 30M x 0.32mm x0.5 Signal #2 Info : 30M x 0.32mm x 0.25µm

Compound	RT#1	RT#2	Resp#1	Resp#2	ng/ml	ng/ml

System Monitoring Compounds						
4) S 2,4-DCAA	6.378	6.810	1350.7E6	908.1E6	464.893	526.752

Target Compounds

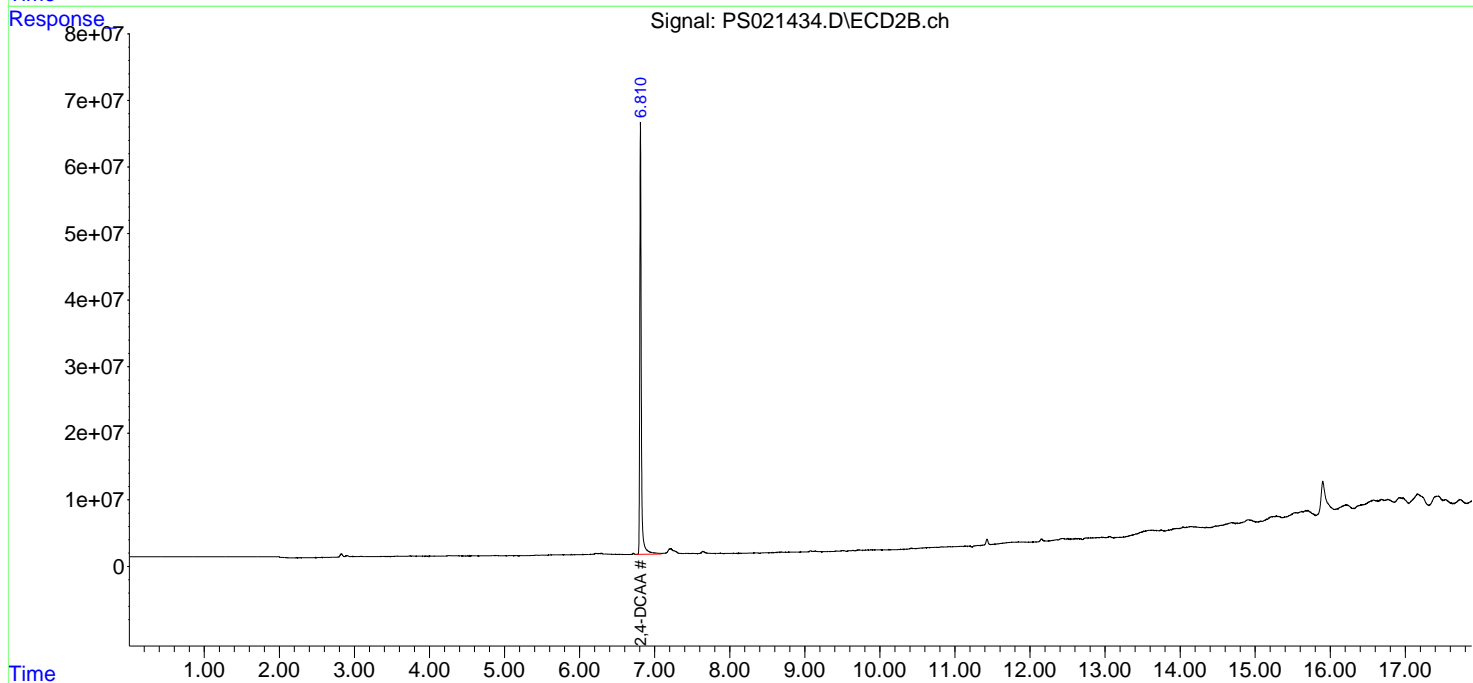
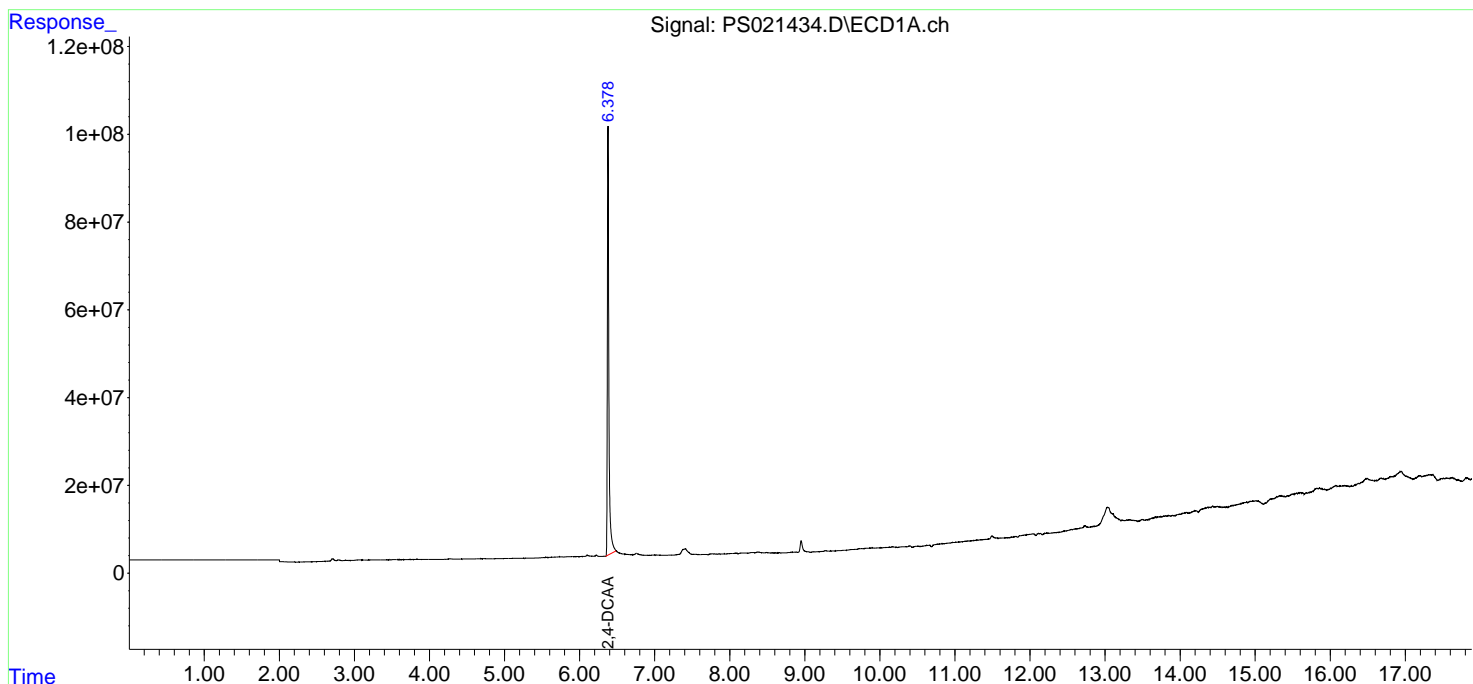
(f)=RT Delta > 1/2 Window (#)=Amounts differ by > 25% (m)=manual int.

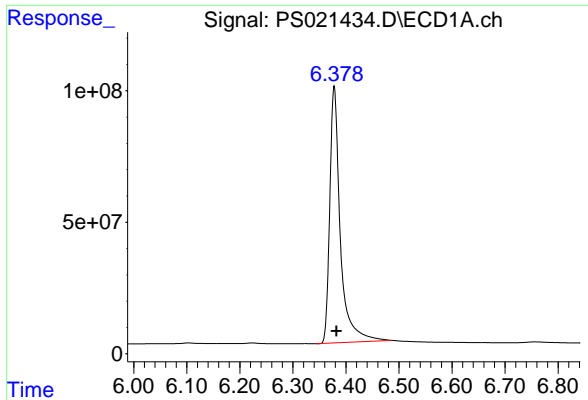
Data Path : Z:\pestpcbsrv\HPCHEM1\ECD_S\Data\ps121222\
 Data File : PS021434.D
 Signal(s) : Signal #1: ECD1A.ch Signal #2: ECD2B.ch
 Acq On : 12 Dec 2022 20:36
 Operator : AR\AJ
 Sample : I.BLK
 Misc :
 ALS Vial : 2 Sample Multiplier: 1

Instrument :
 ECD_S
 ClientSampleId :
 I.BLK

Integration File signal 1: autoint1.e
 Integration File signal 2: autoint2.e
 Quant Time: Dec 13 02:30:00 2022
 Quant Method : Z:\pestpcbsrv\HPCHEM1\ECD_S\Method\PS120722.M
 Quant Title : 8080.M
 QLast Update : Wed Dec 07 15:59:29 2022
 Response via : Initial Calibration
 Integrator: ChemStation

Volume Inj. : 2 µl
 Signal #1 Phase : Rtx-CLPesticides Signal #2 Phase: Rtx-CLPesticides2
 Signal #1 Info : 30M x 0.32mm x 0.5 Signal #2 Info : 30M x 0.32mm x 0.25µm

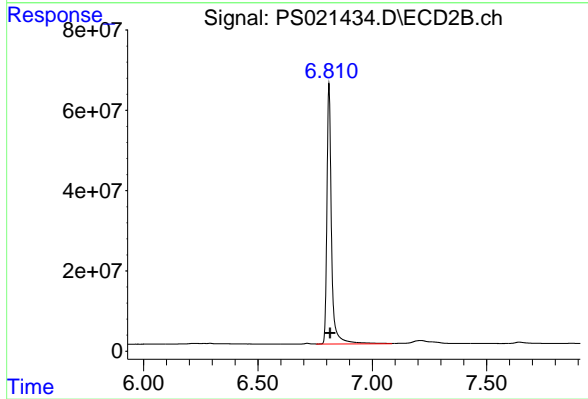




#4 2,4-DCAA

R.T.: 6.378 min
Delta R.T.: -0.004 min
Response: 1350744147
Conc: 464.89 ng/ml

Instrument :
ECD_S
ClientSampleId :
I.BLK



#4 2,4-DCAA

R.T.: 6.810 min
Delta R.T.: -0.005 min
Response: 908117516
Conc: 526.75 ng/ml