

Data Path : Z:\pestpcbsrv\HPCHEM1\ECD_S\Data\PS121223\
 Data File : PS025071.D
 Signal(s) : Signal #1: ECD1A.ch Signal #2: ECD2B.ch
 Acq On : 12 Dec 2023 14:37
 Operator : AR\AJ
 Sample : 05726-01MSD
 Misc :
 ALS Vial : 9 Sample Multiplier: 1

Instrument :
 ECD_S
 ClientSampleId :
 WC-1MSD

Integration File signal 1: autoint1.e
 Integration File signal 2: autoint2.e
 Quant Time: Dec 12 22:34:27 2023
 Quant Method : Z:\pestpcbsrv\HPCHEM1\ECD_S\Method\PS112823.M
 Quant Title : 8080.M
 QLast Update : Tue Nov 28 16:40:06 2023
 Response via : Initial Calibration
 Integrator: ChemStation

Volume Inj. : 2 µl
 Signal #1 Phase : Rtx-CLPesticides Signal #2 Phase: Rtx-CLPesticides2
 Signal #1 Info : 30M x 0.32mm x0.5 Signal #2 Info : 30M x 0.32mm x 0.25µm

| Compound | RT#1 | RT#2 | Resp#1 | Resp#2 | ng/ml | ng/ml |
|-----------------------------|--------|--------|----------|------------|---------|-----------|
| ----- | | | | | | |
| System Monitoring Compounds | | | | | | |
| 4) S 2,4-DCAA | 6.354 | 6.769 | 476.7E6 | 156.8E6 | 213.005 | 216.425 |
| Target Compounds | | | | | | |
| 2) T 3,5-DICHL... | 5.730 | 5.960 | 577.4E6 | 177.1E6 | 170.843 | 155.760 |
| 3) T 4-Nitroph... | 6.191 | 6.385 | 121.7E6 | 43089514 | 82.661 | 88.473 |
| 5) T DICAMBA | 6.495 | 6.930 | 2220.6E6 | 643.5E6 | 227.857 | 207.689 |
| 6) T MCPP | 6.644 | 7.023 | 83225962 | 21772804 | 12.151 | 10.497 |
| 7) T MCPA | 6.766 | 7.229 | 119.0E6 | 58926463 | 12.498 | 17.915 # |
| 8) T DICHLORPROP | 7.082 | 7.545 | 304.0E6 | 134.3E6 | 118.499 | 170.678 # |
| 9) T 2,4-D | 7.279 | 7.826 | 706.2E6 | 234.2E6 | 232.511 | 240.467 |
| 10) T Pentachlo... | 7.508 | 8.248 | 2043.4E6 | 589.6E6 | 58.278 | 52.011 |
| 11) T 2,4,5-TP ... | 8.030 | 8.609 | 1382.9E6 | -162298183 | 91.033 | N.D. # |
| 12) T 2,4,5-T | 8.288 | 8.976 | 2192.4E6 | 536.2E6 | 151.781 | 124.288 |
| 13) T 2,4-DB | 8.802 | 9.482 | 600.5E6 | 143.5E6 | 258.467 | 259.325 |
| 14) T DINOSEB | 9.783f | 9.795 | 3106.2E6 | 238.6E6 | 286.078 | 77.831 # |
| 15) T Picloram | 9.667 | 10.755 | 5802.5E6 | 2169.0E6 | 297.778 | 331.386 |
| 16) T DCPA | 10.106 | 10.727 | 7343.8E6 | 2028.5E6 | 391.400 | 374.262 |

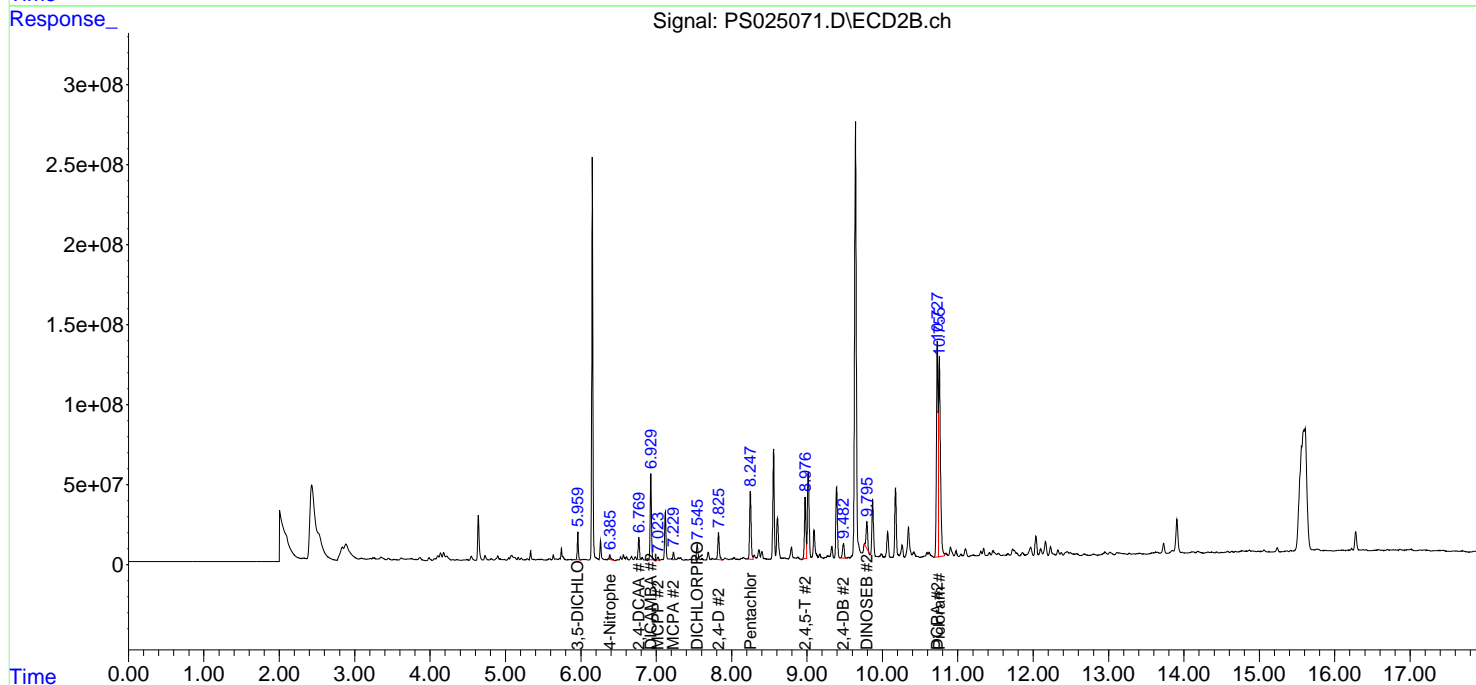
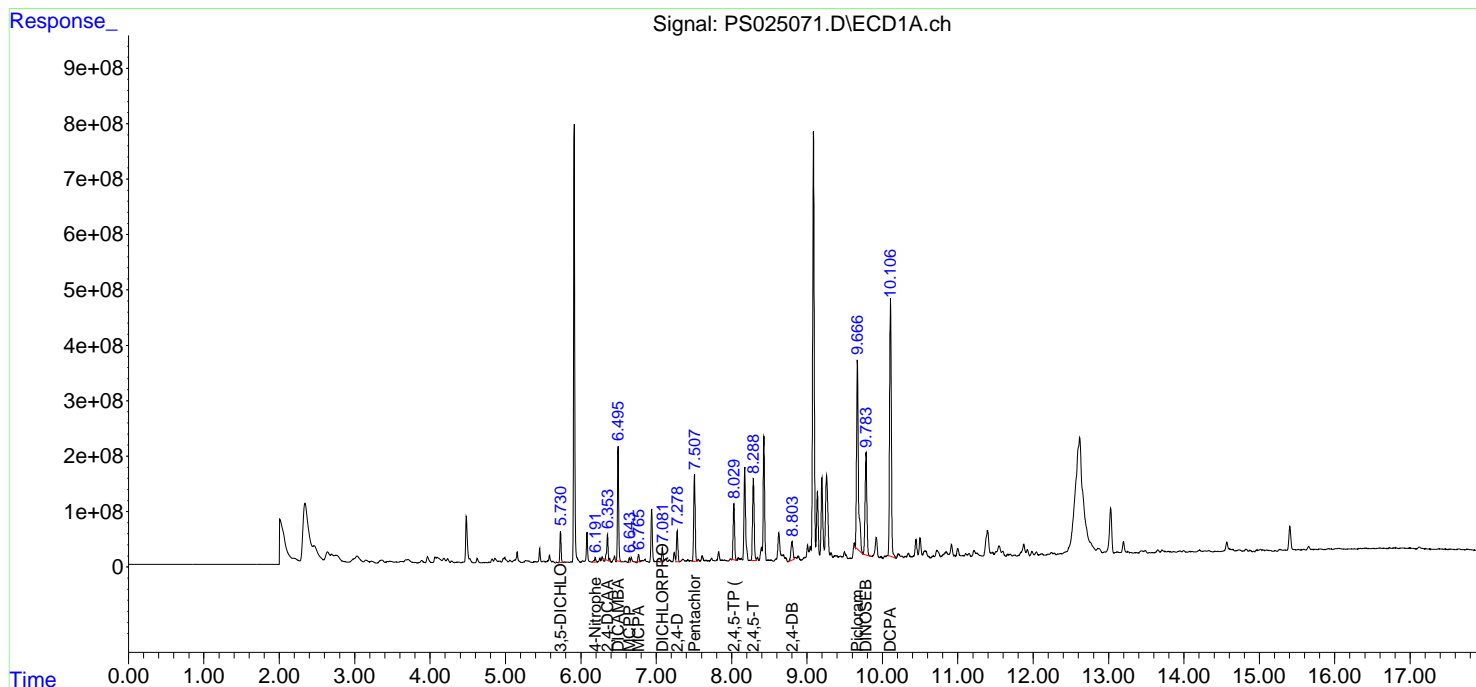
(f)=RT Delta > 1/2 Window (#)=Amounts differ by > 25% (m)=manual int.

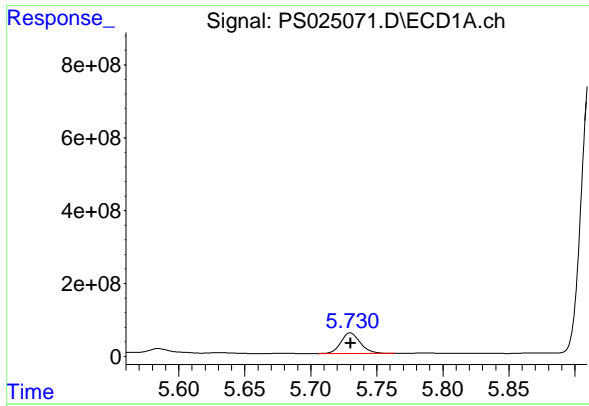
Data Path : Z:\pestpcbsrv\HPCHEM1\ECD_S\Data\PS121223\
 Data File : PS025071.D
 Signal(s) : Signal #1: ECD1A.ch Signal #2: ECD2B.ch
 Acq On : 12 Dec 2023 14:37
 Operator : AR\AJ
 Sample : 05726-01MSD
 Misc :
 ALS Vial : 9 Sample Multiplier: 1

Instrument :
 ECD_S
 ClientSampleId :
 WC-1MSD

Integration File signal 1: autoint1.e
 Integration File signal 2: autoint2.e
 Quant Time: Dec 12 22:34:27 2023
 Quant Method : Z:\pestpcbsrv\HPCHEM1\ECD_S\Method\PS112823.M
 Quant Title : 8080.M
 QLast Update : Tue Nov 28 16:40:06 2023
 Response via : Initial Calibration
 Integrator: ChemStation

Volume Inj. : 2 µl
 Signal #1 Phase : Rtx-CLPesticides Signal #2 Phase: Rtx-CLPesticides2
 Signal #1 Info : 30M x 0.32mm x 0.5 Signal #2 Info : 30M x 0.32mm x 0.25µm

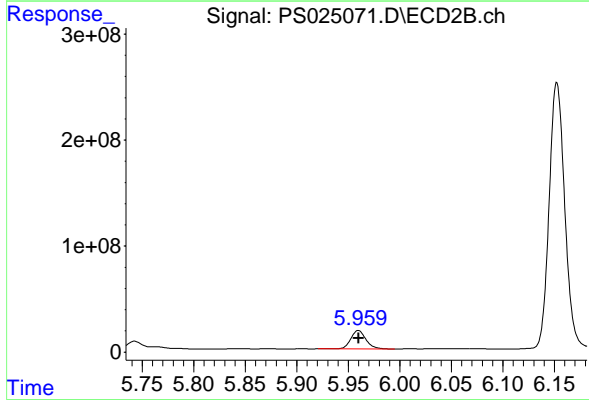




#2 3,5-DICHLOROBENZOIC ACID

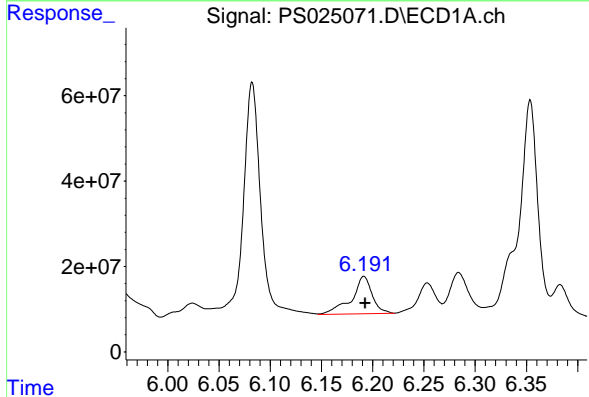
R.T.: 5.730 min
 Delta R.T.: 0.000 min
 Response: 577444913
 Conc: 170.84 ng/ml

Instrument :
 ECD_S
 ClientSampleId :
 WC-1MSD



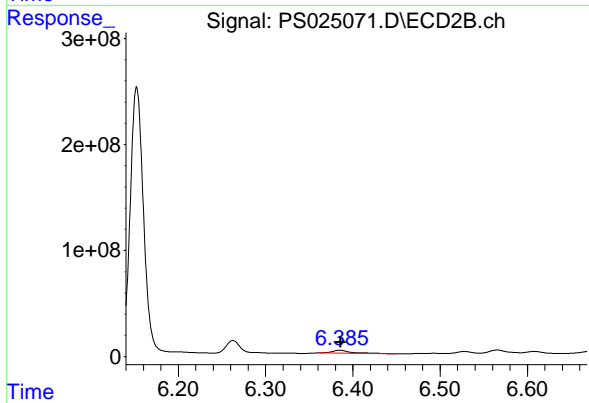
#2 3,5-DICHLOROBENZOIC ACID

R.T.: 5.960 min
 Delta R.T.: 0.000 min
 Response: 177062452
 Conc: 155.76 ng/ml



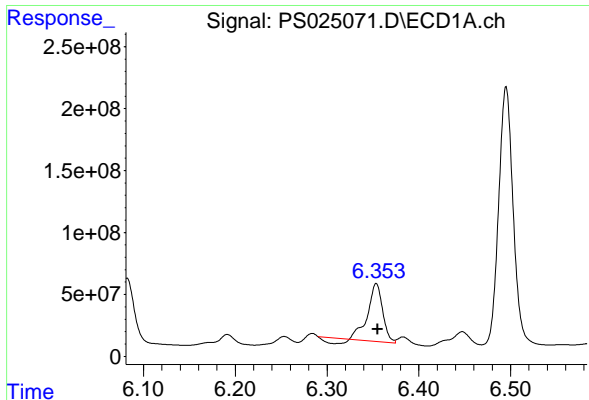
#3 4-Nitrophenol

R.T.: 6.191 min
 Delta R.T.: -0.002 min
 Response: 121728510
 Conc: 82.66 ng/ml



#3 4-Nitrophenol

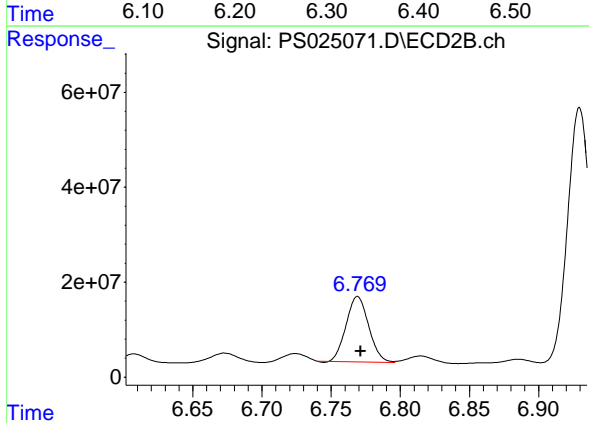
R.T.: 6.385 min
 Delta R.T.: -0.001 min
 Response: 43089514
 Conc: 88.47 ng/ml



#4 2,4-DCAA

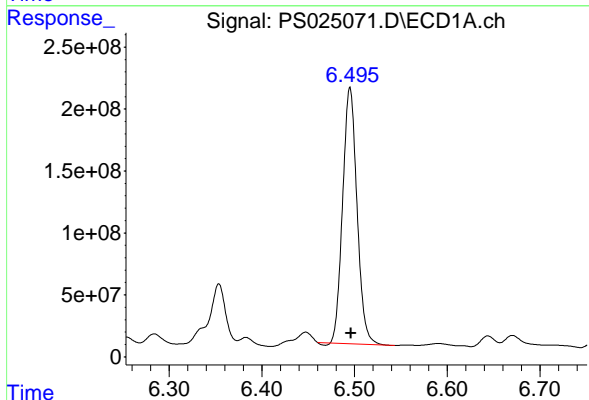
R.T.: 6.354 min
 Delta R.T.: -0.002 min
 Response: 476671044
 Conc: 213.00 ng/ml

Instrument :
 ECD_S
 ClientSampleId :
 WC-1MSD



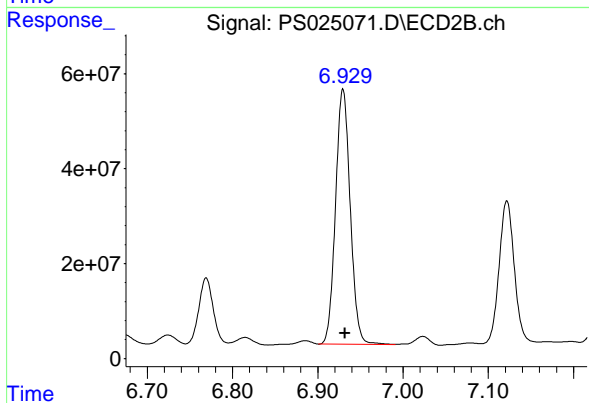
#4 2,4-DCAA

R.T.: 6.769 min
 Delta R.T.: -0.002 min
 Response: 156811795
 Conc: 216.43 ng/ml



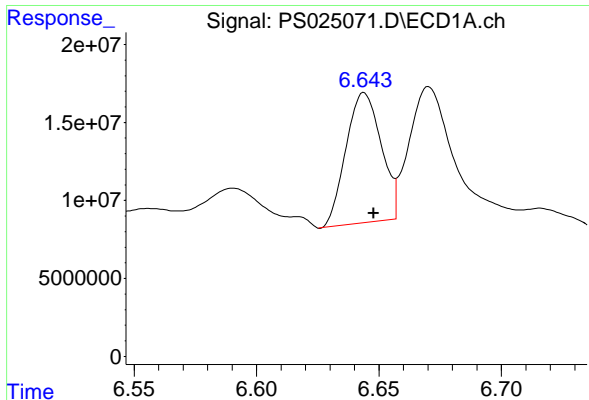
#5 DICAMBA

R.T.: 6.495 min
 Delta R.T.: -0.001 min
 Response: 2220606026
 Conc: 227.86 ng/ml



#5 DICAMBA

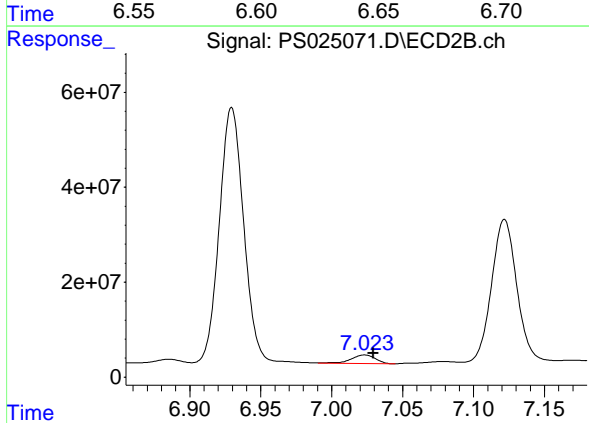
R.T.: 6.930 min
 Delta R.T.: -0.002 min
 Response: 643480521
 Conc: 207.69 ng/ml



#6 MCPP

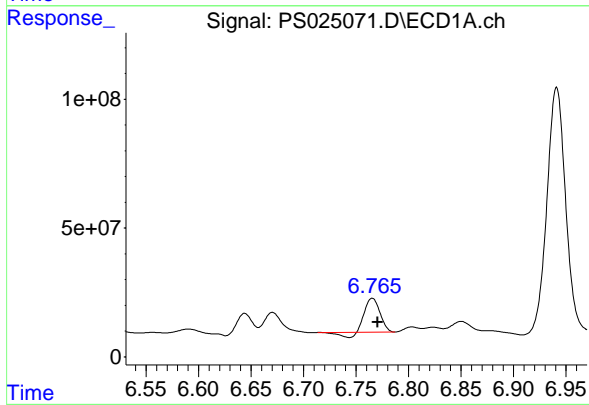
R.T.: 6.644 min
 Delta R.T.: -0.004 min
 Response: 83225962
 Conc: 12.15 ug/ml

Instrument :
 ECD_S
 ClientSampleId :
 WC-1MSD



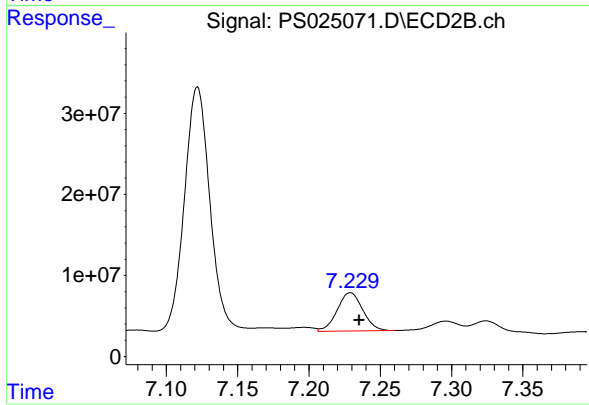
#6 MCPP

R.T.: 7.023 min
 Delta R.T.: -0.006 min
 Response: 21772804
 Conc: 10.50 ug/ml



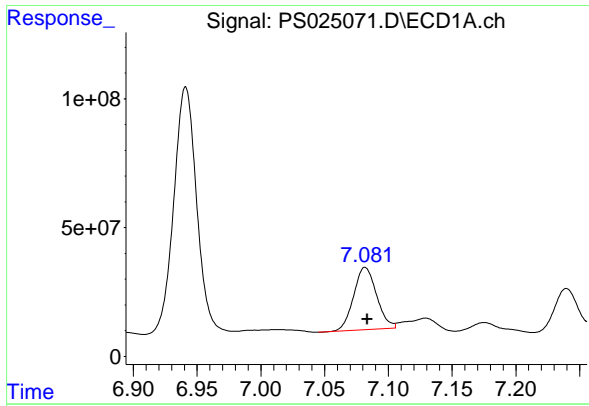
#7 MCPA

R.T.: 6.766 min
 Delta R.T.: -0.005 min
 Response: 118984068
 Conc: 12.50 ug/ml



#7 MCPA

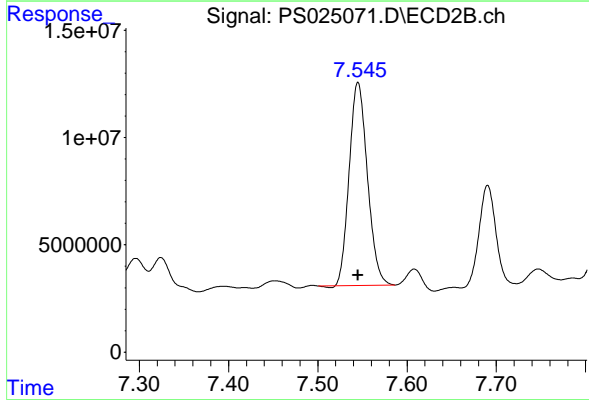
R.T.: 7.229 min
 Delta R.T.: -0.006 min
 Response: 58926463
 Conc: 17.91 ug/ml



#8 DICHLORPROP

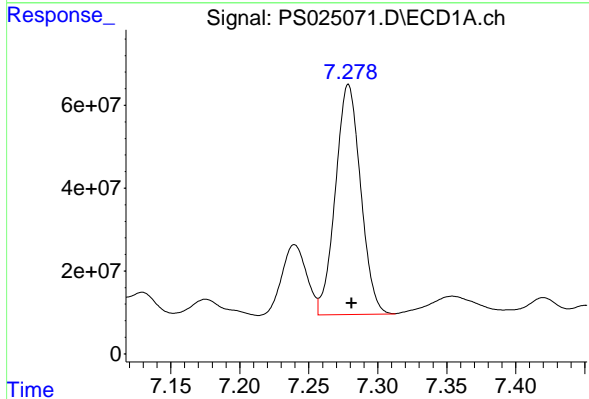
R.T.: 7.082 min
 Delta R.T.: -0.002 min
 Response: 303985301
 Conc: 118.50 ng/ml

Instrument :
 ECD_S
 ClientSampleId :
 WC-1MSD



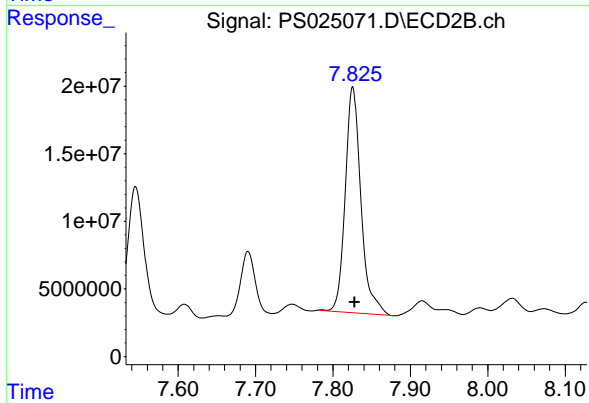
#8 DICHLORPROP

R.T.: 7.545 min
 Delta R.T.: 0.000 min
 Response: 134265061
 Conc: 170.68 ng/ml



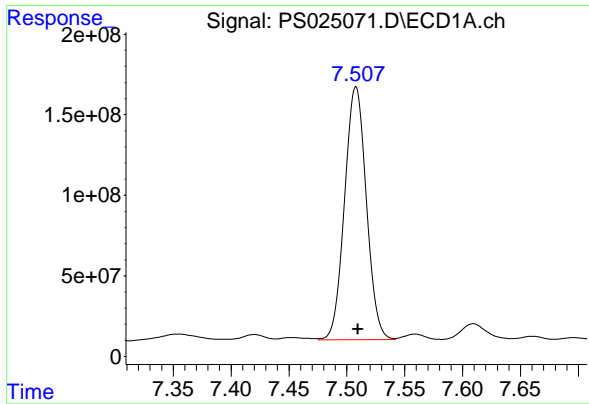
#9 2,4-D

R.T.: 7.279 min
 Delta R.T.: -0.002 min
 Response: 706214540
 Conc: 232.51 ng/ml



#9 2,4-D

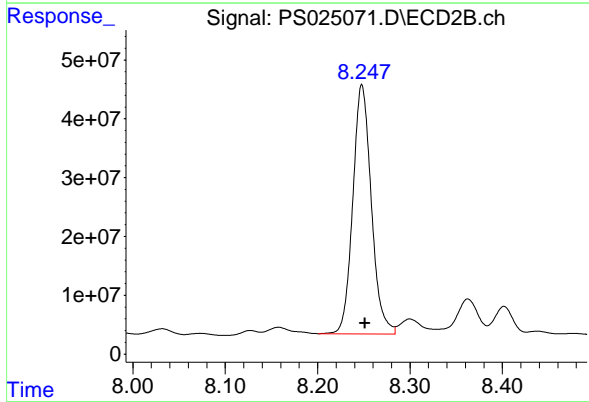
R.T.: 7.826 min
 Delta R.T.: -0.002 min
 Response: 234227302
 Conc: 240.47 ng/ml



#10 Pentachlorophenol

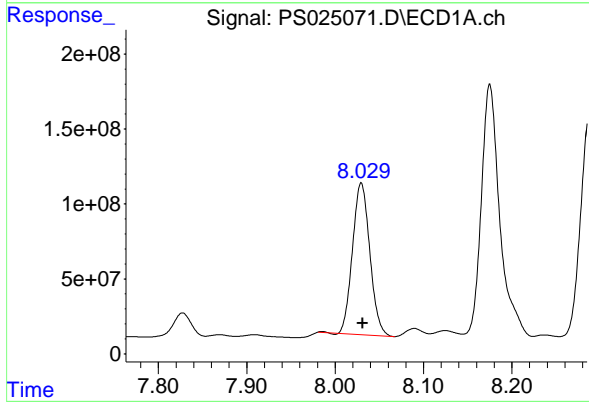
R.T.: 7.508 min
 Delta R.T.: -0.002 min
 Response: 2043444728
 Conc: 58.28 ng/ml

Instrument :
 ECD_S
 ClientSampleId :
 WC-1MSD



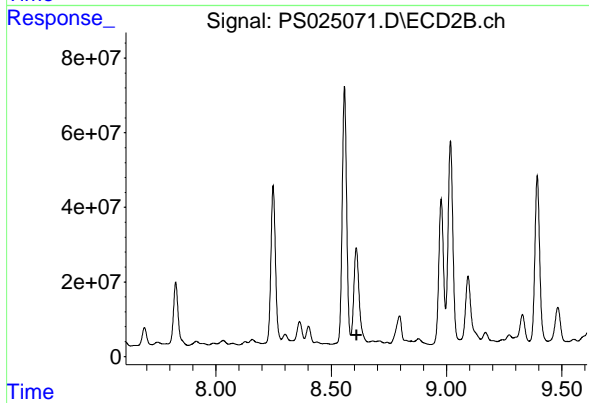
#10 Pentachlorophenol

R.T.: 8.248 min
 Delta R.T.: -0.003 min
 Response: 589575035
 Conc: 52.01 ng/ml



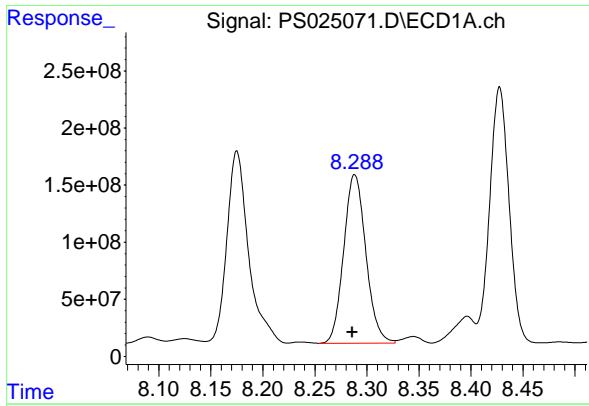
#11 2,4,5-TP (SILVEX)

R.T.: 8.030 min
 Delta R.T.: -0.002 min
 Response: 1382893042
 Conc: 91.03 ng/ml



#11 2,4,5-TP (SILVEX)

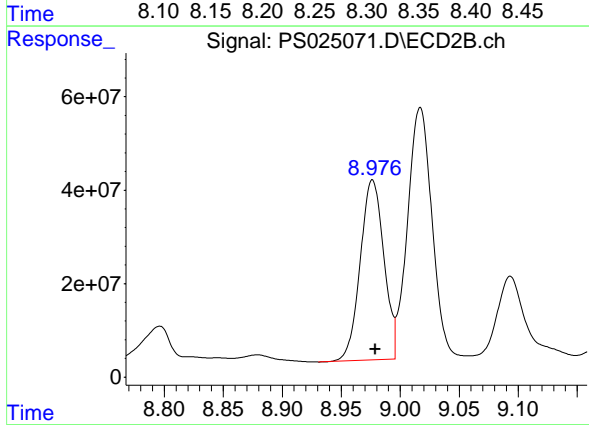
R.T.: 8.609 min
 Delta R.T.: -0.001 min
 Response: -162298183
 Conc: N.D.



#12 2,4,5-T

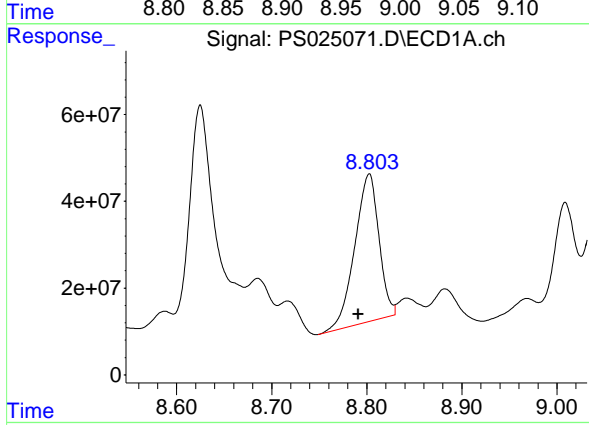
R.T.: 8.288 min
 Delta R.T.: 0.002 min
 Response: 2192385639
 Conc: 151.78 ng/ml

Instrument :
 ECD_S
 ClientSampleId :
 WC-1MSD



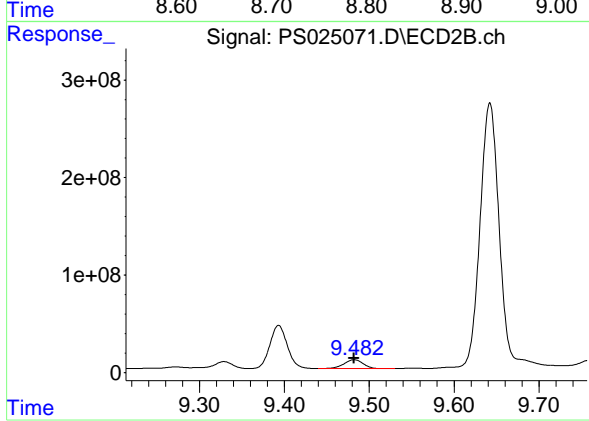
#12 2,4,5-T

R.T.: 8.976 min
 Delta R.T.: -0.002 min
 Response: 536248132
 Conc: 124.29 ng/ml



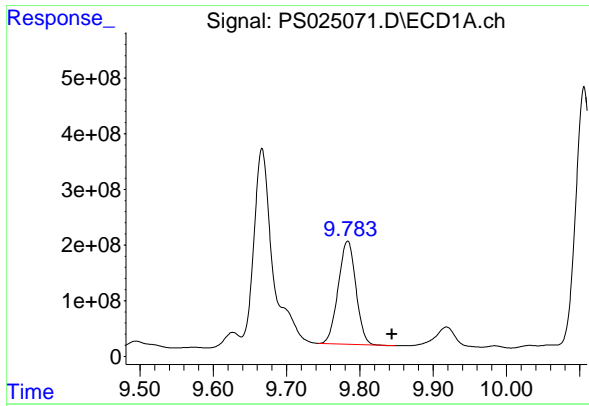
#13 2,4-DB

R.T.: 8.802 min
 Delta R.T.: 0.011 min
 Response: 600494192
 Conc: 258.47 ng/ml



#13 2,4-DB

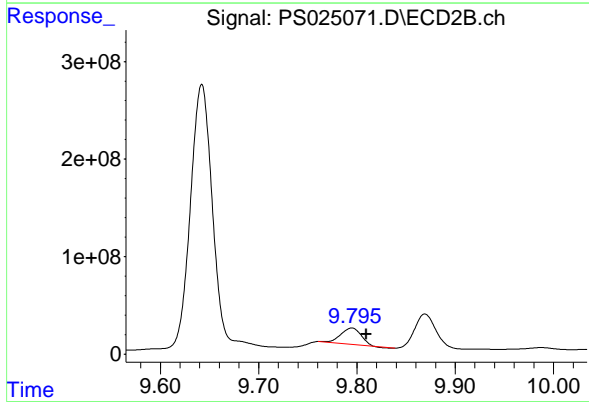
R.T.: 9.482 min
 Delta R.T.: 0.000 min
 Response: 143527890
 Conc: 259.32 ng/ml



#14 DINOSEB

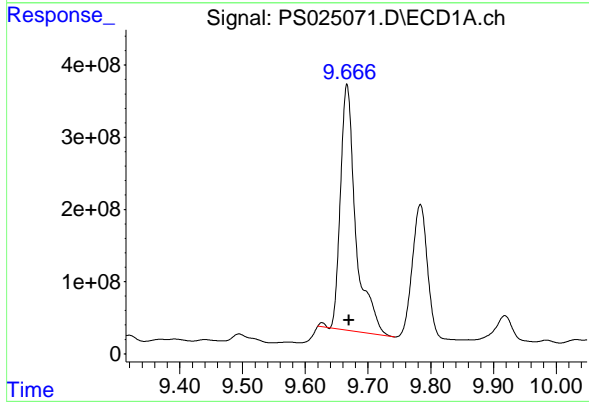
R.T.: 9.783 min
 Delta R.T.: -0.061 min
 Response: 3106181444
 Conc: 286.08 ng/ml

Instrument : ECD_S
 ClientSampleId : WC-1MSD



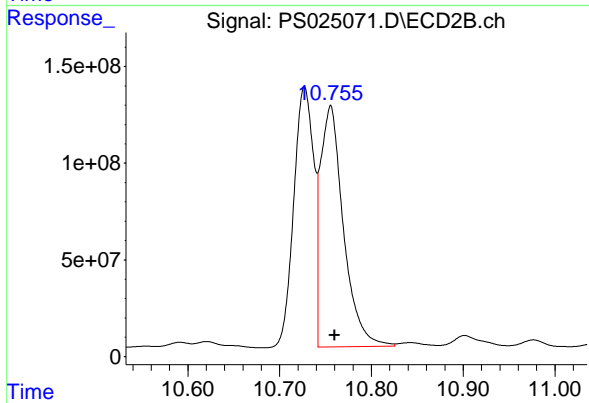
#14 DINOSEB

R.T.: 9.795 min
 Delta R.T.: -0.015 min
 Response: 238623154
 Conc: 77.83 ng/ml



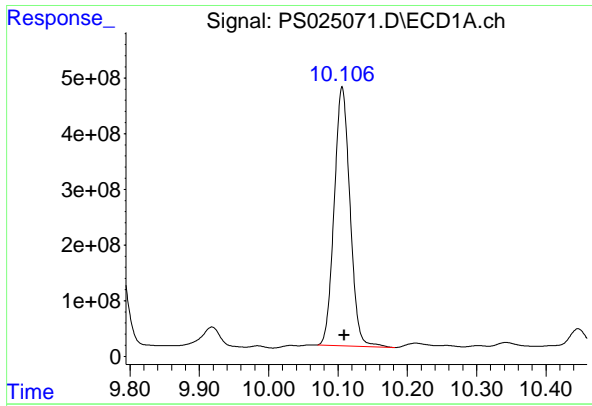
#15 Picloram

R.T.: 9.667 min
 Delta R.T.: -0.003 min
 Response: 5802450373
 Conc: 297.78 ng/ml



#15 Picloram

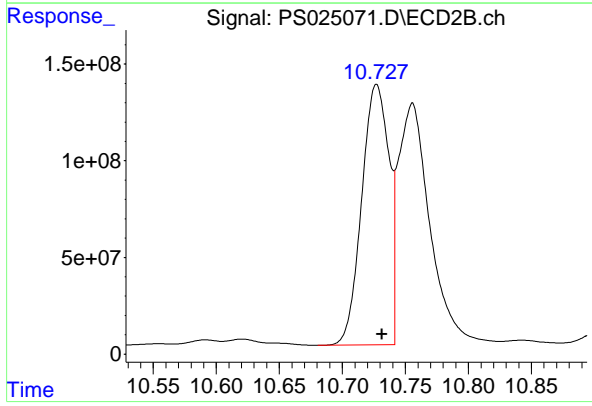
R.T.: 10.755 min
 Delta R.T.: -0.004 min
 Response: 2169011775
 Conc: 331.39 ng/ml



#16 DCPA

R.T.: 10.106 min
Delta R.T.: -0.003 min
Response: 7343833413
Conc: 391.40 ng/ml

Instrument :
ECD_S
ClientSampleId :
WC-1MSD



#16 DCPA

R.T.: 10.727 min
Delta R.T.: -0.004 min
Response: 2028474757
Conc: 374.26 ng/ml