

Data Path : Z:\pestpcbsrv\HPCHEM1\ECD_S\Data\PS121421\
 Data File : PS017683.D
 Signal(s) : Signal #1: ECD1A.ch Signal #2: ECD2B.ch
 Acq On : 14 Dec 2021 16:46
 Operator : AJ\MA
 Sample : M4967-04
 Misc :
 ALS Vial : 10 Sample Multiplier: 1

Instrument :
 ECD_S
 ClientSampleId :
 TP-7D

Integration File signal 1: autoint1.e
 Integration File signal 2: autoint2.e
 Quant Time: Dec 14 17:45:35 2021
 Quant Method : Z:\pestpcbsrv\HPCHEM1\ECD_S\Method\PS121421.M
 Quant Title : 8080.M
 QLast Update : Tue Dec 14 13:29:21 2021
 Response via : Initial Calibration
 Integrator: ChemStation

Volume Inj. : 2 µl
 Signal #1 Phase : Rtx-CLPesticides Signal #2 Phase: Rtx-CLPesticides2
 Signal #1 Info : 30M x 0.32mm x0.5 Signal #2 Info : 30M x 0.32mm x 0.25µm

	Compound	RT#1	RT#2	Resp#1	Resp#2	ng/ml	ng/ml

System Monitoring Compounds							
4) S	2,4-DCAA	7.126	6.714	841.3E6	310.6E6	538.280	521.128
Target Compounds							
2) T	3,5-DICHL...	6.385	5.942	1706994	90079703	<MDL	99.354 #
3) T	4-Nitroph...	6.921f	6.375	63511589	10905412	93.921	31.316 #
5) T	DICAMBA	7.327	6.878	42655168	24044068	6.746	9.026 #
6) T	MCPD	7.491	6.953	27577546	13472314	5.850	6.190
7) T	MCPA	7.608	7.167	136.5E6	14939404	20.632	4.886 #
8) T	DICHLORPROP	8.009	7.511	2632659	13782816	1.685	20.224 #
9) T	2,4-D	8.236	7.732f	65581746	15639380	37.096	19.236 #
10) T	Pentachlo...	8.518	8.144f	53922638	3454569	2.499	<MDL #
11) T	2,4,5-TP ...	9.121	0.000	5842785	0	<MDL	N.D. #
12) T	2,4,5-T	0.000	9.008f	0	22738979	N.D.	6.649
13) T	2,4-DB	9.908	9.497f	44348794	7923590	30.032	17.489 #
14) T	DINOSEB	11.095	9.755	11551825	10748868	1.689	4.161 #
15) T	Picloram	10.911	10.700f	11778906	17837995	1.085	3.632 #
16) T	DCPA	11.380f	10.700	-32710812	17837995	N.D.	3.983

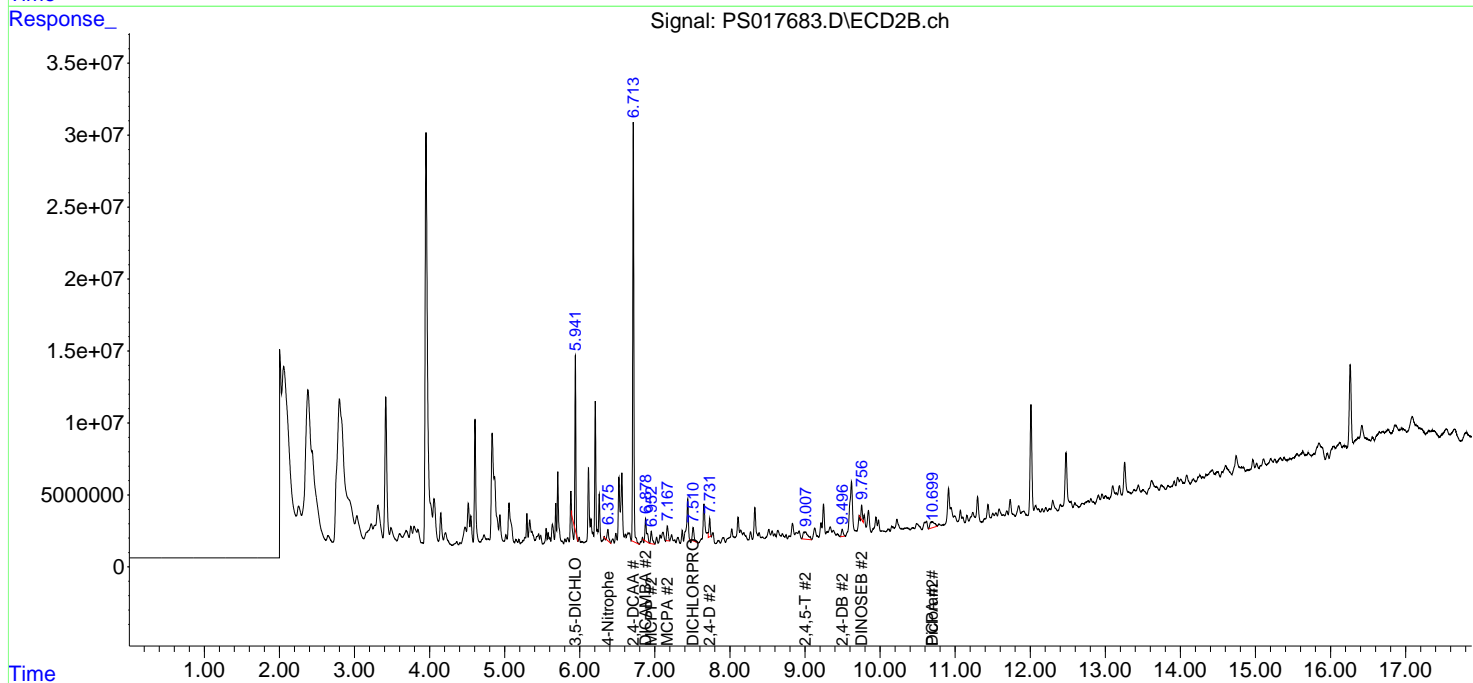
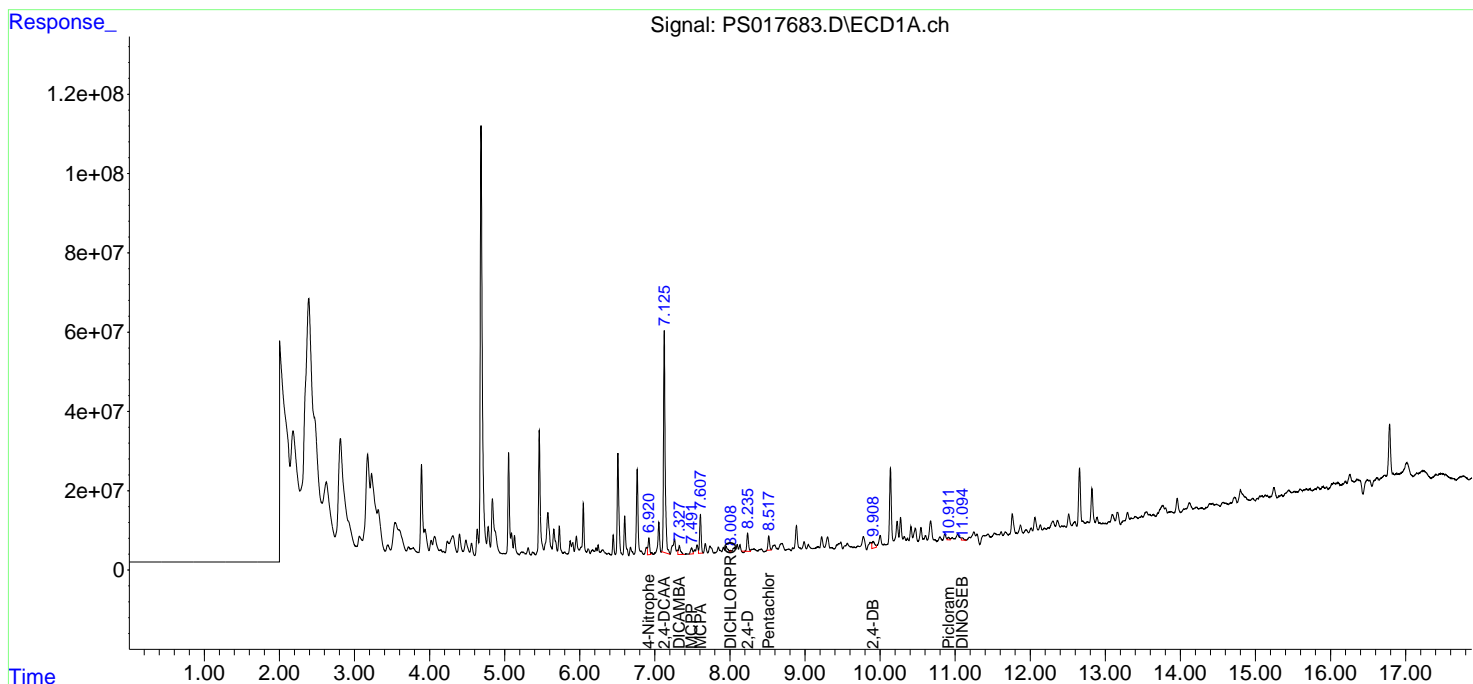
(f)=RT Delta > 1/2 Window (#)=Amounts differ by > 25% (m)=manual int.

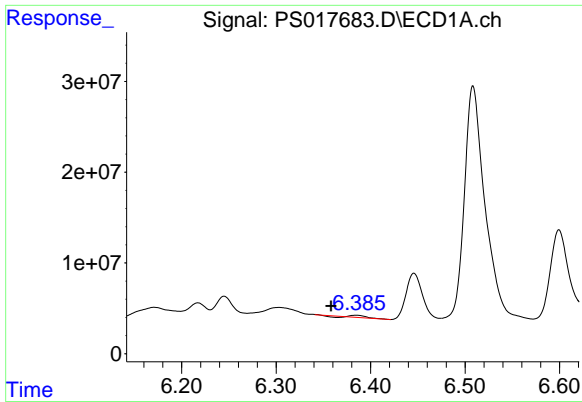
Data Path : Z:\pestpcbsrv\HPCHEM1\ECD_S\Data\PS121421\
 Data File : PS017683.D
 Signal(s) : Signal #1: ECD1A.ch Signal #2: ECD2B.ch
 Acq On : 14 Dec 2021 16:46
 Operator : AJ\MA
 Sample : M4967-04
 Misc :
 ALS Vial : 10 Sample Multiplier: 1

Instrument :
 ECD_S
 ClientSampleId :
 TP-7D

Integration File signal 1: autoint1.e
 Integration File signal 2: autoint2.e
 Quant Time: Dec 14 17:45:35 2021
 Quant Method : Z:\pestpcbsrv\HPCHEM1\ECD_S\Method\PS121421.M
 Quant Title : 8080.M
 QLast Update : Tue Dec 14 13:29:21 2021
 Response via : Initial Calibration
 Integrator: ChemStation

Volume Inj. : 2 µl
 Signal #1 Phase : Rtx-CLPesticides Signal #2 Phase: Rtx-CLPesticides2
 Signal #1 Info : 30M x 0.32mm x0.5 Signal #2 Info : 30M x 0.32mm x 0.25µm

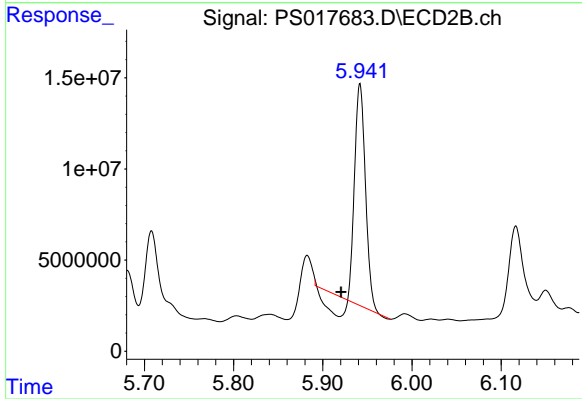




#2 3,5-DICHLORO BENZOIC ACID

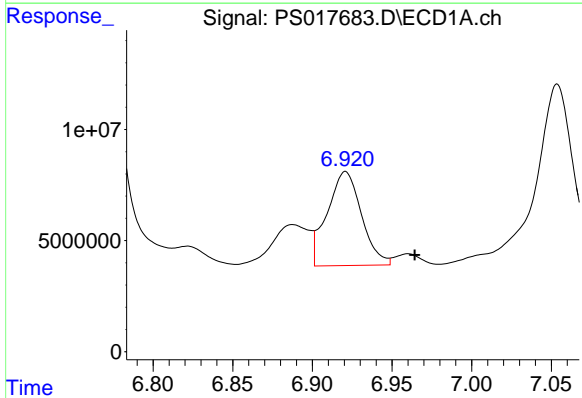
R.T.: 6.385 min
 Delta R.T.: 0.026 min
 Response: 1706994
 Conc: N.D.

Instrument :
 ECD_S
 ClientSampleId :
 TP-7D



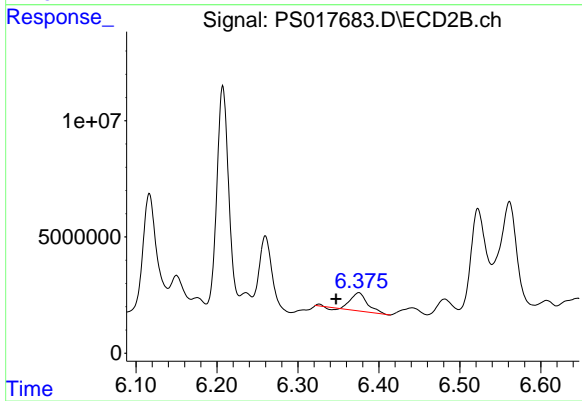
#2 3,5-DICHLORO BENZOIC ACID

R.T.: 5.942 min
 Delta R.T.: 0.021 min
 Response: 90079703
 Conc: 99.35 ng/ml



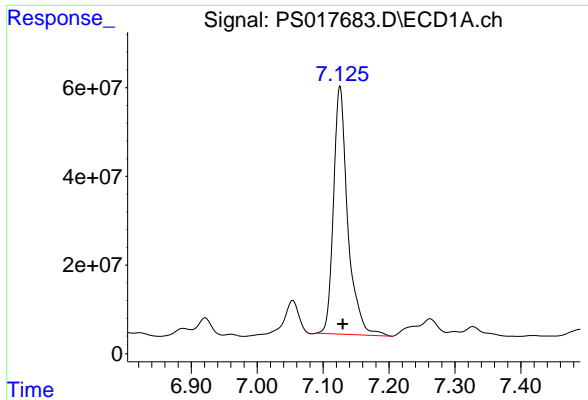
#3 4-Nitrophenol

R.T.: 6.921 min
 Delta R.T.: -0.043 min
 Response: 63511589
 Conc: 93.92 ng/ml



#3 4-Nitrophenol

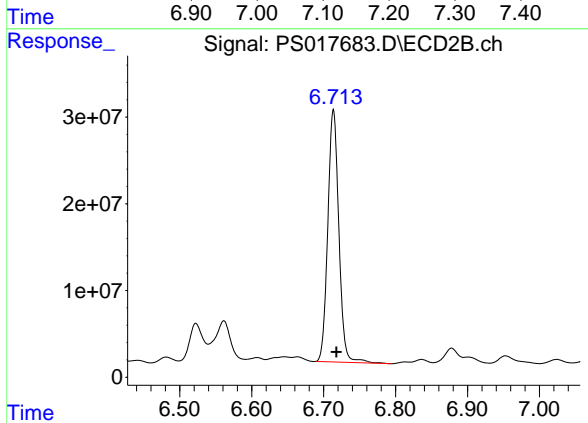
R.T.: 6.375 min
 Delta R.T.: 0.028 min
 Response: 10905412
 Conc: 31.32 ng/ml



#4 2,4-DCAA

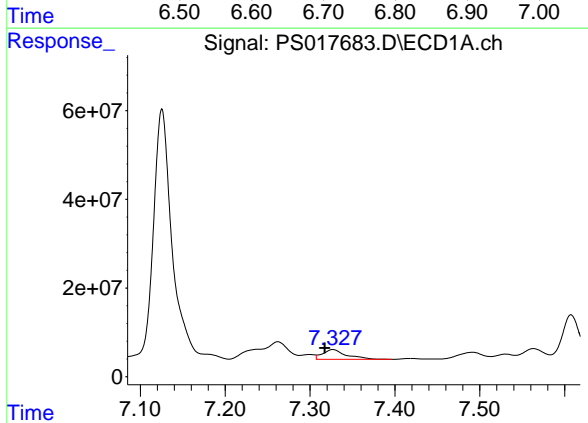
R.T.: 7.126 min
Delta R.T.: -0.004 min
Response: 841302215
Conc: 538.28 ng/ml

Instrument :
ECD_S
ClientSampleId :
TP-7D



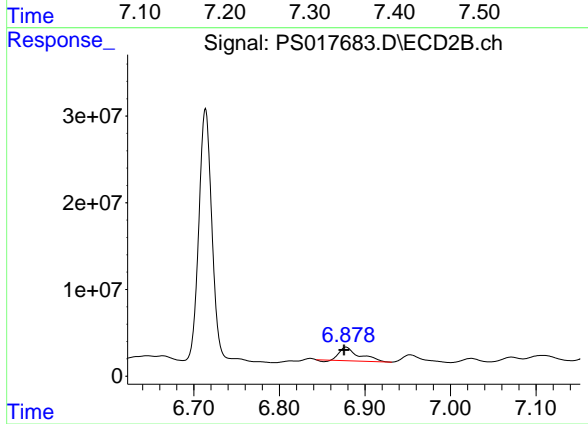
#4 2,4-DCAA

R.T.: 6.714 min
Delta R.T.: -0.004 min
Response: 310645386
Conc: 521.13 ng/ml



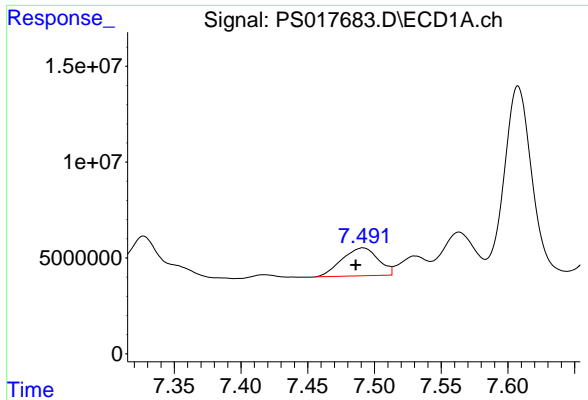
#5 DICAMBA

R.T.: 7.327 min
Delta R.T.: 0.010 min
Response: 42655168
Conc: 6.75 ng/ml



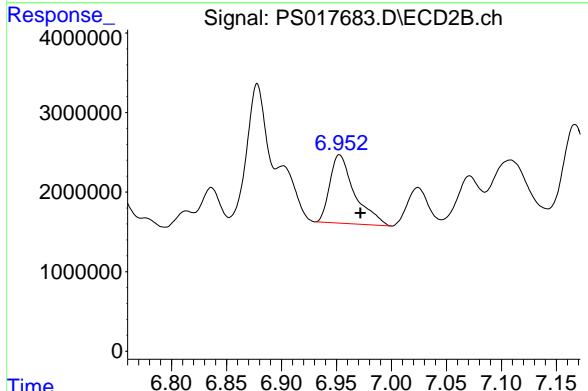
#5 DICAMBA

R.T.: 6.878 min
Delta R.T.: 0.002 min
Response: 24044068
Conc: 9.03 ng/ml

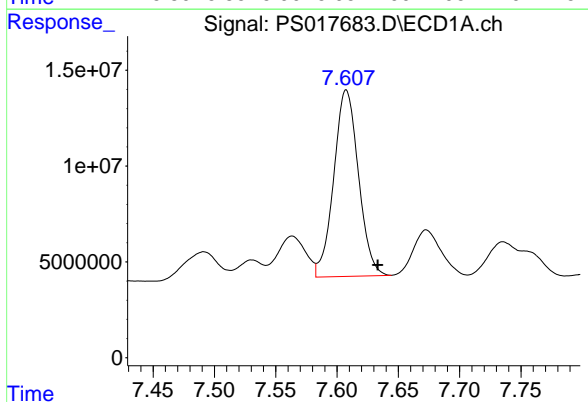


#6 MCP
 R.T.: 7.491 min
 Delta R.T.: 0.005 min
 Response: 27577546
 Conc: 5.85 ug/ml

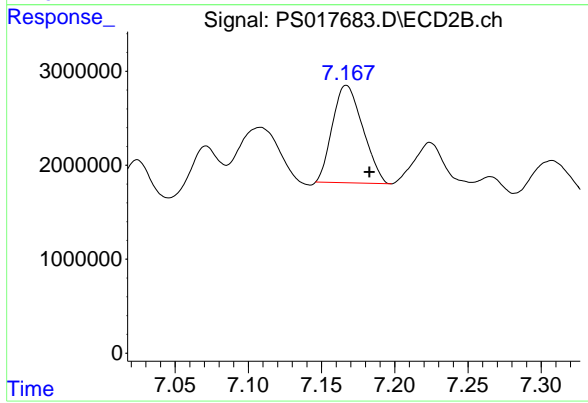
Instrument :
 ECD_S
 ClientSampleId :
 TP-7D



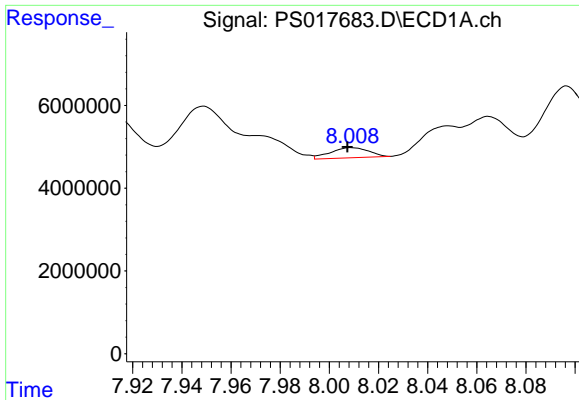
#6 MCP
 R.T.: 6.953 min
 Delta R.T.: -0.019 min
 Response: 13472314
 Conc: 6.19 ug/ml



#7 MCP
 R.T.: 7.608 min
 Delta R.T.: -0.026 min
 Response: 136453255
 Conc: 20.63 ug/ml



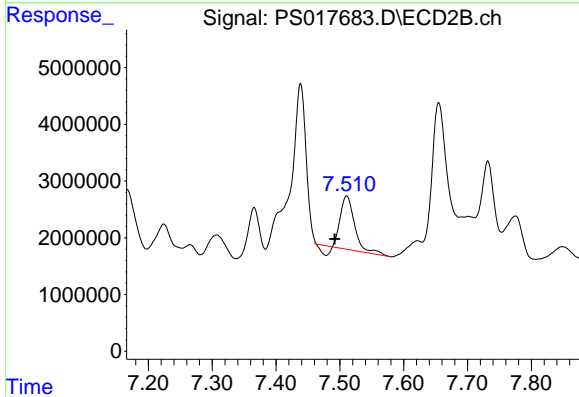
#7 MCP
 R.T.: 7.167 min
 Delta R.T.: -0.015 min
 Response: 14939404
 Conc: 4.89 ug/ml



#8 DICHLORPROP

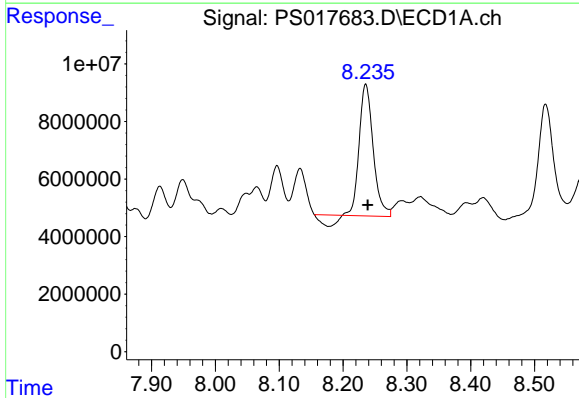
R.T.: 8.009 min
 Delta R.T.: 0.002 min
 Response: 2632659
 Conc: 1.68 ng/ml

Instrument :
 ECD_S
 ClientSampleId :
 TP-7D



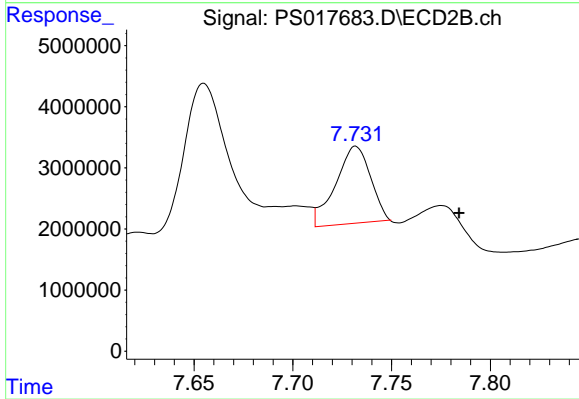
#8 DICHLORPROP

R.T.: 7.511 min
 Delta R.T.: 0.019 min
 Response: 13782816
 Conc: 20.22 ng/ml



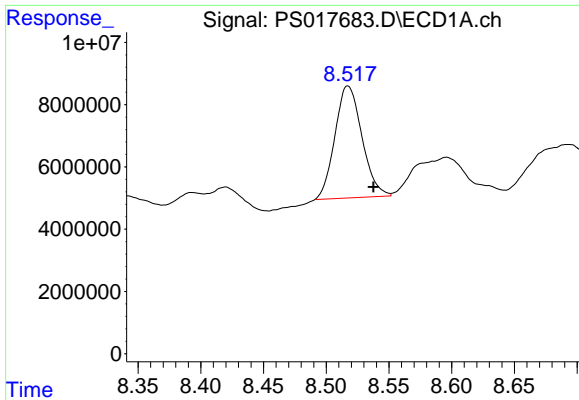
#9 2,4-D

R.T.: 8.236 min
 Delta R.T.: -0.003 min
 Response: 65581746
 Conc: 37.10 ng/ml



#9 2,4-D

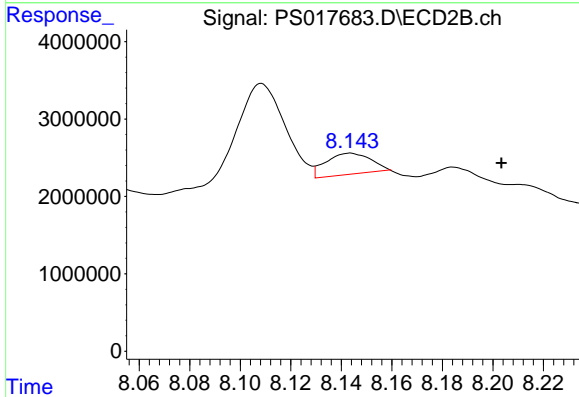
R.T.: 7.732 min
 Delta R.T.: -0.052 min
 Response: 15639380
 Conc: 19.24 ng/ml



#10 Pentachlorophenol

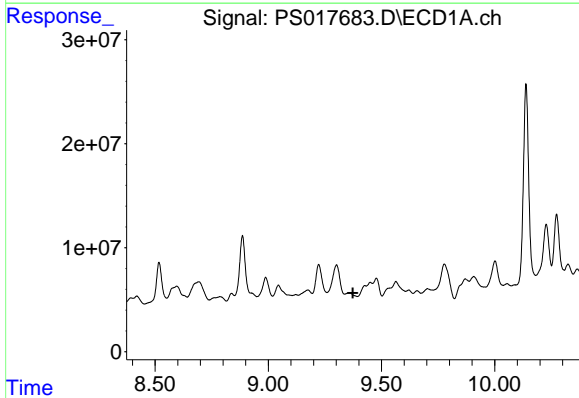
R.T.: 8.518 min
 Delta R.T.: -0.020 min
 Response: 53922638
 Conc: 2.50 ng/ml

Instrument :
 ECD_S
 ClientSampleId :
 TP-7D



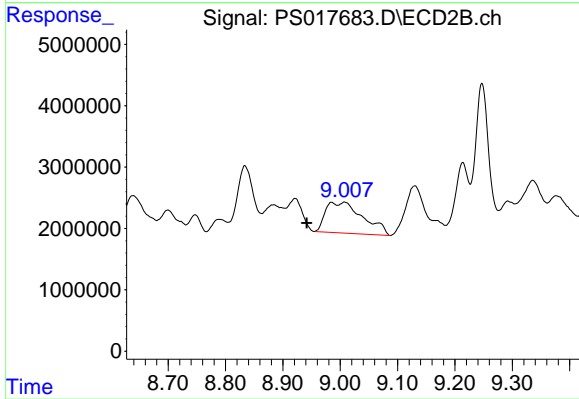
#10 Pentachlorophenol

R.T.: 8.144 min
 Delta R.T.: -0.060 min
 Response: 3454569
 Conc: N.D.



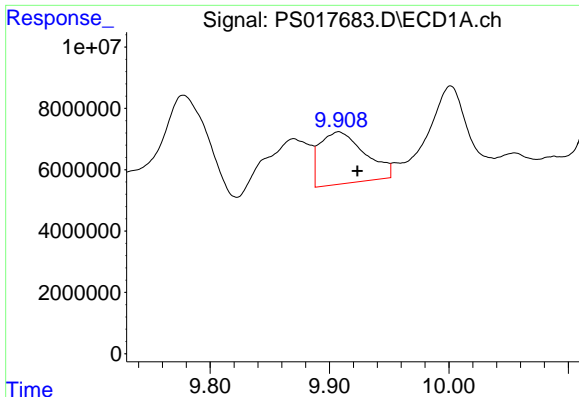
#12 2,4,5-T

R.T.: 0.000 min
 Exp R.T. : 9.373 min
 Response: 0
 Conc: N.D.



#12 2,4,5-T

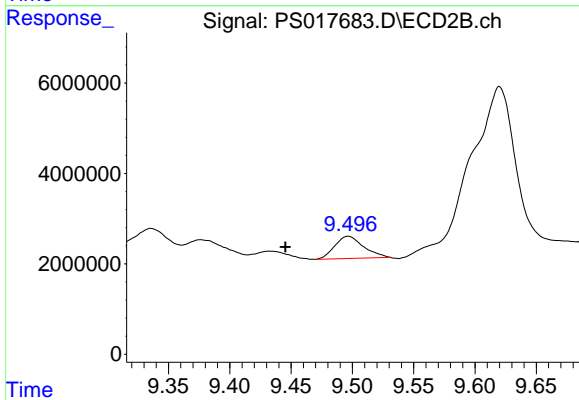
R.T.: 9.008 min
 Delta R.T.: 0.066 min
 Response: 22738979
 Conc: 6.65 ng/ml



#13 2,4-DB

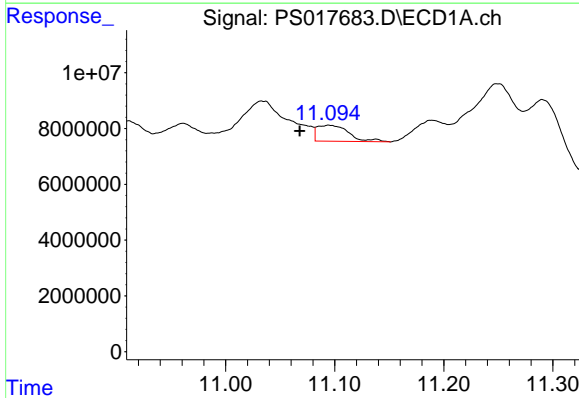
R.T.: 9.908 min
 Delta R.T.: -0.016 min
 Response: 44348794
 Conc: 30.03 ng/ml

Instrument :
 ECD_S
 ClientSampleId :
 TP-7D



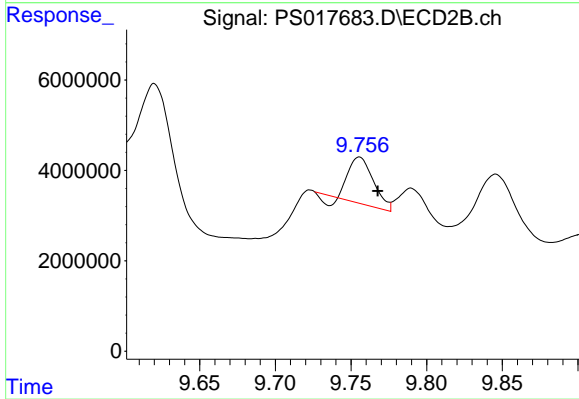
#13 2,4-DB

R.T.: 9.497 min
 Delta R.T.: 0.051 min
 Response: 7923590
 Conc: 17.49 ng/ml



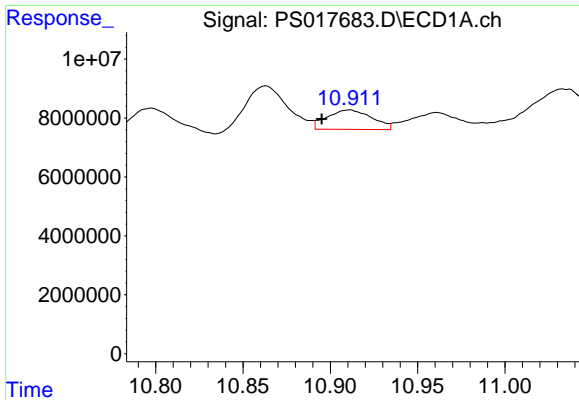
#14 DINOSEB

R.T.: 11.095 min
 Delta R.T.: 0.027 min
 Response: 11551825
 Conc: 1.69 ng/ml



#14 DINOSEB

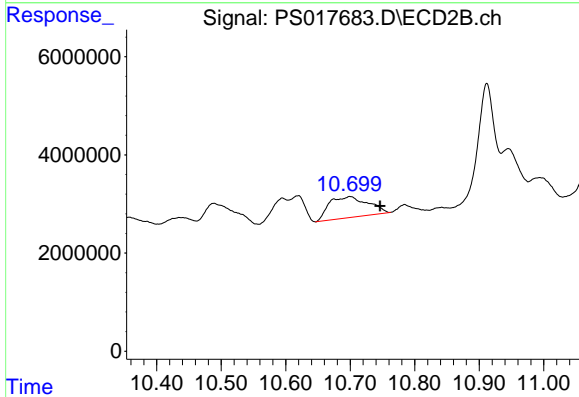
R.T.: 9.755 min
 Delta R.T.: -0.012 min
 Response: 10748868
 Conc: 4.16 ng/ml



#15 Picloram

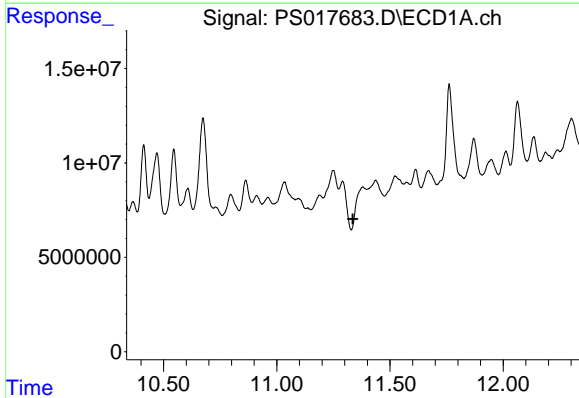
R.T.: 10.911 min
 Delta R.T.: 0.016 min
 Response: 11778906
 Conc: 1.09 ng/ml

Instrument :
 ECD_S
 ClientSampleId :
 TP-7D



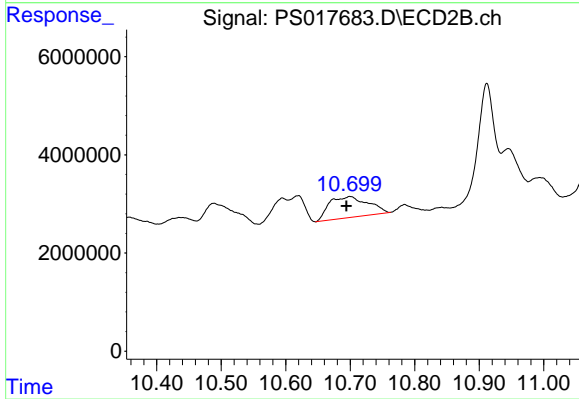
#15 Picloram

R.T.: 10.700 min
 Delta R.T.: -0.047 min
 Response: 17837995
 Conc: 3.63 ng/ml



#16 DCPA

R.T.: 11.380 min
 Delta R.T.: 0.044 min
 Response: -32710812
 Conc: N.D.



#16 DCPA

R.T.: 10.700 min
 Delta R.T.: 0.006 min
 Response: 17837995
 Conc: 3.98 ng/ml