

Data Path : Z:\pestpcbsrv\HPCHEM1\ECD_S\Data\PS121718\
 Data File : PS002631.D
 Signal(s) : Signal #1: ECD1A.ch Signal #2: ECD2B.ch
 Acq On : 17 Dec 2018 19:39
 Operator : EI\SJ
 Sample : J6347-15MS
 Misc :
 ALS Vial : 8 Sample Multiplier: 1

Instrument :
 ECD_S
 ClientSampleId :

Integration File signal 1: autoint1.e
 Integration File signal 2: autoint2.e
 Quant Time: Dec 18 02:19:30 2018
 Quant Method : Z:\pestpcbsrv\HPCHEM1\ECD_S\Method\PS120618.M
 Quant Title : 8080.M
 QLast Update : Mon Dec 10 06:14:54 2018
 Response via : Initial Calibration
 Integrator: ChemStation

Volume Inj. : 2 µl
 Signal #1 Phase : Rtx-CLPesticides Signal #2 Phase: Rtx-CLPesticides2
 Signal #1 Info : 30M x 0.32mm x0.5 Signal #2 Info : 30M x 0.32mm x 0.25µm

	Compound	RT#1	RT#2	Resp#1	Resp#2	ng/ml	ng/ml

System Monitoring Compounds							
4) S	2,4-DCAA	11.396	10.893	173.1E6	185.4E6	545.472	479.375
Target Compounds							
1) T	Dalapon	2.925	2.372	181.3E6	199.3E6	393.919	437.911
2) T	3,5-DICHL...	9.825	9.048	219.7E6	229.2E6	459.745	477.049
3) T	4-Nitroph...	10.993	10.043	73253718	74405590	462.347	416.284
5) T	DICAMBA	11.704	11.175	650.1E6	748.1E6	459.778	524.761
6) T	MCPD	0.000	11.449	0	3857252	N.D.	4.126 #
7) T	MCPA	12.293	11.779	51144230	74918594	33.952	52.119 #
8) T	DICHLORPROP	12.890	12.299	168.9E6	158.1E6	474.905	441.948
9) T	2,4-D	13.251	12.771	180.8E6	205.3E6	514.708	484.682
10) T	Pentachlo...	13.626	13.314	2544.1E6	2776.3E6	507.354	527.714
11) T	2,4,5-TP ...	14.495	13.934	921.1E6	1081.2E6	474.602	514.955
12) T	2,4,5-T	14.894	14.508	886.6E6	670.7E6	471.960	392.019
13) T	2,4-DB	15.643	15.154	89226039	89101164	394.519	367.804
14) T	DINOSEB	17.114	15.577	743.3E6	715.8E6	510.813	469.063
15) T	Picloram	16.912	16.753	811.8E6	907.2E6	319.888	329.742
16) T	DCPA	17.457	16.831	708.8E6	953.3E6	291.675	328.132

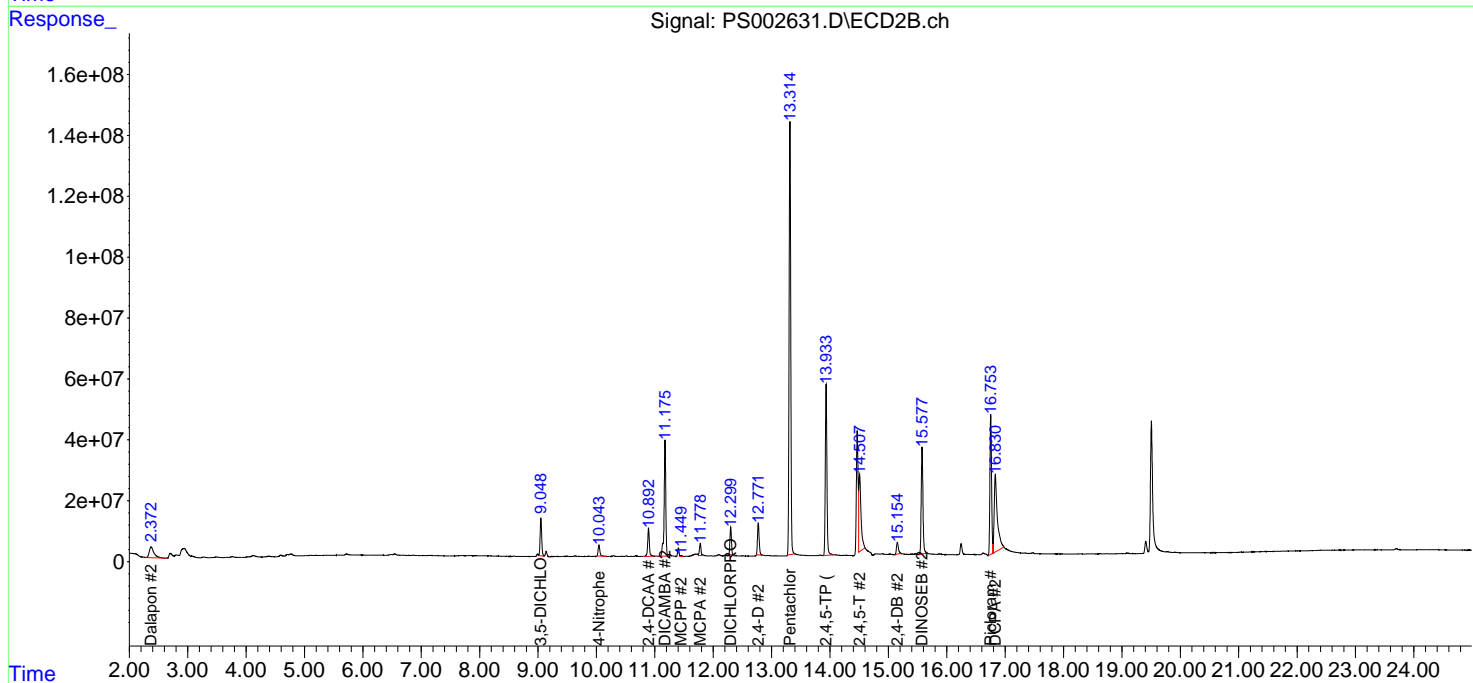
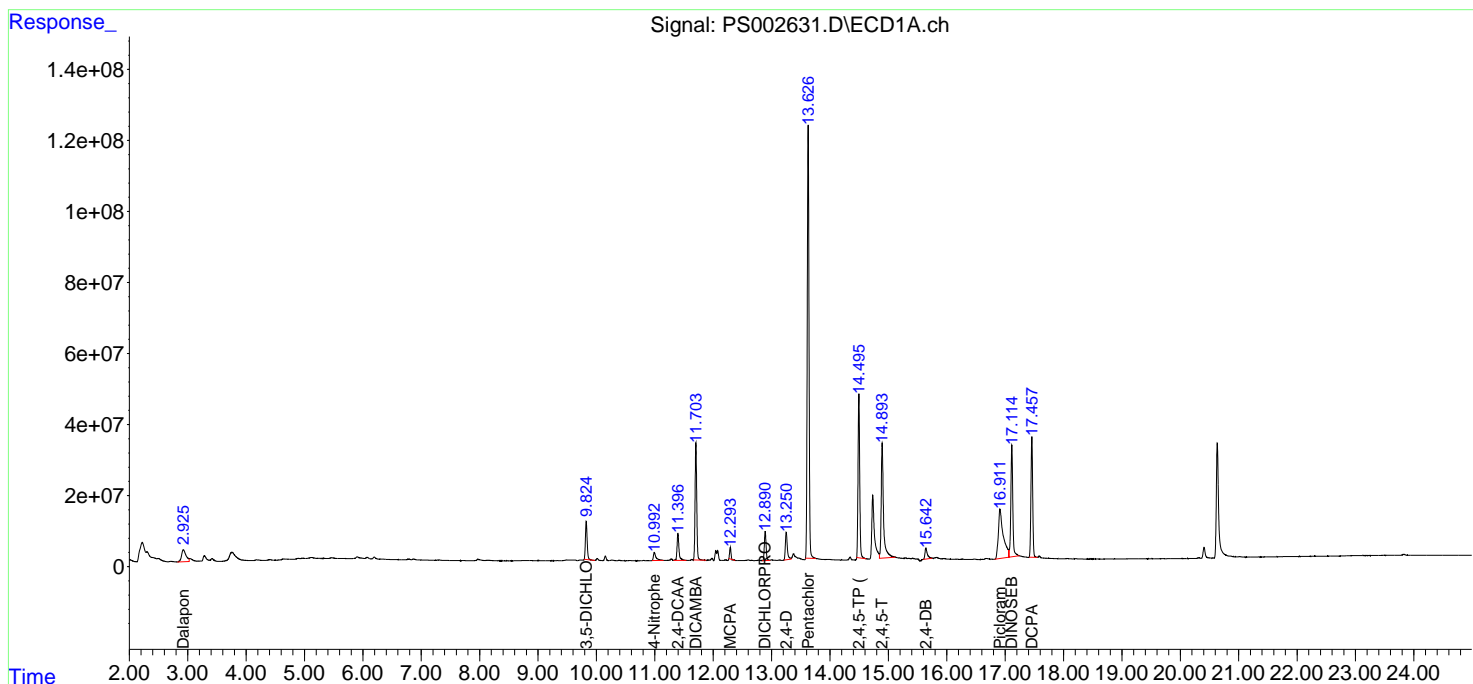
(f)=RT Delta > 1/2 Window (#)=Amounts differ by > 25% (m)=manual int.

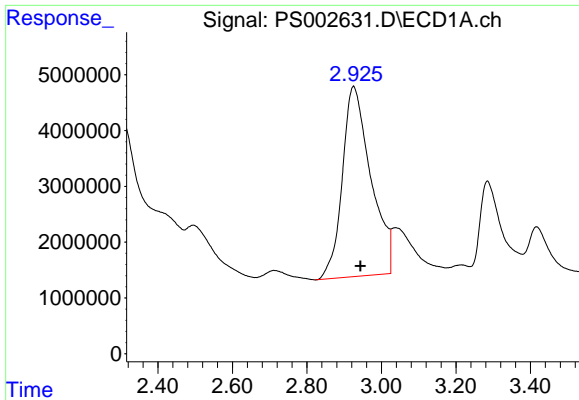
Data Path : Z:\pestpcbsrv\HPCHEM1\ECD_S\Data\PS121718\
 Data File : PS002631.D
 Signal(s) : Signal #1: ECD1A.ch Signal #2: ECD2B.ch
 Acq On : 17 Dec 2018 19:39
 Operator : EI\SJ
 Sample : J6347-15MS
 Misc :
 ALS Vial : 8 Sample Multiplier: 1

Instrument :
 ECD_S
 ClientSampled :

Integration File signal 1: autoint1.e
 Integration File signal 2: autoint2.e
 Quant Time: Dec 18 02:19:30 2018
 Quant Method : Z:\pestpcbsrv\HPCHEM1\ECD_S\Method\PS120618.M
 Quant Title : 8080.M
 QLast Update : Mon Dec 10 06:14:54 2018
 Response via : Initial Calibration
 Integrator: ChemStation

Volume Inj. : 2 µl
 Signal #1 Phase : Rtx-CLPesticides Signal #2 Phase: Rtx-CLPesticides2
 Signal #1 Info : 30M x 0.32mm x0.5 Signal #2 Info : 30M x 0.32mm x 0.25µm

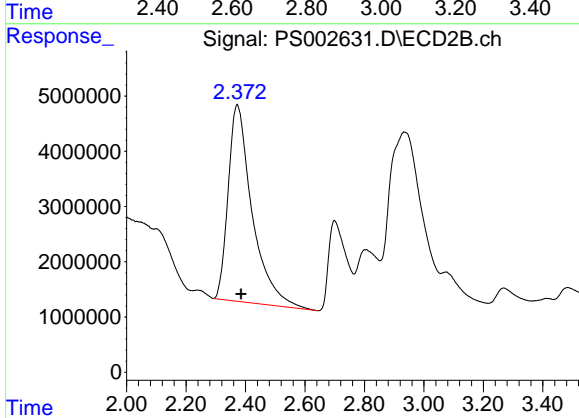




#1 Dalapon

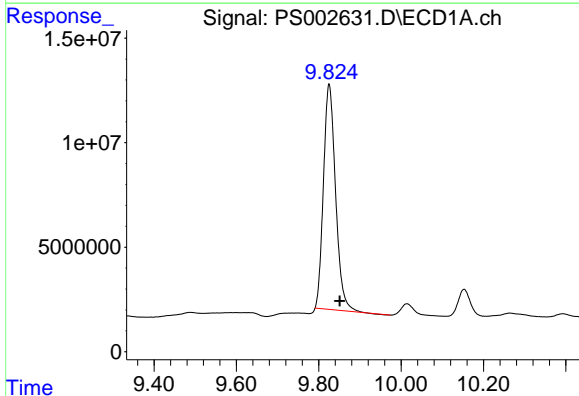
R.T.: 2.925 min
Delta R.T.: -0.019 min
Response: 181327335
Conc: 393.92 ng/ml

Instrument :
ECD_S
ClientSampled :



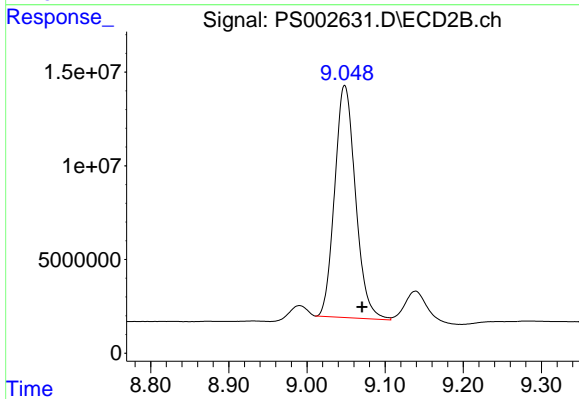
#1 Dalapon

R.T.: 2.372 min
Delta R.T.: -0.013 min
Response: 199306496
Conc: 437.91 ng/ml



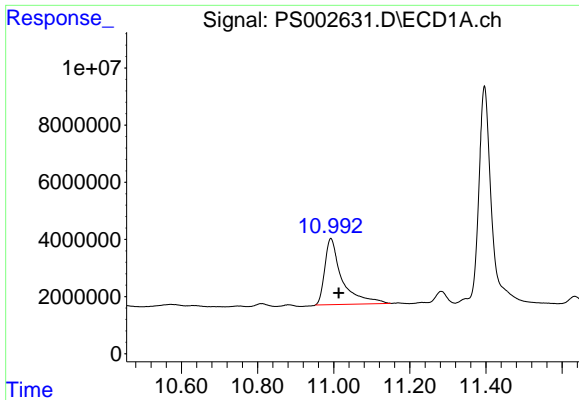
#2 3,5-DICHLOROBENZOIC ACID

R.T.: 9.825 min
Delta R.T.: -0.025 min
Response: 219667424
Conc: 459.74 ng/ml



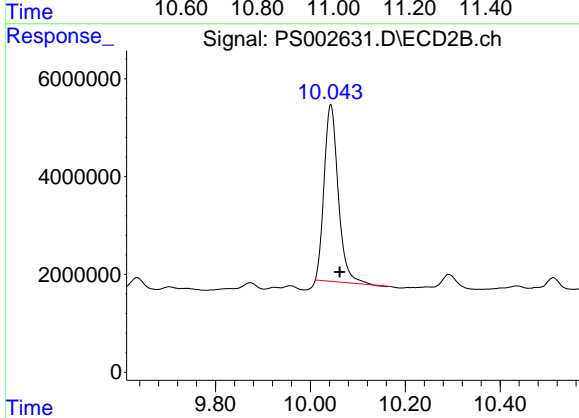
#2 3,5-DICHLOROBENZOIC ACID

R.T.: 9.048 min
Delta R.T.: -0.022 min
Response: 229245217
Conc: 477.05 ng/ml

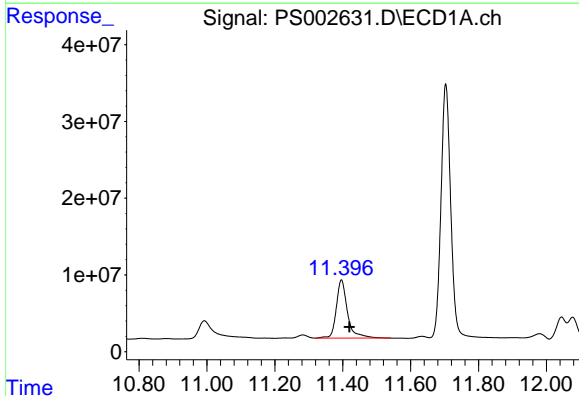


#3 4-Nitrophenol
 R.T.: 10.993 min
 Delta R.T.: -0.020 min
 Response: 73253718
 Conc: 462.35 ng/ml

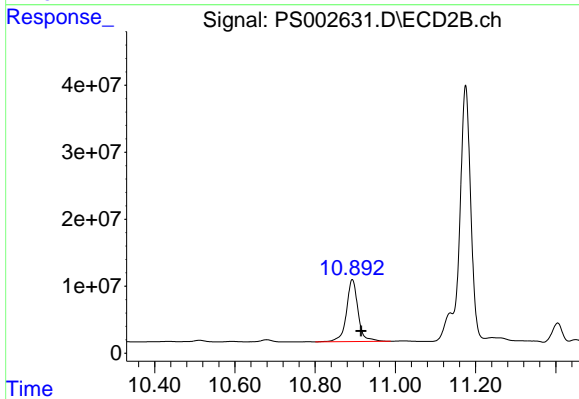
Instrument :
 ECD_S
 ClientSampled :



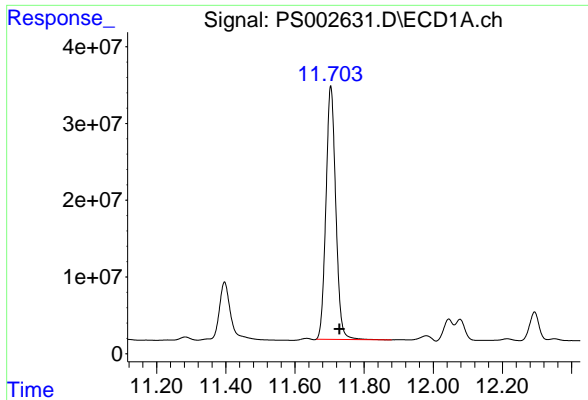
#3 4-Nitrophenol
 R.T.: 10.043 min
 Delta R.T.: -0.019 min
 Response: 74405590
 Conc: 416.28 ng/ml



#4 2,4-DCAA
 R.T.: 11.396 min
 Delta R.T.: -0.024 min
 Response: 173143552
 Conc: 545.47 ng/ml

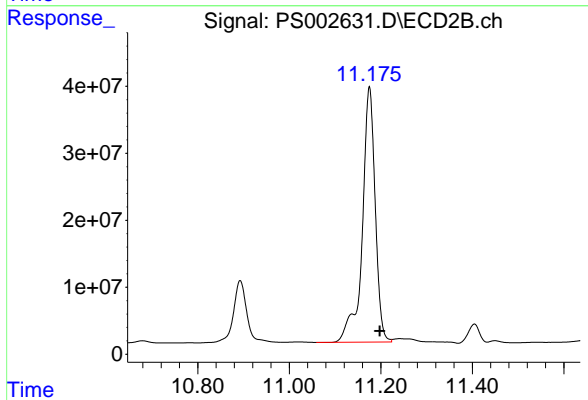


#4 2,4-DCAA
 R.T.: 10.893 min
 Delta R.T.: -0.022 min
 Response: 185407680
 Conc: 479.37 ng/ml

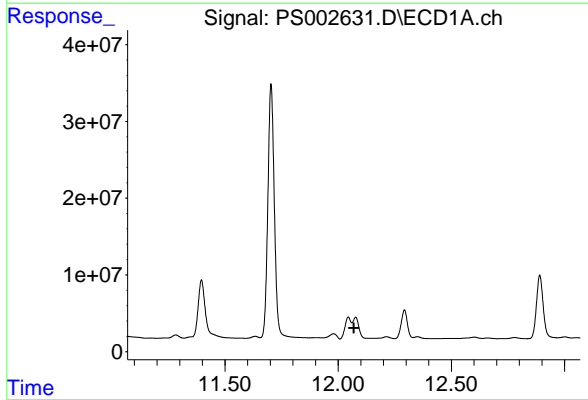


#5 DICAMBA
 R.T.: 11.704 min
 Delta R.T.: -0.025 min
 Response: 650116235
 Conc: 459.78 ng/ml

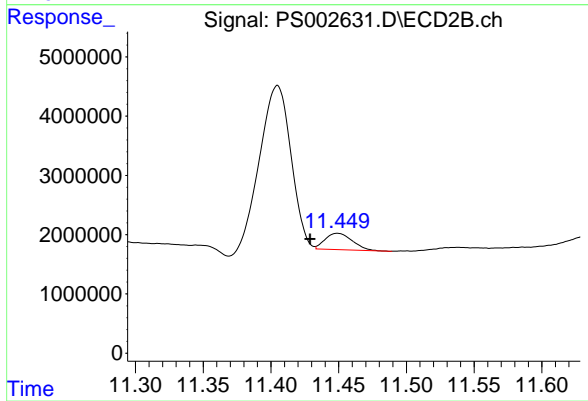
Instrument :
 ECD_S
 ClientSampleId :



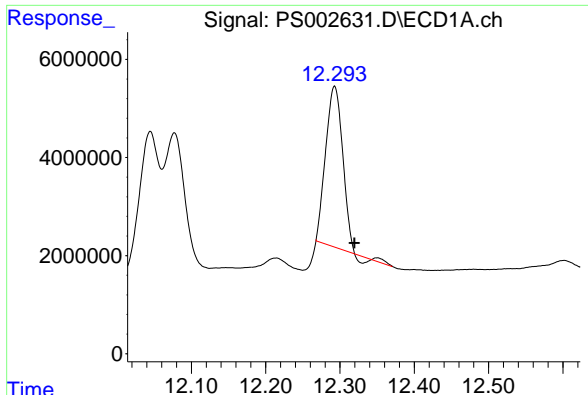
#5 DICAMBA
 R.T.: 11.175 min
 Delta R.T.: -0.023 min
 Response: 748104967
 Conc: 524.76 ng/ml



#6 MCP
 R.T.: 0.000 min
 Exp R.T. : 12.069 min
 Response: 0
 Conc: N.D.



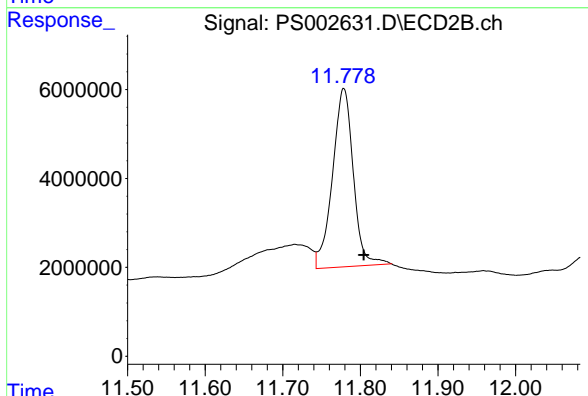
#6 MCP
 R.T.: 11.449 min
 Delta R.T.: 0.020 min
 Response: 3857252
 Conc: 4.13 ug/ml



#7 MCPA

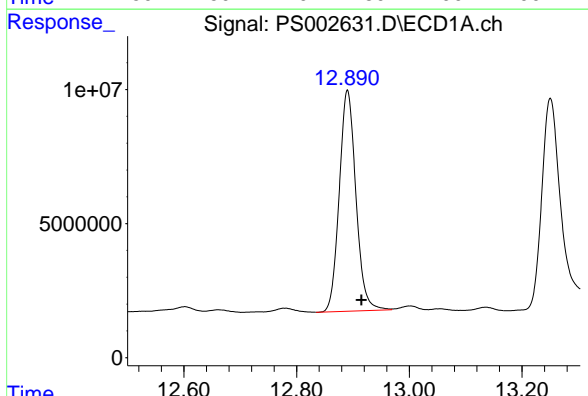
R.T.: 12.293 min
 Delta R.T.: -0.027 min
 Response: 51144230
 Conc: 33.95 ug/ml

Instrument :
 ECD_S
 ClientSampled :



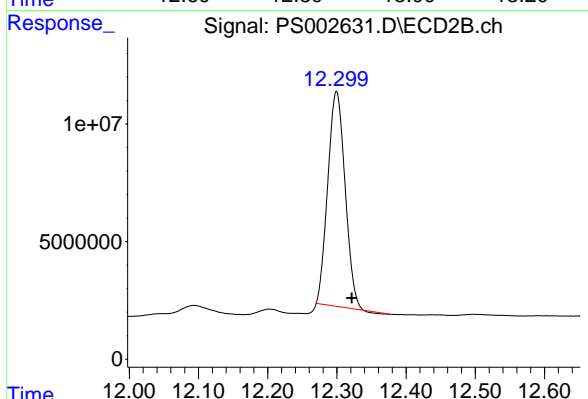
#7 MCPA

R.T.: 11.779 min
 Delta R.T.: -0.026 min
 Response: 74918594
 Conc: 52.12 ug/ml



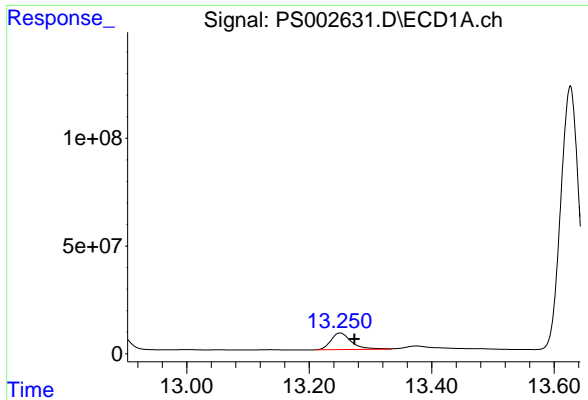
#8 DICHLORPROP

R.T.: 12.890 min
 Delta R.T.: -0.025 min
 Response: 168870220
 Conc: 474.91 ng/ml



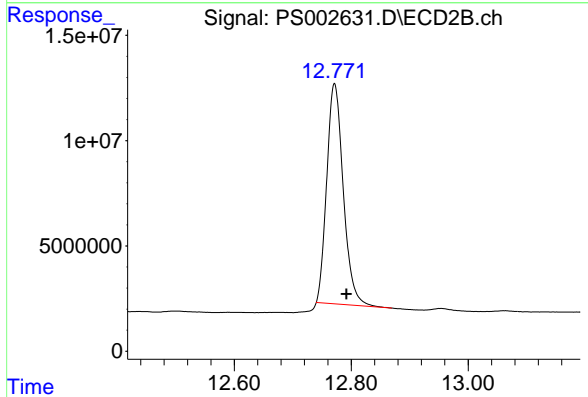
#8 DICHLORPROP

R.T.: 12.299 min
 Delta R.T.: -0.022 min
 Response: 158064579
 Conc: 441.95 ng/ml

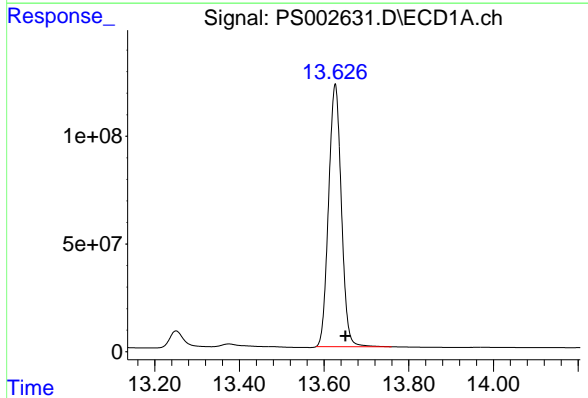


#9 2,4-D
 R.T.: 13.251 min
 Delta R.T.: -0.023 min
 Response: 180844961
 Conc: 514.71 ng/ml

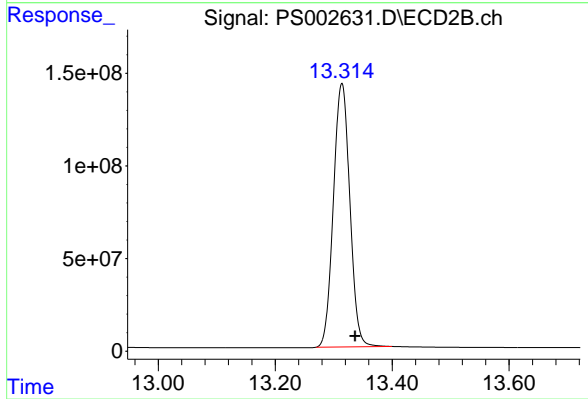
Instrument :
 ECD_S
 ClientSampled :



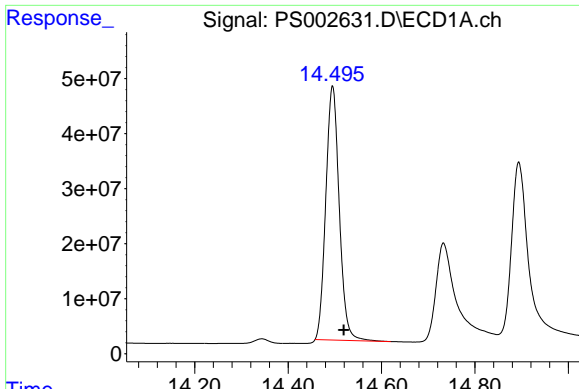
#9 2,4-D
 R.T.: 12.771 min
 Delta R.T.: -0.020 min
 Response: 205294027
 Conc: 484.68 ng/ml



#10 Pentachlorophenol
 R.T.: 13.626 min
 Delta R.T.: -0.025 min
 Response: 2544101920
 Conc: 507.35 ng/ml



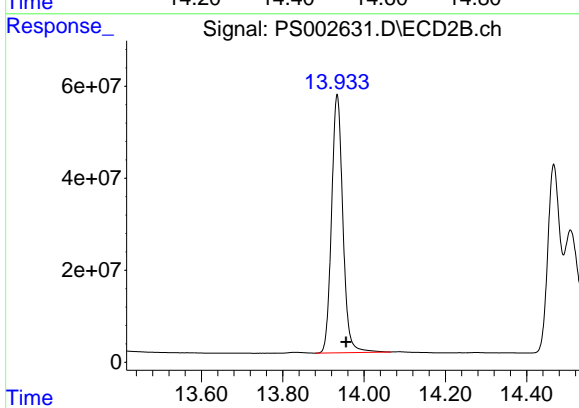
#10 Pentachlorophenol
 R.T.: 13.314 min
 Delta R.T.: -0.023 min
 Response: 2776325142
 Conc: 527.71 ng/ml



#11 2,4,5-TP (SILVEX)

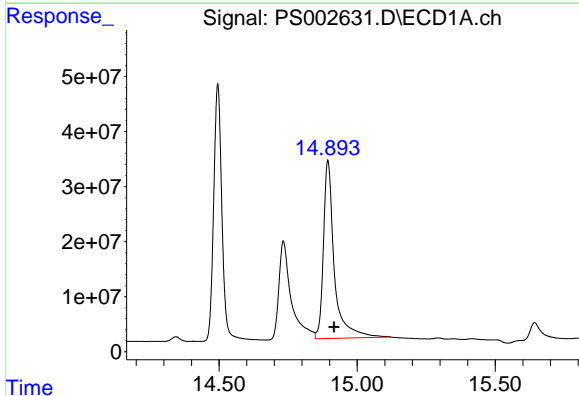
R.T.: 14.495 min
 Delta R.T.: -0.024 min
 Response: 921093474
 Conc: 474.60 ng/ml

Instrument :
 ECD_S
 ClientSampleId :



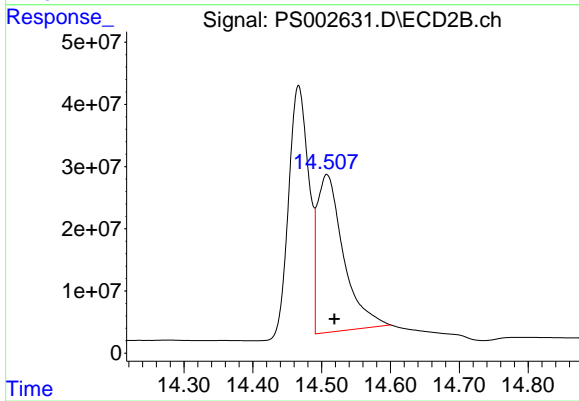
#11 2,4,5-TP (SILVEX)

R.T.: 13.934 min
 Delta R.T.: -0.022 min
 Response: 1081162402
 Conc: 514.95 ng/ml



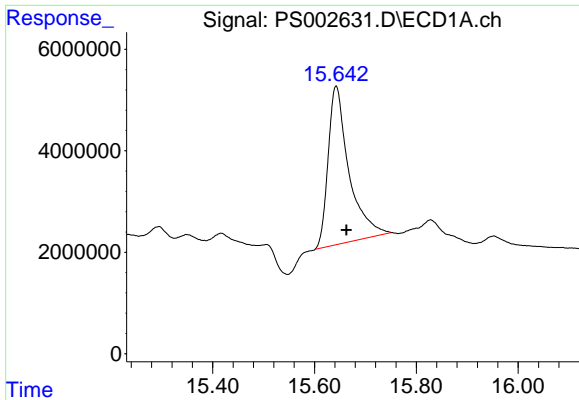
#12 2,4,5-T

R.T.: 14.894 min
 Delta R.T.: -0.022 min
 Response: 886609918
 Conc: 471.96 ng/ml



#12 2,4,5-T

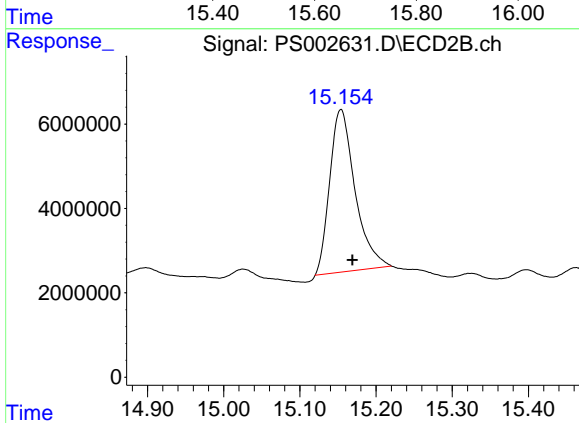
R.T.: 14.508 min
 Delta R.T.: -0.011 min
 Response: 670665977
 Conc: 392.02 ng/ml



#13 2,4-DB

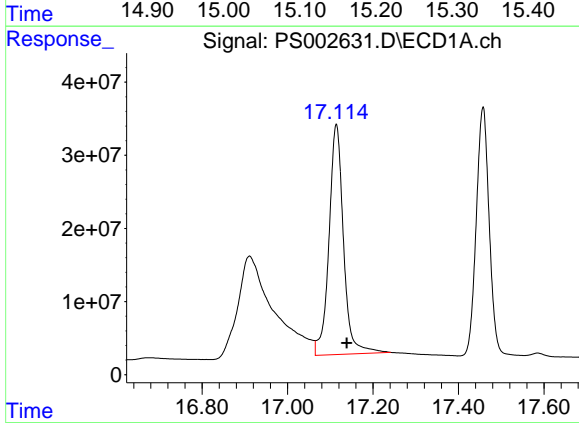
R.T.: 15.643 min
 Delta R.T.: -0.020 min
 Response: 89226039
 Conc: 394.52 ng/ml

Instrument :
 ECD_S
 ClientSampled :



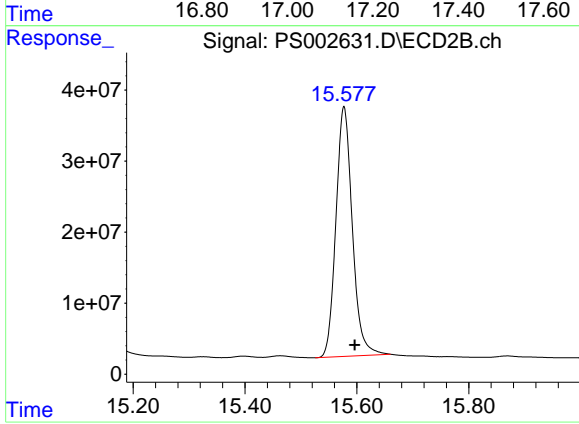
#13 2,4-DB

R.T.: 15.154 min
 Delta R.T.: -0.015 min
 Response: 89101164
 Conc: 367.80 ng/ml



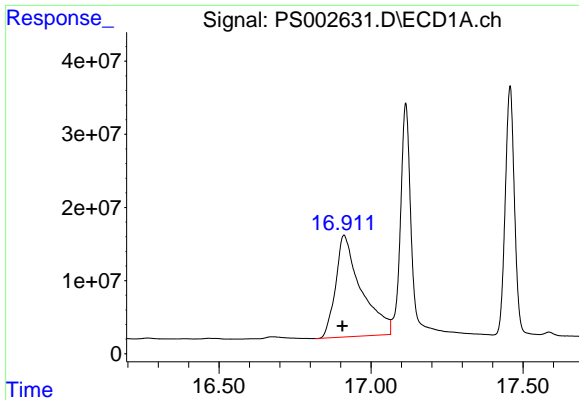
#14 DINOSEB

R.T.: 17.114 min
 Delta R.T.: -0.024 min
 Response: 743346537
 Conc: 510.81 ng/ml



#14 DINOSEB

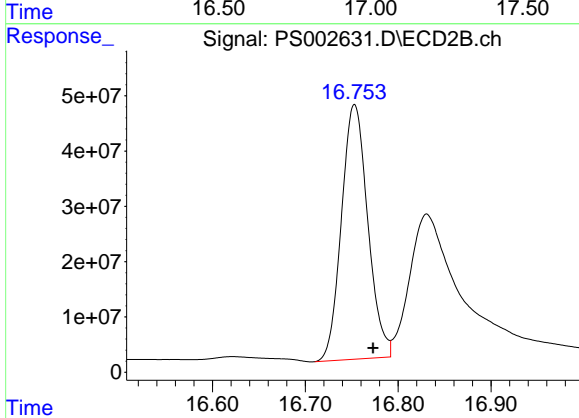
R.T.: 15.577 min
 Delta R.T.: -0.019 min
 Response: 715820167
 Conc: 469.06 ng/ml



#15 Picloram

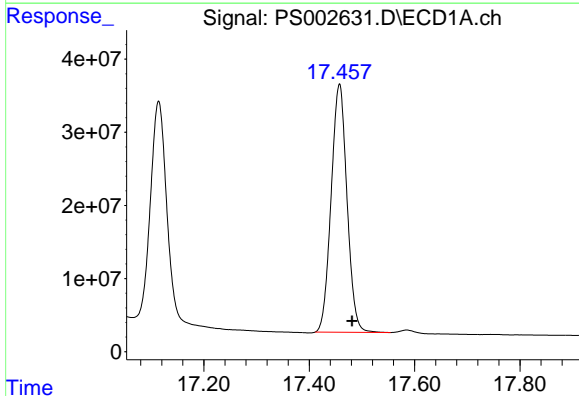
R.T.: 16.912 min
 Delta R.T.: 0.006 min
 Response: 811828489
 Conc: 319.89 ng/ml

Instrument :
 ECD_S
 ClientSampleId :



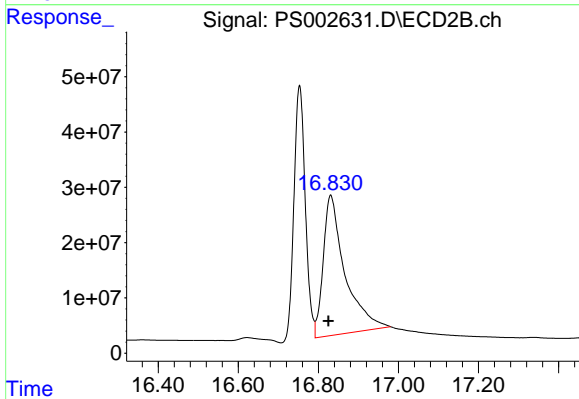
#15 Picloram

R.T.: 16.753 min
 Delta R.T.: -0.020 min
 Response: 907170709
 Conc: 329.74 ng/ml



#16 DCPA

R.T.: 17.457 min
 Delta R.T.: -0.024 min
 Response: 708794476
 Conc: 291.67 ng/ml



#16 DCPA

R.T.: 16.831 min
 Delta R.T.: 0.006 min
 Response: 953266403
 Conc: 328.13 ng/ml