

Data Path : Z:\pestpcbsrv\HPCHEM1\ECD_S\Data\PS121718\
 Data File : PS002633.D
 Signal(s) : Signal #1: ECD1A.ch Signal #2: ECD2B.ch
 Acq On : 17 Dec 2018 20:42
 Operator : EI\SJ
 Sample : I.BLK
 Misc :
 ALS Vial : 2 Sample Multiplier: 1

Instrument :
 ECD_S
 ClientSampleId :

Integration File signal 1: autoint1.e
 Integration File signal 2: autoint2.e
 Quant Time: Dec 18 02:20:21 2018
 Quant Method : Z:\pestpcbsrv\HPCHEM1\ECD_S\Method\PS120618.M
 Quant Title : 8080.M
 QLast Update : Mon Dec 10 06:14:54 2018
 Response via : Initial Calibration
 Integrator: ChemStation

Volume Inj. : 2 µl
 Signal #1 Phase : Rtx-CLPesticides Signal #2 Phase: Rtx-CLPesticides2
 Signal #1 Info : 30M x 0.32mm x0.5 Signal #2 Info : 30M x 0.32mm x 0.25µm

Compound	RT#1	RT#2	Resp#1	Resp#2	ng/ml	ng/ml

System Monitoring Compounds						
4) S 2,4-DCAA	11.401	10.896	137.7E6	152.7E6	433.735	394.913
Target Compounds						
7) T MCPA	0.000	11.799	0	1312407	N.D.	0.913 #

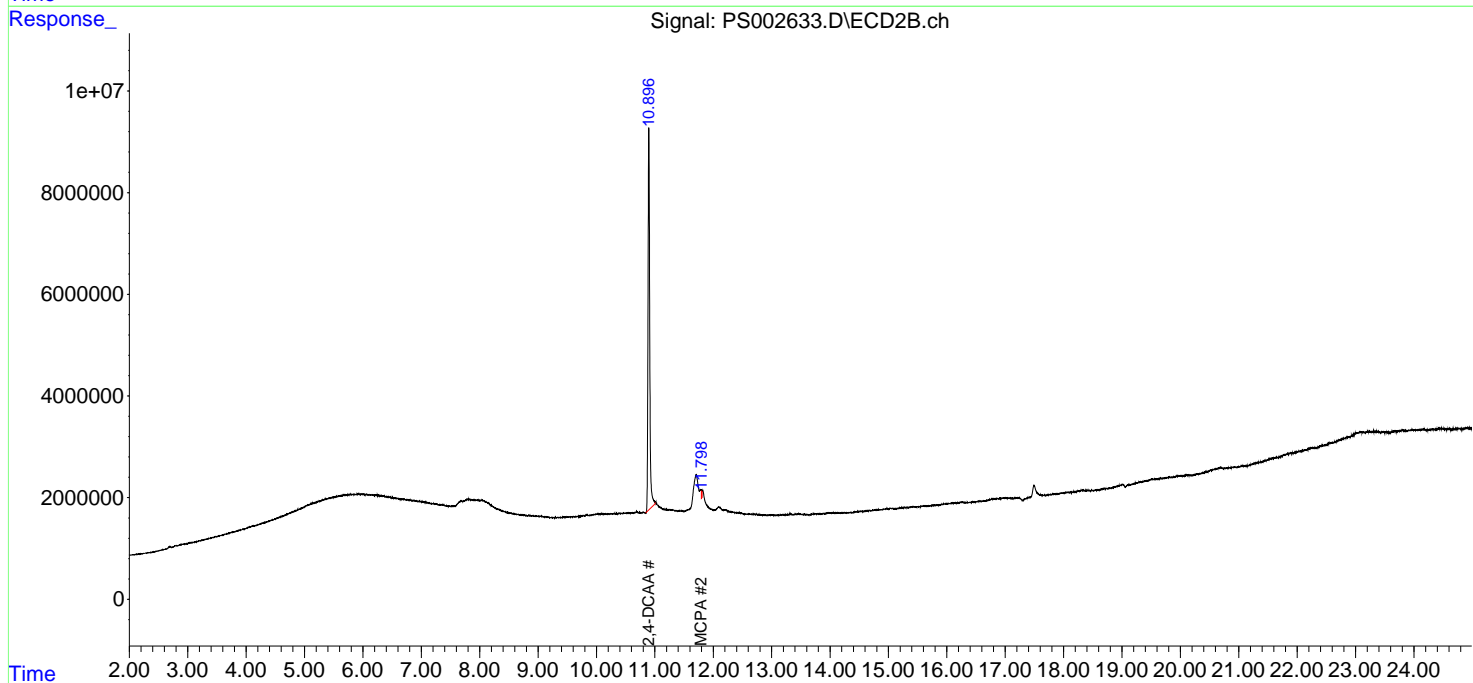
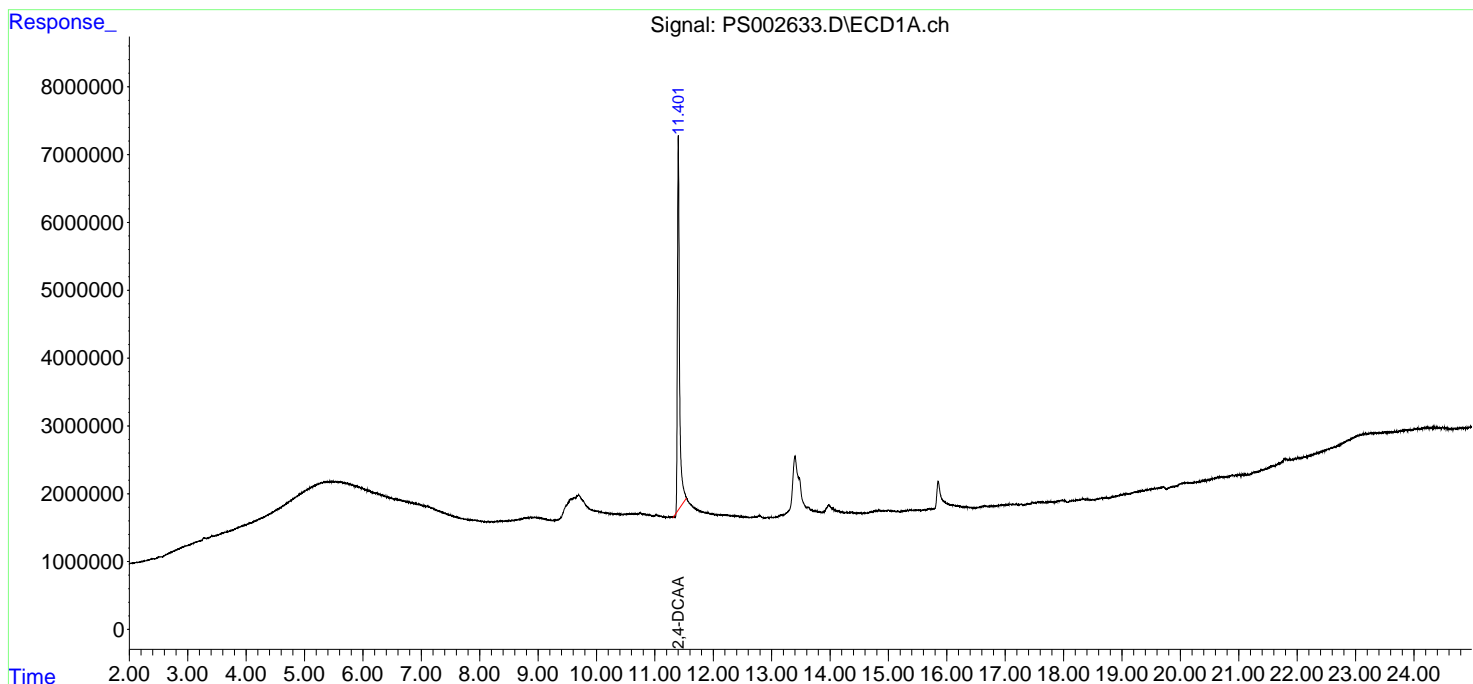
(f)=RT Delta > 1/2 Window (#)=Amounts differ by > 25% (m)=manual int.

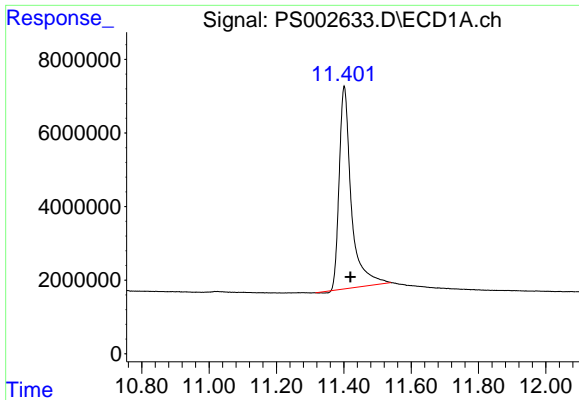
Data Path : Z:\pestpcbsrv\HPCHEM1\ECD_S\Data\PS121718\
 Data File : PS002633.D
 Signal(s) : Signal #1: ECD1A.ch Signal #2: ECD2B.ch
 Acq On : 17 Dec 2018 20:42
 Operator : EI\SJ
 Sample : I.BLK
 Misc :
 ALS Vial : 2 Sample Multiplier: 1

Instrument :
 ECD_S
 ClientSampleId :

Integration File signal 1: autoint1.e
 Integration File signal 2: autoint2.e
 Quant Time: Dec 18 02:20:21 2018
 Quant Method : Z:\pestpcbsrv\HPCHEM1\ECD_S\Method\PS120618.M
 Quant Title : 8080.M
 QLast Update : Mon Dec 10 06:14:54 2018
 Response via : Initial Calibration
 Integrator: ChemStation

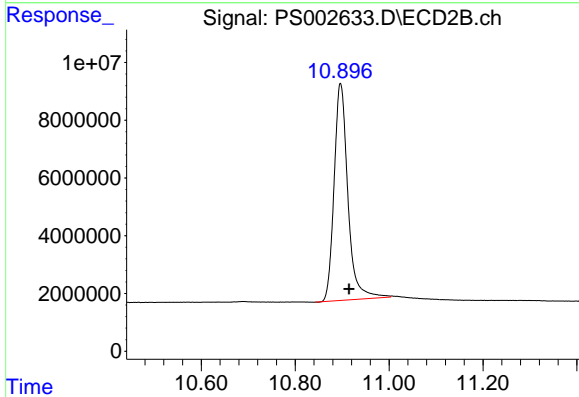
Volume Inj. : 2 µl
 Signal #1 Phase : Rtx-CLPesticides Signal #2 Phase: Rtx-CLPesticides2
 Signal #1 Info : 30M x 0.32mm x 0.5 Signal #2 Info : 30M x 0.32mm x 0.25µm



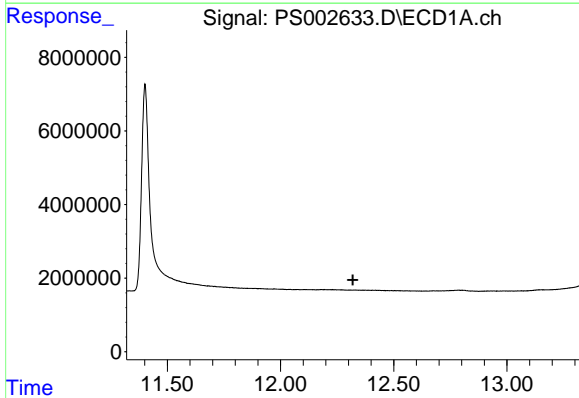


#4 2,4-DCAA
 R.T.: 11.401 min
 Delta R.T.: -0.019 min
 Response: 137676142
 Conc: 433.74 ng/ml

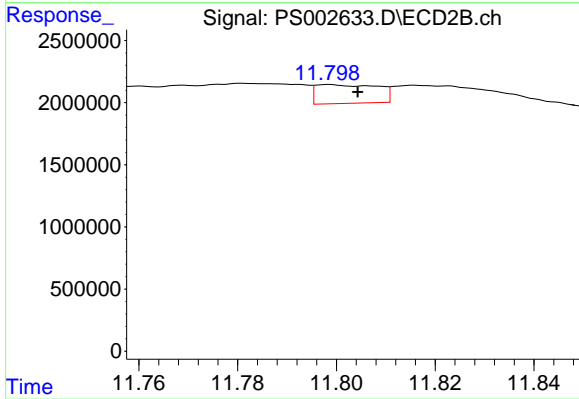
Instrument :
 ECD_S
 ClientSampleId :



#4 2,4-DCAA
 R.T.: 10.896 min
 Delta R.T.: -0.019 min
 Response: 152740293
 Conc: 394.91 ng/ml



#7 MCPA
 R.T.: 0.000 min
 Exp R.T. : 12.319 min
 Response: 0
 Conc: N.D.



#7 MCPA
 R.T.: 11.799 min
 Delta R.T.: -0.006 min
 Response: 1312407
 Conc: 0.91 ug/ml