

Data Path : Z:\pestpcbsrv\HPCHEM1\ECD_S\Data\PS121718\
 Data File : PS002636.D
 Signal(s) : Signal #1: ECD1A.ch Signal #2: ECD2B.ch
 Acq On : 17 Dec 2018 22:15
 Operator : EI\SJ
 Sample : J6347-18
 Misc :
 ALS Vial : 11 Sample Multiplier: 1

Instrument :
 ECD_S
 ClientSampleId :

Integration File signal 1: autoint1.e
 Integration File signal 2: autoint2.e
 Quant Time: Dec 18 02:21:14 2018
 Quant Method : Z:\pestpcbsrv\HPCHEM1\ECD_S\Method\PS120618.M
 Quant Title : 8080.M
 QLast Update : Mon Dec 10 06:14:54 2018
 Response via : Initial Calibration
 Integrator: ChemStation

Volume Inj. : 2 µl
 Signal #1 Phase : Rtx-CLPesticides Signal #2 Phase: Rtx-CLPesticides2
 Signal #1 Info : 30M x 0.32mm x0.5 Signal #2 Info : 30M x 0.32mm x 0.25µm

Compound	RT#1	RT#2	Resp#1	Resp#2	ng/ml	ng/ml

System Monitoring Compounds						
4) S 2,4-DCAA	11.392	10.889	168.6E6	170.0E6	531.067	439.542
Target Compounds						
1) T Dalapon	0.000	2.329	0	16140460	N.D.	35.463 #
2) T 3,5-DICHL...	0.000	9.134	0	31211969	N.D.	64.951 #
5) T DICAMBA	0.000	11.240	0	10568230	N.D.	7.413 #
6) T MCPP	12.073	0.000	58654797	0	58.787	N.D. #
7) T MCPA	12.346	0.000	1813816	0	1.204	N.D. #

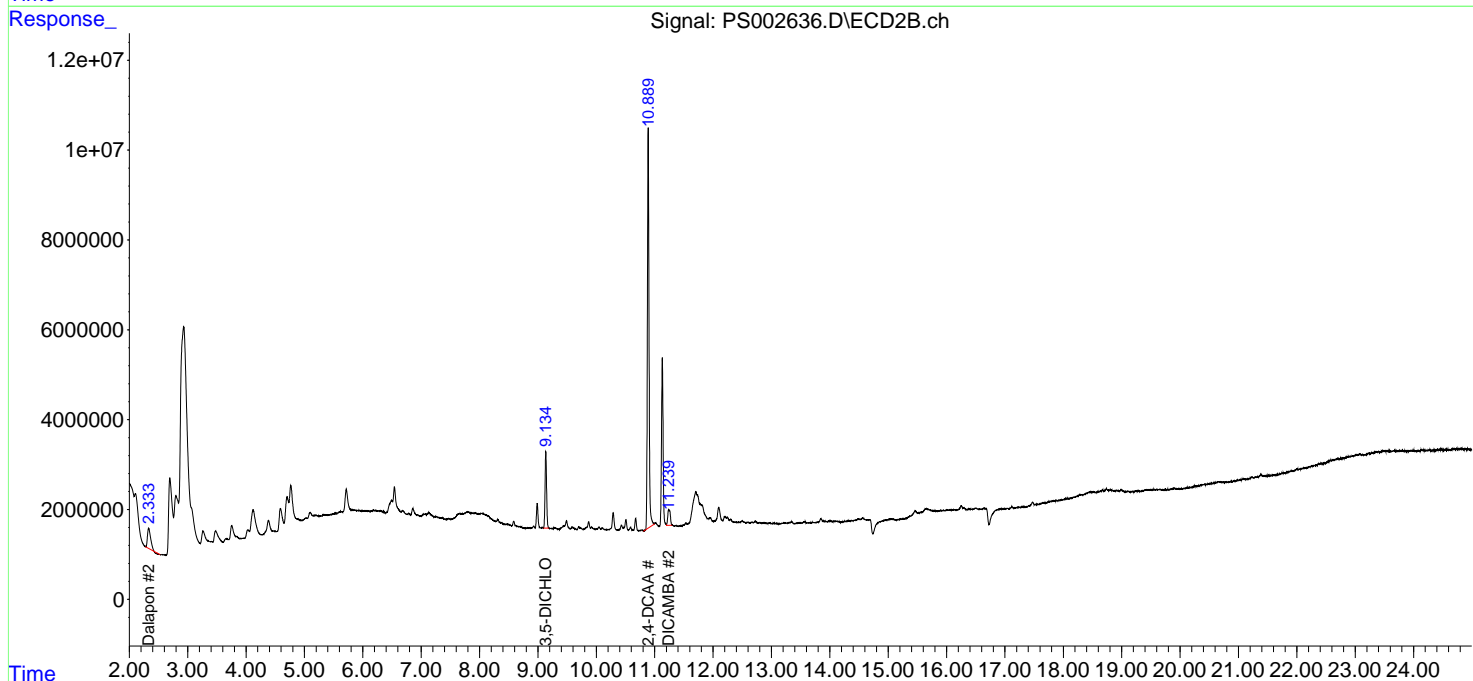
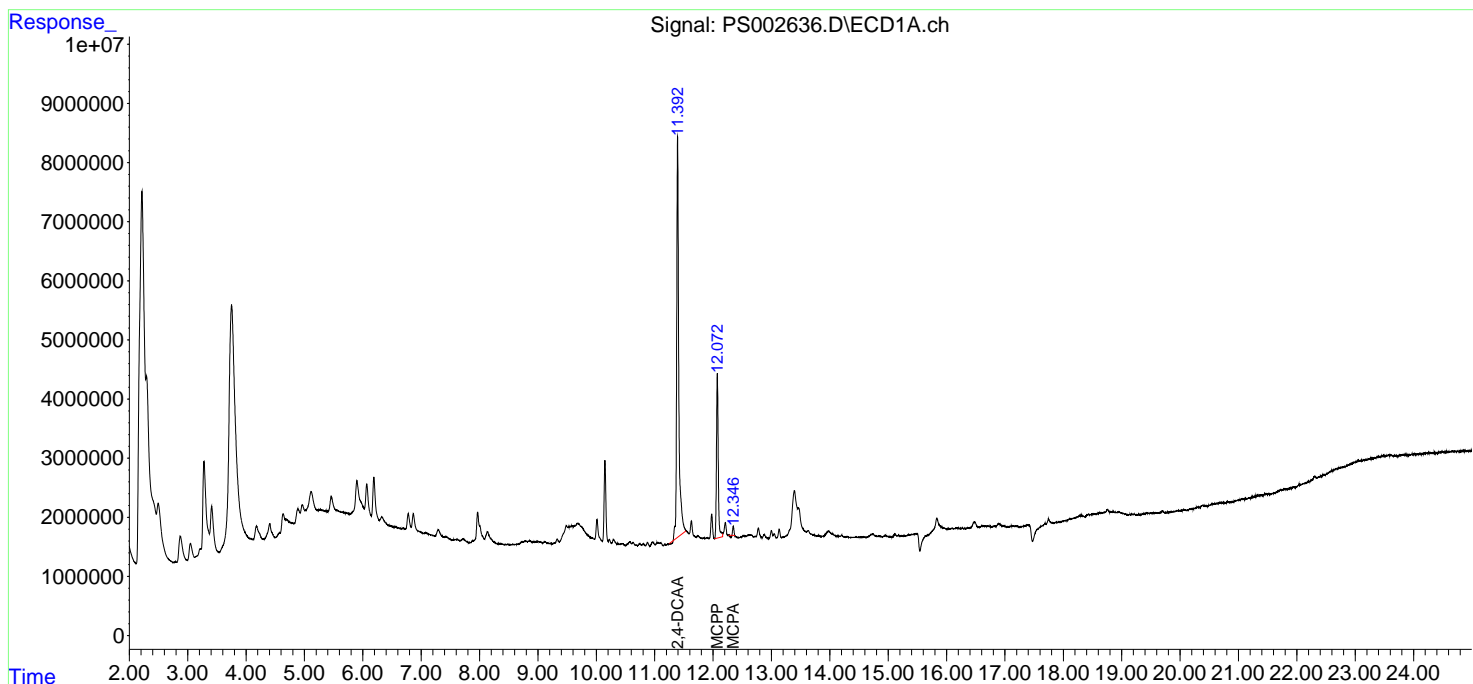
(f)=RT Delta > 1/2 Window (#)=Amounts differ by > 25% (m)=manual int.

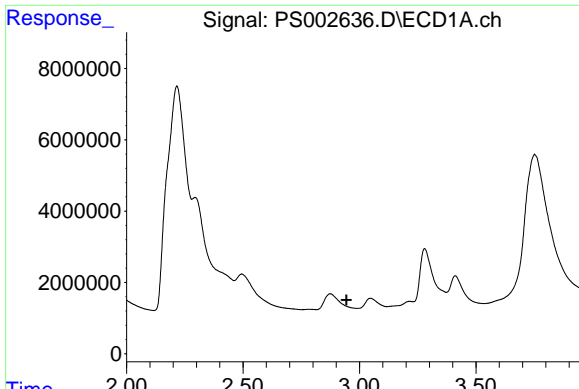
Data Path : Z:\pestpcbsrv\HPCHEM1\ECD_S\Data\PS121718\
 Data File : PS002636.D
 Signal(s) : Signal #1: ECD1A.ch Signal #2: ECD2B.ch
 Acq On : 17 Dec 2018 22:15
 Operator : EI\SJ
 Sample : J6347-18
 Misc :
 ALS Vial : 11 Sample Multiplier: 1

Instrument :
 ECD_S
 ClientSampleId :

Integration File signal 1: autoint1.e
 Integration File signal 2: autoint2.e
 Quant Time: Dec 18 02:21:14 2018
 Quant Method : Z:\pestpcbsrv\HPCHEM1\ECD_S\Method\PS120618.M
 Quant Title : 8080.M
 QLast Update : Mon Dec 10 06:14:54 2018
 Response via : Initial Calibration
 Integrator: ChemStation

Volume Inj. : 2 µl
 Signal #1 Phase : Rtx-CLPesticides Signal #2 Phase: Rtx-CLPesticides2
 Signal #1 Info : 30M x 0.32mm x 0.5 Signal #2 Info : 30M x 0.32mm x 0.25µm

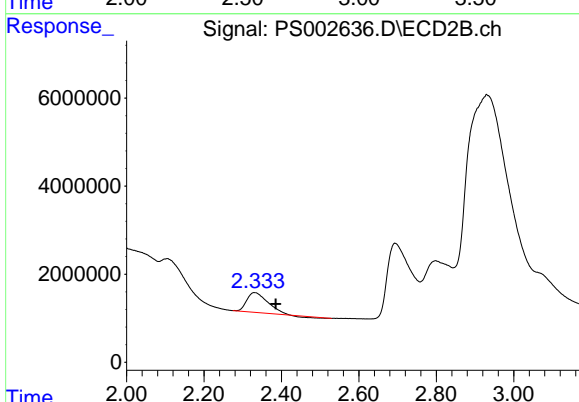




#1 Dalapon

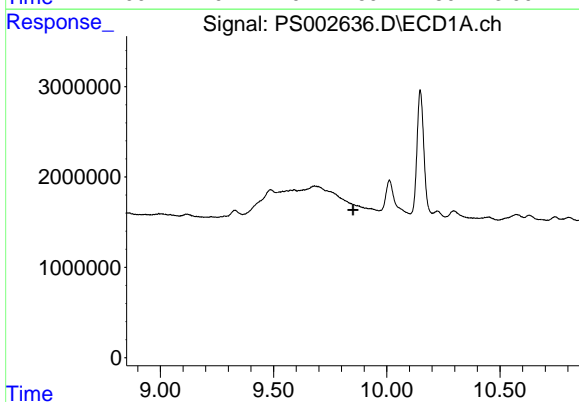
R.T.: 0.000 min
 Exp R.T. : 2.944 min
 Response: 0
 Conc: N.D.

Instrument :
 ECD_S
 ClientSampled :



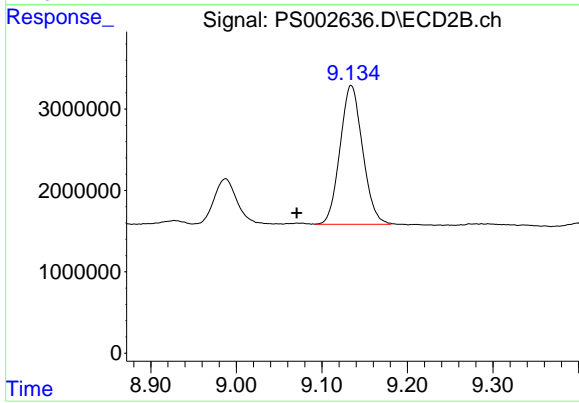
#1 Dalapon

R.T.: 2.329 min
 Delta R.T.: -0.056 min
 Response: 16140460
 Conc: 35.46 ng/ml



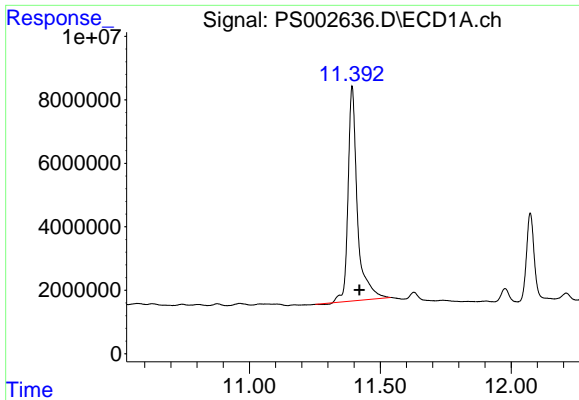
#2 3,5-DICHLOROBENZOIC ACID

R.T.: 0.000 min
 Exp R.T. : 9.851 min
 Response: 0
 Conc: N.D.



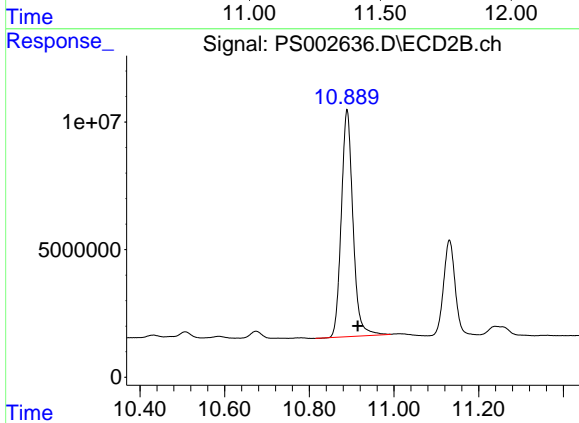
#2 3,5-DICHLOROBENZOIC ACID

R.T.: 9.134 min
 Delta R.T.: 0.064 min
 Response: 31211969
 Conc: 64.95 ng/ml

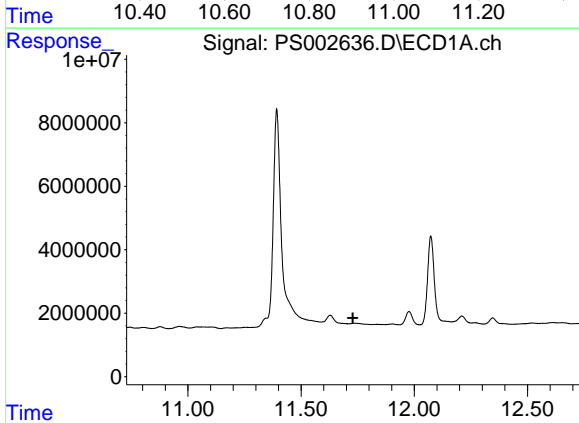


#4 2,4-DCAA
 R.T.: 11.392 min
 Delta R.T.: -0.028 min
 Response: 168571089
 Conc: 531.07 ng/ml

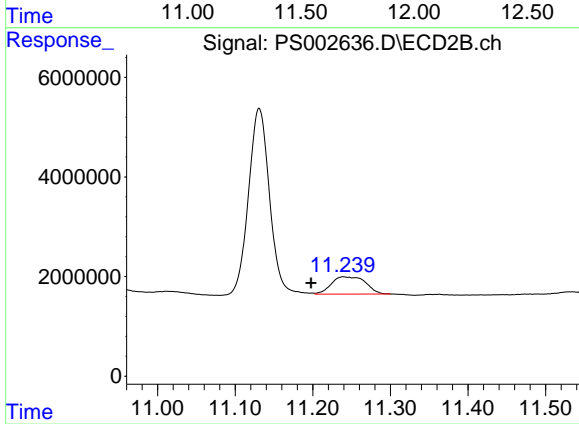
Instrument :
 ECD_S
 ClientSampled :



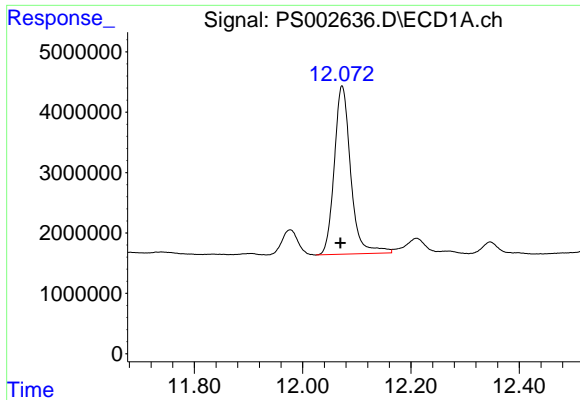
#4 2,4-DCAA
 R.T.: 10.889 min
 Delta R.T.: -0.026 min
 Response: 170001674
 Conc: 439.54 ng/ml



#5 DICAMBA
 R.T.: 0.000 min
 Exp R.T. : 11.729 min
 Response: 0
 Conc: N.D.



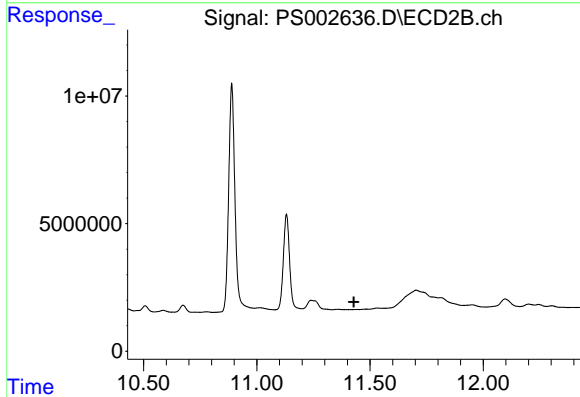
#5 DICAMBA
 R.T.: 11.240 min
 Delta R.T.: 0.042 min
 Response: 10568230
 Conc: 7.41 ng/ml



#6 MCPP

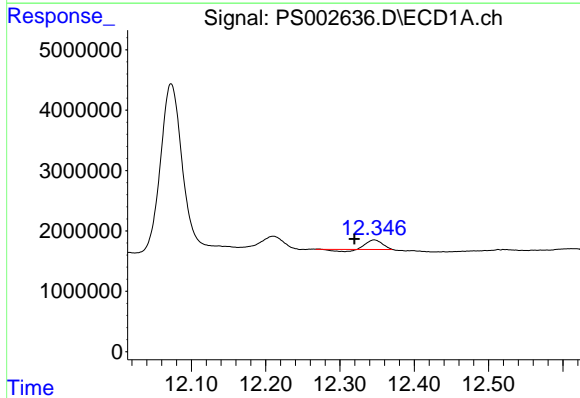
R.T.: 12.073 min
 Delta R.T.: 0.003 min
 Response: 58654797
 Conc: 58.79 ug/ml

Instrument :
 ECD_S
 ClientSampled :



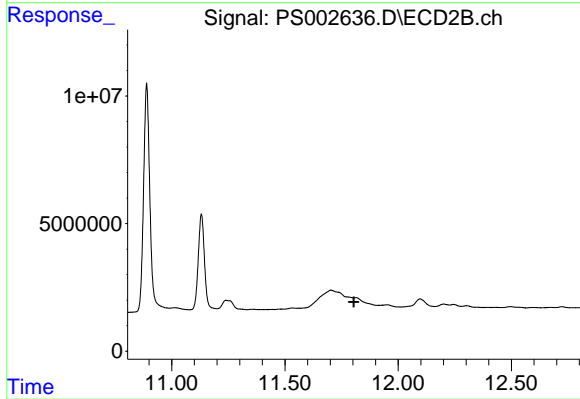
#6 MCPP

R.T.: 0.000 min
 Exp R.T. : 11.429 min
 Response: 0
 Conc: N.D.



#7 MCPA

R.T.: 12.346 min
 Delta R.T.: 0.027 min
 Response: 1813816
 Conc: 1.20 ug/ml



#7 MCPA

R.T.: 0.000 min
 Exp R.T. : 11.804 min
 Response: 0
 Conc: N.D.