

Data Path : Z:\pestpcbsrv\HPCHEM1\ECD\_S\Data\PS121721\  
 Data File : PS017757.D  
 Signal(s) : Signal #1: ECD1A.ch Signal #2: ECD2B.ch  
 Acq On : 17 Dec 2021 18:22  
 Operator : AJ\MA  
 Sample : M5064-01  
 Misc :  
 ALS Vial : 15 Sample Multiplier: 1

Instrument :  
 ECD\_S  
 ClientSampleId :

Integration File signal 1: autoint1.e  
 Integration File signal 2: autoint2.e  
 Quant Time: Dec 17 22:35:34 2021  
 Quant Method : Z:\pestpcbsrv\HPCHEM1\ECD\_S\Method\PS121421.M  
 Quant Title : 8080.M  
 QLast Update : Tue Dec 14 13:29:21 2021  
 Response via : Initial Calibration  
 Integrator: ChemStation

Volume Inj. : 2 µl  
 Signal #1 Phase : Rtx-CLPesticides Signal #2 Phase: Rtx-CLPesticides2  
 Signal #1 Info : 30M x 0.32mm x0.5 Signal #2 Info : 30M x 0.32mm x 0.25µm

	Compound	RT#1	RT#2	Resp#1	Resp#2	ng/ml	ng/ml
-----							
System Monitoring Compounds							
4) S	2,4-DCAA	7.125	6.712	634.1E6	247.9E6	405.740	415.939
Target Compounds							
2) T	3,5-DICHL...	6.377	5.940	7774980	85476640	3.480	94.277 #
3) T	4-Nitroph...	6.957	6.370	3125142	6439808	4.621	18.492 #
5) T	DICAMBA	7.326	6.874	25558039	7034313	4.042	2.641 #
6) T	MCPD	7.485	0.000	44531050	0	9.447	N.D. #
7) T	MCPA	7.604	7.162	35132789	20321251	5.312	6.646 #
8) T	DICHLORPROP	7.975	7.519	97460428	10455381	62.374	15.341 #
9) T	2,4-D	8.237	7.772	32828227	11630689	18.569	14.305
10) T	Pentachlo...	8.519	8.135f	56930155	5414671	2.638	<MDL #
11) T	2,4,5-TP ...	9.086	8.598	21739406	5527182	2.556	1.520 #
12) T	2,4,5-T	9.370	8.917	7351712	14659241	<MDL	4.287 #
13) T	2,4-DB	9.874f	9.498f	104.6E6	7536063	70.813	16.634 #
14) T	DINOSEB	11.088	9.750	32024089	31701514	4.683	12.271 #
15) T	Picloram	10.909	10.748	10448564	18173714	<MDL	3.700 #
16) T	DCPA	0.000	10.678	0	26053789	N.D.	5.817
-----							

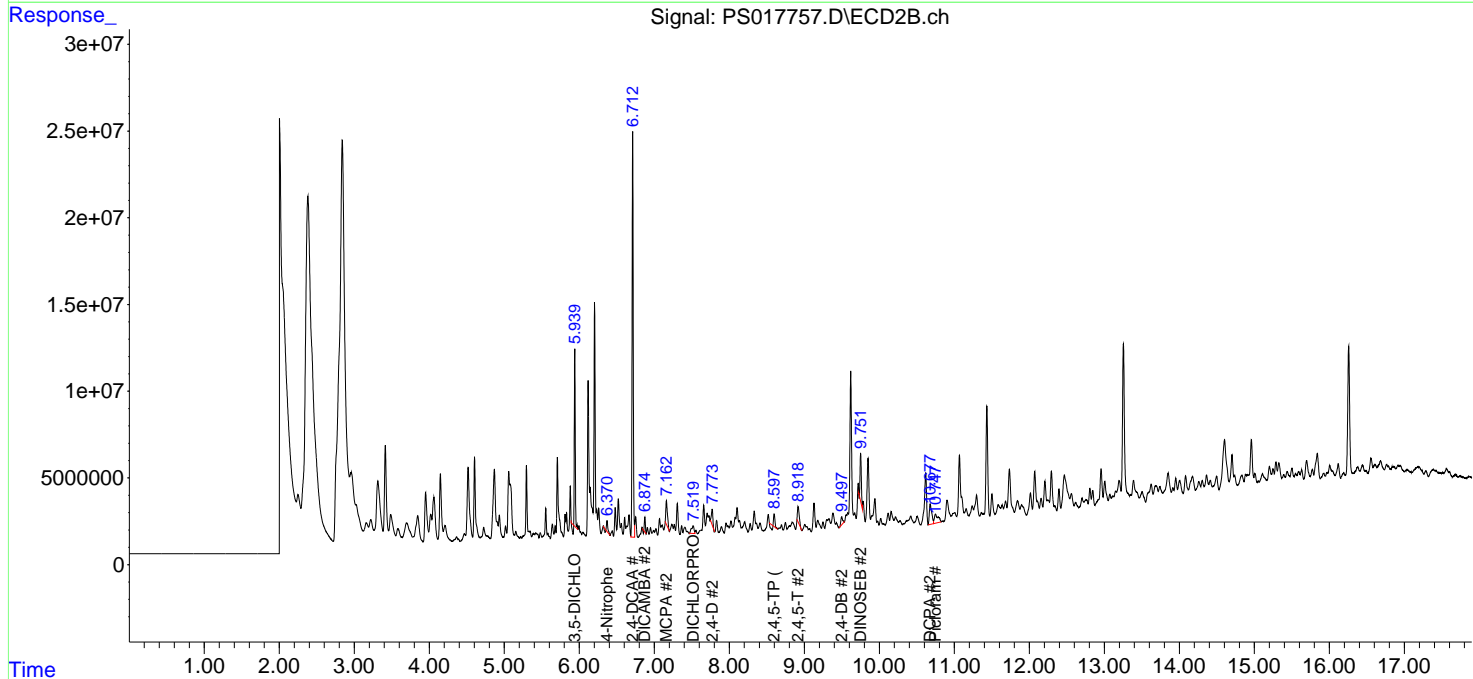
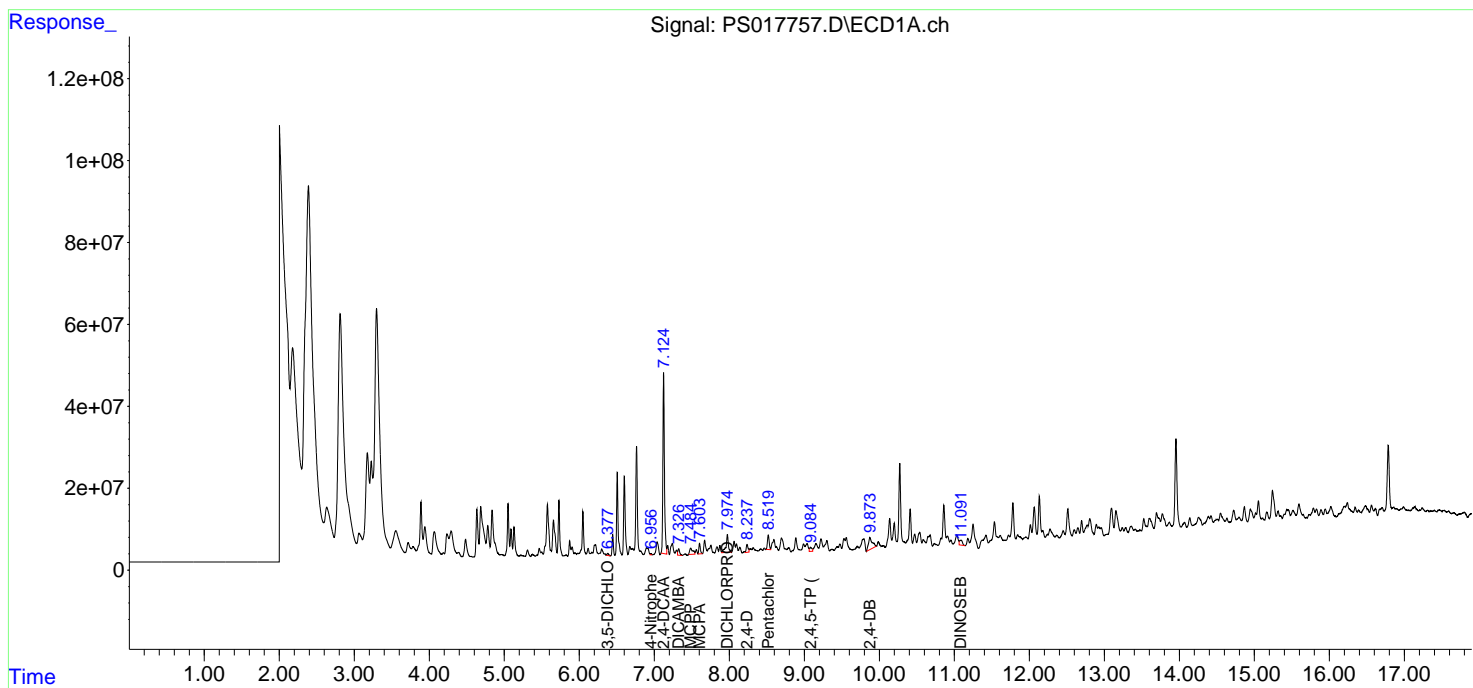
(f)=RT Delta > 1/2 Window (#)=Amounts differ by > 25% (m)=manual int.

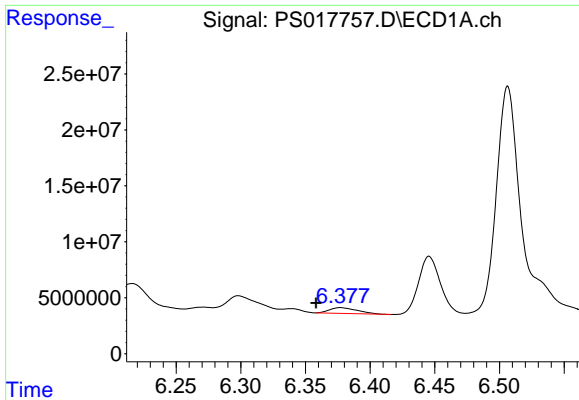
Data Path : Z:\pestpcbsrv\HPCHEM1\ECD\_S\Data\PS121721\  
 Data File : PS017757.D  
 Signal(s) : Signal #1: ECD1A.ch Signal #2: ECD2B.ch  
 Acq On : 17 Dec 2021 18:22  
 Operator : AJ\MA  
 Sample : M5064-01  
 Misc :  
 ALS Vial : 15 Sample Multiplier: 1

Instrument :  
 ECD\_S  
 ClientSampleId :

Integration File signal 1: autoint1.e  
 Integration File signal 2: autoint2.e  
 Quant Time: Dec 17 22:35:34 2021  
 Quant Method : Z:\pestpcbsrv\HPCHEM1\ECD\_S\Method\PS121421.M  
 Quant Title : 8080.M  
 QLast Update : Tue Dec 14 13:29:21 2021  
 Response via : Initial Calibration  
 Integrator: ChemStation

Volume Inj. : 2 µl  
 Signal #1 Phase : Rtx-CLPesticides Signal #2 Phase: Rtx-CLPesticides2  
 Signal #1 Info : 30M x 0.32mm x0.5 Signal #2 Info : 30M x 0.32mm x 0.25µm

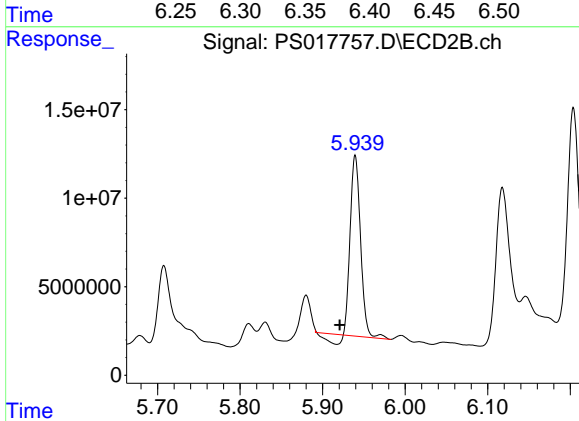




#2 3,5-DICHLORO BENZOIC ACID

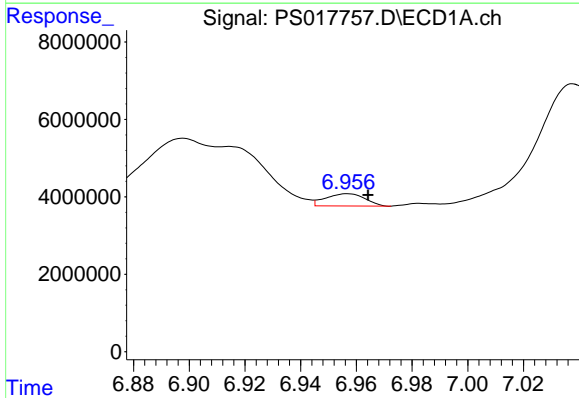
R.T.: 6.377 min  
Delta R.T.: 0.019 min  
Response: 7774980  
Conc: 3.48 ng/ml

Instrument :  
ECD\_S  
ClientSampleId :



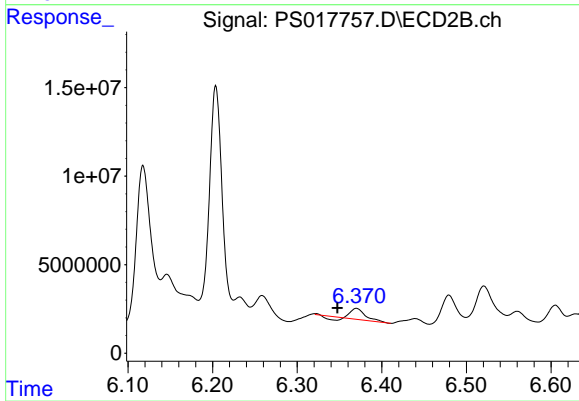
#2 3,5-DICHLORO BENZOIC ACID

R.T.: 5.940 min  
Delta R.T.: 0.019 min  
Response: 85476640  
Conc: 94.28 ng/ml



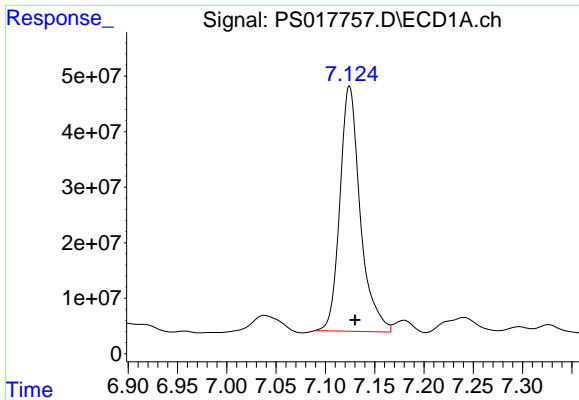
#3 4-Nitrophenol

R.T.: 6.957 min  
Delta R.T.: -0.007 min  
Response: 3125142  
Conc: 4.62 ng/ml



#3 4-Nitrophenol

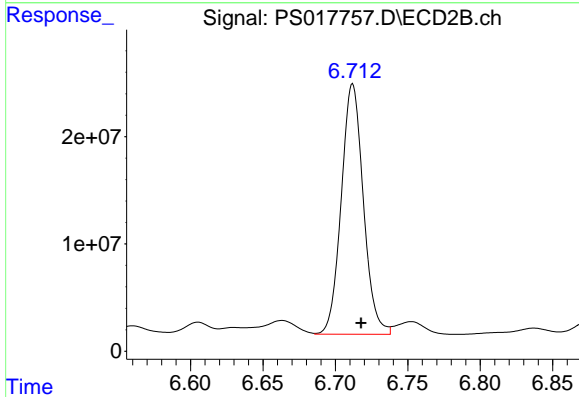
R.T.: 6.370 min  
Delta R.T.: 0.023 min  
Response: 6439808  
Conc: 18.49 ng/ml



#4 2,4-DCAA

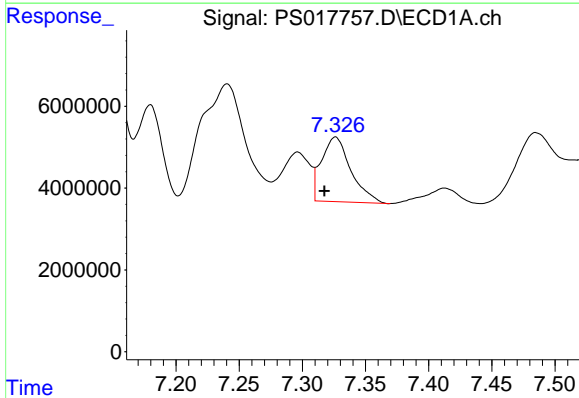
R.T.: 7.125 min  
 Delta R.T.: -0.005 min  
 Response: 634149965  
 Conc: 405.74 ng/ml

Instrument :  
 ECD\_S  
 ClientSampleId :



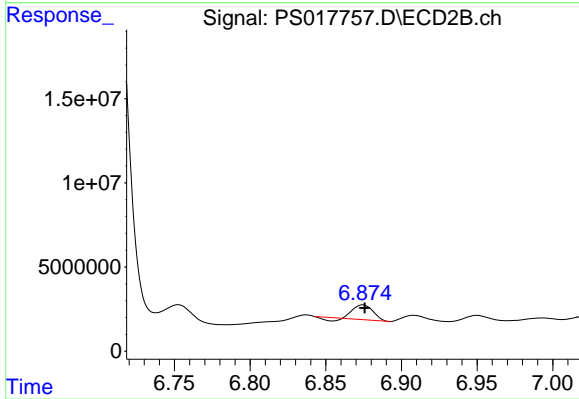
#4 2,4-DCAA

R.T.: 6.712 min  
 Delta R.T.: -0.006 min  
 Response: 247941930  
 Conc: 415.94 ng/ml



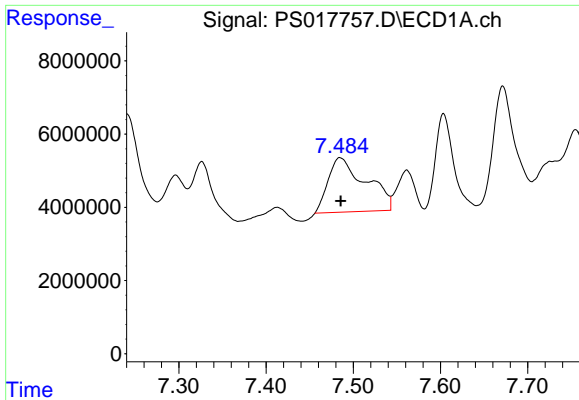
#5 DICAMBA

R.T.: 7.326 min  
 Delta R.T.: 0.009 min  
 Response: 25558039  
 Conc: 4.04 ng/ml



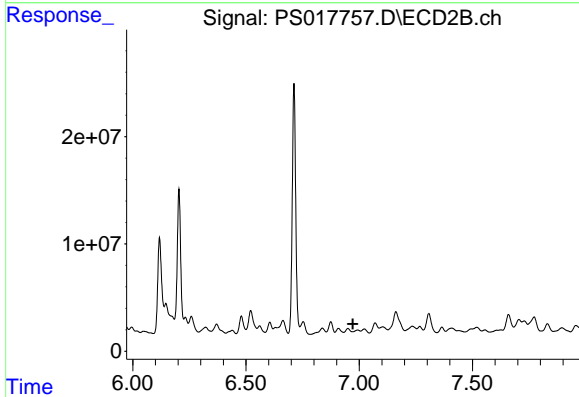
#5 DICAMBA

R.T.: 6.874 min  
 Delta R.T.: -0.001 min  
 Response: 7034313  
 Conc: 2.64 ng/ml

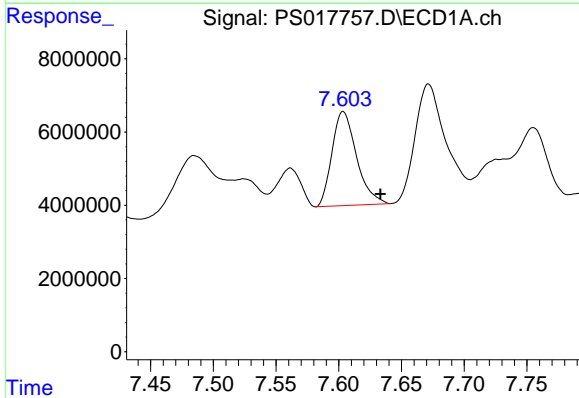


#6 MCPP  
 R.T.: 7.485 min  
 Delta R.T.: 0.000 min  
 Response: 44531050  
 Conc: 9.45 ug/ml

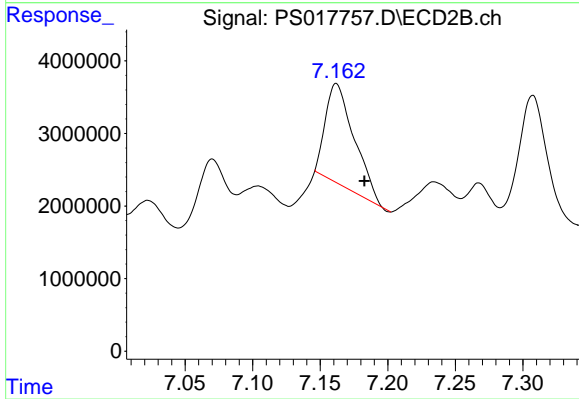
Instrument :  
 ECD\_S  
 ClientSampleId :



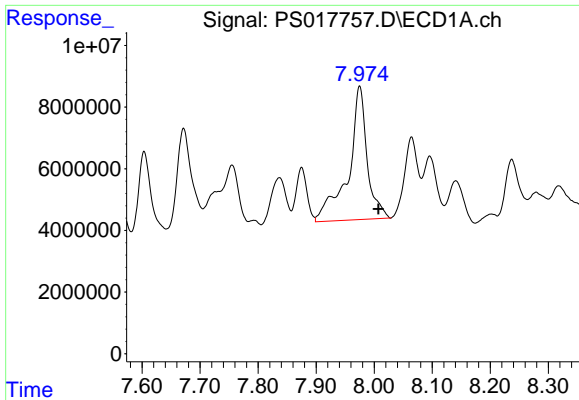
#6 MCPP  
 R.T.: 0.000 min  
 Exp R.T. : 6.972 min  
 Response: 0  
 Conc: N.D.



#7 MCPA  
 R.T.: 7.604 min  
 Delta R.T.: -0.030 min  
 Response: 35132789  
 Conc: 5.31 ug/ml



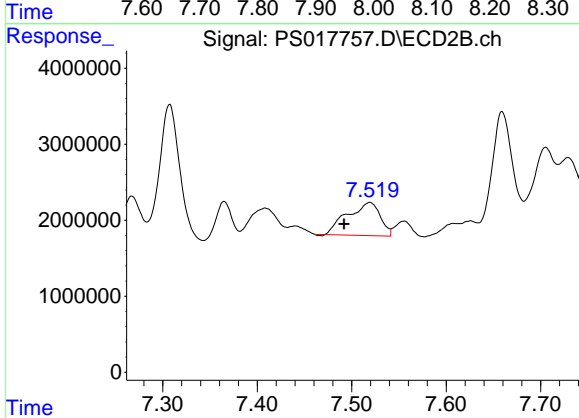
#7 MCPA  
 R.T.: 7.162 min  
 Delta R.T.: -0.021 min  
 Response: 20321251  
 Conc: 6.65 ug/ml



#8 DICHLORPROP

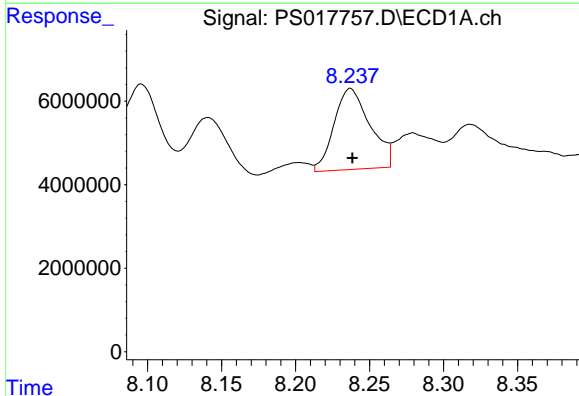
R.T.: 7.975 min  
 Delta R.T.: -0.032 min  
 Response: 97460428  
 Conc: 62.37 ng/ml

Instrument :  
 ECD\_S  
 ClientSampleId :



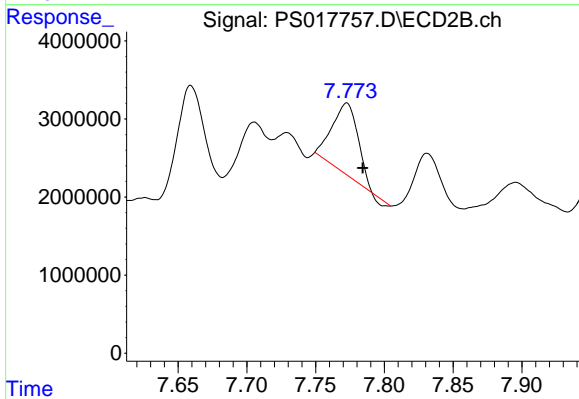
#8 DICHLORPROP

R.T.: 7.519 min  
 Delta R.T.: 0.027 min  
 Response: 10455381  
 Conc: 15.34 ng/ml



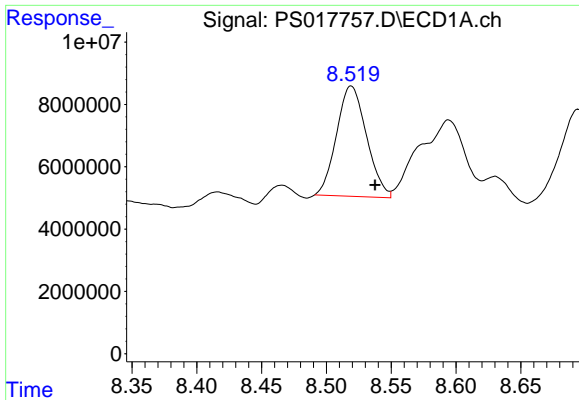
#9 2,4-D

R.T.: 8.237 min  
 Delta R.T.: -0.001 min  
 Response: 32828227  
 Conc: 18.57 ng/ml



#9 2,4-D

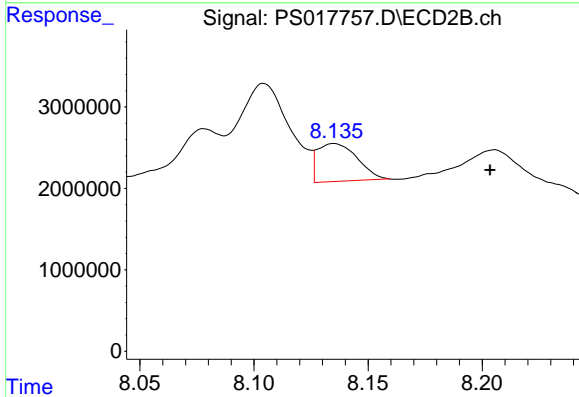
R.T.: 7.772 min  
 Delta R.T.: -0.012 min  
 Response: 11630689  
 Conc: 14.31 ng/ml



#10 Pentachlorophenol

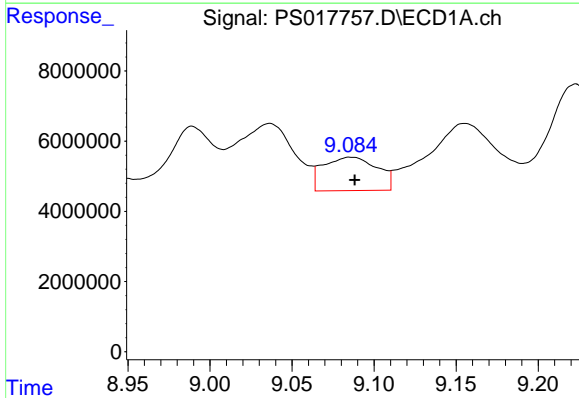
R.T.: 8.519 min  
 Delta R.T.: -0.018 min  
 Response: 56930155  
 Conc: 2.64 ng/ml

Instrument :  
 ECD\_S  
 ClientSampleId :



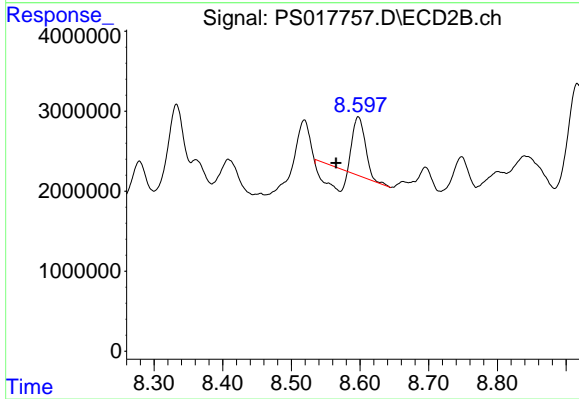
#10 Pentachlorophenol

R.T.: 8.135 min  
 Delta R.T.: -0.068 min  
 Response: 5414671  
 Conc: N.D.



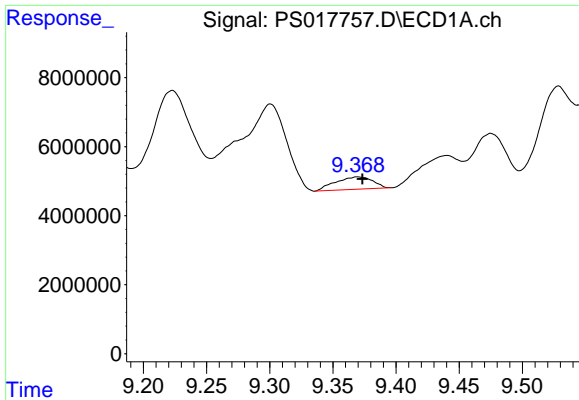
#11 2,4,5-TP (SILVEX)

R.T.: 9.086 min  
 Delta R.T.: -0.002 min  
 Response: 21739406  
 Conc: 2.56 ng/ml



#11 2,4,5-TP (SILVEX)

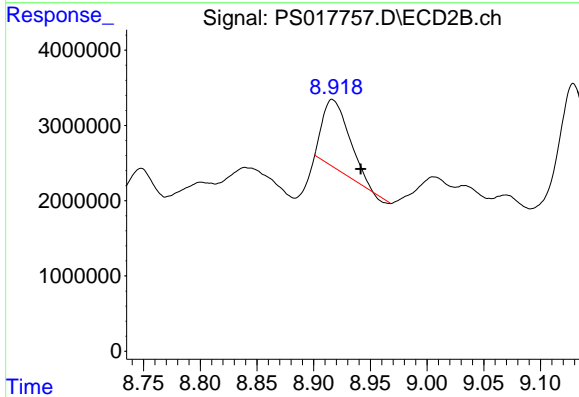
R.T.: 8.598 min  
 Delta R.T.: 0.033 min  
 Response: 5527182  
 Conc: 1.52 ng/ml



#12 2,4,5-T

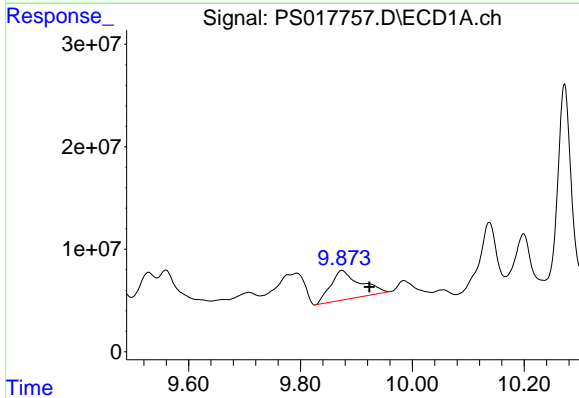
R.T.: 9.370 min  
 Delta R.T.: -0.004 min  
 Response: 7351712  
 Conc: N.D.

Instrument :  
 ECD\_S  
 ClientSampleId :



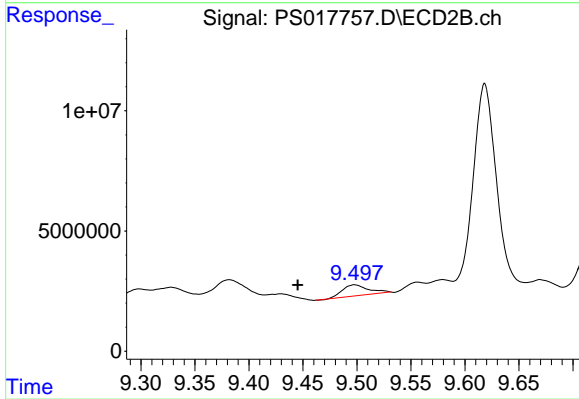
#12 2,4,5-T

R.T.: 8.917 min  
 Delta R.T.: -0.025 min  
 Response: 14659241  
 Conc: 4.29 ng/ml



#13 2,4-DB

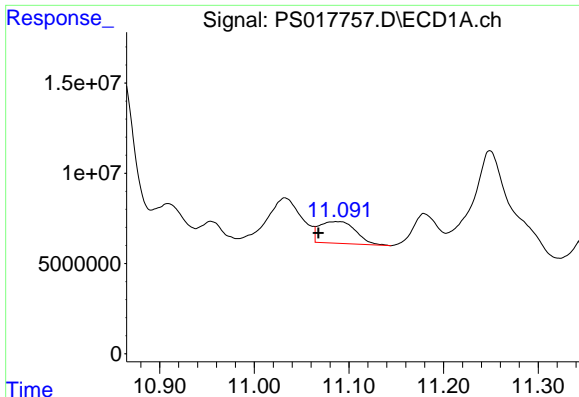
R.T.: 9.874 min  
 Delta R.T.: -0.049 min  
 Response: 104569817  
 Conc: 70.81 ng/ml



#13 2,4-DB

R.T.: 9.498 min  
 Delta R.T.: 0.052 min  
 Response: 7536063  
 Conc: 16.63 ng/ml

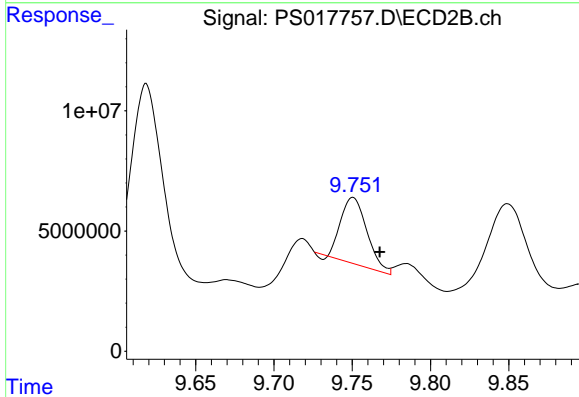




#14 DINOSEB

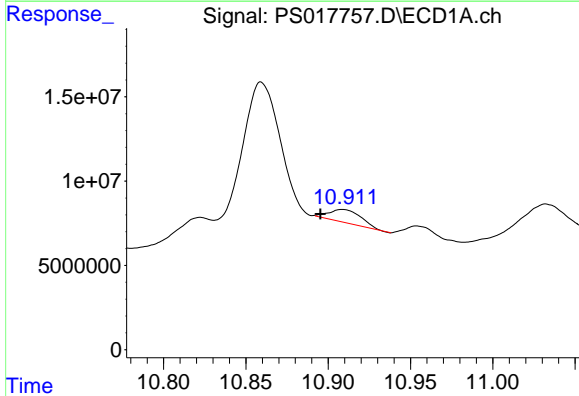
R.T.: 11.088 min  
 Delta R.T.: 0.020 min  
 Response: 32024089  
 Conc: 4.68 ng/ml

Instrument :  
 ECD\_S  
 ClientSampleId :



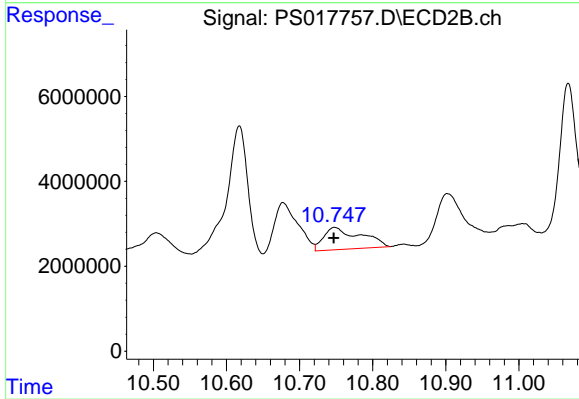
#14 DINOSEB

R.T.: 9.750 min  
 Delta R.T.: -0.017 min  
 Response: 31701514  
 Conc: 12.27 ng/ml



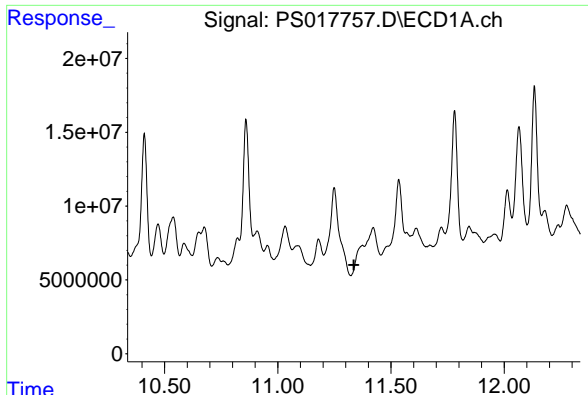
#15 Picloram

R.T.: 10.909 min  
 Delta R.T.: 0.014 min  
 Response: 10448564  
 Conc: N.D.



#15 Picloram

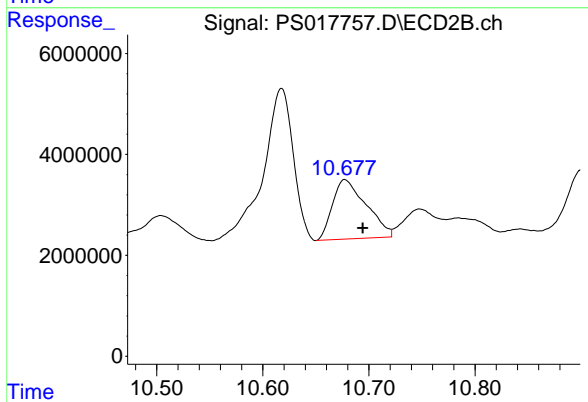
R.T.: 10.748 min  
 Delta R.T.: 0.001 min  
 Response: 18173714  
 Conc: 3.70 ng/ml



#16 DCPA

R.T.: 0.000 min  
 Exp R.T.: 11.336 min  
 Response: 0  
 Conc: N.D.

Instrument :  
 ECD\_S  
 ClientSampleId :



#16 DCPA

R.T.: 10.678 min  
 Delta R.T.: -0.016 min  
 Response: 26053789  
 Conc: 5.82 ng/ml