

Data Path : Z:\pestpcbsrv\HPCHEM1\ECD_S\Data\PS121818\
 Data File : PS002662.D
 Signal(s) : Signal #1: ECD1A.ch Signal #2: ECD2B.ch
 Acq On : 19 Dec 2018 02:01
 Operator : EI\SJ
 Sample : J6397-05
 Misc :
 ALS Vial : 18 Sample Multiplier: 1

Instrument :
 ECD_S
 ClientSampleId :
 SODUP01_121218

Integration File signal 1: autoint1.e
 Integration File signal 2: autoint2.e
 Quant Time: Dec 19 04:22:14 2018
 Quant Method : Z:\pestpcbsrv\HPCHEM1\ECD_S\Method\PS120618.M
 Quant Title : 8080.M
 QLast Update : Mon Dec 10 06:14:54 2018
 Response via : Initial Calibration
 Integrator: ChemStation

Volume Inj. : 2 µl
 Signal #1 Phase : Rtx-CLPesticides Signal #2 Phase: Rtx-CLPesticides2
 Signal #1 Info : 30M x 0.32mm x0.5 Signal #2 Info : 30M x 0.32mm x 0.25µm

Compound	RT#1	RT#2	Resp#1	Resp#2	ng/ml	ng/ml
----------	------	------	--------	--------	-------	-------

 System Monitoring Compounds

4) S	2,4-DCAA	11.394	10.893	115.0E6	115.3E6	362.296	298.229
------	----------	--------	--------	---------	---------	---------	---------

Target Compounds

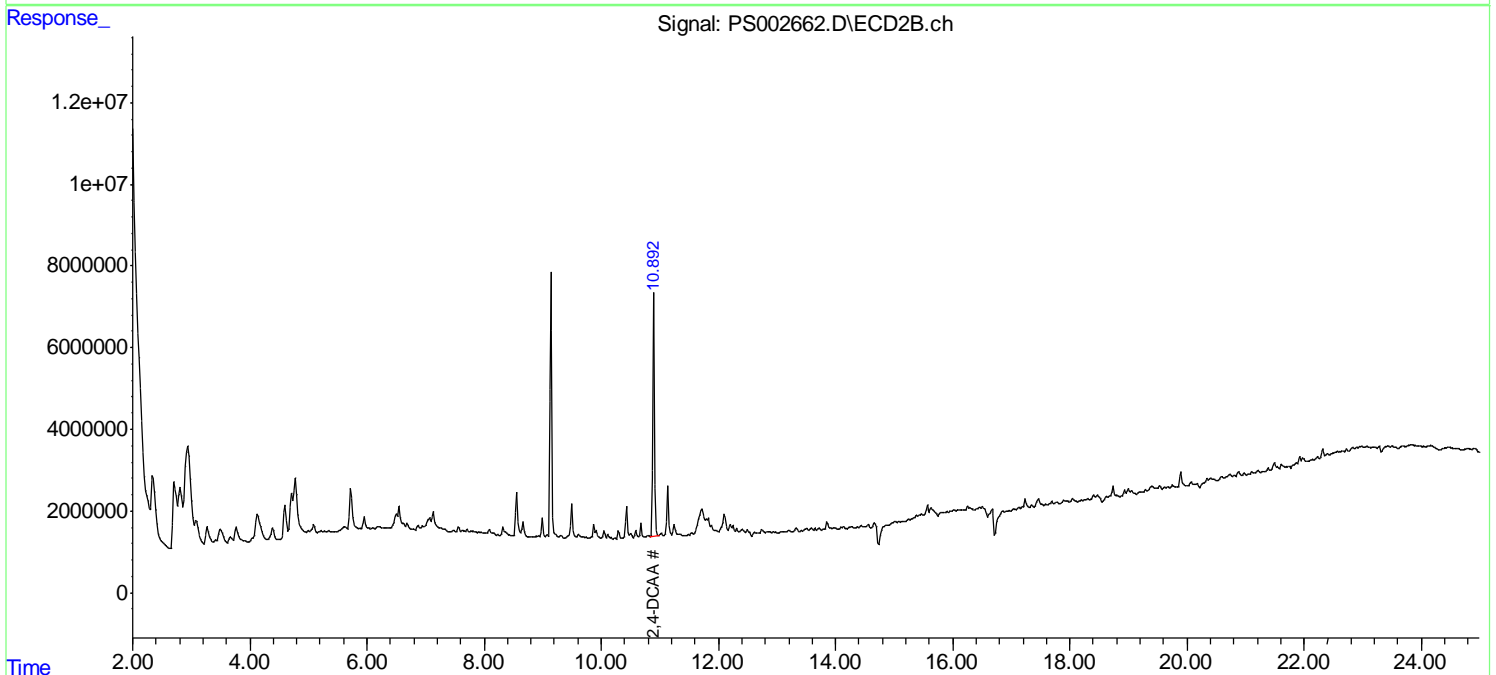
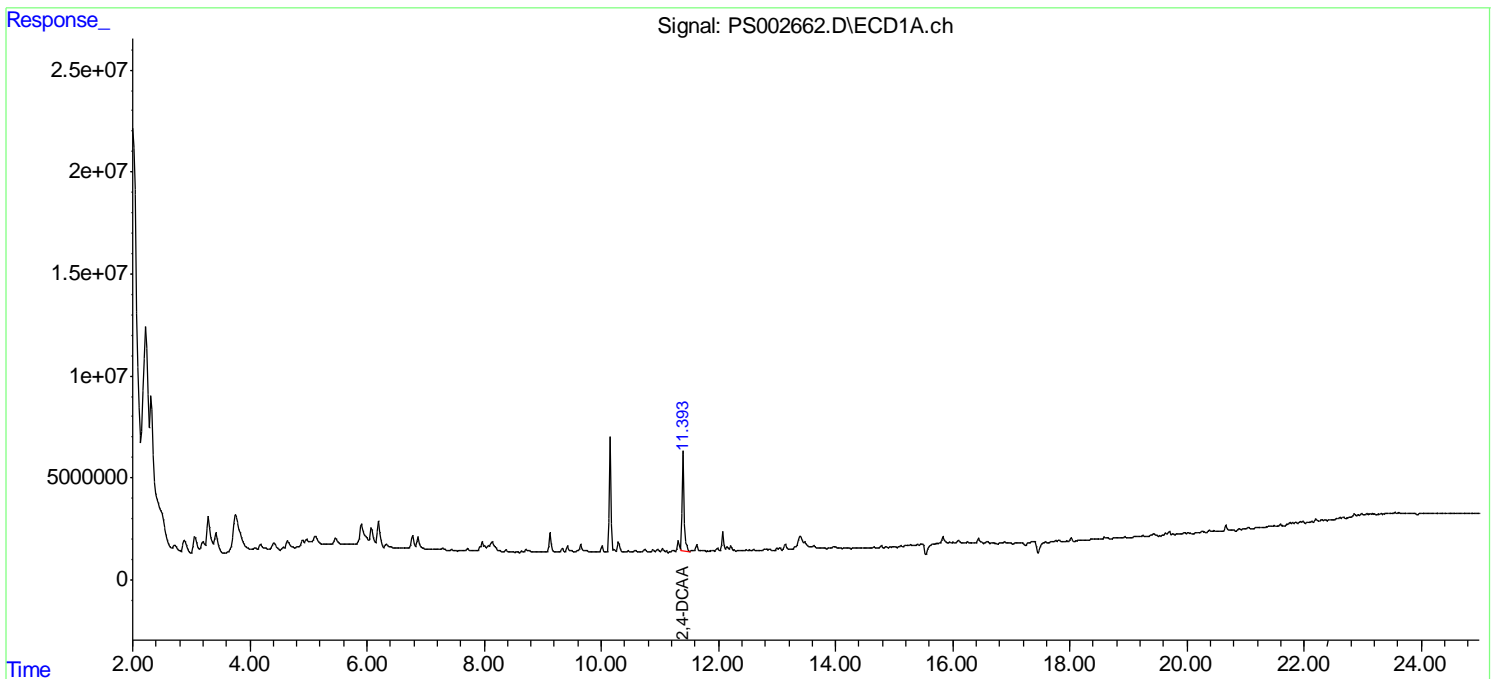
(f)=RT Delta > 1/2 Window (#)=Amounts differ by > 25% (m)=manual int.

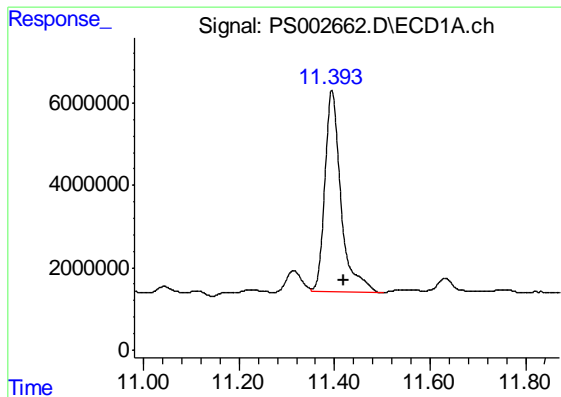
Data Path : Z:\pestpcbsrv\HPCHEM1\ECD_S\Data\PS121818\
 Data File : PS002662.D
 Signal(s) : Signal #1: ECD1A.ch Signal #2: ECD2B.ch
 Acq On : 19 Dec 2018 02:01
 Operator : EI\SJ
 Sample : J6397-05
 Misc :
 ALS Vial : 18 Sample Multiplier: 1

Instrument :
 ECD_S
 ClientSampleId :
 SODUP01_121218

Integration File signal 1: autoint1.e
 Integration File signal 2: autoint2.e
 Quant Time: Dec 19 04:22:14 2018
 Quant Method : Z:\pestpcbsrv\HPCHEM1\ECD_S\Method\PS120618.M
 Quant Title : 8080.M
 QLast Update : Mon Dec 10 06:14:54 2018
 Response via : Initial Calibration
 Integrator: ChemStation

Volume Inj. : 2 µl
 Signal #1 Phase : Rtx-CLPesticides Signal #2 Phase: Rtx-CLPesticides2
 Signal #1 Info : 30M x 0.32mm x0.5 Signal #2 Info : 30M x 0.32mm x 0.25µm

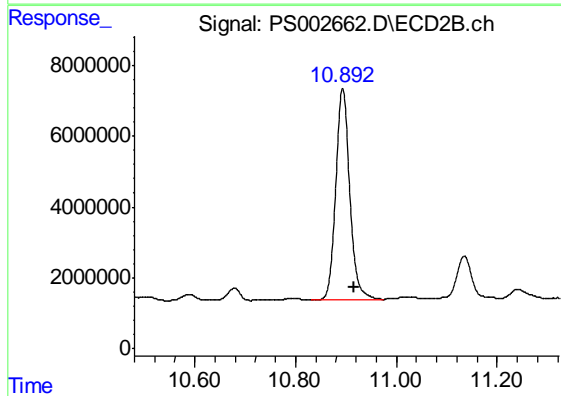




#4 2,4-DCAA

R.T.: 11.394 min
Delta R.T.: -0.026 min
Response: 115000050
Conc: 362.30 ng/ml

Instrument :
ECD_S
ClientSampleId :
SODUP01_121218



#4 2,4-DCAA

R.T.: 10.893 min
Delta R.T.: -0.022 min
Response: 115346085
Conc: 298.23 ng/ml