

Data Path : Z:\pestpcbsrv\HPCHEM1\ECD_S\Data\PS122123\
 Data File : PS025145.D
 Signal(s) : Signal #1: ECD1A.ch Signal #2: ECD2B.ch
 Acq On : 21 Dec 2023 11:17
 Operator : AR\AJ
 Sample : I.BLK
 Misc :
 ALS Vial : 2 Sample Multiplier: 1

Instrument :
 ECD_S
 ClientSampleId :
 I.BLK

Integration File signal 1: autoint1.e
 Integration File signal 2: autoint2.e
 Quant Time: Dec 21 22:31:32 2023
 Quant Method : Z:\pestpcbsrv\HPCHEM1\ECD_S\Method\PS112823.M
 Quant Title : 8080.M
 QLast Update : Tue Nov 28 16:40:06 2023
 Response via : Initial Calibration
 Integrator: ChemStation

Volume Inj. : 2 µl
 Signal #1 Phase : Rtx-CLPesticides Signal #2 Phase: Rtx-CLPesticides2
 Signal #1 Info : 30M x 0.32mm x0.5 Signal #2 Info : 30M x 0.32mm x 0.25µm

Compound	RT#1	RT#2	Resp#1	Resp#2	ng/ml	ng/ml

System Monitoring Compounds						
4) S 2,4-DCAA	6.354	6.767	1107.2E6	348.4E6	494.783	480.860
Target Compounds						
1) T Dalapon	2.508	2.565	8971172	3609787	3.111	3.147
8) T DICHLORPROP	0.000	7.561	0	1114619	N.D.	1.417
9) T 2,4-D	0.000	7.767f	0	527772	N.D.	<MDL
12) T 2,4,5-T	0.000	9.020f	0	1844591	N.D.	<MDL
15) T Picloram	9.692	10.761	20571499	6337146	1.056	<MDL #
16) T DCPA	0.000	10.761	0	6337146	N.D.	1.169

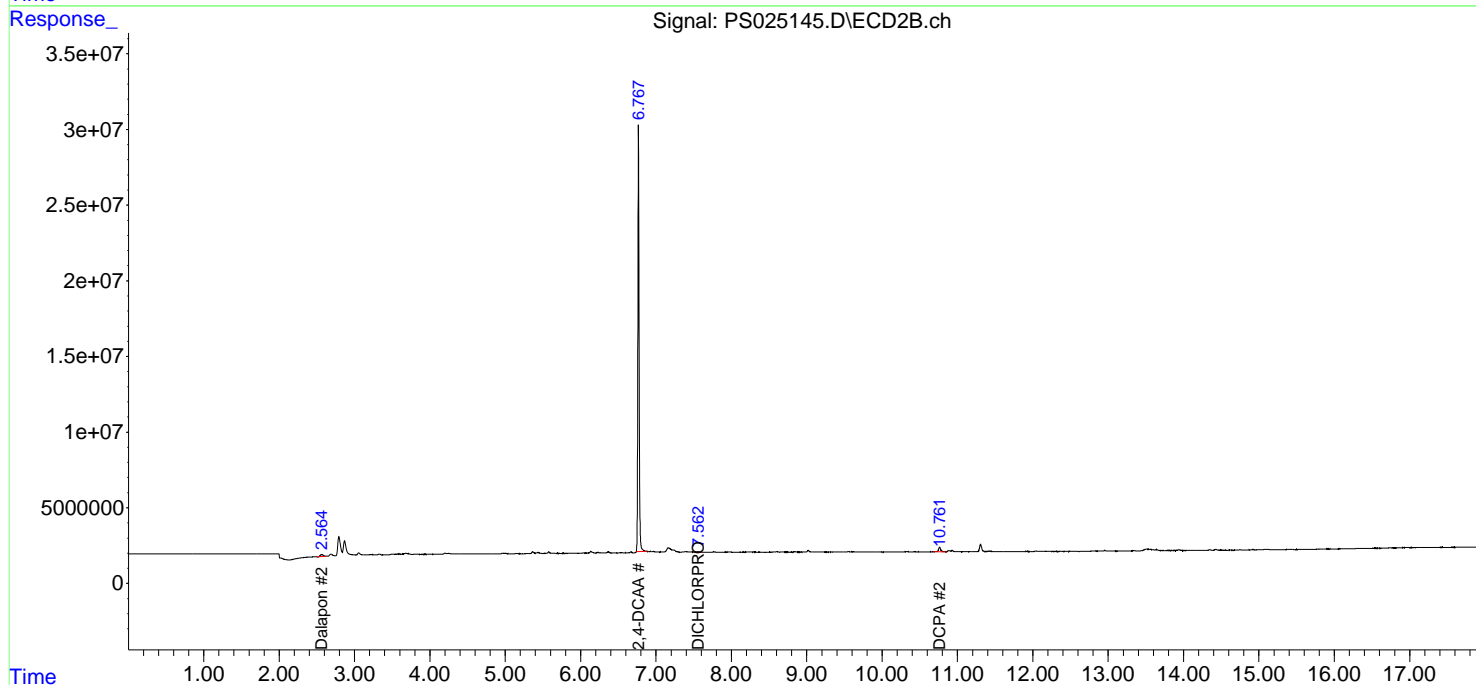
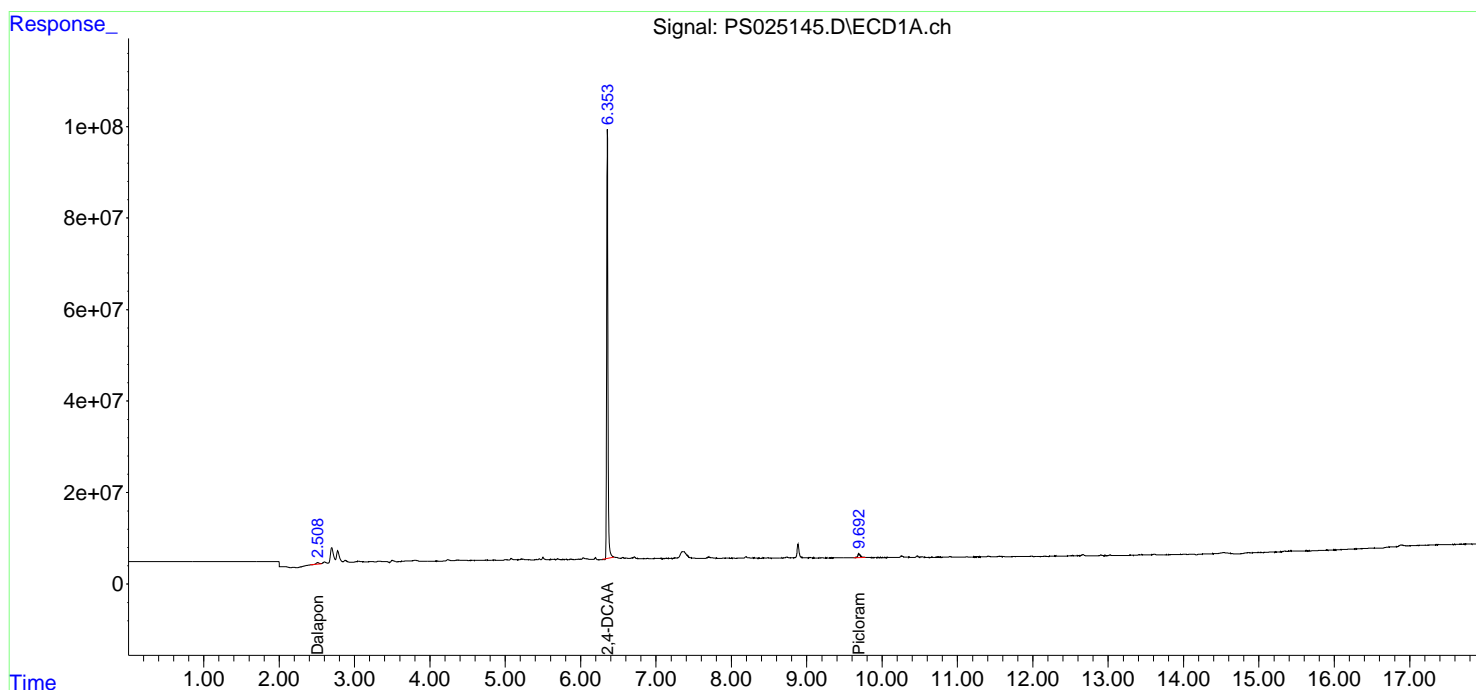
(f)=RT Delta > 1/2 Window (#)=Amounts differ by > 25% (m)=manual int.

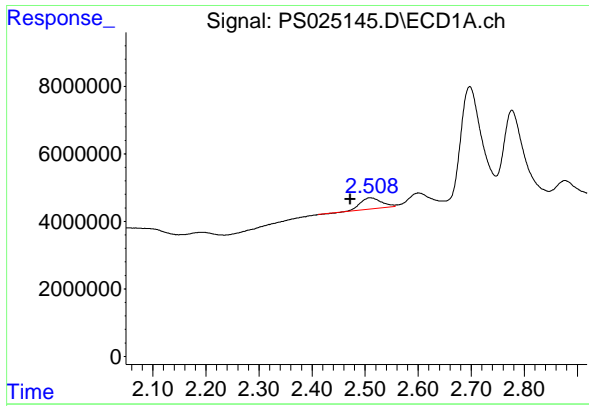
Data Path : Z:\pestpcbsrv\HPCHEM1\ECD_S\Data\PS122123\
 Data File : PS025145.D
 Signal(s) : Signal #1: ECD1A.ch Signal #2: ECD2B.ch
 Acq On : 21 Dec 2023 11:17
 Operator : AR\AJ
 Sample : I.BLK
 Misc :
 ALS Vial : 2 Sample Multiplier: 1

Instrument :
 ECD_S
 ClientSampleId :
 I.BLK

Integration File signal 1: autoint1.e
 Integration File signal 2: autoint2.e
 Quant Time: Dec 21 22:31:32 2023
 Quant Method : Z:\pestpcbsrv\HPCHEM1\ECD_S\Method\PS112823.M
 Quant Title : 8080.M
 QLast Update : Tue Nov 28 16:40:06 2023
 Response via : Initial Calibration
 Integrator: ChemStation

Volume Inj. : 2 µl
 Signal #1 Phase : Rtx-CLPesticides Signal #2 Phase: Rtx-CLPesticides2
 Signal #1 Info : 30M x 0.32mm x0.5 Signal #2 Info : 30M x 0.32mm x 0.25µm

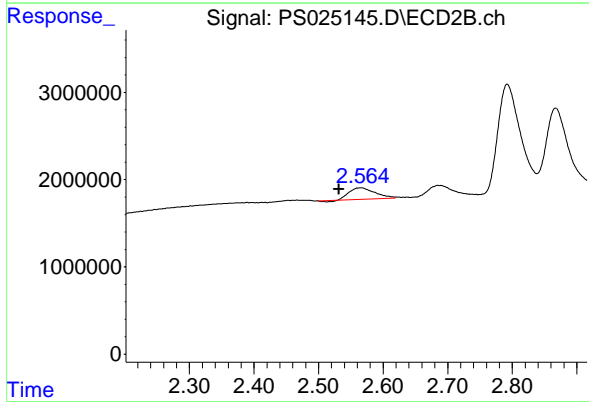




#1 Dalapon

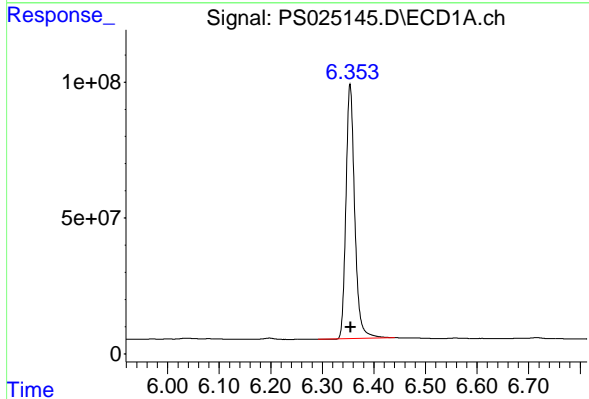
R.T.: 2.508 min
 Delta R.T.: 0.036 min
 Response: 8971172
 Conc: 3.11 ng/ml

Instrument :
 ECD_S
 ClientSampleId :
 I.BLK



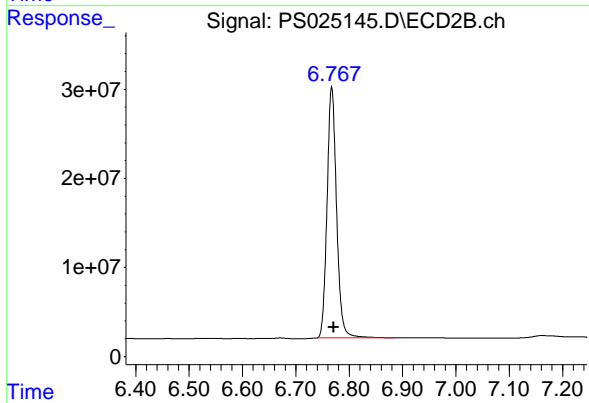
#1 Dalapon

R.T.: 2.565 min
 Delta R.T.: 0.033 min
 Response: 3609787
 Conc: 3.15 ng/ml



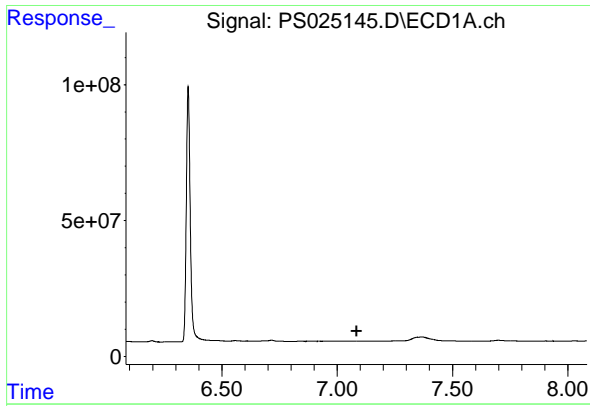
#4 2,4-DCAA

R.T.: 6.354 min
 Delta R.T.: -0.001 min
 Response: 1107247410
 Conc: 494.78 ng/ml



#4 2,4-DCAA

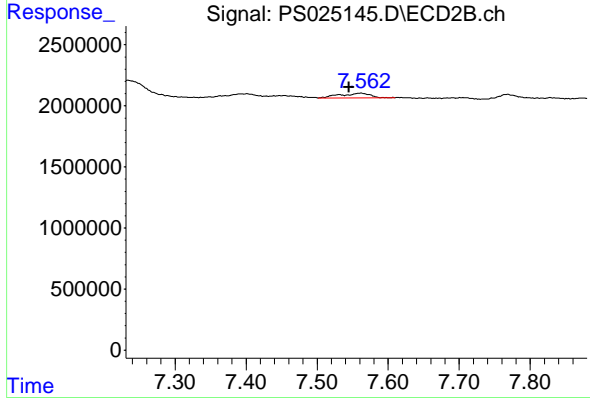
R.T.: 6.767 min
 Delta R.T.: -0.004 min
 Response: 348409232
 Conc: 480.86 ng/ml



#8 DICHLORPROP

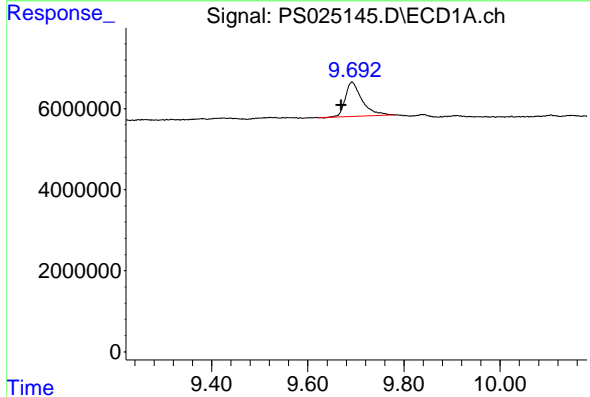
R.T.: 0.000 min
 Exp R.T.: 7.083 min
 Response: 0
 Conc: N.D.

Instrument :
 ECD_S
 ClientSampleId :
 I.BLK



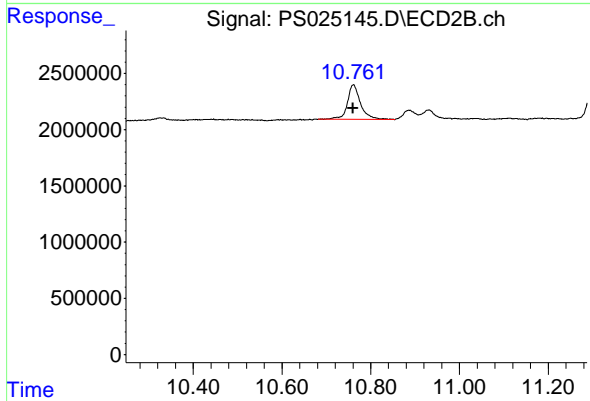
#8 DICHLORPROP

R.T.: 7.561 min
 Delta R.T.: 0.016 min
 Response: 1114619
 Conc: 1.42 ng/ml



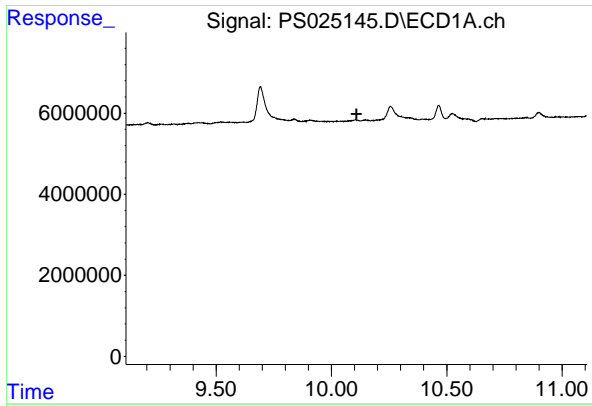
#15 Picloram

R.T.: 9.692 min
 Delta R.T.: 0.022 min
 Response: 20571499
 Conc: 1.06 ng/ml



#15 Picloram

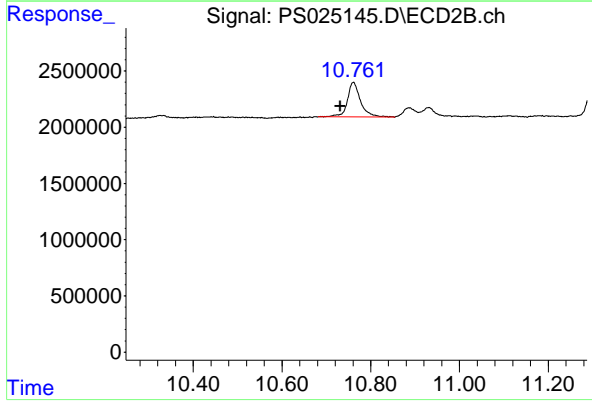
R.T.: 10.761 min
 Delta R.T.: 0.000 min
 Response: 6337146
 Conc: N.D.



#16 DCPA

R.T.: 0.000 min
Exp R.T.: 10.109 min
Response: 0
Conc: N.D.

Instrument :
ECD_S
ClientSampleId :
I.BLK



#16 DCPA

R.T.: 10.761 min
Delta R.T.: 0.029 min
Response: 6337146
Conc: 1.17 ng/ml