

Data Path : Z:\pestpcbsrv\HPCHEM1\ECD_S\Data\PS122123\
 Data File : PS025150.D
 Signal(s) : Signal #1: ECD1A.ch Signal #2: ECD2B.ch
 Acq On : 21 Dec 2023 14:15
 Operator : AR\AJ
 Sample : 05887-01MS
 Misc :
 ALS Vial : 7 Sample Multiplier: 1

Instrument :
 ECD_S
 ClientSampleId :
 WC-121423MS

Integration File signal 1: autoint1.e
 Integration File signal 2: autoint2.e
 Quant Time: Dec 21 22:32:37 2023
 Quant Method : Z:\pestpcbsrv\HPCHEM1\ECD_S\Method\PS112823.M
 Quant Title : 8080.M
 QLast Update : Tue Nov 28 16:40:06 2023
 Response via : Initial Calibration
 Integrator: ChemStation

Volume Inj. : 2 µl
 Signal #1 Phase : Rtx-CLPesticides Signal #2 Phase: Rtx-CLPesticides2
 Signal #1 Info : 30M x 0.32mm x0.5 Signal #2 Info : 30M x 0.32mm x 0.25µm

Compound	RT#1	RT#2	Resp#1	Resp#2	ng/ml	ng/ml

System Monitoring Compounds						
4) S 2,4-DCAA	6.353	6.767	1211.3E6	323.2E6	541.288	446.121
Target Compounds						
2) T 3,5-DICHL...	5.729	5.958	1255.0E6	387.1E6	371.317	340.556
3) T 4-Nitroph...	6.192	6.403	6079260	22062143	4.128	45.299 #
5) T DICAMBA	6.494	6.928	3604.9E6	1104.8E6	369.897	356.580
6) T MCPP	6.644	7.023	205.1E6	60362502	29.939	29.101
7) T MCPA	6.766	7.228	338.9E6	111.3E6	35.600	33.843
8) T DICHLORPROP	7.081	7.541	848.5E6	274.1E6	330.758	348.492
9) T 2,4-D	7.278	7.823	1180.3E6	383.7E6	388.584	393.923
10) T Pentachlo...	7.507	8.245	6923.6E6	2027.1E6	197.459	178.831
11) T 2,4,5-TP ...	8.028	8.604	4407.2E6	1219.0E6	290.119	276.421
12) T 2,4,5-T	8.284	8.973	5027.4E6	1412.3E6	348.051	327.326
13) T 2,4-DB	8.790	9.476	615.2E6	156.4E6	264.810	282.504
15) T Picloram	9.667	10.752	7055.4E6	2237.7E6	362.081	341.882
16) T DCPA	10.105	10.724	8500.6E6	2279.8E6	453.051	420.637

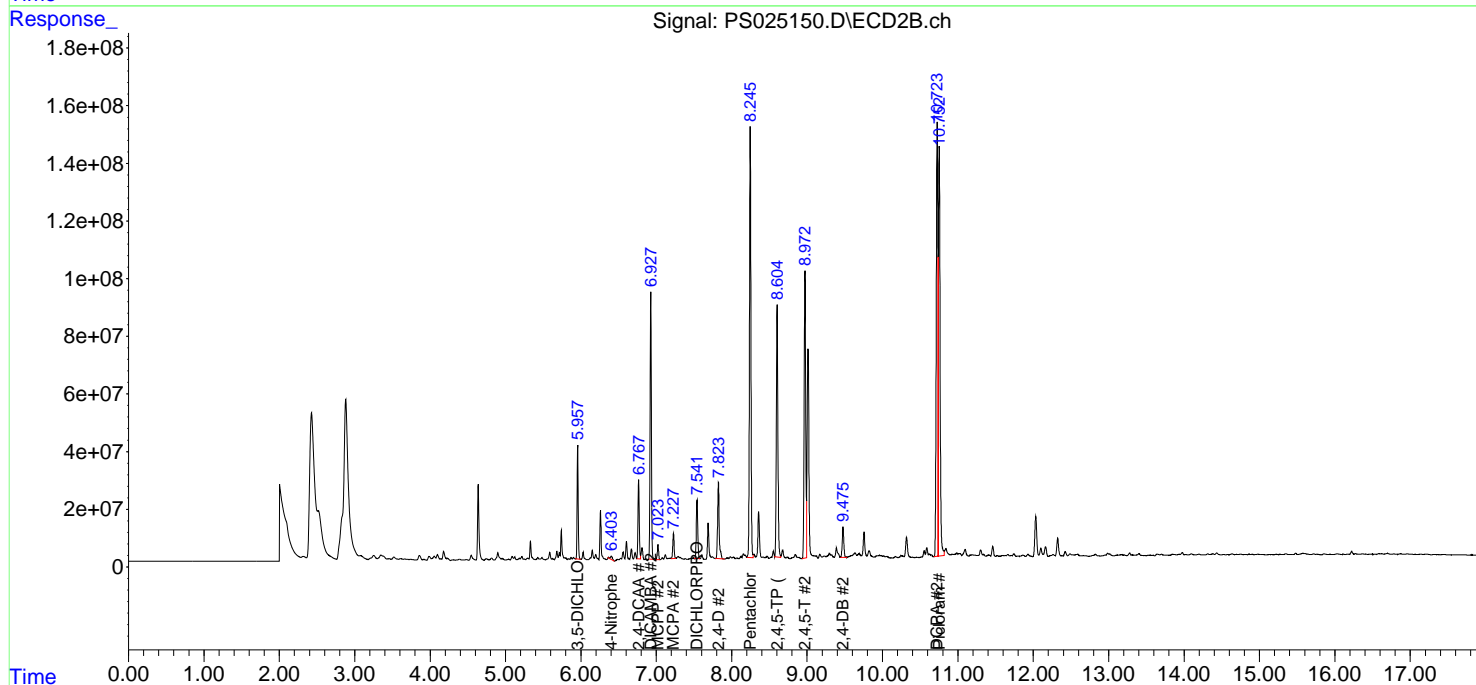
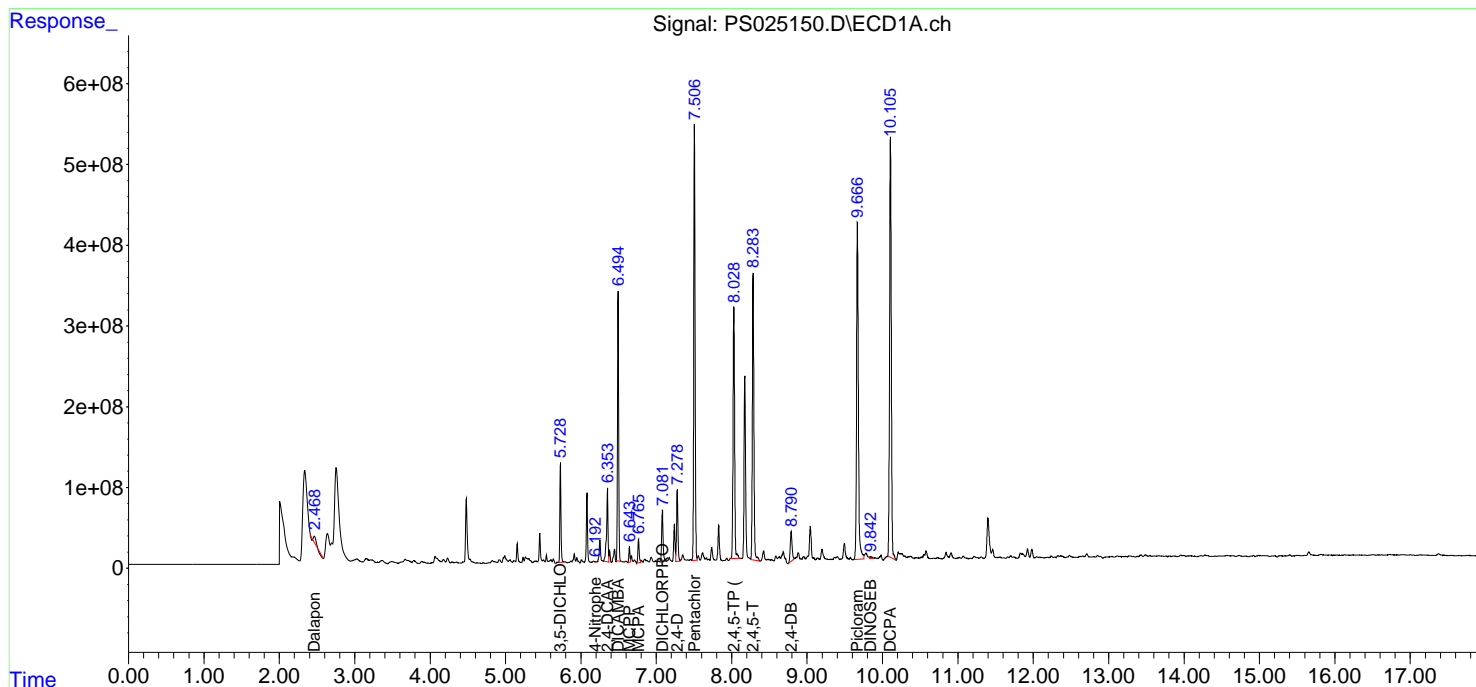
(f)=RT Delta > 1/2 Window (#)=Amounts differ by > 25% (m)=manual int.

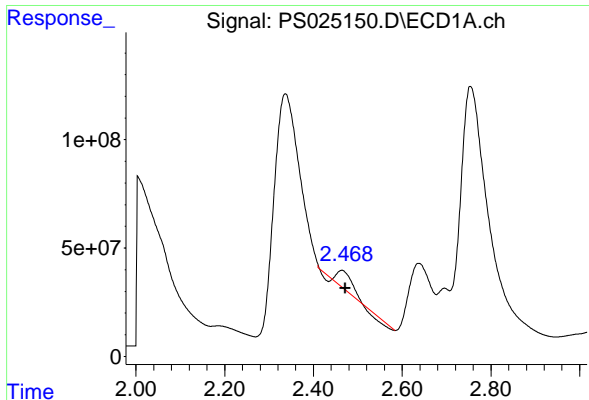
Data Path : Z:\pestpcbsrv\HPCHEM1\ECD_S\Data\PS122123\
 Data File : PS025150.D
 Signal(s) : Signal #1: ECD1A.ch Signal #2: ECD2B.ch
 Acq On : 21 Dec 2023 14:15
 Operator : AR\AJ
 Sample : 05887-01MS
 Misc :
 ALS Vial : 7 Sample Multiplier: 1

Instrument :
 ECD_S
 ClientSampleId :
 WC-121423MS

Integration File signal 1: autoint1.e
 Integration File signal 2: autoint2.e
 Quant Time: Dec 21 22:32:37 2023
 Quant Method : Z:\pestpcbsrv\HPCHEM1\ECD_S\Method\PS112823.M
 Quant Title : 8080.M
 QLast Update : Tue Nov 28 16:40:06 2023
 Response via : Initial Calibration
 Integrator: ChemStation

Volume Inj. : 2 µl
 Signal #1 Phase : Rtx-CLPesticides Signal #2 Phase: Rtx-CLPesticides2
 Signal #1 Info : 30M x 0.32mm x 0.5 Signal #2 Info : 30M x 0.32mm x 0.25µm

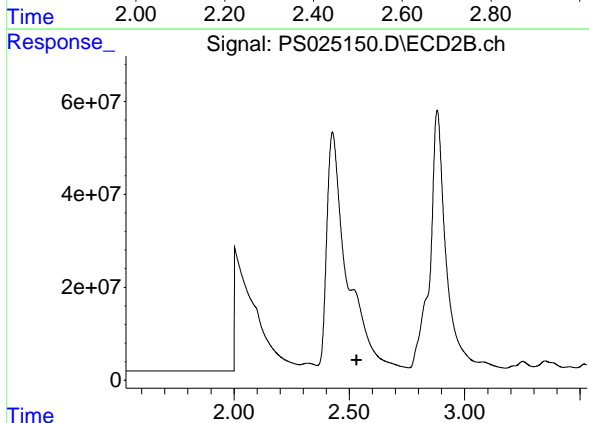




#1 Dalapon

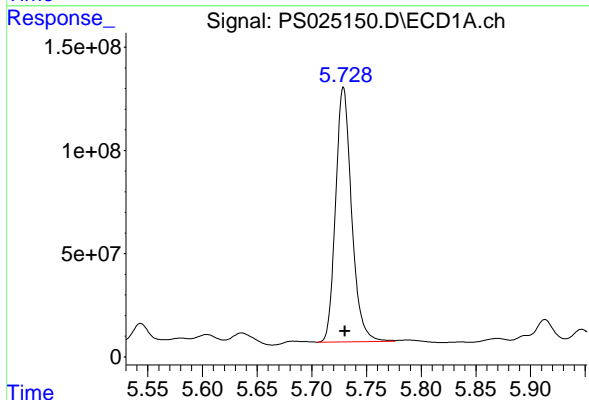
R.T.: 2.464 min
 Delta R.T.: -0.008 min
 Response: 118259369
 Conc: 41.01 ng/ml

Instrument :
 ECD_S
 ClientSampleId :
 WC-121423MS



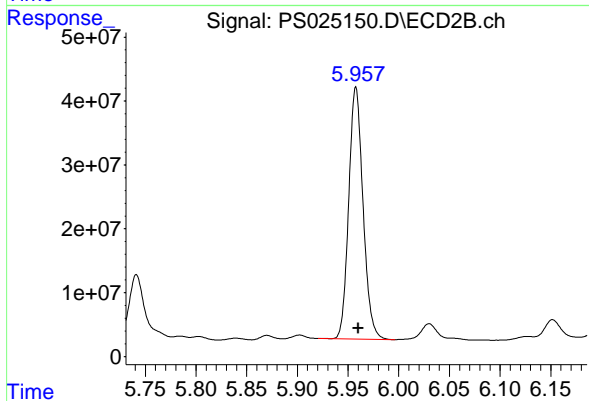
#1 Dalapon

R.T.: 2.519 min
 Delta R.T.: -0.012 min
 Response: -776788616
 Conc: N.D.



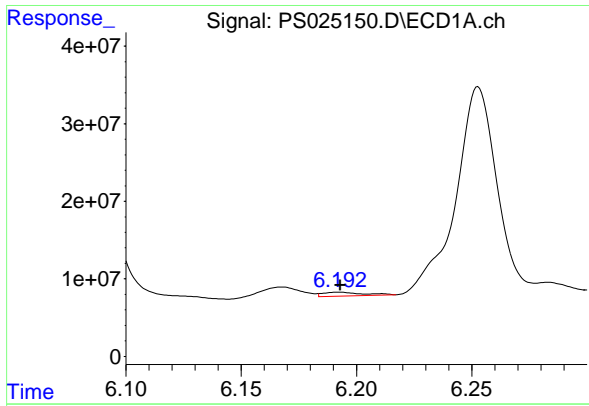
#2 3,5-DICHLOROBENZOIC ACID

R.T.: 5.729 min
 Delta R.T.: -0.001 min
 Response: 1255039251
 Conc: 371.32 ng/ml



#2 3,5-DICHLOROBENZOIC ACID

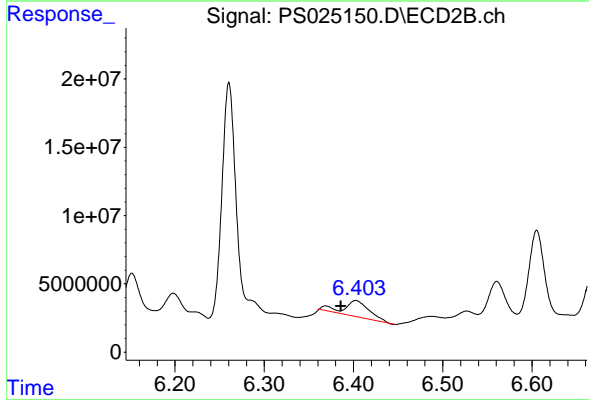
R.T.: 5.958 min
 Delta R.T.: -0.002 min
 Response: 387132393
 Conc: 340.56 ng/ml



#3 4-Nitrophenol

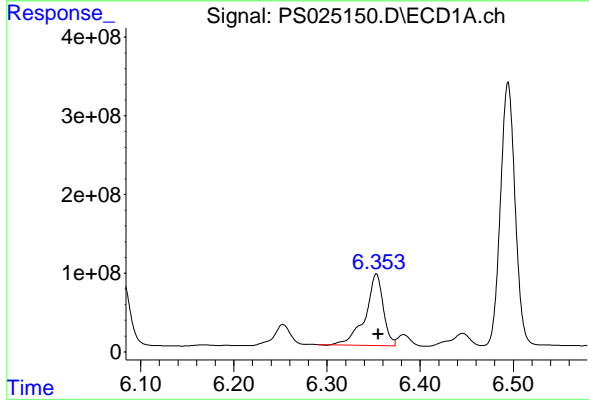
R.T.: 6.192 min
 Delta R.T.: 0.000 min
 Response: 6079260
 Conc: 4.13 ng/ml

Instrument :
 ECD_S
 ClientSampleId :
 WC-121423MS



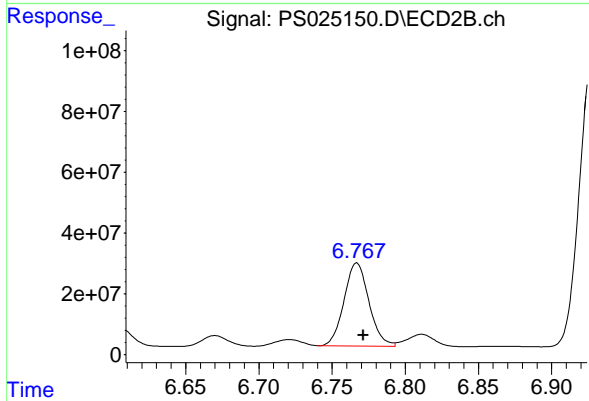
#3 4-Nitrophenol

R.T.: 6.403 min
 Delta R.T.: 0.016 min
 Response: 22062143
 Conc: 45.30 ng/ml



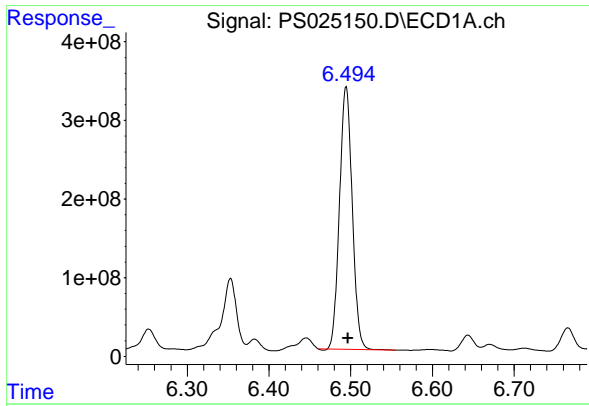
#4 2,4-DCAA

R.T.: 6.353 min
 Delta R.T.: -0.002 min
 Response: 1211319181
 Conc: 541.29 ng/ml



#4 2,4-DCAA

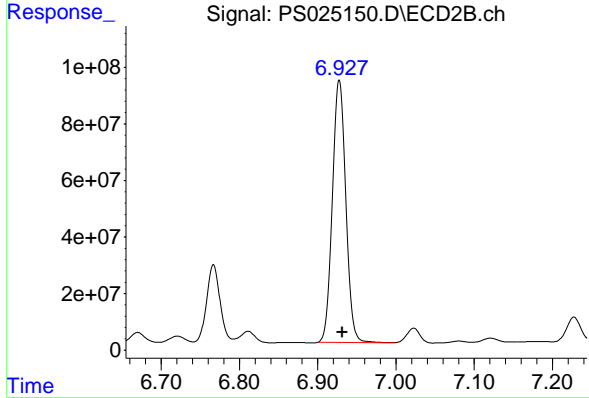
R.T.: 6.767 min
 Delta R.T.: -0.004 min
 Response: 323238677
 Conc: 446.12 ng/ml



#5 DICAMBA

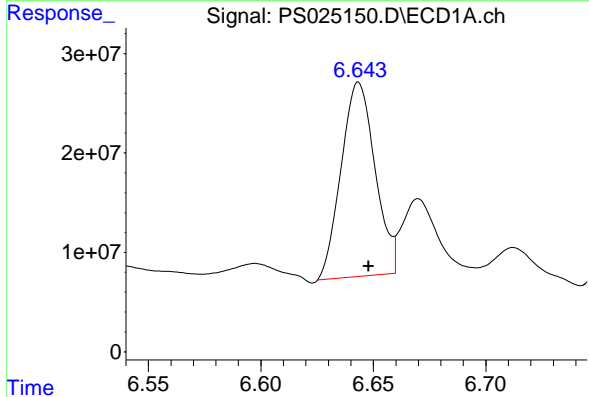
R.T.: 6.494 min
 Delta R.T.: -0.002 min
 Response: 3604863873
 Conc: 369.90 ng/ml

Instrument : ECD_S
 ClientSampleId : WC-121423MS



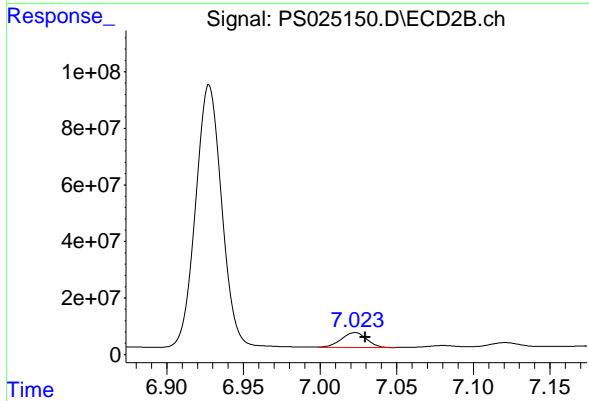
#5 DICAMBA

R.T.: 6.928 min
 Delta R.T.: -0.004 min
 Response: 1104789358
 Conc: 356.58 ng/ml



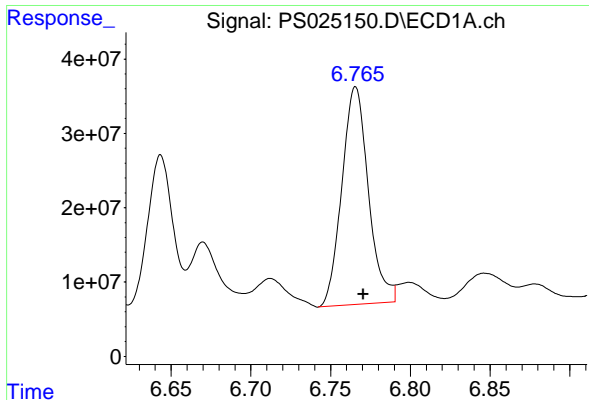
#6 MCPP

R.T.: 6.644 min
 Delta R.T.: -0.004 min
 Response: 205055378
 Conc: 29.94 ug/ml



#6 MCPP

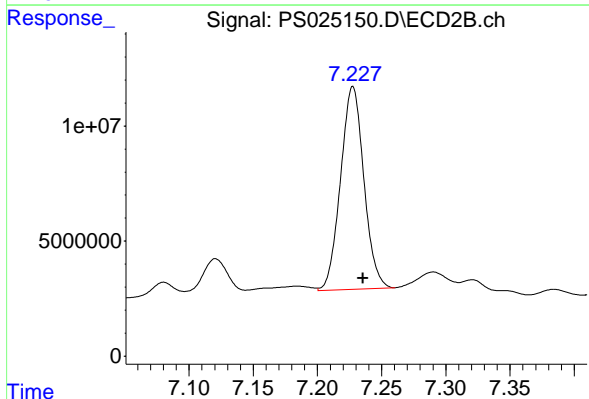
R.T.: 7.023 min
 Delta R.T.: -0.007 min
 Response: 60362502
 Conc: 29.10 ug/ml



#7 MCPA

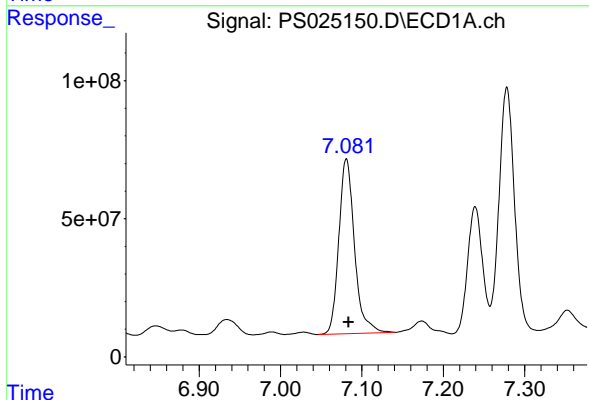
R.T.: 6.766 min
Delta R.T.: -0.005 min
Response: 338908607
Conc: 35.60 ug/ml

Instrument :
ECD_S
ClientSampleId :
WC-121423MS



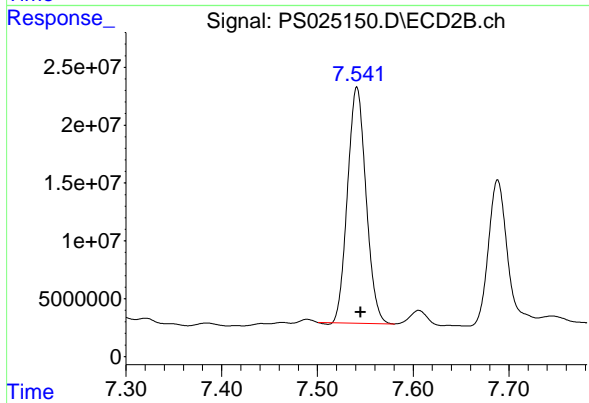
#7 MCPA

R.T.: 7.228 min
Delta R.T.: -0.008 min
Response: 111319130
Conc: 33.84 ug/ml



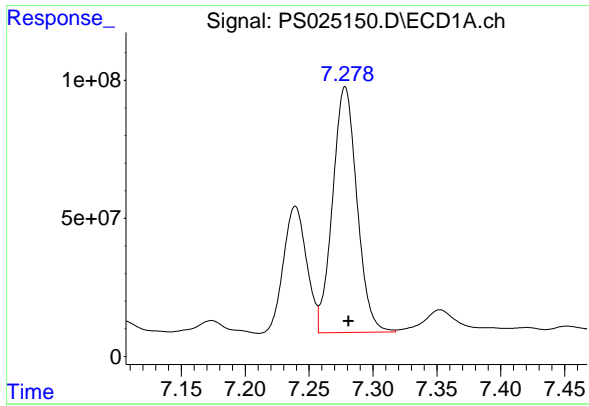
#8 DICHLORPROP

R.T.: 7.081 min
Delta R.T.: -0.002 min
Response: 848492071
Conc: 330.76 ng/ml



#8 DICHLORPROP

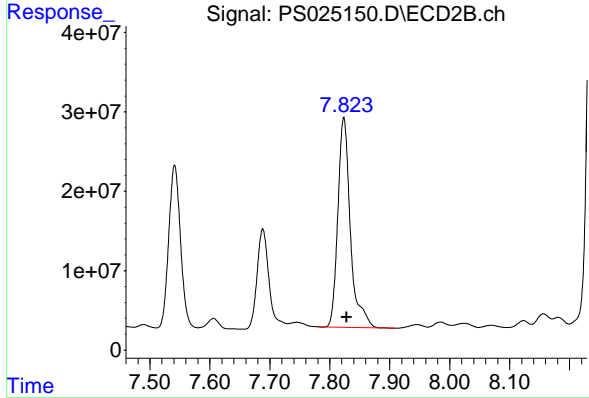
R.T.: 7.541 min
Delta R.T.: -0.004 min
Response: 274143433
Conc: 348.49 ng/ml



#9 2,4-D

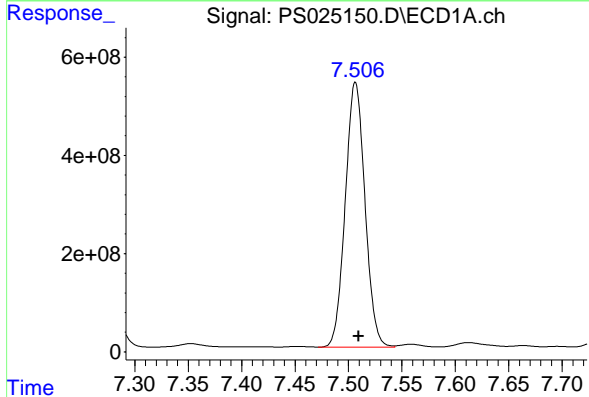
R.T.: 7.278 min
 Delta R.T.: -0.003 min
 Response: 1180260756
 Conc: 388.58 ng/ml

Instrument :
 ECD_S
 ClientSampleId :
 WC-121423MS



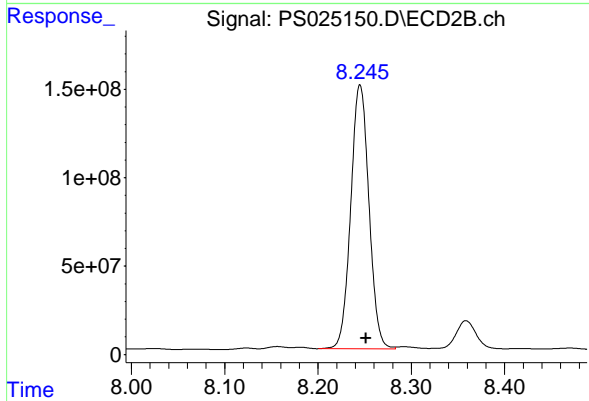
#9 2,4-D

R.T.: 7.823 min
 Delta R.T.: -0.004 min
 Response: 383700923
 Conc: 393.92 ng/ml



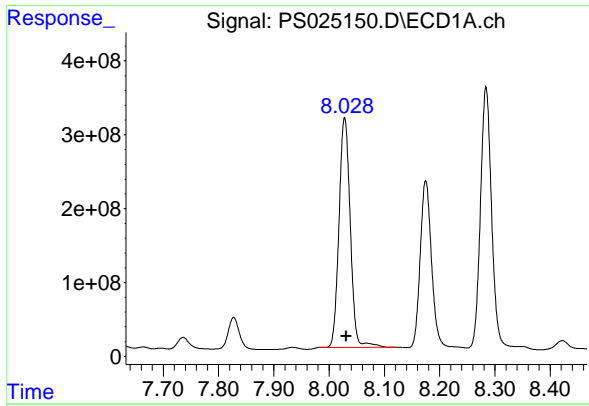
#10 Pentachlorophenol

R.T.: 7.507 min
 Delta R.T.: -0.003 min
 Response: 6923607719
 Conc: 197.46 ng/ml



#10 Pentachlorophenol

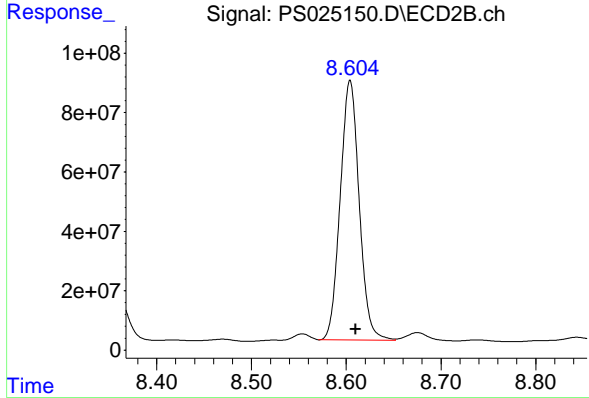
R.T.: 8.245 min
 Delta R.T.: -0.006 min
 Response: 2027143793
 Conc: 178.83 ng/ml



#11 2,4,5-TP (SILVEX)

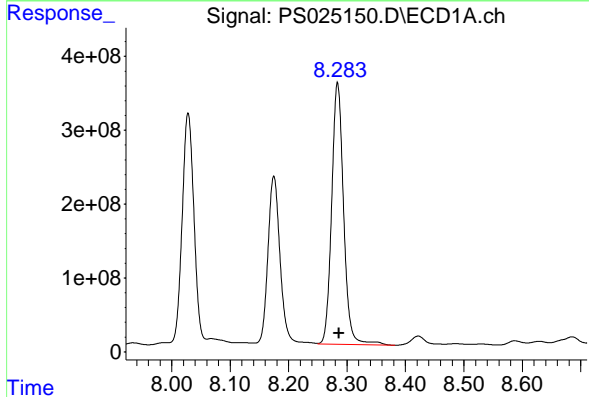
R.T.: 8.028 min
 Delta R.T.: -0.003 min
 Response: 4407228958
 Conc: 290.12 ng/ml

Instrument :
 ECD_S
 ClientSampleId :
 WC-121423MS



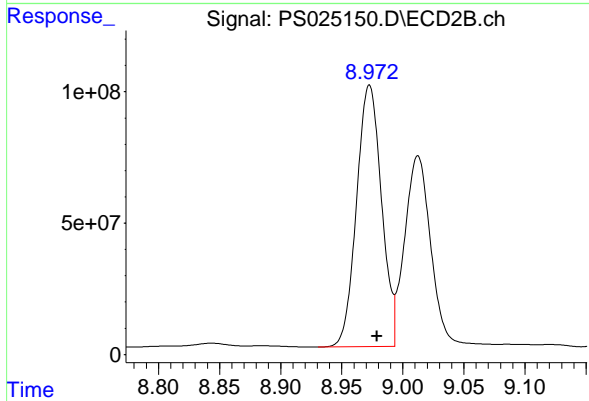
#11 2,4,5-TP (SILVEX)

R.T.: 8.604 min
 Delta R.T.: -0.006 min
 Response: 1219044186
 Conc: 276.42 ng/ml



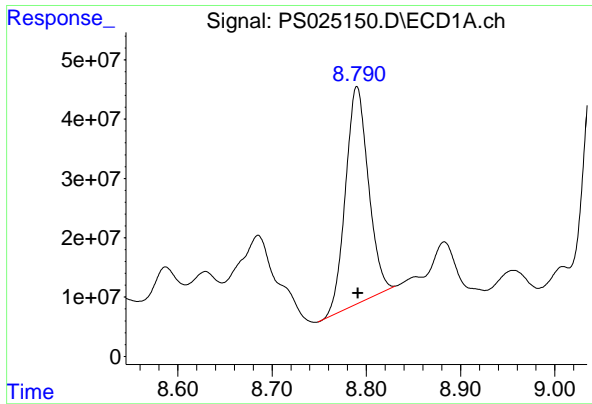
#12 2,4,5-T

R.T.: 8.284 min
 Delta R.T.: -0.002 min
 Response: 5027382916
 Conc: 348.05 ng/ml



#12 2,4,5-T

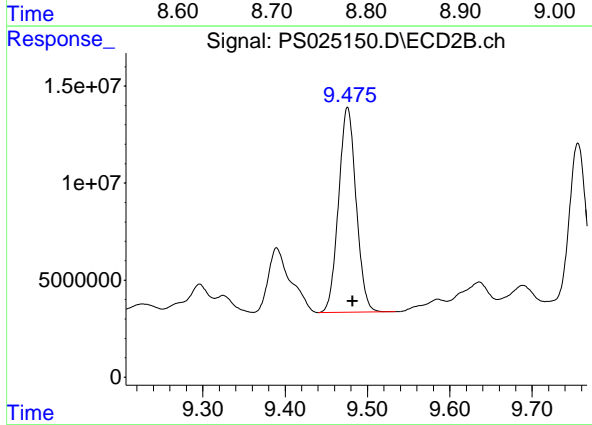
R.T.: 8.973 min
 Delta R.T.: -0.006 min
 Response: 1412271640
 Conc: 327.33 ng/ml



#13 2,4-DB

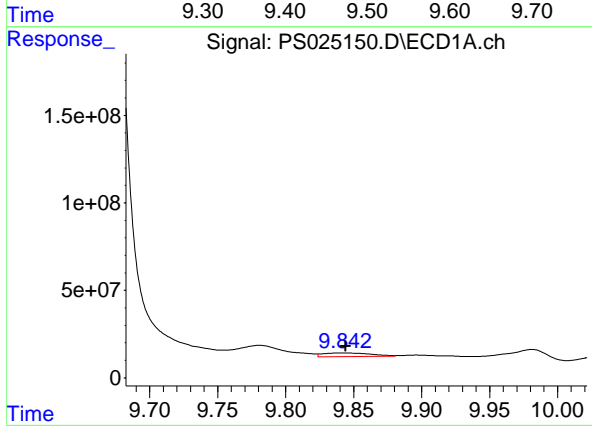
R.T.: 8.790 min
 Delta R.T.: -0.001 min
 Response: 615232510
 Conc: 264.81 ng/ml

Instrument :
 ECD_S
 ClientSampleId :
 WC-121423MS



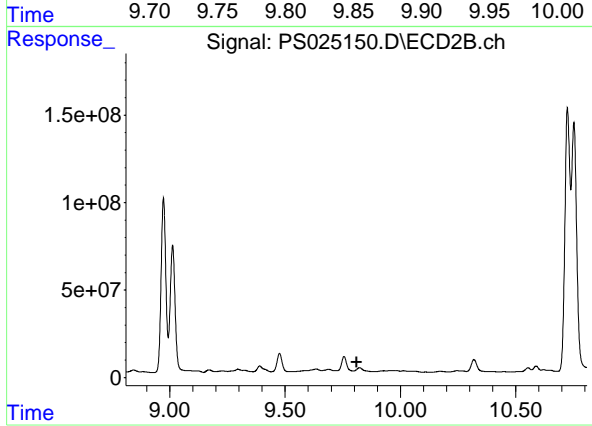
#13 2,4-DB

R.T.: 9.476 min
 Delta R.T.: -0.006 min
 Response: 156356880
 Conc: 282.50 ng/ml



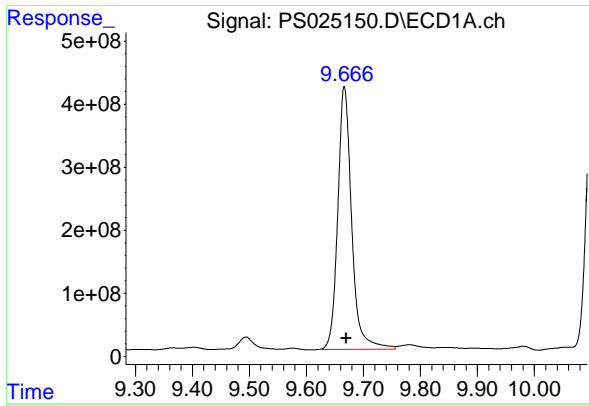
#14 DINOSEB

R.T.: 9.842 min
 Delta R.T.: -0.002 min
 Response: 51967847
 Conc: 4.79 ng/ml



#14 DINOSEB

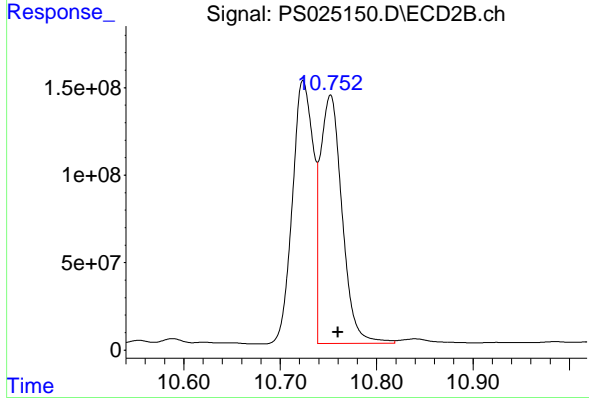
R.T.: 9.823 min
 Delta R.T.: 0.013 min
 Response: -37214716
 Conc: N.D.



#15 Picloram

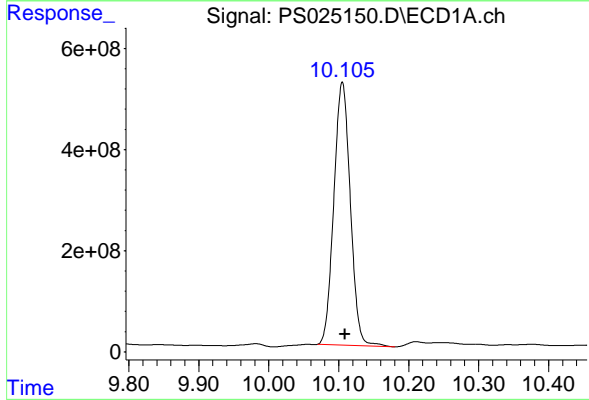
R.T.: 9.667 min
 Delta R.T.: -0.003 min
 Response: 7055444070
 Conc: 362.08 ng/ml

Instrument :
 ECD_S
 ClientSampleId :
 WC-121423MS



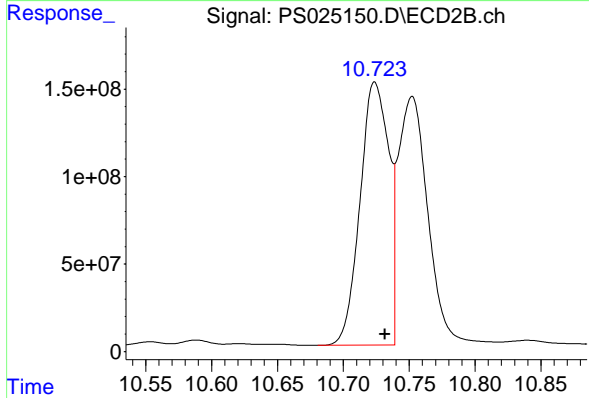
#15 Picloram

R.T.: 10.752 min
 Delta R.T.: -0.008 min
 Response: 2237709993
 Conc: 341.88 ng/ml



#16 DCPA

R.T.: 10.105 min
 Delta R.T.: -0.004 min
 Response: 8500590850
 Conc: 453.05 ng/ml



#16 DCPA

R.T.: 10.724 min
 Delta R.T.: -0.007 min
 Response: 2279825927
 Conc: 420.64 ng/ml