

Data Path : Z:\pestpcbsrv\HPCHEM1\ECD_S\Data\PS122321\
 Data File : PS017816.D
 Signal(s) : Signal #1: ECD1A.ch Signal #2: ECD2B.ch
 Acq On : 23 Dec 2021 20:51
 Operator : AJ\MA
 Sample : M5191-03
 Misc :
 ALS Vial : 13 Sample Multiplier: 1

Instrument :
 ECD_S
ClientSampleId :
 TP-(3.5-7.0)-12-21-2021

Manual Integrations
APPROVED

Reviewed By :Ankita Jodhani 12/27/2021
 Supervised By :mohammad ahmed 12/28/2021

Integration File signal 1: autoint1.e
 Integration File signal 2: autoint2.e
 Quant Time: Dec 24 00:09:36 2021
 Quant Method : Z:\pestpcbsrv\HPCHEM1\ECD_S\Method\PS121421.M
 Quant Title : 8080.M
 QLast Update : Tue Dec 14 13:29:21 2021
 Response via : Initial Calibration
 Integrator: ChemStation

Volume Inj. : 2 µl
 Signal #1 Phase : Rtx-CLPesticides Signal #2 Phase: Rtx-CLPesticides2
 Signal #1 Info : 30M x 0.32mm x0.5 Signal #2 Info : 30M x 0.32mm x 0.25µm

Compound	RT#1	RT#2	Resp#1	Resp#2	ng/ml	ng/ml

System Monitoring Compounds						
4) S 2,4-DCAA	7.123	6.712	708.4E6	306.2E6	453.276m	513.695m

Target Compounds

(f)=RT Delta > 1/2 Window (#)=Amounts differ by > 25% (m)=manual int.

Data Path : Z:\pestpcbsrv\HPCHEM1\ECD_S\Data\PS122321\
 Data File : PS017816.D
 Signal(s) : Signal #1: ECD1A.ch Signal #2: ECD2B.ch
 Acq On : 23 Dec 2021 20:51
 Operator : AJ\MA
 Sample : M5191-03
 Misc :
 ALS Vial : 13 Sample Multiplier: 1

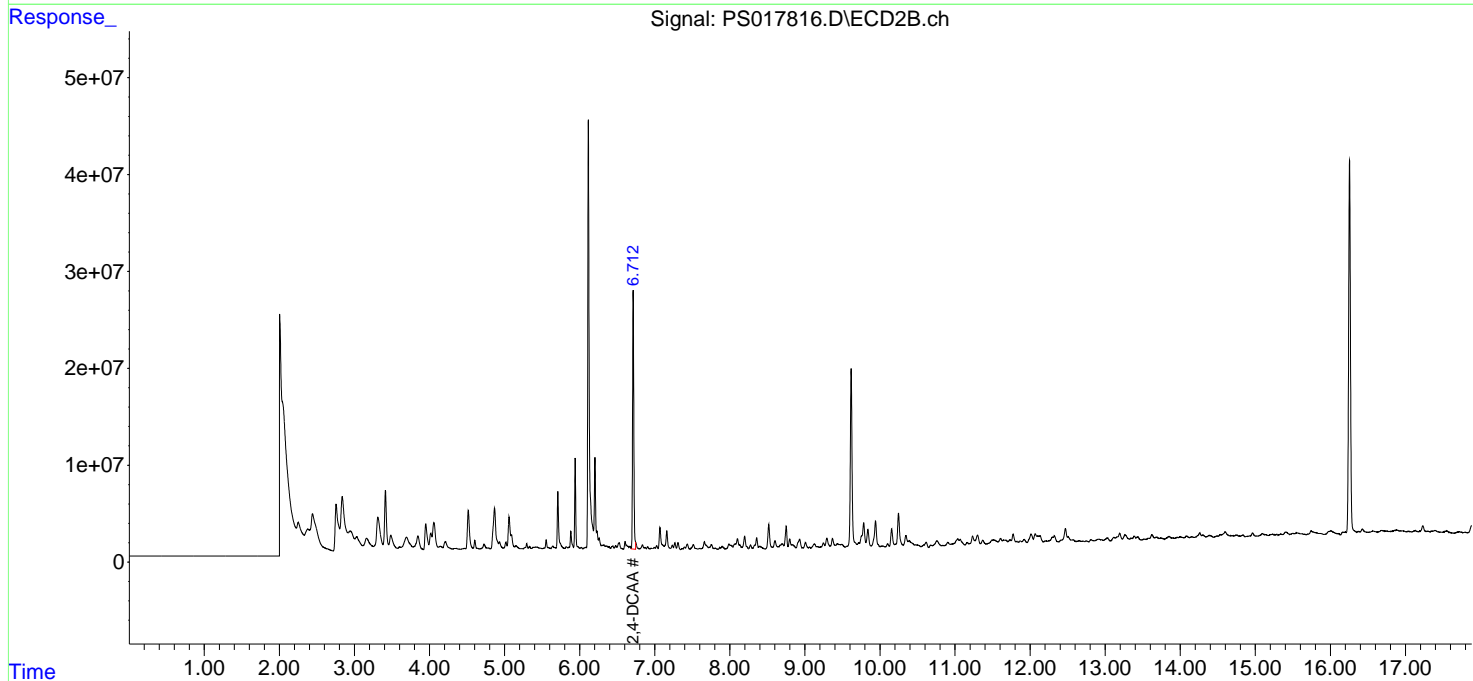
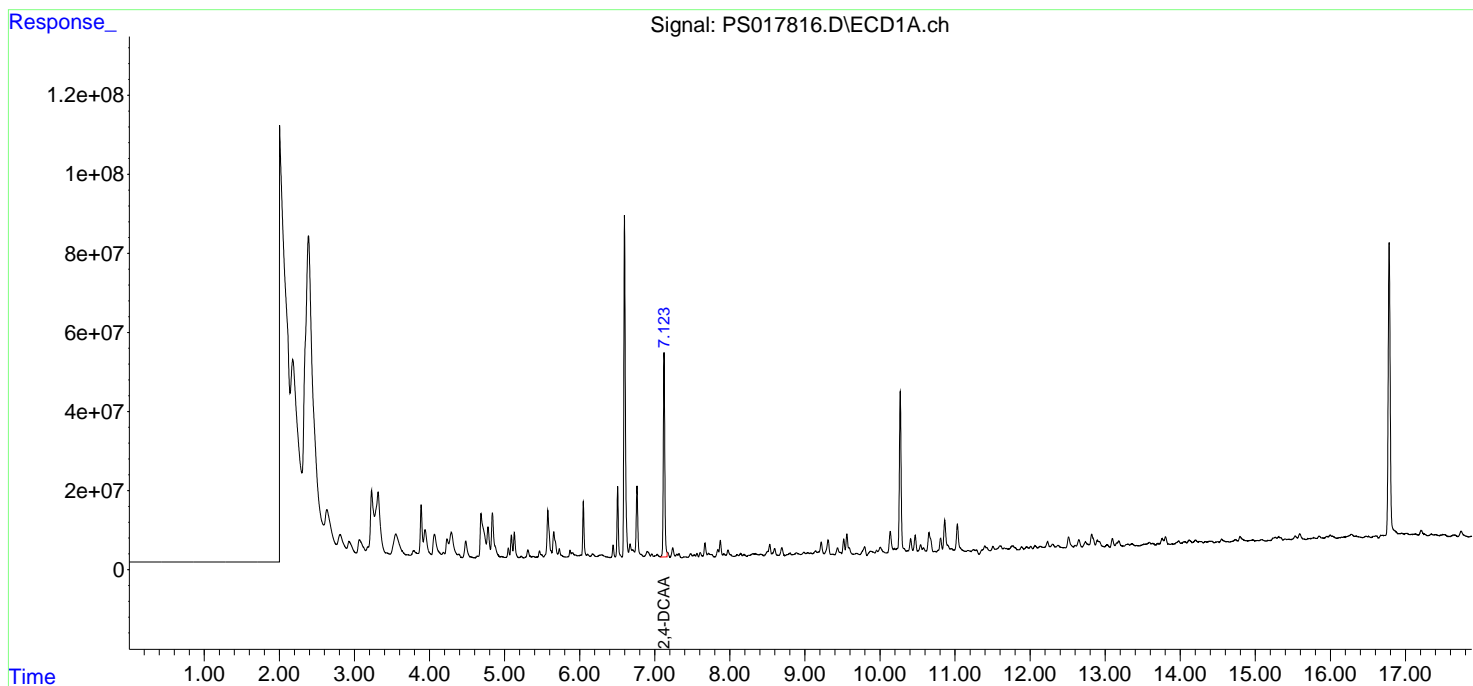
Instrument :
 ECD_S
ClientSampleId :
 TP-(3.5-7.0)-12-21-2021

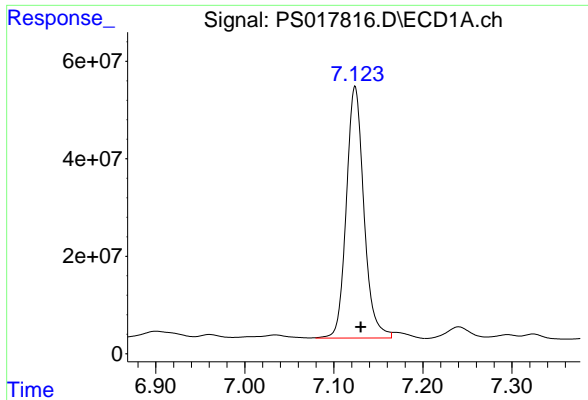
Manual Integrations
APPROVED

Reviewed By :Ankita Jodhani 12/27/2021
 Supervised By :mohammad ahmed 12/28/2021

Integration File signal 1: autoint1.e
 Integration File signal 2: autoint2.e
 Quant Time: Dec 24 00:09:36 2021
 Quant Method : Z:\pestpcbsrv\HPCHEM1\ECD_S\Method\PS121421.M
 Quant Title : 8080.M
 QLast Update : Tue Dec 14 13:29:21 2021
 Response via : Initial Calibration
 Integrator: ChemStation

Volume Inj. : 2 µl
 Signal #1 Phase : Rtx-CLPesticides Signal #2 Phase: Rtx-CLPesticides2
 Signal #1 Info : 30M x 0.32mm x0.5 Signal #2 Info : 30M x 0.32mm x 0.25µm





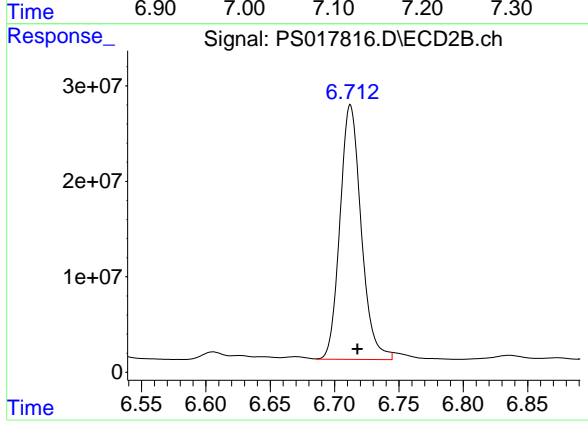
#4 2,4-DCAA

R.T.: 7.123 min
Delta R.T.: -0.007 min
Response: 708446300
Conc: 453.28 ng/ml

Instrument :
ECD_S
ClientSampleId :
TP-(3.5-7.0)-12-21-2021

Manual Integrations
APPROVED

Reviewed By :Ankita Jodhani 12/27/2021
Supervised By :mohammad ahmed 12/28/2021



#4 2,4-DCAA

R.T.: 6.712 min
Delta R.T.: -0.006 min
Response: 306214600
Conc: 513.70 ng/ml m