

Data Path : Z:\pestpcbsrv\HPCHEM1\ECD_S\Data\PS122322\
 Data File : PS021538.D
 Signal(s) : Signal #1: ECD1A.ch Signal #2: ECD2B.ch
 Acq On : 23 Dec 2022 08:49
 Operator : AR\AJ
 Sample : I.BLK
 Misc :
 ALS Vial : 2 Sample Multiplier: 1

Instrument :
 ECD_S
 ClientSampleId :

Integration File signal 1: autoint1.e
 Integration File signal 2: autoint2.e
 Quant Time: Dec 24 01:14:58 2022
 Quant Method : Z:\pestpcbsrv\HPCHEM1\ECD_S\Method\PS120722.M
 Quant Title : 8080.M
 QLast Update : Wed Dec 07 15:59:29 2022
 Response via : Initial Calibration
 Integrator: ChemStation

Volume Inj. : 2 µl
 Signal #1 Phase : Rtx-CLPesticides Signal #2 Phase: Rtx-CLPesticides2
 Signal #1 Info : 30M x 0.32mm x0.5 Signal #2 Info : 30M x 0.32mm x 0.25µm

Compound	RT#1	RT#2	Resp#1	Resp#2	ng/ml	ng/ml

System Monitoring Compounds						
4) S 2,4-DCAA	6.377	6.809	1488.6E6	1052.1E6	512.336	610.256
Target Compounds						
1) T Dalapon	2.430f	0.000	164003	0	<MDL	N.D. #
2) T 3,5-DICHL...	5.724	0.000	5951953	0	1.498	N.D. #
3) T 4-Nitroph...	6.221	0.000	6890038	0	3.832	N.D. #
6) T MCPP	0.000	7.117f	0	600157	N.D.	<MDL
7) T MCPA	6.756f	7.214f	7242108	21512619	<MDL	2.433 #
8) T DICHLORPROP	0.000	7.646f	0	4833245	N.D.	2.454
9) T 2,4-D	7.302	7.946f	2061032	-65568	<MDL	N.D. #
10) T Pentachlo...	7.547	0.000	775049	0	<MDL	N.D. #
11) T 2,4,5-TP ...	8.085	8.683	4131683	2633993	<MDL	<MDL #
12) T 2,4,5-T	8.296f	9.080	33471758	1322251	1.774	<MDL #
13) T 2,4-DB	8.831	9.638f	3124641	1921519	<MDL	1.337 #
14) T DINOSEB	9.963f	9.894	2063992	827750	<MDL	<MDL #
15) T Picloram	9.723	10.903	28376287	35621664	<MDL	2.191 #
16) T DCPA	10.161	10.820	1979481	1471722	<MDL	<MDL #

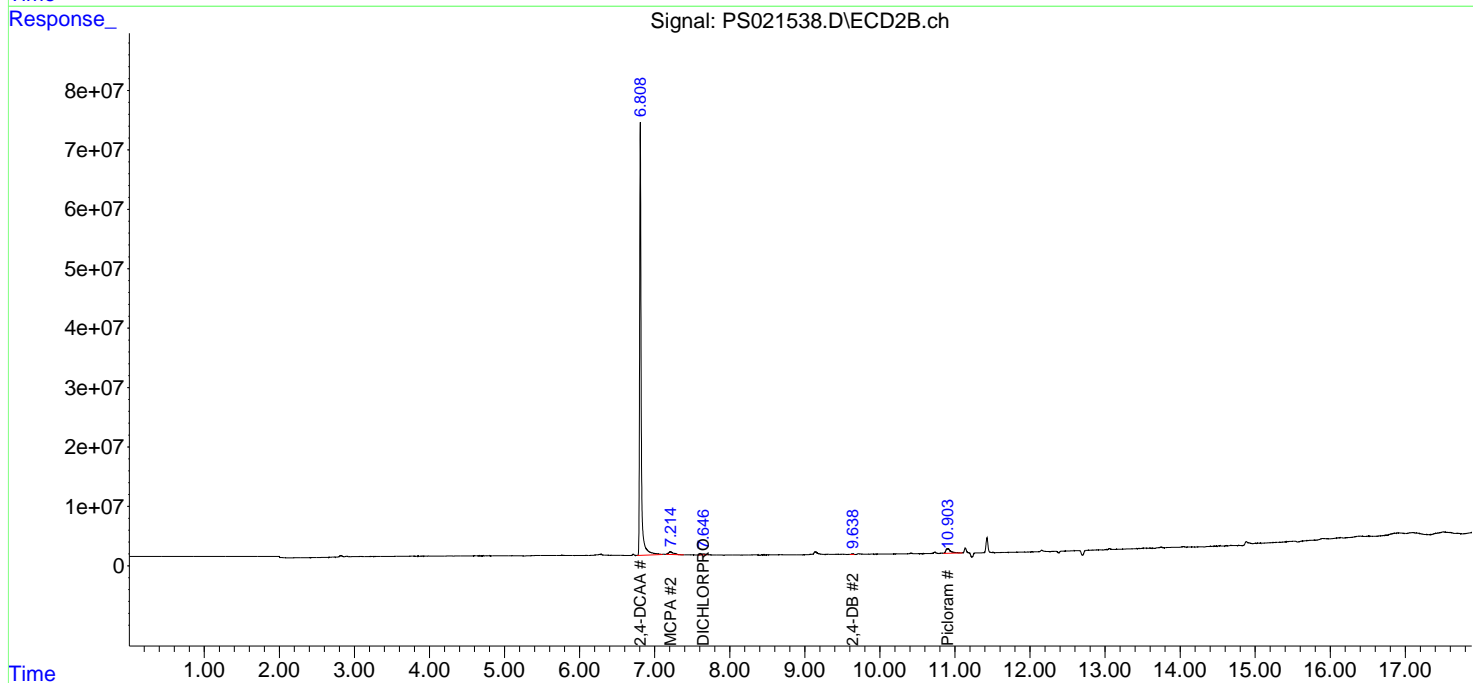
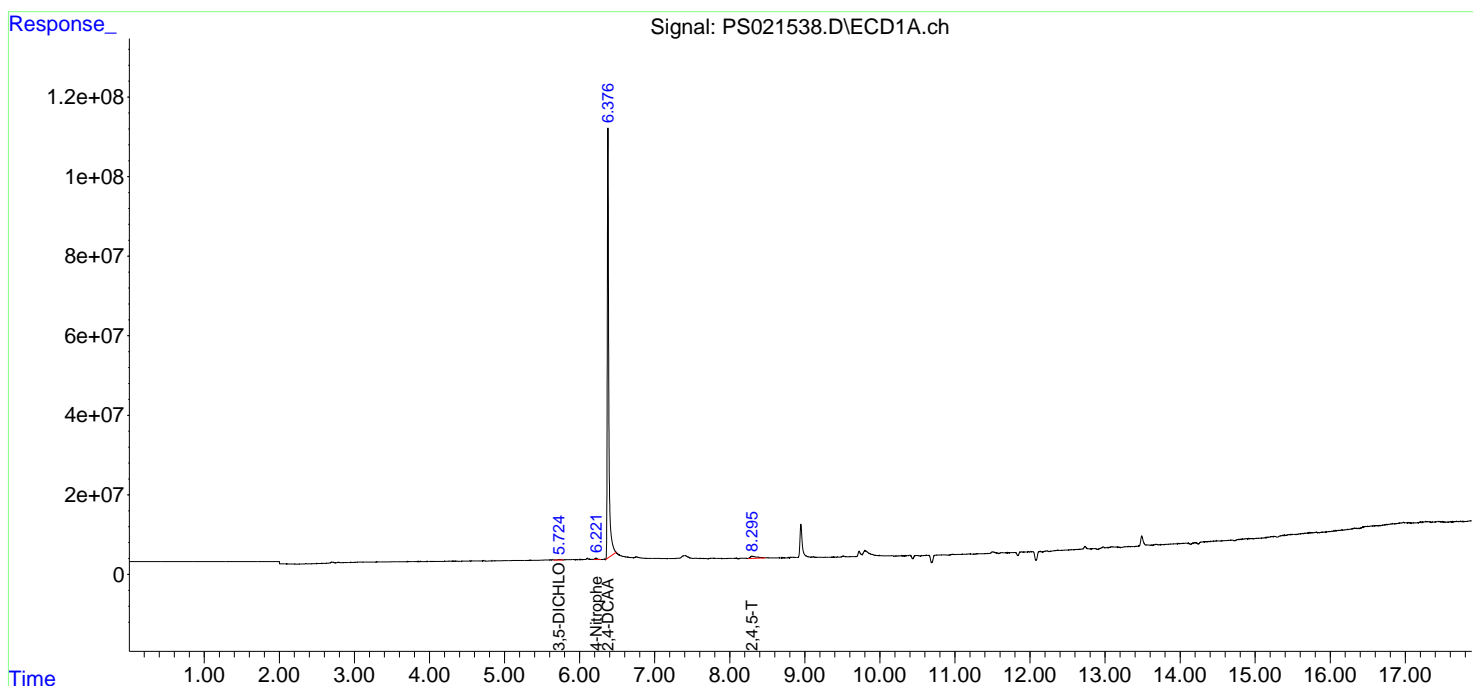
(f)=RT Delta > 1/2 Window (#)=Amounts differ by > 25% (m)=manual int.

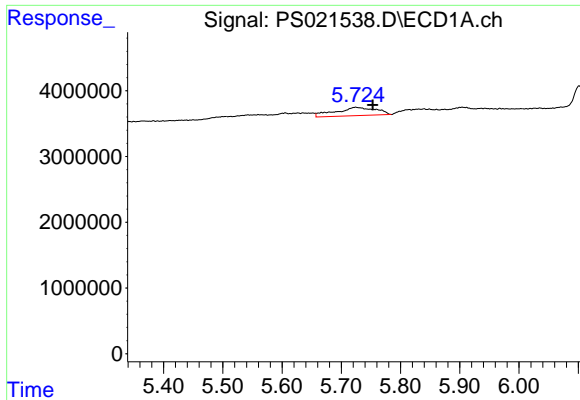
Data Path : Z:\pestpcbsrv\HPCHEM1\ECD_S\Data\PS122322\
 Data File : PS021538.D
 Signal(s) : Signal #1: ECD1A.ch Signal #2: ECD2B.ch
 Acq On : 23 Dec 2022 08:49
 Operator : AR\AJ
 Sample : I.BLK
 Misc :
 ALS Vial : 2 Sample Multiplier: 1

Instrument :
 ECD_S
 ClientSampleId :

Integration File signal 1: autoint1.e
 Integration File signal 2: autoint2.e
 Quant Time: Dec 24 01:14:58 2022
 Quant Method : Z:\pestpcbsrv\HPCHEM1\ECD_S\Method\PS120722.M
 Quant Title : 8080.M
 QLast Update : Wed Dec 07 15:59:29 2022
 Response via : Initial Calibration
 Integrator: ChemStation

Volume Inj. : 2 µl
 Signal #1 Phase : Rtx-CLPesticides Signal #2 Phase: Rtx-CLPesticides2
 Signal #1 Info : 30M x 0.32mm x 0.5 Signal #2 Info : 30M x 0.32mm x 0.25µm

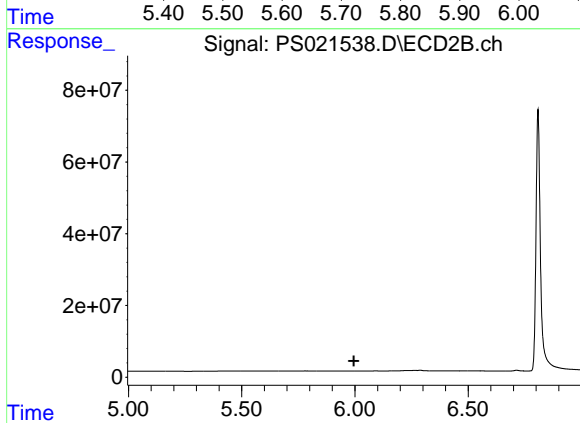




#2 3,5-DICHLOROBENZOIC ACID

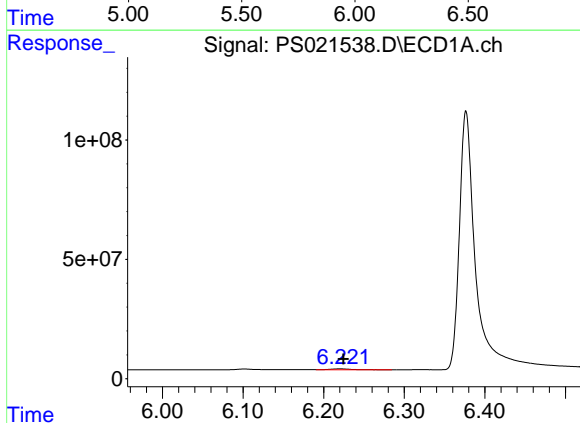
R.T.: 5.724 min
 Delta R.T.: -0.028 min
 Response: 5951953
 Conc: 1.50 ng/ml

Instrument :
 ECD_S
 ClientSampleId :



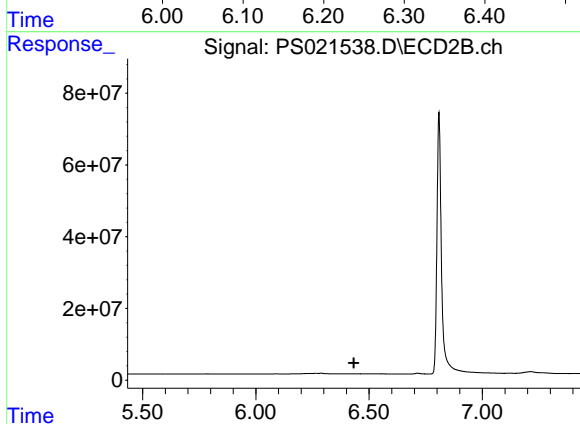
#2 3,5-DICHLOROBENZOIC ACID

R.T.: 0.000 min
 Exp R.T. : 5.996 min
 Response: 0
 Conc: N.D.



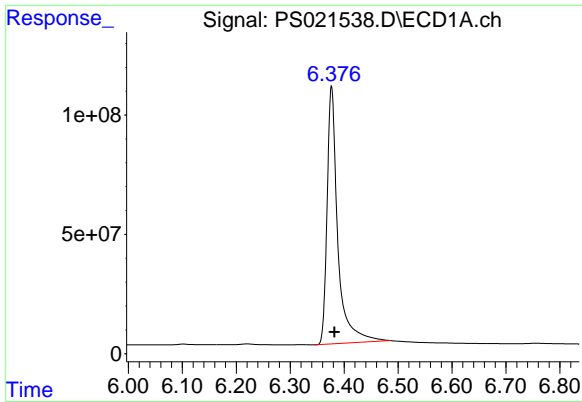
#3 4-Nitrophenol

R.T.: 6.221 min
 Delta R.T.: -0.004 min
 Response: 6890038
 Conc: 3.83 ng/ml



#3 4-Nitrophenol

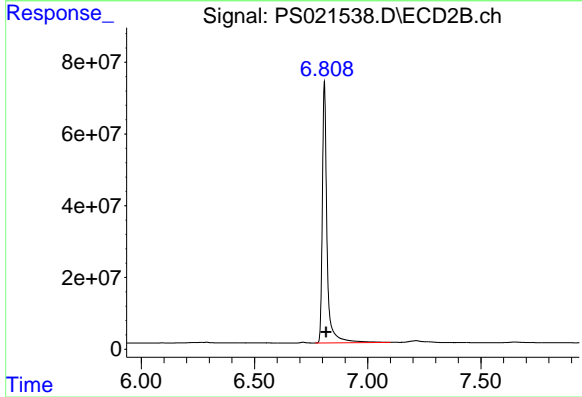
R.T.: 0.000 min
 Exp R.T. : 6.433 min
 Response: 0
 Conc: N.D.



#4 2,4-DCAA

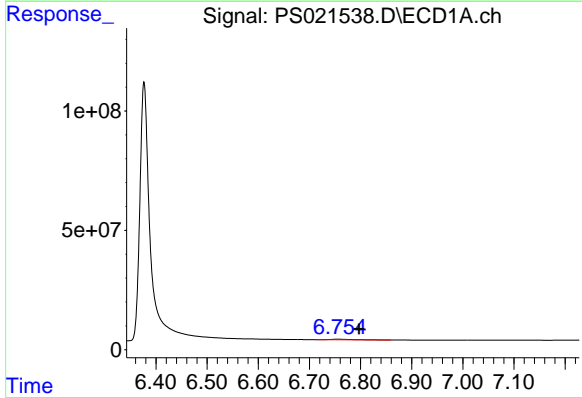
R.T.: 6.377 min
 Delta R.T.: -0.005 min
 Response: 1488588515
 Conc: 512.34 ng/ml

Instrument :
 ECD_S
 ClientSampleId :



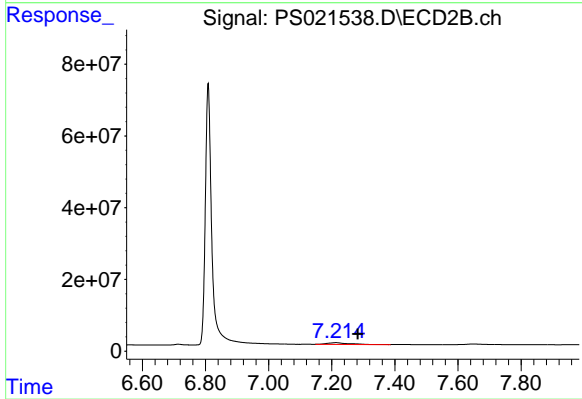
#4 2,4-DCAA

R.T.: 6.809 min
 Delta R.T.: -0.007 min
 Response: 1052077349
 Conc: 610.26 ng/ml



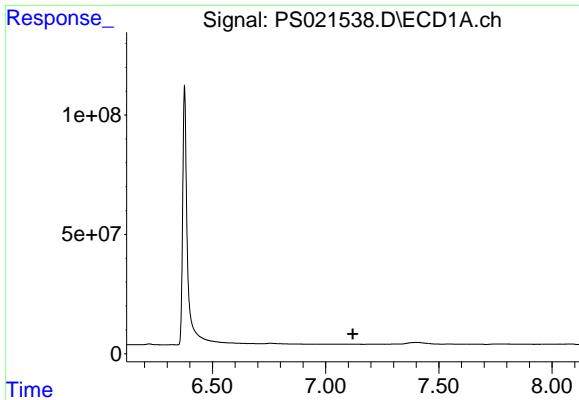
#7 MCPA

R.T.: 6.756 min
 Delta R.T.: -0.042 min
 Response: 7242108
 Conc: N.D.



#7 MCPA

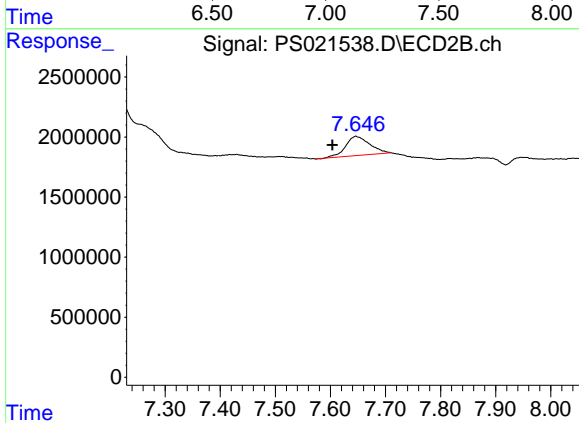
R.T.: 7.214 min
 Delta R.T.: -0.069 min
 Response: 21512619
 Conc: 2.43 ug/ml



#8 DICHLORPROP

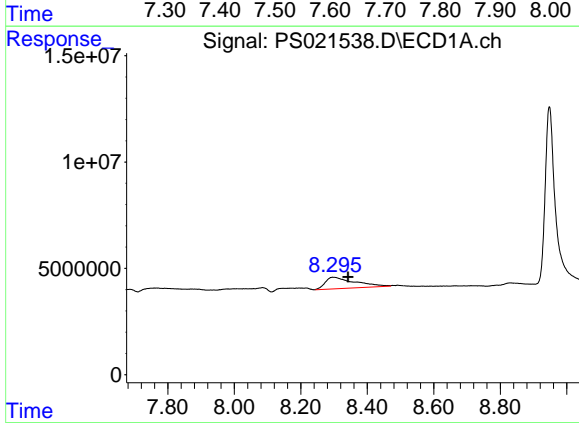
R.T.: 0.000 min
 Exp R.T.: 7.120 min
 Response: 0
 Conc: N.D.

Instrument :
 ECD_S
 ClientSampleId :



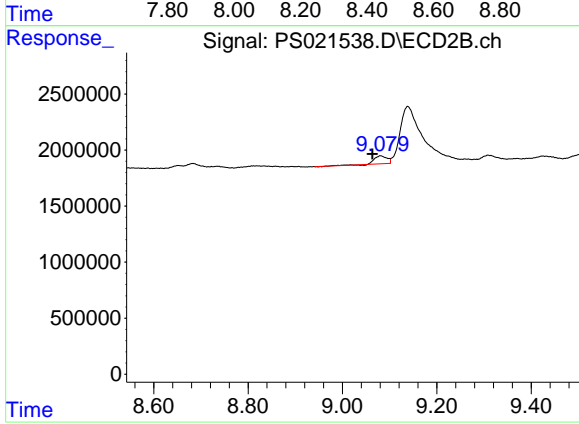
#8 DICHLORPROP

R.T.: 7.646 min
 Delta R.T.: 0.042 min
 Response: 4833245
 Conc: 2.45 ng/ml



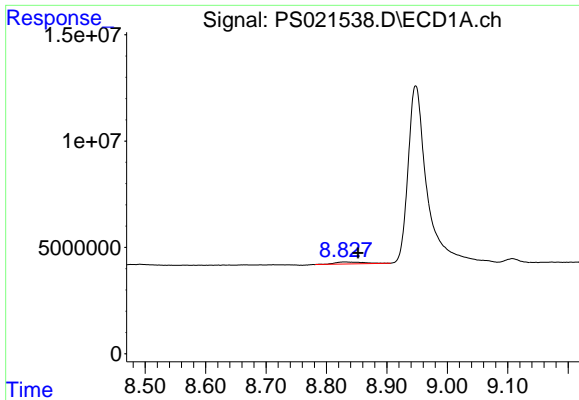
#12 2,4,5-T

R.T.: 8.296 min
 Delta R.T.: -0.046 min
 Response: 33471758
 Conc: 1.77 ng/ml



#12 2,4,5-T

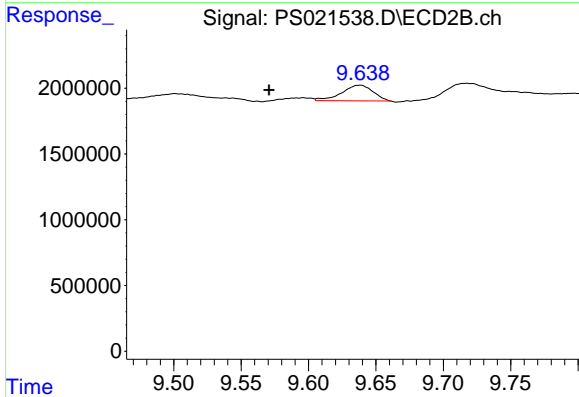
R.T.: 9.080 min
 Delta R.T.: 0.017 min
 Response: 1322251
 Conc: N.D.



#13 2,4-DB

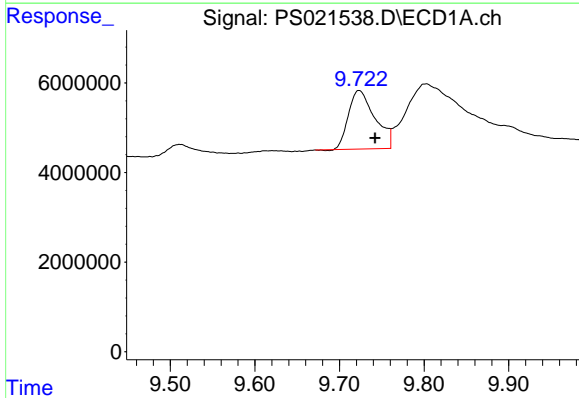
R.T.: 8.831 min
 Delta R.T.: -0.021 min
 Response: 3124641
 Conc: N.D.

Instrument :
 ECD_S
 ClientSampleId :



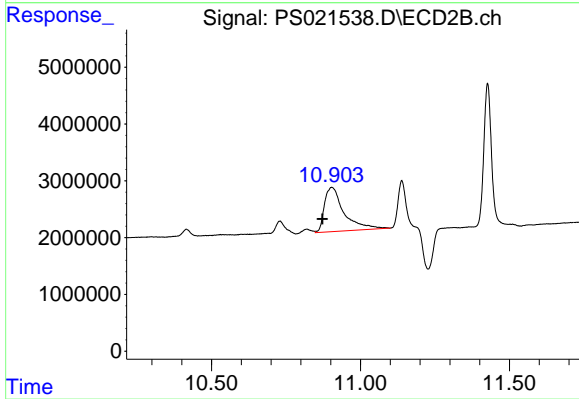
#13 2,4-DB

R.T.: 9.638 min
 Delta R.T.: 0.067 min
 Response: 1921519
 Conc: 1.34 ng/ml



#15 Picloram

R.T.: 9.723 min
 Delta R.T.: -0.019 min
 Response: 28376287
 Conc: N.D.



#15 Picloram

R.T.: 10.903 min
 Delta R.T.: 0.031 min
 Response: 35621664
 Conc: 2.19 ng/ml