

Data Path : Z:\pestpcbsrv\HPCHEM1\ECD_S\Data\PS122322\
 Data File : PS021549.D
 Signal(s) : Signal #1: ECD1A.ch Signal #2: ECD2B.ch
 Acq On : 23 Dec 2022 18:02
 Operator : AR\AJ
 Sample : N6051-02MSD
 Misc :
 ALS Vial : 11 Sample Multiplier: 1

Instrument :
 ECD_S
 ClientSampleId :

Integration File signal 1: autoint1.e
 Integration File signal 2: autoint2.e
 Quant Time: Dec 24 01:19:26 2022
 Quant Method : Z:\pestpcbsrv\HPCHEM1\ECD_S\Method\PS120722.M
 Quant Title : 8080.M
 QLast Update : Wed Dec 07 15:59:29 2022
 Response via : Initial Calibration
 Integrator: ChemStation

Volume Inj. : 2 µl
 Signal #1 Phase : Rtx-CLPesticides Signal #2 Phase: Rtx-CLPesticides2
 Signal #1 Info : 30M x 0.32mm x0.5 Signal #2 Info : 30M x 0.32mm x 0.25µm

	Compound	RT#1	RT#2	Resp#1	Resp#2	ng/ml	ng/ml

System Monitoring Compounds							
4) S	2,4-DCAA	6.375	6.808	1553.5E6	1096.2E6	534.660	635.871
Target Compounds							
1) T	Dalapon	2.480	2.556	1474.4E6	1597.3E6	466.578	711.512 #
2) T	3,5-DICHL...	5.746	5.989	2226.0E6	1429.4E6	560.093	546.226
3) T	4-Nitroph...	6.213	6.423	813.9E6	562.5E6	452.665	482.707
5) T	DICAMBA	6.516	6.972	6107.4E6	4091.2E6	530.744	535.689
6) T	MCP P	6.672	7.070	472.2E6	343.4E6	50.574	58.358
7) T	MCPA	6.797	7.282	615.4E6	450.4E6	48.041	50.931
8) T	DICHLORPROP	7.114	7.598	1655.0E6	1115.3E6	526.445	566.252
9) T	2,4-D	7.317	7.888	2035.9E6	1410.1E6	532.812	584.544
10) T	Pentachlo...	7.545	8.316	24975.1E6	15621.9E6	614.156	592.587
11) T	2,4,5-TP ...	8.073	8.678	10211.4E6	6267.5E6	552.247	559.677
12) T	2,4,5-T	8.333	9.054	10080.6E6	5891.3E6	534.284	543.551
13) T	2,4-DB	8.844	9.562	1597.3E6	949.3E6	436.145	660.387 #
14) T	DINOSEB	9.898	9.889	7934.7E6	4009.2E6	498.013	506.909
15) T	Picloram	9.732	10.860	12508.3E6	7201.0E6	436.741	442.821
16) T	DCPA	10.165	10.817	13766.4E6	7161.4E6	540.545	527.807

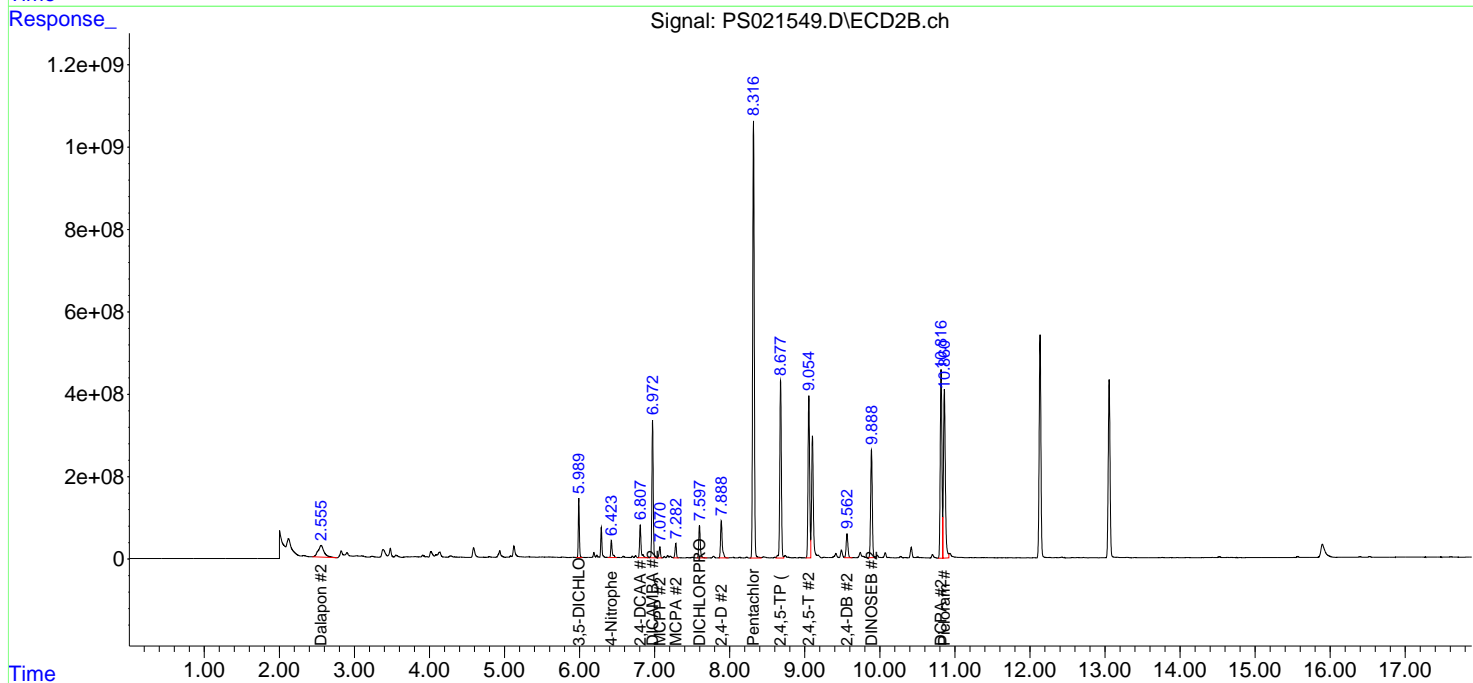
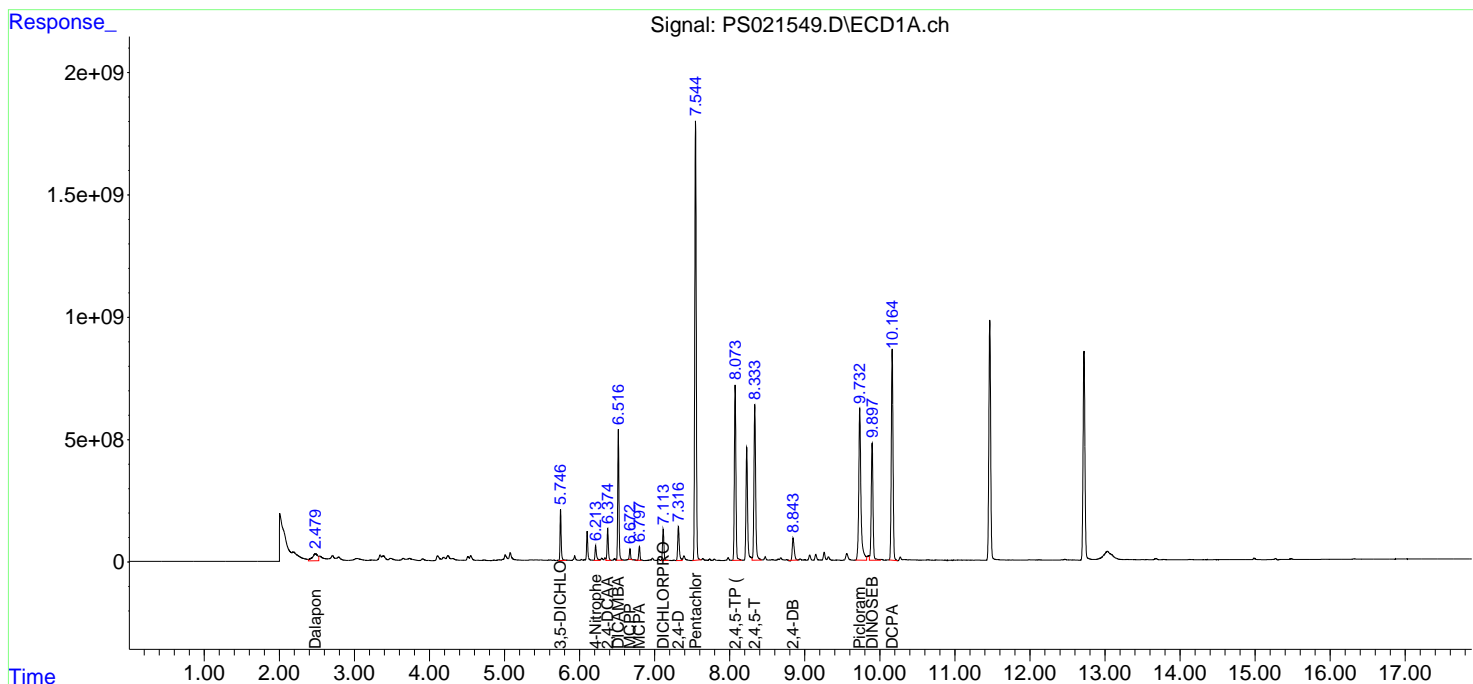
(f)=RT Delta > 1/2 Window (#)=Amounts differ by > 25% (m)=manual int.

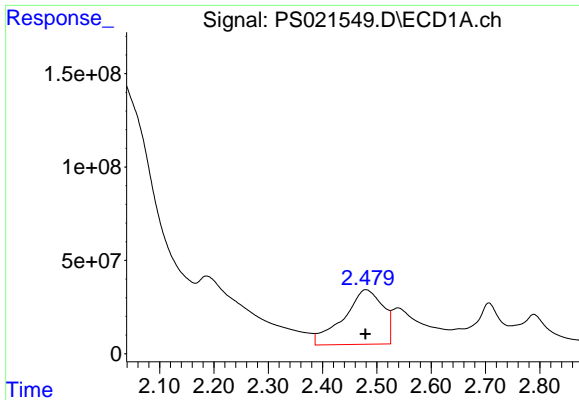
Data Path : Z:\pestpcbsrv\HPCHEM1\ECD_S\Data\PS122322\
 Data File : PS021549.D
 Signal(s) : Signal #1: ECD1A.ch Signal #2: ECD2B.ch
 Acq On : 23 Dec 2022 18:02
 Operator : AR\AJ
 Sample : N6051-02MSD
 Misc :
 ALS Vial : 11 Sample Multiplier: 1

Instrument :
 ECD_S
 ClientSampleId :

Integration File signal 1: autoint1.e
 Integration File signal 2: autoint2.e
 Quant Time: Dec 24 01:19:26 2022
 Quant Method : Z:\pestpcbsrv\HPCHEM1\ECD_S\Method\PS120722.M
 Quant Title : 8080.M
 QLast Update : Wed Dec 07 15:59:29 2022
 Response via : Initial Calibration
 Integrator: ChemStation

Volume Inj. : 2 µl
 Signal #1 Phase : Rtx-CLPesticides Signal #2 Phase: Rtx-CLPesticides2
 Signal #1 Info : 30M x 0.32mm x0.5 Signal #2 Info : 30M x 0.32mm x 0.25µm

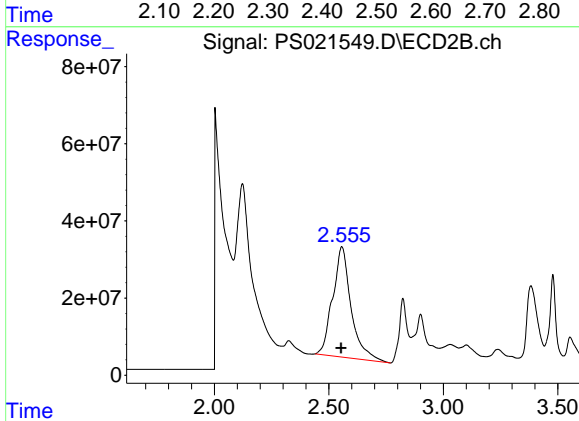




#1 Dalapon

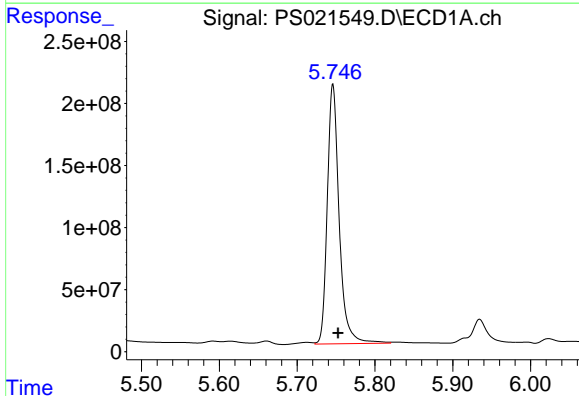
R.T.: 2.480 min
 Delta R.T.: 0.000 min
 Response: 1474421091
 Conc: 466.58 ng/ml

Instrument :
 ECD_S
 ClientSampleId :



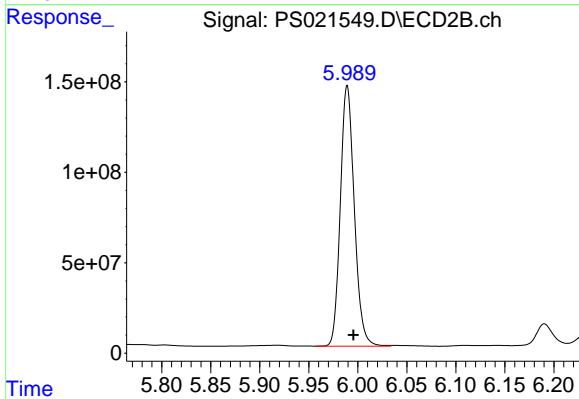
#1 Dalapon

R.T.: 2.556 min
 Delta R.T.: 0.002 min
 Response: 1597298997
 Conc: 711.51 ng/ml



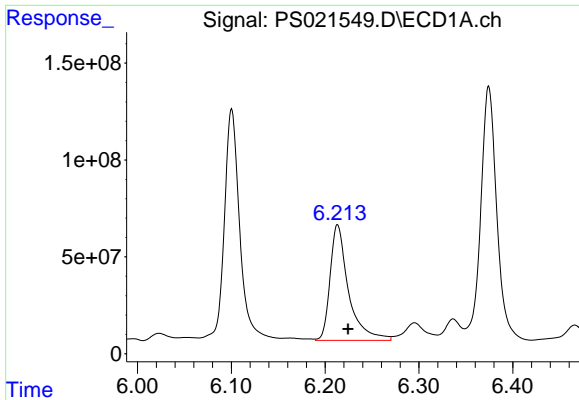
#2 3,5-DICHLOROBENZOIC ACID

R.T.: 5.746 min
 Delta R.T.: -0.007 min
 Response: 2226019937
 Conc: 560.09 ng/ml



#2 3,5-DICHLOROBENZOIC ACID

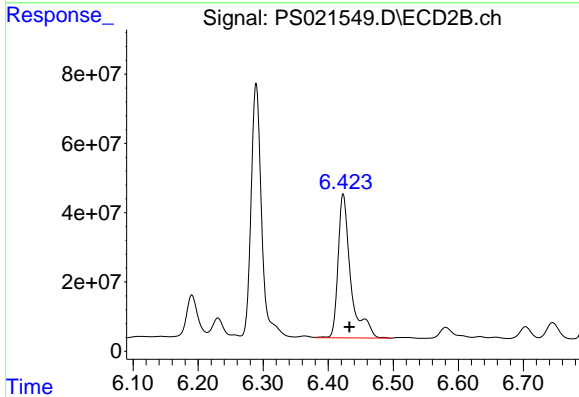
R.T.: 5.989 min
 Delta R.T.: -0.006 min
 Response: 1429351218
 Conc: 546.23 ng/ml



#3 4-Nitrophenol

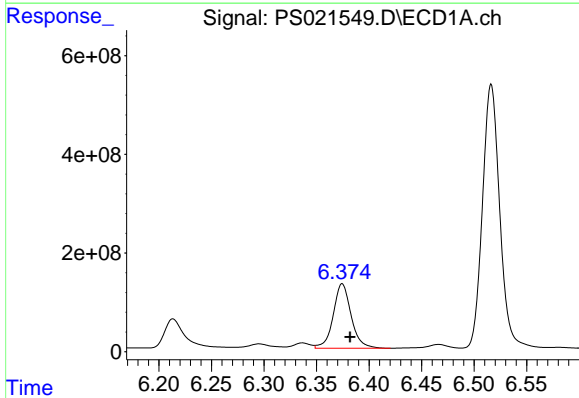
R.T.: 6.213 min
 Delta R.T.: -0.011 min
 Response: 813939448
 Conc: 452.67 ng/ml

Instrument :
 ECD_S
 ClientSampleId :



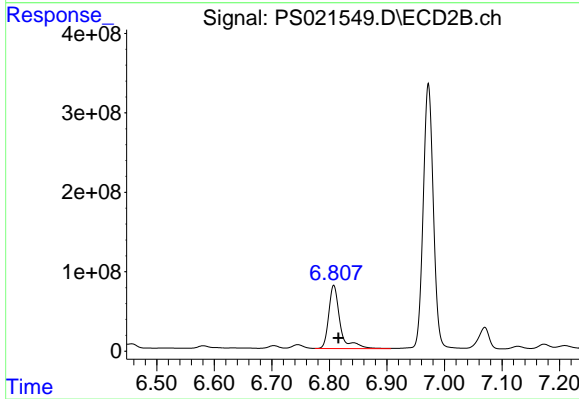
#3 4-Nitrophenol

R.T.: 6.423 min
 Delta R.T.: -0.009 min
 Response: 562517566
 Conc: 482.71 ng/ml



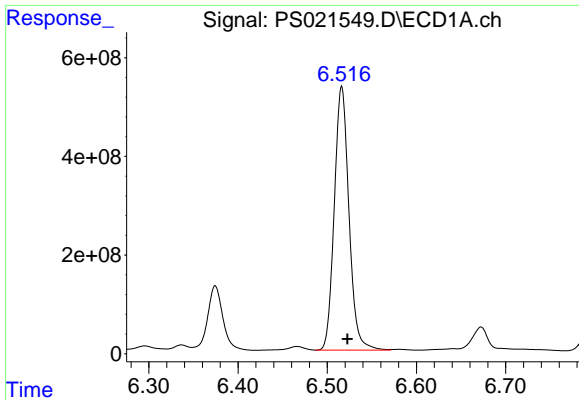
#4 2,4-DCAA

R.T.: 6.375 min
 Delta R.T.: -0.007 min
 Response: 1553450299
 Conc: 534.66 ng/ml



#4 2,4-DCAA

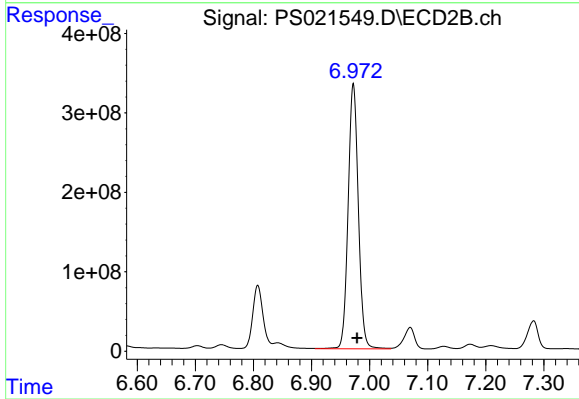
R.T.: 6.808 min
 Delta R.T.: -0.008 min
 Response: 1096237027
 Conc: 635.87 ng/ml



#5 DICAMBA

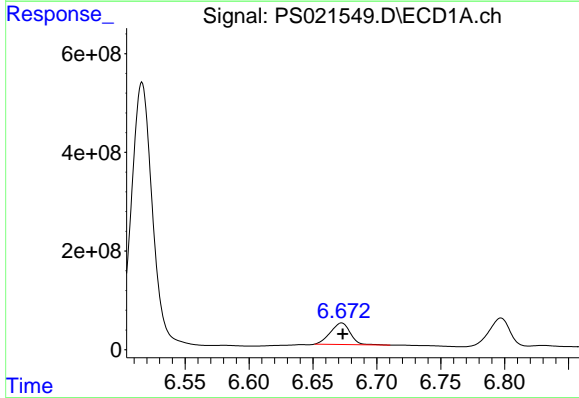
R.T.: 6.516 min
 Delta R.T.: -0.006 min
 Response: 6107435720
 Conc: 530.74 ng/ml

Instrument :
 ECD_S
 ClientSampleId :



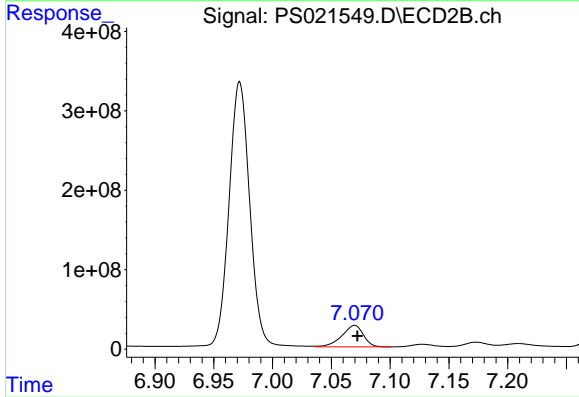
#5 DICAMBA

R.T.: 6.972 min
 Delta R.T.: -0.007 min
 Response: 4091154963
 Conc: 535.69 ng/ml



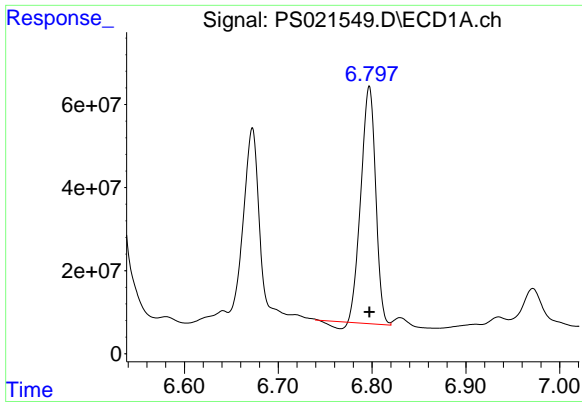
#6 MCP

R.T.: 6.672 min
 Delta R.T.: -0.001 min
 Response: 472216076
 Conc: 50.57 ug/ml



#6 MCP

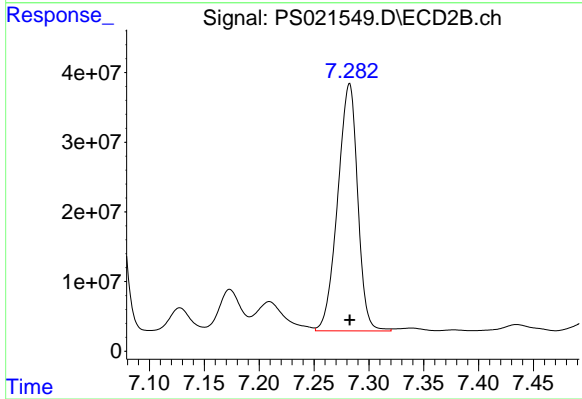
R.T.: 7.070 min
 Delta R.T.: -0.003 min
 Response: 343378012
 Conc: 58.36 ug/ml



#7 MCPA

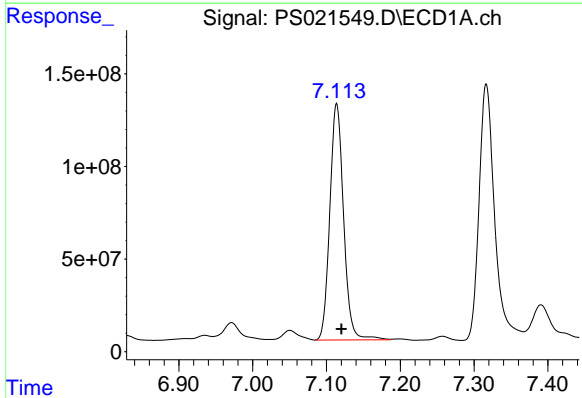
R.T.: 6.797 min
 Delta R.T.: 0.000 min
 Response: 615386532
 Conc: 48.04 ug/ml

Instrument :
 ECD_S
 ClientSampleId :



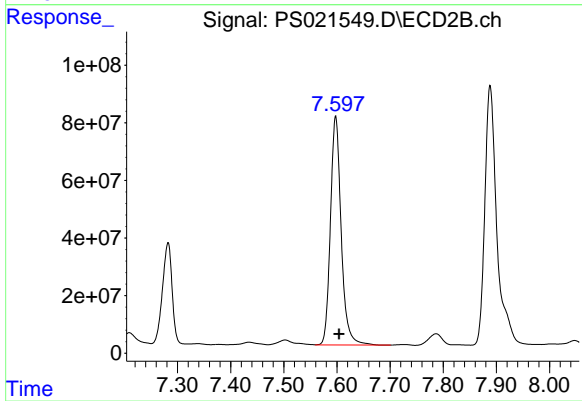
#7 MCPA

R.T.: 7.282 min
 Delta R.T.: 0.000 min
 Response: 450371355
 Conc: 50.93 ug/ml



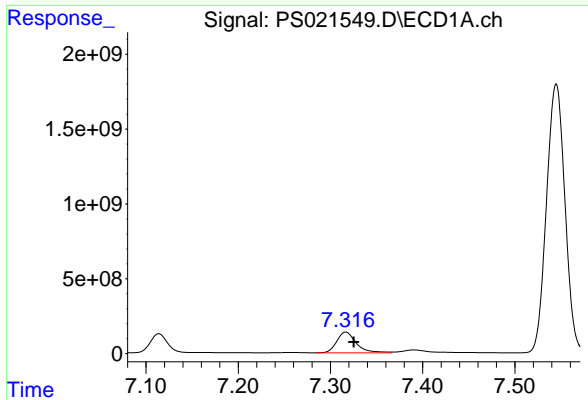
#8 DICHLORPROP

R.T.: 7.114 min
 Delta R.T.: -0.006 min
 Response: 1655024744
 Conc: 526.44 ng/ml



#8 DICHLORPROP

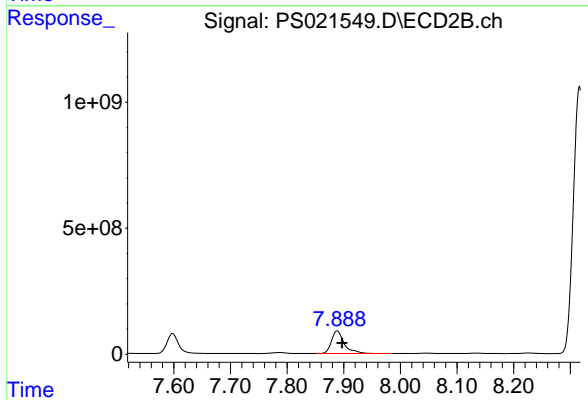
R.T.: 7.598 min
 Delta R.T.: -0.006 min
 Response: 1115308452
 Conc: 566.25 ng/ml



#9 2,4-D

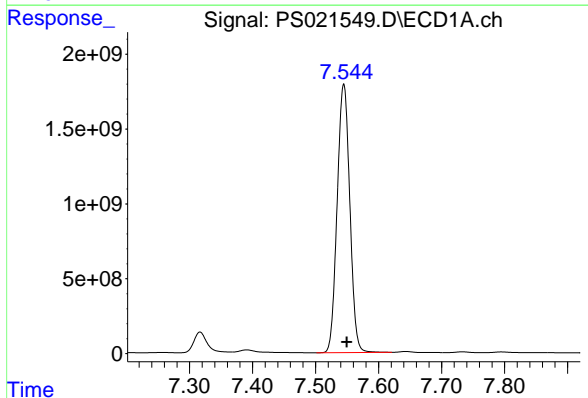
R.T.: 7.317 min
 Delta R.T.: -0.009 min
 Response: 2035946939
 Conc: 532.81 ng/ml

Instrument :
 ECD_S
 ClientSampleId :



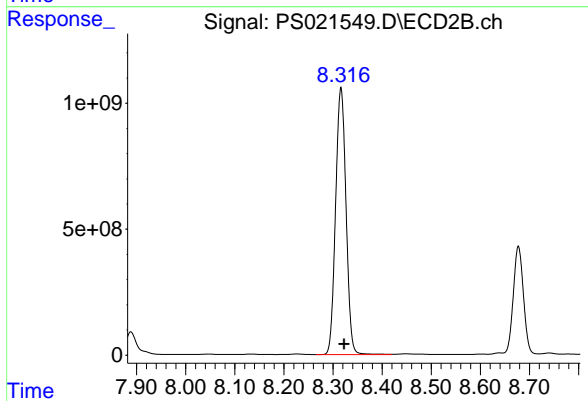
#9 2,4-D

R.T.: 7.888 min
 Delta R.T.: -0.009 min
 Response: 1410094689
 Conc: 584.54 ng/ml



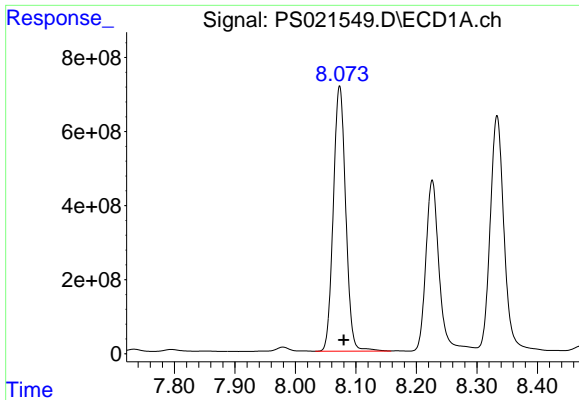
#10 Pentachlorophenol

R.T.: 7.545 min
 Delta R.T.: -0.005 min
 Response: 24975117543
 Conc: 614.16 ng/ml



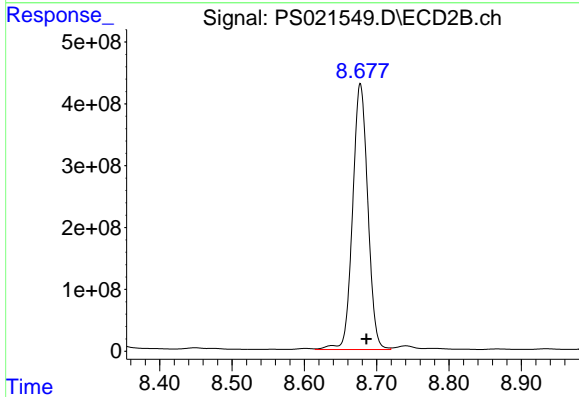
#10 Pentachlorophenol

R.T.: 8.316 min
 Delta R.T.: -0.006 min
 Response: 15621889487
 Conc: 592.59 ng/ml

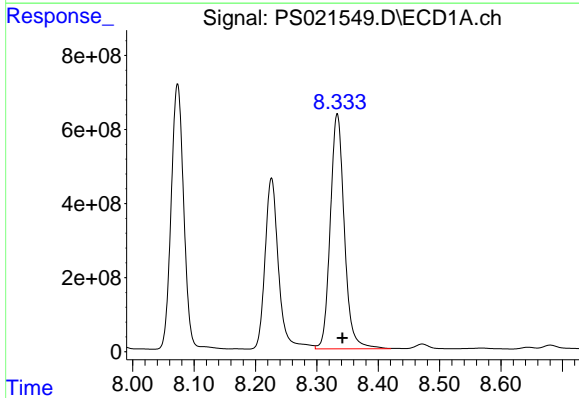


#11 2,4,5-TP (SILVEX)
 R.T.: 8.073 min
 Delta R.T.: -0.007 min
 Response: 10211382930
 Conc: 552.25 ng/ml

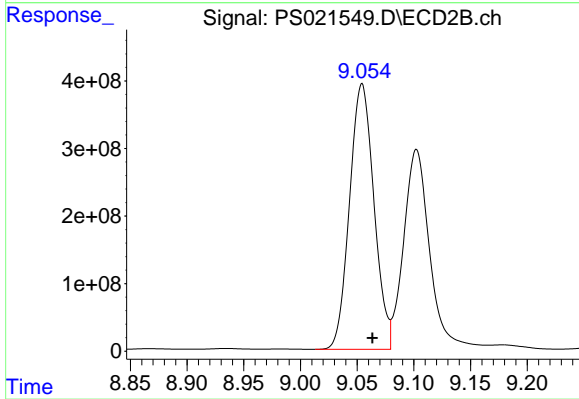
Instrument :
 ECD_S
 ClientSampleId :



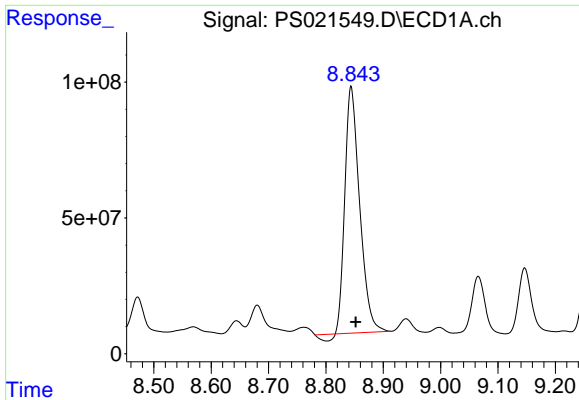
#11 2,4,5-TP (SILVEX)
 R.T.: 8.678 min
 Delta R.T.: -0.008 min
 Response: 6267546837
 Conc: 559.68 ng/ml



#12 2,4,5-T
 R.T.: 8.333 min
 Delta R.T.: -0.009 min
 Response: 10080609073
 Conc: 534.28 ng/ml



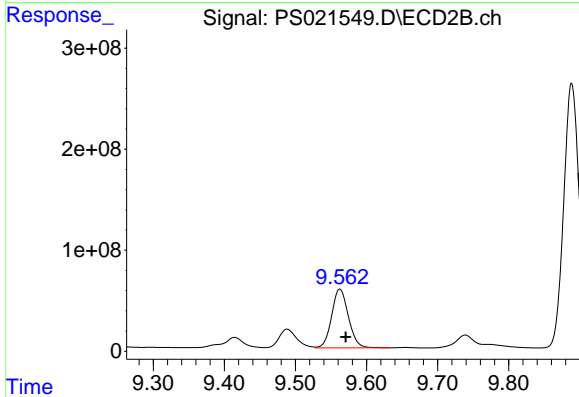
#12 2,4,5-T
 R.T.: 9.054 min
 Delta R.T.: -0.009 min
 Response: 5891331508
 Conc: 543.55 ng/ml



#13 2,4-DB

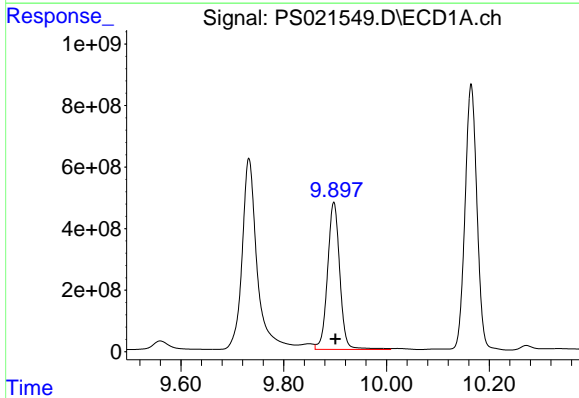
R.T.: 8.844 min
 Delta R.T.: -0.008 min
 Response: 1597274000
 Conc: 436.15 ng/ml

Instrument :
 ECD_S
 ClientSampleId :



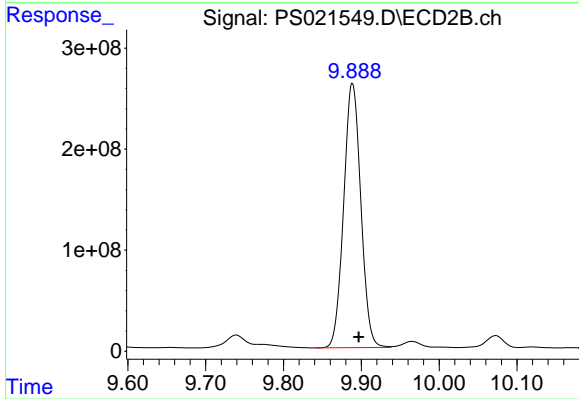
#13 2,4-DB

R.T.: 9.562 min
 Delta R.T.: -0.008 min
 Response: 949305507
 Conc: 660.39 ng/ml



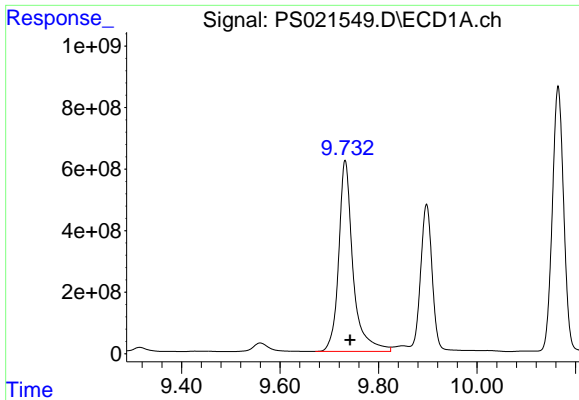
#14 DINOSEB

R.T.: 9.898 min
 Delta R.T.: -0.003 min
 Response: 7934710921
 Conc: 498.01 ng/ml



#14 DINOSEB

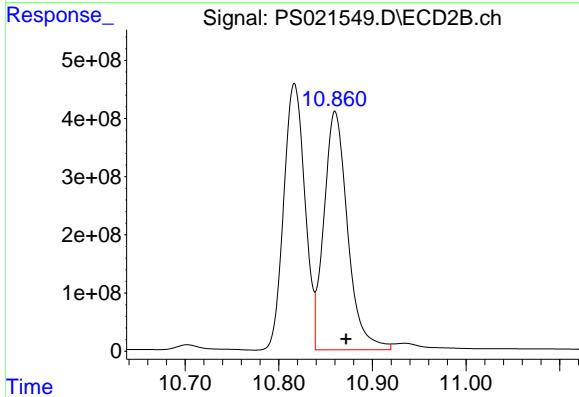
R.T.: 9.889 min
 Delta R.T.: -0.008 min
 Response: 4009225897
 Conc: 506.91 ng/ml



#15 Picloram

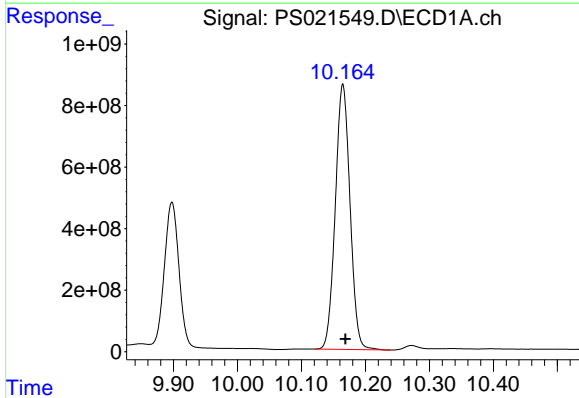
R.T.: 9.732 min
 Delta R.T.: -0.010 min
 Response: 12508269772
 Conc: 436.74 ng/ml

Instrument :
 ECD_S
 ClientSampleId :



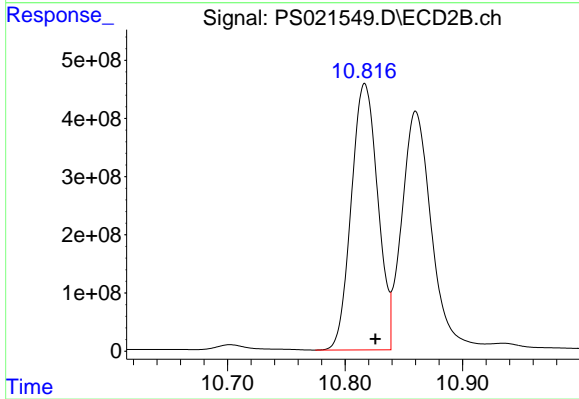
#15 Picloram

R.T.: 10.860 min
 Delta R.T.: -0.012 min
 Response: 7200997570
 Conc: 442.82 ng/ml



#16 DCPA

R.T.: 10.165 min
 Delta R.T.: -0.004 min
 Response: 13766383132
 Conc: 540.54 ng/ml



#16 DCPA

R.T.: 10.817 min
 Delta R.T.: -0.009 min
 Response: 7161419261
 Conc: 527.81 ng/ml