

Data Path : Z:\pestpcbsrv\HPCHEM1\ECD_S\Data\PS122324\
 Data File : PS028791.D
 Signal(s) : Signal #1: ECD1A.ch Signal #2: ECD2B.ch
 Acq On : 23 Dec 2024 12:59
 Operator : AR\AJ
 Sample : HSTDICC1500
 Misc :
 ALS Vial : 7 Sample Multiplier: 1

Instrument :
 ECD_S
 ClientSampleId :
 HSTDICC1500

Integration File signal 1: autoint1.e
 Integration File signal 2: autoint2.e
 Quant Time: Dec 23 13:37:42 2024
 Quant Method : Z:\pestpcbsrv\HPCHEM1\ECD_S\Method\PS122324.M
 Quant Title : 8080.M
 QLast Update : Mon Dec 23 13:35:06 2024
 Response via : Initial Calibration
 Integrator: ChemStation

Volume Inj. : 1 µl
 Signal #1 Phase : ZB-MR1 Signal #2 Phase: ZB-MR2
 Signal #1 Info : 30M x 0.32mm x0.5 Signal #2 Info : 30M x 0.32mm x 0.25µm

Compound	RT#1	RT#2	Resp#1	Resp#2	ng/ml	ng/ml

System Monitoring Compounds						
4) S 2,4-DCAA	7.210	7.700	3159.0E6	1634.0E6	1448.854	1477.000
Target Compounds						
1) T Dalapon	2.620	2.674	3901.5E6	2660.4E6	1367.777	1355.258
2) T 3,5-DICHL...	6.384	6.660	4307.4E6	2235.6E6	1353.554	1371.814
3) T 4-Nitroph...	7.007	7.228	1975.5E6	1099.5E6	1351.202	1352.954
5) T DICAMBA	7.396	7.898	13385.8E6	7820.8E6	1377.179	1405.324
6) T MCPP	7.584	8.007	952.4E6	470.5E6	144.213	141.020
7) T MCPA	7.735	8.252	1270.1E6	643.3E6	140.546	138.269
8) T DICHLORPROP	8.102	8.612	3474.4E6	1899.0E6	1364.612	1388.514
9) T 2,4-D	8.331	8.940	3718.3E6	1988.4E6	1357.155	1389.047
10) T Pentachlo...	8.631	9.465	45093.8E6	29077.7E6	1253.147	1364.143
11) T 2,4,5-TP ...	9.206	9.842	20859.8E6	12378.2E6	1370.560	1391.100
12) T 2,4,5-T	9.497	10.260	21373.9E6	11941.5E6	1363.706	1390.614
13) T 2,4-DB	10.068	10.826	4130.0E6	1402.8E6	1392.613	1420.801
14) T DINOSEB	11.276	11.204	17617.5E6	8297.5E6	1356.705	1379.055
15) T Picloram	11.084	12.292	36367.3E6	18444.3E6	1382.691	1413.049
16) T DCPA	11.570	12.246	31790.5E6	15026.5E6	1372.953	1404.946

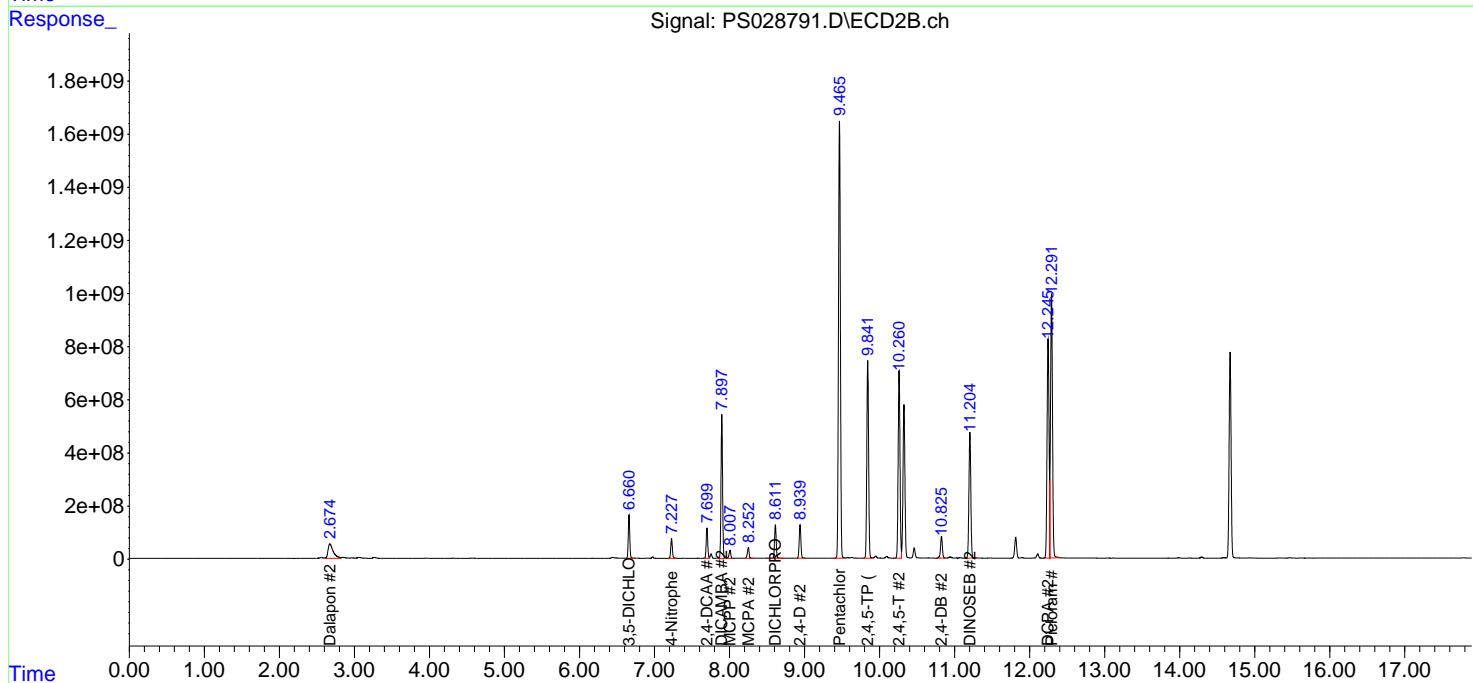
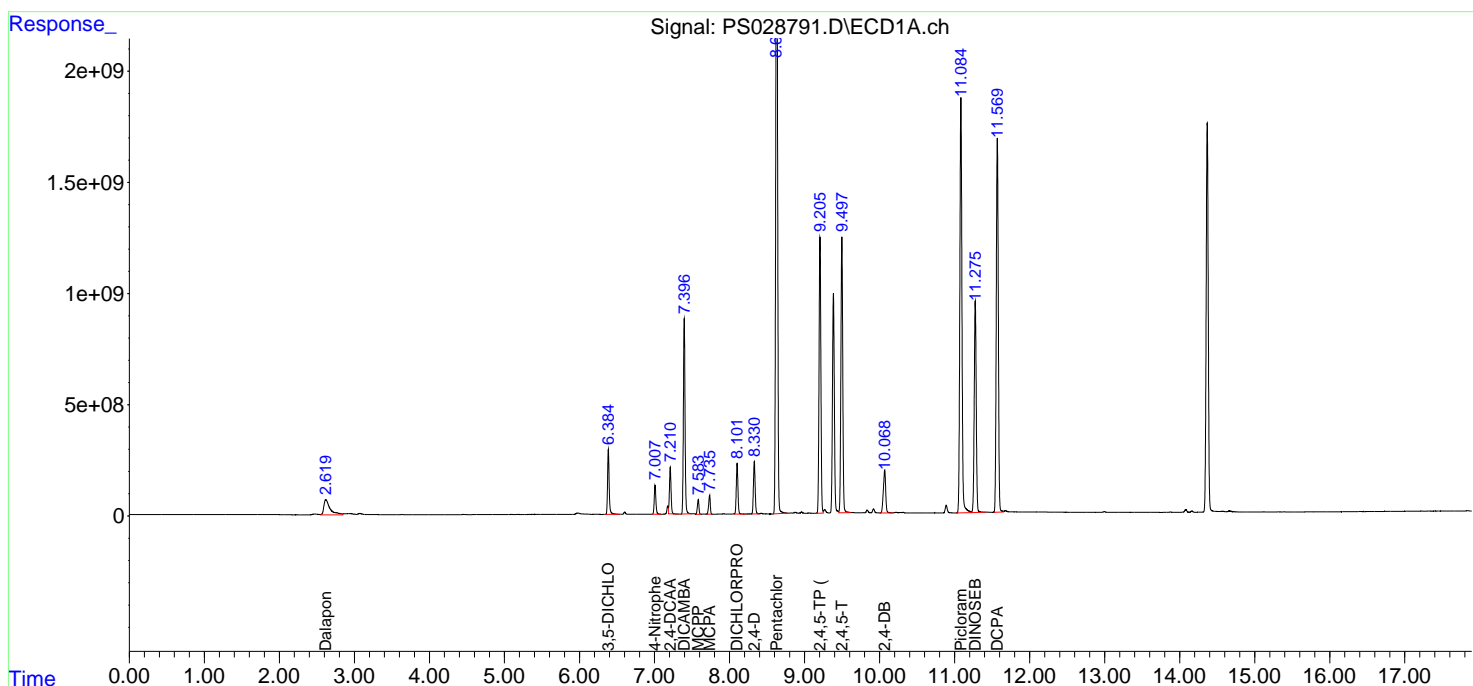
(f)=RT Delta > 1/2 Window (#)=Amounts differ by > 25% (m)=manual int.

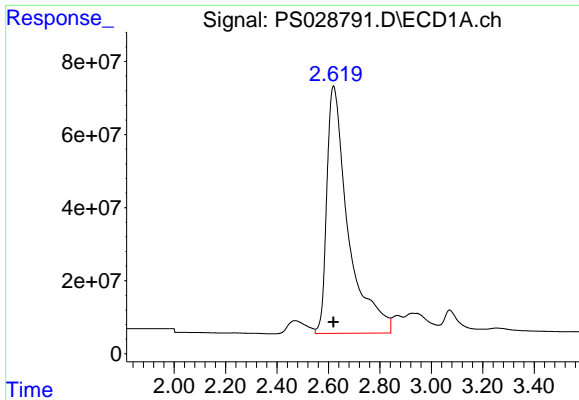
Data Path : Z:\pestpcbsrv\HPCHEM1\ECD_S\Data\PS122324\
 Data File : PS028791.D
 Signal(s) : Signal #1: ECD1A.ch Signal #2: ECD2B.ch
 Acq On : 23 Dec 2024 12:59
 Operator : AR\AJ
 Sample : HSTDICC1500
 Misc :
 ALS Vial : 7 Sample Multiplier: 1

Instrument :
 ECD_S
 ClientSampleId :
 HSTDICC1500

Integration File signal 1: autoint1.e
 Integration File signal 2: autoint2.e
 Quant Time: Dec 23 13:37:42 2024
 Quant Method : Z:\pestpcbsrv\HPCHEM1\ECD_S\Method\PS122324.M
 Quant Title : 8080.M
 QLast Update : Mon Dec 23 13:35:06 2024
 Response via : Initial Calibration
 Integrator: ChemStation

Volume Inj. : 1 µl
 Signal #1 Phase : ZB-MR1 Signal #2 Phase: ZB-MR2
 Signal #1 Info : 30M x 0.32mm x0.5 Signal #2 Info : 30M x 0.32mm x 0.25µm

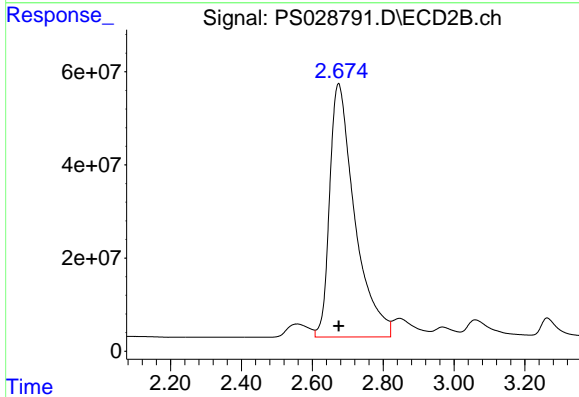




#1 Dalapon

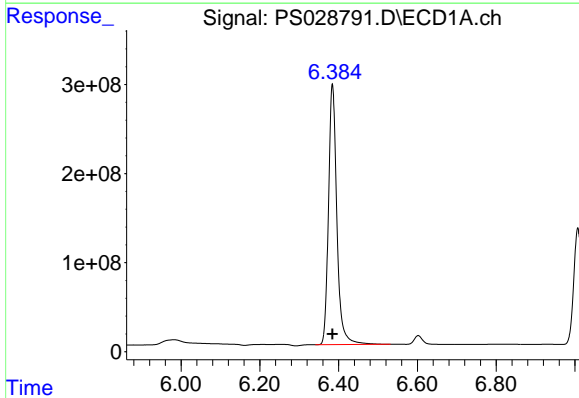
R.T.: 2.620 min
 Delta R.T.: 0.000 min
 Response: 3901479879
 Conc: 1367.78 ng/ml

Instrument :
 ECD_S
 ClientSampleId :
 HSTDICC1500



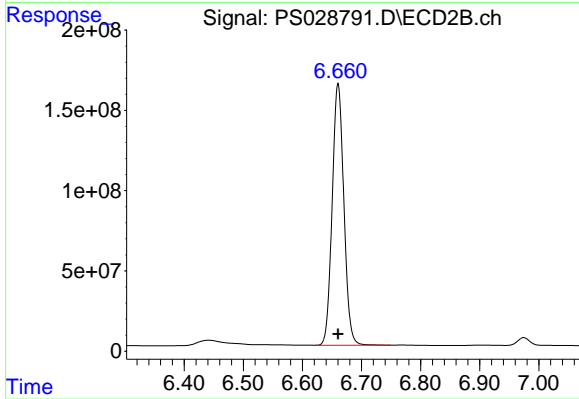
#1 Dalapon

R.T.: 2.674 min
 Delta R.T.: 0.000 min
 Response: 2660428203
 Conc: 1355.26 ng/ml



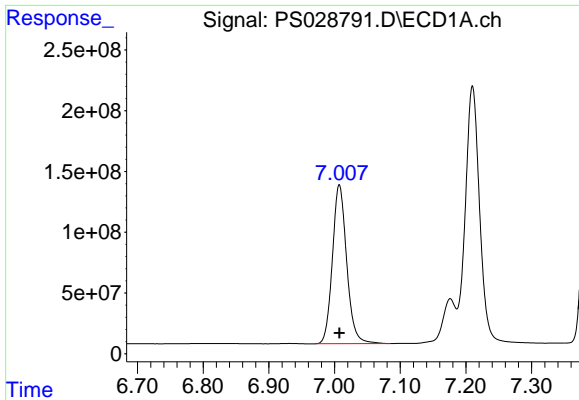
#2 3,5-DICHLOROBENZOIC ACID

R.T.: 6.384 min
 Delta R.T.: 0.000 min
 Response: 4307385267
 Conc: 1353.55 ng/ml



#2 3,5-DICHLOROBENZOIC ACID

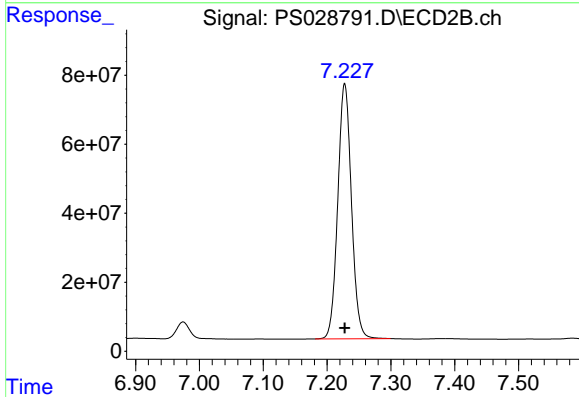
R.T.: 6.660 min
 Delta R.T.: 0.000 min
 Response: 2235587156
 Conc: 1371.81 ng/ml



#3 4-Nitrophenol

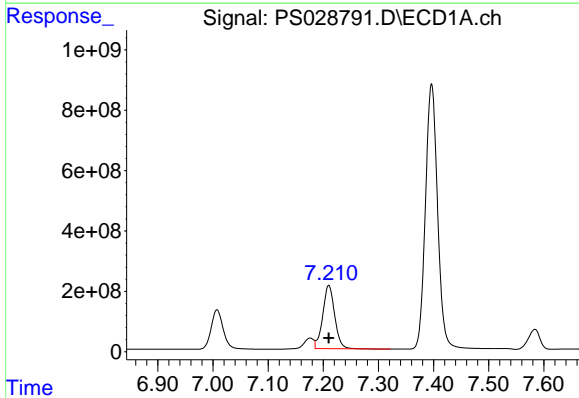
R.T.: 7.007 min
 Delta R.T.: 0.000 min
 Response: 1975450118
 Conc: 1351.20 ng/ml

Instrument :
 ECD_S
 ClientSampleId :
 HSTDICC1500



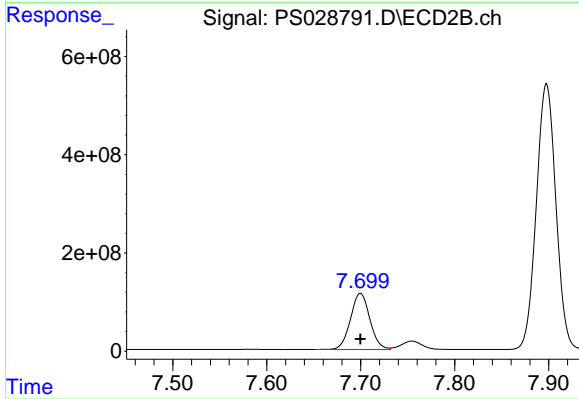
#3 4-Nitrophenol

R.T.: 7.228 min
 Delta R.T.: 0.000 min
 Response: 1099486307
 Conc: 1352.95 ng/ml



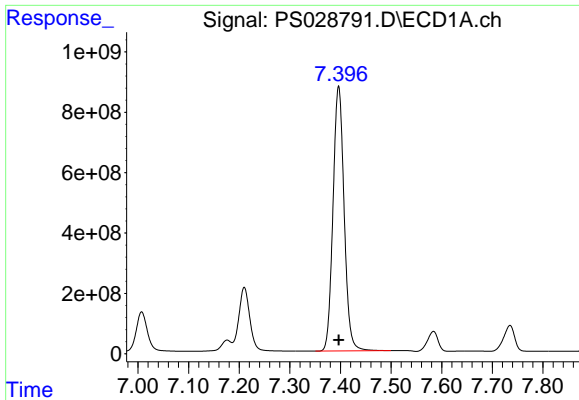
#4 2,4-DCAA

R.T.: 7.210 min
 Delta R.T.: 0.000 min
 Response: 3159021002
 Conc: 1448.85 ng/ml



#4 2,4-DCAA

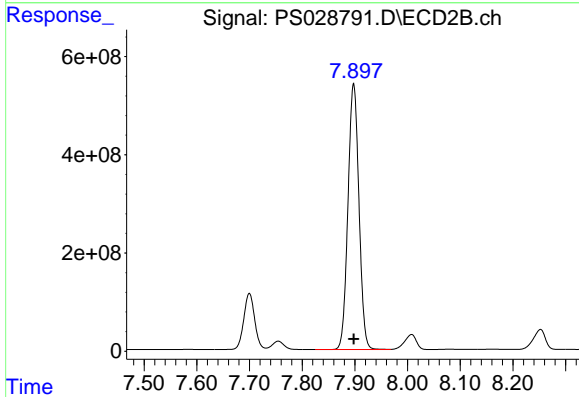
R.T.: 7.700 min
 Delta R.T.: 0.000 min
 Response: 1633970858
 Conc: 1477.00 ng/ml



#5 DICAMBA

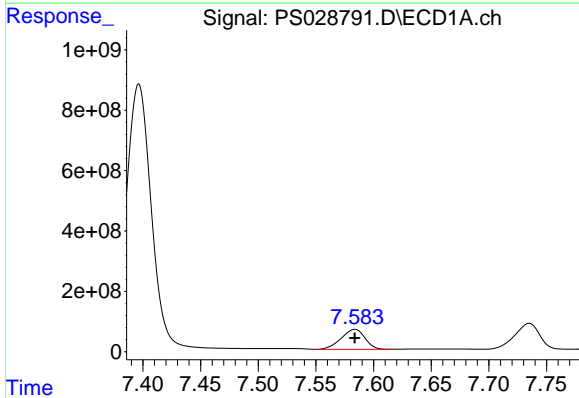
R.T.: 7.396 min
 Delta R.T.: 0.000 min
 Response: 13385828858
 Conc: 1377.18 ng/m

Instrument :
 ECD_S
 ClientSampleId :
 HSTDICC1500



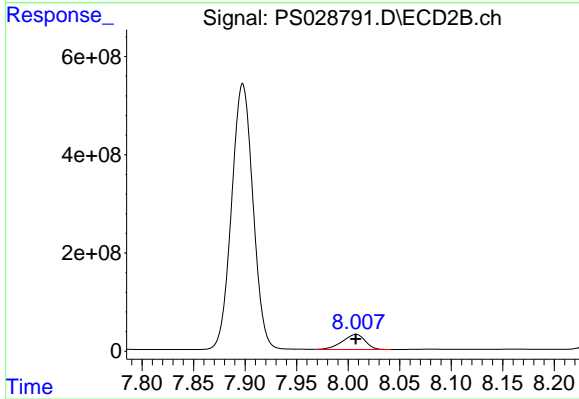
#5 DICAMBA

R.T.: 7.898 min
 Delta R.T.: 0.000 min
 Response: 7820821741
 Conc: 1405.32 ng/ml



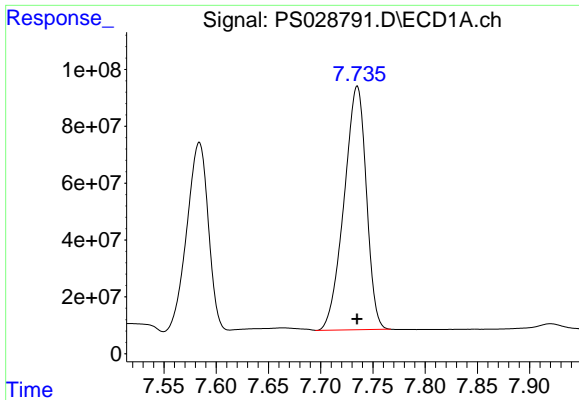
#6 MCP

R.T.: 7.584 min
 Delta R.T.: 0.000 min
 Response: 952442567
 Conc: 144.21 ug/ml



#6 MCP

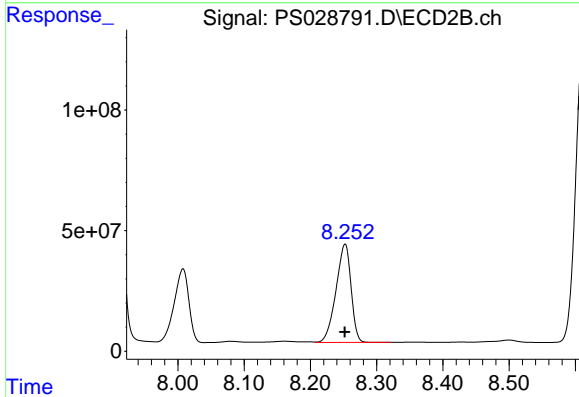
R.T.: 8.007 min
 Delta R.T.: 0.000 min
 Response: 470469621
 Conc: 141.02 ug/ml



#7 MCPA

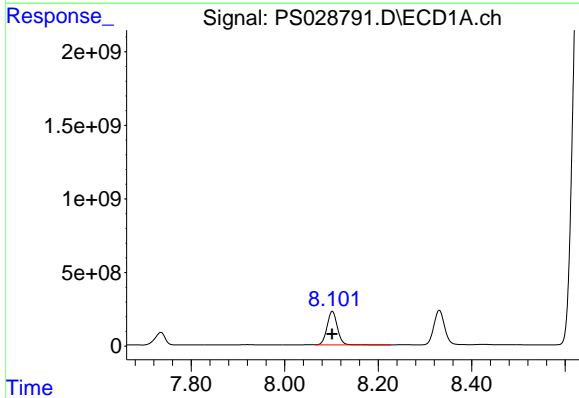
R.T.: 7.735 min
 Delta R.T.: 0.000 min
 Response: 1270107710
 Conc: 140.55 ug/ml

Instrument :
 ECD_S
 ClientSampleId :
 HSTDICC1500



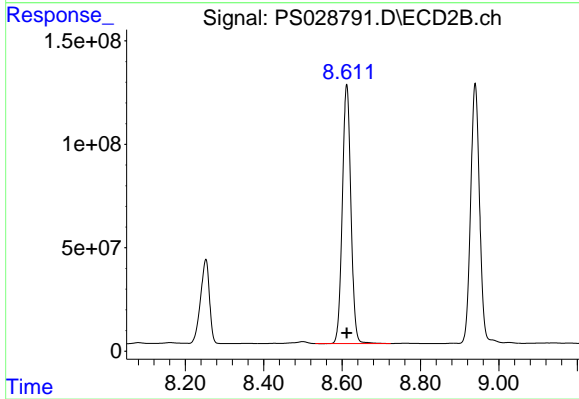
#7 MCPA

R.T.: 8.252 min
 Delta R.T.: 0.000 min
 Response: 643338244
 Conc: 138.27 ug/ml



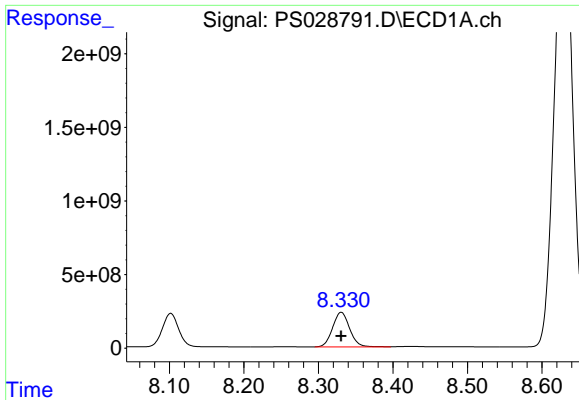
#8 DICHLORPROP

R.T.: 8.102 min
 Delta R.T.: 0.000 min
 Response: 3474411488
 Conc: 1364.61 ng/ml



#8 DICHLORPROP

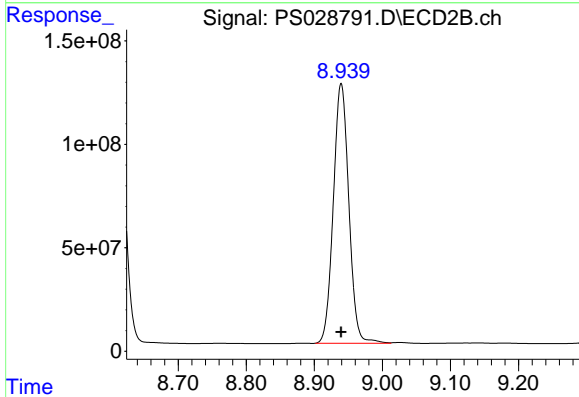
R.T.: 8.612 min
 Delta R.T.: 0.000 min
 Response: 1898968431
 Conc: 1388.51 ng/ml



#9 2,4-D

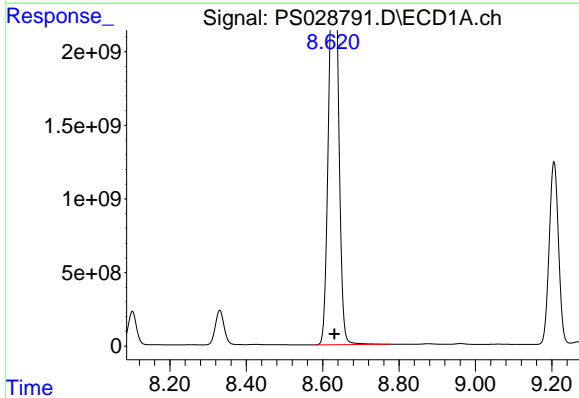
R.T.: 8.331 min
 Delta R.T.: 0.000 min
 Response: 3718255839
 Conc: 1357.15 ng/ml

Instrument :
 ECD_S
 ClientSampleId :
 HSTDICC1500



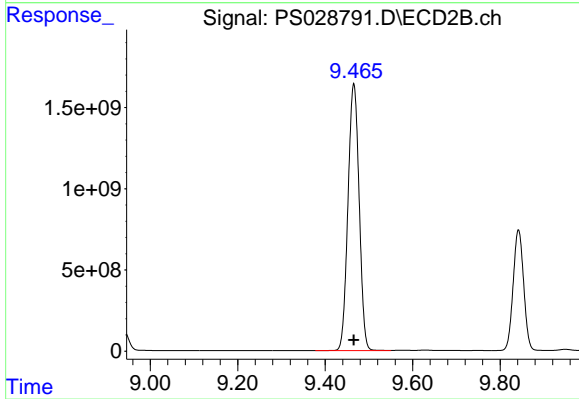
#9 2,4-D

R.T.: 8.940 min
 Delta R.T.: 0.000 min
 Response: 1988447209
 Conc: 1389.05 ng/ml



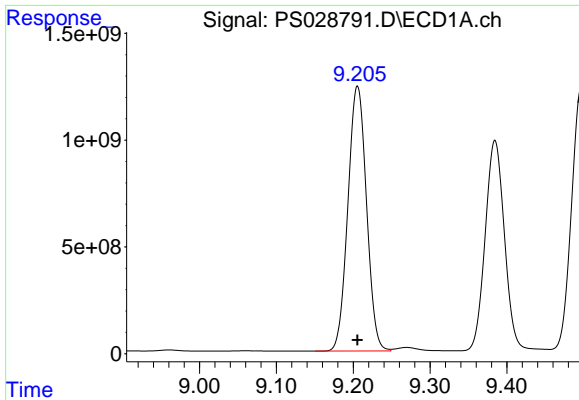
#10 Pentachlorophenol

R.T.: 8.631 min
 Delta R.T.: 0.000 min
 Response: 45093759991
 Conc: 1253.15 ng/ml



#10 Pentachlorophenol

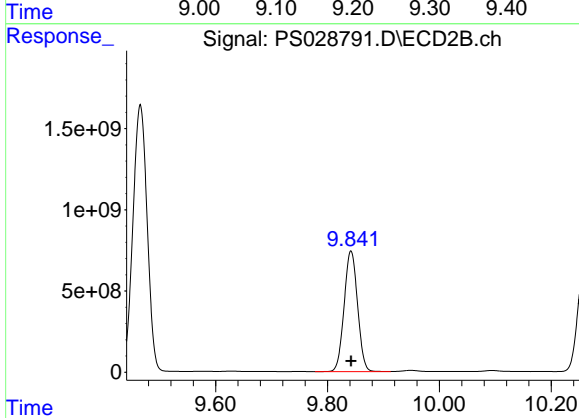
R.T.: 9.465 min
 Delta R.T.: 0.000 min
 Response: 29077732626
 Conc: 1364.14 ng/ml



#11 2,4,5-TP (SILVEX)

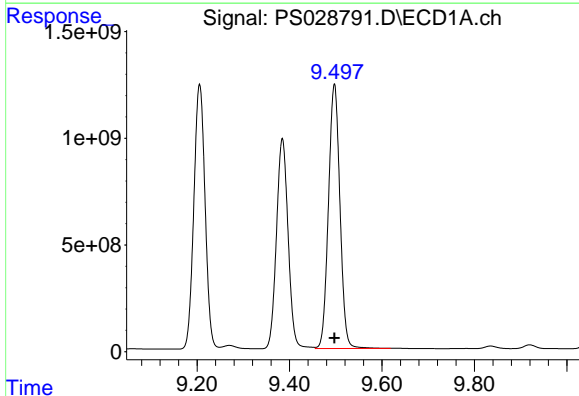
R.T.: 9.206 min
 Delta R.T.: 0.000 min
 Response: 20859775932
 Conc: 1370.56 ng/ml

Instrument :
 ECD_S
 ClientSampleId :
 HSTDICC1500



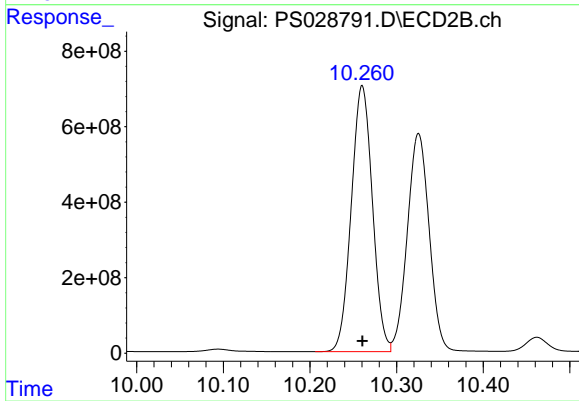
#11 2,4,5-TP (SILVEX)

R.T.: 9.842 min
 Delta R.T.: 0.000 min
 Response: 12378220785
 Conc: 1391.10 ng/ml



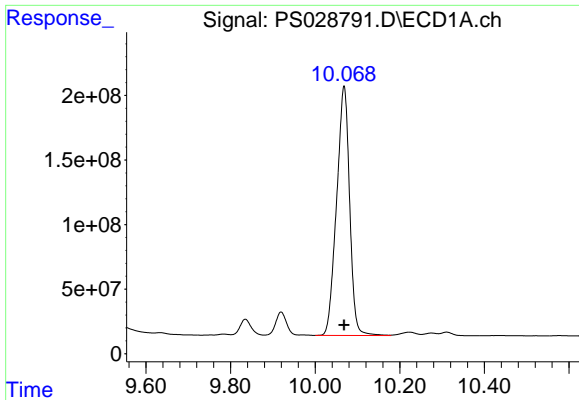
#12 2,4,5-T

R.T.: 9.497 min
 Delta R.T.: 0.000 min
 Response: 21373941933
 Conc: 1363.71 ng/ml



#12 2,4,5-T

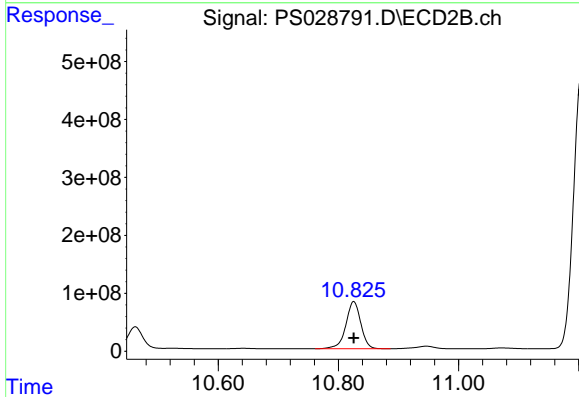
R.T.: 10.260 min
 Delta R.T.: 0.000 min
 Response: 11941494906
 Conc: 1390.61 ng/ml



#13 2,4-DB

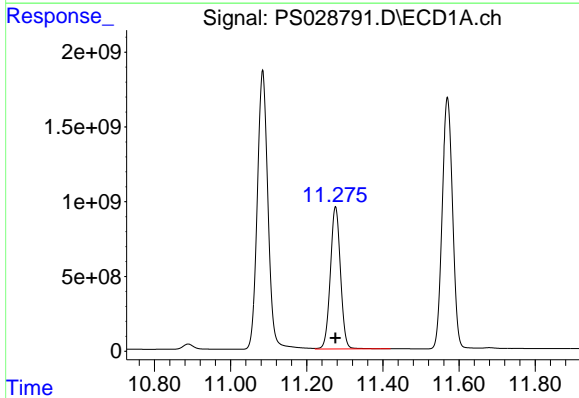
R.T.: 10.068 min
 Delta R.T.: 0.000 min
 Response: 4130041812
 Conc: 1392.61 ng/ml

Instrument :
 ECD_S
 ClientSampleId :
 HSTDICC1500



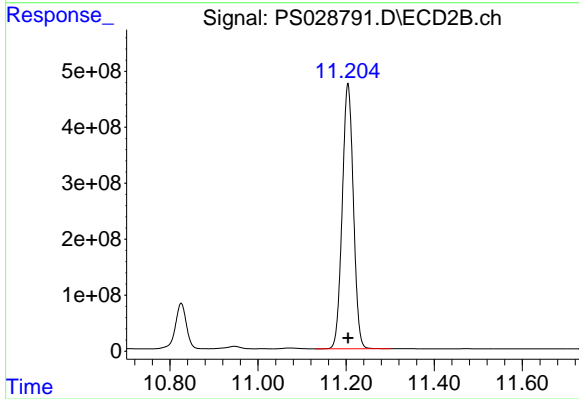
#13 2,4-DB

R.T.: 10.826 min
 Delta R.T.: 0.000 min
 Response: 1402847422
 Conc: 1420.80 ng/ml



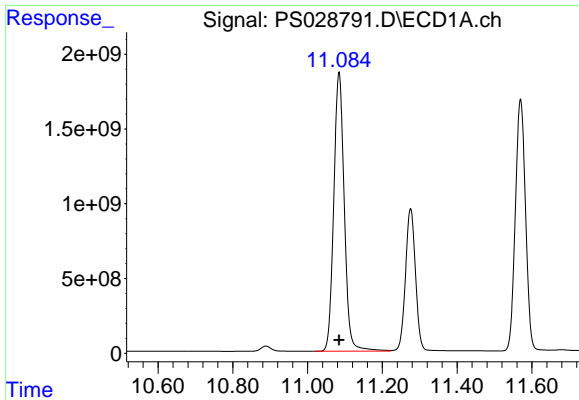
#14 DINOSEB

R.T.: 11.276 min
 Delta R.T.: 0.000 min
 Response: 17617474887
 Conc: 1356.70 ng/ml



#14 DINOSEB

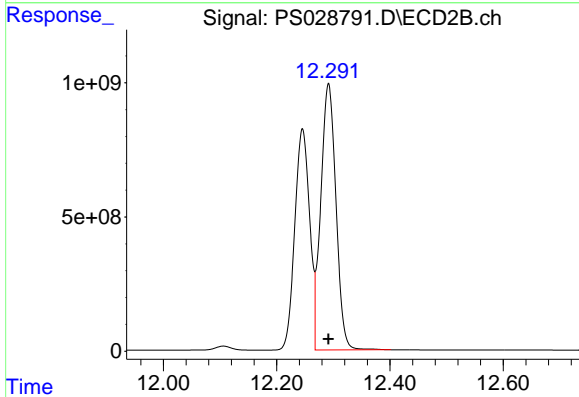
R.T.: 11.204 min
 Delta R.T.: 0.000 min
 Response: 8297462357
 Conc: 1379.05 ng/ml



#15 Picloram

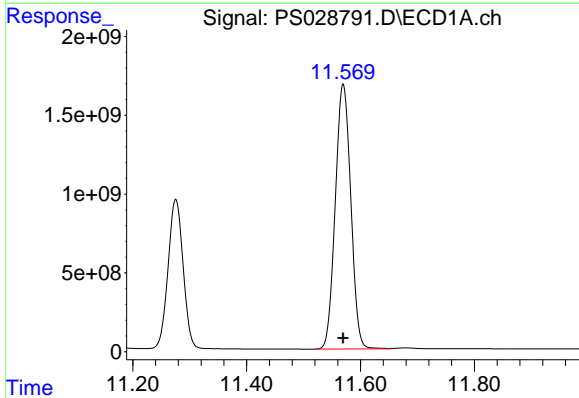
R.T.: 11.084 min
 Delta R.T.: 0.000 min
 Response: 36367254236
 Conc: 1382.69 ng/ml

Instrument :
 ECD_S
 ClientSampleId :
 HSTDICC1500



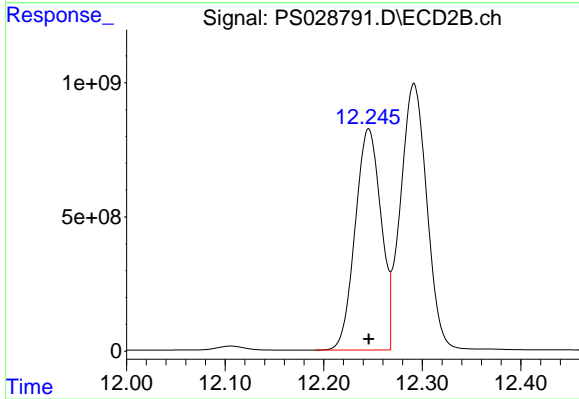
#15 Picloram

R.T.: 12.292 min
 Delta R.T.: 0.000 min
 Response: 18444305786
 Conc: 1413.05 ng/ml



#16 DCPA

R.T.: 11.570 min
 Delta R.T.: 0.000 min
 Response: 31790485497
 Conc: 1372.95 ng/ml



#16 DCPA

R.T.: 12.246 min
 Delta R.T.: 0.000 min
 Response: 15026504222
 Conc: 1404.95 ng/ml