

Data Path : Z:\pestpcbsrv\HPCHEM1\ECD_S\Data\PS122324\
 Data File : PS028803.D
 Signal(s) : Signal #1: ECD1A.ch Signal #2: ECD2B.ch
 Acq On : 23 Dec 2024 17:46
 Operator : AR\AJ
 Sample : P5306-05
 Misc :
 ALS Vial : 15 Sample Multiplier: 1

Instrument :
 ECD_S
 ClientSampleId :
 OU4-VSL-09-121224

Integration File signal 1: autoint1.e
 Integration File signal 2: autoint2.e
 Quant Time: Dec 24 01:55:42 2024
 Quant Method : Z:\pestpcbsrv\HPCHEM1\ECD_S\Method\PS122324.M
 Quant Title : 8080.M
 QLast Update : Mon Dec 23 13:44:25 2024
 Response via : Initial Calibration
 Integrator: ChemStation

Volume Inj. : 1 µl
 Signal #1 Phase : ZB-MR1 Signal #2 Phase: ZB-MR2
 Signal #1 Info : 30M x 0.32mm x0.5 Signal #2 Info : 30M x 0.32mm x 0.25µm

	Compound	RT#1	RT#2	Resp#1	Resp#2	ng/ml	ng/ml

System Monitoring Compounds							
4) S	2,4-DCAA	7.207	7.698	793.7E6	343.5E6	350.891	305.148
Target Compounds							
2) T	3,5-DICHL...	6.366	0.000	7250609	0	2.200	N.D. #
3) T	4-Nitroph...	7.013	7.236	84838817	1169562	56.482	1.398 #
5) T	DICAMBA	7.389	7.908	2509147	5310502	<MDL	<MDL #
6) T	MCP	7.566	8.019	2635593	9862061	<MDL	3.018 #
7) T	MCPA	7.744	8.247	9537955	5147985	1.088	1.111
8) T	DICHLORPROP	8.106	8.579f	8354470	78353644	3.149	56.792 #
9) T	2,4-D	8.343	0.000	34462078	0	12.094	N.D. #
10) T	Pentachlo...	8.623	9.460	10065128	17159488	<MDL	<MDL #
11) T	2,4,5-TP ...	9.161f	9.872f	4536171	35473046	<MDL	3.949 #
12) T	2,4,5-T	9.504	10.236	14850962	109.5E6	<MDL	12.578 #
13) T	2,4-DB	10.047	10.849	223.4E6	2824362	71.556	2.908 #
14) T	DINOSEB	11.277	11.207	302.9E6	22538303	22.537	3.659 #
15) T	Picloram	11.082	12.292	319.6E6	3165179	11.919	<MDL #
16) T	DCPA	0.000	12.292f	0	3165179	N.D.	<MDL

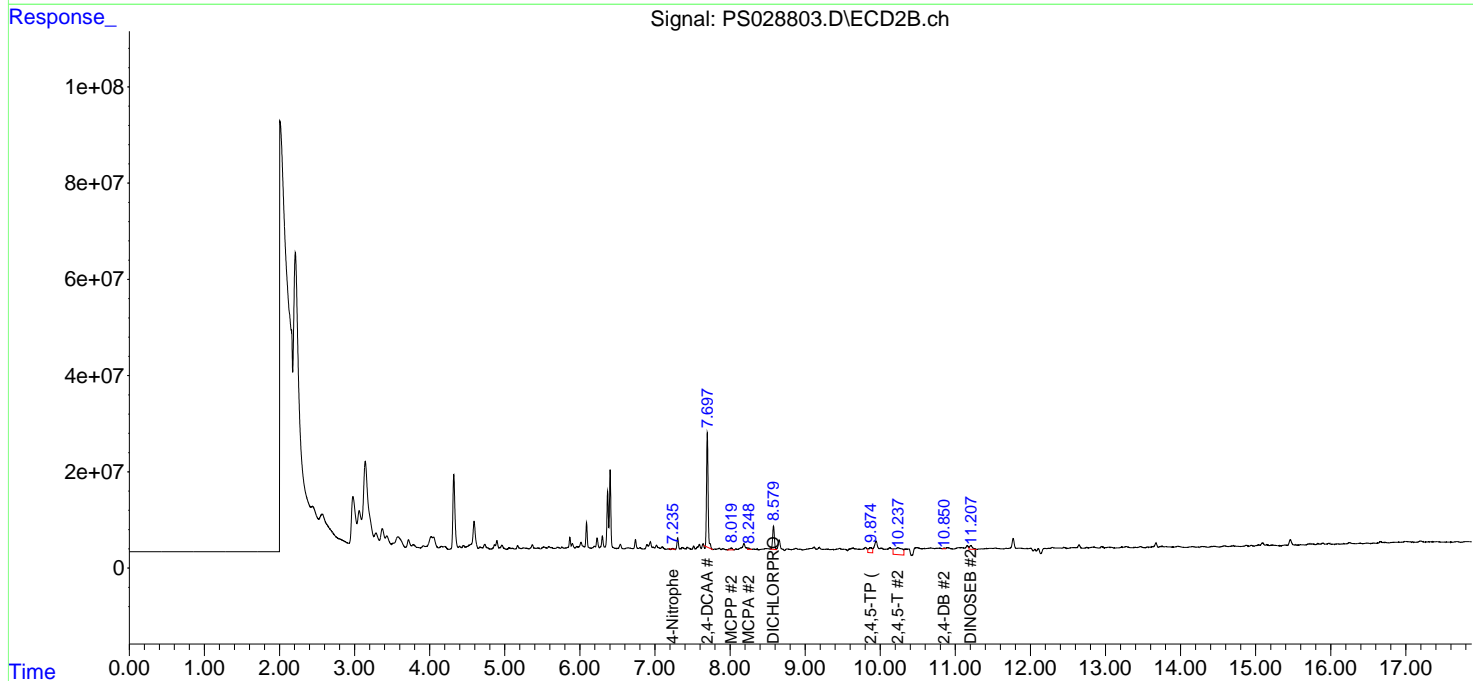
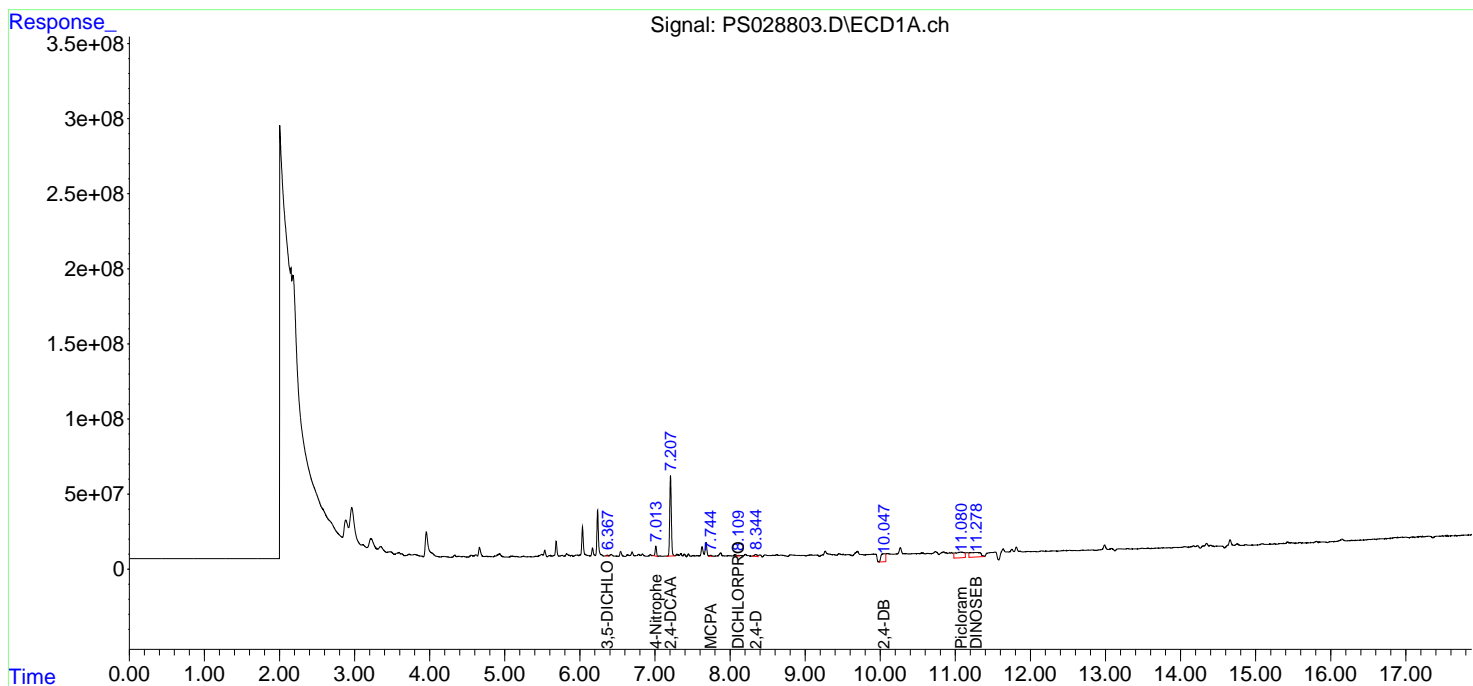
(f)=RT Delta > 1/2 Window (#)=Amounts differ by > 25% (m)=manual int.

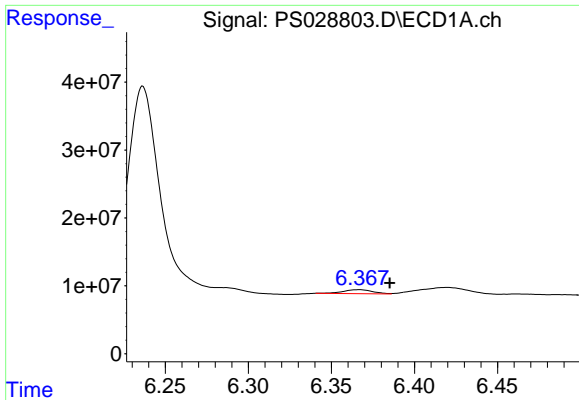
Data Path : Z:\pestpcbsrv\HPCHEM1\ECD_S\Data\PS122324\
 Data File : PS028803.D
 Signal(s) : Signal #1: ECD1A.ch Signal #2: ECD2B.ch
 Acq On : 23 Dec 2024 17:46
 Operator : AR\AJ
 Sample : P5306-05
 Misc :
 ALS Vial : 15 Sample Multiplier: 1

Instrument :
 ECD_S
ClientSampleId :
 OU4-VSL-09-121224

Integration File signal 1: autoint1.e
 Integration File signal 2: autoint2.e
 Quant Time: Dec 24 01:55:42 2024
 Quant Method : Z:\pestpcbsrv\HPCHEM1\ECD_S\Method\PS122324.M
 Quant Title : 8080.M
 QLast Update : Mon Dec 23 13:44:25 2024
 Response via : Initial Calibration
 Integrator: ChemStation

Volume Inj. : 1 µl
 Signal #1 Phase : ZB-MR1 Signal #2 Phase: ZB-MR2
 Signal #1 Info : 30M x 0.32mm x0.5 Signal #2 Info : 30M x 0.32mm x 0.25µm

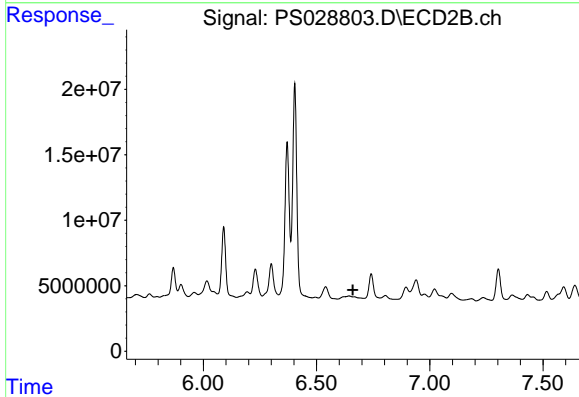




#2 3,5-DICHLORO BENZOIC ACID

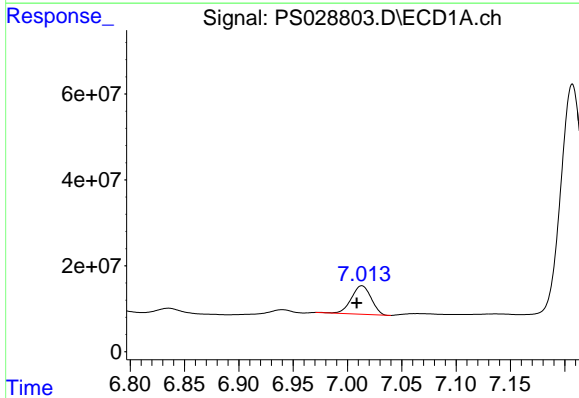
R.T.: 6.366 min
 Delta R.T.: -0.019 min
 Response: 7250609
 Conc: 2.20 ng/ml

Instrument :
 ECD_S
 ClientSampleId :
 OU4-VSL-09-121224



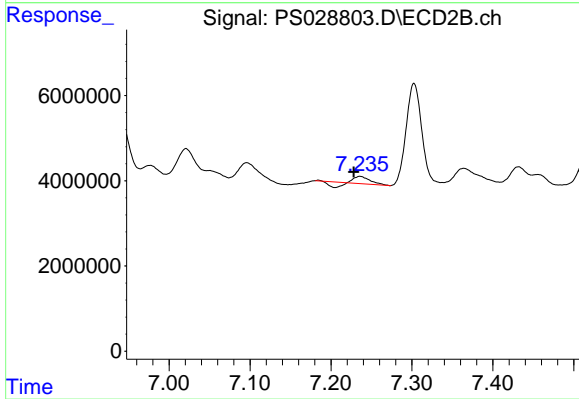
#2 3,5-DICHLORO BENZOIC ACID

R.T.: 0.000 min
 Exp R.T. : 6.661 min
 Response: 0
 Conc: N.D.



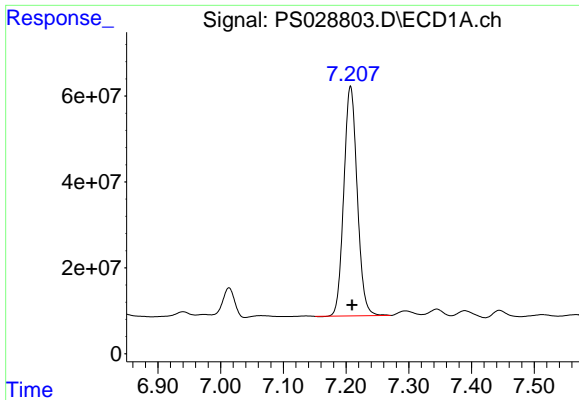
#3 4-Nitrophenol

R.T.: 7.013 min
 Delta R.T.: 0.005 min
 Response: 84838817
 Conc: 56.48 ng/ml



#3 4-Nitrophenol

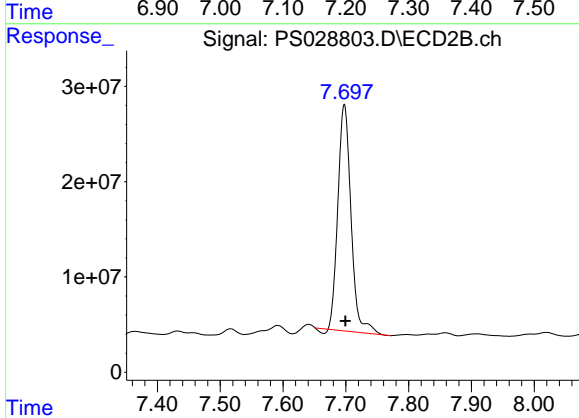
R.T.: 7.236 min
 Delta R.T.: 0.008 min
 Response: 1169562
 Conc: 1.40 ng/ml



#4 2,4-DCAA

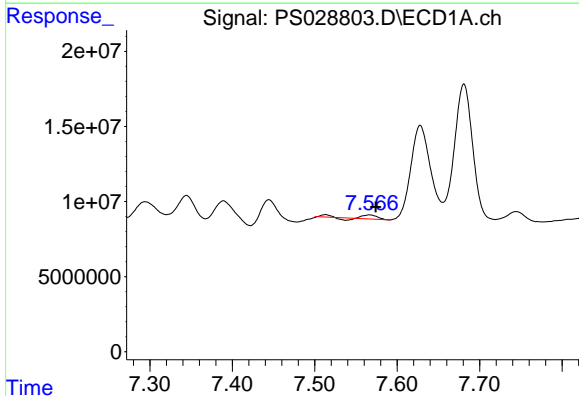
R.T.: 7.207 min
 Delta R.T.: -0.003 min
 Response: 793723958
 Conc: 350.89 ng/ml

Instrument :
 ECD_S
 ClientSampleId :
 OU4-VSL-09-121224



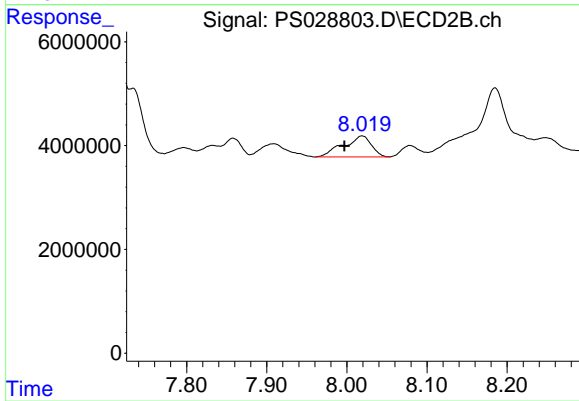
#4 2,4-DCAA

R.T.: 7.698 min
 Delta R.T.: -0.002 min
 Response: 343455571
 Conc: 305.15 ng/ml



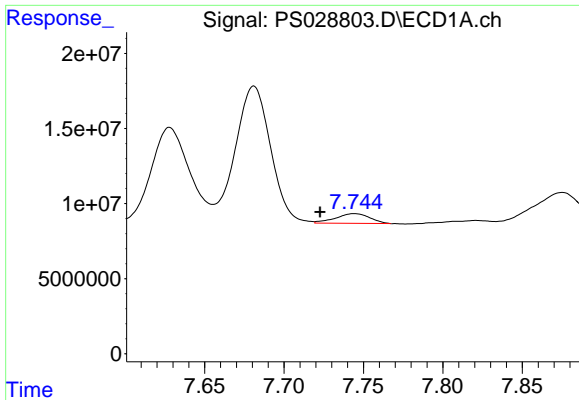
#6 MCPP

R.T.: 7.566 min
 Delta R.T.: -0.008 min
 Response: 2635593
 Conc: N.D.



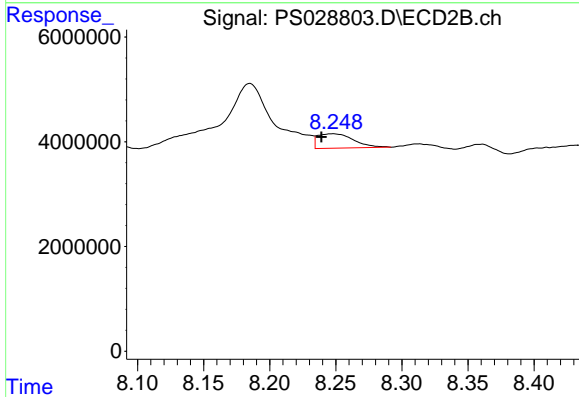
#6 MCPP

R.T.: 8.019 min
 Delta R.T.: 0.022 min
 Response: 9862061
 Conc: 3.02 ug/ml

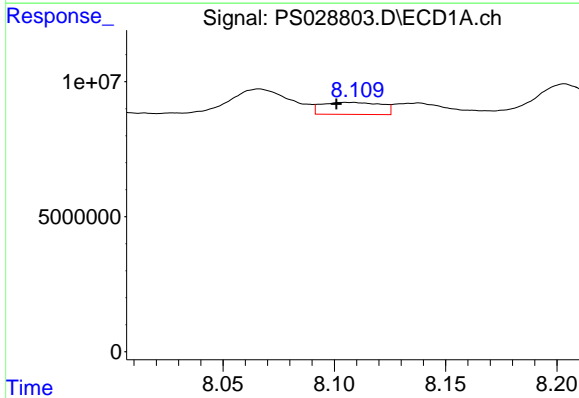


#7 MCPA
 R.T.: 7.744 min
 Delta R.T.: 0.022 min
 Response: 9537955
 Conc: 1.09 ug/ml

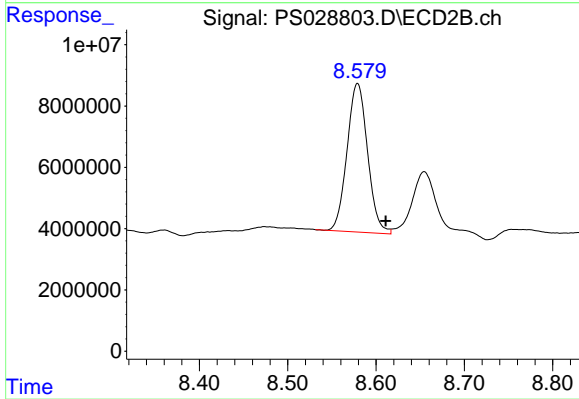
Instrument :
 ECD_S
 ClientSampleId :
 OU4-VSL-09-121224



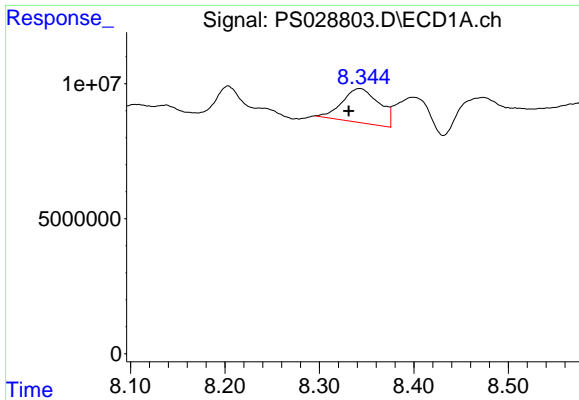
#7 MCPA
 R.T.: 8.247 min
 Delta R.T.: 0.008 min
 Response: 5147985
 Conc: 1.11 ug/ml



#8 DICHLORPROP
 R.T.: 8.106 min
 Delta R.T.: 0.005 min
 Response: 8354470
 Conc: 3.15 ng/ml



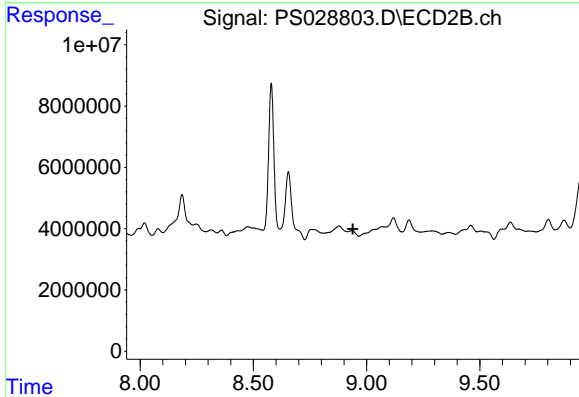
#8 DICHLORPROP
 R.T.: 8.579 min
 Delta R.T.: -0.032 min
 Response: 78353644
 Conc: 56.79 ng/ml



#9 2,4-D

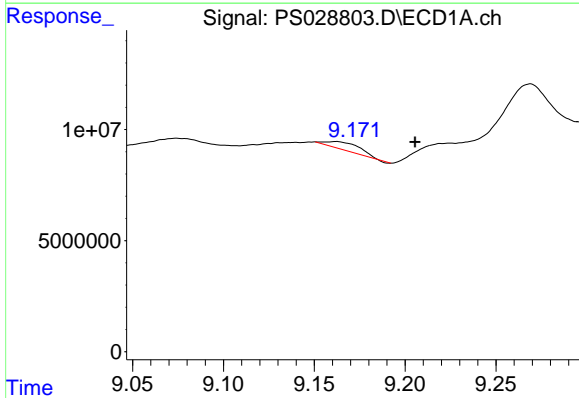
R.T.: 8.343 min
 Delta R.T.: 0.011 min
 Response: 34462078
 Conc: 12.09 ng/ml

Instrument :
 ECD_S
 ClientSampleId :
 OU4-VSL-09-121224



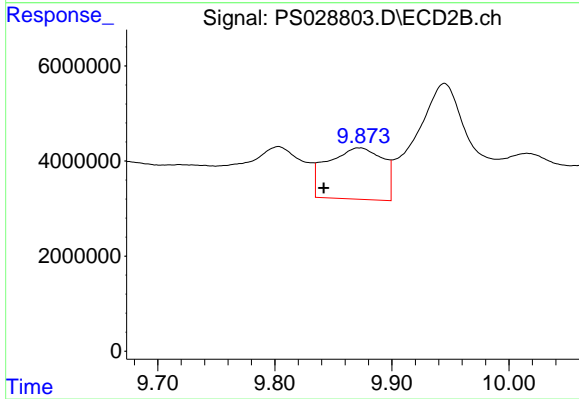
#9 2,4-D

R.T.: 0.000 min
 Exp R.T. : 8.939 min
 Response: 0
 Conc: N.D.



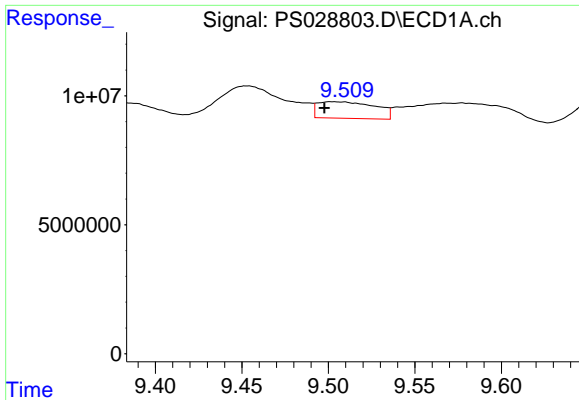
#11 2,4,5-TP (SILVEX)

R.T.: 9.161 min
 Delta R.T.: -0.045 min
 Response: 4536171
 Conc: N.D.



#11 2,4,5-TP (SILVEX)

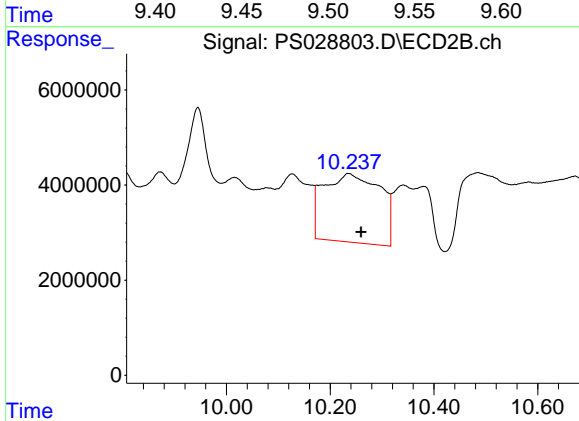
R.T.: 9.872 min
 Delta R.T.: 0.031 min
 Response: 35473046
 Conc: 3.95 ng/ml



#12 2,4,5-T

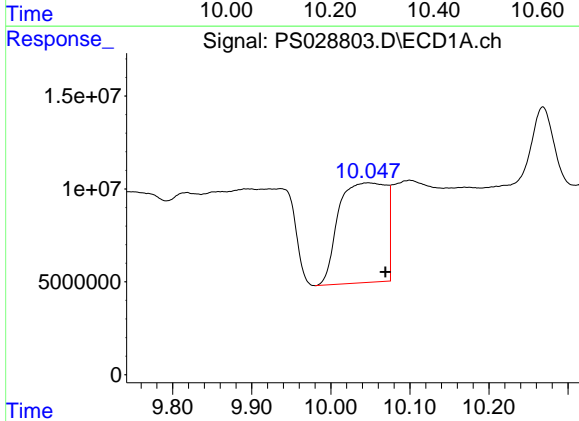
R.T.: 9.504 min
 Delta R.T.: 0.006 min
 Response: 14850962
 Conc: N.D.

Instrument :
 ECD_S
 ClientSampleId :
 OU4-VSL-09-121224



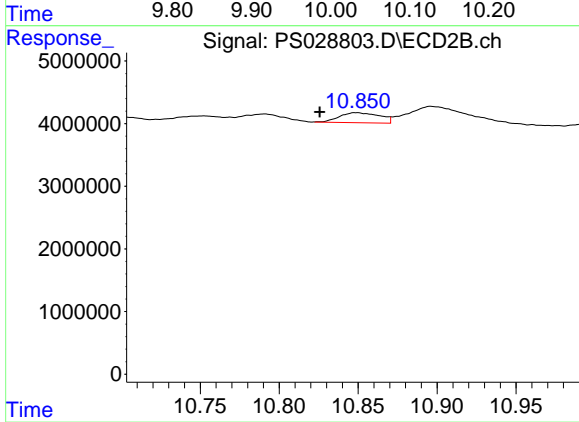
#12 2,4,5-T

R.T.: 10.236 min
 Delta R.T.: -0.024 min
 Response: 109544710
 Conc: 12.58 ng/ml



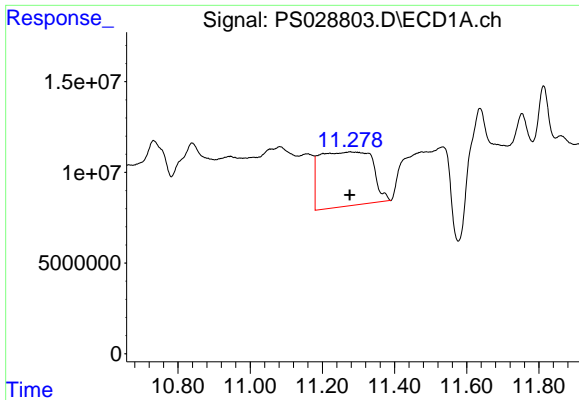
#13 2,4-DB

R.T.: 10.047 min
 Delta R.T.: -0.022 min
 Response: 223368443
 Conc: 71.56 ng/ml



#13 2,4-DB

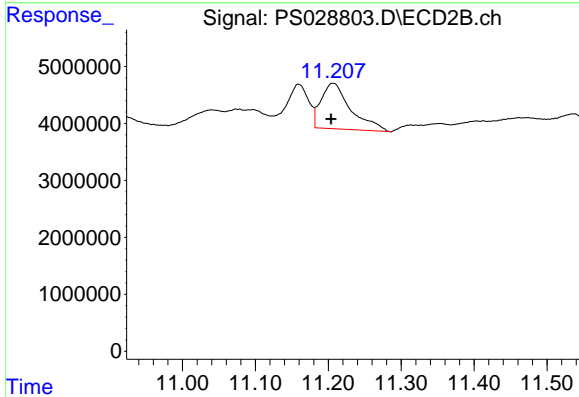
R.T.: 10.849 min
 Delta R.T.: 0.024 min
 Response: 2824362
 Conc: 2.91 ng/ml



#14 DINOSEB

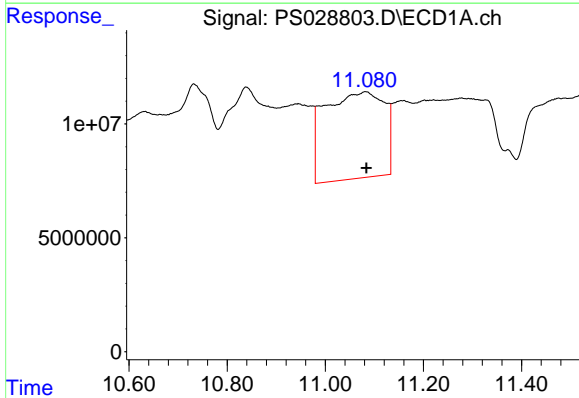
R.T.: 11.277 min
 Delta R.T.: 0.000 min
 Response: 302937388
 Conc: 22.54 ng/ml

Instrument :
 ECD_S
 ClientSampleId :
 OU4-VSL-09-121224



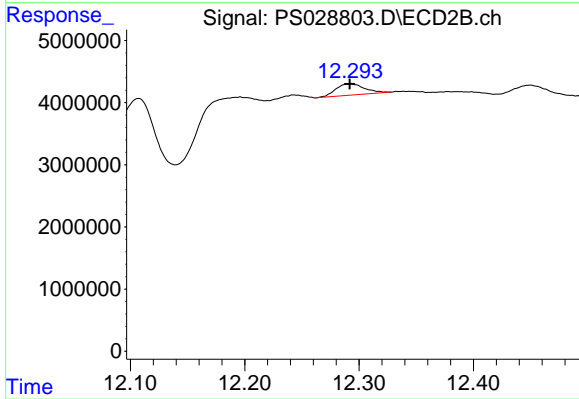
#14 DINOSEB

R.T.: 11.207 min
 Delta R.T.: 0.003 min
 Response: 22538303
 Conc: 3.66 ng/ml



#15 Picloram

R.T.: 11.082 min
 Delta R.T.: -0.002 min
 Response: 319581810
 Conc: 11.92 ng/ml



#15 Picloram

R.T.: 12.292 min
 Delta R.T.: 0.000 min
 Response: 3165179
 Conc: N.D.