

Data Path : Z:\pestpcbsrv\HPCHEM1\ECD\_S\Data\PS122324\  
 Data File : PS028808.D  
 Signal(s) : Signal #1: ECD1A.ch Signal #2: ECD2B.ch  
 Acq On : 23 Dec 2024 19:45  
 Operator : AR\AJ  
 Sample : P5306-15MS  
 Misc :  
 ALS Vial : 20 Sample Multiplier: 1

Instrument :  
 ECD\_S  
 ClientSampleId :  
 OU4-VSL-14-121224MS

Integration File signal 1: autoint1.e  
 Integration File signal 2: autoint2.e  
 Quant Time: Dec 24 01:58:13 2024  
 Quant Method : Z:\pestpcbsrv\HPCHEM1\ECD\_S\Method\PS122324.M  
 Quant Title : 8080.M  
 QLast Update : Mon Dec 23 13:44:25 2024  
 Response via : Initial Calibration  
 Integrator: ChemStation

Volume Inj. : 1 µl  
 Signal #1 Phase : ZB-MR2 Signal #2 Phase: ZB-MR2  
 Signal #1 Info : 30M x 0.32mm x0.5 Signal #2 Info : 30M x 0.32mm x 0.25µm

Compound	RT#1	RT#2	Resp#1	Resp#2	ng/ml	ng/ml
-----						
System Monitoring Compounds						
4) S 2,4-DCAA	7.208	7.698	1460.7E6	589.2E6	645.765	523.520
Target Compounds						
1) T Dalapon	2.620	2.675	1010.0E6	1385.8E6	358.568	703.940 #
2) T 3,5-DICHL...	6.383	6.659	1883.8E6	828.0E6	571.691	499.531
3) T 4-Nitroph...	7.007	7.226	533.1E6	255.7E6	354.883	305.593
5) T DICAMBA	7.393	7.896	4360.4E6	2801.6E6	442.207	510.323
6) T MCPP	7.574	7.998	309.3E6	148.8E6	49.676	45.541
7) T MCPA	7.723	8.240	434.2E6	261.0E6	49.530	56.338
8) T DICHLORPROP	8.098	8.609	1331.2E6	705.2E6	501.747	511.106
9) T 2,4-D	8.328	8.937	1676.3E6	806.0E6	588.259	558.536
10) T Pentachlo...	8.626	9.463	18274.2E6	9157.8E6	467.766	420.107
11) T 2,4,5-TP ...	9.203	9.840	8083.3E6	4453.8E6	514.557	495.776
12) T 2,4,5-T	9.493	10.257	8375.7E6	4174.2E6	514.820	479.283
13) T 2,4-DB	10.067	10.823	1488.9E6	376.4E6	476.953	387.622
14) T DINOSEB	11.271	11.202	916.3E6	241.7E6	68.166	39.248 #
15) T Picloram	11.080	12.288	12003.2E6	5097.1E6	447.668	397.003
16) T DCPA	11.563	12.242	9463.9E6	5455.2E6	393.492	507.718 #
-----						

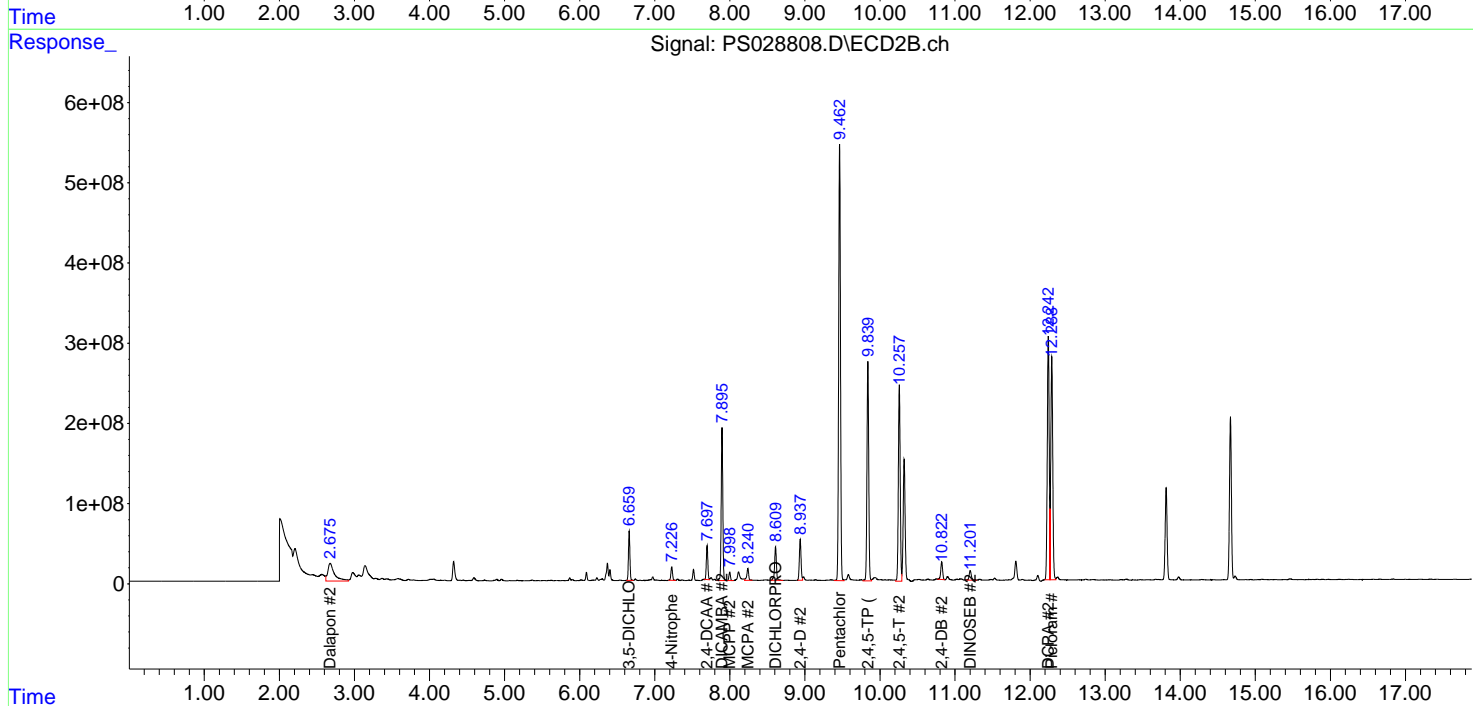
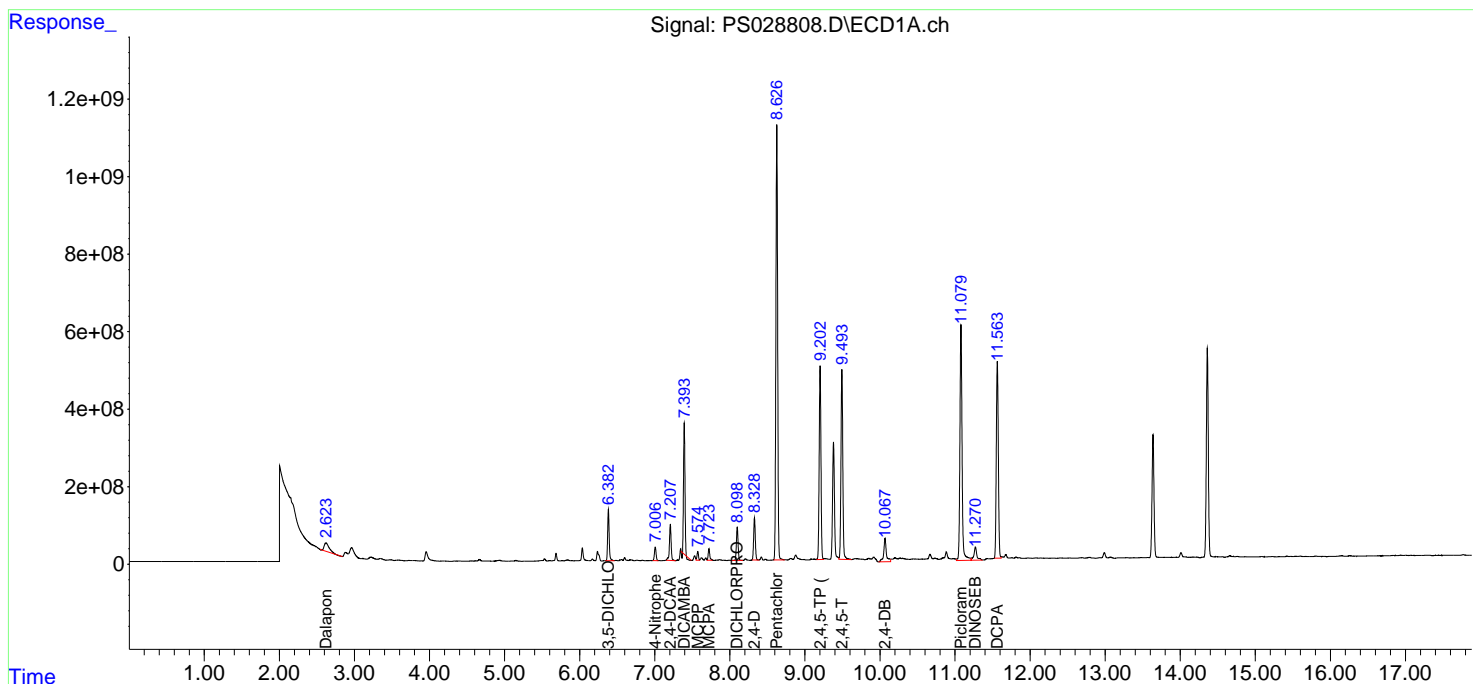
(f)=RT Delta > 1/2 Window (#)=Amounts differ by > 25% (m)=manual int.

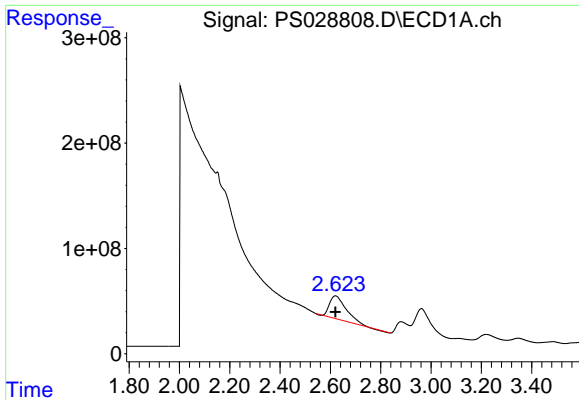
Data Path : Z:\pestpcbsrv\HPCHEM1\ECD\_S\Data\PS122324\  
 Data File : PS028808.D  
 Signal(s) : Signal #1: ECD1A.ch Signal #2: ECD2B.ch  
 Acq On : 23 Dec 2024 19:45  
 Operator : AR\AJ  
 Sample : P5306-15MS  
 Misc :  
 ALS Vial : 20 Sample Multiplier: 1

**Instrument :**  
 ECD\_S  
**ClientSampleId :**  
 OU4-VSL-14-121224MS

Integration File signal 1: autoint1.e  
 Integration File signal 2: autoint2.e  
 Quant Time: Dec 24 01:58:13 2024  
 Quant Method : Z:\pestpcbsrv\HPCHEM1\ECD\_S\Method\PS122324.M  
 Quant Title : 8080.M  
 QLast Update : Mon Dec 23 13:44:25 2024  
 Response via : Initial Calibration  
 Integrator: ChemStation

Volume Inj. : 1 µl  
 Signal #1 Phase : ZB-MR1 Signal #2 Phase: ZB-MR2  
 Signal #1 Info : 30M x 0.32mm x0.5 Signal #2 Info : 30M x 0.32mm x 0.25µm

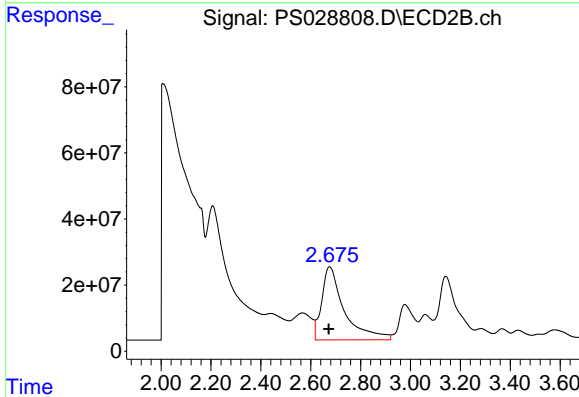




#1 Dalapon

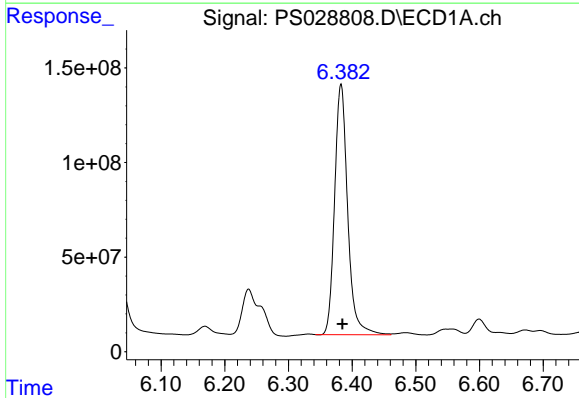
R.T.: 2.620 min  
 Delta R.T.: 0.000 min  
 Response: 1009961441  
 Conc: 358.57 ng/ml

Instrument :  
 ECD\_S  
 ClientSampleId :  
 OU4-VSL-14-121224MS



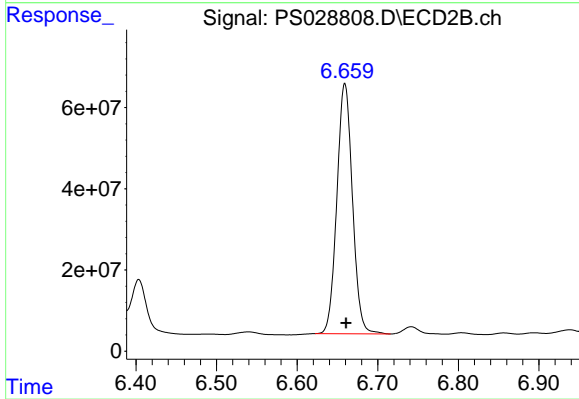
#1 Dalapon

R.T.: 2.675 min  
 Delta R.T.: 0.003 min  
 Response: 1385777916  
 Conc: 703.94 ng/ml



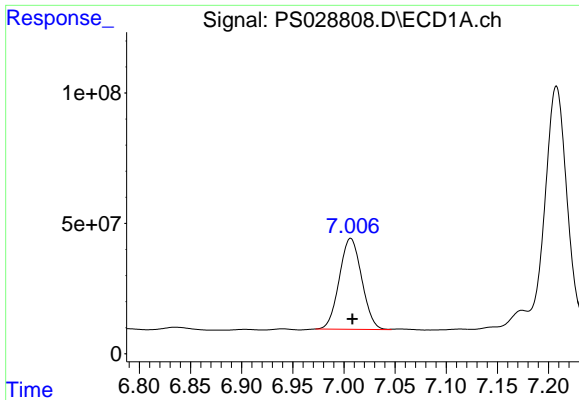
#2 3,5-DICHLOROBENZOIC ACID

R.T.: 6.383 min  
 Delta R.T.: -0.002 min  
 Response: 1883798002  
 Conc: 571.69 ng/ml



#2 3,5-DICHLOROBENZOIC ACID

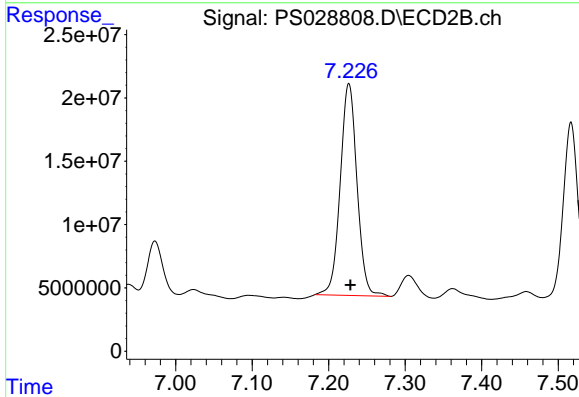
R.T.: 6.659 min  
 Delta R.T.: -0.002 min  
 Response: 828009164  
 Conc: 499.53 ng/ml



#3 4-Nitrophenol

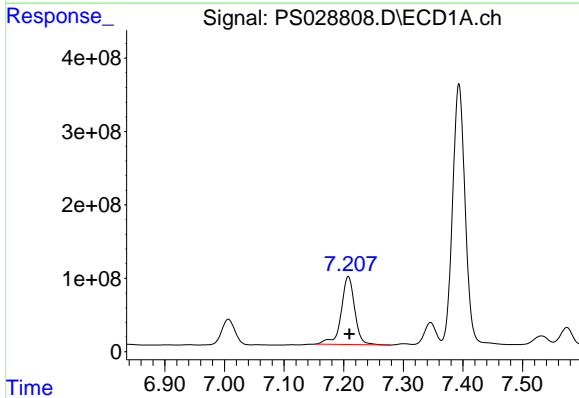
R.T.: 7.007 min  
 Delta R.T.: -0.002 min  
 Response: 533054626  
 Conc: 354.88 ng/ml

Instrument :  
 ECD\_S  
 ClientSampleId :  
 OU4-VSL-14-121224MS



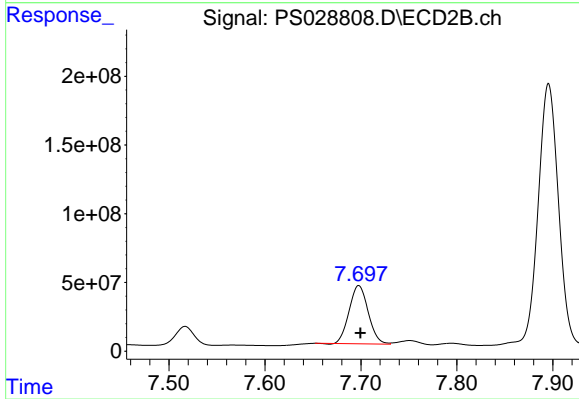
#3 4-Nitrophenol

R.T.: 7.226 min  
 Delta R.T.: -0.002 min  
 Response: 255748723  
 Conc: 305.59 ng/ml



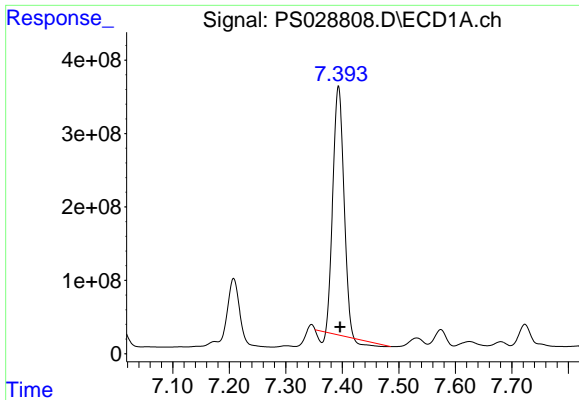
#4 2,4-DCAA

R.T.: 7.208 min  
 Delta R.T.: -0.002 min  
 Response: 1460737803  
 Conc: 645.77 ng/ml



#4 2,4-DCAA

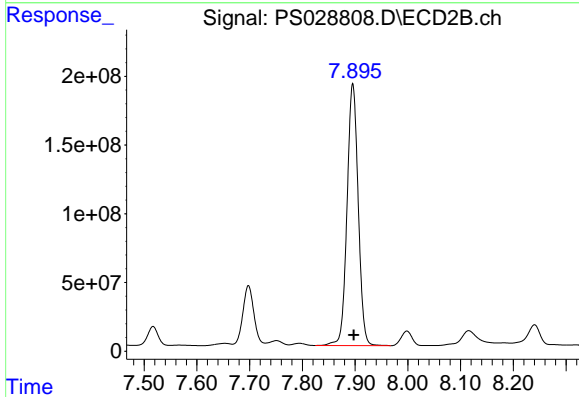
R.T.: 7.698 min  
 Delta R.T.: -0.002 min  
 Response: 589241273  
 Conc: 523.52 ng/ml



#5 DICAMBA

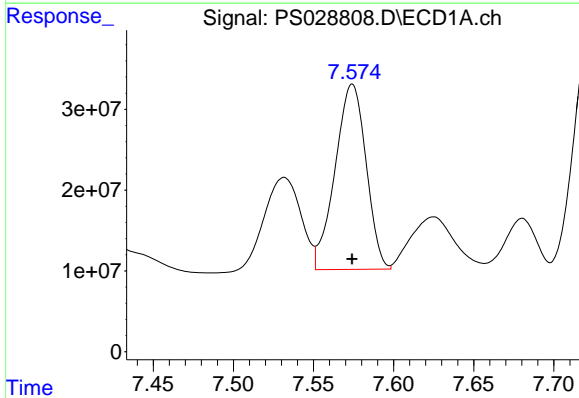
R.T.: 7.393 min  
 Delta R.T.: -0.003 min  
 Response: 4360444307  
 Conc: 442.21 ng/ml

Instrument :  
 ECD\_S  
 ClientSampleId :  
 OU4-VSL-14-121224MS



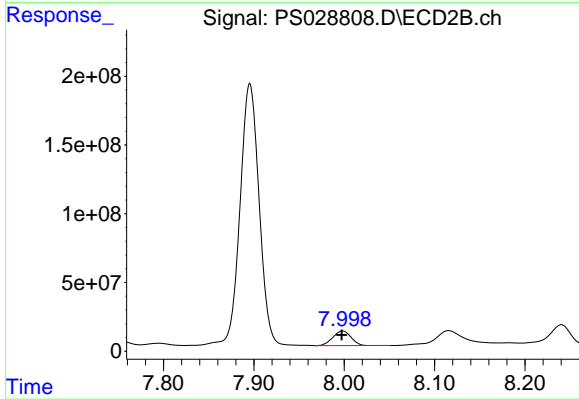
#5 DICAMBA

R.T.: 7.896 min  
 Delta R.T.: -0.002 min  
 Response: 2801605759  
 Conc: 510.32 ng/ml



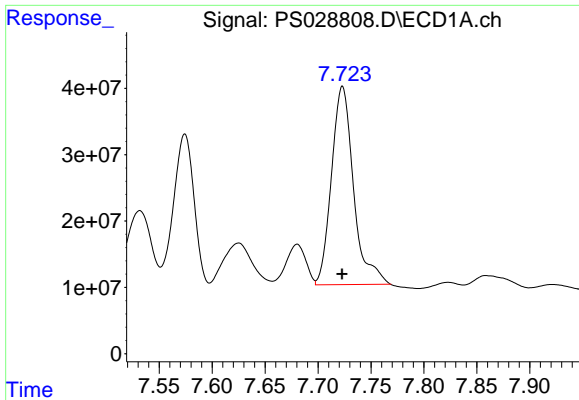
#6 MCP

R.T.: 7.574 min  
 Delta R.T.: 0.000 min  
 Response: 309341561  
 Conc: 49.68 ug/ml



#6 MCP

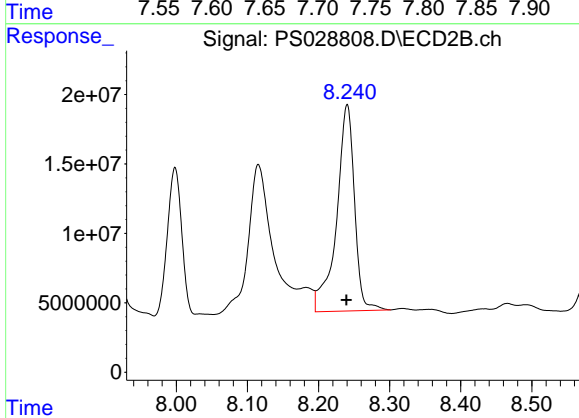
R.T.: 7.998 min  
 Delta R.T.: 0.000 min  
 Response: 148817797  
 Conc: 45.54 ug/ml



#7 MCPA

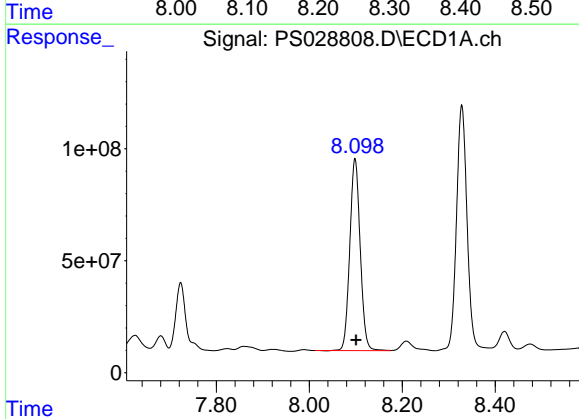
R.T.: 7.723 min  
 Delta R.T.: 0.000 min  
 Response: 434151623  
 Conc: 49.53 ug/ml

Instrument :  
 ECD\_S  
 ClientSampleId :  
 OU4-VSL-14-121224MS



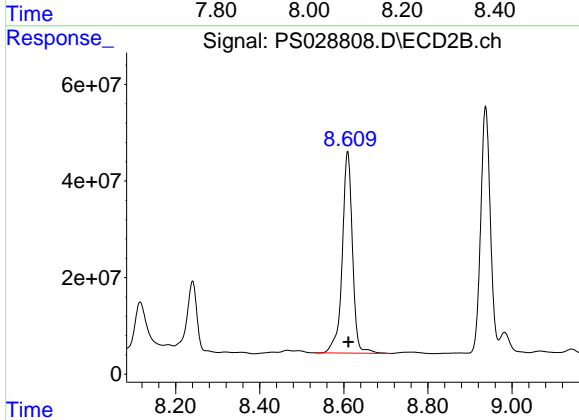
#7 MCPA

R.T.: 8.240 min  
 Delta R.T.: 0.001 min  
 Response: 261008164  
 Conc: 56.34 ug/ml



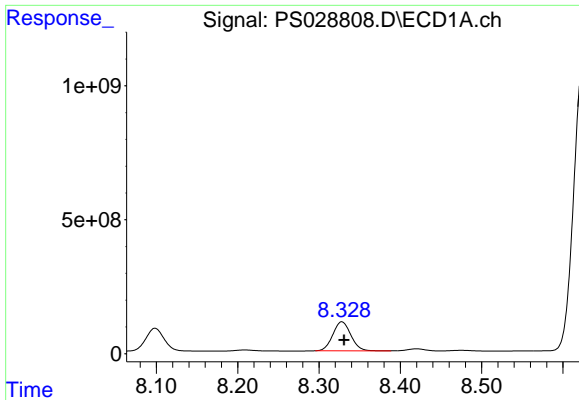
#8 DICHLORPROP

R.T.: 8.098 min  
 Delta R.T.: -0.003 min  
 Response: 1331224551  
 Conc: 501.75 ng/ml



#8 DICHLORPROP

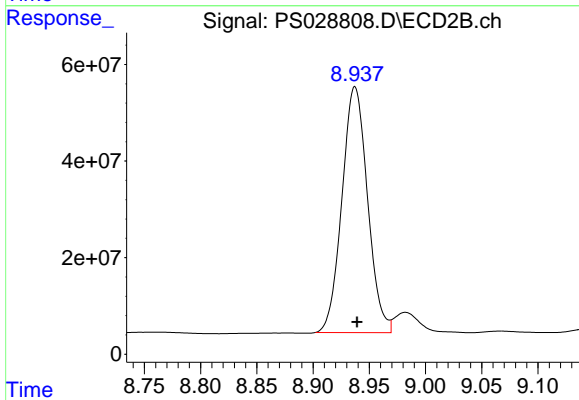
R.T.: 8.609 min  
 Delta R.T.: -0.002 min  
 Response: 705151692  
 Conc: 511.11 ng/ml



#9 2,4-D

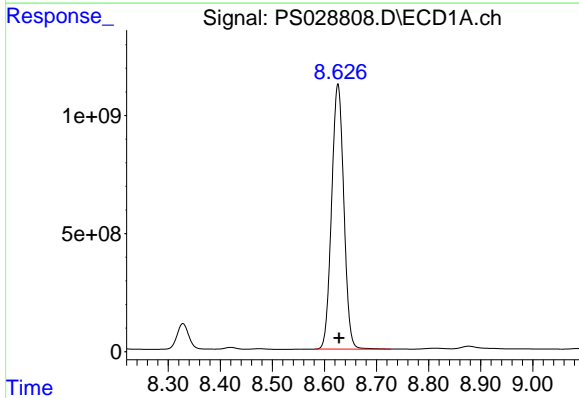
R.T.: 8.328 min  
 Delta R.T.: -0.003 min  
 Response: 1676263484  
 Conc: 588.26 ng/ml

Instrument :  
 ECD\_S  
 ClientSampleId :  
 OU4-VSL-14-121224MS



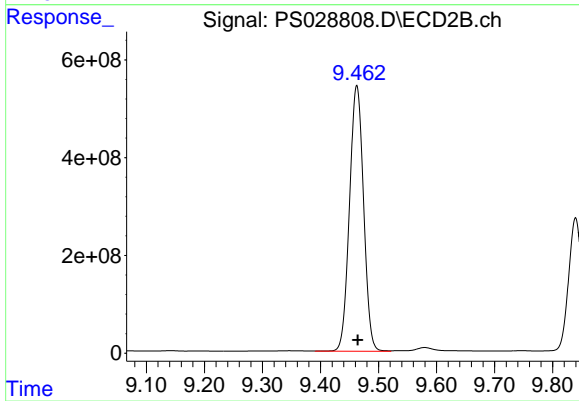
#9 2,4-D

R.T.: 8.937 min  
 Delta R.T.: -0.002 min  
 Response: 806049158  
 Conc: 558.54 ng/ml



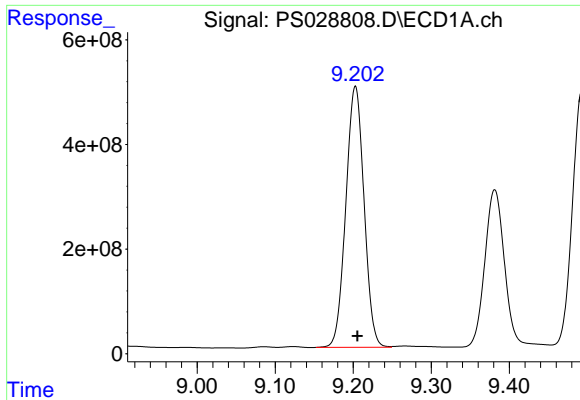
#10 Pentachlorophenol

R.T.: 8.626 min  
 Delta R.T.: -0.002 min  
 Response: 18274202171  
 Conc: 467.77 ng/ml



#10 Pentachlorophenol

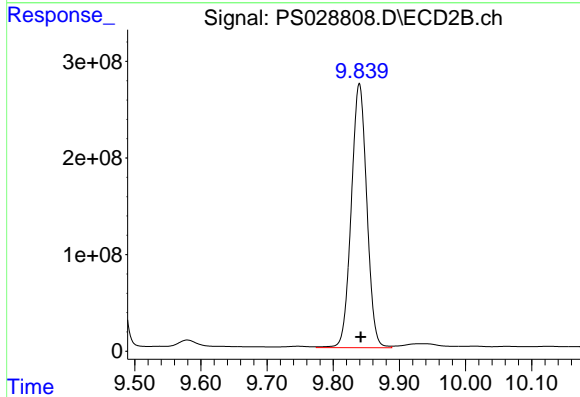
R.T.: 9.463 min  
 Delta R.T.: -0.002 min  
 Response: 9157793486  
 Conc: 420.11 ng/ml



#11 2,4,5-TP (SILVEX)

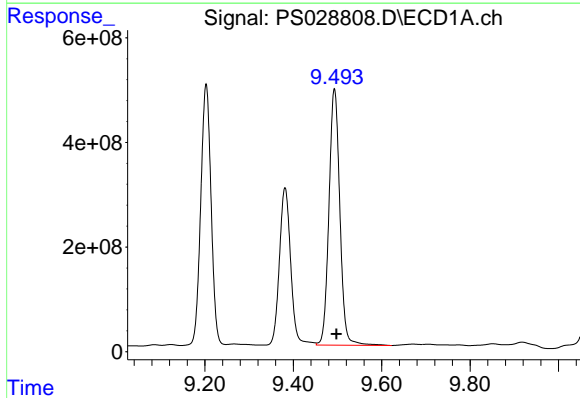
R.T.: 9.203 min  
 Delta R.T.: -0.003 min  
 Response: 8083347378  
 Conc: 514.56 ng/ml

Instrument :  
 ECD\_S  
 ClientSampleId :  
 OU4-VSL-14-121224MS



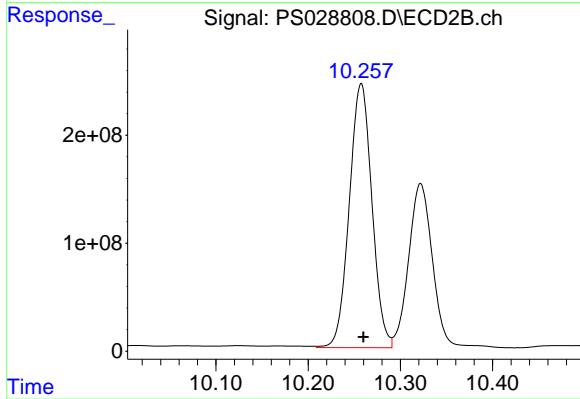
#11 2,4,5-TP (SILVEX)

R.T.: 9.840 min  
 Delta R.T.: -0.002 min  
 Response: 4453808943  
 Conc: 495.78 ng/ml



#12 2,4,5-T

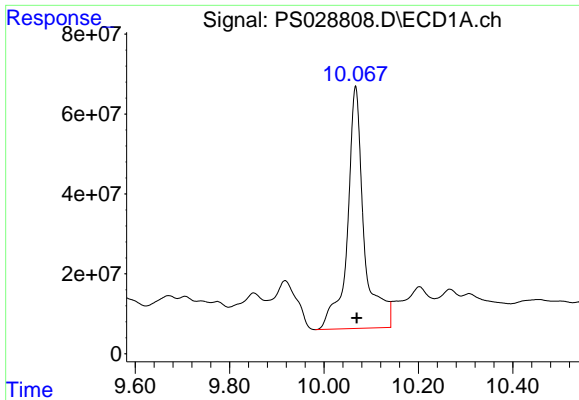
R.T.: 9.493 min  
 Delta R.T.: -0.005 min  
 Response: 8375710689  
 Conc: 514.82 ng/ml



#12 2,4,5-T

R.T.: 10.257 min  
 Delta R.T.: -0.002 min  
 Response: 4174168368  
 Conc: 479.28 ng/ml

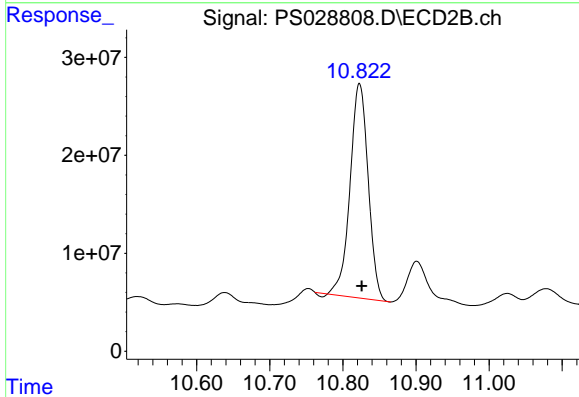




#13 2,4-DB

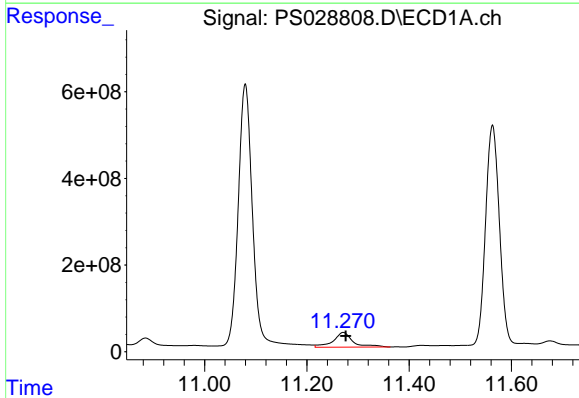
R.T.: 10.067 min  
 Delta R.T.: -0.002 min  
 Response: 1488856092  
 Conc: 476.95 ng/ml

Instrument :  
 ECD\_S  
 ClientSampleId :  
 OU4-VSL-14-121224MS



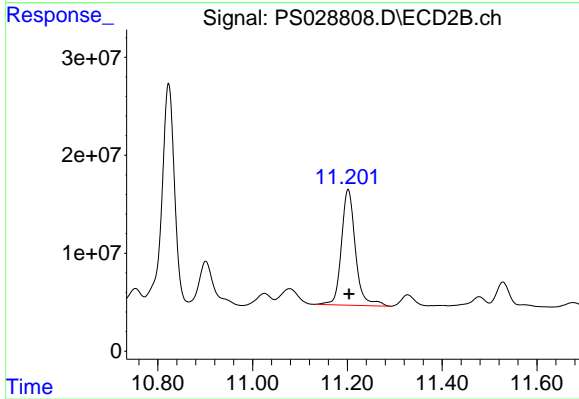
#13 2,4-DB

R.T.: 10.823 min  
 Delta R.T.: -0.003 min  
 Response: 376419163  
 Conc: 387.62 ng/ml



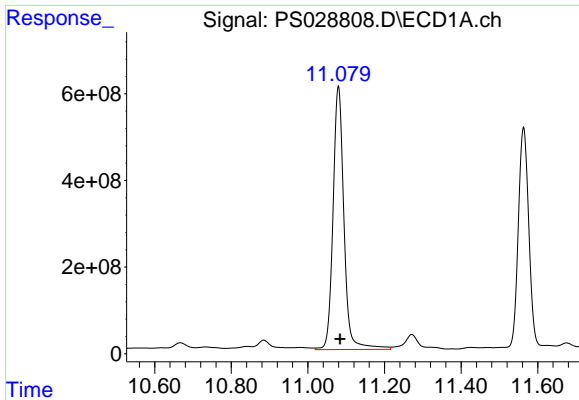
#14 DINOSEB

R.T.: 11.271 min  
 Delta R.T.: -0.005 min  
 Response: 916264671  
 Conc: 68.17 ng/ml



#14 DINOSEB

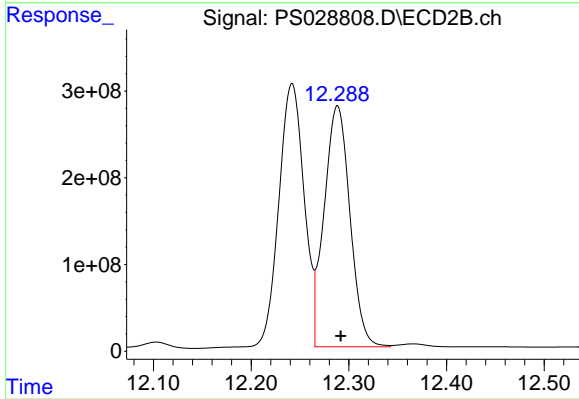
R.T.: 11.202 min  
 Delta R.T.: -0.002 min  
 Response: 241736854  
 Conc: 39.25 ng/ml



#15 Picloram

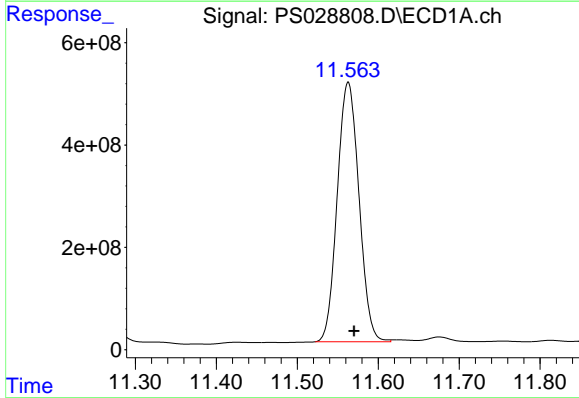
R.T.: 11.080 min  
 Delta R.T.: -0.005 min  
 Response: 12003222427  
 Conc: 447.67 ng/ml

Instrument :  
 ECD\_S  
 ClientSampleId :  
 OU4-VSL-14-121224MS



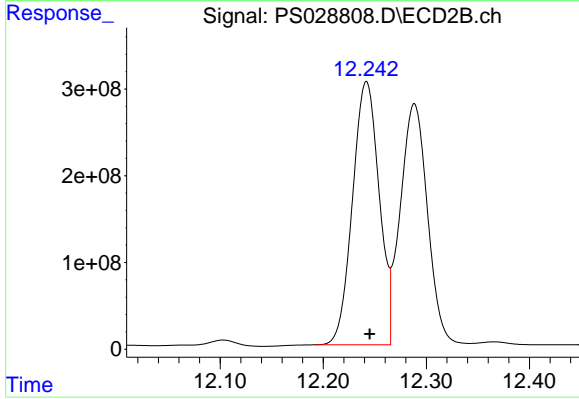
#15 Picloram

R.T.: 12.288 min  
 Delta R.T.: -0.003 min  
 Response: 5097127838  
 Conc: 397.00 ng/ml



#16 DCPA

R.T.: 11.563 min  
 Delta R.T.: -0.007 min  
 Response: 9463888204  
 Conc: 393.49 ng/ml



#16 DCPA

R.T.: 12.242 min  
 Delta R.T.: -0.003 min  
 Response: 5455213637  
 Conc: 507.72 ng/ml