

Data Path : Z:\pestpcbsrv\HPCHEM1\ECD\_S\Data\PS122523\  
 Data File : PS025213.D  
 Signal(s) : Signal #1: ECD1A.ch Signal #2: ECD2B.ch  
 Acq On : 26 Dec 2023 05:10  
 Operator : AR\AJ  
 Sample : 05909-13  
 Misc :  
 ALS Vial : 28 Sample Multiplier: 1

Instrument :  
 ECD\_S  
 ClientSampleId :  
 GHL-SD-51

Integration File signal 1: autoint1.e  
 Integration File signal 2: autoint2.e  
 Quant Time: Dec 26 06:52:22 2023  
 Quant Method : Z:\pestpcbsrv\HPCHEM1\ECD\_S\Method\PS112823.M  
 Quant Title : 8080.M  
 QLast Update : Tue Nov 28 16:40:06 2023  
 Response via : Initial Calibration  
 Integrator: ChemStation

Volume Inj. : 2 µl  
 Signal #1 Phase : Rtx-CLPesticides Signal #2 Phase: Rtx-CLPesticides2  
 Signal #1 Info : 30M x 0.32mm x0.5 Signal #2 Info : 30M x 0.32mm x 0.25µm

Compound	RT#1	RT#2	Resp#1	Resp#2	ng/ml	ng/ml
-----						
System Monitoring Compounds						
4) S 2,4-DCAA	6.352	6.765	678.0E6	199.3E6	302.990	275.004
Target Compounds						
1) T Dalapon	2.443	2.503	48488637	25397615	16.815	22.142 #
2) T 3,5-DICHL...	5.692	5.975	19845457	1606844	5.871	1.414 #
3) T 4-Nitroph...	6.170	6.425	28690062	4897389	19.482	10.055 #
5) T DICAMBA	0.000	6.963	0	11206206	N.D.	3.617
6) T MCPP	6.668	7.012	207.6E6	9048201	30.304	4.362 #
7) T MCPA	6.797	7.226	9497988	13029312	<MDL	3.961 #
8) T DICHLORPROP	7.067	7.546	33200180	77459528	12.942	98.467 #
9) T 2,4-D	7.282	7.849	23501980	30057947	7.738	30.859 #
10) T Pentachlo...	7.504	8.245	35914977	4790051	1.024	<MDL #
12) T 2,4,5-T	8.297	8.974	302.5E6	8045238	20.942	1.865 #
13) T 2,4-DB	8.802	9.479	658.3E6	211.6E6	283.353	382.327 #
14) T DINOSEB	9.859	9.788	13220860	291.8E6	1.218	95.174 #
15) T Picloram	9.697	10.780	2943.6E6	189.0E6	151.063	28.874 #
16) T DCPA	10.114	10.726	644.7E6	165666	34.359	<MDL #

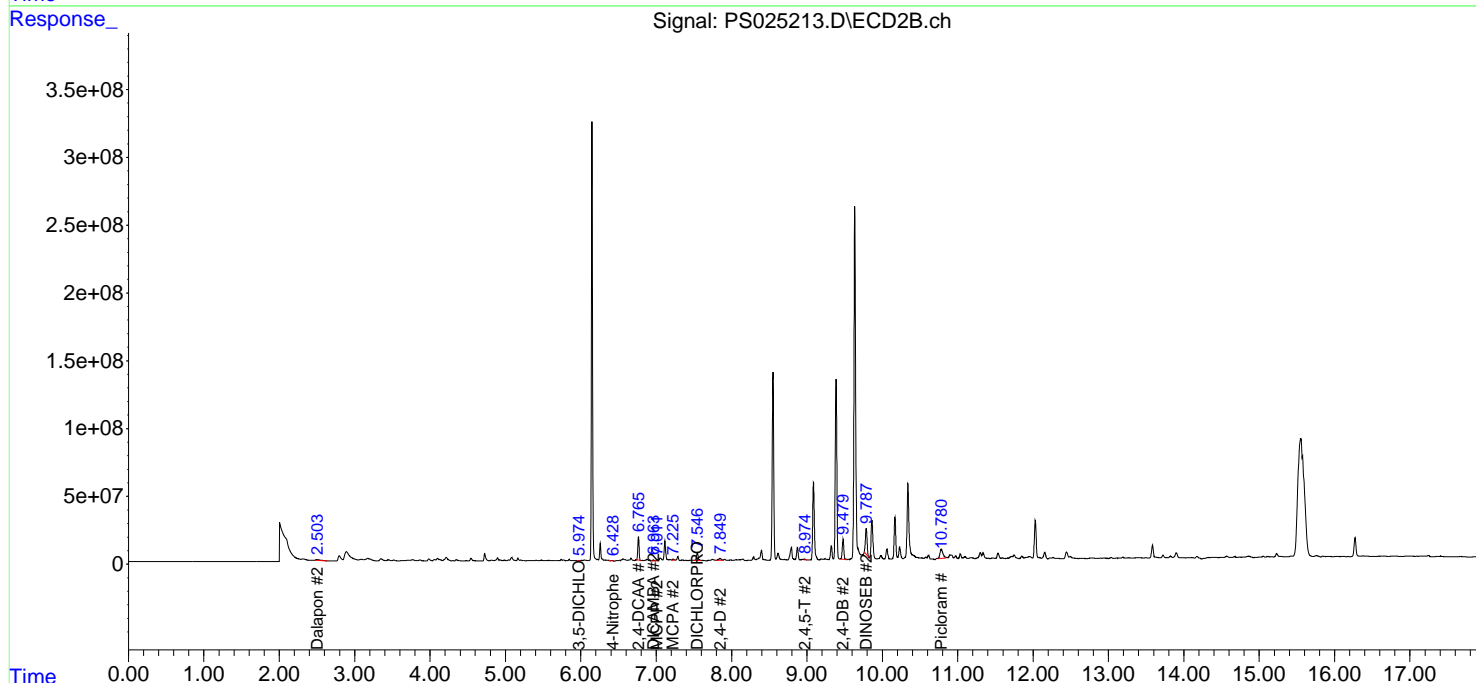
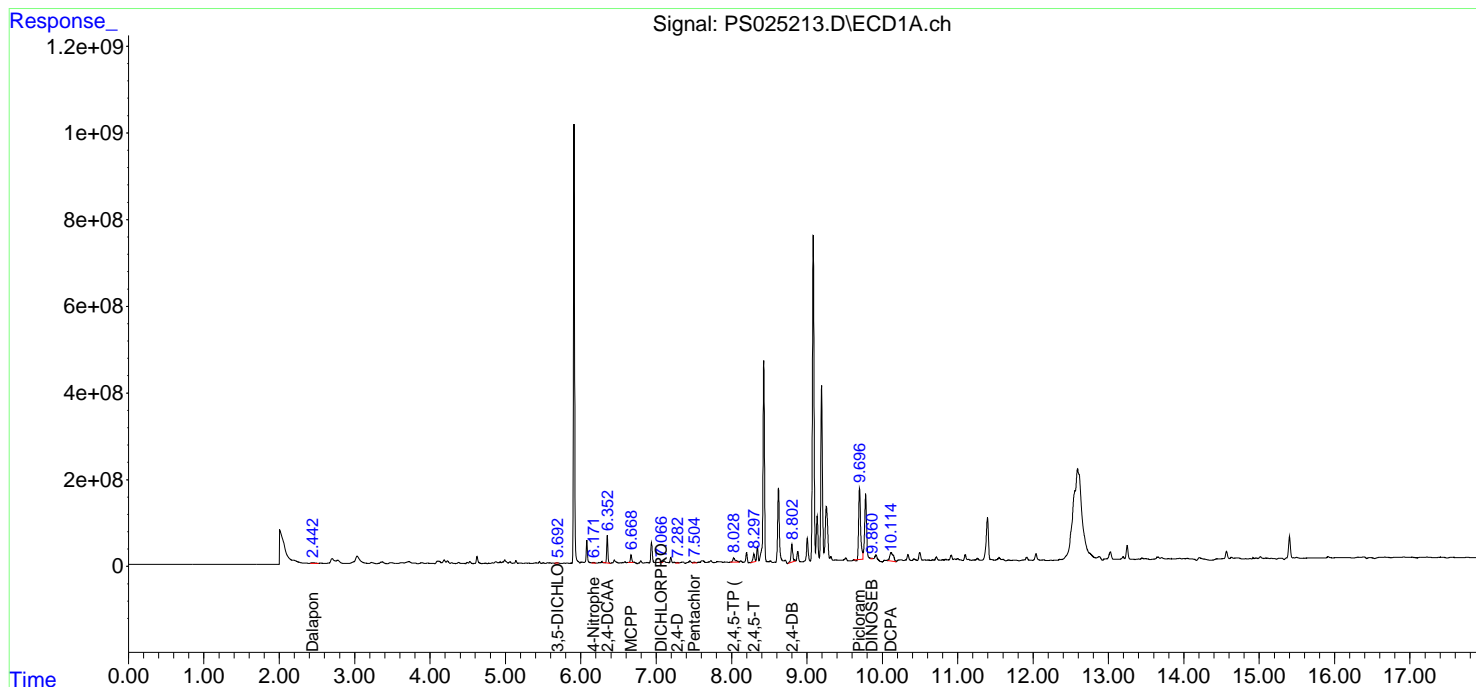
(f)=RT Delta > 1/2 Window (#)=Amounts differ by > 25% (m)=manual int.

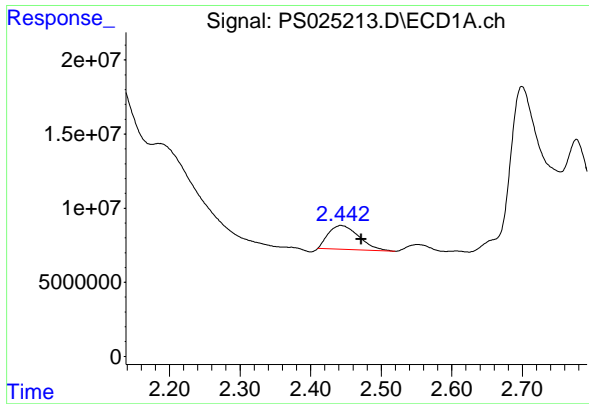
Data Path : Z:\pestpcbsrv\HPCHEM1\ECD\_S\Data\PS122523\  
 Data File : PS025213.D  
 Signal(s) : Signal #1: ECD1A.ch Signal #2: ECD2B.ch  
 Acq On : 26 Dec 2023 05:10  
 Operator : AR\AJ  
 Sample : 05909-13  
 Misc :  
 ALS Vial : 28 Sample Multiplier: 1

Instrument :  
 ECD\_S  
 ClientSampleId :  
 GHF-SD-51

Integration File signal 1: autoint1.e  
 Integration File signal 2: autoint2.e  
 Quant Time: Dec 26 06:52:22 2023  
 Quant Method : Z:\pestpcbsrv\HPCHEM1\ECD\_S\Method\PS112823.M  
 Quant Title : 8080.M  
 QLast Update : Tue Nov 28 16:40:06 2023  
 Response via : Initial Calibration  
 Integrator: ChemStation

Volume Inj. : 2 µl  
 Signal #1 Phase : Rtx-CLPesticides Signal #2 Phase: Rtx-CLPesticides2  
 Signal #1 Info : 30M x 0.32mm x 0.5 Signal #2 Info : 30M x 0.32mm x 0.25µm

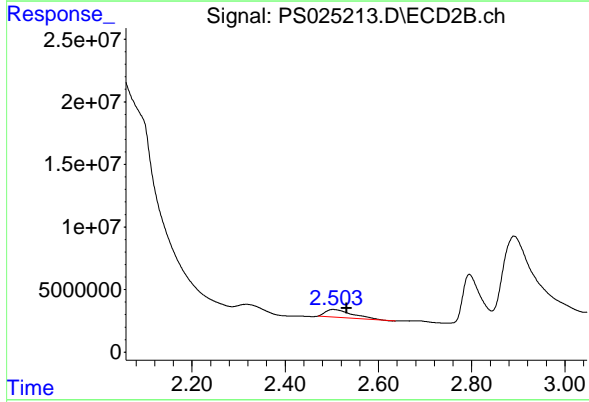




#1 Dalapon

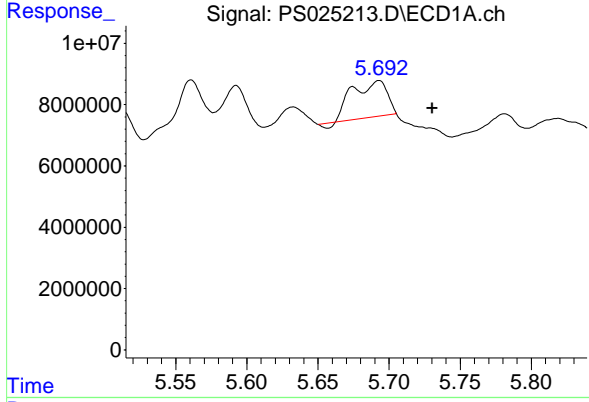
R.T.: 2.443 min  
 Delta R.T.: -0.029 min  
 Response: 48488637  
 Conc: 16.81 ng/ml

Instrument : ECD\_S  
 ClientSampleId : GHJ-SD-51



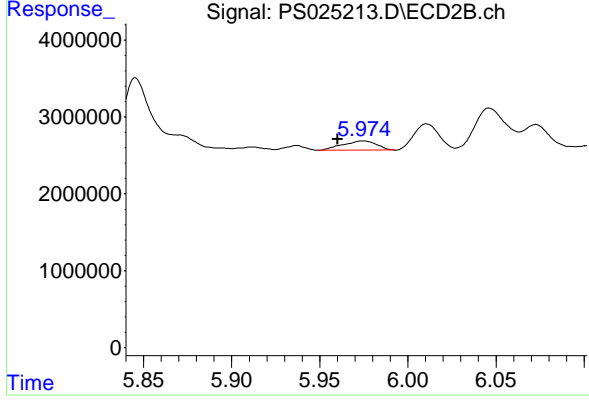
#1 Dalapon

R.T.: 2.503 min  
 Delta R.T.: -0.028 min  
 Response: 25397615  
 Conc: 22.14 ng/ml



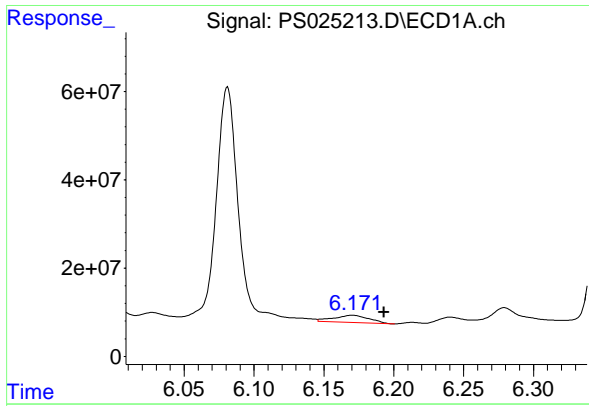
#2 3,5-DICHLOROBENZOIC ACID

R.T.: 5.692 min  
 Delta R.T.: -0.038 min  
 Response: 19845457  
 Conc: 5.87 ng/ml



#2 3,5-DICHLOROBENZOIC ACID

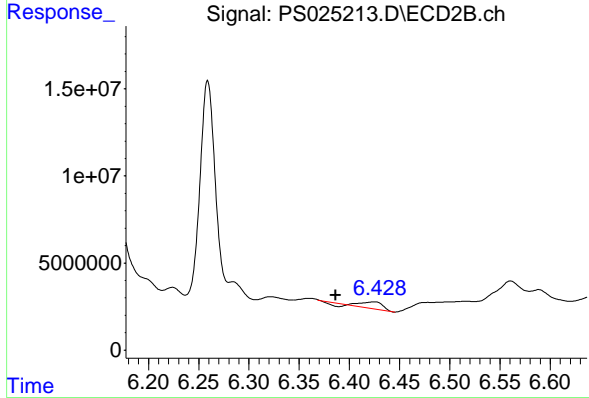
R.T.: 5.975 min  
 Delta R.T.: 0.014 min  
 Response: 1606844  
 Conc: 1.41 ng/ml



#3 4-Nitrophenol

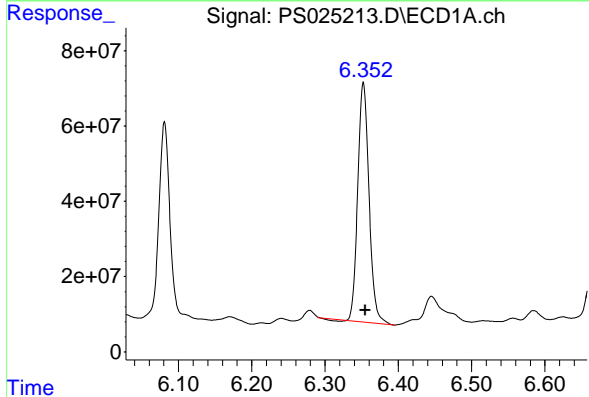
R.T.: 6.170 min  
 Delta R.T.: -0.023 min  
 Response: 28690062  
 Conc: 19.48 ng/ml

Instrument : ECD\_S  
 ClientSampleId : GHJ-SD-51



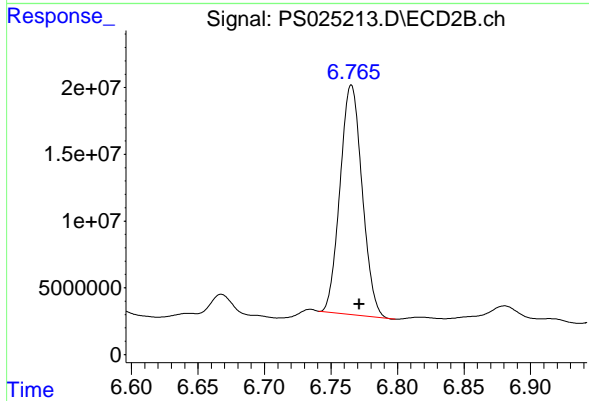
#3 4-Nitrophenol

R.T.: 6.425 min  
 Delta R.T.: 0.039 min  
 Response: 4897389  
 Conc: 10.06 ng/ml



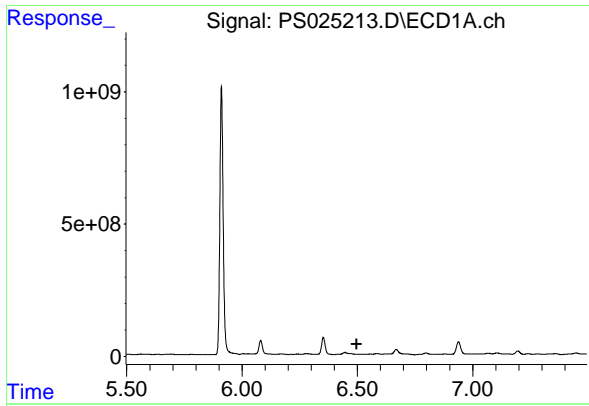
#4 2,4-DCAA

R.T.: 6.352 min  
 Delta R.T.: -0.003 min  
 Response: 678044580  
 Conc: 302.99 ng/ml



#4 2,4-DCAA

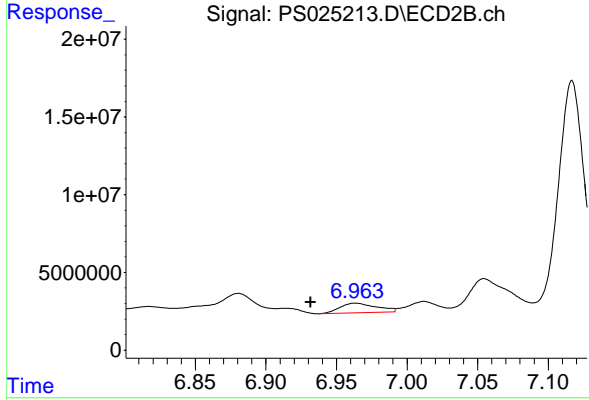
R.T.: 6.765 min  
 Delta R.T.: -0.006 min  
 Response: 199255187  
 Conc: 275.00 ng/ml



#5 DICAMBA

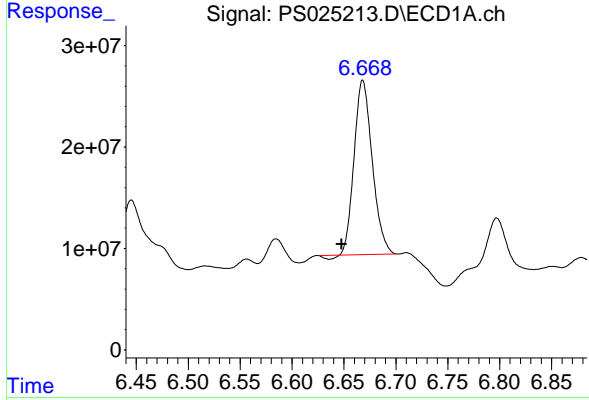
R.T.: 0.000 min  
 Exp R.T.: 6.496 min  
 Response: 0  
 Conc: N.D.

Instrument :  
 ECD\_S  
 ClientSampleId :  
 GHL-SD-51



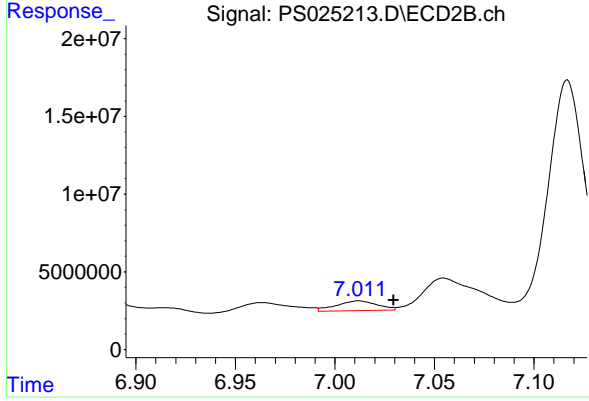
#5 DICAMBA

R.T.: 6.963 min  
 Delta R.T.: 0.032 min  
 Response: 11206206  
 Conc: 3.62 ng/ml



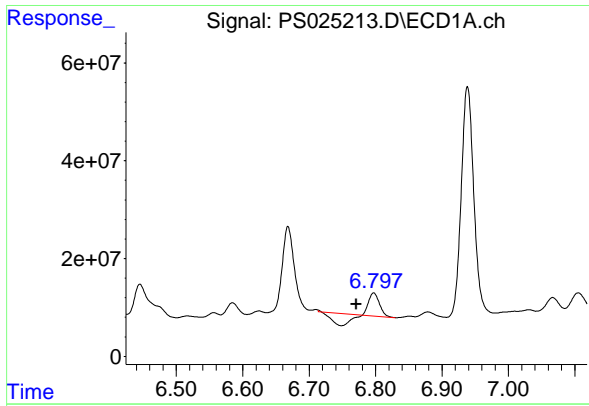
#6 MCPP

R.T.: 6.668 min  
 Delta R.T.: 0.020 min  
 Response: 207555922  
 Conc: 30.30 ug/ml



#6 MCPP

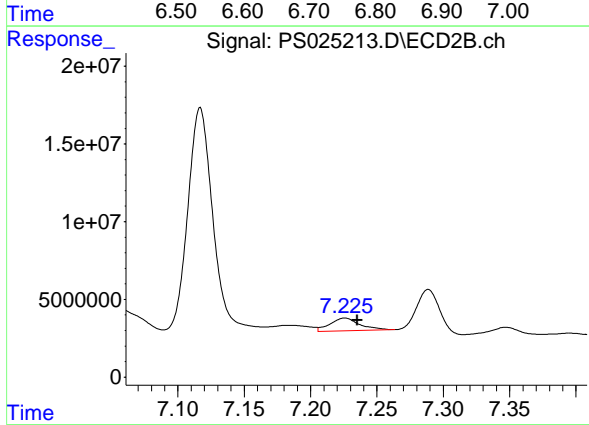
R.T.: 7.012 min  
 Delta R.T.: -0.018 min  
 Response: 9048201  
 Conc: 4.36 ug/ml



#7 MCPA

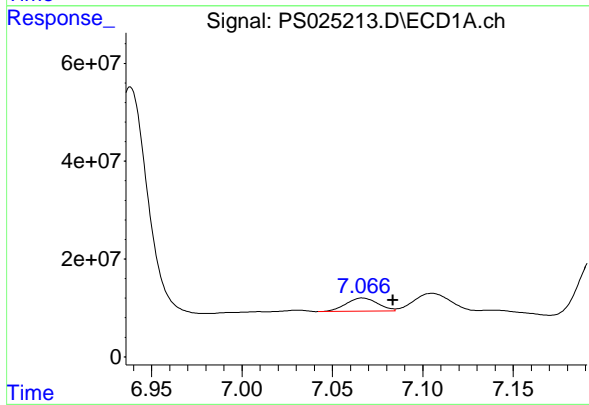
R.T.: 6.797 min  
 Delta R.T.: 0.027 min  
 Response: 9497988  
 Conc: N.D.

Instrument :  
 ECD\_S  
 ClientSampleId :  
 GHL-SD-51



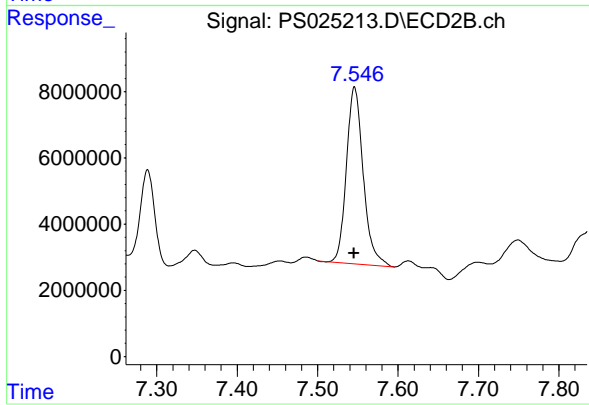
#7 MCPA

R.T.: 7.226 min  
 Delta R.T.: -0.010 min  
 Response: 13029312  
 Conc: 3.96 ug/ml



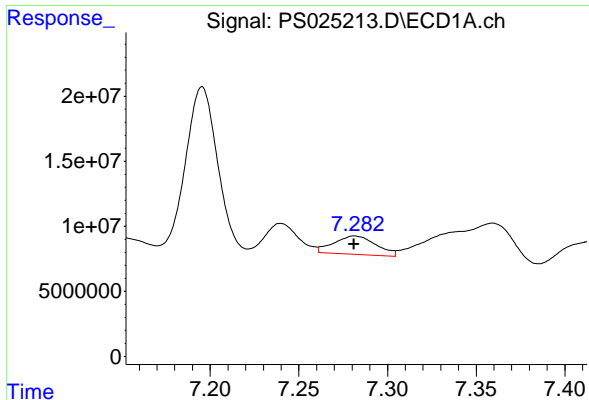
#8 DICHLORPROP

R.T.: 7.067 min  
 Delta R.T.: -0.017 min  
 Response: 33200180  
 Conc: 12.94 ng/ml



#8 DICHLORPROP

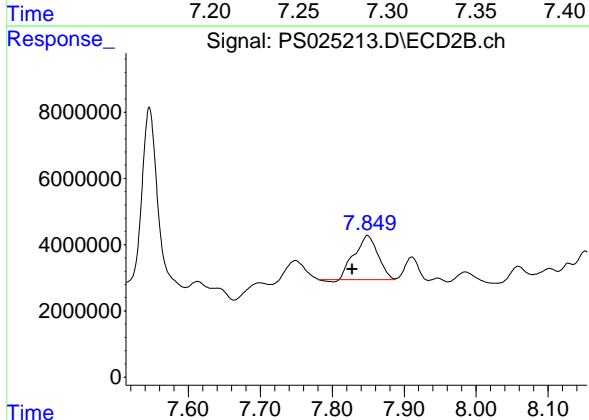
R.T.: 7.546 min  
 Delta R.T.: 0.000 min  
 Response: 77459528  
 Conc: 98.47 ng/ml



#9 2,4-D

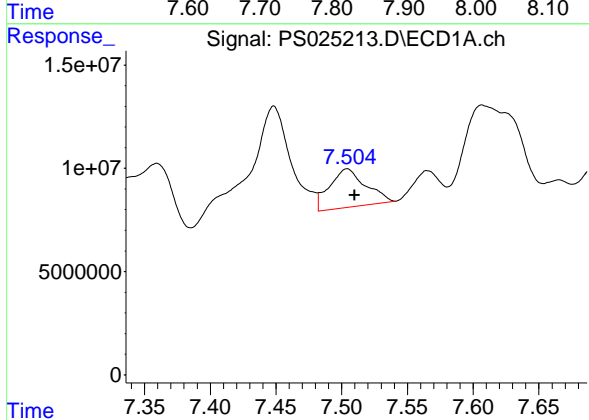
R.T.: 7.282 min  
 Delta R.T.: 0.000 min  
 Response: 23501980  
 Conc: 7.74 ng/ml

Instrument :  
 ECD\_S  
 ClientSampleId :  
 GHL-SD-51



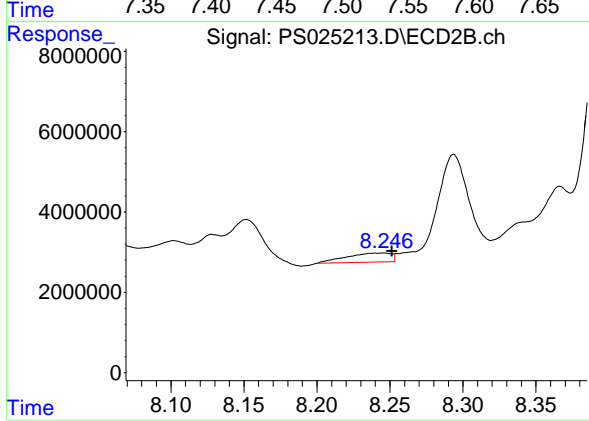
#9 2,4-D

R.T.: 7.849 min  
 Delta R.T.: 0.021 min  
 Response: 30057947  
 Conc: 30.86 ng/ml



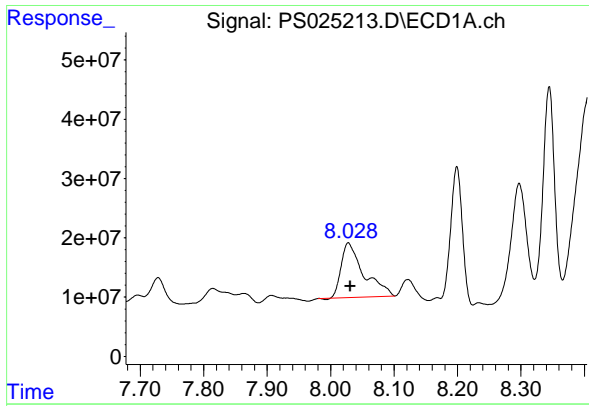
#10 Pentachlorophenol

R.T.: 7.504 min  
 Delta R.T.: -0.006 min  
 Response: 35914977  
 Conc: 1.02 ng/ml



#10 Pentachlorophenol

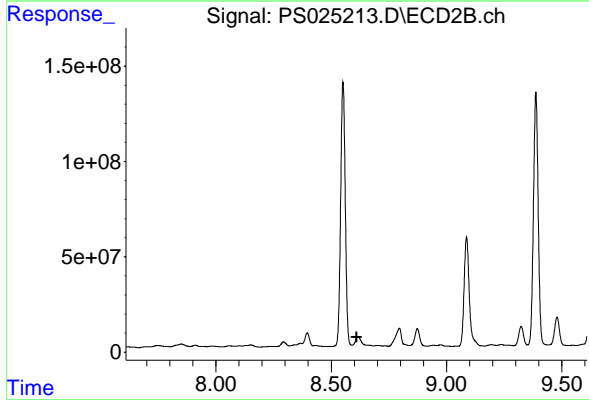
R.T.: 8.245 min  
 Delta R.T.: -0.006 min  
 Response: 4790051  
 Conc: N.D.



#11 2,4,5-TP (SILVEX)

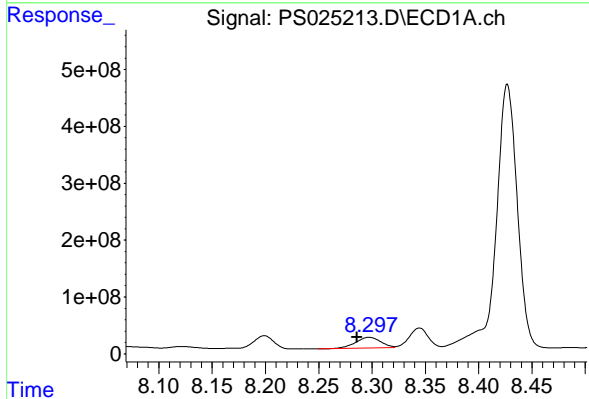
R.T.: 8.028 min  
 Delta R.T.: -0.003 min  
 Response: 226271512  
 Conc: 14.89 ng/ml

Instrument :  
 ECD\_S  
 ClientSampleId :  
 GHL-SD-51



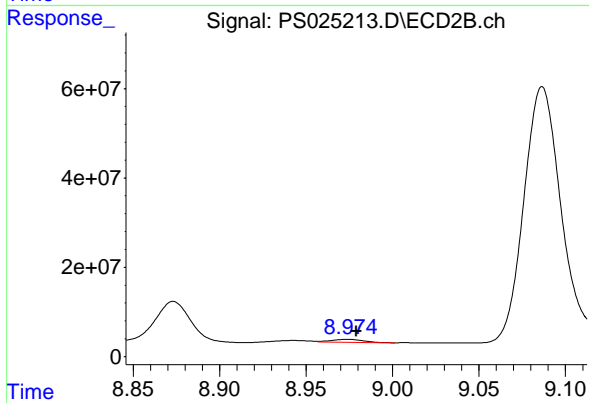
#11 2,4,5-TP (SILVEX)

R.T.: 8.616 min  
 Delta R.T.: 0.006 min  
 Response: -240170501  
 Conc: N.D.



#12 2,4,5-T

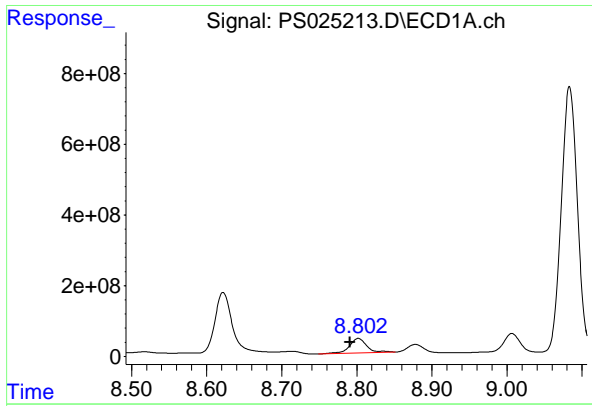
R.T.: 8.297 min  
 Delta R.T.: 0.011 min  
 Response: 302498836  
 Conc: 20.94 ng/ml



#12 2,4,5-T

R.T.: 8.974 min  
 Delta R.T.: -0.005 min  
 Response: 8045238  
 Conc: 1.86 ng/ml

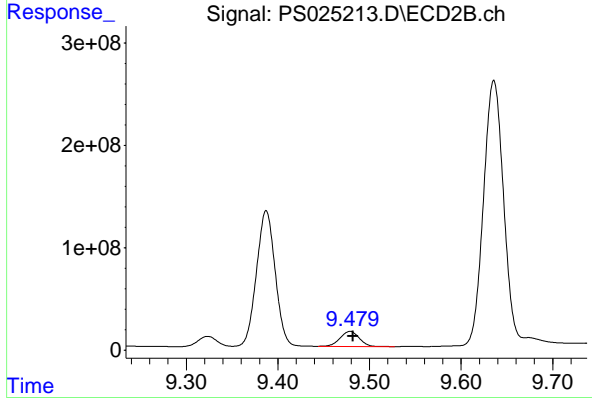




#13 2,4-DB

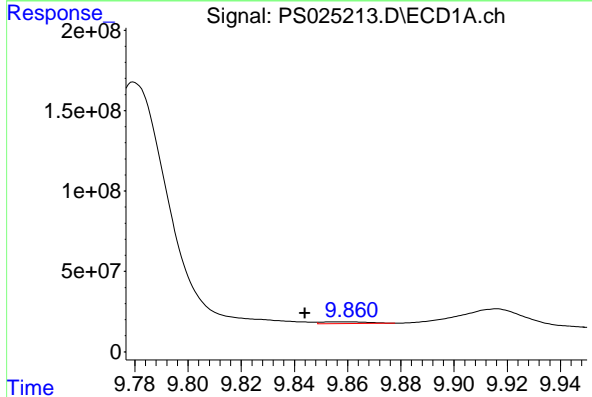
R.T.: 8.802 min  
 Delta R.T.: 0.011 min  
 Response: 658313329  
 Conc: 283.35 ng/ml

Instrument :  
 ECD\_S  
 ClientSampleId :  
 GHL-SD-51



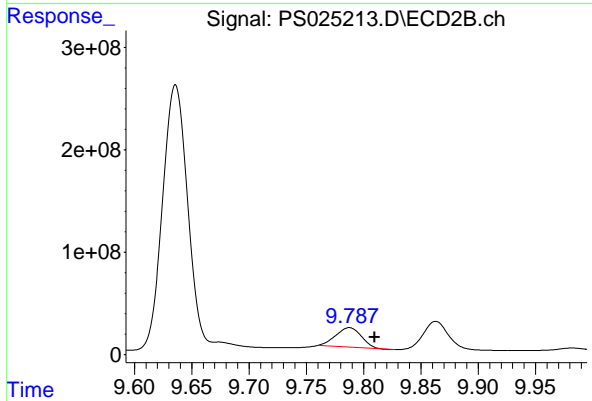
#13 2,4-DB

R.T.: 9.479 min  
 Delta R.T.: -0.003 min  
 Response: 211605470  
 Conc: 382.33 ng/ml



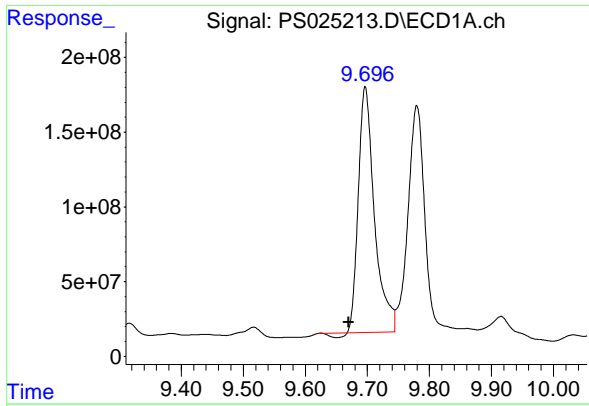
#14 DINOSEB

R.T.: 9.859 min  
 Delta R.T.: 0.015 min  
 Response: 13220860  
 Conc: 1.22 ng/ml



#14 DINOSEB

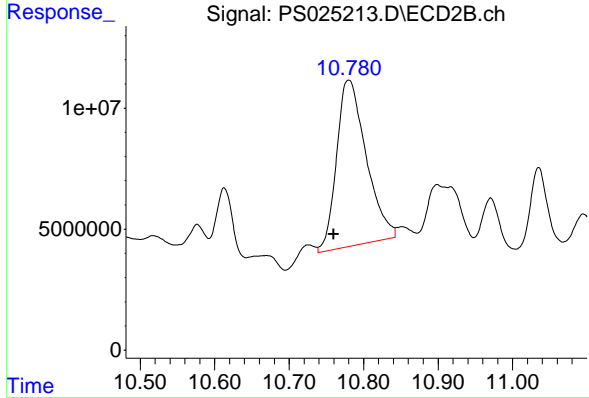
R.T.: 9.788 min  
 Delta R.T.: -0.022 min  
 Response: 291796474  
 Conc: 95.17 ng/ml



#15 Picloram

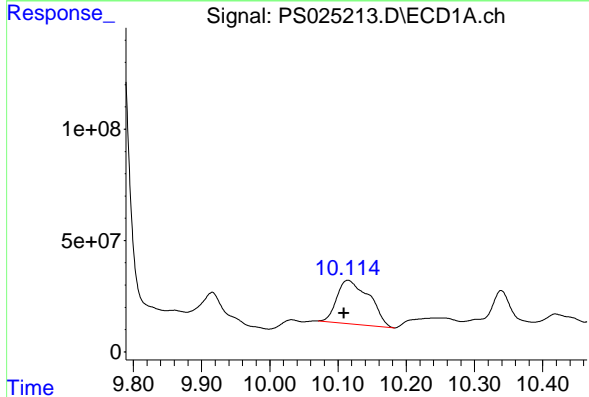
R.T.: 9.697 min  
 Delta R.T.: 0.027 min  
 Response: 2943592425  
 Conc: 151.06 ng/ml

Instrument :  
 ECD\_S  
 ClientSampleId :  
 GHL-SD-51



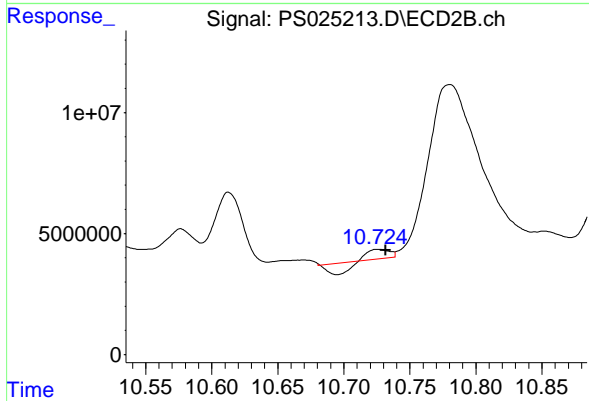
#15 Picloram

R.T.: 10.780 min  
 Delta R.T.: 0.020 min  
 Response: 188987111  
 Conc: 28.87 ng/ml



#16 DCPA

R.T.: 10.114 min  
 Delta R.T.: 0.005 min  
 Response: 644677562  
 Conc: 34.36 ng/ml



#16 DCPA

R.T.: 10.726 min  
 Delta R.T.: -0.006 min  
 Response: 165666  
 Conc: N.D.